



DE VALK
YACHT BROKERS



LUXE MOTOR 1500



DE VALK
YACHT BROKERS

BROKERAGE | CHARTER | BERTHS | FINANCE | INSURANCE | YACHT MANAGEMENT

LUXE MOTOR 1500

BROKER'S COMMENTS

Charmingly built 'Live-onboard' Luxe Motor 1500 called 'Nieuvevaart'. This Luxe Motor 1500 was built and designed by the previous owner in 2007. The 'Nieuvevaart' is a very practical and comfortable motor yacht which makes it a pleasure to stay longer on board. The Luxe Motor 1500 is powered by a reliable Daf 615 diesel engine, there is also a strong Vetus bow thruster which makes manoeuvring smooth.

Jochem Heijermans

SPECIFICATIONS

Dimensions	15.00 x 4.50 x 1.00 (m)	Builder	Self Construction
Built	2007	Cabins	2
Material	Steel	Berths	4
Engine(s)	1 x Daf 615 diesel	Hp/Kw	150.00 (hp), 110.00 (kw)
Asking price	sold (VAT)	Lying	elsewhere / Not at sales office

CONTACT

Sales office	De Valk Belgium	Telephone	+32 586 80 218
Address	1401 PT Nieuwpoort BE	E-mail	belgium@devalk.nl

DISCLAIMER

These particulars are given in good faith as supplied but cannot be guaranteed.



LUXE MOTOR 1500

GENERAL

Model	LUXE MOTOR 1500
Type	motor yacht
LOA (m)	15,00
Beam (m)	4,50
Draft (m)	1,00
Headroom (m)	2,00
Year built	2007
Builder	Self Construction
Country	The Netherlands
Displacement (t)	33
CE norm	NA
Hull material	steel
Hull colour	black Superstructure off white
Hull shape	flat bottom
Superstructure material	steel
Rubbing strake	steel
Deck material	steel
Deck finish	non-skid paint
Superstructure deck finish	paint
Cockpit deck finish	non-skid paint
Antifouling (year)	Epifanes (2018)
Dorades	yes
Window frame	wood
Window material	double glazing
Deckhatch	3x Gebo
Portholes	steel
Insulation	foam plates
Mast can be lowered	manual
Fuel tank (litre)	steel 1000
Fuel tank 2 (litre)	steel 1000



Level indicator (fuel tank)	Gauge glass
Freshwater tank (litre)	steel 2000
Blackwater tank (litre)	steel 200
Blackwater tank extraction	deck extraction + pump
Wheel steering	hydraulic
More info on paintwork	Decks repainting 2020

ACCOMMODATION

Cabins	2
Berths	4
Interior	oak
Floor	wood Solid
Saloon	yes
Headroom saloon (m)	2
Heating	stove diesel Heatpol
Heating 2	electric 220V
Dinette	yes
Opening door to aft deck	yes
Galley	yes
Countertop	plastic
Sink	stainless steel
Cooker	calor gas 4 burner
Oven	Riviera
Extractor	yes
Gas alarm	yes
Microwave/oven combi	SilverCrest
Fridge	Electrolux
Freezer	Electrolux
Hot water system	geyser on Calor Gas Vaillant
Water pressure system	electrical
Coffee maker	yes



LUXE MOTOR 1 500

Owners cabin	double bed
Bed length (m)	1.95 x 1.60
Wardrobe	hanging/drawers/shelves
Bathroom	shared
Toilet	shared
Toilet system	electric
Wash basin	in the bathroom
Shower	shared
Guest cabin 1	double bed
Bed length (m)	1.95 x 1.40
Wardrobe	hanging
Washing machine	Prepared

MACHINERY

No of engines	1
Make	Daf
Type	615
HP	150
kW	110,00
Fuel	diesel
Year installed	2007
Maximum speed (kn)	8
Cruising speed (kn)	6
Consumption (l/hr)	5
Engine hours	890
Engine cooling system	freshwater heat exchanger
Drive	shaft
Engine controls	bowden cable
Gearbox	hydraulic
Bowthruster	electric Vetus 160kgf
Exhaust	watercooled



LUXE MOTOR 1500

Thrust bearing	yes
Propeller type	fixed
Propeller blades	4
Propeller shaft material	stainless steel
Shaft lubrication	grease
Electric bilge pump	yes
Electrical installation	24V/220V
Generator	dry exhaust (portable) Honda EU10i 2KW
Batteries	6
Start battery	24V/450Ah (2015)
Service battery	24V/900Ah
Battery monitor	yes
Battery charger	CTEK multi XT14000, Micro-Tech 24V/30Ah
Inverter	Victron 24V/3000W
Solar panel	FOX-150
Insulation transformer	Weseman B.V.
Extra info	Silver elephant compressor jet 60L in engineroom

NAVIGATION

VHF	Navman
Rudder angle indicator	yes
Navigation lights	yes

EQUIPMENT

Fixed windscreen	yes
Cockpit cushions	yes
Cockpit table	yes
Cockpit chairs	yes
Boarding ladder	stainless steel
Anchor	
Anchor chain	25m



LUXE MOTOR 1500

Anchor 2	Scissor anchor
Windlass	manual
Capstan	yes
Deck wash	yes
Deck crane	manual
Pushpit	yes
Pulpit	yes
Lifejackets	yes
Lifebuoy	yes
Wiper	Prepared
Horn	air pressure (defect)
Fenders	(2020) + driftwood (2020)
Mooring lines	(2015)
Spare parts	yes
Alarm system	yes
TV	Hitachi Smart tv (2018)
TV receiver	Installed in tv
Clock - barometer	yes
Fire extinguisher	3x
Latest extinguisher survey	(2020)
Extinguisher in engine room	yes



LUXE MOTOR 1500



LUXE MOTOR 1 500



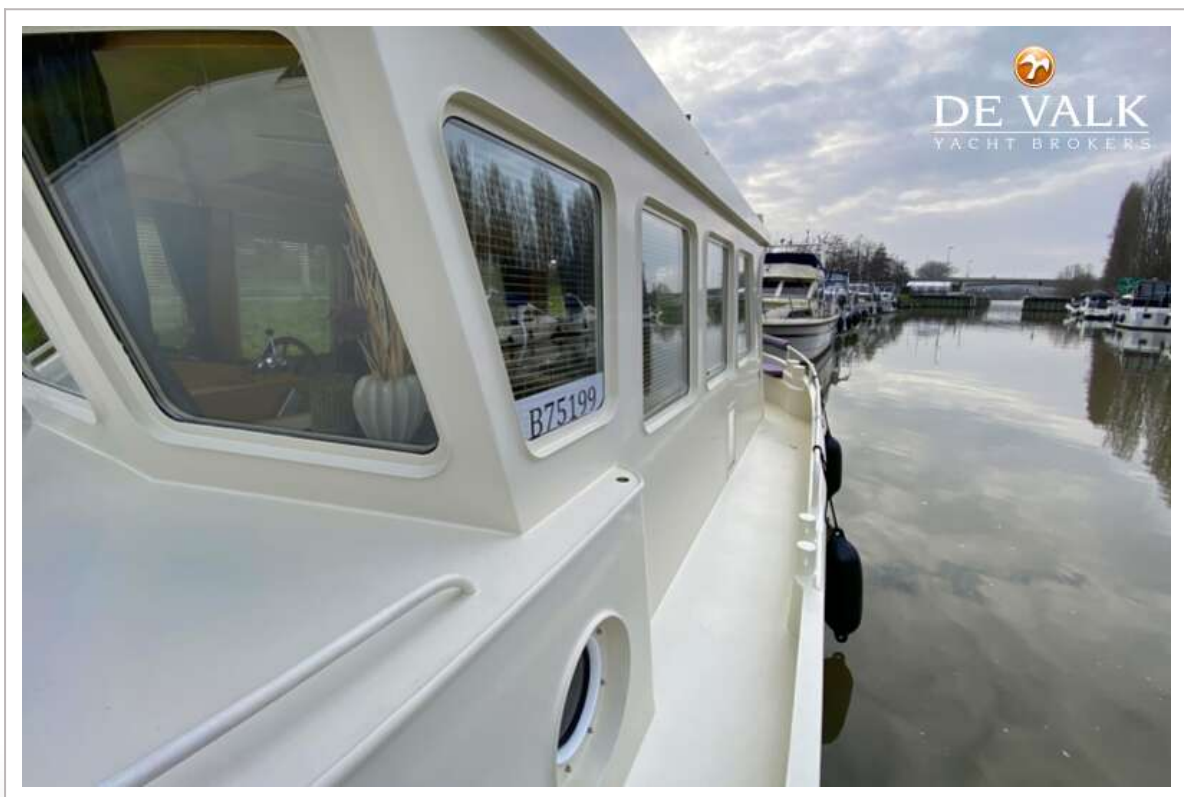
LUXE MOTOR 1500



LUXE MOTOR 1500



LUXE MOTOR 1500



LUXE MOTOR 1500



LUXE MOTOR 1500



LUXE MOTOR 1500



LUXE MOTOR 1500



LUXE MOTOR 1500



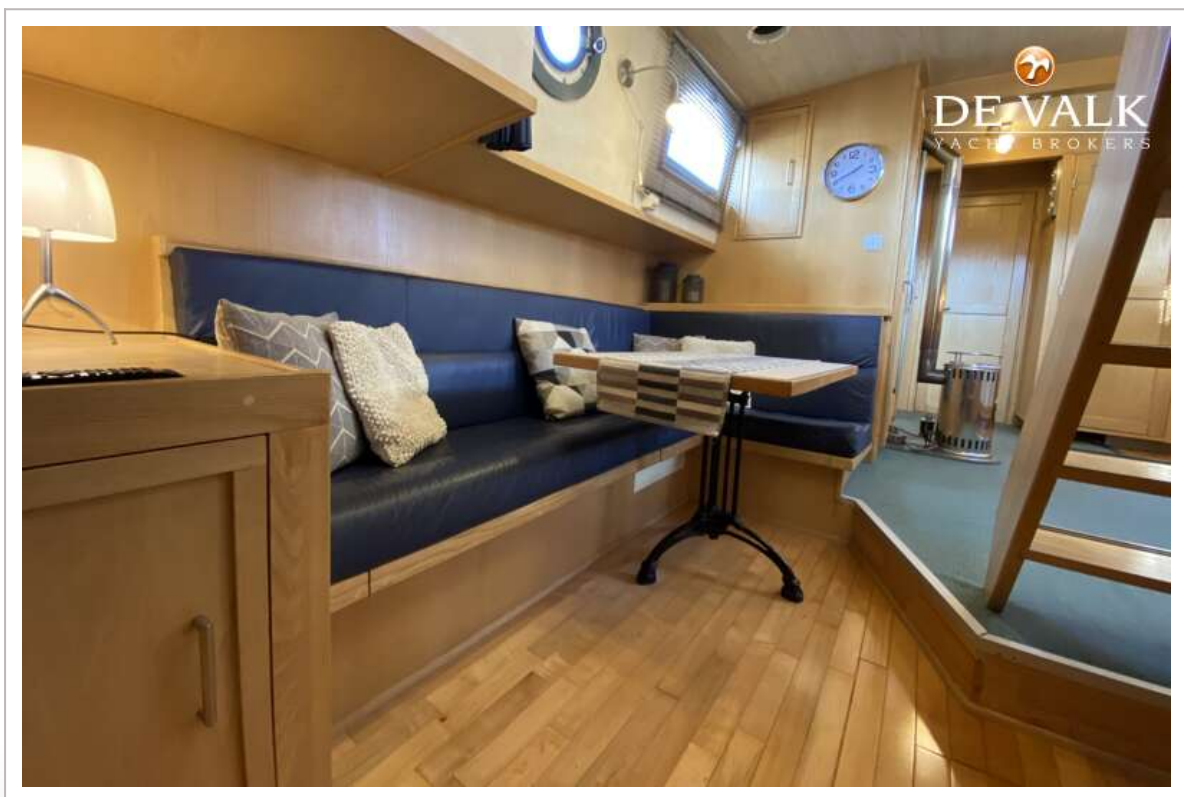
LUXE MOTOR 1500



LUXE MOTOR 1500



LUXE MOTOR 1500



LUXE MOTOR 1500





LUXE MOTOR 1500



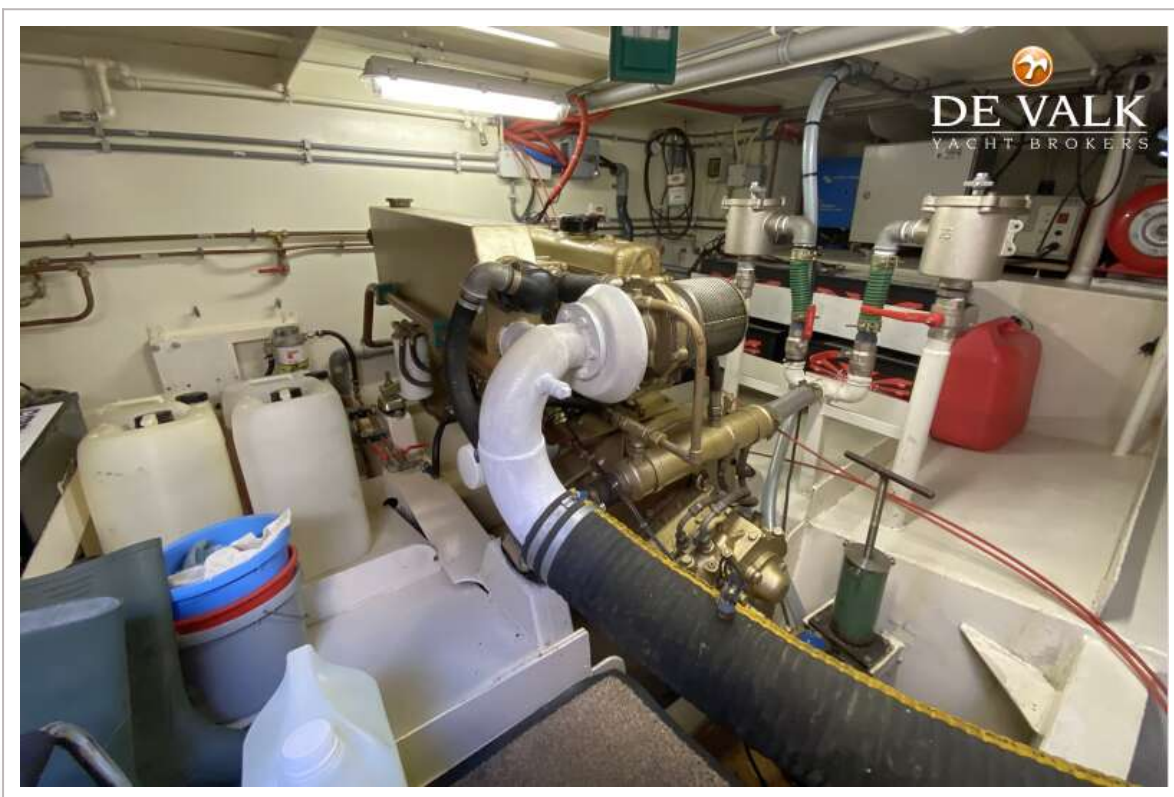
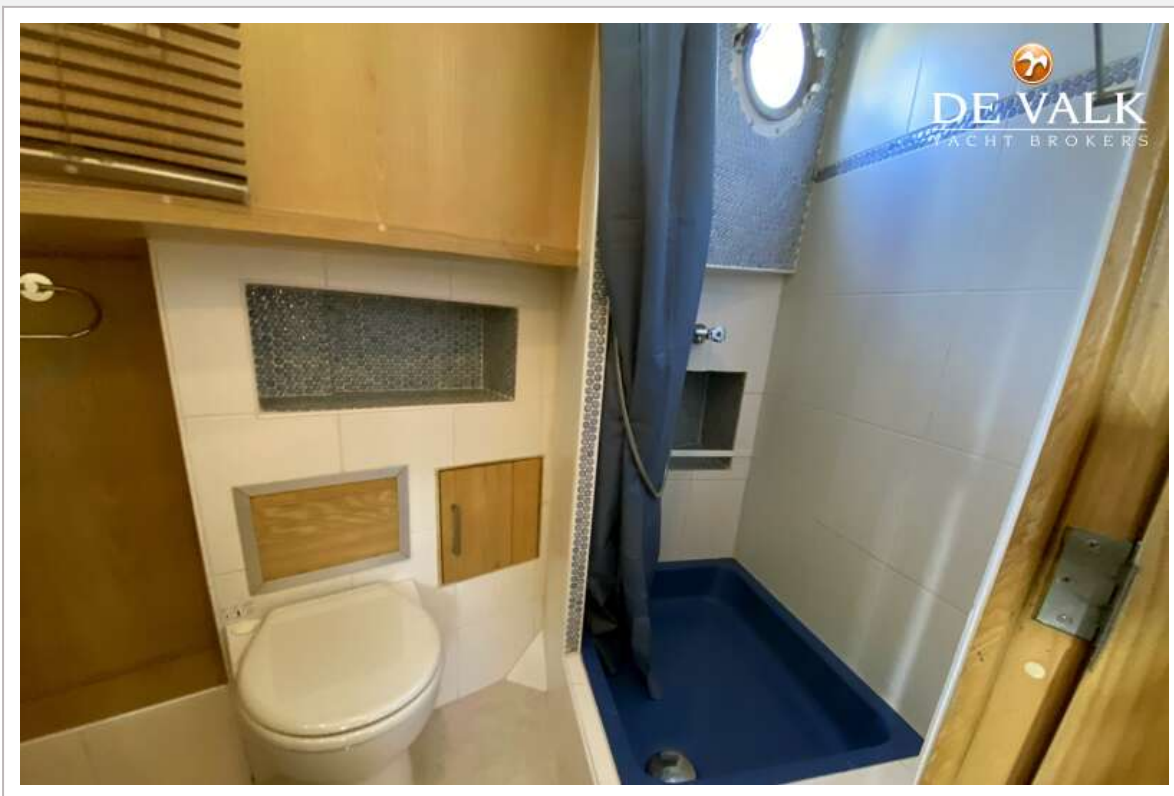
LUXE MOTOR 1 500



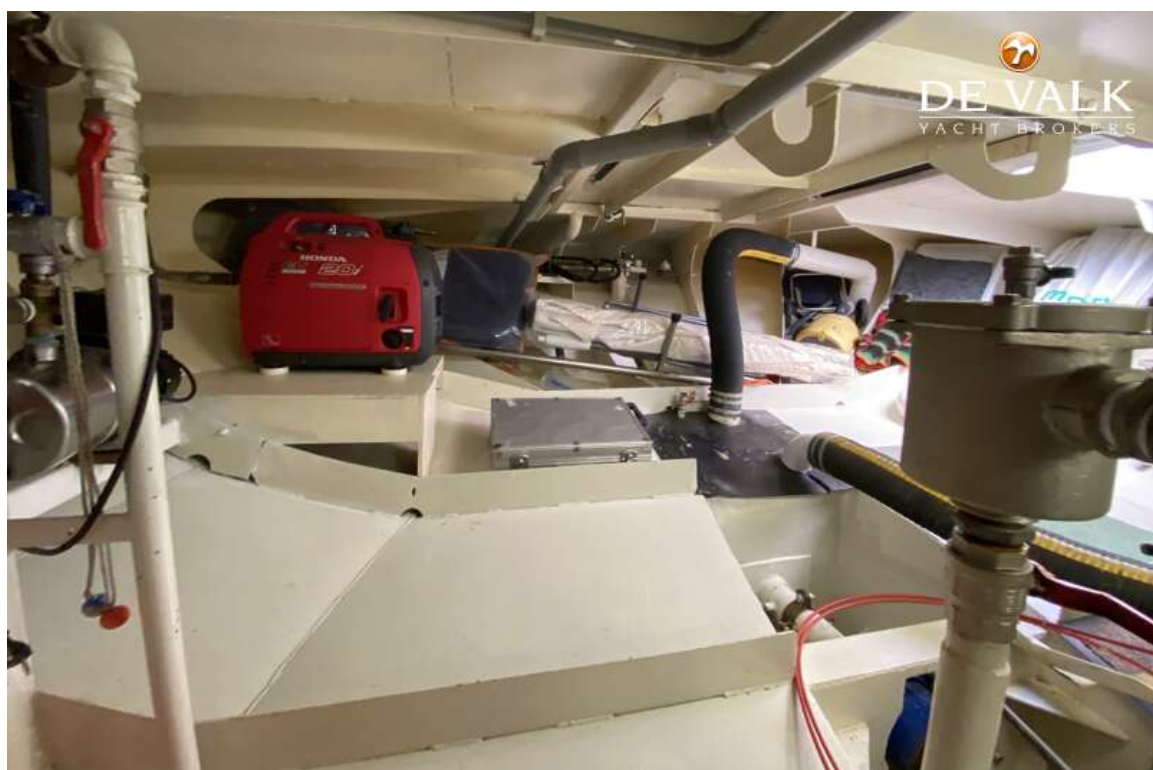
LUXE MOTOR 1500



LUXE MOTOR 1500



LUXE MOTOR 1500



LUXE MOTOR 1500

