



DE VALK
YACHT BROKERS



NOORDKAPER 40



DE VALK
YACHT BROKERS

BROKER'S COMMENTS

A true go-anywhere versatile allweather cruiser, meticulously maintained and upgraded from 2014 up to now. Some highlights; nearly new 100 HP engine and powerful 125 Kgf bow thruster, high-end communication equipment and comprehensive navigation sources + wind vane steering. The Pilothouse with 2nd helm position offers shelter and comfort in all conditions. The deep and spacious cockpit provides security and space to relax. This Noorkaper 40 is easy to sail short handed with its electric winches and lines led to the aft. Currently located in Sweden and visit by appointment possible.

Harald Padberg

SPECIFICATIONS

Dimensions	13.05 x 4.00 x 1.90 (m)	Builder	Visscher Zwartsluis
Built	2005	Cabins	2
Material	Steel	Berths	5
Engine(s)	1 x VW 2,5 TDI 5 cil. diesel	Hp/Kw	100.00 (hp), 73.50 (kw)
Asking price	sold (VAT)	Lying	elsewhere / Not at sales office

CONTACT

Sales office	De Valk Monnickendam B.V.	Telephone	+31 (0)299 65 63 50
Address	Hoogedijk 6 1145 PM Katwoude NL	E-mail	monnickendam@devalk.nl

DISCLAIMER

These particulars are given in good faith as supplied but cannot be guaranteed.



GENERAL

Model	NOORDKAPER 40
Type	sailing yacht
LOA (m)	13,05
LWL (m)	11,99
Beam (m)	4,00
Draft (m)	1,90
Air draft (m)	18,50
Headroom (m)	1,95
Year built	2005
Builder	Visscher Zwartsluis
Country	The Netherlands
Designer	Martin Bekebrede
Displacement (t)	19,5
Ballast (tonnes)	4
CE norm	A
Hull material	steel
Hull colour	Honey yellow + black
Hull shape	multi hard chine
Keel type	long keel
Superstructure material	steel
Deck material	steel
Deck finish	non-skid paint
Cockpit deck finish	teak
Antifouling (year)	new before launching in April 2021
Window frame	aluminium
Window material	double glazing
Deckhatch	4 X
Insulation	rockwool
Radar arch	non collapsible
Fuel tank (litre)	steel 360 L.



Fuel daytank (litre)	polyethylene 80 L.
Freshwater tank (litre)	stainless steel 750 L.
Greywater tank (litre)	2 X 50 L.
Wheel steering	hydraulic
Inside helm position	yes
Outside helm position	yes
Emergency tiller	yes
More info on paintwork	2016: hull & deck repainted with abrasion-resistant two-pack polyurethane paint system.
Extra info	2017: De-installation and cleaning of all water tanks + maintenance and painting of the stern, engine and main bilges.

ACCOMMODATION

Cabins	2
Berths	5
Interior	teak
Headroom saloon (m)	2.00 M.
Heating	diesel ducted hot air Webasto
Heating 2	stove diesel Refleks (2018)
Navigation center	yes
Chart table	yes
Dining room	table
Opening door to cockpit	+ protection cover for sliding hatch
Countertop	Resopal
Sink	stainless steel
Cooker	calor gas Force 10
Oven	+ surface grill
Gas alarm	+ Carbon Monoxide alarm
Fridge	Isotherm
Freezer	Extra fridge in drawer
Hot water system	2015 Vetus Boiler 31ltr, 1000 W
Water pressure system	electrical



Owners cabin	French bed
Bed length (m)	2,10
Wardrobe	hanging and drawers
Bathroom	shared
Toilet	shared
Toilet system	manual
Wash basin	in the bathroom
Shower	separate
Extra info	2016 new high standard latex 3 layer mattress
Guest cabin 1	double bed
Bed length (m)	2,10
Wardrobe	hanging and drawers
Extra info	2014 new high standard latex mattresses
Guest cabin 2	single bed
Bed length (m)	2,00
Washing machine	Candy Aquamatic 10T
Extra info	Fully equipped kitchen with built in coffee machine, electric kettle, etc.
Extra info	Electric fan in salon + air ventilation sail for front cabin

MACHINERY

No of engines	1
Make	VW
Type	2,5 TDI 5 cil.
HP	100
kW	73,50
Fuel	diesel
Year installed	2019
Maximum speed (kn)	7,7
Cruising speed (kn)	6,5
Consumption (l/hr)	7



Engine hours	134
Engine cooling system	freshwater heat exchanger
Drive	shaft
Engine controls	mechanical
Gearbox	hydraulic Hurth ZF 25a
Bowthruster	electric Vetus 125 Kgf (2018)
Propeller type	fixed Exalto
Propeller blades	3
Propeller shaft material	stainless steel
Shaft lubrication	water
Manual bilge pump	yes
Electric bilge pump	2 units
Bilge alarm	yes
Electrical installation	12 & 220 Volt
Generator	wet exhaust Mastervolt Whisper 3500
Batteries	4 x Mastervolt 200 Ah Deepcycle Gel
Start battery	1 x 120 Ah
Service battery	1 x 200 Ah
Bowthruster battery	1 x 100 Ah (2019)
Battery charger	Mastervolt 12/80Ah
Inverter	Mastervolt 12/2000W
Shorepower	with cable
Extra info	Installation of an exhaust cover incl. automatic engine stop for blue water sailing and also, the main engine and generator have both a water/gas separator
Extra info	Spare propeller (2018)
Extra info	Separate radio 60 Ah battery for the VHF and SW/GW

NAVIGATION

Compass	Magnetic CASSENS & PLATH compass incl. deviation tableau (2018)
Electric compass	Raymarine ST60 Tridata



Depth sounder	Raymarine ST60 Tridata
Depth sounder/log	Raymarine ST60 Tridata
Log	Raymarine ST60 Tridata
Windset	Raymarine ST60 Tridata
Repeater	Raymarine ST60 Tridata
VHF	1) Raymarine Ray7, Mast antenna + GPS 2) ICOM IC-M423G VHF transceiver with separate GPS and separate antennae at stern on multi equipment carrier & in wheelhouse
VHF handheld	Icom IC-M25
Autopilot	Raymarine ST6001
Wind vane steering install.	Wind vane PACIFIC I including separate tiller separated from hydraulic steering (2018)
Rudder angle indicator	yes
Radar	Raymarine radome 4kW 45cm (2014)
GPS	Furuno GP-33 (2018)
Radar/plotter	Raymarine 7" C95 Inside (2014)
Radar/GPS/plotter	Raymarine 9" outside (2014)
Weather receiver	9-chamber professional barograph (2018)
Navtex	Clipper 147 Easy Navtex
AIS receiver	yes
AIS transponder	yes
Radio receiver	ICOM IC-M710 SW/GW transceiver GMDSS DSC class A incl. separate whip antenna (2018) / transmitter
EPIRB	Automatic EPIRB 121 + 408 + AIS (2018)
Navigation lights	3- color light + anchor light in mast
Extra info	Satellite phone with WLAN dock + separate antenna at device carrier
Extra info	Additional navigation equipment: * Electronic + mechanic longitudinal clock ** Sextant & literature for astro-navigation *** Plump line, marked **** Professional bearing plate

EQUIPMENT

Bimini	2 x Bimini with extra side and stern roller curtains (2018)
--------	---



Sun awning	Extra large sun sail for whole main deck (2018)
Winter cover	for covering the cockpit
Cockpit table	yes
Cockpit chairs	yes
Boarding ladder	stainless steel
Anchor	CQR Plough 30kg (2014)
Anchor chain	50 meters / 10 mm
Anchor 2	Aluminium Fortress (2018)
Anchor chain	stainless steel + rope (2018)
Windlass	electrical
Deck wash	yes
Dinghy	inflatable (2012)
Outboard	Yamaha 2,5 hp (2012)
Outboard support	yes
Sea railing	stainless steel
Railing side opening gates	2 X
Pushpit	yes
Pulpit	yes
Life raft	Arimar Internsat Container 6 pers. (2014)
Life raft (pers)	2nd life raft for MOB-rescue (2018)
Danbuoy	with flag, light and additional flashlight
Safety lines on deck	2 X
Wiper	2 X
Horn	air pressure High-power Tyfon (2018)
Radar reflector	yes
Fenders	yes
Mooring lines	yes
Spare parts	Full set for longtravel
Radio-cd player	Pioneer DEH 1500
Speakers in salon	yes
Speakers in cabin	yes
Clock - barometer	yes

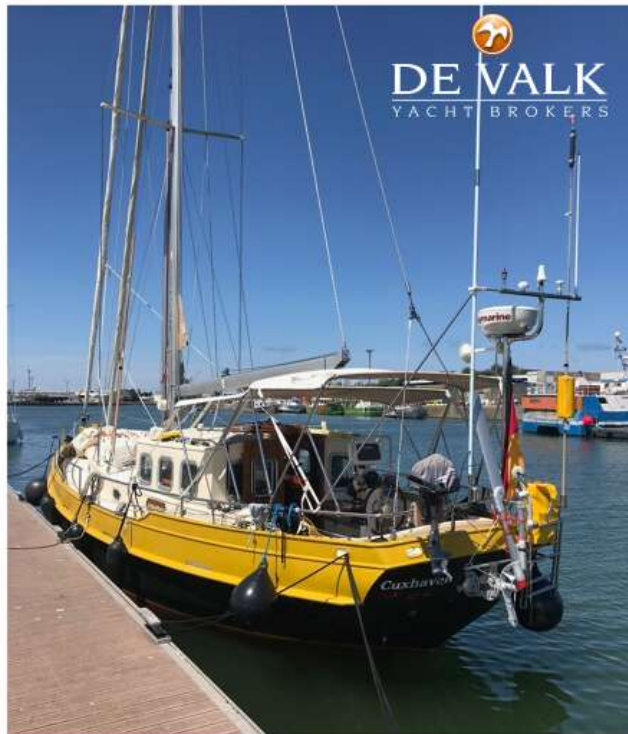


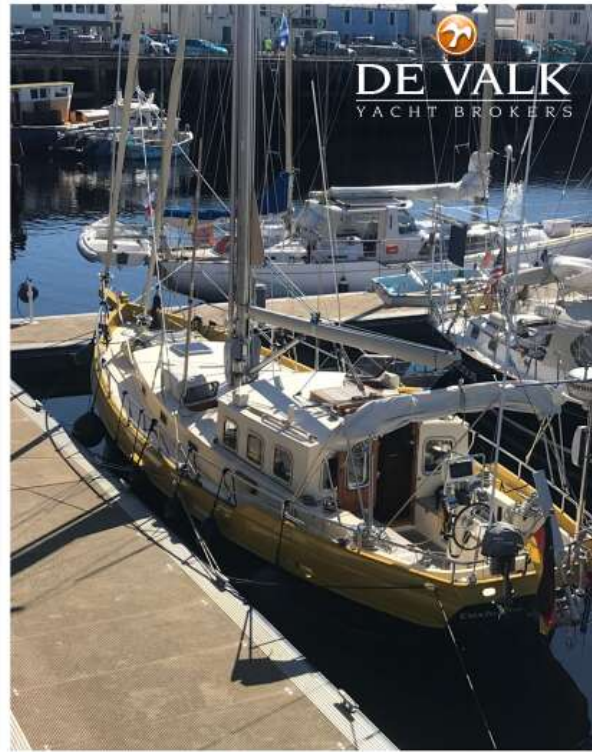
Fire extinguisher	2 X Co2, 1 x Powder
Extinguisher in engine room	: automatic system

RIGGING

Rigging	sloop-cutter
Standing rigging	wire
Brand mast	Sparcraft F-980E
Material mast	aluminium
Spreaders	yes
Mainsail	M-sails 33.6m2 with vertical battens (2016)
Stoway mast	yes
Cutterstay	yes
Jib	De Vries cutter sail
Jib I	double passat sails incl. 2 genoa booms (2018 - all unused)
Genoa I	De Vries furling Genoa 48m2
Genoa furler	yes
Cutter furler	yes
Stormjib	Bright orange (2018 - unused)
Reefing System	main in-mast furling
Boomvang	mechanical
Secondary sheet winch	2x Andersen ST 46
Genoa sheetwinches	2x Andersen STE 52 Electric
Halyard winches	2x Andersen 40 ST
Winchcovers	+ covers for navigation lights
Extra info	Standing rigging new in 2014. Standing and running rigging regularly inspected and properly substituted by ship yard.

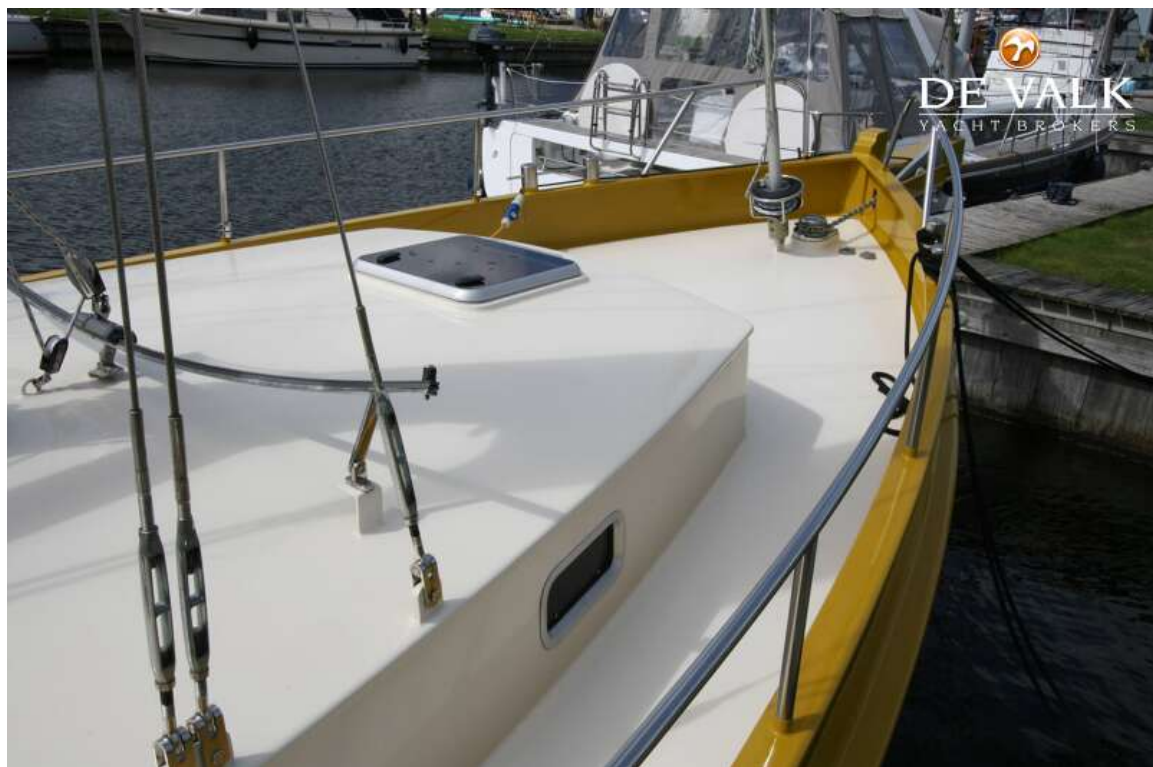








NOORDKAPER 40



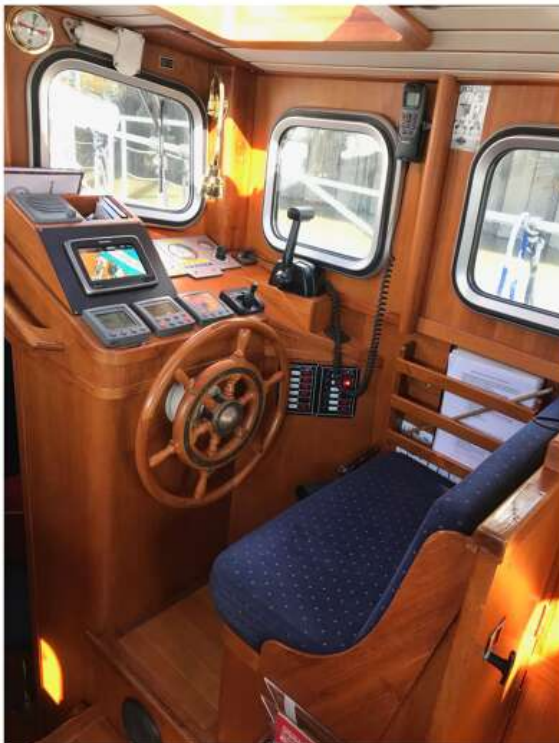
NOORDKAPER 40



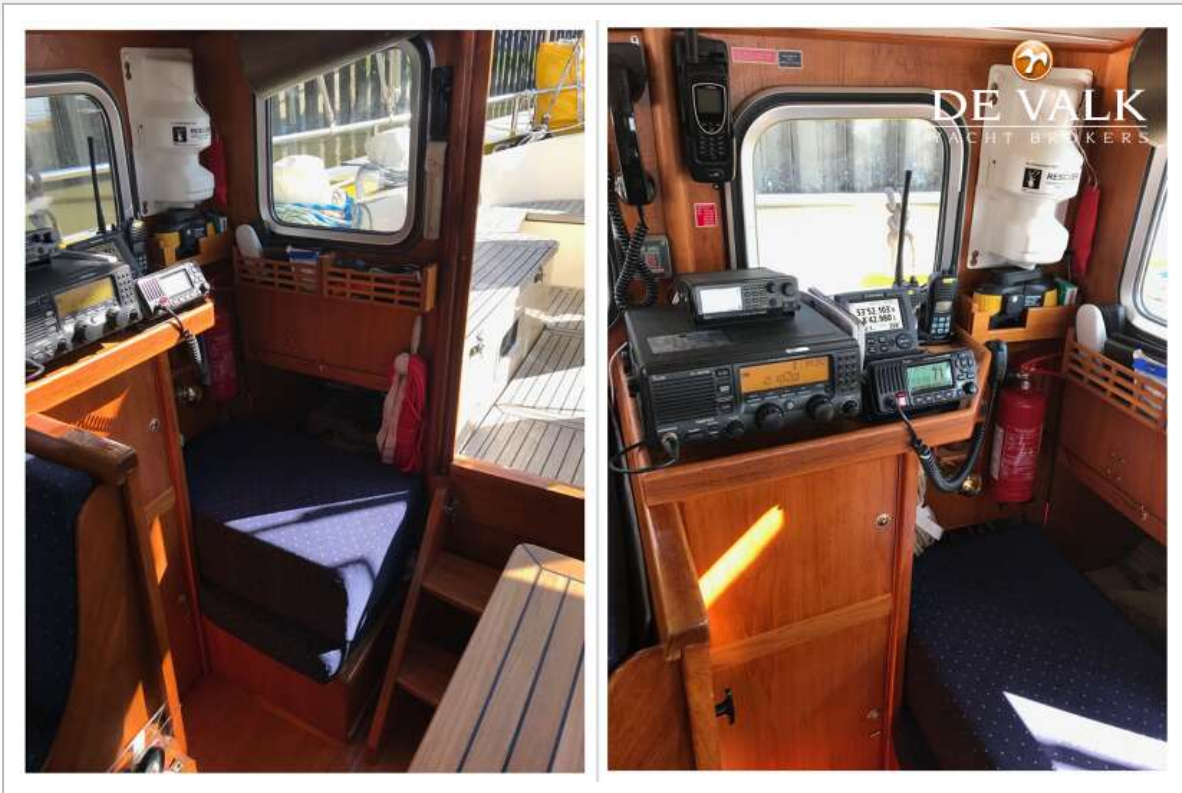
NOORDKAPER 40

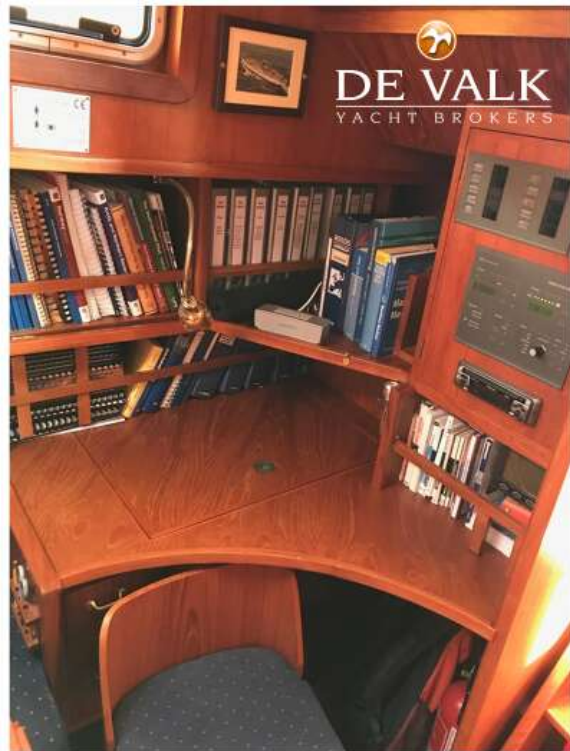


NOORDKAPER 40



NOORDKAPER 40





NOORDKAPER 40



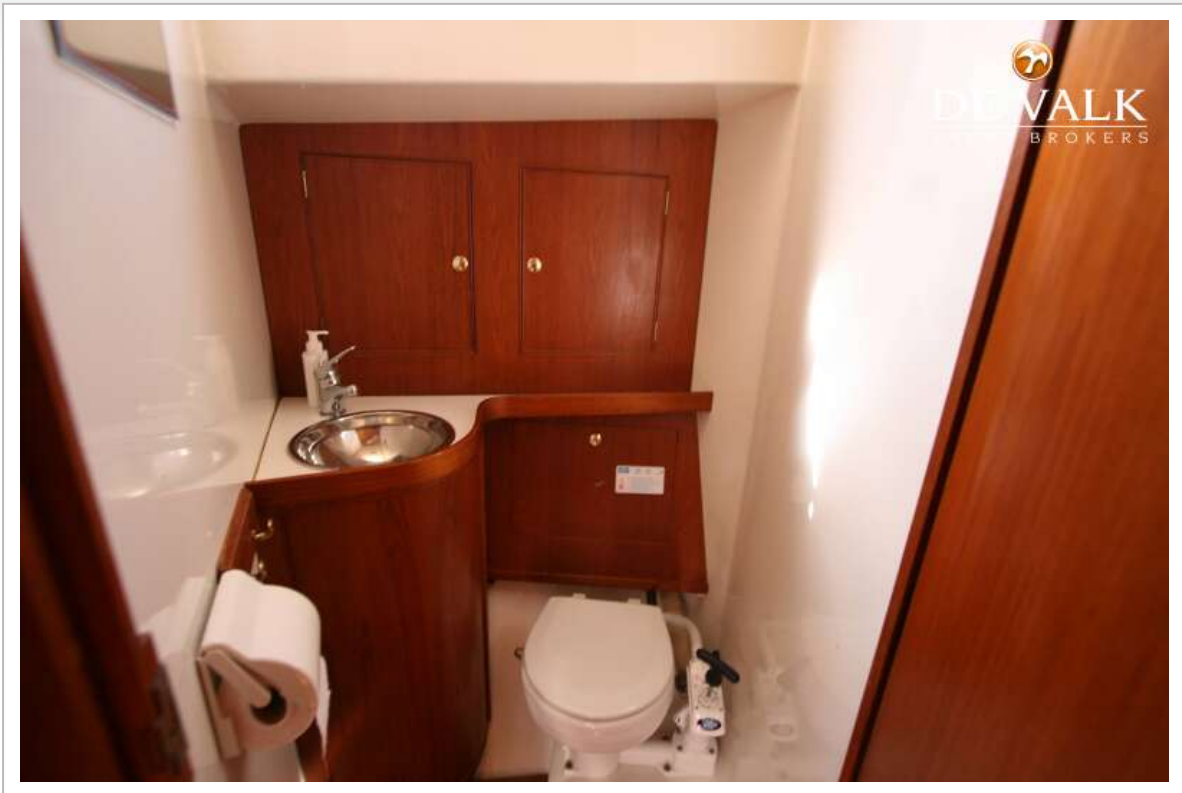


NOORDKAPER 40



NOORDKAPER 40







NOORDKAPER 40



