



SCHOONER BALTIMORE FISHING

SCHOONER BALTIMORE FISHING

BROKER'S COMMENTS

Stylish 35m steel built Schooner based on a classic Baltimore fishing Schooner. Purposely designed by Jim Krogen as a sailing vessel for passengers, giving her excellent sailing characteristics. Commissioned and built in 1987 and since used for day tourist trips along the Portuguese coast. She generates high yields under normal summer season conditions as she offers an exclusive experience to tourists exploring the famous Algarve coastline.

Reinoud Bicker Caarten

SPECIFICATIONS

Dimensions	34.70 x 7.10 x 3.00 (m)	Builder	estaleiro navais do seixal
Built	1987	Cabins	4
Material	Steel	Berths	
Engine(s)	1 x MAN 190 diesel	Hp/Kw	400.00 (hp), 294.00 (kw)
Asking price	€ 550.000 (VAT Paid)	Lying	at sales office

CONTACT

Sales office	De Valk Portugal	Telephone	+351 308 812321
Address	Edifício Administrativo - Ponta da Areia 8500 - 345 Portimão PT	E-mail	portugal@devalk.nl

DISCLAIMER

These particulars are given in good faith as supplied but cannot be guaranteed.



SCHOONER BALTIMORE FISHING

GENERAL

Model	SCHOONER BALTIMORE FISHING
Type	sailing yacht
LOA (m)	34,70
LWL (m)	26,00
Beam (m)	7,10
Draft (m)	3,00
Air draft (m)	34,00
Headroom (m)	2,00
Year built	1987
Launched	1987
Builder	Estaleiro navais do seixal
Country	Portugal
Designer	Jim Krogen
Displacement (t)	73
Gross tonnage	107
CE norm	A
Hull material	steel
Hull colour	blue
Hull shape	S-bilged
Keel type	long keel
Superstructure material	steel
Deck plate thickness (mm)	5mm
Deck material	steel
Deck finish	teak New 2017
Window frame	steel
Portholes	brass
Insulation	glasswool
Fuel tank (litre)	stainless steel 2500
Fuel tank 2 (litre)	steel 2500
Level indicator (fuel tank)	yes



SCHOONER BALTIMORE FISHING

Fuel daytank (litre)	steel 1000
Level indicator (daytank)	yes
Freshwater tank (litre)	steel 2x2500
Level indicator (freshwater)	yes
Blackwater tank (litre)	steel 1000
Greywater tank (litre)	steel 1000
Wheel steering	hydraulic
Outside helm position	yes
Emergency tiller	yes
More info on hull	paint 2018
More info on paintwork	2 comonent Cold galvanized

ACCOMMODATION

Cabins	4
Crew cabin	1
Crew berths	4
Interior	mahogany
Layout	Master cabin and guest cabin aft, saloon-bar midships, galley and crew cabin forward
Floor	cork
Open cockpit	yes
Aft deck	yes
Saloon	yes
Headroom saloon (m)	2.10
Air-conditioning	reverse cycle airco
Navigation center	yes
Chart table	yes
Aft Cabin	yes
Dining room	With a bar
Galley	yes
Countertop	stainless steel



SCHOONER BALTIMORE FISHING

Sink	stainless steel
Cooker	electric
Extractor	yes
Microwave	yes
Microwave/oven combi	yes
Fridge	yes
Freezer	yes
Hot water system	220V
Water pressure system	electrical
Ice maker	yes
Crockery	yes
Owners cabin	yes
Wardrobe	hanging/drawers/shelves
Bathroom	en suite
Toilet	en suite
Wash basin	at the toilet
Shower	en suite
Guest cabin 1	2 single beds
Wardrobe	hanging/drawers/shelves
Bathroom	en suite
Toilet	en suite
Toilet system	yes
Wash basin	in the bathroom
Shower	en suite
Extra info	Separate mens and ladies toilet rooms in the saloon
Crew cabin(s)	4 bunkbeds
Bathroom (crew)	Ensuite to crew cabin
Toilet system	yes

MACHINERY

No of engines	1
---------------	---



SCHOONER BALTIMORE FISHING

Make	MAN
Type	190
HP	400
kW	294
Fuel	diesel
Year installed	2006
Maximum speed (kn)	10
Cruising speed (kn)	8
Consumption (l/hr)	70
Engine hours	14714
Drive	shaft
Shaft seal	Pack
Engine controls	yes
Gearbox	hydraulic
Exhaust	watercooled
Propeller type	fixed
Shaft lubrication	water
Electric bilge pump	1x engine
Electrical installation	220
Generator	Onan 18kv
Generator 2	Cummins 43Kv
Batteries	Tudor 9x
Start battery	engine and generator 2x 230Ah
Service battery	yes
Battery monitor	yes
Battery charger	yes
Shorepower	yes

NAVIGATION

Compass	yes
Depth sounder	yes



SCHOONER BALTIMORE FISHING

Windset	yes
VHF	2x
VHF handheld	yes
Rudder angle indicator	yes
Radar	yes
GPS	yes
Radar/GPS/plotter	yes
Electronis chart(s)	yes
Navigation lights	yes

EQUIPMENT

Cockpit cushions	yes
Boarding ladder	aluminum 2x
Gangway	yes
Anchor	Bruce
Anchor chain	13mm galvanized 100m
Anchor 2	yes
Anchor chain	13mm galvanized 100m
Windlass	hydraulic
Dinghy	rigid inflatable Zerbros
Outboard	Yamaha 25hp
Outboard support	yes
Sea railing	wood
Life raft	container 2x
Life raft (pers)	65
Last life raft survey	Annualy
Lifejackets	+ 25 children +40 jackets 134 adults
Horn	electric
Radar reflector	yes
Fenders	yes
Mooring lines	yes



SCHOONER BALTIMORE FISHING

Radio-cd player	yes
Surround Sound System	yes
Cockpit speakers	yes
Clock - barometer	yes
Fire extinguisher	12x
Auto extinguisher system	yes

RIGGING

Rigging	schooner
Standing rigging	wire 2000
Material mast	Corten steel
Spreaders	3xdouble each mast
Keel stepped mast	yes
Mainsail	yes
Mainsail cover	yes
Cutterstay	yes
Topsail	yes
Jib	yes
Primary sheet winch	yes
Secondary sheet winch	yes
Extra info	innerjib stay sail and main stay sail 2020 rest 2012 outer jib 2020 queen sails 2x 2012



SCHOONER BALTIMORE FISHING



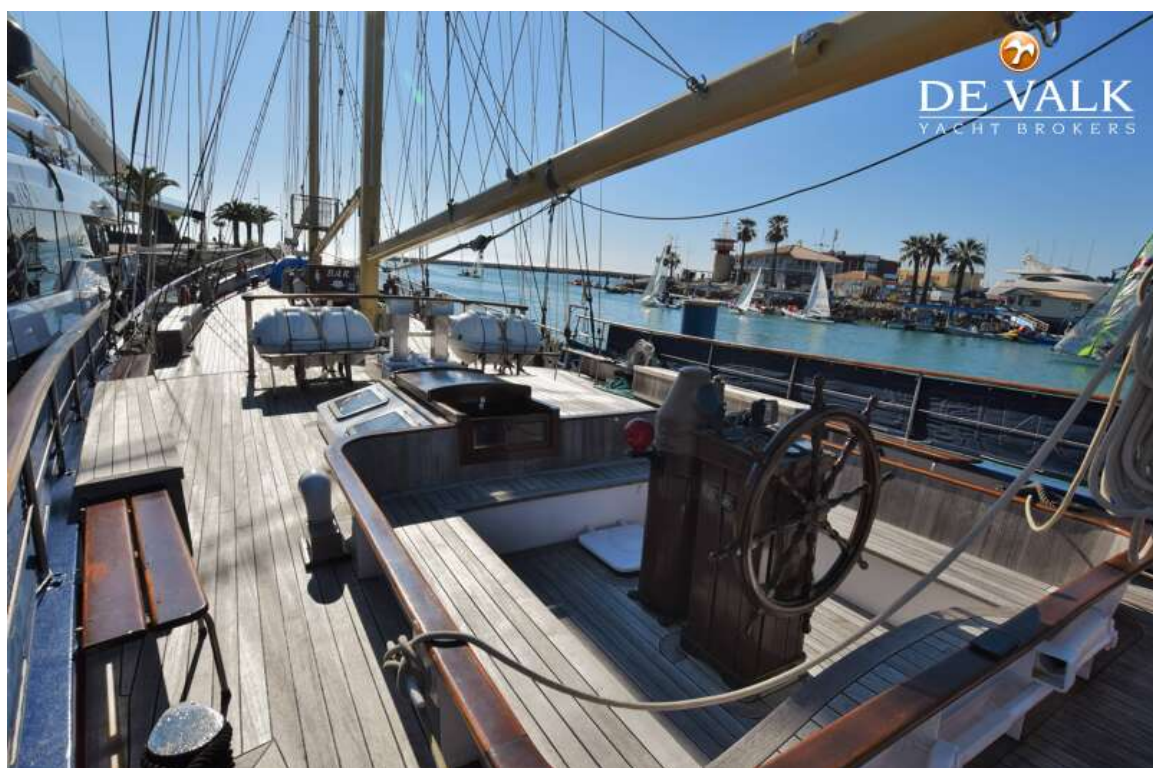
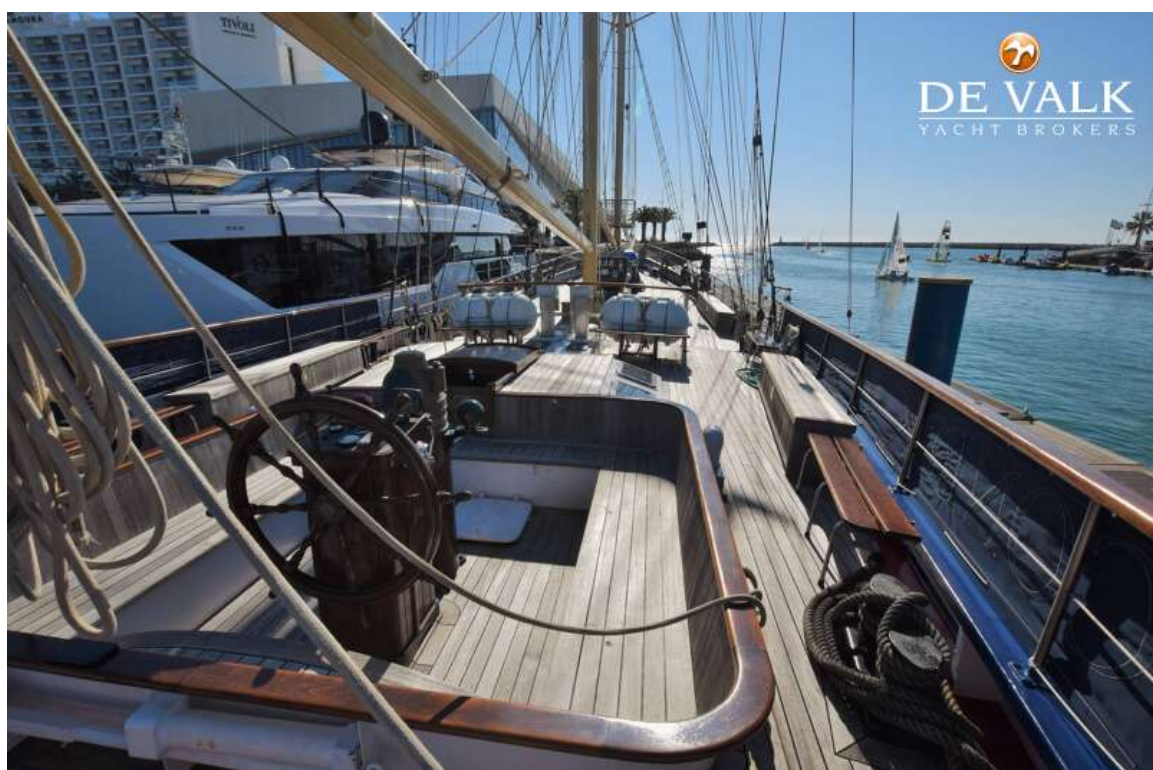
SCHOONER BALTIMORE FISHING



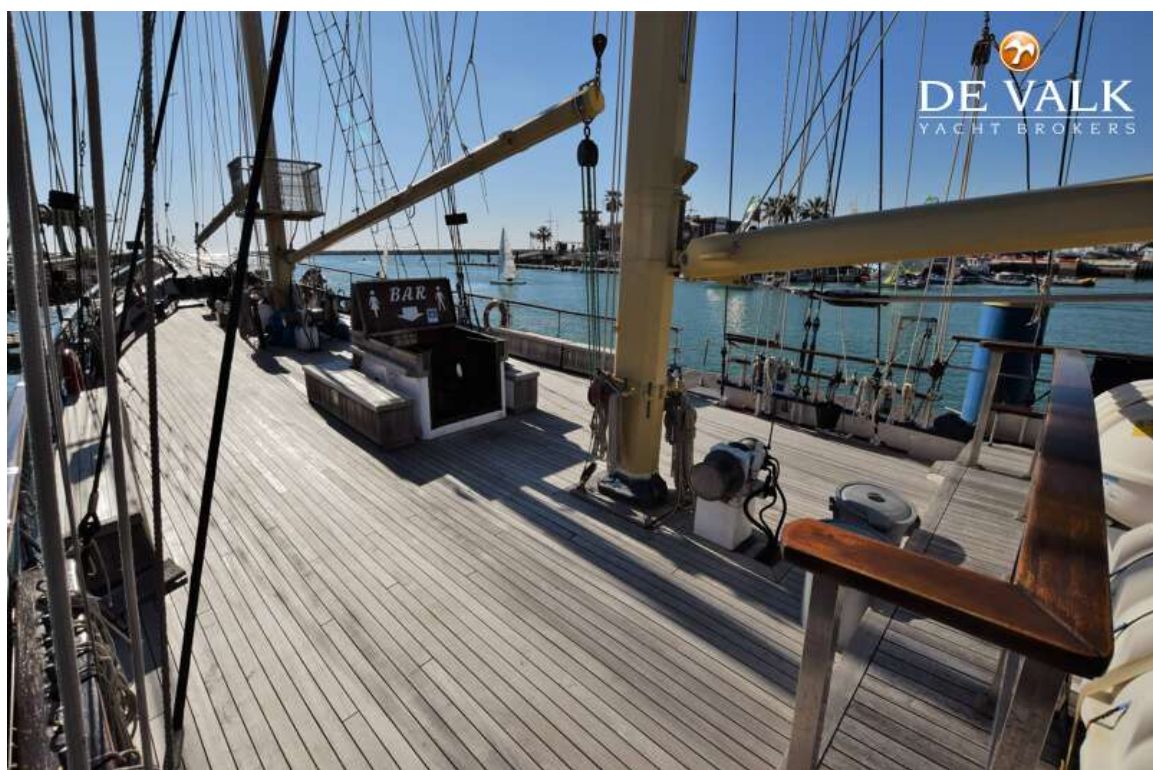
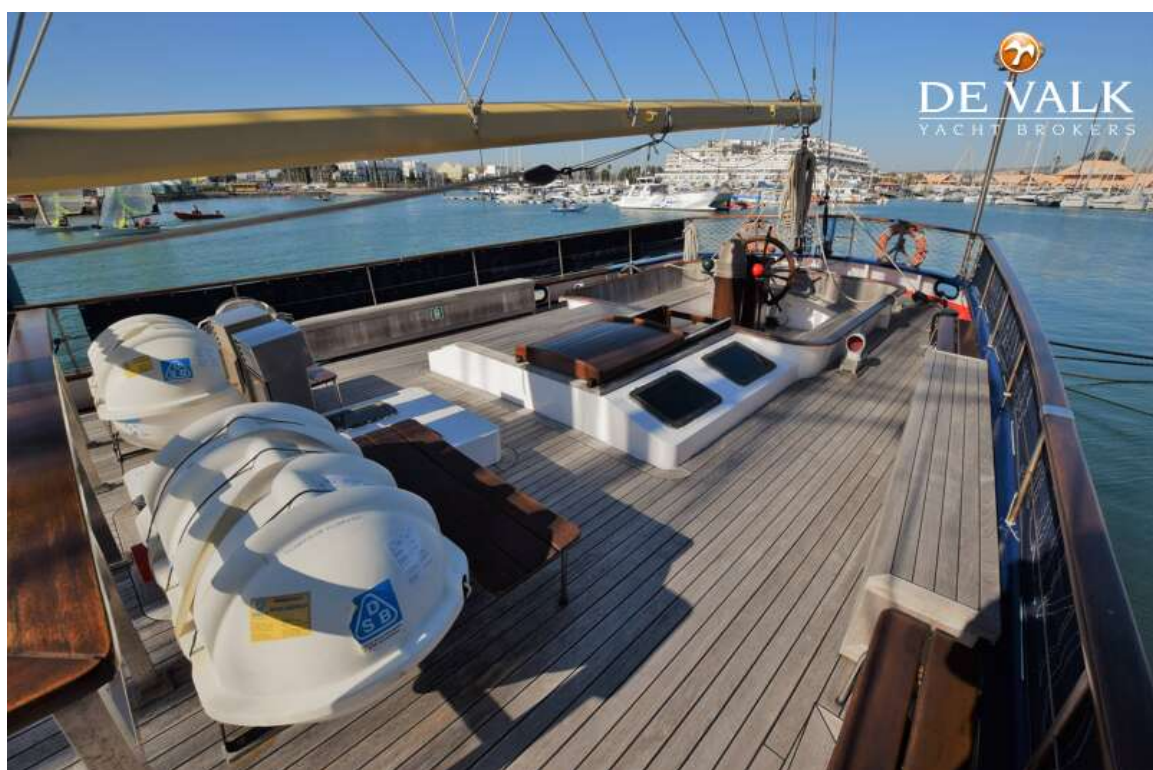
SCHOONER BALTIMORE FISHING



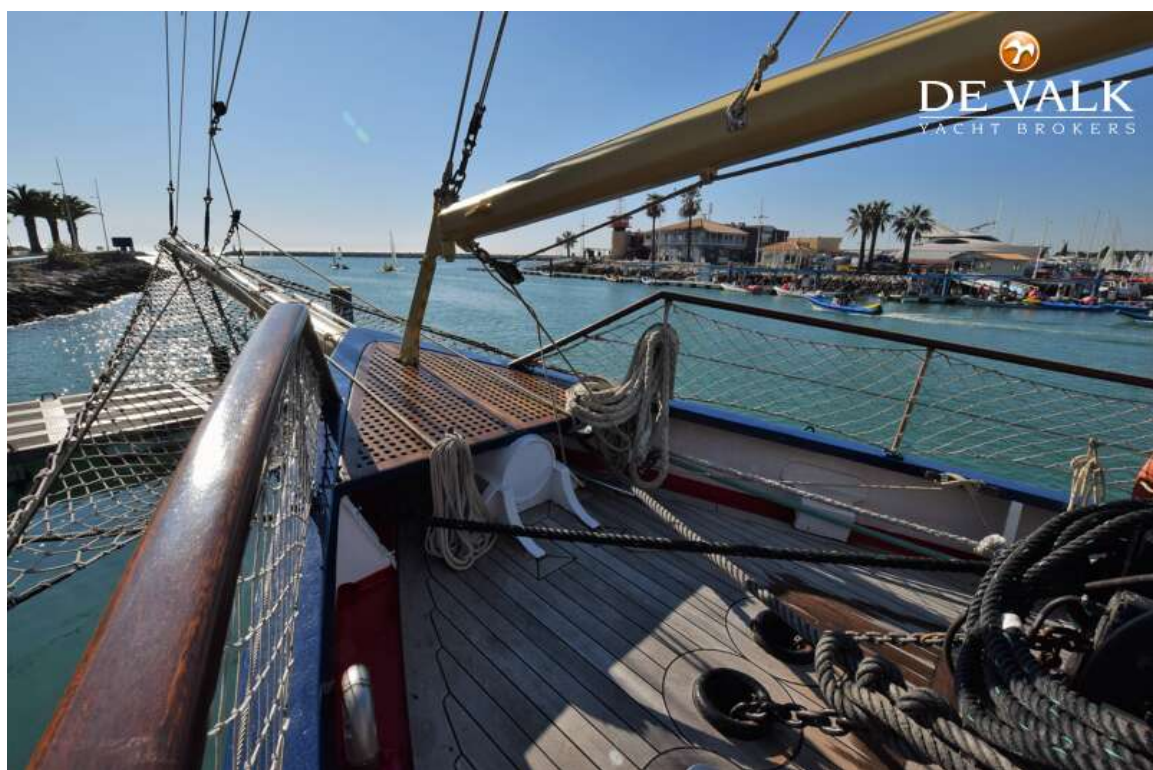
SCHOONER BALTIMORE FISHING



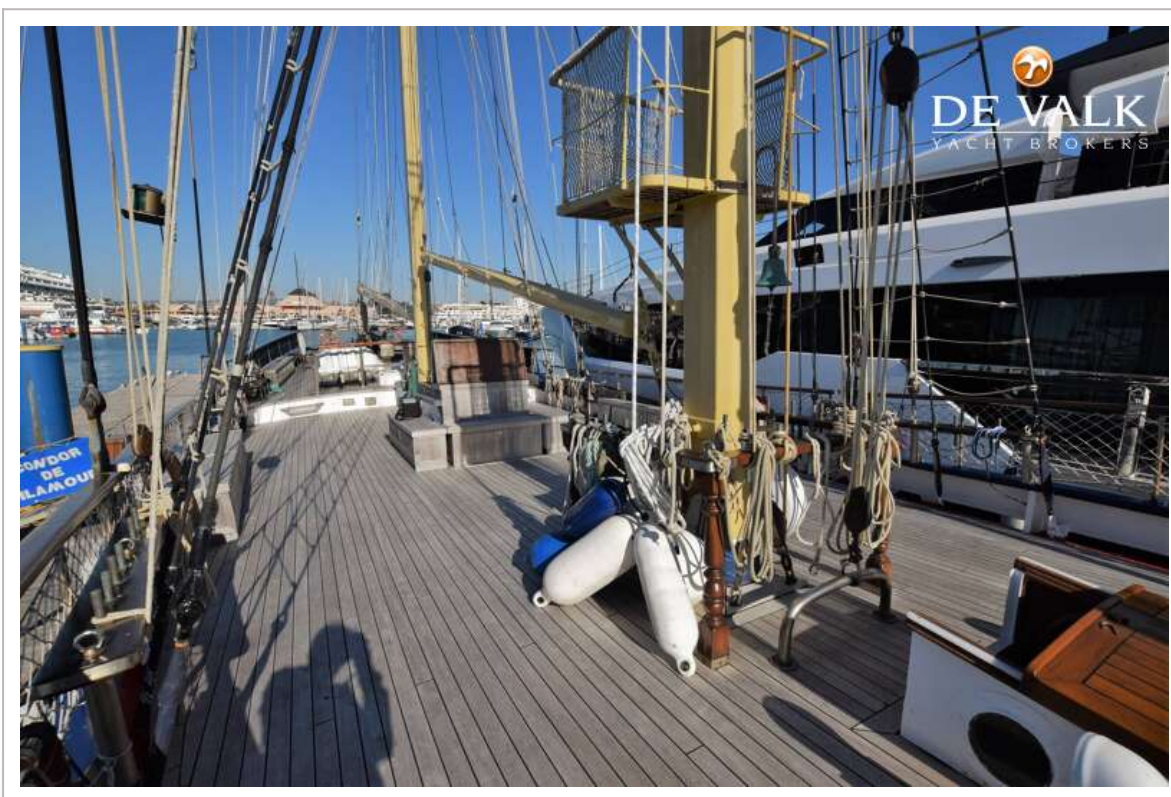
SCHOONER BALTIMORE FISHING



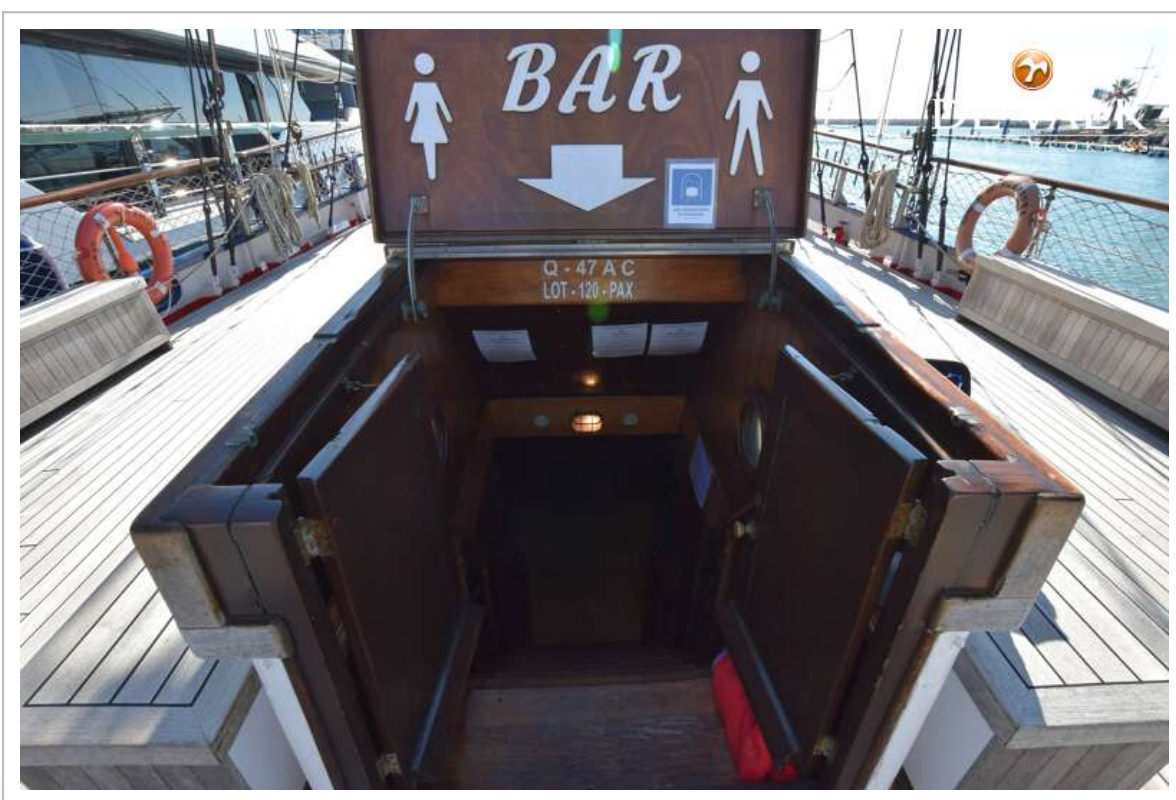
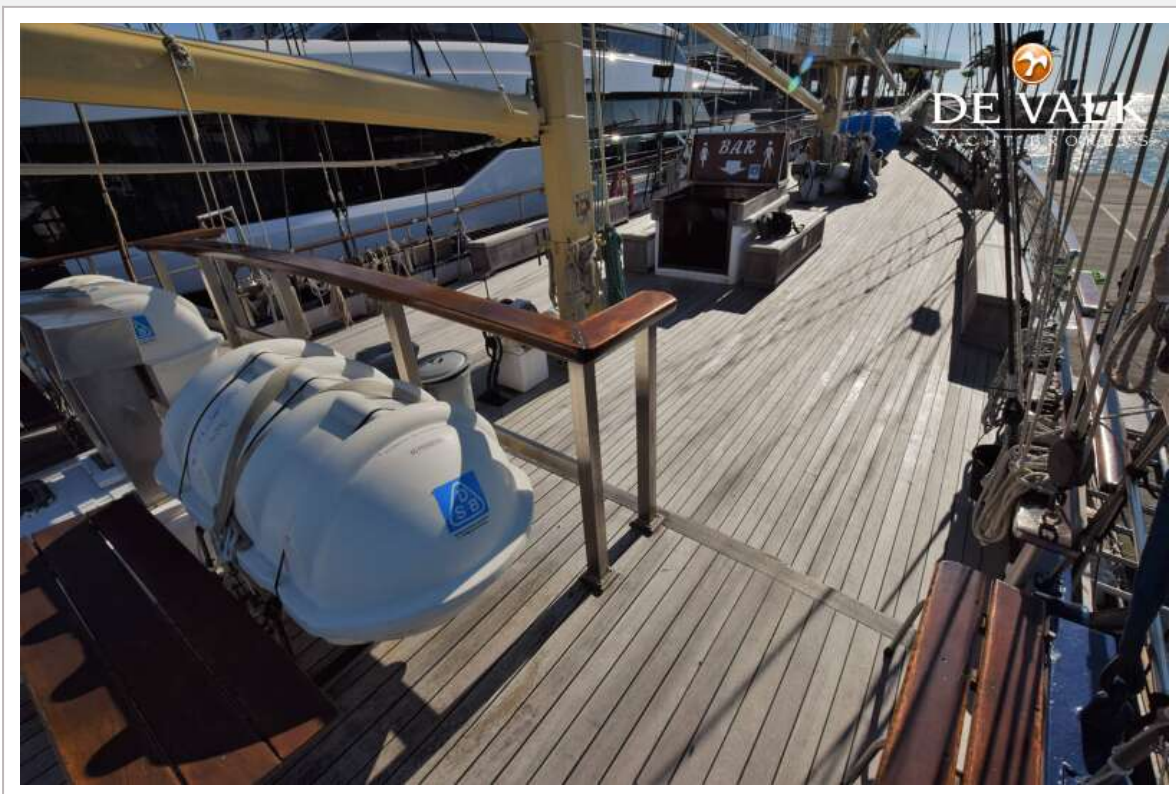
SCHOONER BALTIMORE FISHING



SCHOONER BALTIMORE FISHING



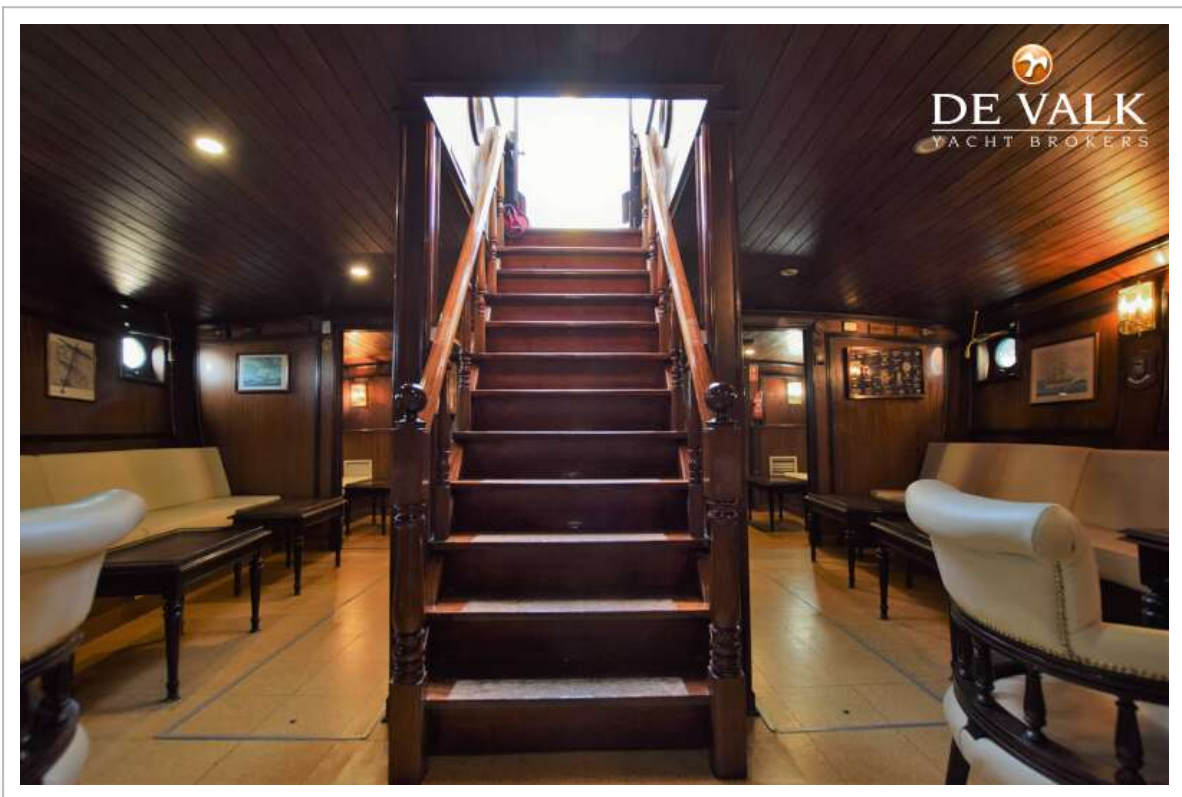
SCHOONER BALTIMORE FISHING



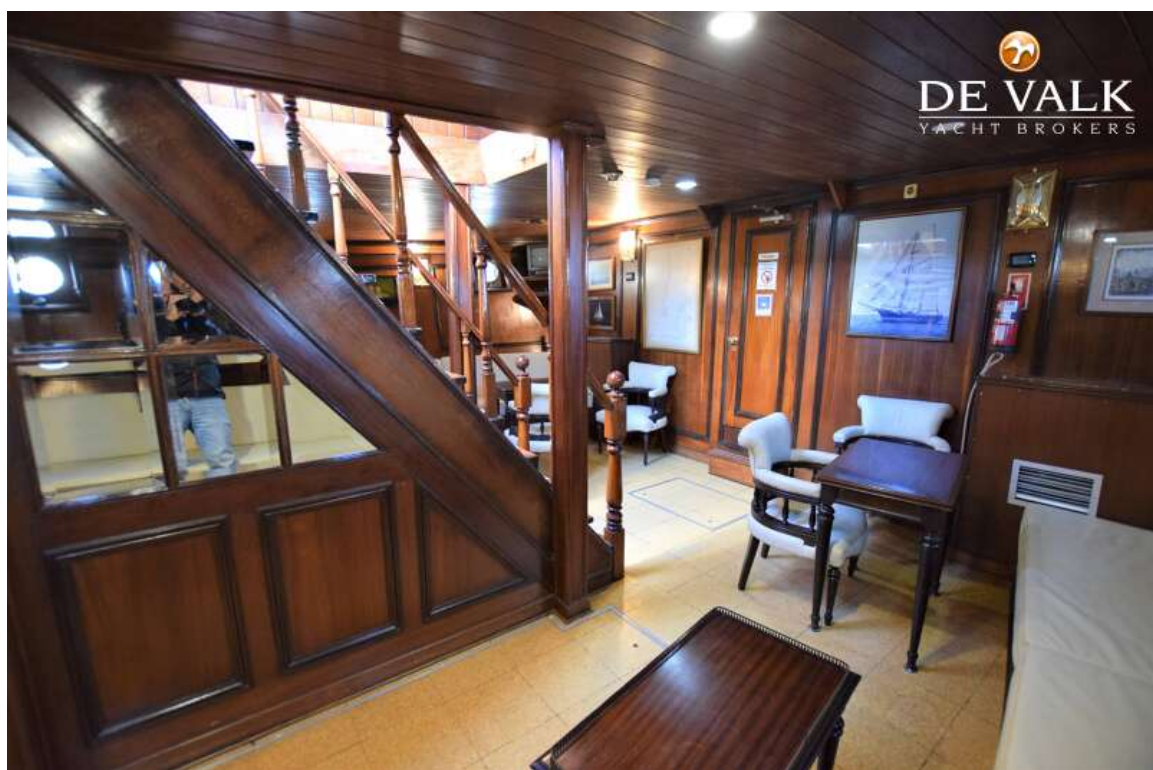
SCHOONER BALTIMORE FISHING



SCHOONER BALTIMORE FISHING



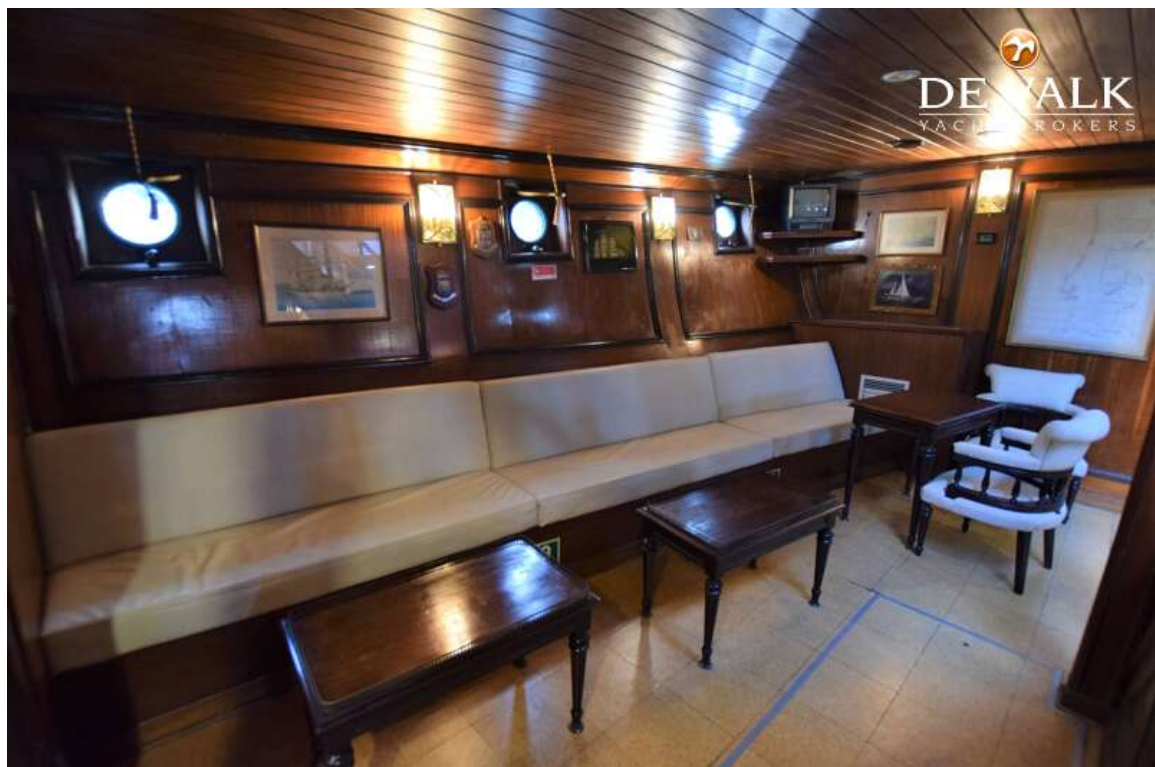
SCHOONER BALTIMORE FISHING



SCHOONER BALTIMORE FISHING



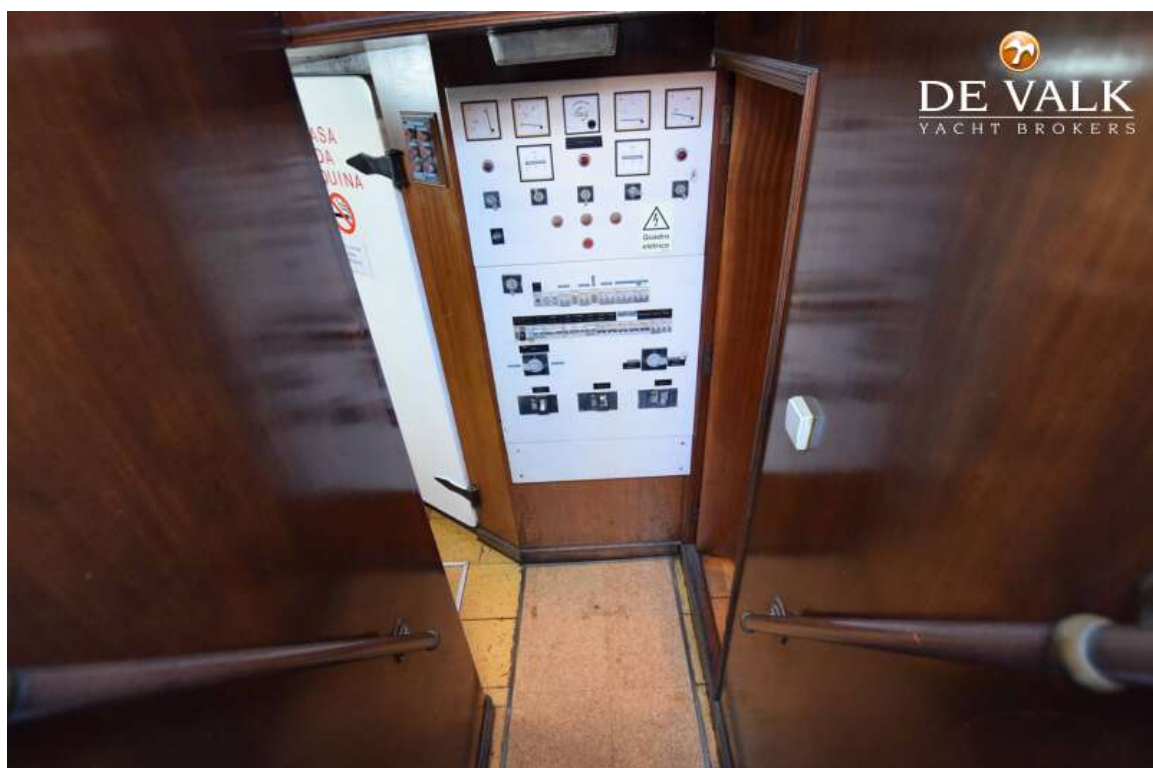
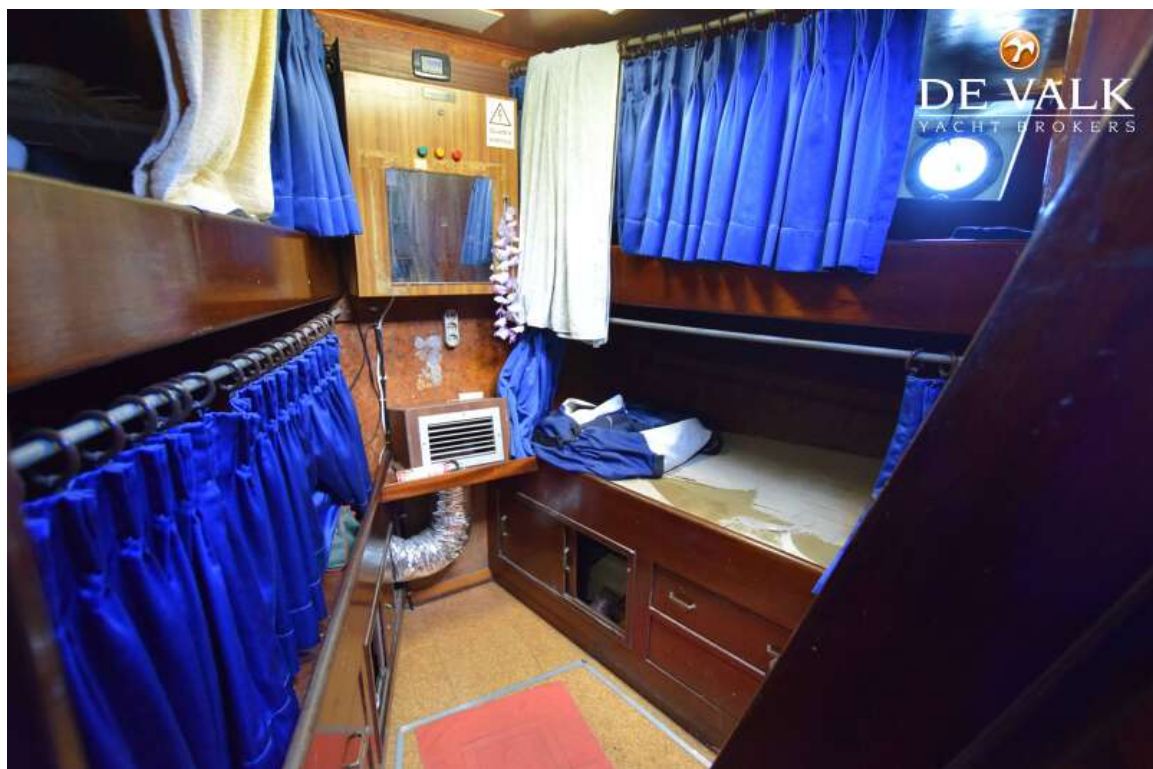
SCHOONER BALTIMORE FISHING



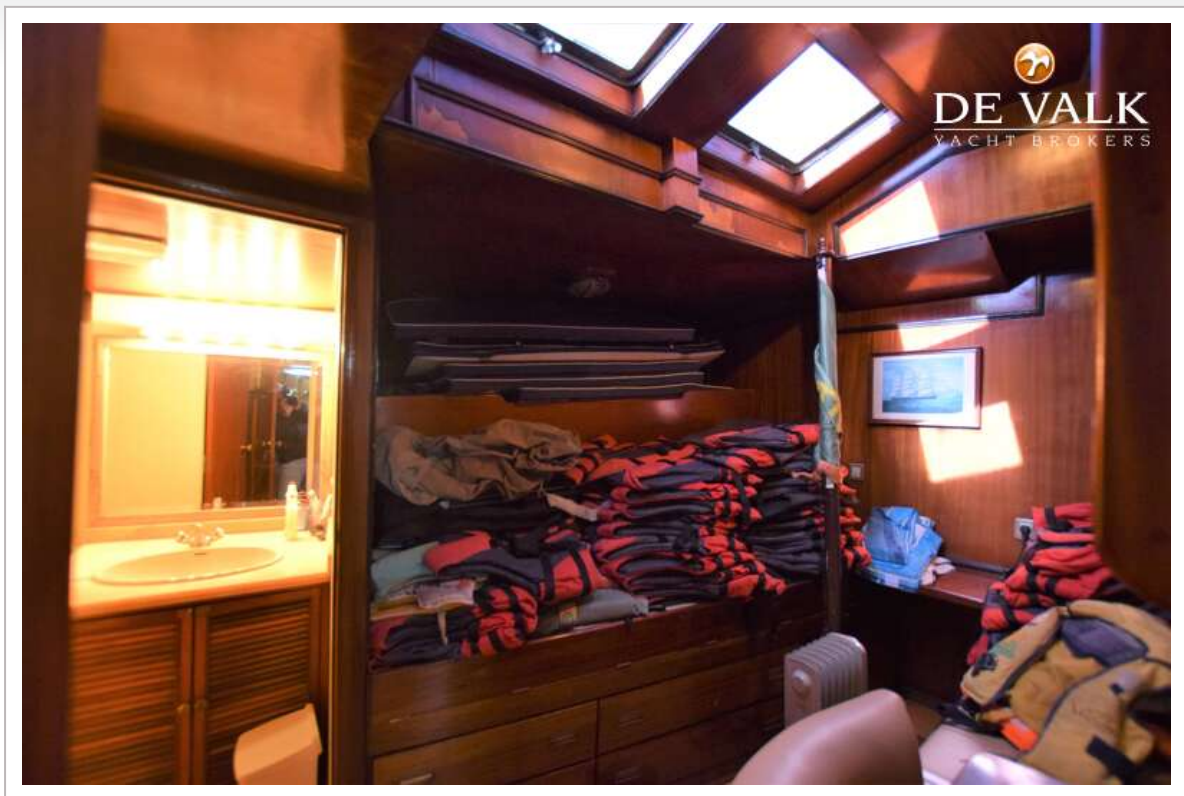
SCHOONER BALTIMORE FISHING



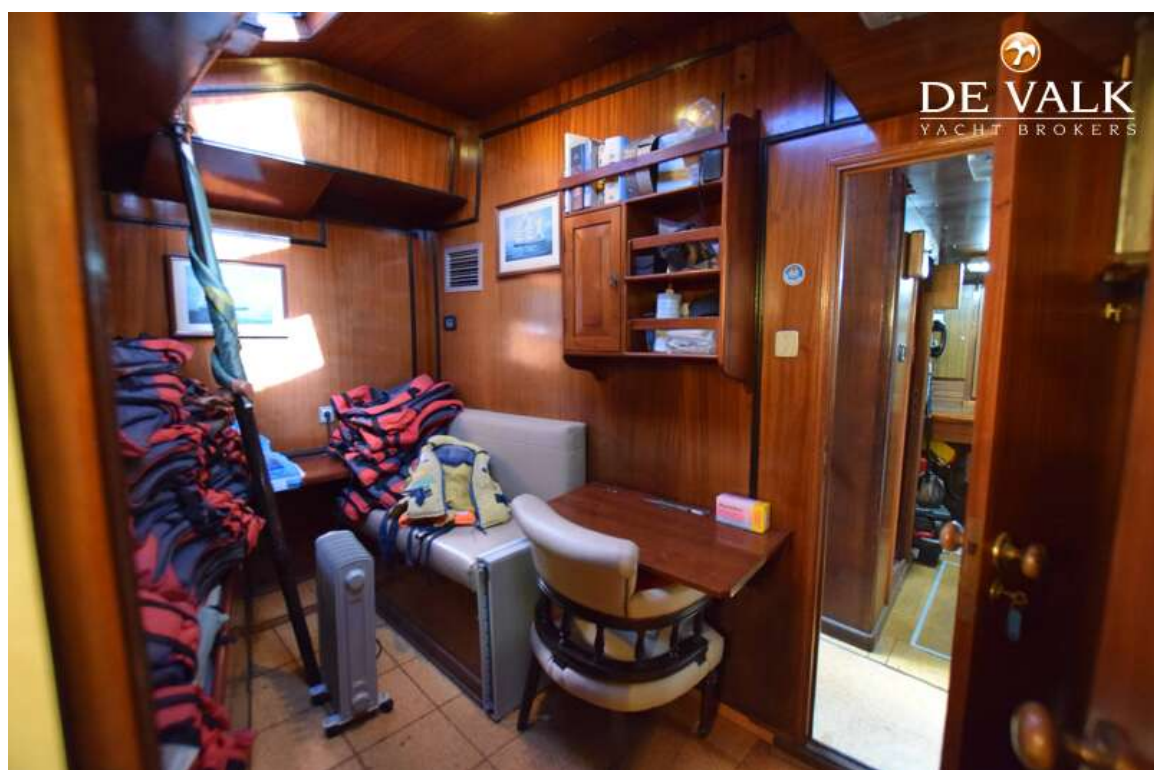
SCHOONER BALTIMORE FISHING



SCHOONER BALTIMORE FISHING



SCHOONER BALTIMORE FISHING



SCHOONER BALTIMORE FISHING

