



VALK VOYAGER 1750

VALK VOYAGER 1750

BROKER'S COMMENTS

A very fully equipped 17.5-metre Valk Voyager. This vessel has all the conveniences for partial or permanent living on board; double glazing, Kabola heating and hot water system, washer-dryer combination, dishwasher and even a sewage connection. Over the past three years, much has been invested in the ship to make her habitable for longer periods of time. Starting, bow and stern thruster batteries are double and the service package consists of two (non-flammable) MG lithium batteries. She also has a bow and stern thruster. In short, a fully equipped vessel.

Mark Hesselmans

SPECIFICATIONS

Dimensions	17.50 x 4.40 x 1.20 (m)	Builder	Van der Valk - Sprang Kapelle (NL)
Built	2003	Cabins	3
Material	Steel	Berths	6
Engine(s)	1 x Vetus Deutz DT676 diesel	Hp/Kw	230.00 (hp), 169.28 (kw)
Asking price	€ 249.500 (VAT Paid)	Lying	at sales office

CONTACT

Sales office	De Valk Loosdrecht B.V.	Telephone	+31 (0)35 582 90 30
Address	't Breukeleveense Meentje 6 1231LM Loosdrecht / Wijdmeren NL	E-mail	loosdrecht@devalk.nl

DISCLAIMER

These particulars are given in good faith as supplied but cannot be guaranteed.



VALK VOYAGER 1750

GENERAL

Model	VALK VOYAGER 1750
Type	motor yacht
LOA (m)	17,50
Beam (m)	4,40
Draft (m)	1,20
Air draft (m)	4,70
Air draft min (m)	2,75
Headroom (m)	2,00
Year built	2003
Builder	Van der Valk - Sprang Kapelle (NL)
Country	The Netherlands
Designer	Gijs van der Valk
Displacement (t)	28
CE norm	B
Hull material	steel
Hull colour	white
Hull shape	hard chine
Keel type	long keel
Superstructure material	steel
Rubbing strake	stainless steel
Deck material	steel
Deck finish	non-skid paint
Superstructure deck finish	non-skid paint
Cockpit deck finish	non-skid paint
Window frame	aluminium
Window material	double glazing
Deckhatch	3x Moonlight
Portholes	aluminium 18x
Radar arch	collapsible
Fuel tank (litre)	steel 1200



VALK VOYAGER 1750

Fuel tank 2 (litre)	2x 400 (for heating) can be connected to main fuel system engine
Level indicator (fuel tank)	yes
Freshwater tank (litre)	stainless steel 2x 400
Level indicator (freshwater)	yes
Blackwater tank (litre)	polyethylene 78
Blackwater tank extraction	deck extraction + pump + sewer connection
Wheel steering	hydraulic
Outside helm position	mechanical

ACCOMMODATION

Cabins	3
Berths	6
Interior	teak
Floor	vinyl
Aft deck	yes
Deck saloon	yes
Saloon	yes
Headroom saloon (m)	2,00
Heating	central heating Kabola KB45 - 2021 - (serviced in 2024)
Dinette	yes
Dinette to convert into berth	yes
Opening door to aft deck	yes
Galley	yes
Countertop	plastic
Sink	stainless steel
Cooker	induction Bosch (2021)
Oven	Tefal (loose)
Extractor	Bauknecht
Fridge	1x Dometic (2021) in galley + 1x Etna (2021) fridge in guest cab
Freezer	In Etna fridge



VALK VOYAGER 1750

Hot water system	on central heating Kabola KB45 - 2021 -(serviced in 2024)
Water pressure system	electrical
Dishwasher	Siemens (2021)
Owners cabin	French bed
Bed length (m)	2,00
Wardrobe	hanging and shelves
Bathroom	shared
Toilet	shared
Toilet system	electric Jabsco
Wash basin	in the bathroom
Shower	shared
Guest cabin 1	bunk bed
Wardrobe	shelves
Guest cabin 2	v-bed
Wardrobe	shelves
Bathroom	en suite
Toilet	separate
Toilet system	electric
Wash basin	at the toilet
Shower	separate
Washing machine/dryer combi	AEG 7000 Series (2021)

MACHINERY

No of engines	1
Make	Vetus Deutz
Type	DT676
HP	230
kW	169.28
Fuel	diesel
Maximum speed (kn)	9,5
Cruising speed (kn)	6



VALK VOYAGER 1750

Consumption (l/hr)	5
Engine cooling system	freshwater heat exchanger
Drive	shaft
Engine controls	bowden cable
Gearbox	hydraulic Hurth
Bowthruster	electric
Sternthruster	electric
Propeller type	fixed
Propeller shaft material	stainless steel
Shaft lubrication	grease
Electric bilge pump	yes
Electrical installation	12V/24V/230V
Generator	wet exhaust 10kVA - Mitsubishi/Jelmer Valk
Start battery	2 x Optima Red Top (2024)
Service battery	2x Lithium-Ion 25,8V/280Ah - MG (2021)
Generator battery	1x Wilco 12V/72Ah
Bowthruster battery	2 x Optima red (2022)
Sternthruster battery	2x Optima Red Top (2024)
Battery monitor	Victron digital display
Battery charger/inverter	Victron Quattro 24v 8000va 120a (2021)
Shorepower	with cable
Insulation transformer	Victron 7000W 115/230V (2021)
Extra info	Service engine and generator in 2022

NAVIGATION

Depth sounder	Clipper (2021)
Log	Clipper (2021)
Rudder angle indicator	yes
Navigation lights	yes

EQUIPMENT

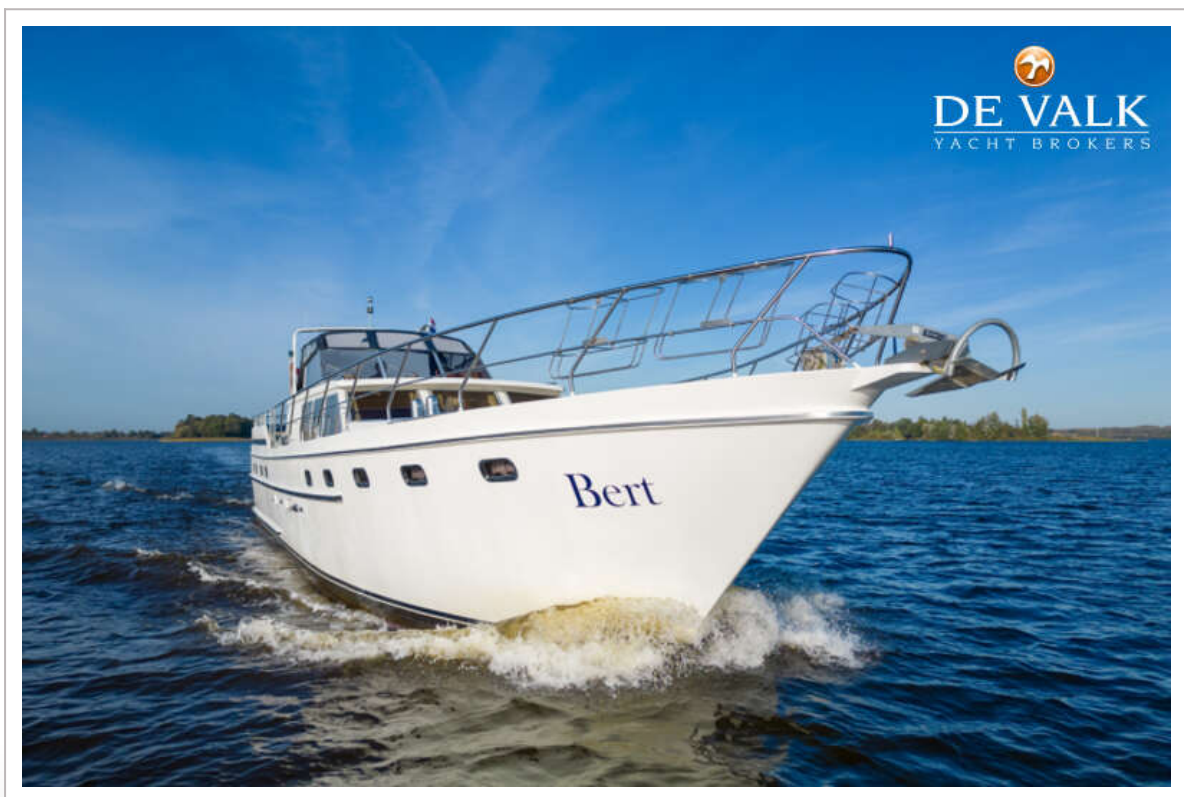


VALK VOYAGER 1750

Sprayhood	yes
Bimini	yes
Cockpit cushions	yes
Bathing platform	yes
Boarding ladder	stainless steel
Anchor	yes
Windlass	manual
Sea railing	stainless steel
Grab rail (superstructure)	stainless steel
Railing side opening gates	yes
Wiper	3x
Horn	air pressure
Speakers in salon	Not working
Speakers in cabin	Not working



VALK VOYAGER 1750



VALK VOYAGER 1750



VALK VOYAGER 1750



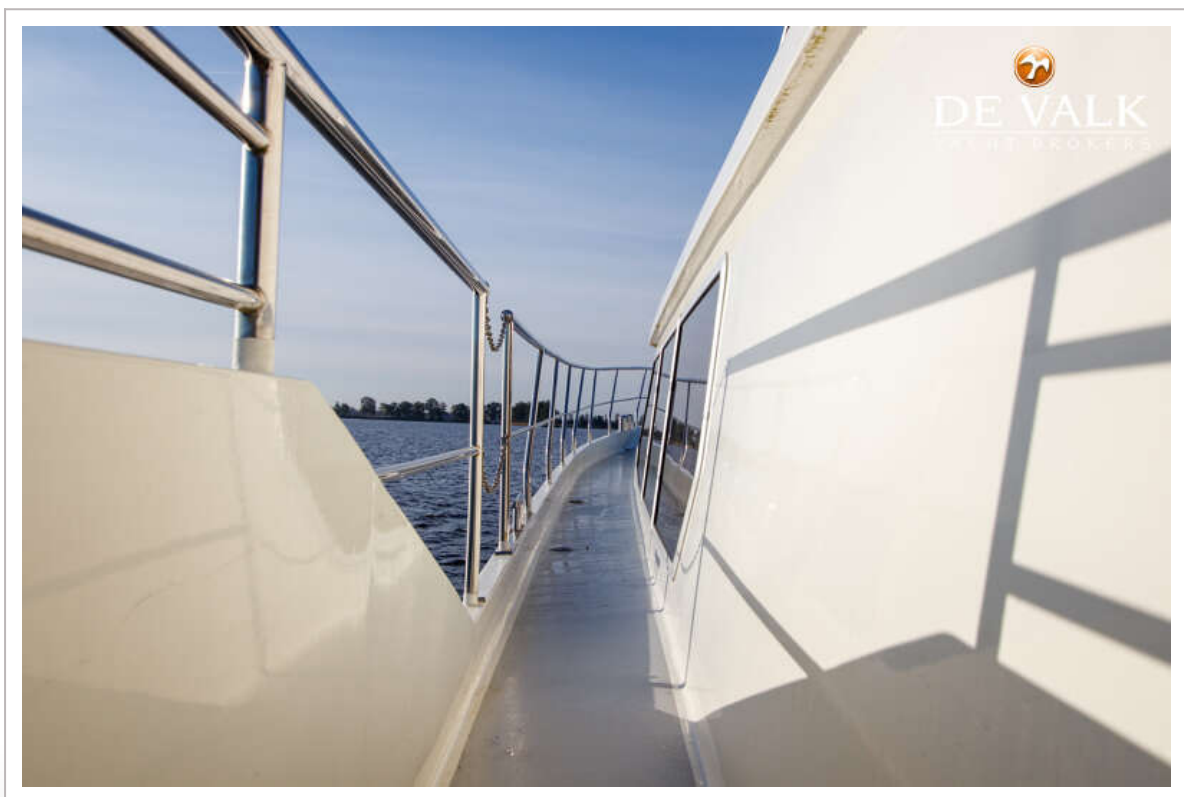
VALK VOYAGER 1750



VALK VOYAGER 1750



VALK VOYAGER 1750



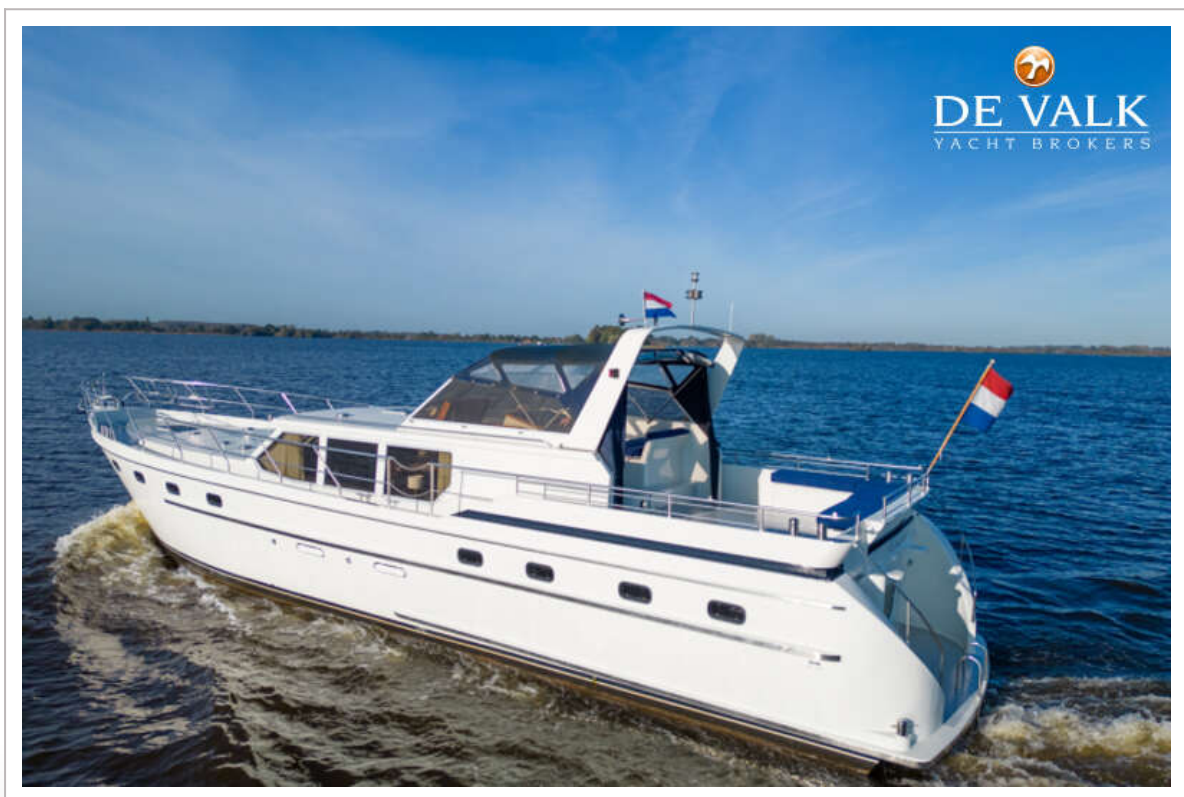
VALK VOYAGER 1750



VALK VOYAGER 1750



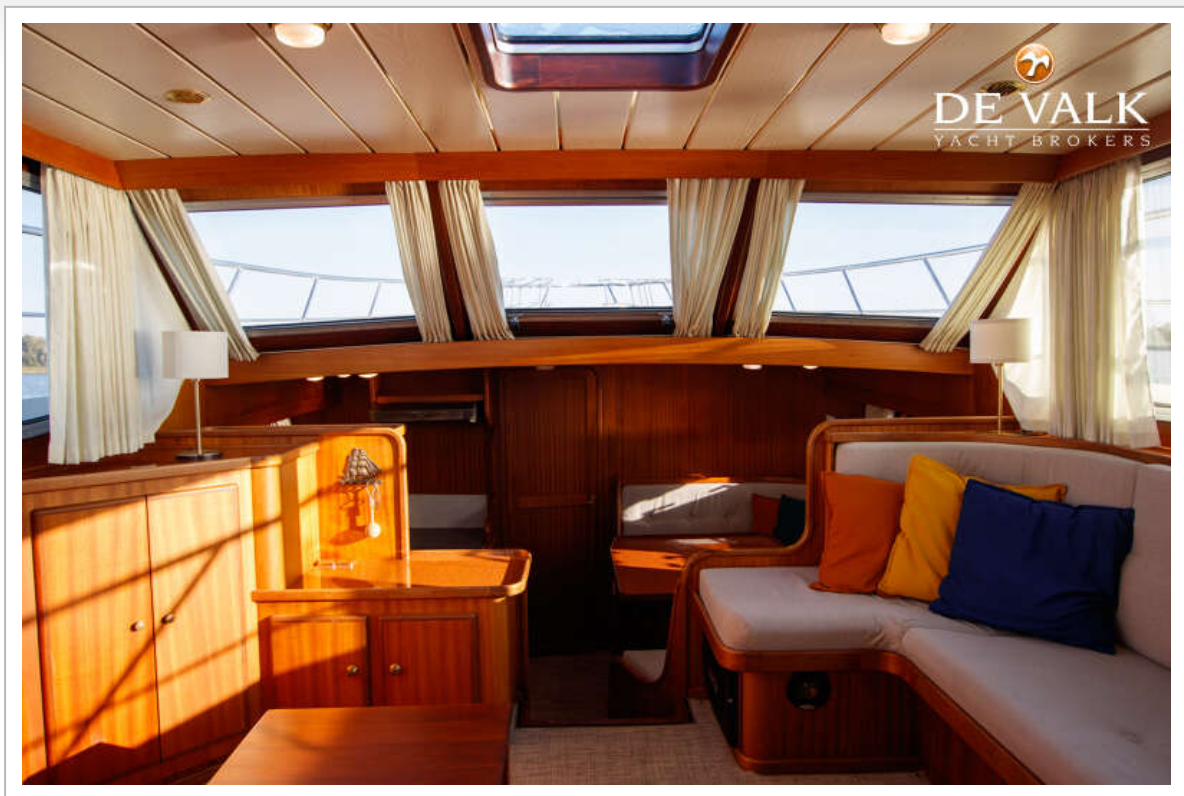
VALK VOYAGER 1750



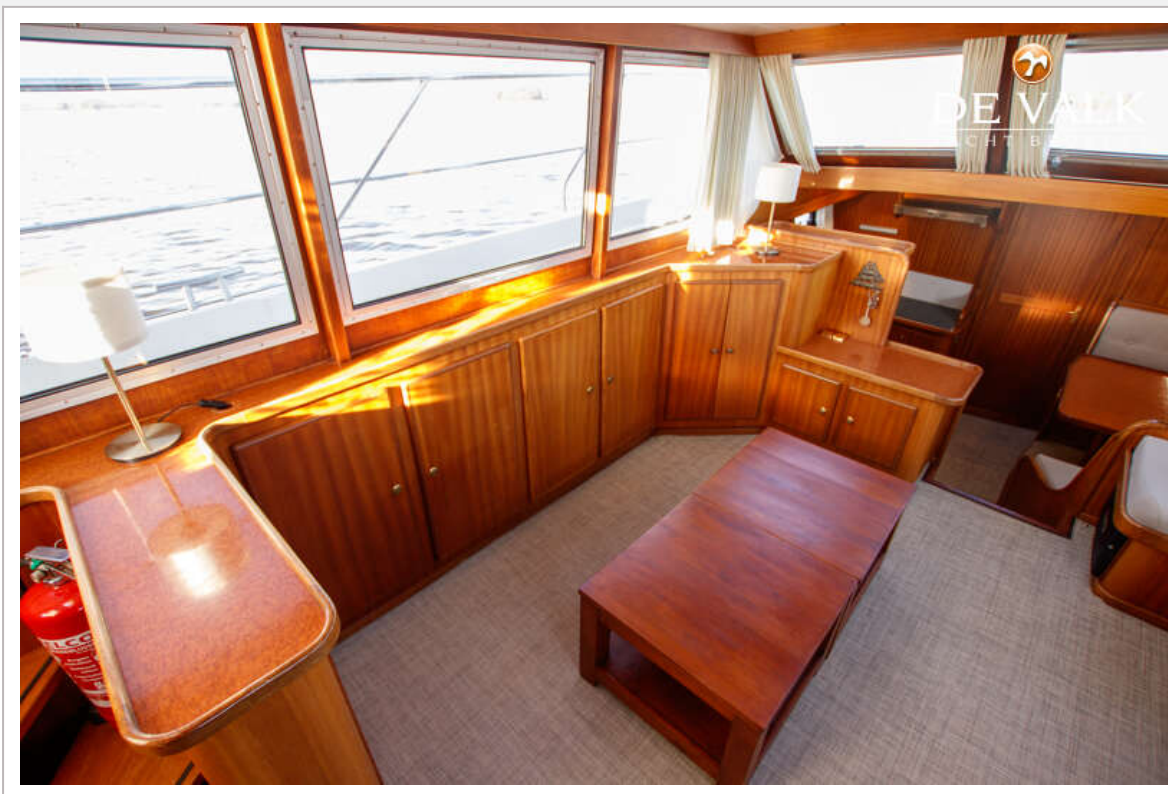
VALK VOYAGER 1750



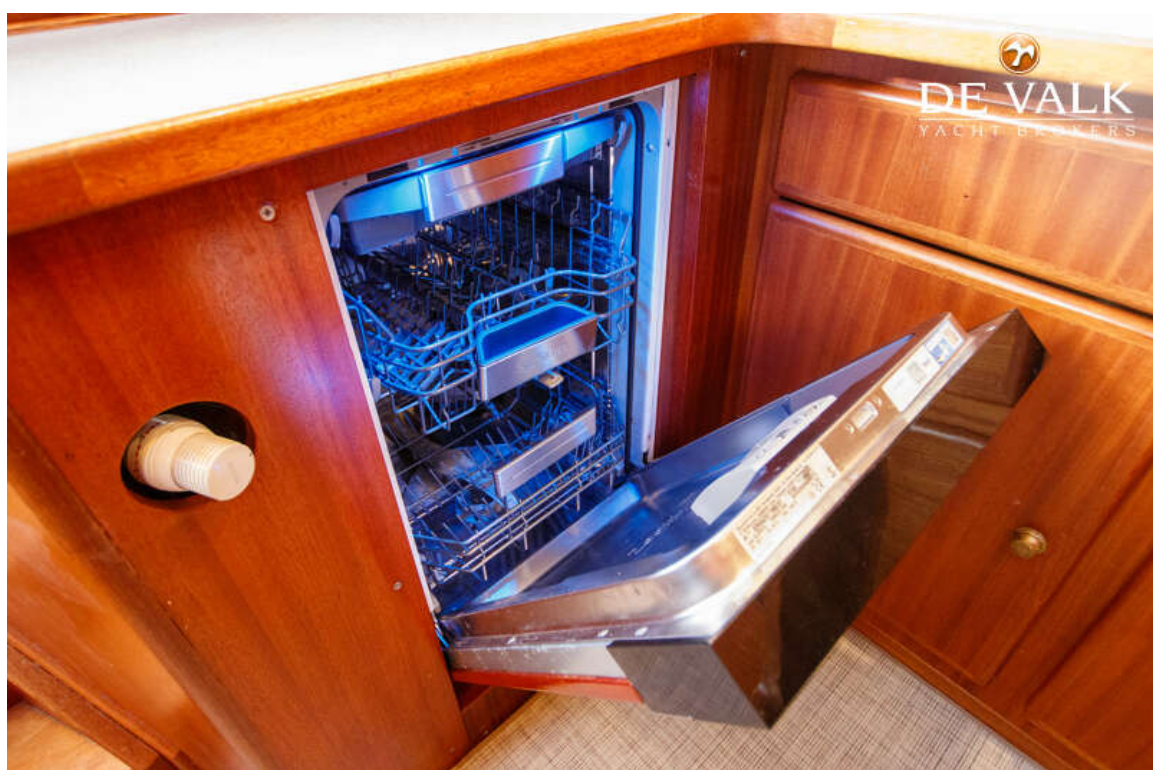
VALK VOYAGER 1750



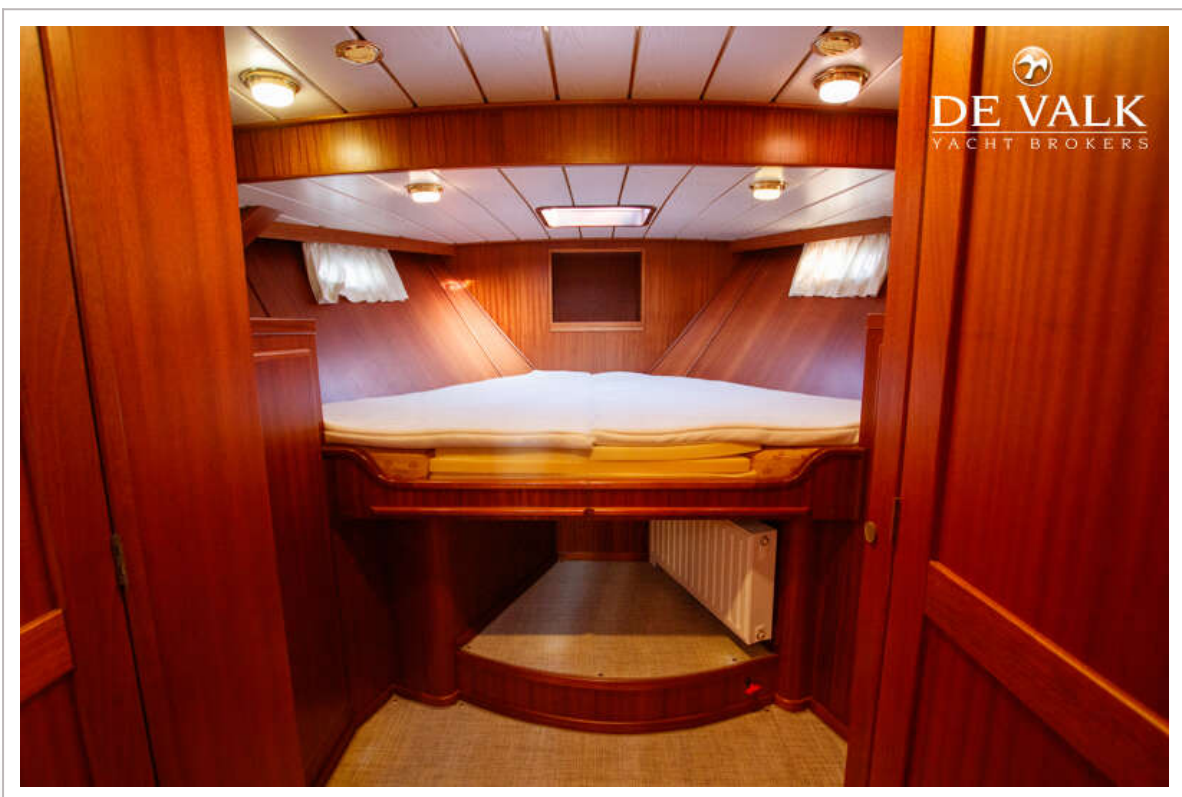
VALK VOYAGER 1750



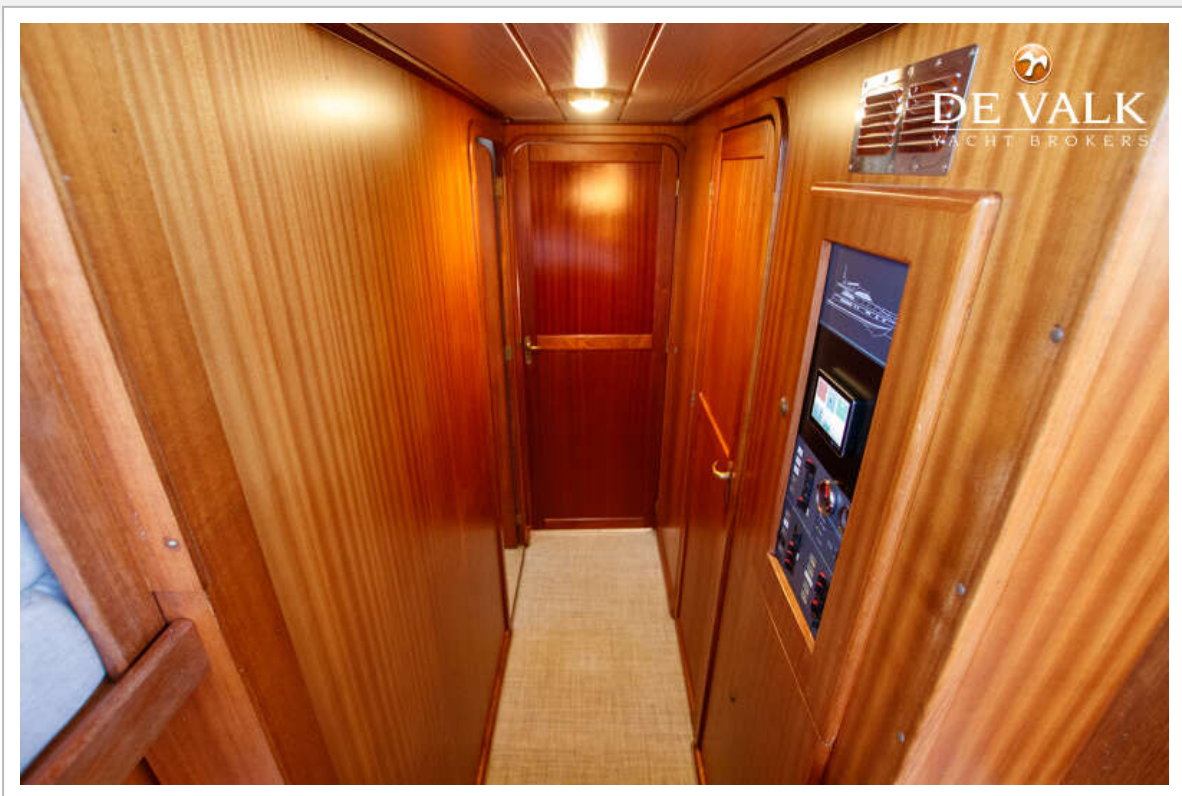
VALK VOYAGER 1750



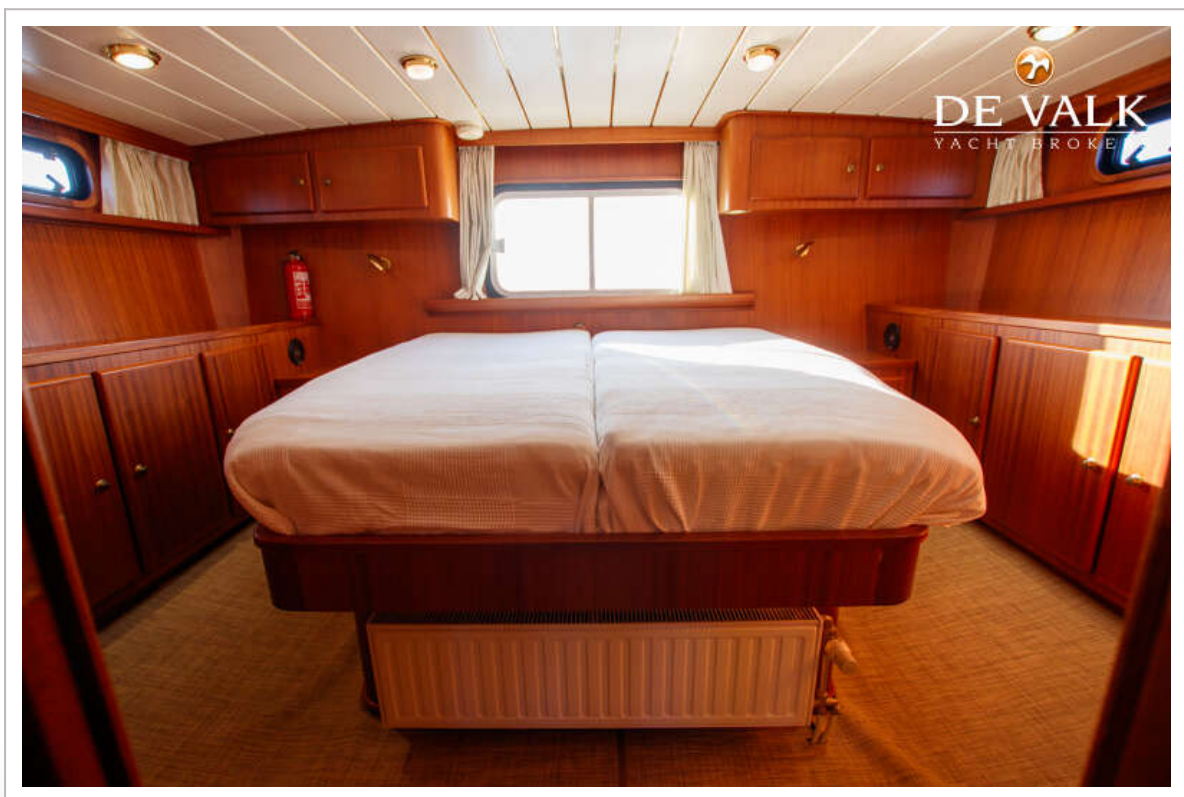
VALK VOYAGER 1750



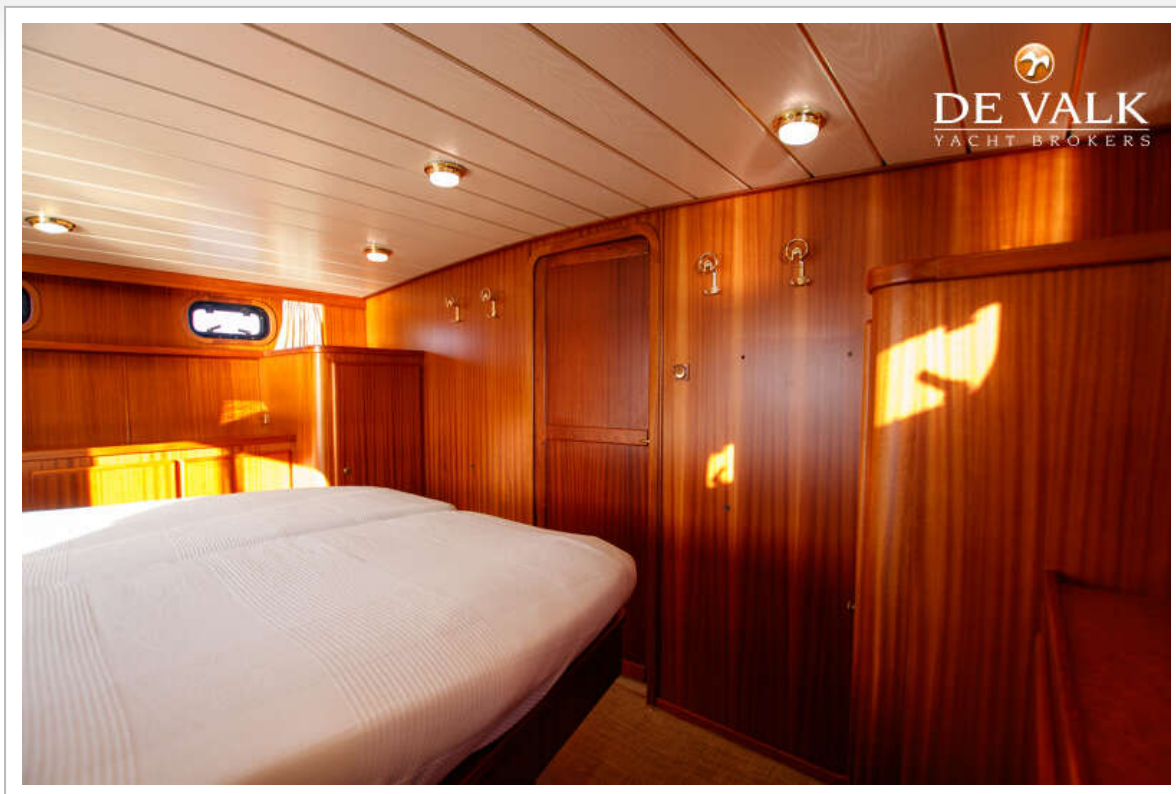
VALK VOYAGER 1750



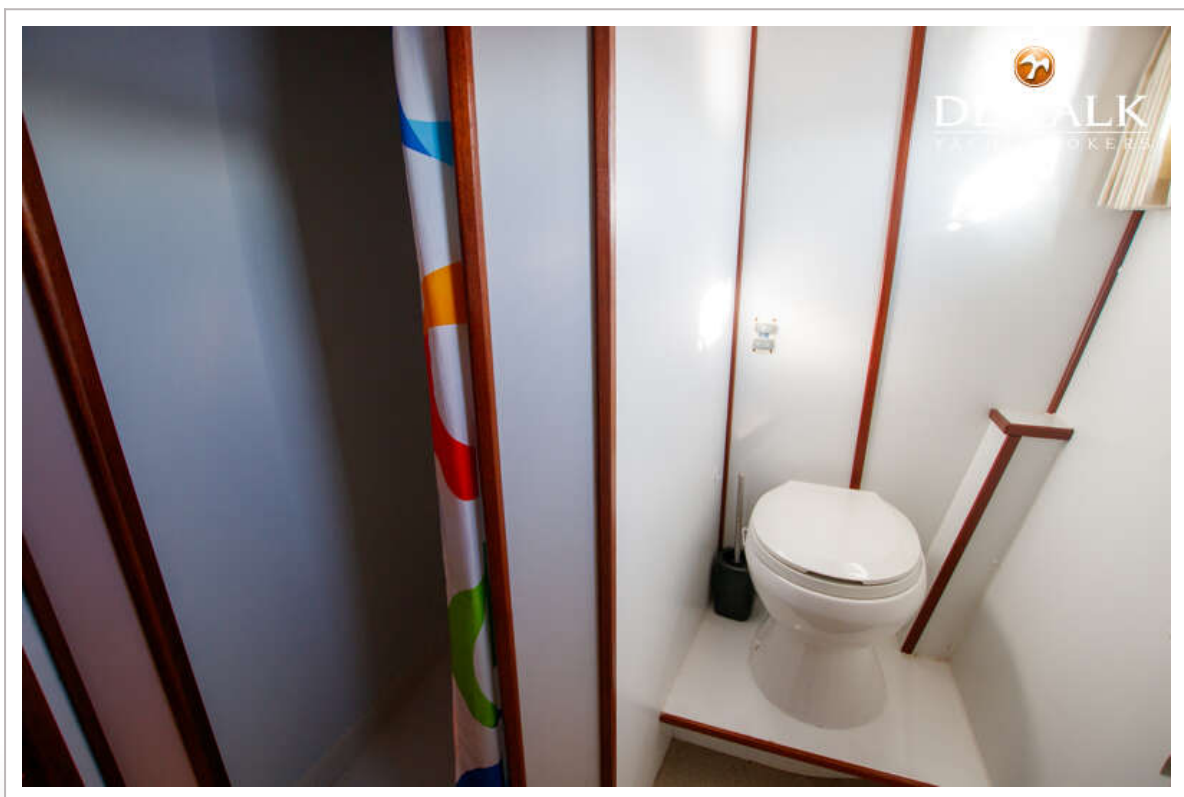
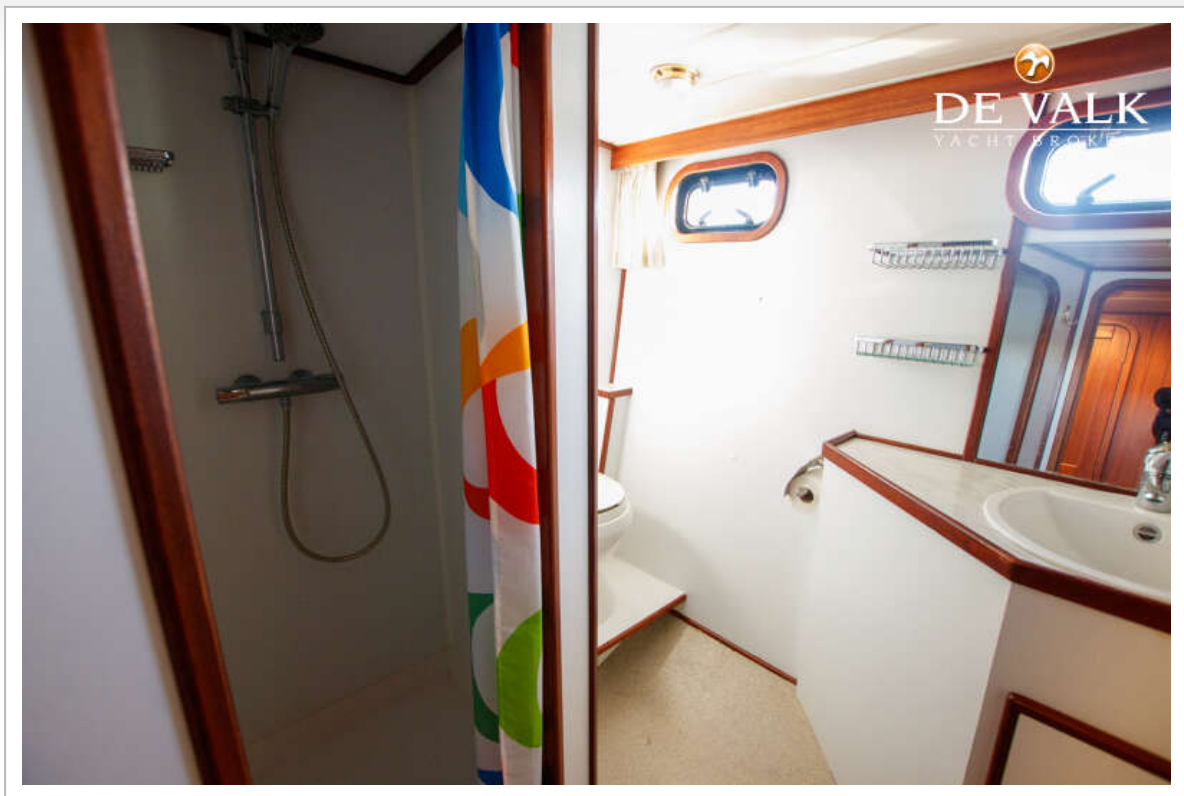
VALK VOYAGER 1750



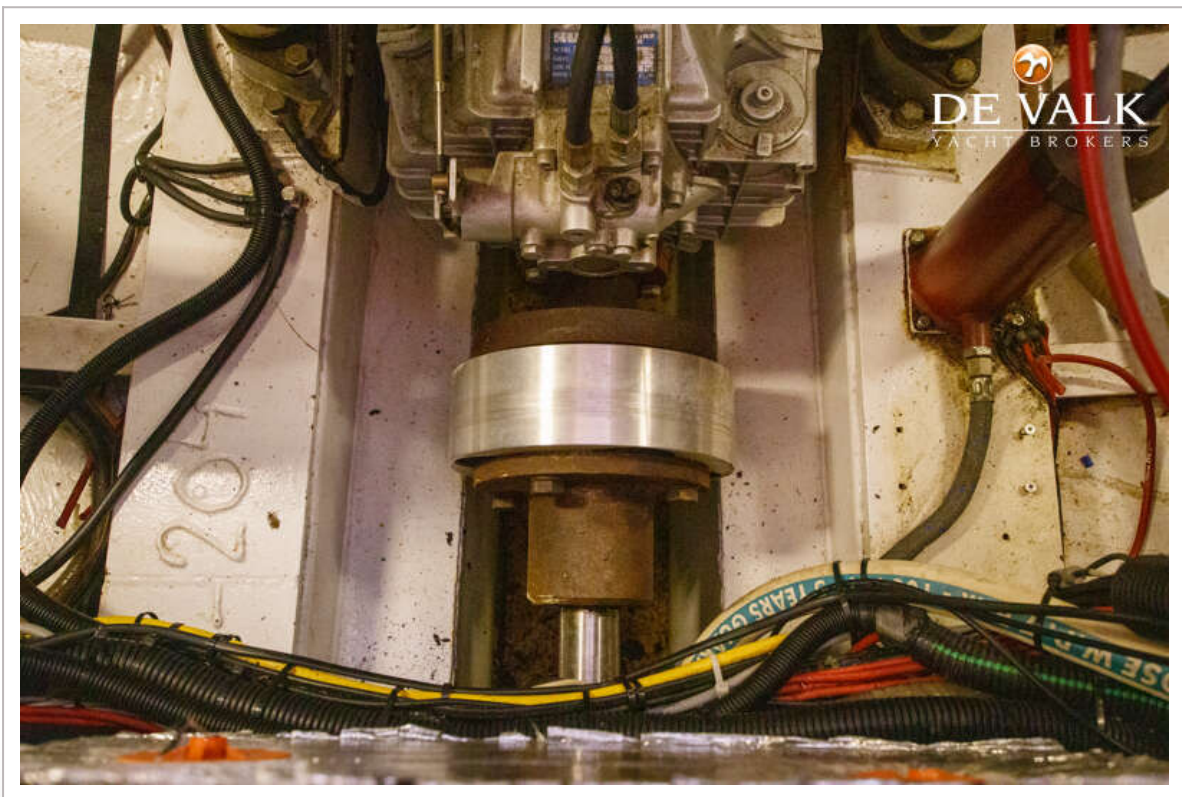
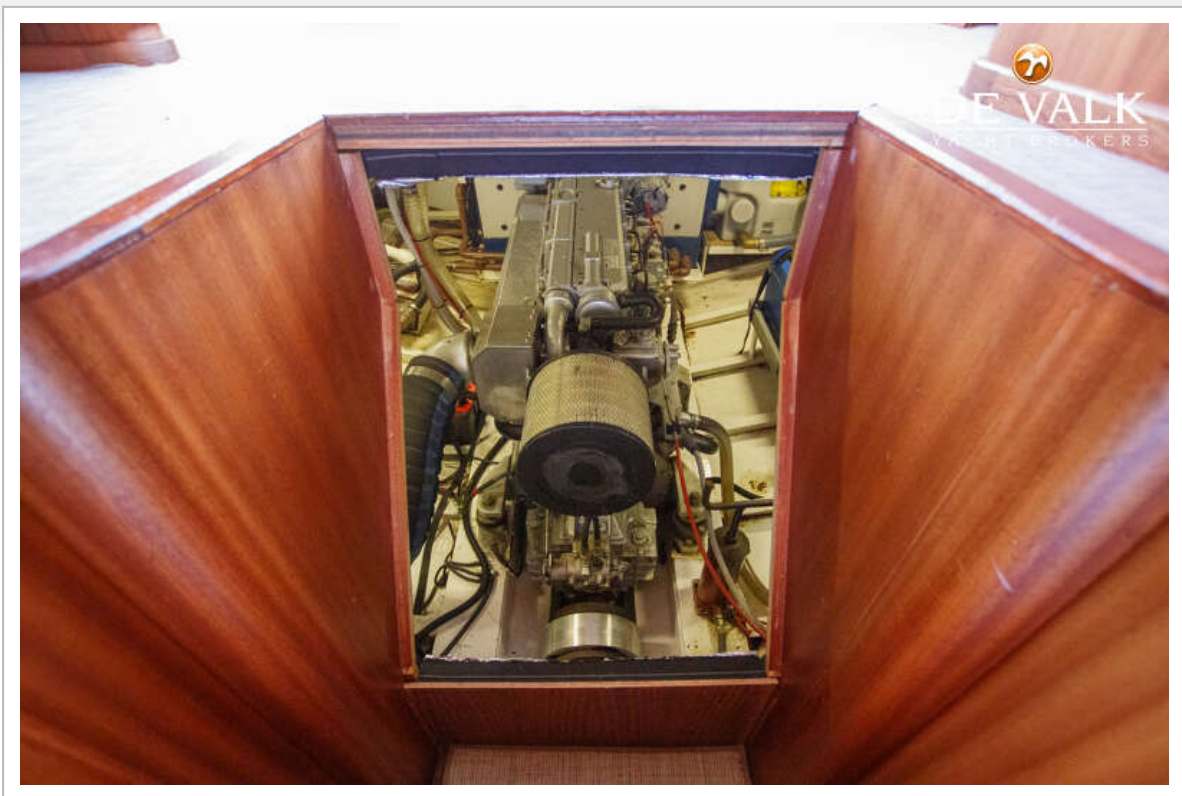
VALK VOYAGER 1750



VALK VOYAGER 1750



VALK VOYAGER 1750



VALK VOYAGER 1750



VALK VOYAGER 1750

