



DE VALK
YACHT BROKERS



CONTEST 55CS



DE VALK
YACHT BROKERS

BROKERAGE | CHARTER | BERTHS | FINANCE | INSURANCE | YACHT MANAGEMENT

BROKER'S COMMENTS

This Contest 55 CS performance Cruiser, built by the Dutch quality shipyard Contest, is ready for use by the new owner. This well-equipped yacht is fully equipped, including a spacious saloon, a well-equipped galley, an owner's cabin with ensuite bathroom and two guest cabins. In addition, the yacht is well rigged and equipped with a mast-in roll system, which ensures practical operation with great performance potential. This Contest 55 CS is ready for new adventures with the new owner. She can be viewed 24/7 at our location in Hindeloopen.

Henk Sijbranda

SPECIFICATIONS

Dimensions	16.75 x 4.65 x 1.95 (m)	Builder	Contest Yachts - Conyplex
Built	2004	Cabins	3
Material	GRP	Berths	6
Engine(s)	1 x Perkins diesel	Hp/Kw	135.00 (hp), 99.22 (kw)
Asking price	sold (VAT)	Lying	at sales office

CONTACT

Sales office	De Valk Hindeloopen B.V.	Telephone	+31 514 52 40 00
Address	Oosterstrand 1 8713 JS Hindeloopen NL	E-mail	hindeloopen@devalk.nl

DISCLAIMER

These particulars are given in good faith as supplied but cannot be guaranteed.



GENERAL

Model	CONTEST 55CS
Type	sailing yacht
LOA (m)	16,75
LWL (m)	13,55
Beam (m)	4,65
Draft (m)	1,95
Air draft (m)	25,90
Headroom (m)	2,03
Year built	2004
Builder	Contest Yachts - Conyplex
Country	The Netherlands
Designer	Doug Peterson & Georg Nissen
Displacement (t)	24,8
Ballast (tonnes)	8,87
CE norm	A
Hull material	GRP
Hull colour	blue
Hull shape	round-bilged
Keel type	wing keel
Superstructure material	GRP
Rubbing strake	Teak with stainless steel strip
Deck material	GRP
Deck finish	teak
Superstructure deck finish	teak
Cockpit deck finish	teak
Antifouling (year)	2020
Dorades	2x stainless steel
Window frame	aluminium
Window material	tempered glass
Deckhatch	6x Gebo



Portholes	12x
Fuel tank (litre)	stainless steel 850 ltr.
Level indicator (fuel tank)	yes
Freshwater tank (litre)	polyethylene 1050 ltr.
Level indicator (freshwater)	yes
Blackwater tank (litre)	polyethylene 2x 45 ltr.
Blackwater tank extraction	
Wheel steering	rack & pinion Leather repaired
Emergency tiller	yes

ACCOMMODATION

Cabins	3
Berths	6
Interior	teak
Floor	teak and holly
Saloon	yes
Headroom saloon (m)	2.03 mtr
Heating	Webasto 90ST heating system - burner serviced/replaced 2020
Air-conditioning	Two Cruisair units and one new (2020) Websto blueCool S10 unit
Navigation center	yes
Chart table	yes
Aft Cabin	Owners cabin
Galley	yes
Countertop	corian
Sink	stainless steel Double
Cooker	3 burner - Force10
Oven	In cooker
Microwave	Siemens
Fridge	1x front loader + freezer compartment 1x top loader both watercooled
Hot water system	



Water pressure system	electrical
Manual and/or foot pump	Foot pump
Owners cabin	French bed
Bed length (m)	2 mtr
Wardrobe	hanging/drawers/shelves
Bathroom	en suite
Toilet	Jabsco
Toilet system	electric
Wash basin	
Shower	
Extra info	Safe in master cabin
Guest cabin 1	double bed Front cabin
Bed length (m)	2.04 mtr
Wardrobe	hanging and shelves
Guest cabin 2	bunk bed
Bed length (m)	2 mtr
Wardrobe	hanging and shelves
Bathroom	shared
Toilet	New Jabsco (2020)
Toilet system	electric
Wash basin	
Shower	
Washing machine	Beko - new 2015
Extra info	sms switch for remote control of the Webasto heater.

MACHINERY

No of engines	1
Make	Perkins
HP	135
kW	99,22
Fuel	diesel



Maximum speed (kn)	8,5
Cruising speed (kn)	7,5
Engine hours	2022.5
Engine cooling system	freshwater heat exchanger
Drive	shaft
Engine controls	bowden cable
Gearbox	hydraulic
Bowthruster	electric Sleipner
Exhaust	watercooled
Propeller type	Maxprop + spare fixed prop under forward berth
Propeller blades	3
Propeller shaft material	stainless steel
Shaft lubrication	water
Manual bilge pump	yes
Electric bilge pump	yes
Electrical installation	12 / 24 / 220V
Generator	Fisher Panda 230V/50Hz - AC control box - type 8000NE
Start battery	Two batteries - 2018/2020
Service battery	Ten batteries - 2015
Battery monitor	Phoenix multi control
Battery charger	Victron Skylla-T6 24V 100Amp / Victron 7A charger for generator (2020)
Battery charger/inverter	Victron Multiplus 24/ 3000/ 70 (2021)
Shorepower	with cable

NAVIGATION

Compass	Suunto
Depth sounder	Data from 3x : Furuno FI-70 2018
Log	Data from 3x : Furuno FI-70 2018
Windset	Data from 3x : Furuno FI-70 2018
Repeater	1x Furuno FI-70 (Navigation table) 2018



VHF	2x Furuno (inside and outside) FM-2721 DSC
Autopilot	Furuno NAVpilot-711C - 2018
Radar	Furuno 1834C
GPS	Furuno GP-32 / Furuno GP-320b antenna
Radar/GPS/plotter	2x Furuno Navnet VX2 (inside 2018 and outside) + C-map NL 2019
Navtex	Furuno NX-300
AIS transponder	Furuno FA 150 AIS transponder (PG-1000) class A

EQUIPMENT

Fixed windscreen	yes
Sprayhood	New zippers and stitchings
Cockpit cover	yes
Cockpit table	Specially made teak (new 2020)
Bathing platform	yes
Boarding ladder	stainless steel
Gangway	Stainless steel with teak
Deck shower	yes
Anchor	Delta
Anchor chain	88 mtr. - 14mm
Windlass	electrical Lewmar V-4
Capstan	yes
Deck wash	yes
Outboard support	yes
Davits	stainless steel Simpson 125kg
Davits controls	manual
Sea railing	wire
Grab rail (superstructure)	stainless steel
Railing side opening gates	yes
Pushpit	yes
Pulpit	yes



Fenders	8x (new 2020)
Mooring lines	yes
TV	Smart tv LG (new 2020)
Radio-cd player	Kenwood (2020)
Speakers in salon	yes
Clock - barometer	2x

RIGGING

Rigging	sloop-cutter
Standing rigging	wire
Brand mast	Hallspars
Material mast	aluminium coated
Spreaders	3 pair
Mainsail	2020
Stoway mast	yes
Cutterstay	In 2020 cleaned, new UV strip and repaired
Genoa	2018
Genoa furler	Reckmann hydraulic
Cutter furler	Reckmann manual
Reefing System	main in-mast furling
Backstay adjuster	New (2020) Seldén Hydraulic Tensioners Integral (HTI)
Boomvang	mechanical
Primary sheet winch	2x Anderson 46ST two speed (main sail)
Secondary sheet winch	2x Anderson 46ST two speed electric
Genoa sheetwinches	2x Anderson 68ST two speed electric
Halyard winches	2x Anderson 52ST two speed on mast
Isolated backstay	New (2020) HI-MOD failsafe Backstay Rigging Insulators





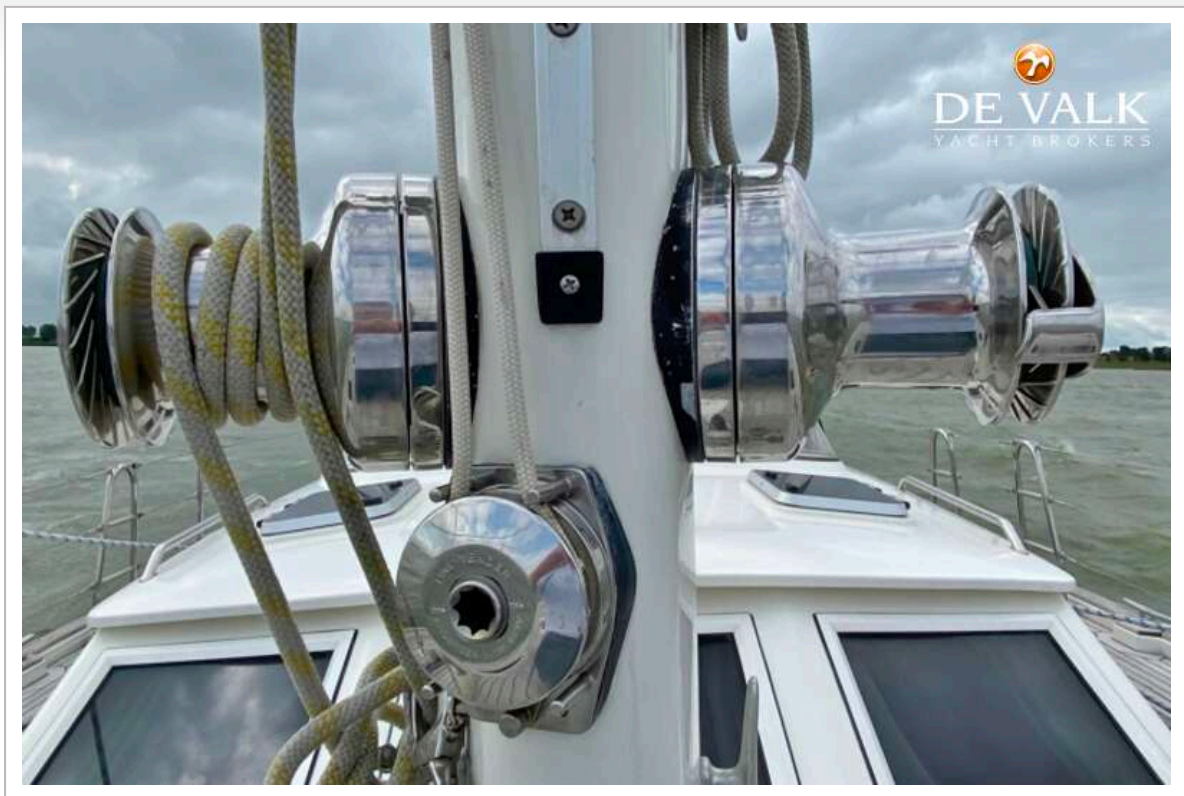


CONTEST 55CS



CONTEST 55CS







CONTEST 55CS



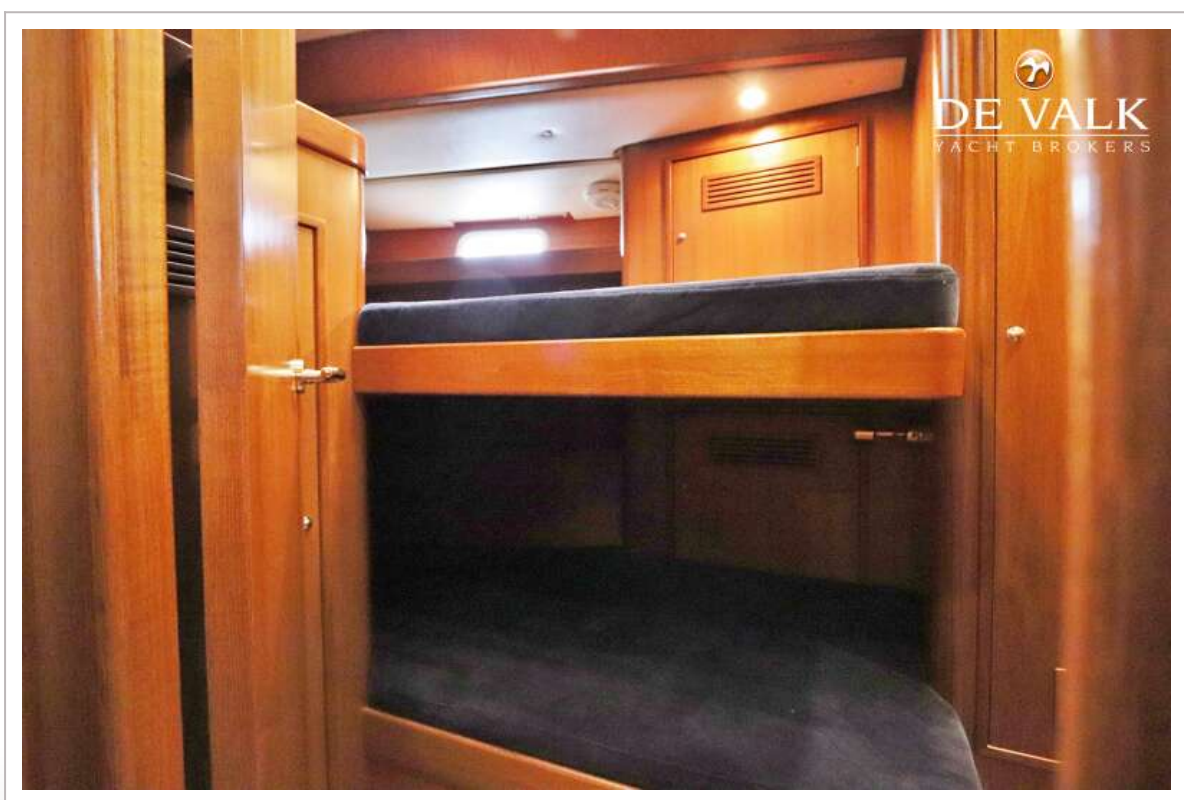
CONTEST 55CS



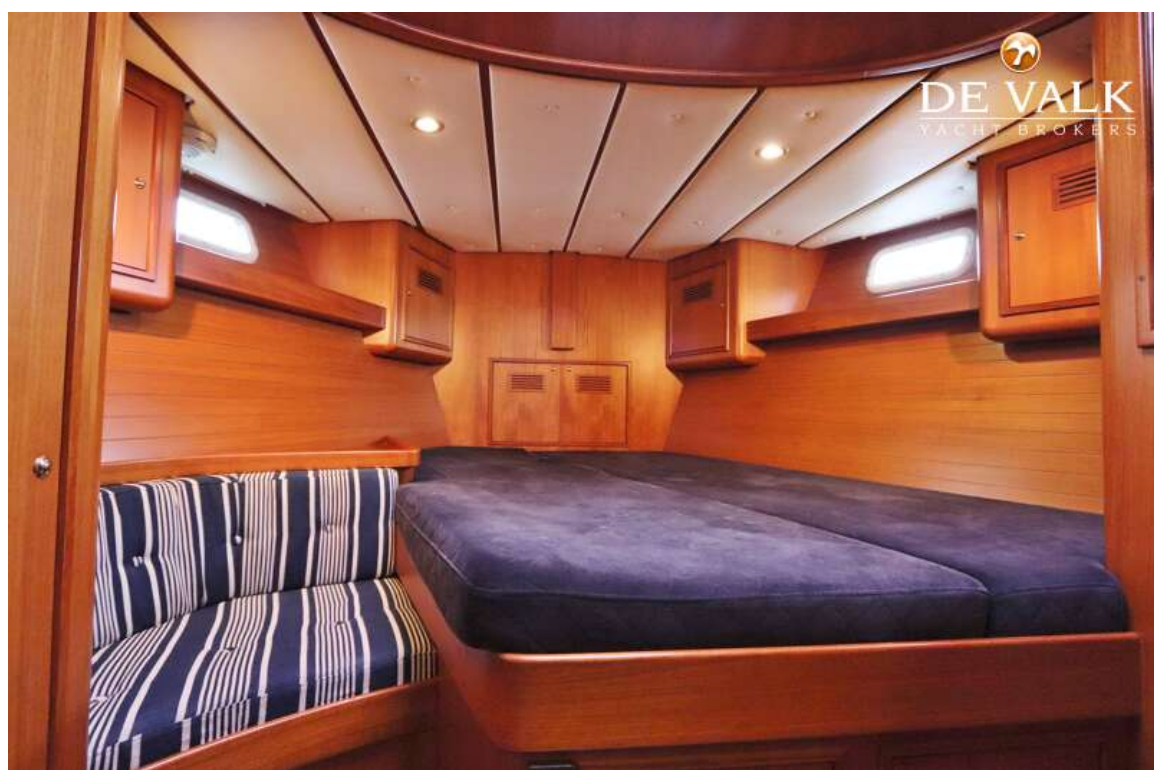
CONTEST 55CS



CONTEST 55CS



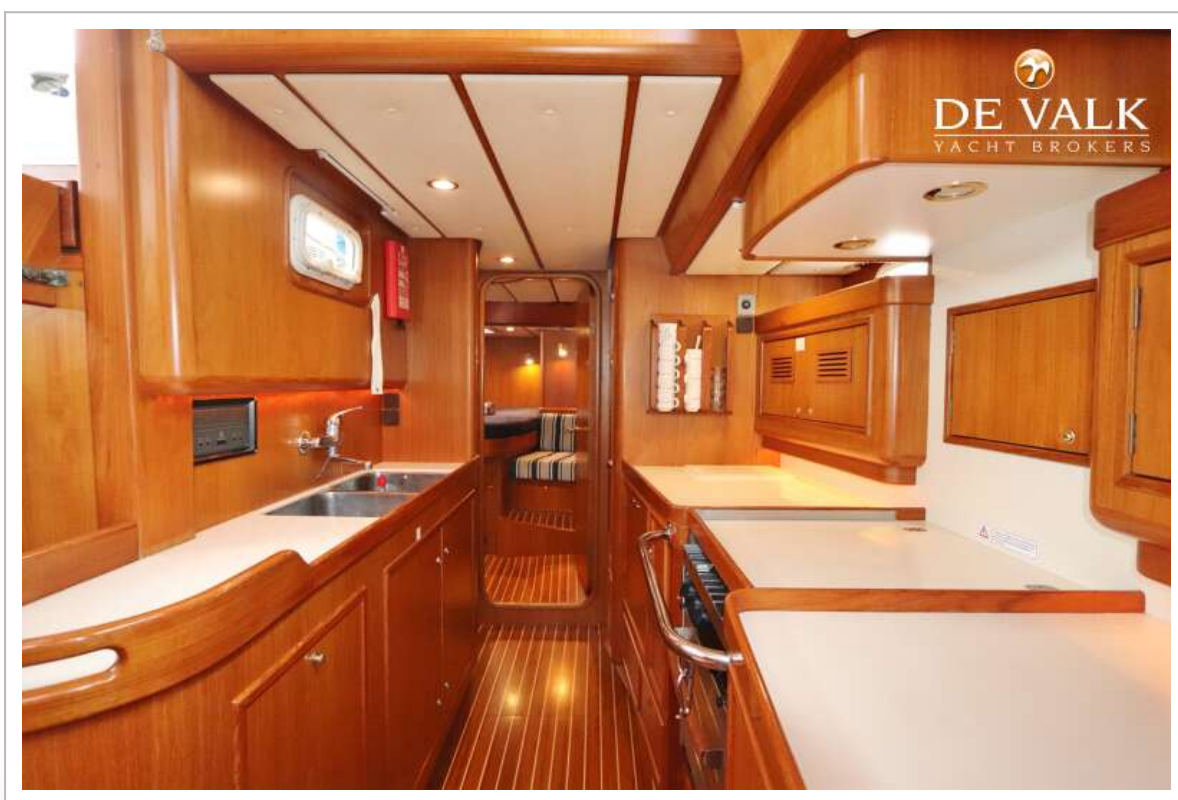
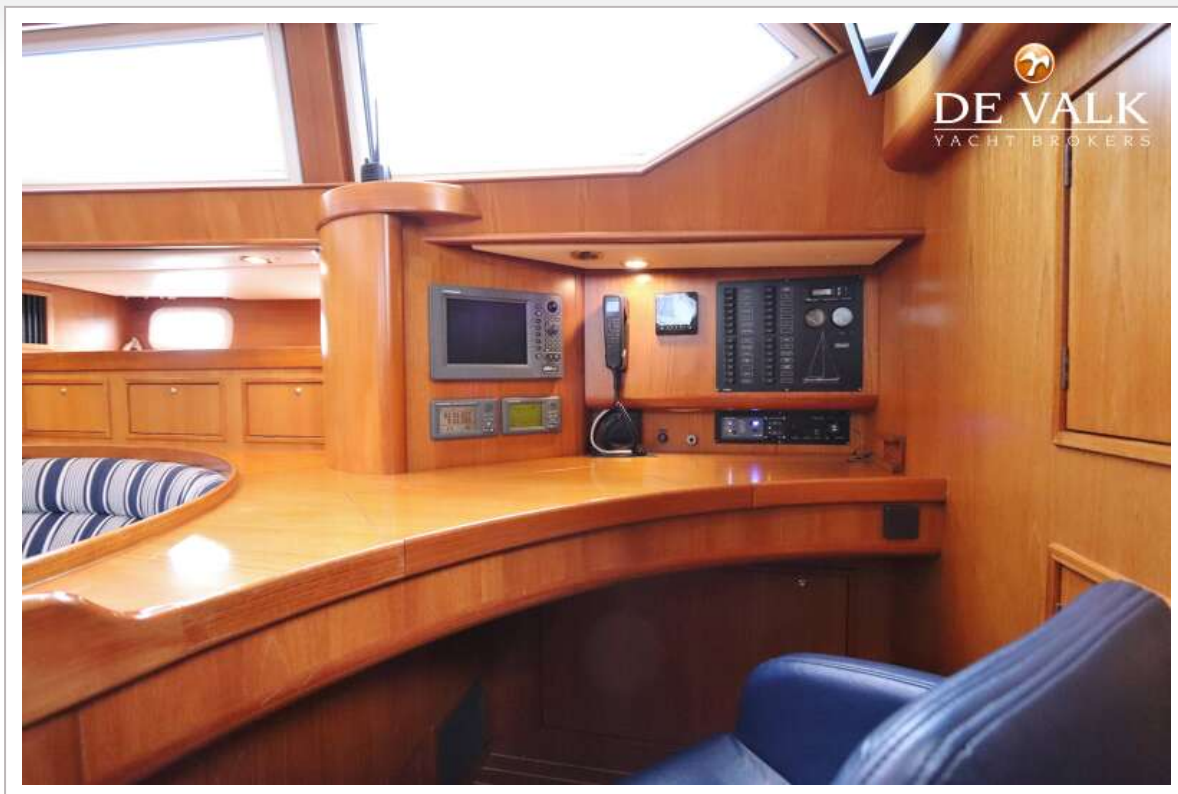
CONTEST 55CS



CONTEST 55CS



CONTEST 55CS



CONTEST 55CS



CONTEST 55CS



CONTEST 55CS

