



DE VALK
YACHT BROKERS



NEPTUNUS 54 EXPRESS HT



DE VALK
YACHT BROKERS

NEPTUNUS 54 EXPRESS HT

BROKER'S COMMENTS

This impressive looking hardtop cruiser was built by Neptunus in Canada to CE standards. With a long list of equipment and two powerful Caterpillar diesel engines she presents a good alternative to the European competition. Three very comfortable staterooms, two bathrooms, a fully equipped galley and an enclosed deck saloon make her also suitable for colder climates. Contact De Valk Zeeland and come and see for yourself if the Neptunus 54 Express HT might be your next boat.

Nick Lanting

SPECIFICATIONS

Dimensions	18.02 x 4.40 x 1.40 (m)	Builder	Neptunus Yachts
Built	1999	Cabins	3
Material	GRP	Berths	7
Engine(s)	2 x Caterpillar 3196 diesel	Hp/Kw	2 x 660.00 (hp), 485.00 (kw)
Asking price	sold (VAT)	Lying	at sales office

CONTACT

Sales office	De Valk Sint Annaland B.V.	Telephone	+31 166 601 000
Address	Koelhuisweg 4 4697 RM Sint Annaland NL	E-mail	sintannaland@devalk.nl

DISCLAIMER

These particulars are given in good faith as supplied but cannot be guaranteed.



NEPTUNUS 54 EXPRESS HT

GENERAL

Model	NEPTUNUS 54 EXPRESS HT
Type	motor yacht
LOA (m)	18,02
Beam (m)	4,40
Draft (m)	1,40
Headroom (m)	1,97
Year built	1999
Launched	2000
Builder	Neptunus Yachts
Country	Canada
Displacement (t)	20
CE norm	B
Hull material	GRP
Hull colour	brown
Hull shape	yes
Superstructure material	GRP
Rubbing strake	stainless steel
Deck material	GRP
Deck finish	non-skid moulded in
Superstructure deck finish	non-skid moulded in
Cockpit deck finish	teak
Antifouling (year)	2022
Window frame	stainless steel
Window material	tempered glass
Deckhatch	2 x
Portholes	stainless steel
Radar arch	non collapsible
Fuel tank (litre)	1135
Fuel tank 2 (litre)	1135
Level indicator (fuel tank)	Not indicating correctly



NEPTUNUS 54 EXPRESS HT

Freshwater tank (litre)	450
Level indicator (freshwater)	yes
Blackwater tank (litre)	yes
Level indicator (blackwater)	yes
Blackwater tank extraction	deck extraction + pump
Wheel steering	hydraulic
Inside helm position	yes
More info on hull	Hull sprayed early 2019 (Awlgrip)
More info on paintwork	Superstructure painted early 2019 (De IJssel)
Extra info	Hull length without platform 16.62 m

ACCOMMODATION

Cabins	3
Berths	7
Interior	cherry
Floor	carpet Teak/holly in decksaloon
Open cockpit	yes
Deck saloon	Headroom 2,04m
Saloon	yes
Headroom saloon (m)	1,98
Sliding roof	electric
Heating	Eberspächer Hydronic (not connected)
Air-conditioning	reverse cycle airco Clion chiller inverter unit (06/2022)
Sliding door to cockpit	Stainless steel
Galley	yes
Countertop	corian
Sink	stainless steel 2 x
Cooker	electric Bosch 4-burner
Microwave/oven combi	Whirlpool
Fridge	Bosch (09/2021), Isotherm (09/2021)
Hot water system	220V + engine



NEPTUNUS 54 EXPRESS HT

Water pressure system	electrical
Ice maker	Isotherm (09/2021)
Owners cabin	French bed Midships
Bed length (m)	2,00 x 1,50, new mattress 06/2022
Wardrobe	hanging/drawers/shelves
Bathroom	en suite
Toilet	en suite
Toilet system	electric
Wash basin	in the bathroom
Shower	separate
Extra info	Headroom 2,29m/1,48m, Hitachi TV/DVD 60 cm (09/2021)
Guest cabin 1	French bed Forward, new mattress 06/2022
Bed length (m)	1,95 x 1,45
Wardrobe	hanging/drawers/shelves
Bathroom	en suite
Toilet	en suite
Toilet system	electric
Wash basin	in the bathroom
Shower	separate
Extra info	Hitachi TV 55 cm (09/2021)
Guest cabin 2	Starboard, was fitted in 2022
Bed length (m)	1,85 x 1,40 + 1,85 x 0,65
Extra info	Salora TV/DVD 60 cm (09/2021)
Washing machine/dryer combi	yes
Wet bar	Sink, fridge (07/2021), griddle
Extra info	Electric side windows in deck saloon (not working)
Extra info	3rd cabin complete new fitted in 2022

MACHINERY

No of engines	2
Make	Caterpillar



NEPTUNUS 54 EXPRESS HT

Type	3196
HP	660
kW	485
Fuel	diesel
Maximum speed (kn)	30
Cruising speed (kn)	25
Engine hours	800
Engine cooling system	freshwater heat exchanger
Drive	shaft
Shaft seal	yes
Engine controls	electrical & bowden cable Mathers Micro Commander
Gearbox	hydraulic
Bowthruster	Vetus
Sternthruster	Sleipner SE170 (11/2022)
Exhaust	watercooled
Propeller type	fixed Checked and dynamically balanced 09/2021
Propeller blades	4
Propeller shaft material	stainless steel
Shaft lubrication	water
Electric bilge pump	yes
Bilge alarm	yes
Electrical installation	12 V (domestic), 24 V (start), 220 V
Generator	silent separator Fischer Panda PMG i8000 (2015)
Batteries	yes
Start battery	2 x 180 Ah (24 V)
Service battery	4x 220 Ah (12 V)
Generator battery	1 x (12 V)
Bowthruster battery	2 x (24 V)
Battery charger	Victron Centaur 12 V/80 A (09/2021)
Inverter	Mastervolt (for fridge)
Shorepower	with cable
Trimtabs	Bennett



NEPTUNUS 54 EXPRESS HT

NAVIGATION

Compass	yes
Electric compass	In autopilot
Depth sounder	Raymarine ST60 Depth
Log	Raymarine ST60 Speed
Windset	Raymarine ST60 Wind
VHF	ICOM IC-M506
Autopilot	Raytheon RayPilot 600 (not working) + Raymarine SmartController
Rudder angle indicator	In autopilot
Radar	Raymarine
GPS	Raymarine
Plotter	Raymarine E120
Navtex	Furuno NX300 Navtex
Camera	2 x, aft facing & engineroom
Navigation lights	yes
Searchlight	ITT Jabsco
Loudhailer	Raytheon Ray430 Loudhailer

EQUIPMENT

Fixed windscreen	yes
Fixed hardtop	yes
Winter cover	At previous owner
Cockpit cushions	08/2023, also sundeck cushions (09/2023)
Cockpit table	2 x
Bathing platform	Opacmare hi/lo
Boarding ladder	stainless steel
Transom door	yes
Deck shower	yes
Anchor	Delta Stainless steel
Anchor chain	Stainless steel



NEPTUNUS 54 EXPRESS HT

Anchor 2	Danforth
Windlass	Lewmar
Deck wash	yes
Sea railing	yes
Grab rail (superstructure)	stainless steel
Pulpit	yes
Wiper	2 x
Window heating	Through airco
Horn	electric
Fenders	yes
Mooring lines	yes
TV	Blaupunkt 101 cm in deck saloon
TracVision ball	Raymarine STV45 QUAD LNB (05/2022), not suitable for NL!
Radio-cd player	Pioneer
Sub-woofer	JL Audio
Cockpit speakers	2 x Kenwood coaxial
Speakers in salon	2 x Hertz composet
Speakers in cabin	2 x coaxial
Fire extinguisher	yes
Latest extinguisher survey	Unknown
Extinguisher in engine room	yes
Auto extinguisher system	Fireboy
Extra info	Underwater lights (function not sure) & mood lights to sidedecks



NEPTUNUS 54 EXPRESS HT



NEPTUNUS 54 EXPRESS HT



NEPTUNUS 54 EXPRESS HT



NEPTUNUS 54 EXPRESS HT



NEPTUNUS 54 EXPRESS HT



NEPTUNUS 54 EXPRESS HT



NEPTUNUS 54 EXPRESS HT



NEPTUNUS 54 EXPRESS HT



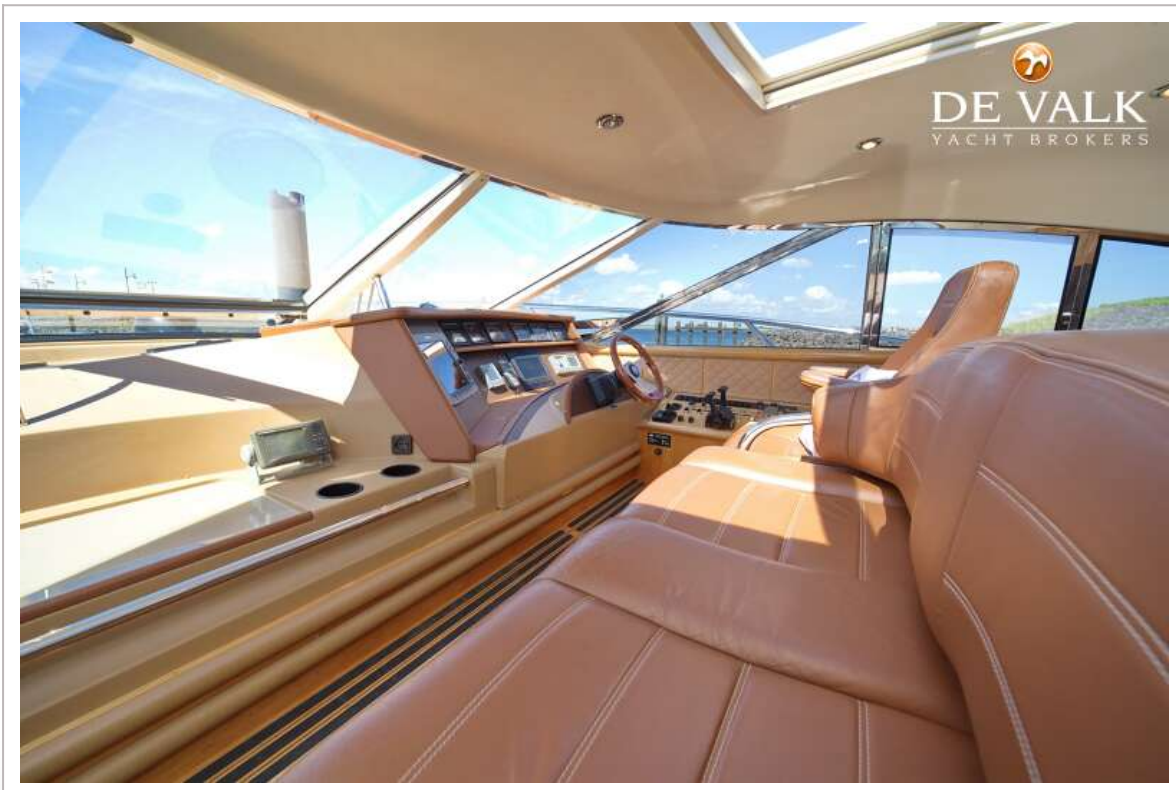
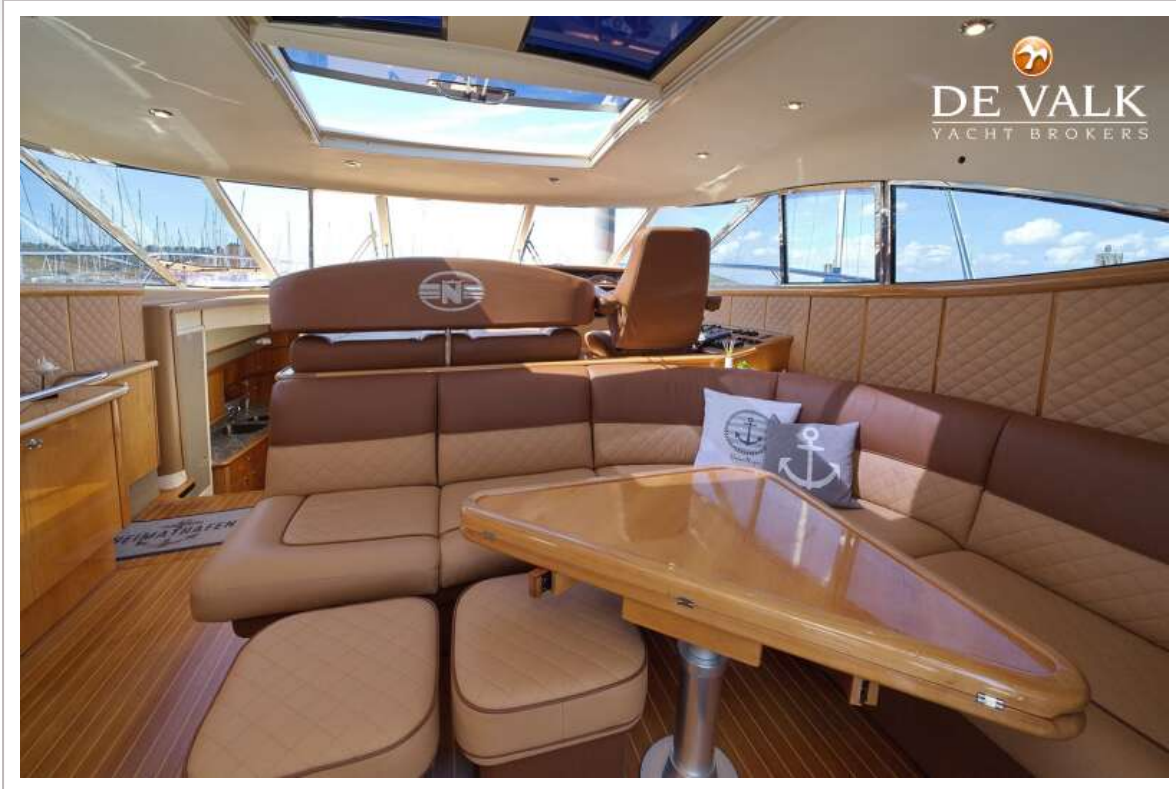
NEPTUNUS 54 EXPRESS HT



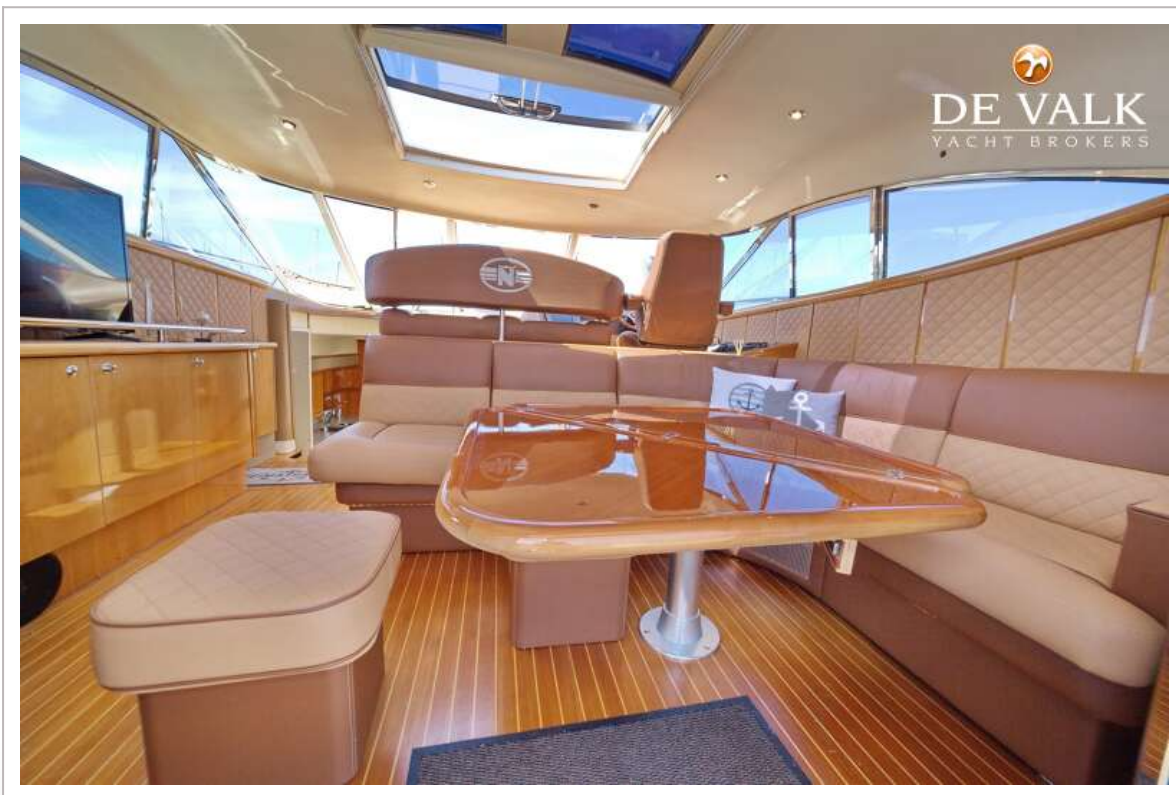
NEPTUNUS 54 EXPRESS HT



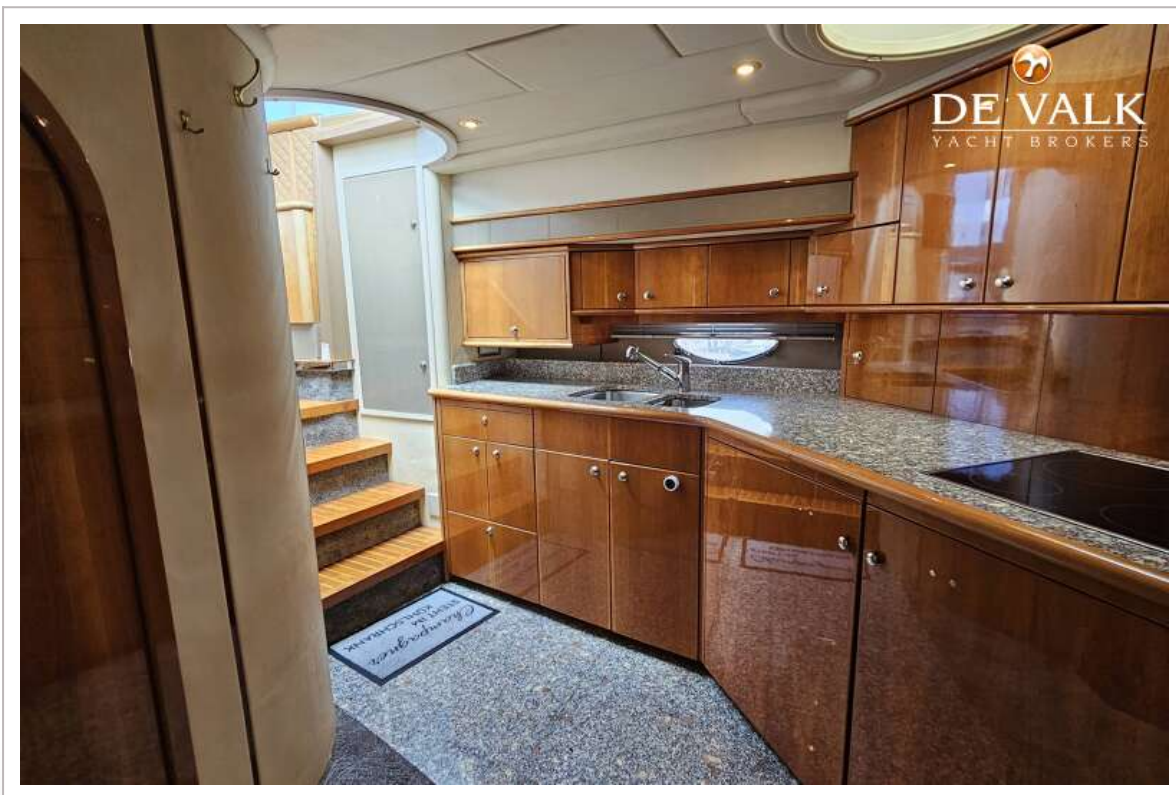
NEPTUNUS 54 EXPRESS HT



NEPTUNUS 54 EXPRESS HT



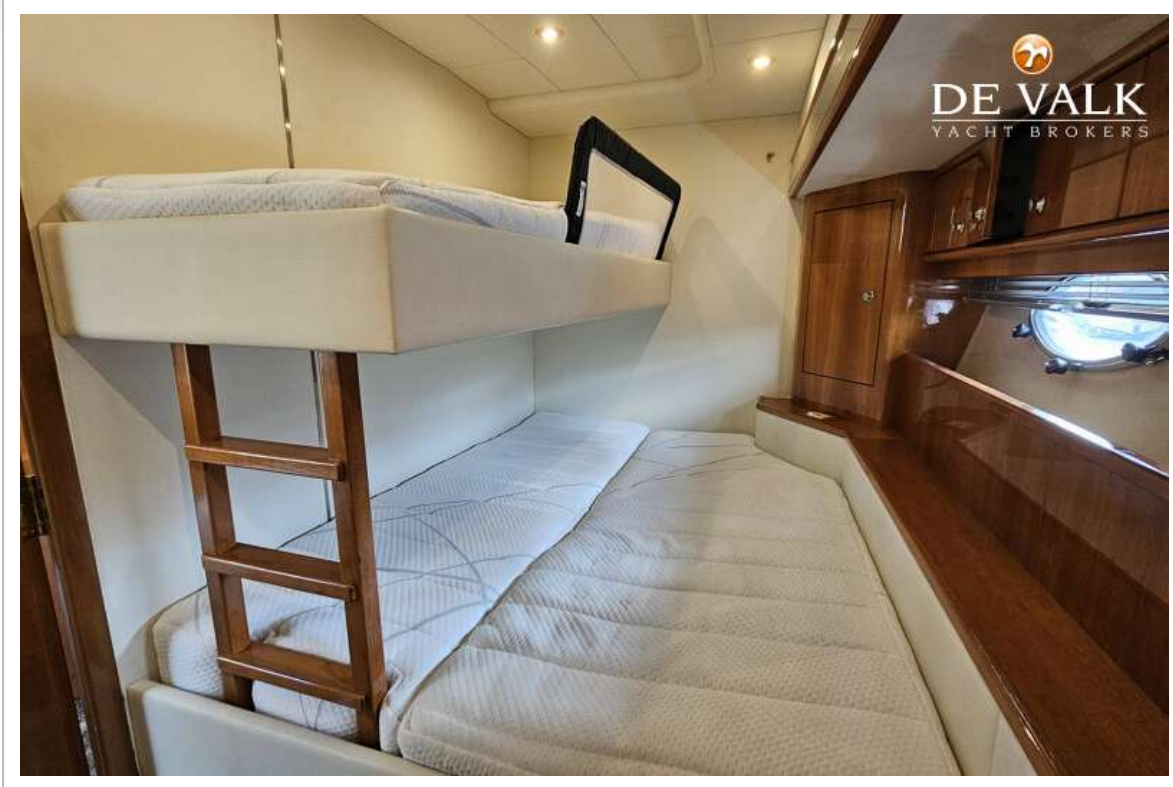
NEPTUNUS 54 EXPRESS HT



NEPTUNUS 54 EXPRESS HT



NEPTUNUS 54 EXPRESS HT



NEPTUNUS 54 EXPRESS HT



NEPTUNUS 54 EXPRESS HT



NEPTUNUS 54 EXPRESS HT



NEPTUNUS 54 EXPRESS HT

