



## PILOTHOUSE TRAWLER 60

# PILOTHOUSE TRAWLER 60

## BROKER'S COMMENTS

"The Pilothouse Trawler 60 "ASLAN" is now a very nicely converted vessel that used to be a customs boat in Germany. She is beautifully rebuilt by the SRF Shipyard in the Netherlands around 2010 to a sturdy pleasure boat with excellent steering options. Has a very professional engine, excellent current energy, navigation parts, etc. She is also CVO registered and therefore comes with a lot of safety equipment set up. The interior is very nice, excellent helm-seat, wonderful and cozy heating system and a beautiful owner's sleeping cabin and also a guest cabin".

*Ger Bayens*

## SPECIFICATIONS

<b>Dimensions</b>	18.26 x 4.40 x 1.80 (m)	<b>Builder</b>	Schweers Bardenfleth / SRF Friesland
<b>Built</b>	1955	<b>Cabins</b>	2
<b>Material</b>	Steel	<b>Berths</b>	8
<b>Engine(s)</b>	1 x Cummins NTA 14 M diesel	<b>Hp/Kw</b>	440.00 (hp), 323.84 (kw)
<b>Asking price</b>	€ 248.000 (VAT Paid)	<b>Lying</b>	elsewhere / Not at sales office

## CONTACT

<b>Sales office</b>	De Valk Thuishaven	<b>Telephone</b>	+31 35 5829042
<b>Address</b>	Peperstraat 7 1411 PX Naarden NL	<b>E-mail</b>	thuishaven@devalk.nl

## DISCLAIMER

These particulars are given in good faith as supplied but cannot be guaranteed.



# PILOTHOUSE TRAWLER 60

## GENERAL

Model	PILOTHOUSE TRAWLER 60
Type	motor yacht
LOA (m)	18,26
Beam (m)	4,40
Draft (m)	1,80
Headroom (m)	1,98
Year built	1955
Launched	originally built in 1955 as a customs vessel in Germany. But completely rebuilt in the Netherlands by SRF between 2009/2011. Relaunched in 2011
Builder	Schweers Bardenfleth / SRF Friesland
Country	Germany
Designer	German (ex customs trawler)
Displacement (t)	40
Hull material	steel
Hull colour	black And blue
Hull thickness (mm)	8/6 mm
Hull shape	round-bilged
Superstructure material	steel
Rubbing strake	rubber
Deck material	steel
Deck finish	paint
Superstructure deck finish	paint
Dorades	yes
Window frame	aluminium
Window material	glass 8mm
Portholes	brass 10x
Insulation	glasswool
Mast can be lowered	electric
Fuel tank (litre)	stainless steel 1500
Fuel tank 2 (litre)	stainless steel 1500



# PILOTHOUSE TRAWLER 60

Level indicator (fuel tank)	stand pipe
Freshwater tank (litre)	stainless steel 500
Blackwater tank (litre)	polyethylene 110
Level indicator (blackwater)	yes
Blackwater tank extraction	pump
Wheel steering	hydraulic
Emergency tiller	Hydraulic emergency steering system
More info on paintwork	The paint system on the deck needs attention.

## ACCOMMODATION

Cabins	2
Berths	8
Interior	mahogany
Layout	In the bow the owner's cabin, then a toilet and separate shower room, then downstairs the kitchen and the dinette. Above the pilotouse / saloon and at the back of the deck the guest cabin
Floor	wood
Aft deck	yes
Pilot house/deck saloon	yes
Headroom saloon (m)	1,98
Heating	stove wood
Heating 2	electric 220V
Navigation center	yes
Chart table	yes
Aft Cabin	yes
Dinette	yes
Dinette to convert into berth	(1,90 x 1,20mtr)
Convertible berth	yes
Opening door to aft deck	yes
Galley	yes
Countertop	plastic
Sink	stainless steel



# PILOTHOUSE TRAWLER 60

Cooker	calor gas 4 burner
Gas alarm	Co2
Fridge	with freezer compartment
Hot water system	220V + engine
Water pressure system	electrical
Coffee maker	yes
Owners cabin	French bed
Bed length (m)	2,00 x 1,60
Wardrobe	shelves
Bathroom	shared
Toilet	shared
Toilet system	electric
Wash basin	in the bathroom
Guest cabin 1	double bed + single bed
Bed length (m)	no mattresses 2,00 x 1,40 / 2,00 x 0.70
Bathroom	shared
Toilet	shared
Toilet system	electric
Wash basin	in the bathroom

## MACHINERY

No of engines	1
Make	Cummins
Type	NTA 14 M
HP	440
kW	323.84
Fuel	diesel
Year installed	2010
Year of overhaul	The engine is from 2001, used in a professional ship for the first 8 years, with approximately 6200 operating hours. Then placed in the converted current ship around 2009/2010 after that it has sailed approximately 800 hours so far. 2010



# PILOTHOUSE TRAWLER 60

Maximum speed (kn)	10,25
Cruising speed (kn)	7,5
Consumption (l/hr)	14
Engine hours	7016
Engine cooling system	freshwater heat exchanger
Drive	shaft
Engine controls	bowden cable
Gearbox	hydraulic Eisenwerke Rijntjes WAL 400 (1978)
Bowthruster	electric Max Power 12 Pk
Exhaust	dry
Propeller type	reversible
Propeller blades	adjustable 3
Propeller shaft material	steel
Shaft lubrication	oilbath
Electric bilge pump	yes
Bilge alarm	yes
Electrical installation	12/24V 220/380V
Generator	Perkins 17 Kw
Batteries	14
Start battery	4x
Service battery	4x 230 Ah (2022)
Generator battery	2x
Bowthruster battery	2x (2023)
Windlass battery	2x (2023)
Battery monitor	yes
Battery charger	1x Mastervolt 30 Ah (2023), Victron Skylla TG 24/50
Battery charger/inverter	Victron Multiplus 24/3000/70
Solar panel	2x
Diode battery combiners	yes
Shorepower	with cable 220/380V



# PILOTHOUSE TRAWLER 60

## NAVIGATION

Electric compass	VDO
Depth sounder	VDO
VHF	2x Sailor 6215 DSC
Autopilot	With Delta 600,a special steering wheel control Van de Velden / EPP 550
Rudder angle indicator	VDO
Radar	color radar Samyung SMR 3000
Plotter/GPS	Simrad IS42
AIS transceiver	EM-Track A100
Camera	front and back
Navigation lights	yes
Searchlight	2x

## EQUIPMENT

Boarding ladder	aluminum
Anchor	Pool
Anchor chain	60 mtr.
Windlass	electrical Lofrans Mod. Titan 2000W / 24V
Capstan	yes
Deck wash	yes
Deck crane	electric
Sea railing	tube
Lifebuoy	2x
Wiper	3x
Horn	air pressure (2023)
Fenders	yes
Mooring lines	yes
Alarm system	yes
Radio-cd player	Denon RCD-M40DAP
Surround Sound System	yes



# PILOTHOUSE TRAWLER 60

Speakers in salon	yes
Speakers in cabin	yes
Clock - barometer	yes
Fire extinguisher	yes
Extra info	spud pole in the bow 2,9 mtr.

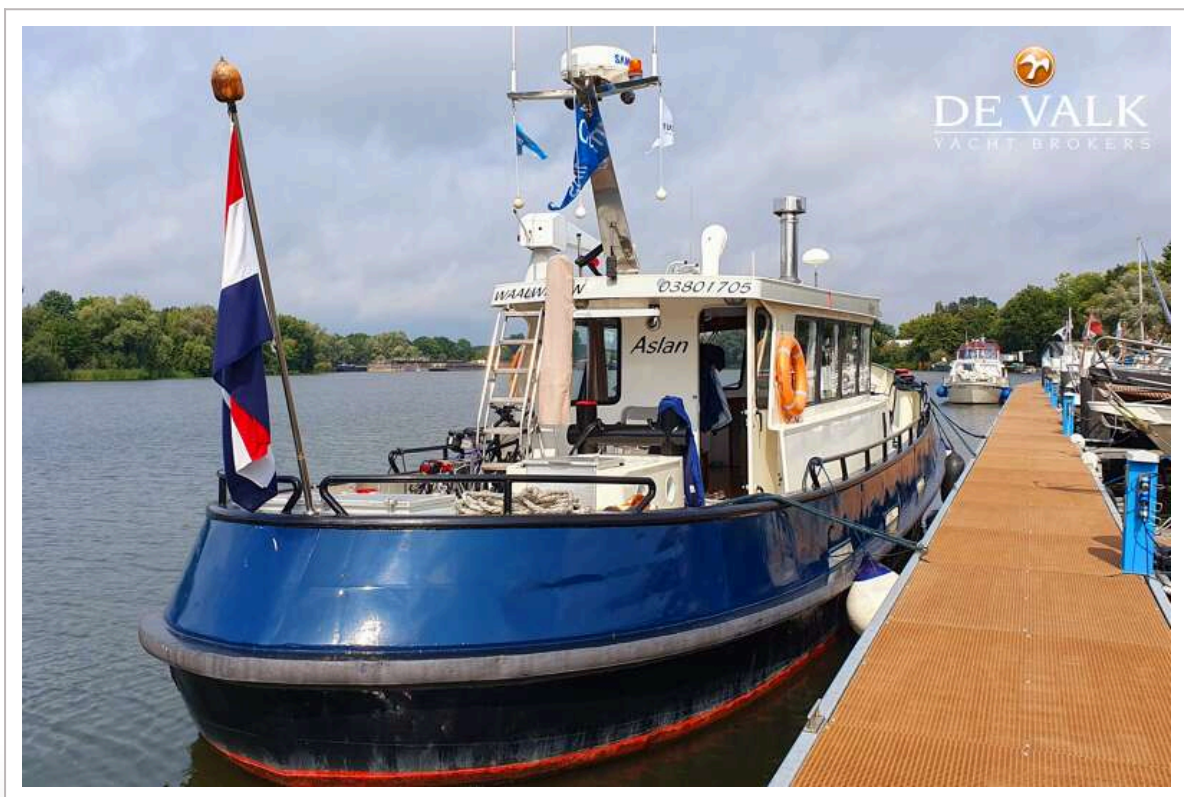




# PILOTHOUSE TRAWLER 60

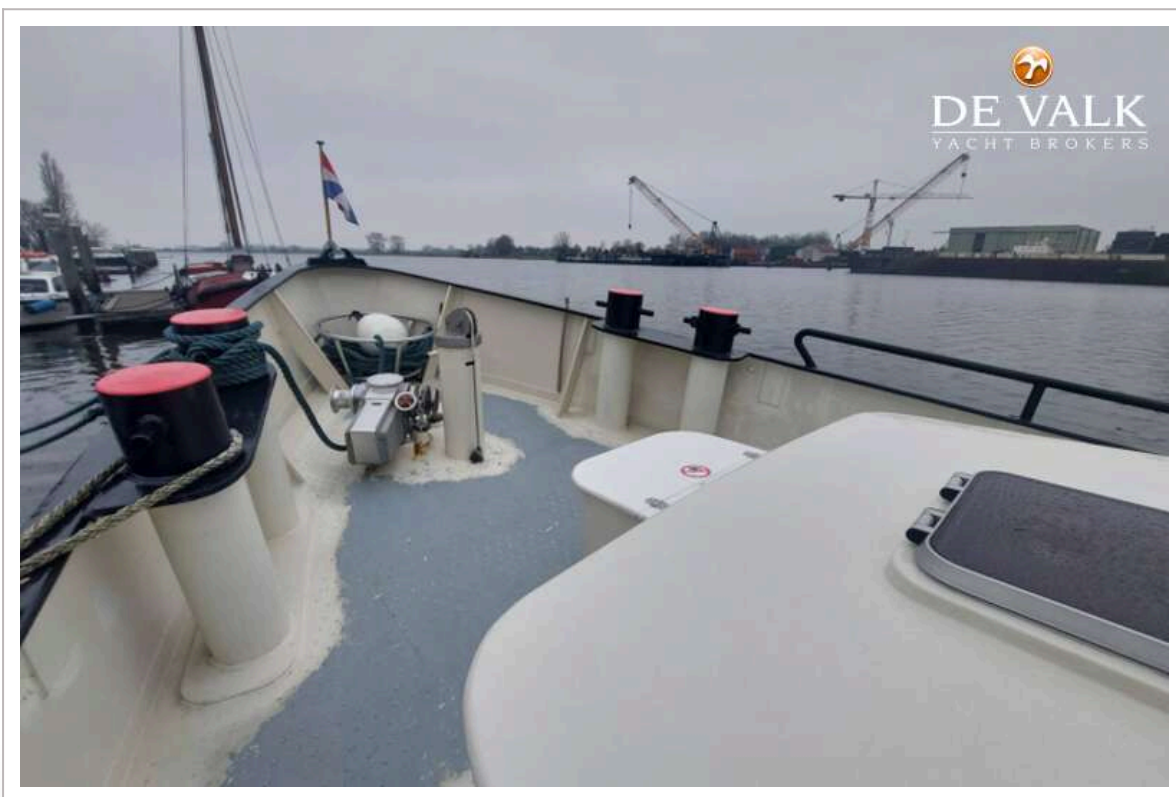


# PILOTHOUSE TRAWLER 60





# PILOTHOUSE TRAWLER 60

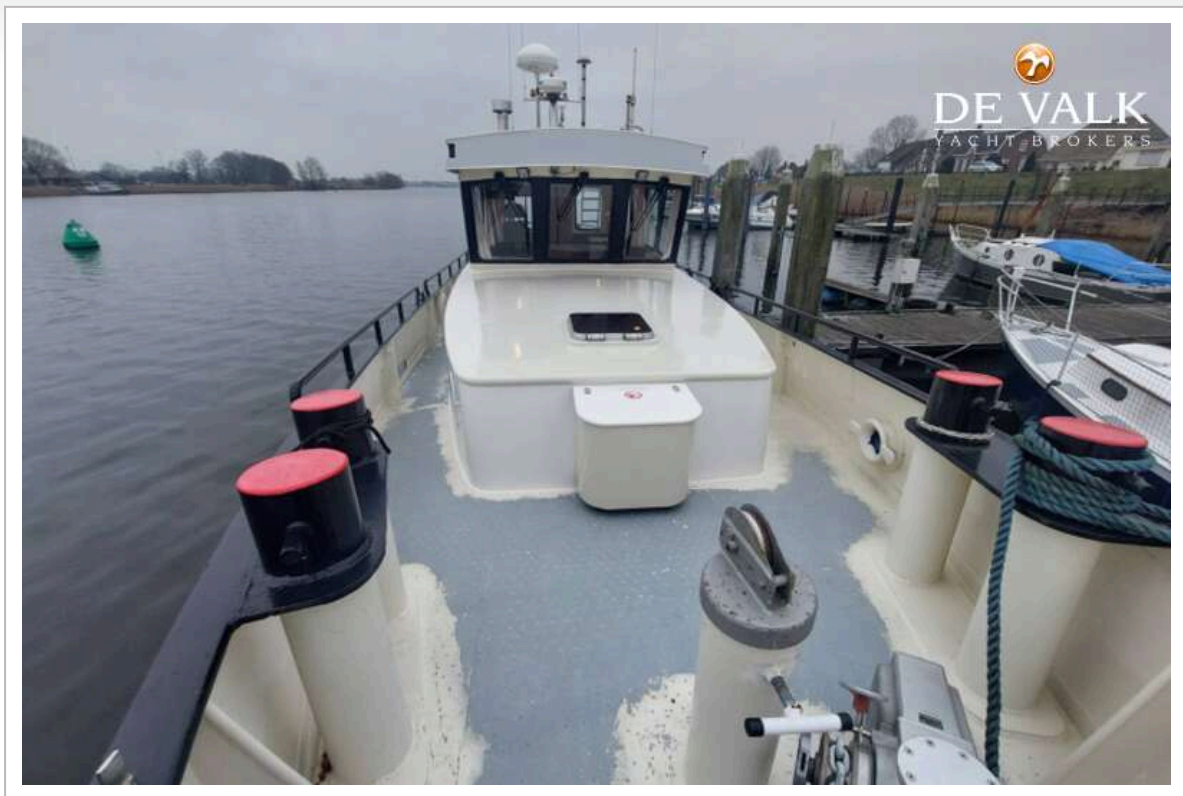


# PILOTHOUSE TRAWLER 60

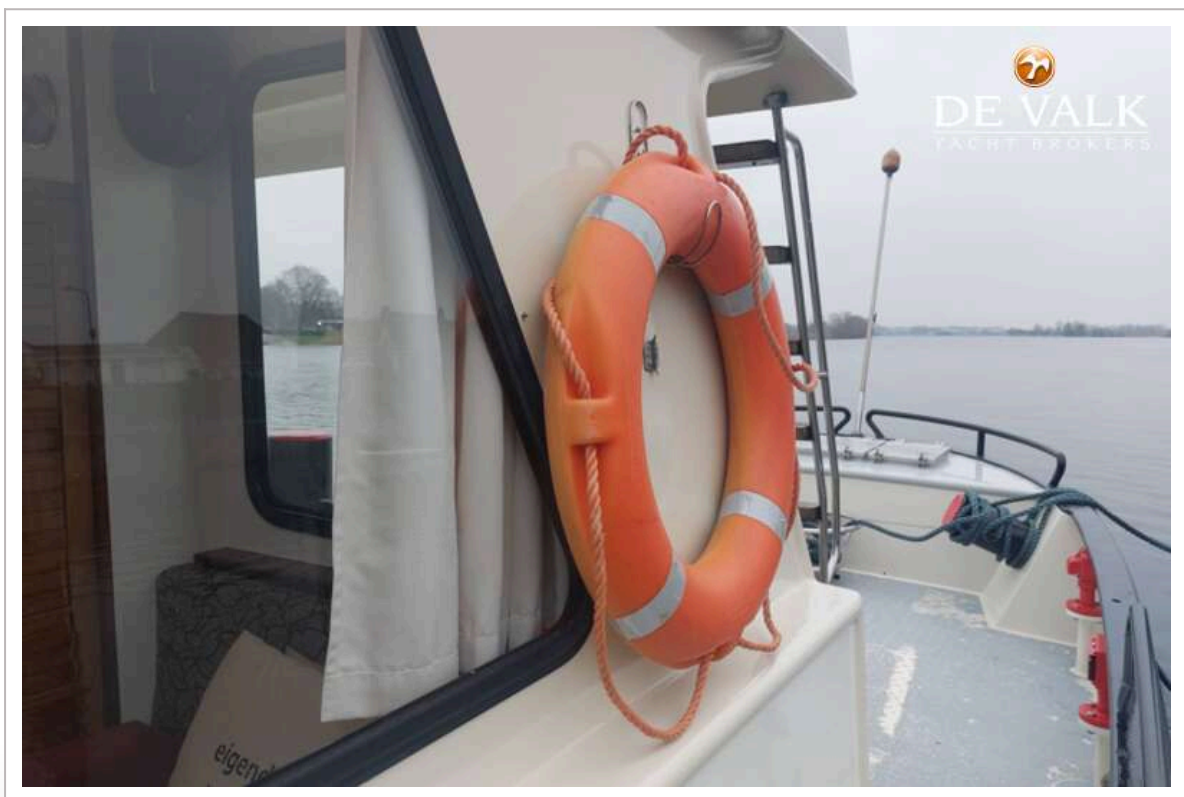




## PILOTHOUSE TRAWLER 60



# PILOTHOUSE TRAWLER 60

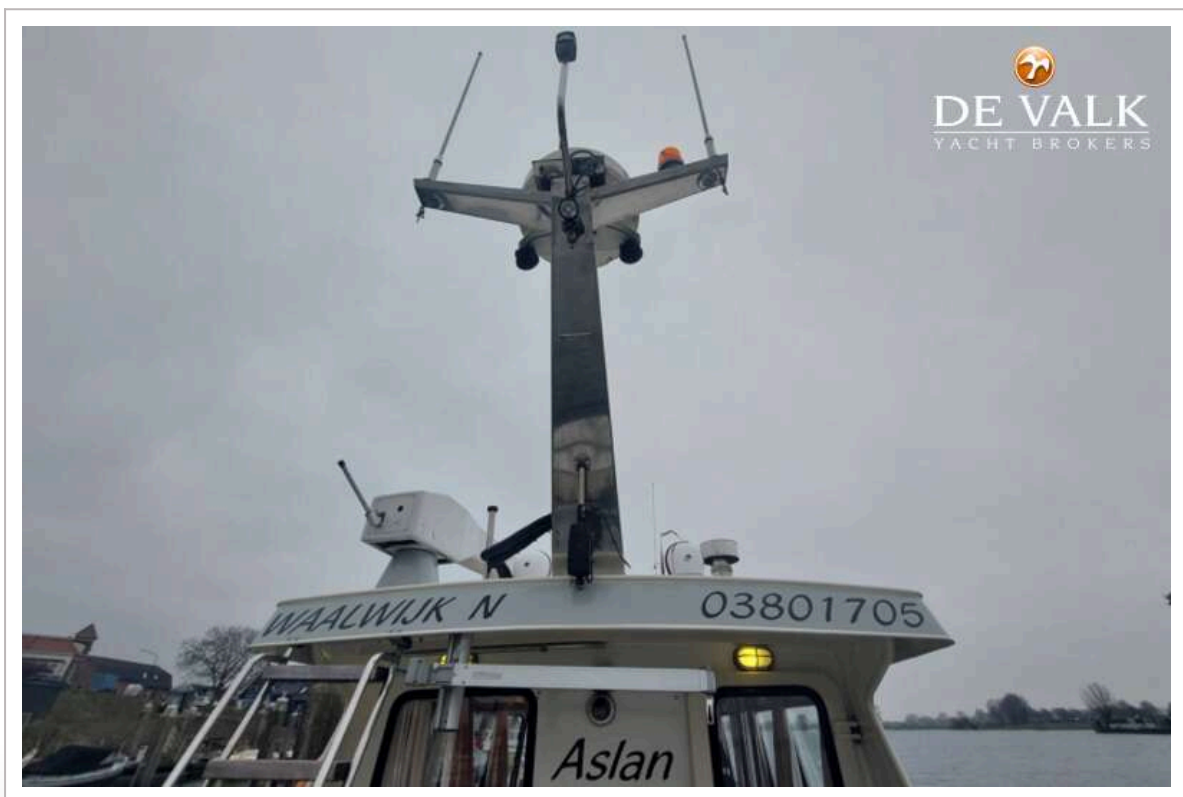


## PILOTHOUSE TRAWLER 60





## PILOTHOUSE TRAWLER 60

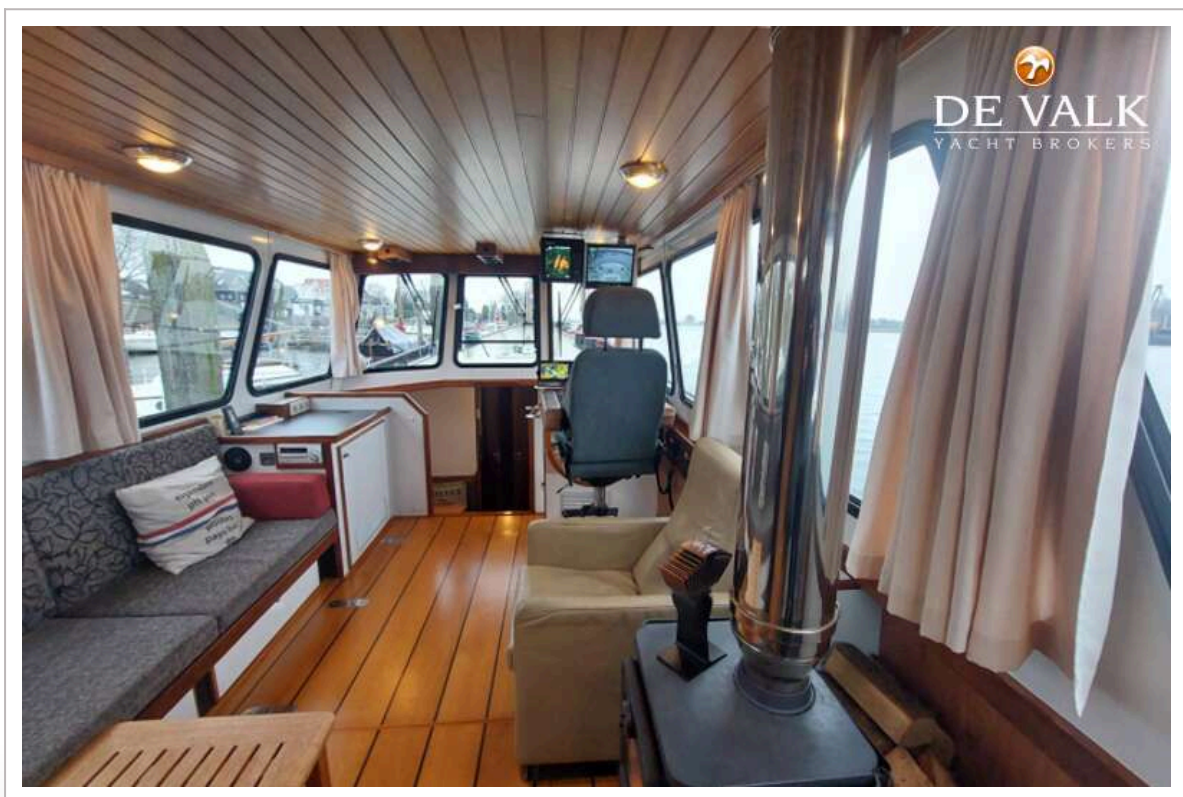




# PILOTHOUSE TRAWLER 60



## PILOTHOUSE TRAWLER 60

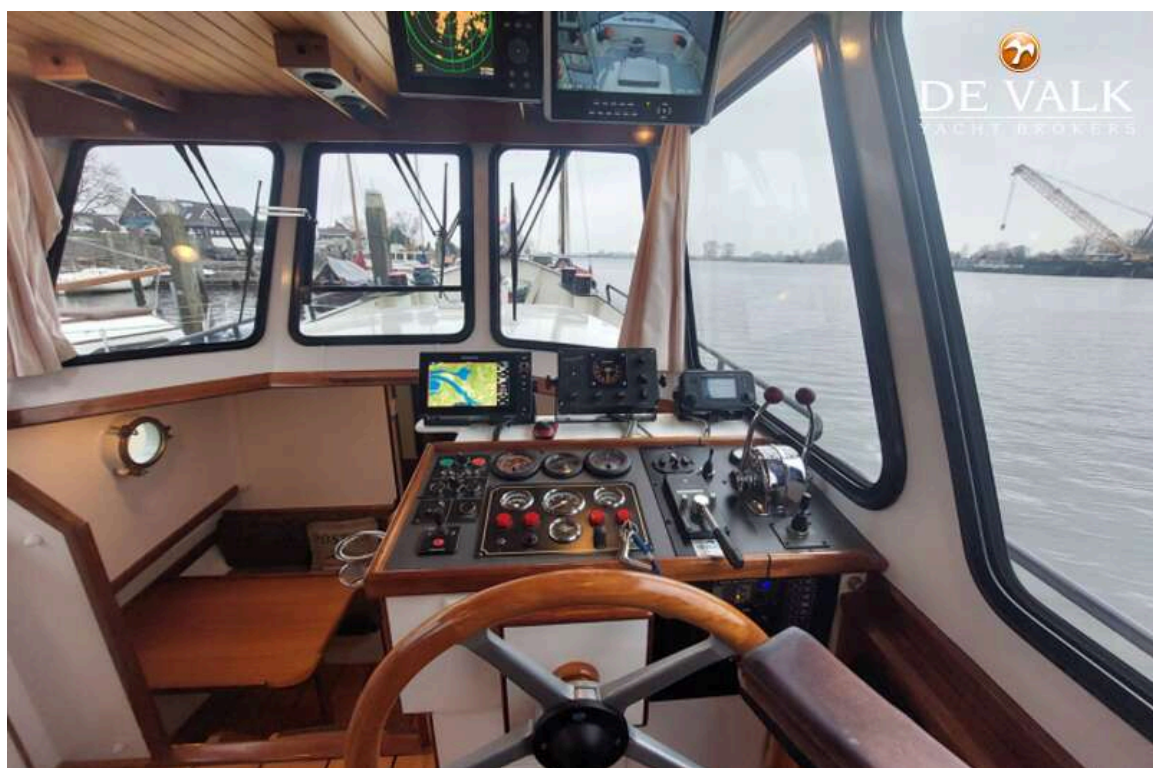




## PILOTHOUSE TRAWLER 60

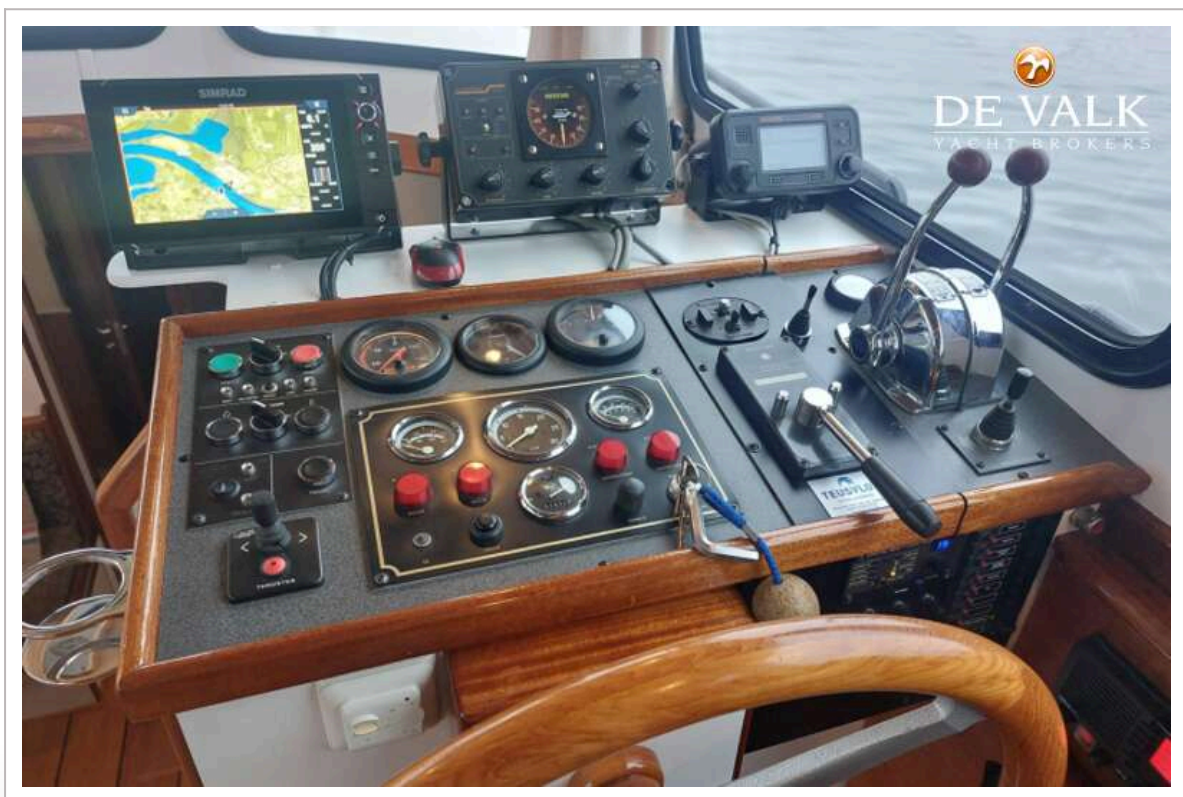


## PILOTHOUSE TRAWLER 60





# PILOTHOUSE TRAWLER 60

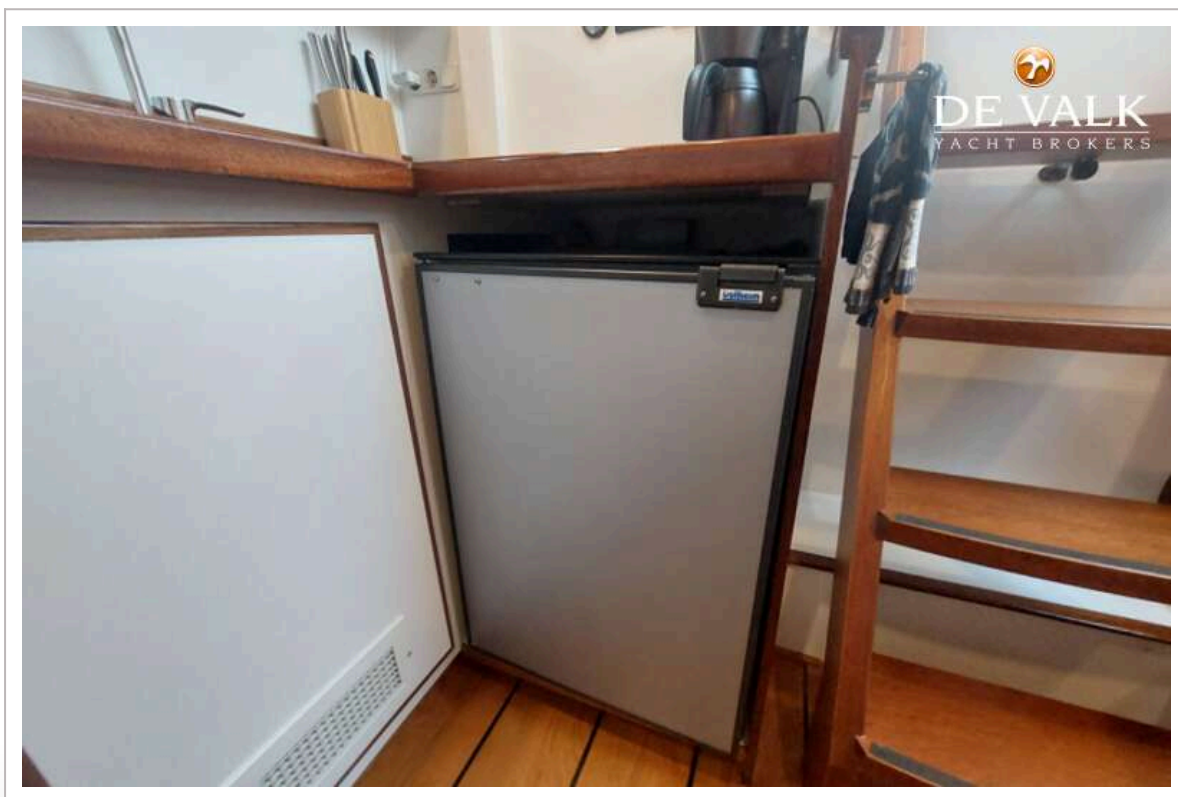


# PILOTHOUSE TRAWLER 60

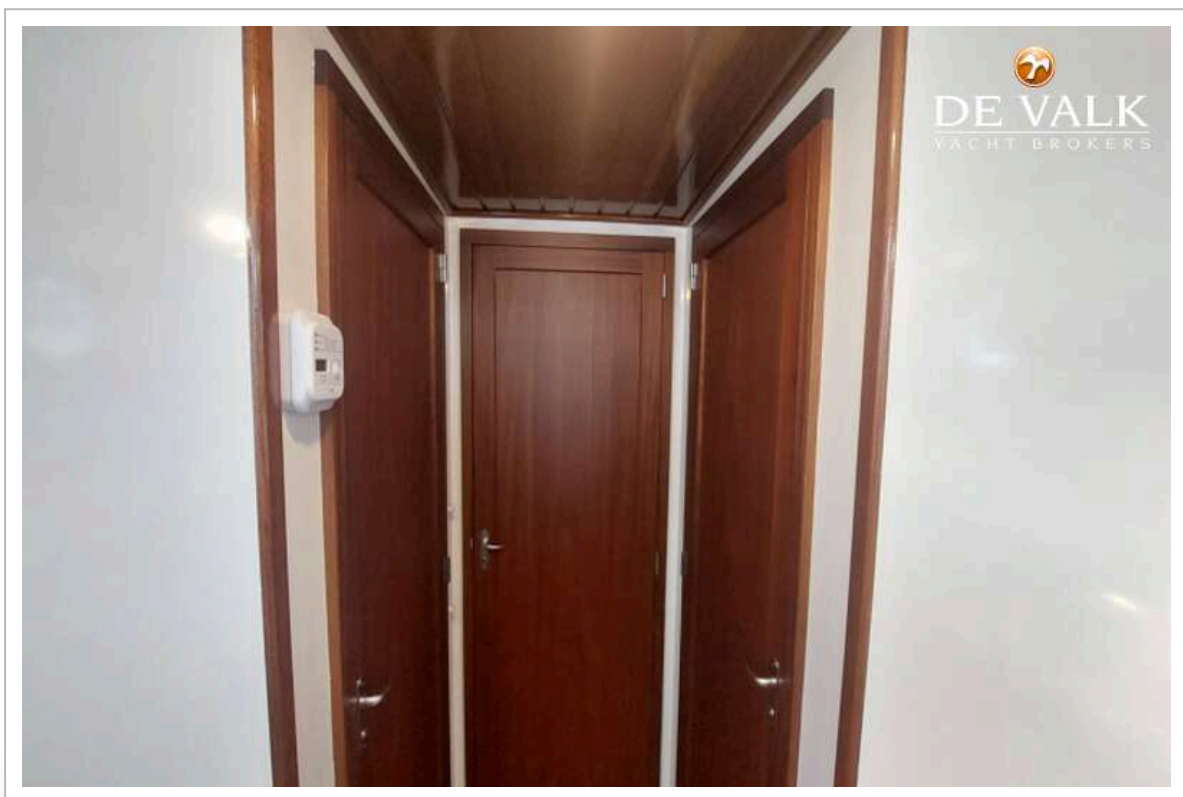




## PILOTHOUSE TRAWLER 60

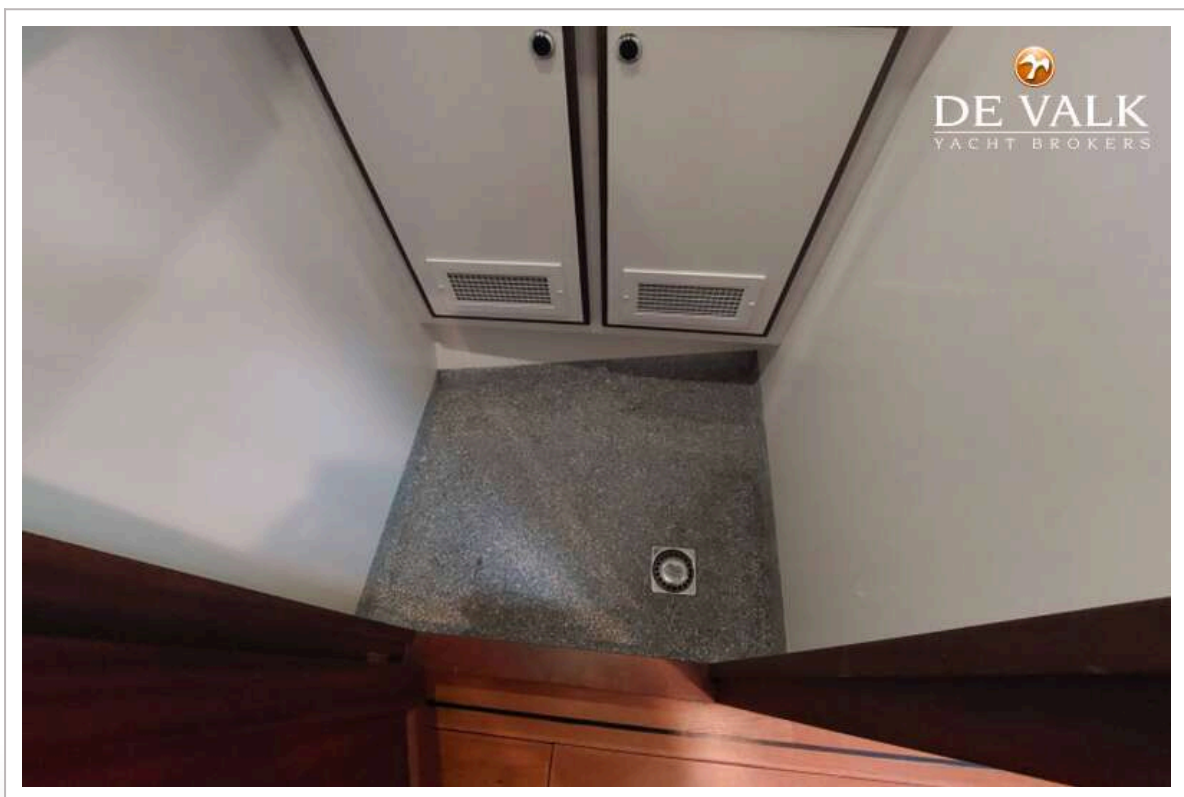
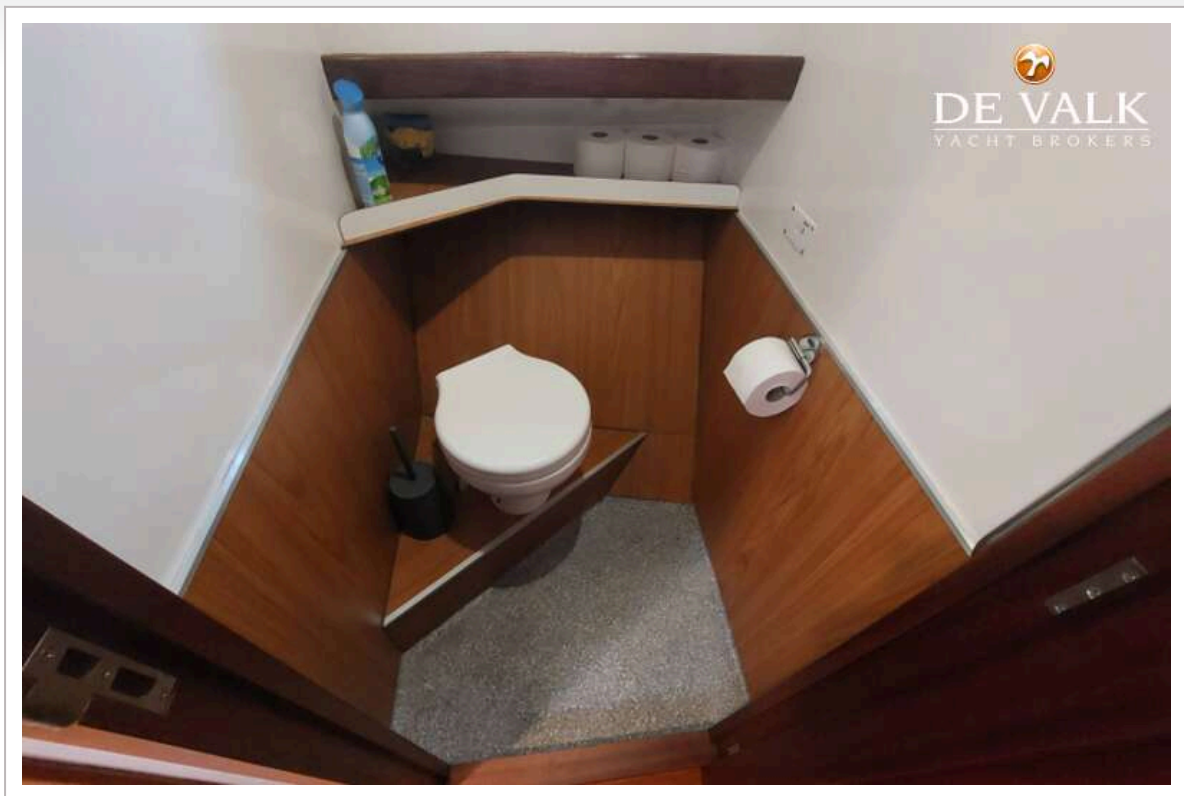


## PILOTHOUSE TRAWLER 60

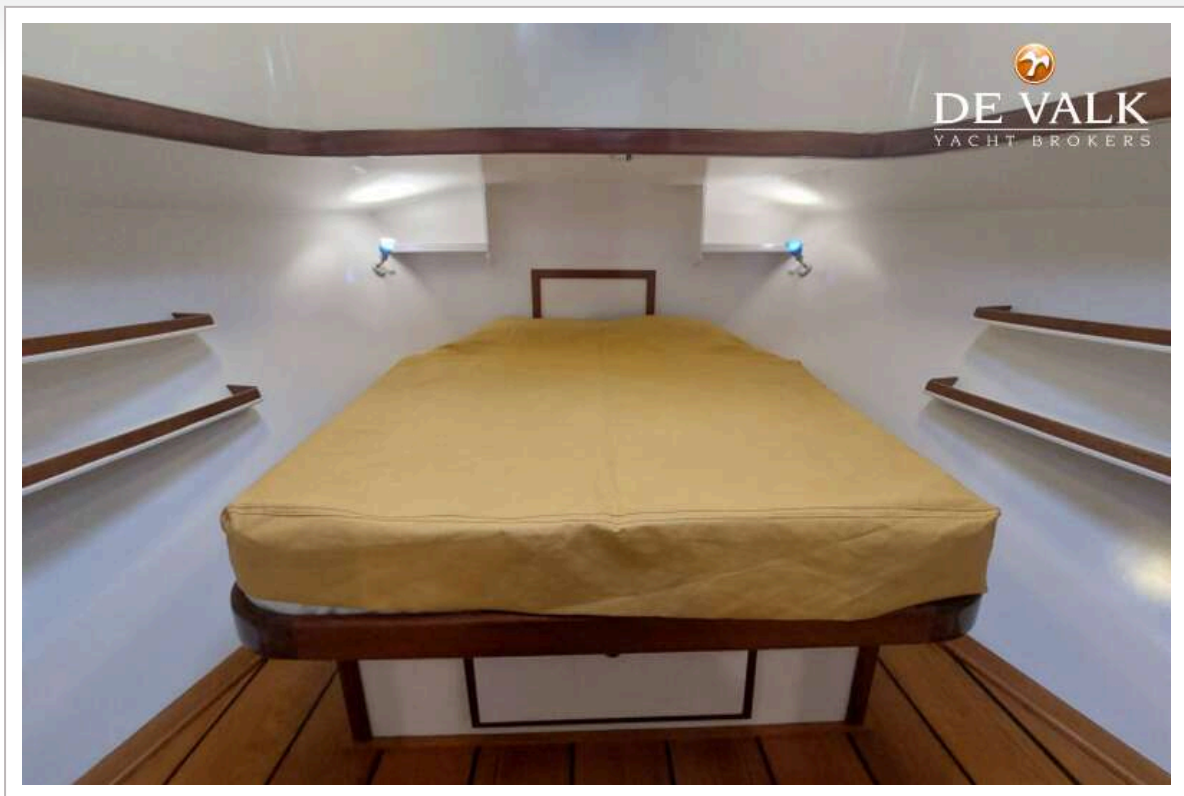




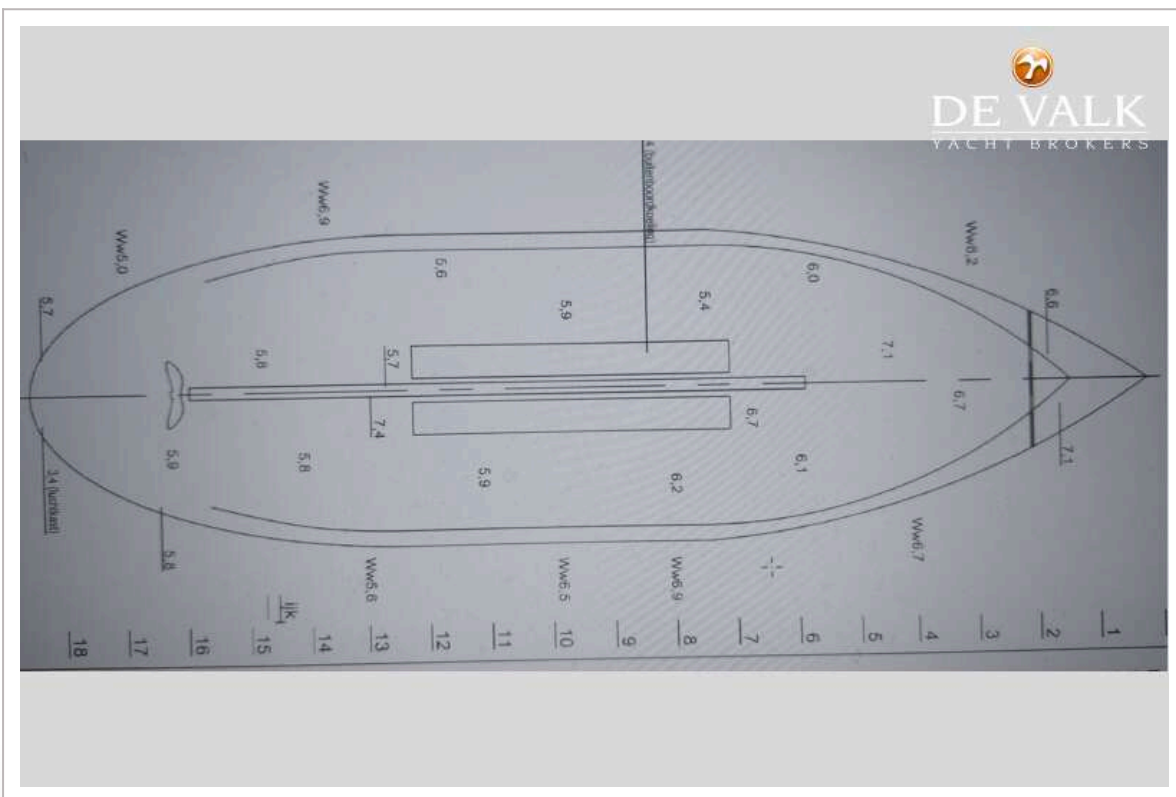
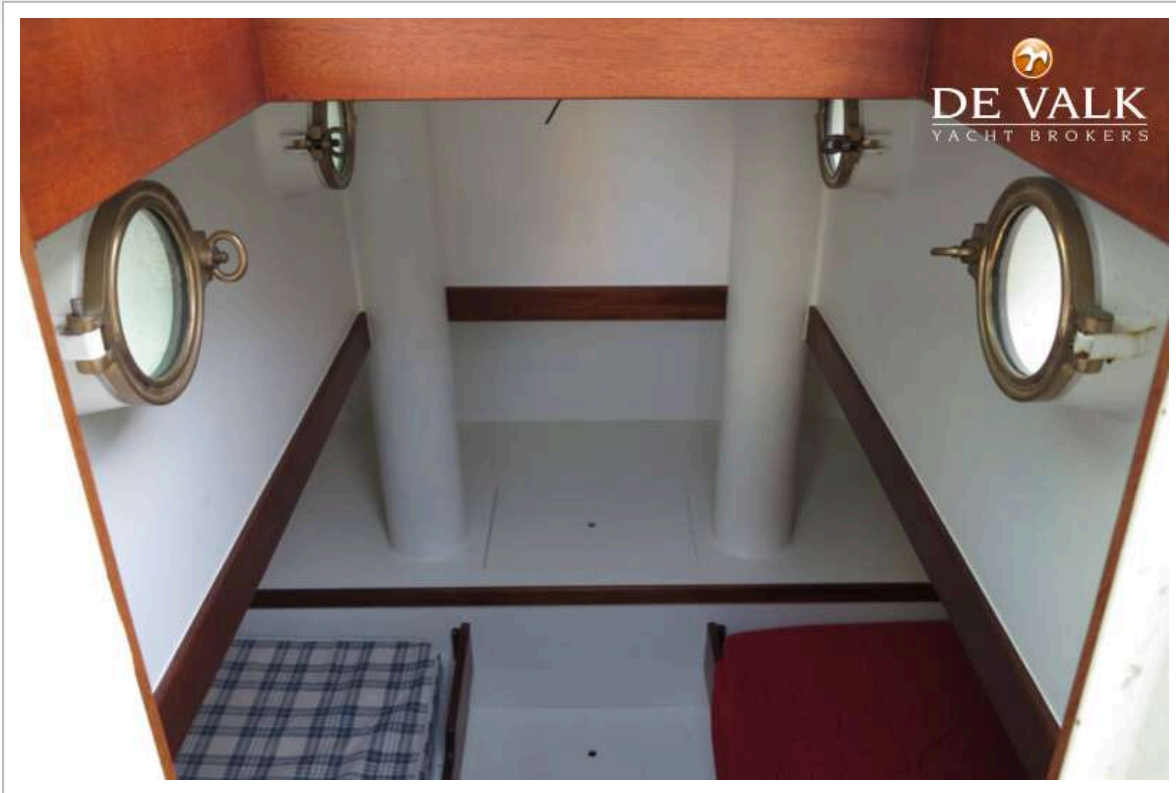
## PILOTHOUSE TRAWLER 60



## PILOTHOUSE TRAWLER 60



# PILOTHOUSE TRAWLER 60





# PILOTHOUSE TRAWLER 60

