



DE VALK
YACHT BROKERS



STEVENVLET 12.85



DE VALK
YACHT BROKERS

STEVENVLET 12.85

BROKER'S COMMENTS

Beautiful Steenvlet 12.85 named "Cascade" built by Merwelds Jachtbouw and designed by Jan Visser Yacht Design. This beautiful Steenvlet is very well equipped with central heating, air conditioning, dishwasher, washing machine, double glazing, etc.. This makes this Steenvlet 12.85 very comfortable in all seasons. Because of the powerful and reliable John Deere diesel engine and hydraulic bow thruster, the "Cascade" is also very well maneuverable.

Jochem Heijermans

SPECIFICATIONS

Dimensions	12.85 x 4.00 x 1.10 (m)	Builder	Merwelds Jachtbouw
Built	2004	Cabins	1
Material	Steel	Berths	4
Engine(s)	1 x John Deere 6068 DFM diesel	Hp/Kw	127.00 (hp), 93.35 (kw)
Asking price	sold (VAT)	Lying	elsewhere / Not at sales office

CONTACT

Sales office	De Valk Belgium	Telephone	+32 586 80 218
Address	1401 PT Nieuwpoort BE	E-mail	belgium@devalk.nl

DISCLAIMER

These particulars are given in good faith as supplied but cannot be guaranteed.



GENERAL

Model	STEVENVLET 12.85
Type	motor yacht
LOA (m)	12,85
Beam (m)	4,00
Draft (m)	1,10
Headroom (m)	2,00
Year built	2004
Builder	Merwelands Jachtbouw
Country	The Netherlands
Designer	Jan Visser Yacht Design
Displacement (t)	18
CE norm	C
Hull material	steel
Hull colour	blue
Hull thickness (mm)	Circa 5mm
Hull shape	round-bilged
Bilge keels	yes
Superstructure material	steel
Rubbing strake	fender rope
Deck finish	teak
Superstructure deck finish	teak
Cockpit deck finish	teak
Window frame	aluminium
Window material	double glazing
Deckhatch	2x
Portholes	aluminium
Mast can be lowered	hydraulic
Fuel tank (litre)	stainless steel 1000
Level indicator (fuel tank)	yes
Freshwater tank (litre)	stainless steel 500



Level indicator (freshwater)	yes
Blackwater tank (litre)	300
Level indicator (blackwater)	yes
Blackwater tank extraction	deck extraction + pump
Wheel steering	hydraulic

ACCOMMODATION

Cabins	1
Berths	4
Interior	teak
Floor	carpet
Open cockpit	yes
Saloon	yes
Headroom saloon (m)	2
Sliding roof	manual
Heating	central heating Maritime Booster
Heating 2	electric 220V Myson Kickspace 800
Air-conditioning	single cycle airco Owners cabin
Opening door to cockpit	yes
Galley	yes
Countertop	granite
Sink	stainless steel
Cooker	induction 4 burner
Extractor	yes
Fridge	(2020)
Hot water system	220V or central heating
Water pressure system	electrical
Dishwasher	yes
Crockery	yes
Owners cabin	French bed
Bed length (m)	1,40 x 2.00



Wardrobe	hanging/drawers/shelves
Bathroom	shared
Toilet	shared
Toilet system	electric
Wash basin	at the toilet
Shower	shared
Washing machine	Indesit
Extra info	Upholstery salon (2021)

MACHINERY

No of engines	1
Make	John Deere
Type	6068 DFM
HP	127
kW	93,35
Fuel	diesel
Year installed	2004
Engine hours	1410
Engine cooling system	freshwater heat exchanger
Drive	shaft
Engine controls	bowden cable
Gearbox	hydraulic
Bowthruster	hydraulic Vetus
Exhaust	watercooled
Propeller type	fixed
Propeller blades	5
Shaft lubrication	grease
Electric bilge pump	yes
Generator	silent separator Mastervolt Whisper 8000
Running hours generator	285
Start battery	1x



Service battery	4x
Navigation Battery	yes
Generator battery	yes
Battery monitor	Mastervolt
Battery charger	Mastervolt 24V/50Ah
Inverter	Mastervolt
Shorepower	
Insulation transformer	yes

NAVIGATION

Electric compass	Lowrance X-104
Depth sounder/log	Lowrance X-104
Fish finder	Lowrance X-104
VHF	Icom Marine ic-m401
Autopilot	Vetus Remote controll
Radar	JRC 1000MKII
Plotter/GPS	Lowrance X-104
Navigation lights	yes

EQUIPMENT

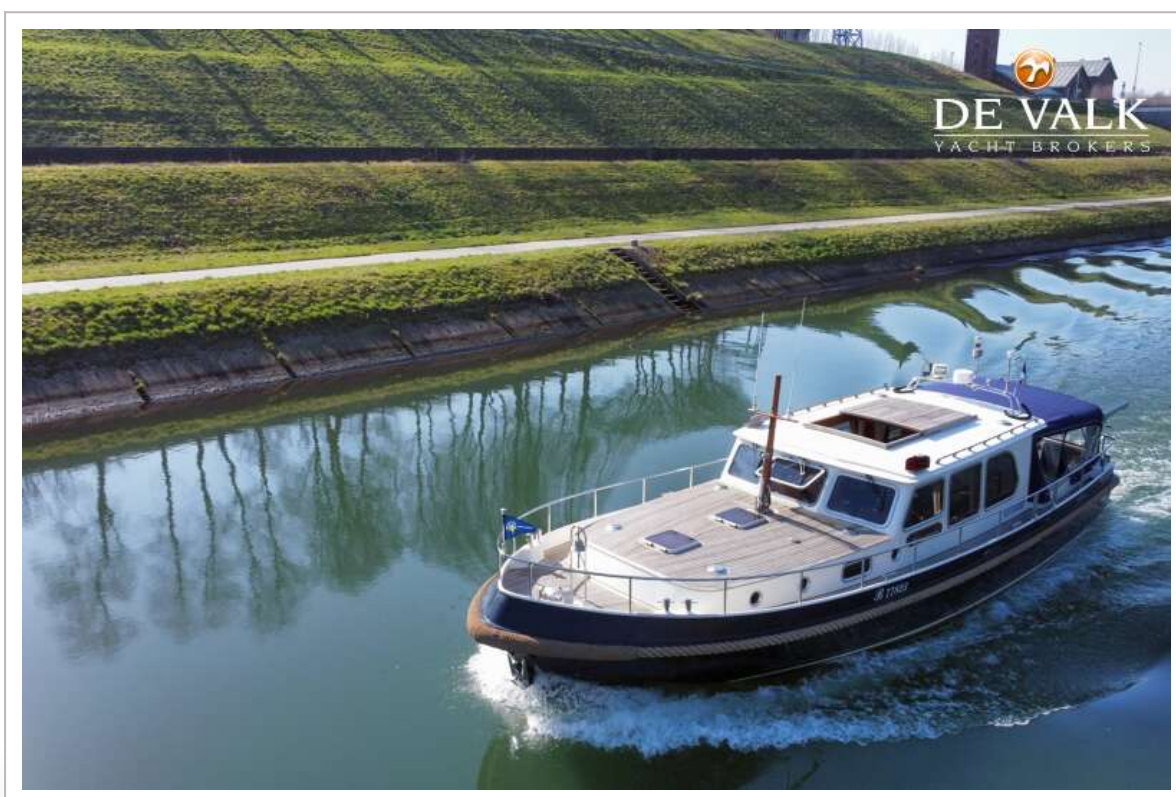
Fixed windscreen	yes
Cockpit cover	2021
Cockpit cushions	yes
Cockpit table	yes
Bathing platform	yes
Boarding ladder	stainless steel
Transom door	yes
Bow ladder	yes
Gangway	yes
Deck shower	yes
Windlass	hydraulic



Capstan	yes
Deck wash	yes
Davits	
Davits controls	manual
Grab rail (superstructure)	stainless steel
Railing side opening gates	2x
Pushpit	yes
Pulpit	yes
Lifejackets	yes
Wiper	yes
Horn	
Fenders	yes
Mooring lines	yes
TV	LG (2020)
TV receiver	yes
Radio-cd player	yes
DVD player	LG
Surround Sound System	JVC
Sub-woofer	JVC
Speakers in salon	yes
Speakers in cabin	yes
Fire extinguisher	yes



STEVENVLET 12.85



STEVENVLET 12.85



STEVENVLET 12.85



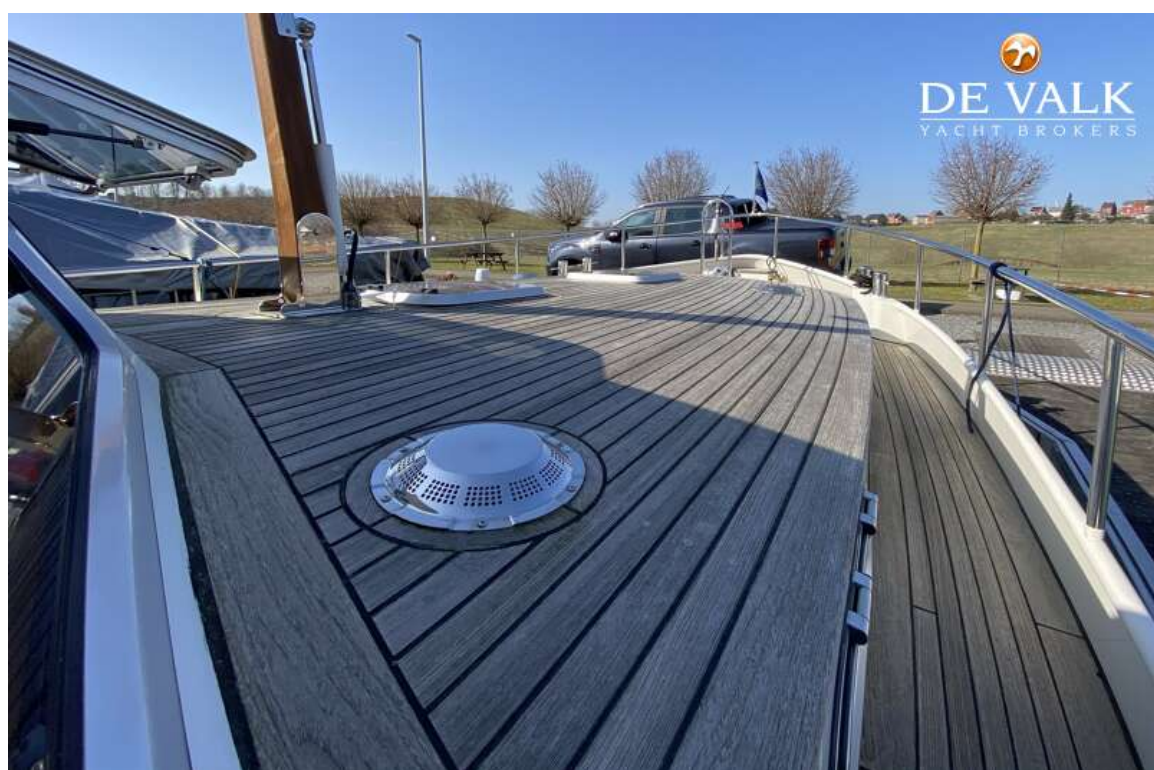
STEVENVLET 12.85



STEVENVLET 12.85



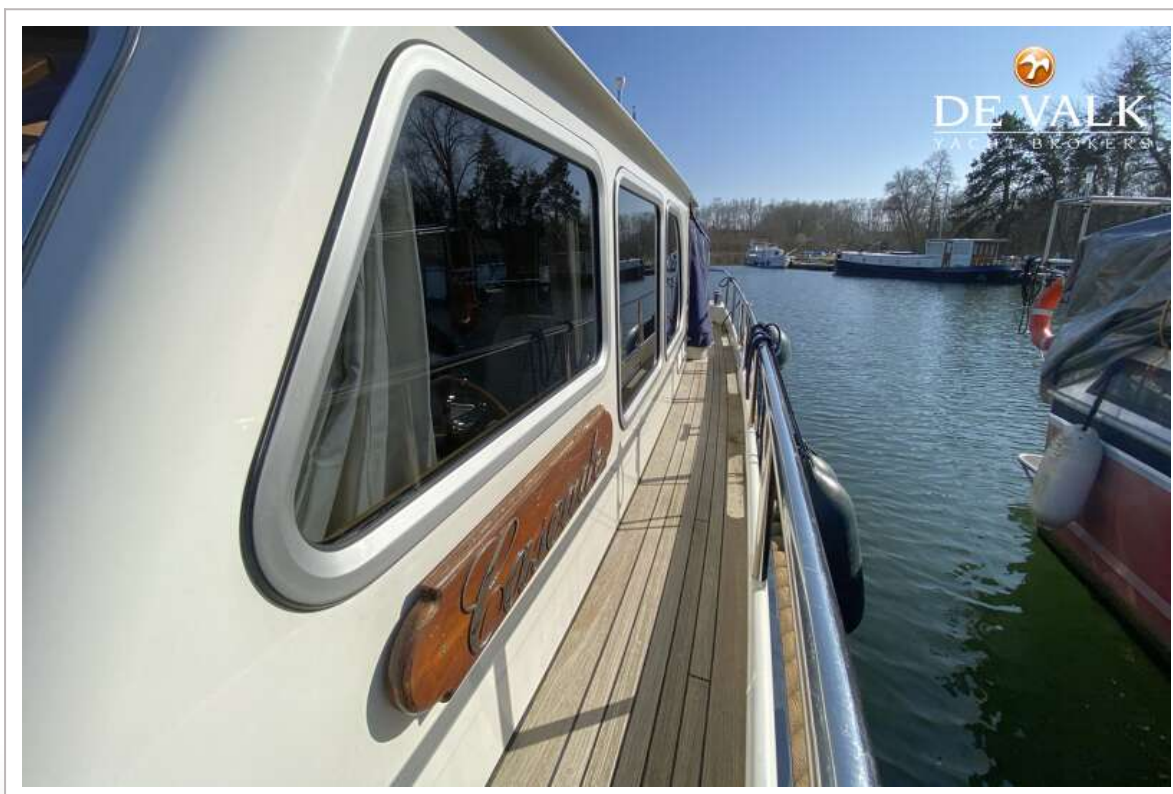
STEVENVLET 12.85



STEVENVLET 12.85

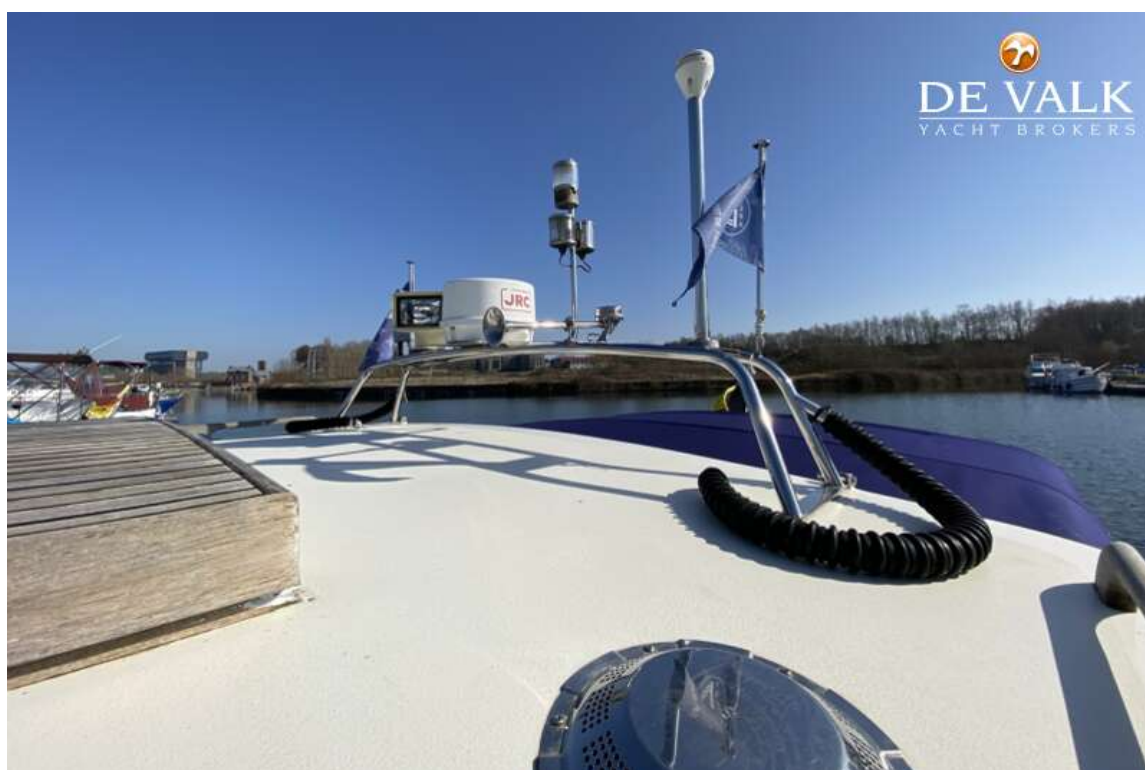


STEVENVLET 12.85





STEVENVLET 12.85



STEVENVLET 12.85

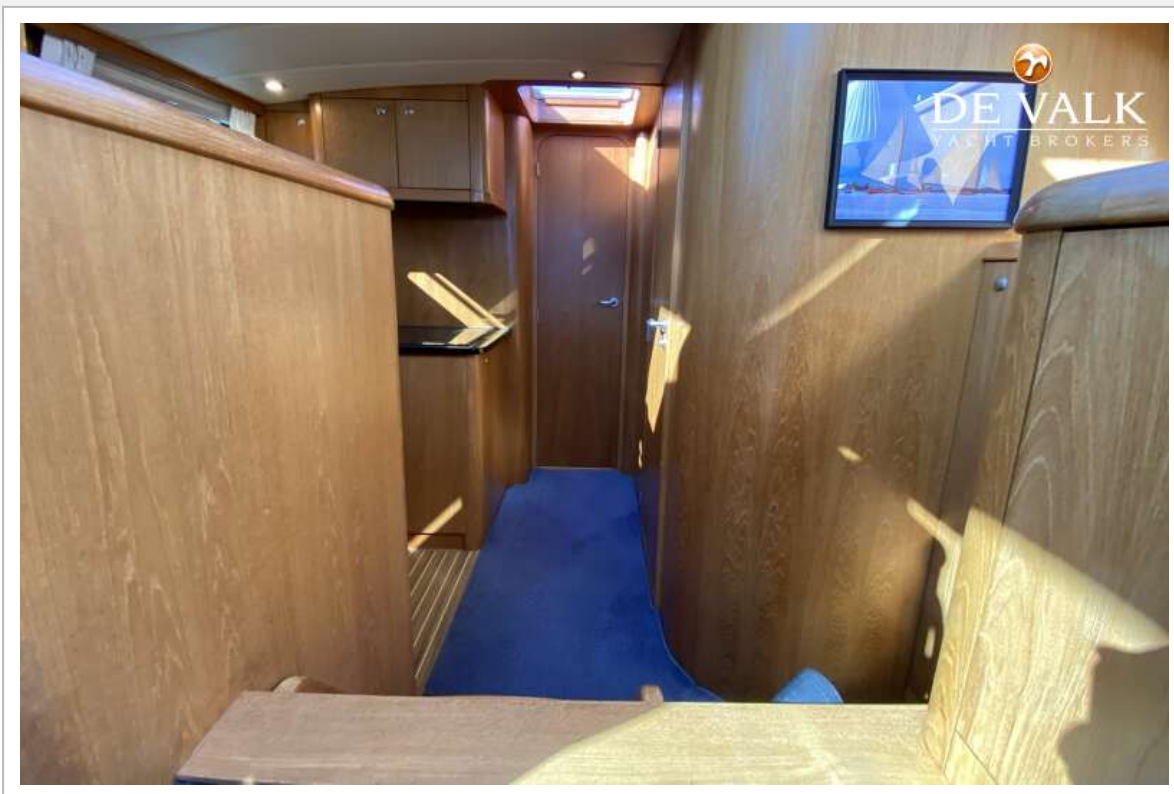


STEVENVLET 12.85

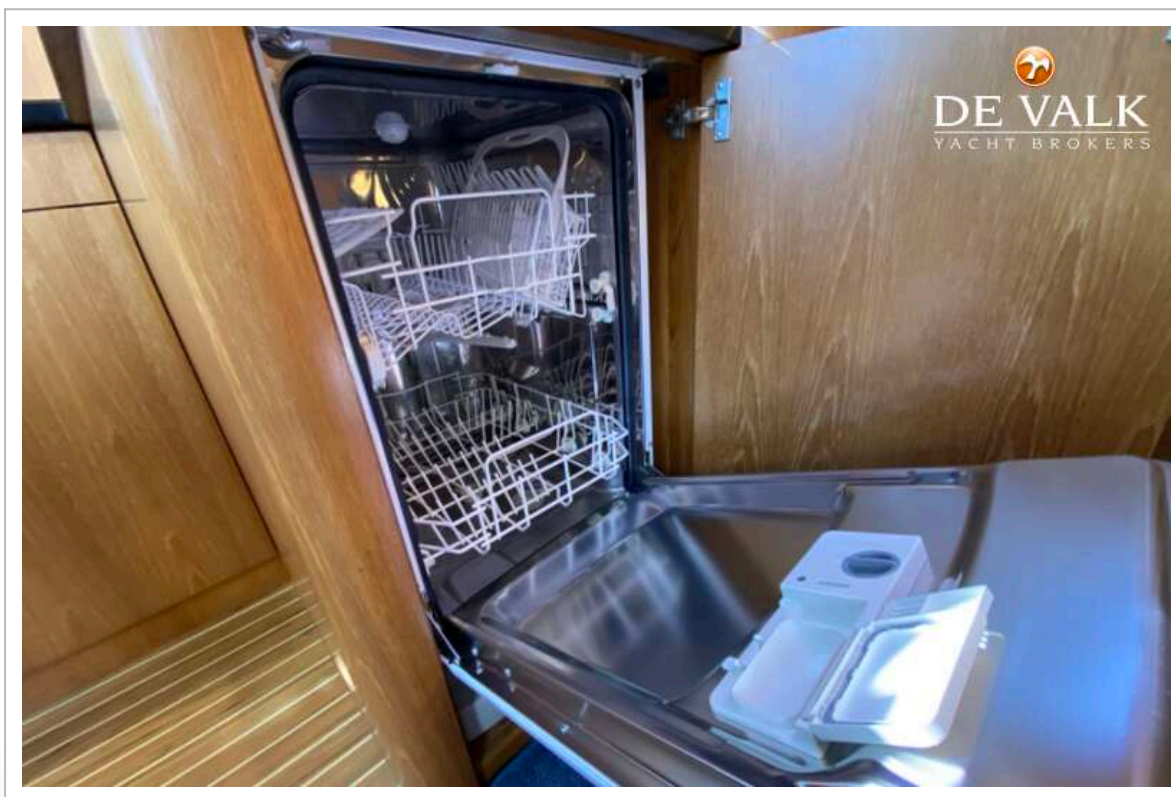


STEVENVLET 12.85

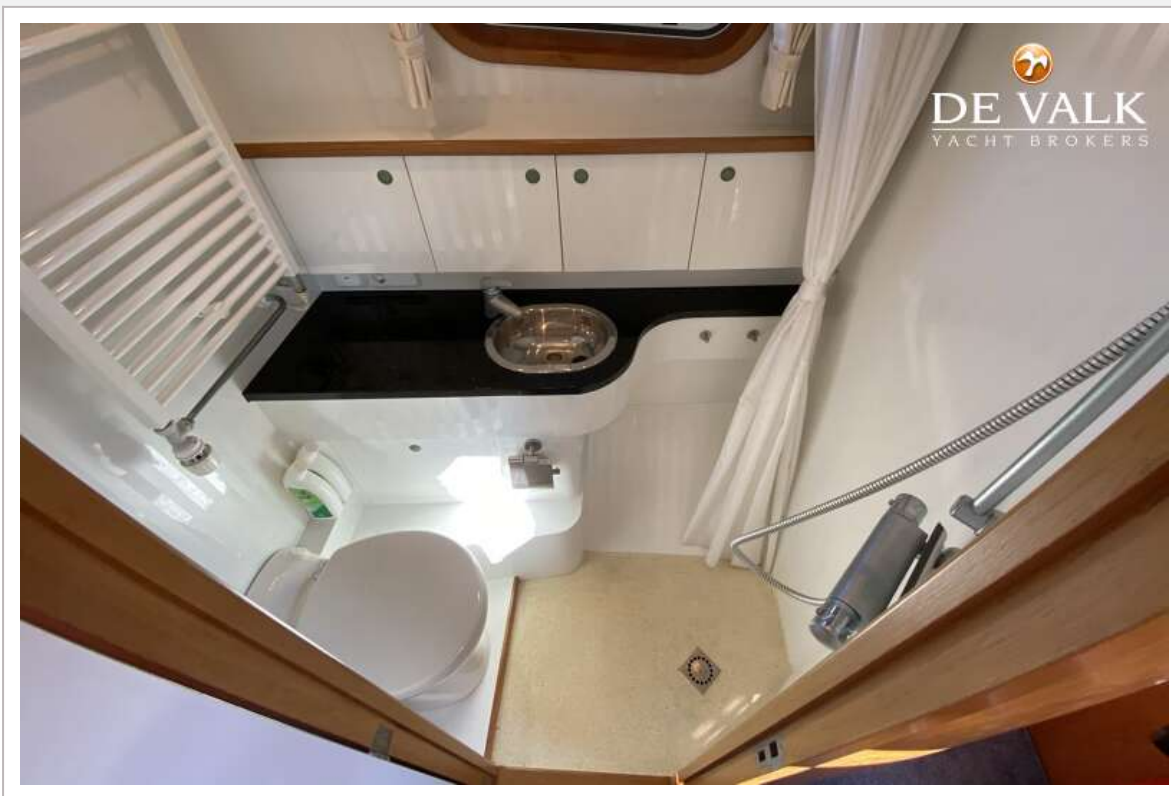












STEVENVLET 12.85





