



DE VALK
YACHT BROKERS



SEASTREAM 43 MKII



DE VALK
YACHT BROKERS

BROKERAGE | CHARTER | BERTHS | FINANCE | INSURANCE | YACHT MANAGEMENT

SEASTREAM 43 MKII

BROKER'S COMMENTS

A well designed, proven deck salon sailing yacht with the added bonus of a large cockpit and sheltered steering position. The Seastream 43 MkII is a real yacht for all seasons to explore far away horizons with family and friends. As the current and the previous owners did. She is a strong yacht that can handle all conditions. Below decks ample stowage space, three separate cabins and two bathrooms for added privacy and comfort. These Seastream's do not come onto the market often. She is that reliable yacht that can bring you safely to any port of call.

Marc Weijenberg

SPECIFICATIONS

Dimensions	13.25 x 4.36 x 1.83 (m)	Builder	Southern Boatbuilding Co
Built	1986	Cabins	3
Material	GRP	Berths	6
Engine(s)	1 x Perkins 4236M diesel	Hp/Kw	80.00 (hp), 58.80 (kw)
Asking price	sold (VAT)	Lying	elsewhere / Not at sales office

CONTACT

Sales office	De Valk Sint Annaland B.V.	Telephone	+31 (0)166 601 000
Address	Koelhuisweg 4 4697 RM Sint Annaland NL	E-mail	sintannaland@devalk.nl

DISCLAIMER

These particulars are given in good faith as supplied but cannot be guaranteed.



SEASTREAM 43 MKII

GENERAL

Model	SEASTREAM 43 MKII
Type	sailing yacht
LOA (m)	13,25
LWL (m)	10,80
Beam (m)	4,36
Draft (m)	1,83
Air draft (m)	18,00
Headroom (m)	1,96
Year built	1986
Builder	Southern Boatbuilding Co
Country	United Kingdom
Designer	Ian Anderson
Displacement (t)	14
Ballast (tonnes)	cast iron
Hull material	GRP
Hull colour	white
Hull shape	S-bilged
Superstructure material	GRP
Rubbing strake	wood
Deck material	GRP
Deck finish	teak
Cockpit deck finish	teak
Window frame	aluminium
Window material	tempered glass
Deckhatch	yes
Portholes	aluminium
Fuel tank (litre)	polyethylene 675
Freshwater tank (litre)	stainless steel 2 x 400
Blackwater tank (litre)	epoxy 70
Blackwater tank extraction	pump



Inside helm position	mechanical Whitlock
Outside helm position	mechanical Whitlock
Emergency tiller	yes
Extra info	teak on deck needs work
Extra info	black watertank is for aft toilet only

ACCOMMODATION

Cabins	3
Berths	6
Interior	teak
Floor	teak and holly
Pilot house/deck saloon	yes
Headroom saloon (m)	1,96 - 1,90
Heating	diesel ducted hot air Eberspaecher D3L
Air-conditioning	ECS (220v, defect)
Aft Cabin	yes
Dinette	in decksalon
Galley	rebuilt in 2011
Countertop	yes
Sink	stainless steel 2 x
Cooker	calor gas Eno 3 burner (2011)
Oven	Eno (2011)
Microwave/oven combi	Panasonic (220v)
Fridge	watercooled Frigomatic (defect)
Hot water system	by engine Isothemp 60ltr (2011)
Water pressure system	electrical
Owners cabin	double bed
Bed length (m)	2,00 x 1,90
Wardrobe	hanging/drawers/shelves
Bathroom	en suite I
Toilet	en suite Blake



SEASTREAM 43 MKII

Toilet system	manual
Wash basin	in the bathroom
Shower	en suite
Guest cabin 1	v-bed
Bed length (m)	2,00 x 1,90
Wardrobe	shelves
Bathroom	II
Toilet	shared Blake
Toilet system	manual
Wash basin	in the bathroom
Shower	shared
Guest cabin 2	bunk bed
Wardrobe	drawers
Extra info	the interior has three separate cabins with ample storage space. Most predominant is the decksalon with inside steering position

MACHINERY

No of engines	1
Make	Perkins
Type	4236M
HP	80
kW	58,80
Fuel	diesel
Year installed	1986
Maximum speed (kn)	7,5
Cruising speed (kn)	6,5
Consumption (l/hr)	4
Engine cooling system	freshwater heat exchanger
Drive	shaft
Engine controls	bowden cable
Gearbox	Hurth (overhauled 2017)



SEASTREAM 43 MKII

Bowthruster	electric Vetus
Exhaust	watercooled
Propeller type	fixed
Propeller blades	3
Propeller shaft material	stainless steel
Manual bilge pump	yes
Electric bilge pump	yes
Electrical installation	12/220v
Generator	wet exhaust HFL Gemini 6kW (not currently in operation)
Start battery	2 x
Service battery	2 x 220ah (2017)
Battery charger	Mastervolt 12v/50amp
Inverter	Mastervolt 12v/500watt
Wind generator	Airmarine 400watt
Solar panel	3 x (2015)
Shorepower	yes
Extra info	Alpha Pro charging optimiser

NAVIGATION

Compass	Plastimo Horizon 135
Electric compass	via autopilot
Depth sounder	Raymarine ST60
Log	Raymarine ST60
Windset	Raymarine ST60
VHF	+ cockpit connection Icom ICM58
Autopilot	with remote control Raymarine ST6002 (drive overhauled 2019)
Radar	Raymarine
GPS	Raymarine
Plotter	Raymarine C120
Electronis chart(s)	1 x
Navigation lights	yes



EQUIPMENT

Sprayhood	needs repair
Cockpit cover	annex Bimini (needs repair) (2011)
Cockpit table	yes
Bathing platform	yes
Boarding ladder	stainless steel
Deck shower	hot and cold
Anchor	CQR Plough
Anchor chain	90 mtrs
Anchor 2	yes
Windlass	electrical Vetus Titan
Capstan	Vetus Titan
Davits	stainless steel
Sea railing	stainless steel
Railing side opening gates	yes
Pushpit	yes
Pulpit	yes
Life raft	container BFA
Life raft (pers)	6
Lifebuoy	yes
Danbuoy	yes
Wiper	yes
Extra info	safe secure wrap-around stainless sea railing
Extra info	Magma BBQ
Extra info	Currently berthed at Corfu Greece.

RIGGING

Rigging	ketch-cutter
Standing rigging	wire Partially new 2008 with Stalock terminals
Brand mast	Proctor
Material mast	aluminium



Fully battened mainsail	with vertical battens Furling Hood (2004)
Stoway mast	yes
Mizzen	Furling Hood (2004)
Genoa	Furling Hood (2004)
Genoa furler	Profurl 420 (2020)
Booster	with squeezer
Staysail	on hanks Hood (2004)
Removable innerforestay	yes
Reefing System	main in-mast furling
Boomvang	mechanical
Primary sheet winch	2 x Lewmar ST48
Secondary sheet winch	2 x
Halyard winches	2 x
Spi-pole	aluminium



SEASTREAM 43 MKII



SEASTREAM 43 MKII



SEASTREAM 43 MKII



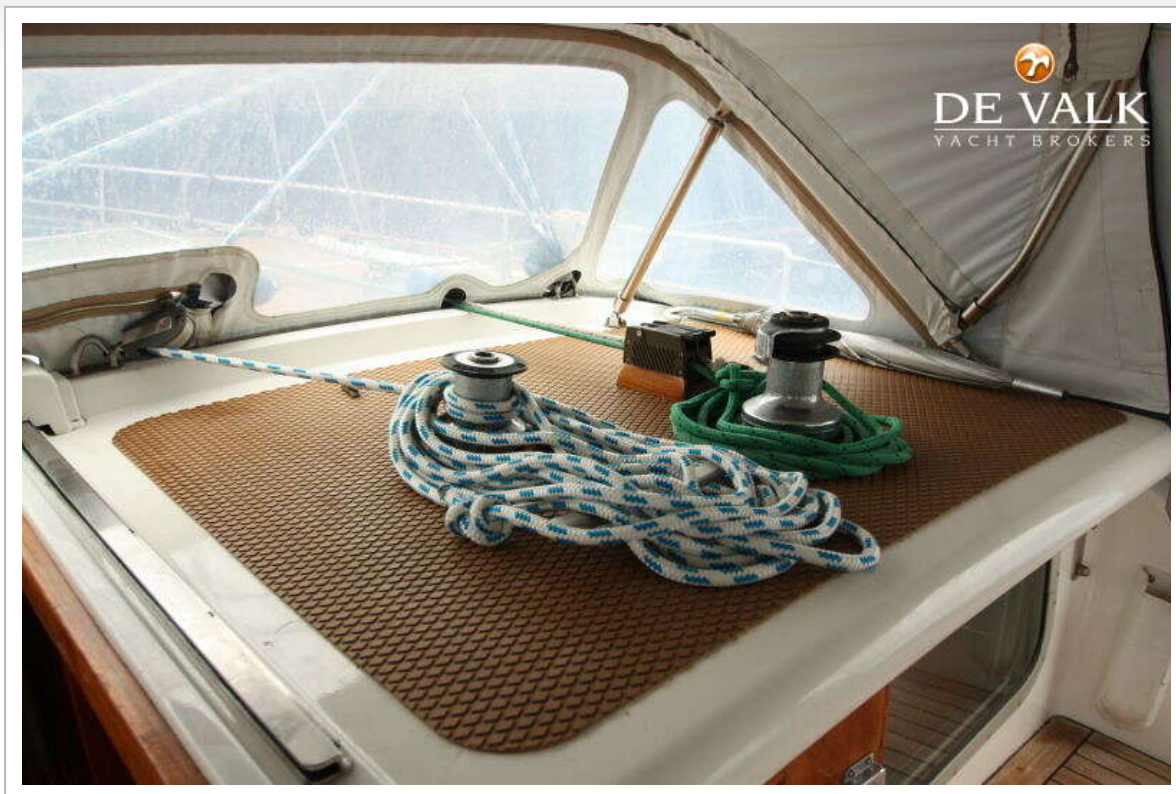
SEASTREAM 43 MKII



SEASTREAM 43 MKII



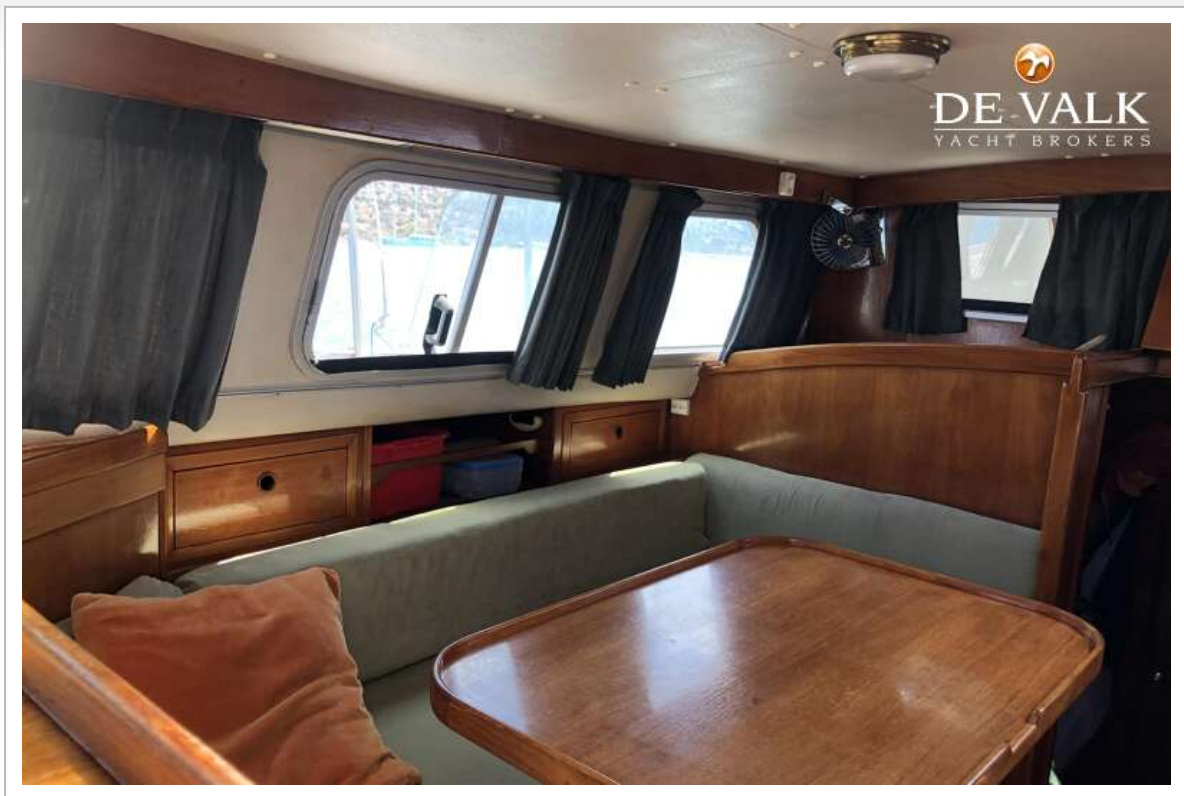
SEASTREAM 43 MKII



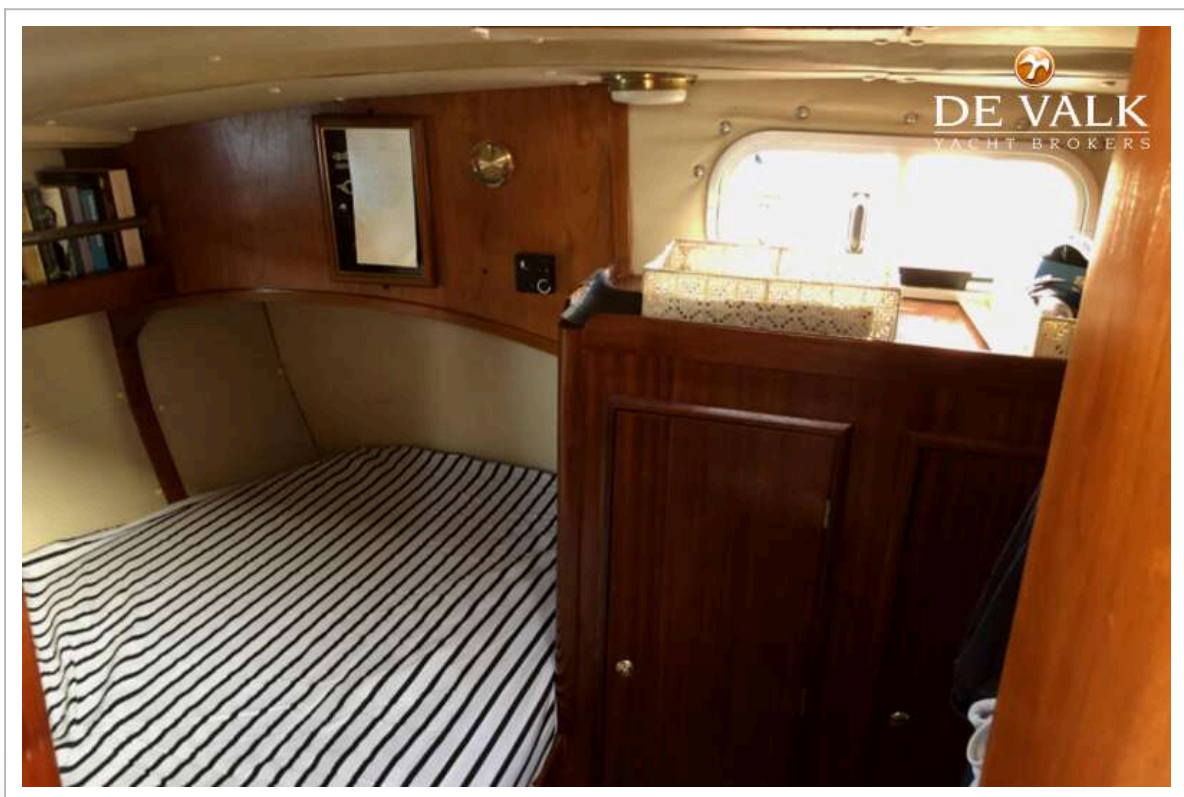
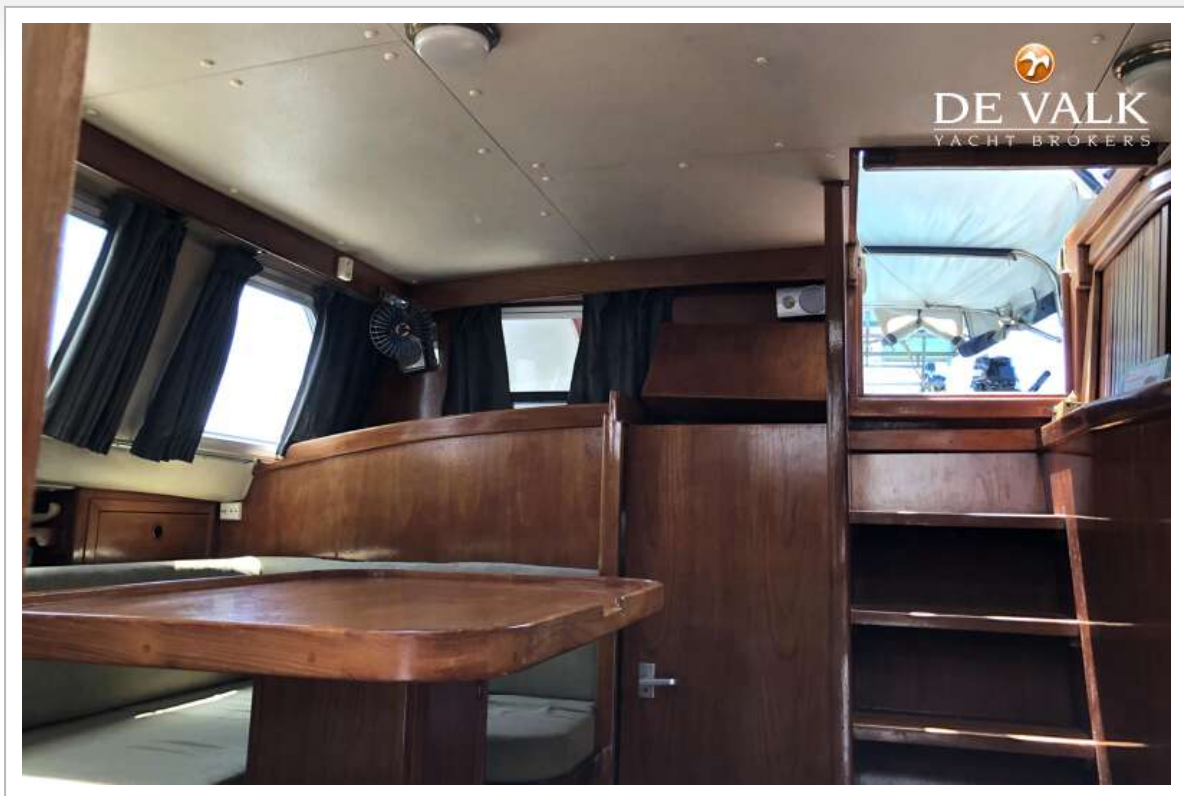
SEASTREAM 43 MKII



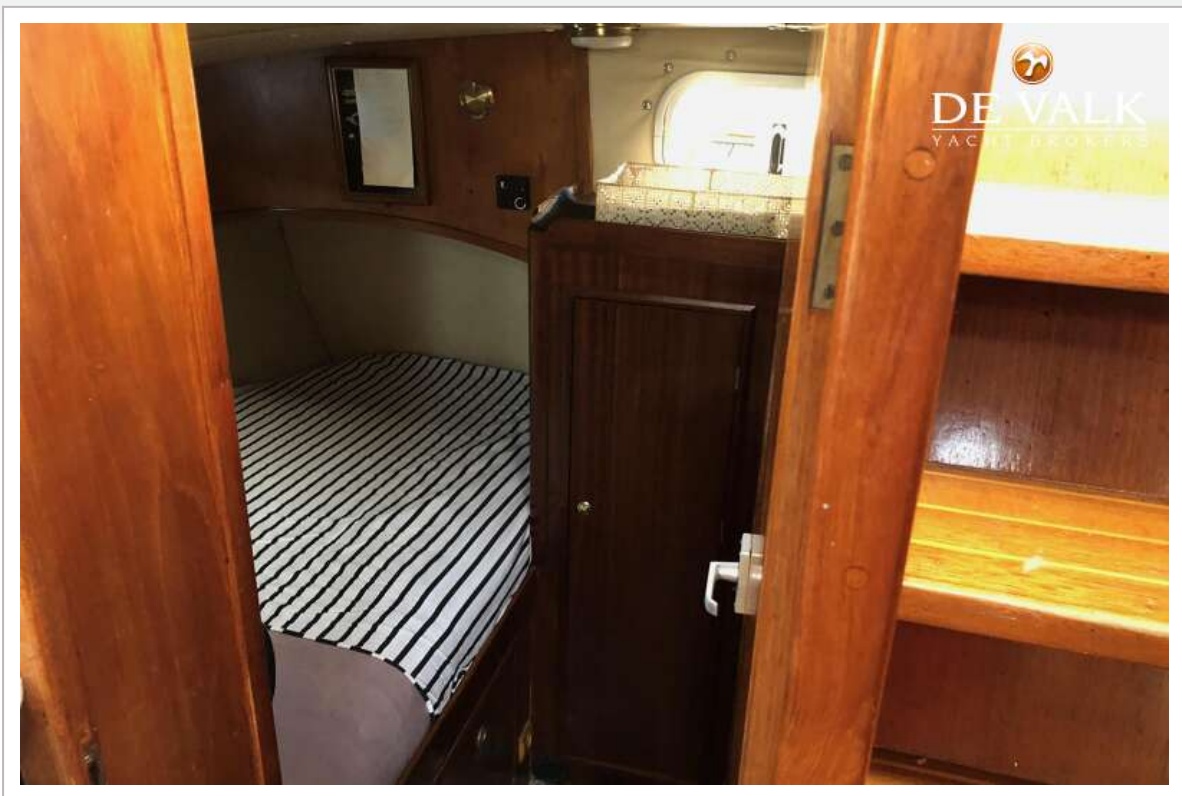
SEASTREAM 43 MKII



SEASTREAM 43 MKII



SEASTREAM 43 MKII



SEASTREAM 43 MKII



SEASTREAM 43 MKII



SEASTREAM 43 MKII

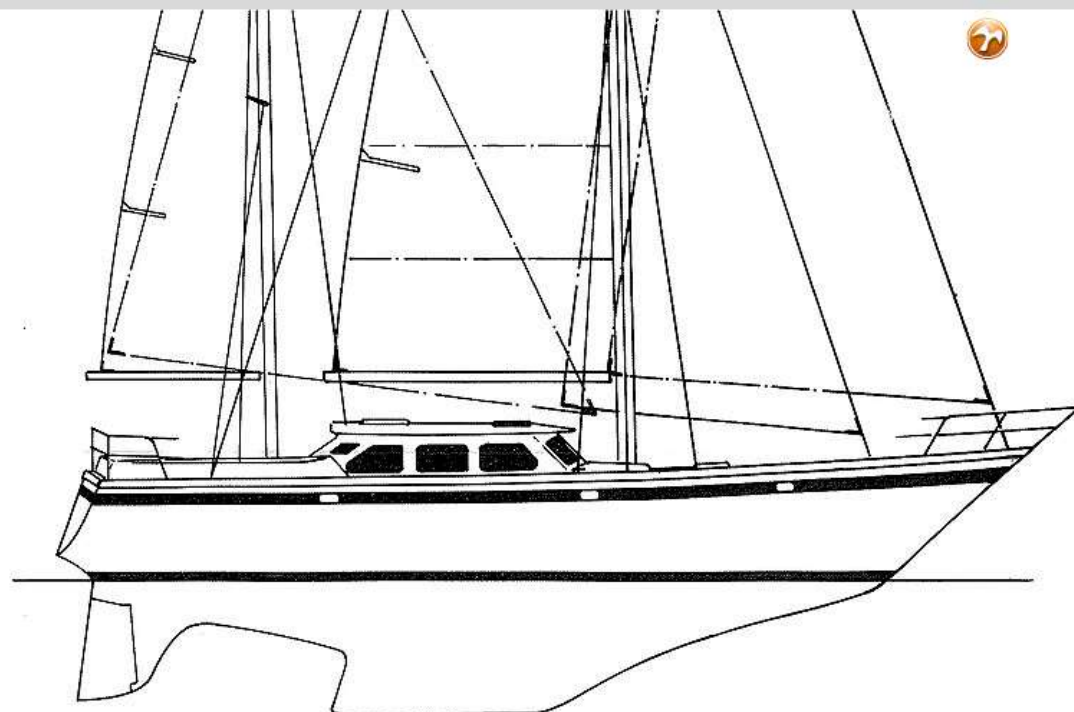
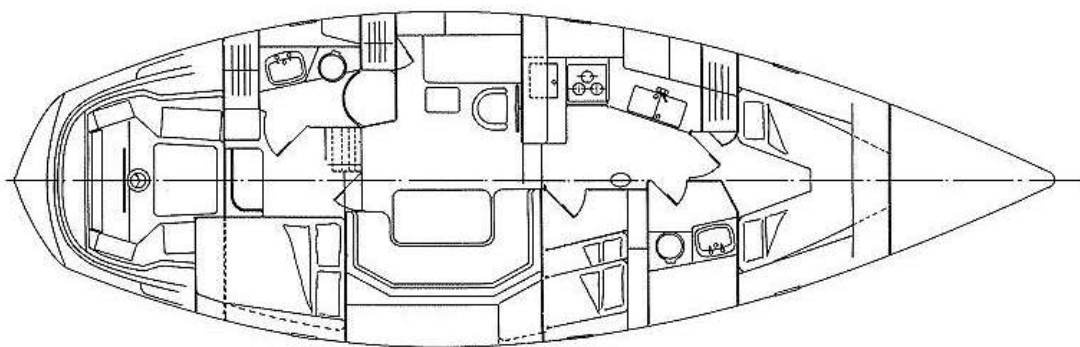


SEASTREAM 43 MKII



SEASTREAM 43 MKII


DE VALK
YACHT BROKERS



SEASTREAM 43 MKII



SEASTREAM 43 MKII

