



## FARR 525 DECK SALOON



# FARR 525 DECK SALOON

## BROKER'S COMMENTS

The Farr 525 is the evolution of the previous successful Farr 50 Pilot House. She has the same hull but with its light modern mahogany interior, her spacious saloon, galley and three cabins, she has become a contemporary cruiser and the journey is guaranteed to be comfortable. Significant for this model are her twin cockpits, one for sailing and the other for relaxation being protected by a sprayhood. Farr 525 DS takes her place among the fastest long-distance cruisers, and thanks to her cutter rig, she has the flexibility required for all kinds of weather. Overall, she is worth a serious look

*Reinier van der Wolf*

## SPECIFICATIONS

<b>Dimensions</b>	15.97 x 4.70 x 2.30 (m)	<b>Builder</b>	BSI Marine and Erixon Yachts
<b>Built</b>	2006	<b>Cabins</b>	3
<b>Material</b>	GRP	<b>Berths</b>	6
<b>Engine(s)</b>	1 x Yanmar 4JH3-HTE diesel	<b>Hp/Kw</b>	92.00 (hp), 67.71 (kw)
<b>Asking price</b>	sold (VAT )	<b>Lying</b>	elsewhere / Not at sales office

## CONTACT

<b>Sales office</b>	De Valk Monnickendam B.V.	<b>Telephone</b>	+31 (0)299 65 63 50
<b>Address</b>	Hoogedijk 6 1145 PM Katwoude NL	<b>E-mail</b>	monnickendam@devalk.nl

## DISCLAIMER

These particulars are given in good faith as supplied but cannot be guaranteed.



# FARR 525 DECK SALOON

## GENERAL

Model	FARR 525 DECK SALOON
Type	sailing yacht
LOA (m)	15,97
LWL (m)	13,43
Beam (m)	4,70
Draft (m)	2,30
Air draft (m)	23,00
Year built	2006
Launched	2006
Builder	BSI Marine and Erixon Yachts
Country	Sweden
Designer	Farr Yacht Design
Displacement (t)	17,5
Ballast (tonnes)	lead 6,125
CE norm	A
Hull material	GRP
Hull colour	white
Hull shape	round-bilged
Keel type	wing keel
Superstructure material	epoxy and foam core
Deck material	epoxy and foam core Vinylester
Deck finish	teak
Cockpit deck finish	teak
Antifouling (year)	2021
Dorades	2
Window frame	aluminium
Window material	tempered glass
Deckhatch	yes
Portholes	aluminium
Insulation	foam



# FARR 525 DECK SALOON

Flybridge suncover	yes
Fuel tank (litre)	stainless steel 570
Level indicator (fuel tank)	yes
Freshwater tank (litre)	stainless steel 560
Level indicator (freshwater)	yes
Blackwater tank (litre)	stainless steel 120
Level indicator (blackwater)	yes
Blackwater tank extraction	deck extraction + uw line
Greywater tank (litre)	+ pump
Wheel steering	mechanical
Outside helm position	mechanical
Emergency tiller	yes

## ACCOMMODATION

Cabins	3
Berths	6
Interior	mahogany
Floor	teak and holly
Open cockpit	yes
Deck saloon	yes
Headroom saloon (m)	1.90
Heating	diesel ducted hot air
Chart table	yes
Aft Cabin	yes
Dinette	yes
Dinette to convert into berth	2 additional berths by lowering the table in the main cabin
Galley	yes
Countertop	corian
Sink	stainless steel
Cooker	calor gas
Oven	yes



# FARR 525 DECK SALOON

Microwave	yes
Fridge	yes
Freezer	yes
Hot water system	220V + engine
Water pressure system	electrical
Manual and/or foot pump	yes
Kettle	yes
Coffee maker	yes
Owners cabin	double bed
Bed length (m)	2.00
Wardrobe	hanging/drawers/shelves
Bathroom	en suite
Toilet	en suite
Toilet system	manual
Wash basin	in the bathroom
Shower	en suite
Guest cabin 1	bunk bed
Bed length (m)	2.00
Wardrobe	hanging/drawers/shelves
Bathroom	shared
Toilet	shared
Toilet system	manual
Wash basin	in the bathroom
Shower	shared
Guest cabin 2	bunk bed
Bed length (m)	2.00
Wardrobe	hanging/drawers/shelves
Bathroom	shared
Toilet	shared
Toilet system	manual
Wash basin	in the bathroom
Shower	shared



# FARR 525 DECK SALOON

## MACHINERY

No of engines	1
Make	Yanmar
Type	4JH3-HTE
HP	92
kW	67,71
Fuel	diesel
Year installed	2006
Year of overhaul	The engine overhaul included essentially a Yanmar 1000 hour service including:- change of impeller - checking the injectors (taking out and cleaning) - changing the fuel pump - changing the turbo vent - changing the alternator belts - checking remote controls - changing the cooling liquid - checking all hoses. All done in 2021.
Maximum speed (kn)	7
Cruising speed (kn)	6
Range (nm)	570
Engine hours	1850
Engine cooling system	seawater
Drive	shaft
Shaft seal	yes
Engine controls	mechanical
Gearbox	mechanical
Bowthruster	electric Lewmar retracable
Gearbox	mechanical
Exhaust	watercooled
Propeller type	folding
Propeller blades	Gori folding propeller with three blades
Propeller shaft material	stainless steel New shaft installed 2020
Shaft lubrication	water
Manual bilge pump	yes
Electric bilge pump	3
Bilge alarm	yes



# FARR 525 DECK SALOON

Electrical installation	yes
Generator	wet exhaust Mastervolt Whisperer 8 kw.
Running hours generator	420
Batteries	4x 12V 180 amp
Start battery	1
Inverter	Mastervolt
Battery charger/inverter	Mastervolt
Shorepower	with cable
Insulation transformer	yes

## NAVIGATION

Compass	2
Multi control display	yes
Depth sounder	yes
Log	yes
Windset	yes
VHF	2
Radar	yes
GPS	yes
Plotter	2 Raymarine Axiom 12 inch plotters installed in 2018
Radar/GPS/plotter	yes
Weather receiver	Furuno
Wifi antenna	yes
AIS receiver	yes
AIS transponder	yes
EPIRB	yes
Personal MOB transmitter	2
Navigation lights	yes

## EQUIPMENT

Bimini	yes
--------	-----



# FARR 525 DECK SALOON

Cockpit cushions	yes
Cockpit table	yes
Bathing platform	yes
Boarding ladder	aluminum Carbon
Transom door	yes
Gangway	yes
Deck shower	yes
Anchor	
Anchor chain	80m
Anchor 2	Danforth
Anchor chain	20
Windlass	electrical Lewmar
Dinghy	inflatable Honwave
Outboard	Honda 2,3
Sea railing	wire
Grab rail (superstructure)	stainless steel
Railing side opening gates	2
Life raft	valise (or bag) 2x
Life raft (pers)	6
Last life raft survey	2019
Lifejackets	8
Safety harness	8
Lifebuoy	1
Safety lines on deck	yes
Horn	electric
Binocular	yes
Radar reflector	yes
Fenders	10
Mooring lines	yes
Spare parts	yes
Tools	yes
TV	yes





# FARR 525 DECK SALOON

Radio	yes
DVD player	yes
iPod connection	yes
Surround Sound System	yes
Cockpit speakers	yes
Speakers in salon	yes
Clock - barometer	yes
Fire extinguisher	7
Extra info	New hydraulic backstay and vang Reckmann in 2020

## RIGGING

Rigging	sloop-cutter Original
Standing rigging	wire 2006
Brand mast	Seldén
Material mast	aluminium
Spreaders	3 pairs
Keel stepped mast	yes
Mainsail	yes
Mainsail cover	yes
Battcars	yes
Fully battened mainsail	good condition not very much used 2006
Jib	good condition not very much used 2006
Genoa	good condition not very much used 2006
Genoa furler	Electric furler Bamar installed in 2020
Cutter furler	yes
Reefing System	slabreefing
Backstay adjuster	hydraulic Holmatro Reckmann installed 2021
Boomvang	hydraulic Holmatro Reckmann installed 2021
Genoa sheetwinches	yes
Halyard winches	yes
Multifunctional winches	halyard/sheet winches 1x electric





# FARR 525 DECK SALOON



# FARR 525 DECK SALOON





## FARR 525 DECK SALOON





# FARR 525 DECK SALOON





## FARR 525 DECK SALOON





## FARR 525 DECK SALOON



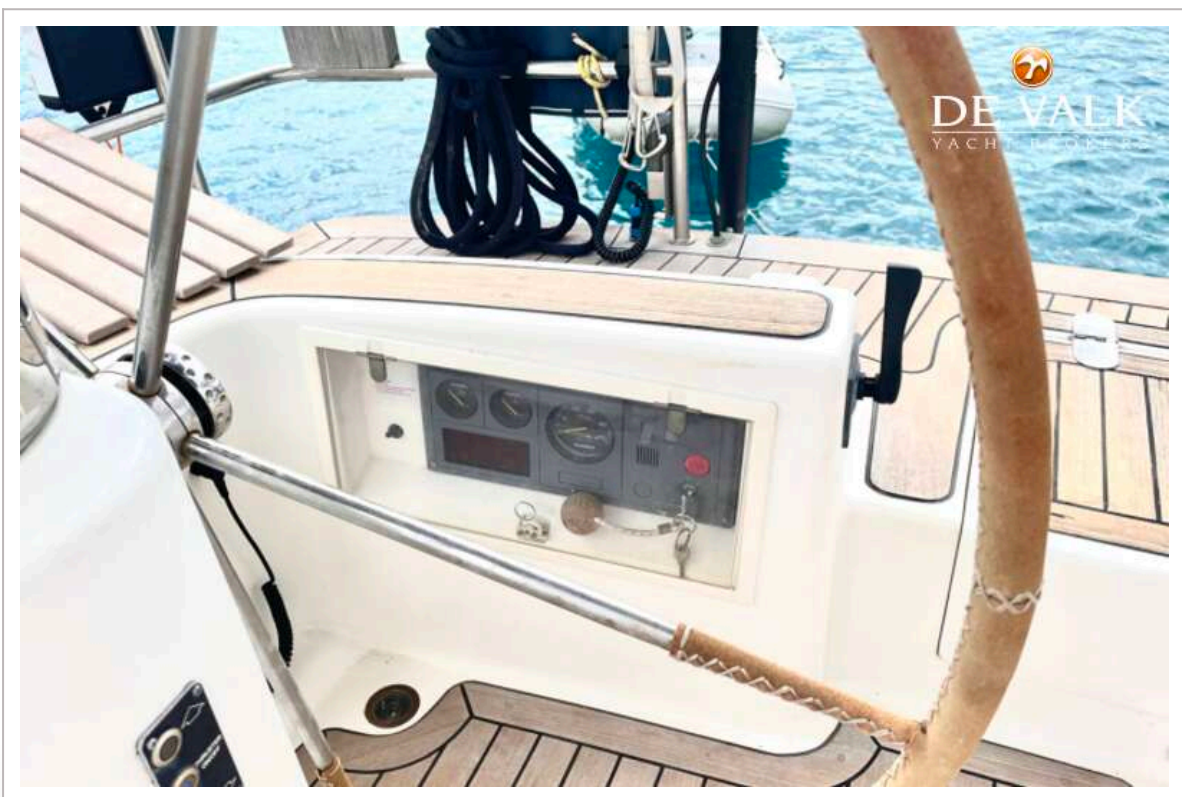


# FARR 525 DECK SALOON



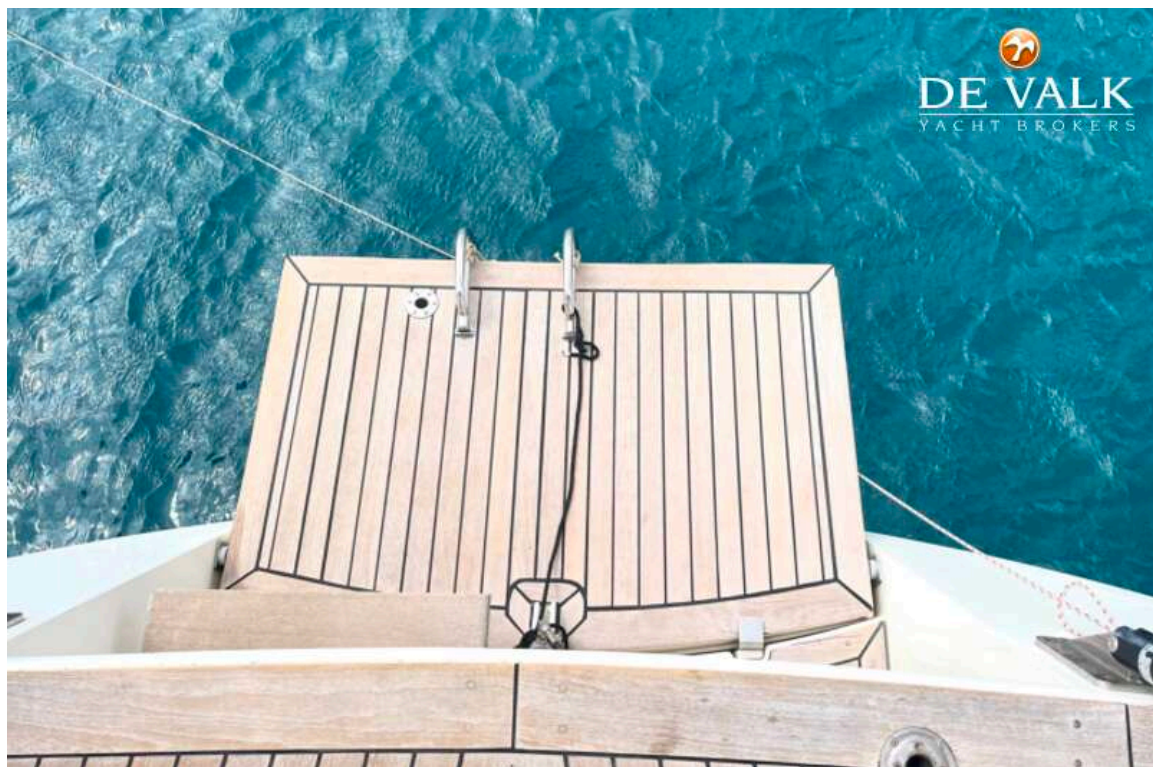


## FARR 525 DECK SALOON

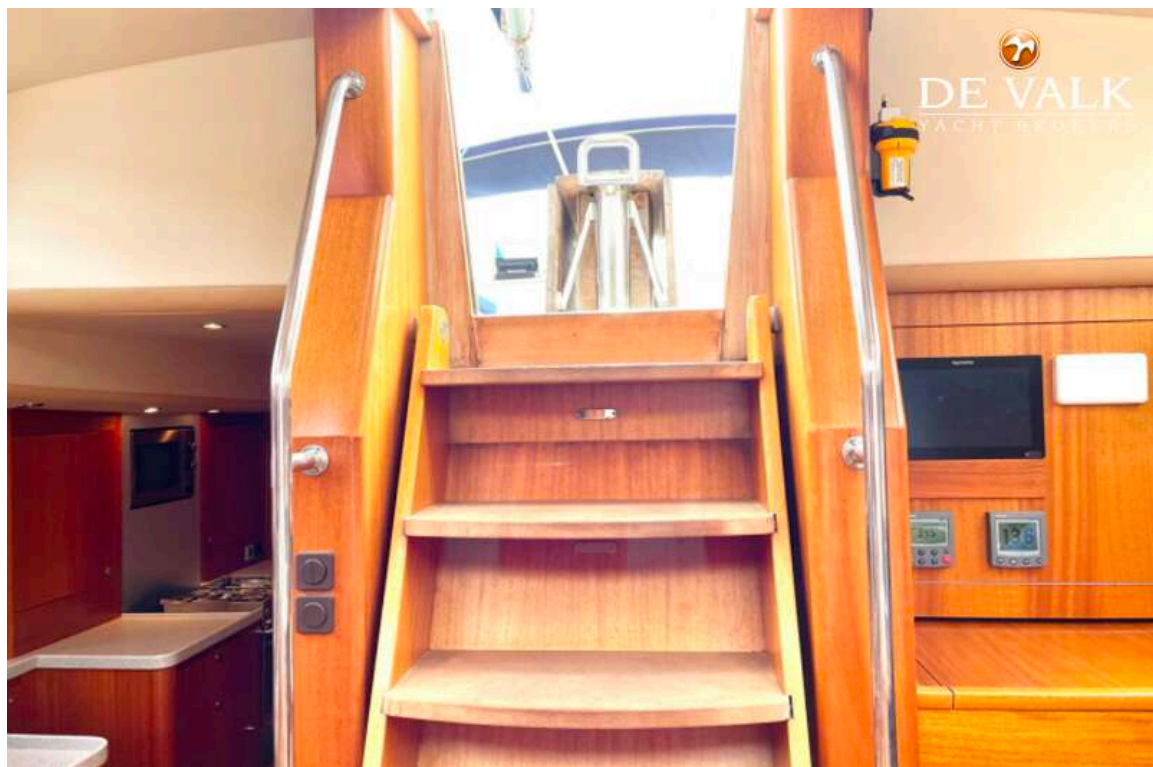




## FARR 525 DECK SALOON

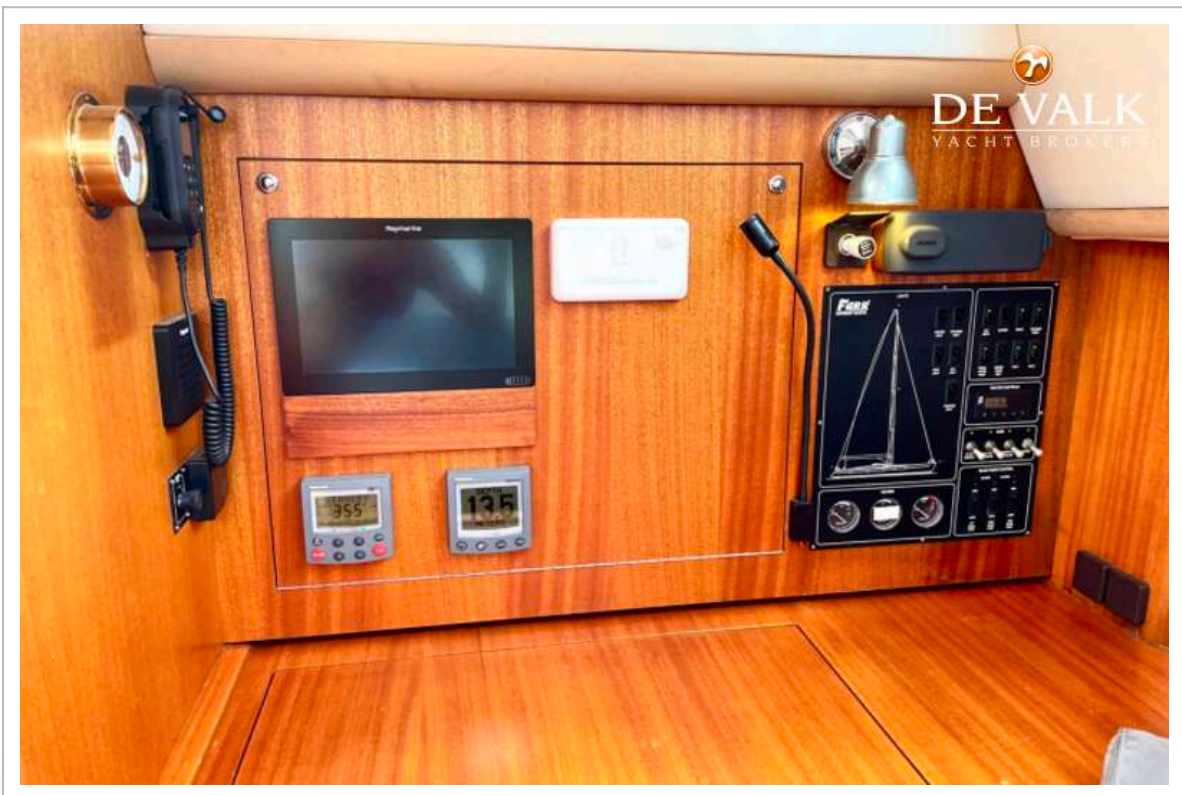


# FARR 525 DECK SALOON





# FARR 525 DECK SALOON



# FARR 525 DECK SALOON

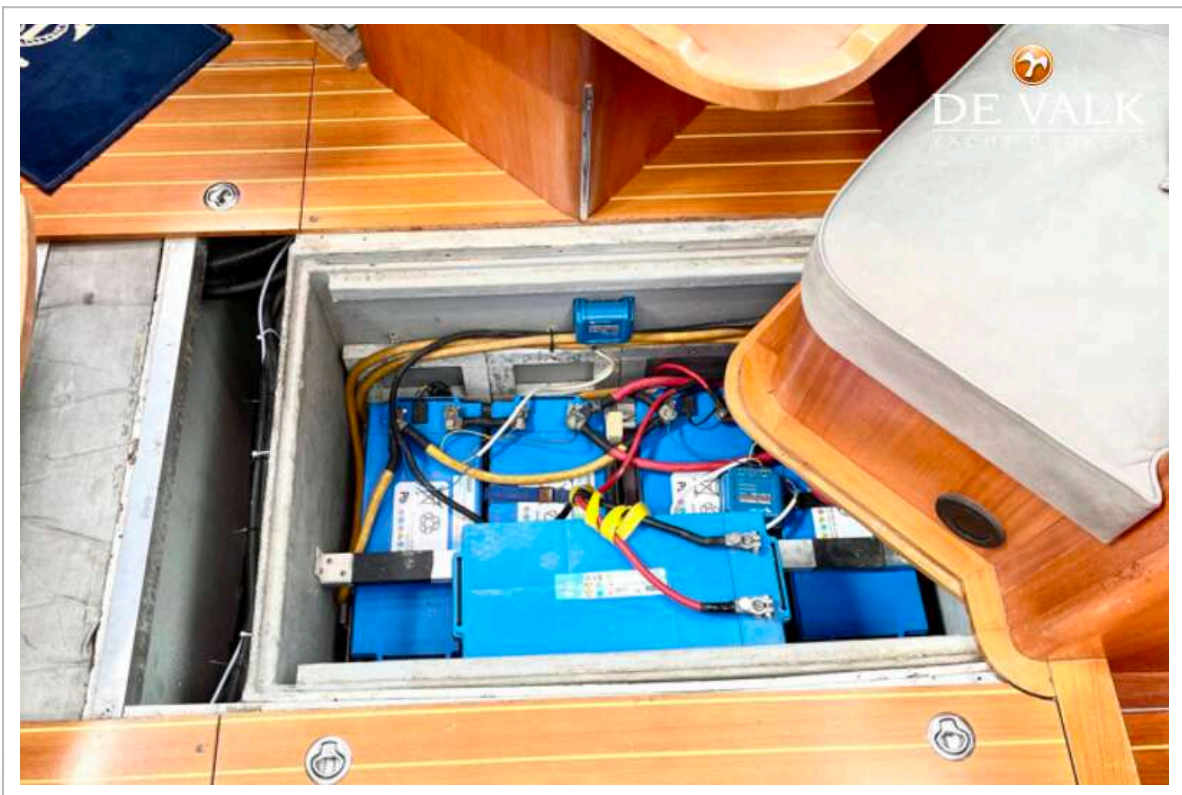




## FARR 525 DECK SALOON



## FARR 525 DECK SALOON





## FARR 525 DECK SALOON

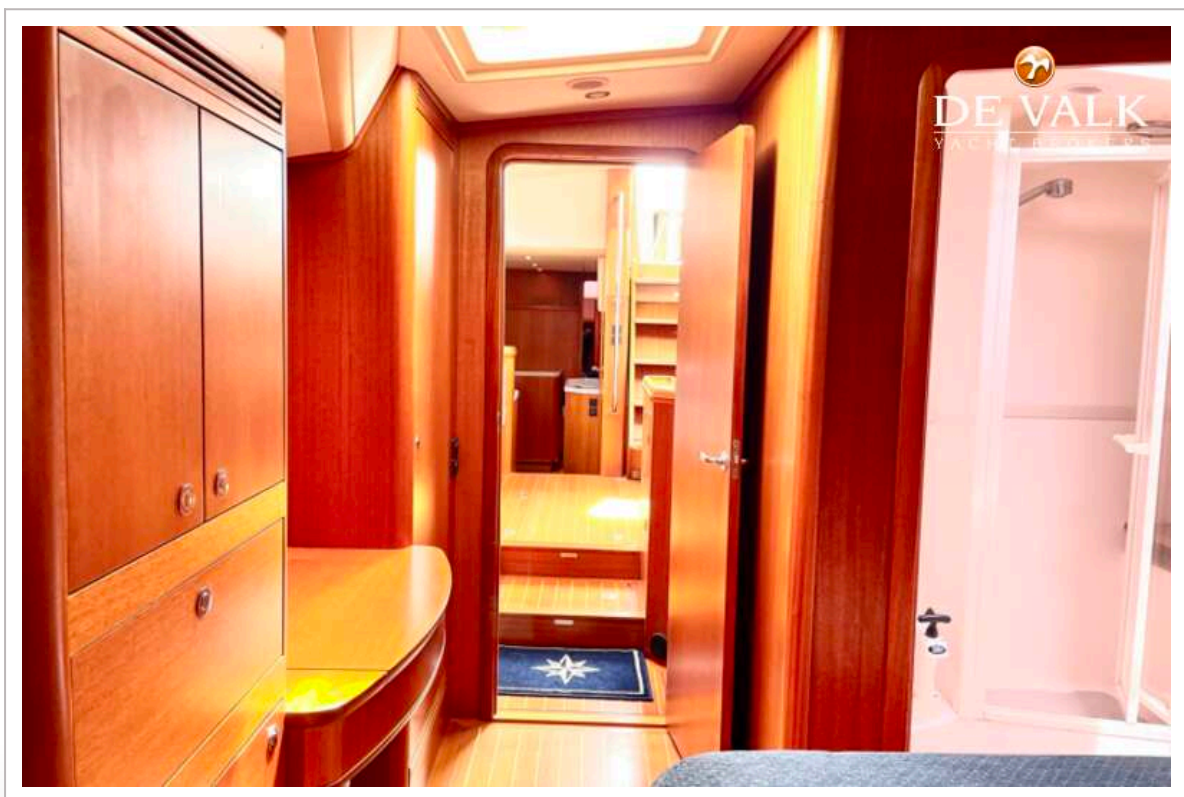
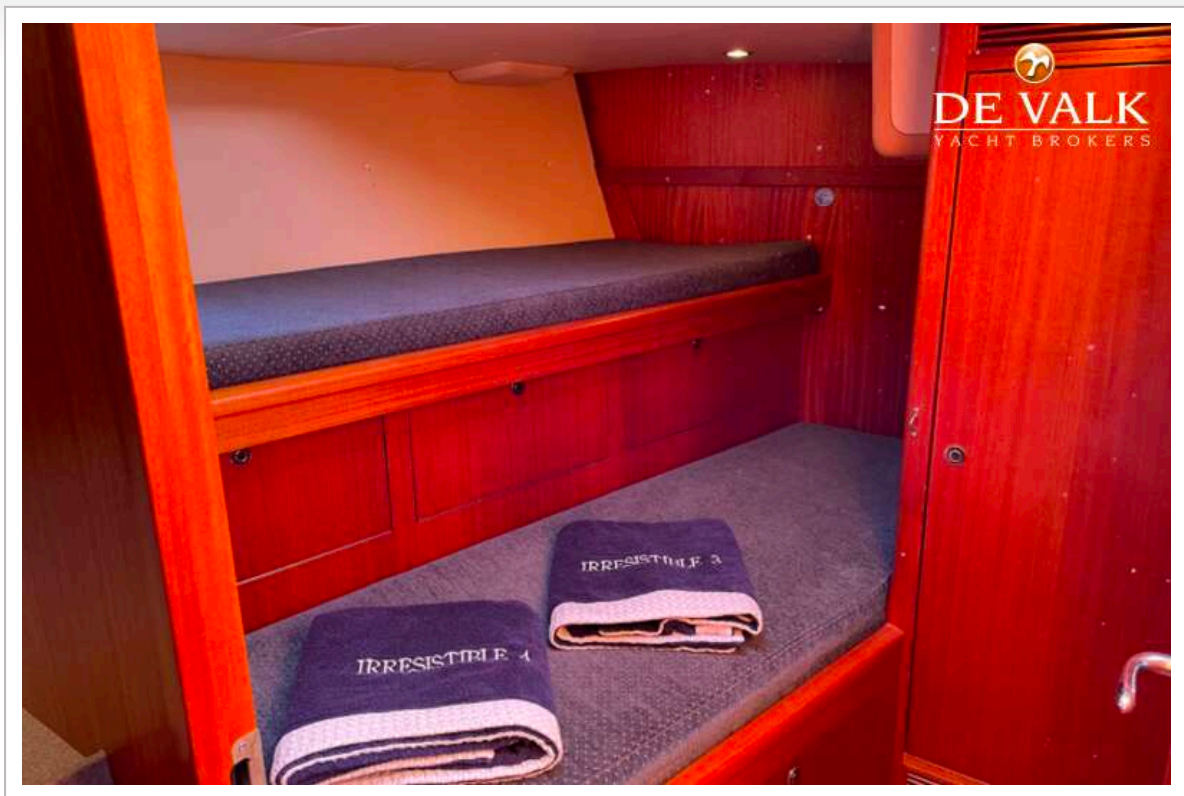


## FARR 525 DECK SALOON





## FARR 525 DECK SALOON



## FARR 525 DECK SALOON

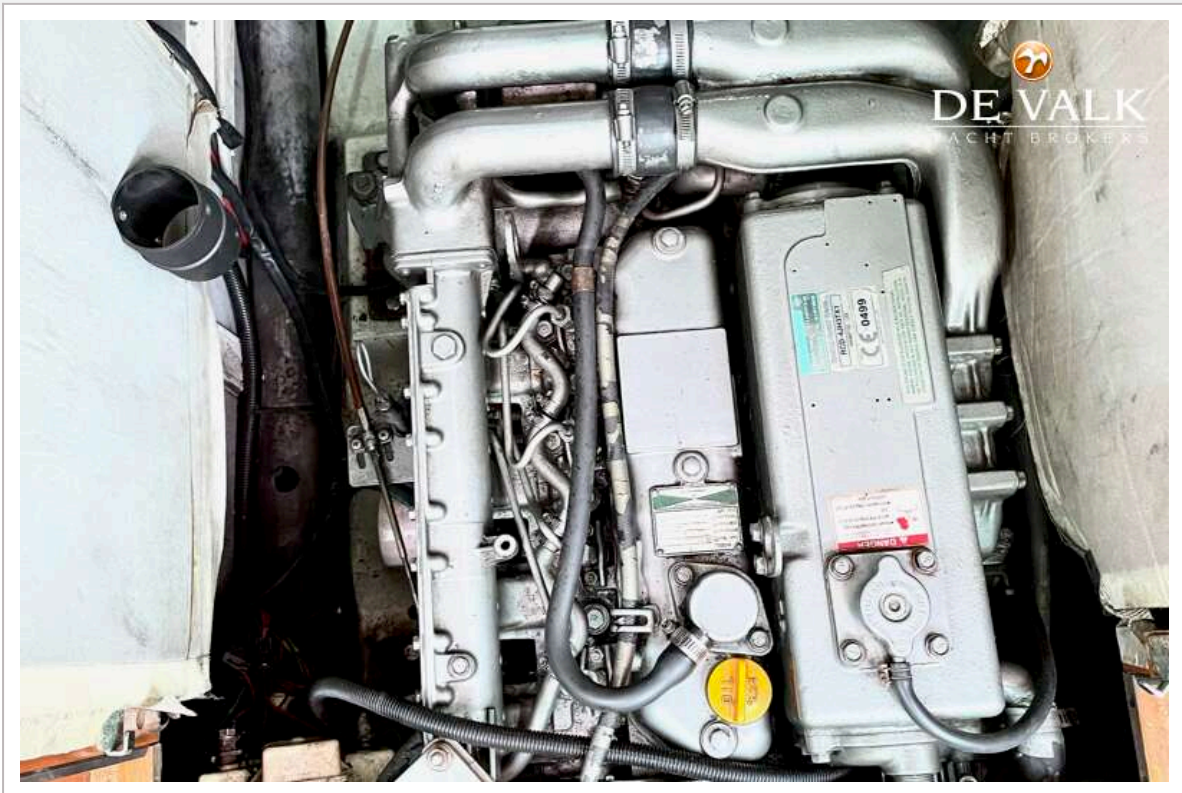




## FARR 525 DECK SALOON



# FARR 525 DECK SALOON



# FARR 525 DECK SALOON

