



DE VALK
YACHT BROKERS



BAVARIA 32 CRUISER



DE VALK
YACHT BROKERS

BAVARIA 32 CRUISER

BROKER'S COMMENTS

The Bavaria 32 Cruiser is designed by the famous Bruce Farr & BMW Design. Their goal; a good all-round design for a wide range of activities - cruising, weekendening, family fun, and club racing. Key points: good sailing characteristics and easy handling, suitable for seasoned and less experienced sailors, seaworthy, safe but also a lot of comfort and space for the family. A good price / quality ratio makes this yacht very popular among everyone who likes to be on the water. For more information, please contact our Monnickendam office.

Sander van der Voorn

SPECIFICATIONS

Dimensions	9.99 x 3.42 x 1.95 (m)	Builder	Bavaria Yachtbau GmbH
Built	2011	Cabins	2
Material	GRP	Berths	6
Engine(s)	1 x Volvo penta MD 2020 diesel	Hp/Kw	19.00 (hp), 13.97 (kw)
Asking price	sold (VAT)	Lying	elsewhere / Not at sales office

CONTACT

Sales office	De Valk Monnickendam B.V.	Telephone	+31 (0)299 65 63 50
Address	Hoogedijk 6 1145 PM Katwoude NL	E-mail	monnickendam@devalk.nl

DISCLAIMER

These particulars are given in good faith as supplied but cannot be guaranteed.



BAVARIA 32 CRUISER

GENERAL

Model	BAVARIA 32 CRUISER
Type	sailing yacht
LOA (m)	9,99
LWL (m)	9,75
Beam (m)	3,42
Draft (m)	1,95
Air draft (m)	14,81
Headroom (m)	1,95
Year built	2011
Launched	yes
Builder	Bavaria Yachtbau GmbH
Country	Germany
Designer	Bruce Farr / BMW Design
Displacement (t)	6,3
Ballast (tonnes)	cast iron 1,3
CE norm	A
Hull material	GRP
Hull colour	white
Hull shape	round-bilged
Keel type	fin keel
Superstructure material	GRP
Rubbing strake	aluminum
Deck material	GRP
Deck finish	non-skid moulded in
Superstructure deck finish	non-skid moulded in
Cockpit deck finish	teak
Antifouling (year)	2019
Window material	polycarbonate
Deckhatch	2
Fuel tank (litre)	polyethylene 150



BAVARIA 32 CRUISER

Level indicator (fuel tank)	Digital
Freshwater tank (litre)	polyethylene 150
Level indicator (freshwater)	Digital
Blackwater tank (litre)	polyethylene 70
Blackwater tank extraction	deck extraction + uw line
Wheel steering	cable steering
Emergency tiller	yes

ACCOMMODATION

Cabins	2
Berths	6
Interior	mahogany
Floor	woodprint
Aft deck	yes
Saloon	yes
Headroom saloon (m)	1,90
Heating	diesel ducted hot air
Chart table	yes
Aft Cabin	yes
Dinette	yes
Opening door to cockpit	yes
Galley	yes
Countertop	corian
Sink	stainless steel
Cooker	calor gas
Oven	yes
Fridge	yes
Hot water system	220V + engine
Water pressure system	electrical
Owners cabin	v-bed
Bed length (m)	2,00



BAVARIA 32 CRUISER

Wardrobe	hanging and shelves
Bathroom	en suite
Toilet	shared
Toilet system	manual
Wash basin	in the bathroom
Shower	shared
Guest cabin 1	double bed
Bed length (m)	2,00
Wardrobe	hanging and shelves

MACHINERY

No of engines	1
Make	Volvo penta
Type	MD 2020
HP	19
kW	13,97
Fuel	diesel
Year installed	2011
Maximum speed (kn)	7
Cruising speed (kn)	6
Consumption (l/hr)	3
Engine hours	1000
Engine cooling system	freshwater heat exchanger
Drive	sail-drive
Engine controls	bowden cable
Gearbox	mechanical
Exhaust	watercooled
Propeller type	fixed
Propeller blades	2
Manual bilge pump	yes
Electric bilge pump	yes



BAVARIA 32 CRUISER

Electrical installation	12/230v
Batteries	3
Start battery	1
Service battery	2
Battery monitor	yes
Battery charger	yes
Shorepower	with cable

NAVIGATION

Compass	yes
Depth sounder/log	Raymarine tri data
Windset	Raymarine Tridata
VHF	yes
Autopilot	yes
Plotter/GPS	Garmin
Navigation lights	yes

EQUIPMENT

Sprayhood	yes
Bimini	yes
Cockpit table	yes
Bathing platform	yes
Boarding ladder	stainless steel
Anchor	Bruce
Anchor chain	yes
Windlass	electrical
Sea railing	wire
Grab rail (superstructure)	stainless steel
Radar reflector	yes
Fenders	6
Mooring lines	yes



BAVARIA 32 CRUISER

Radio-cd player	yes
Speakers in salon	yes
Speakers in cabin	yes
Fire extinguisher	4

RIGGING

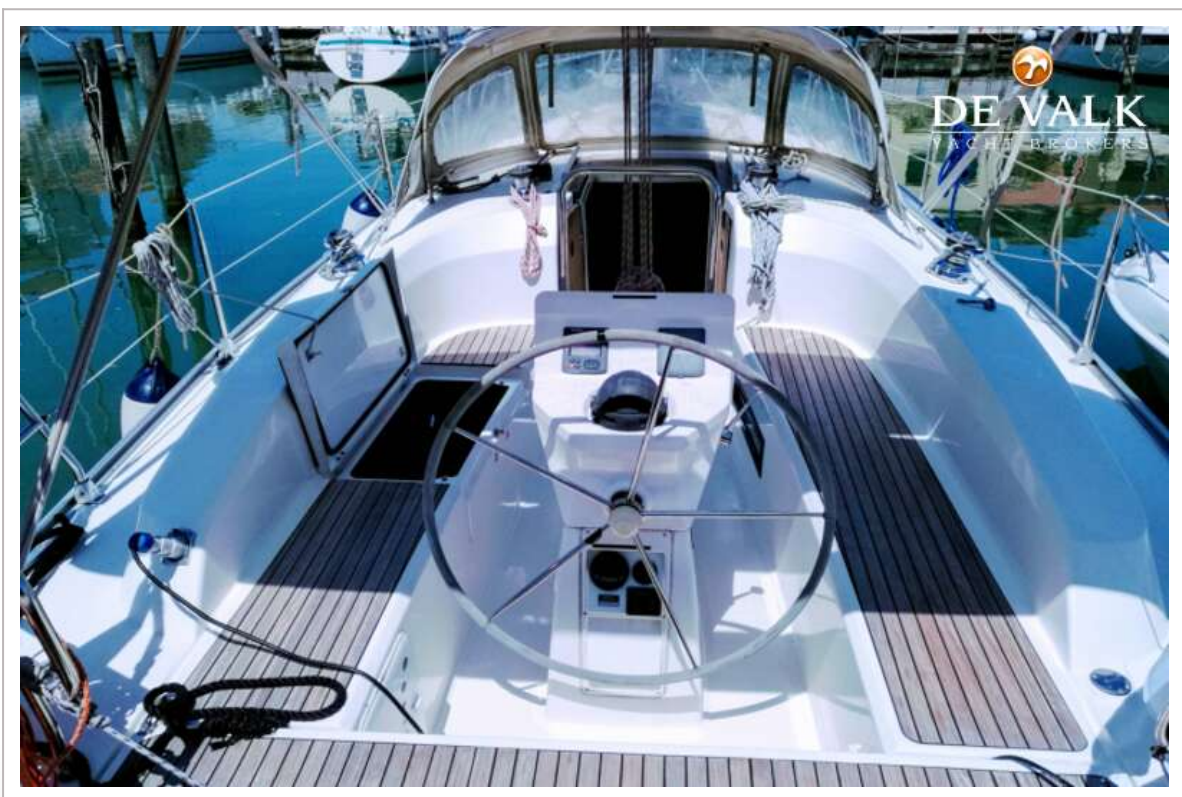
Rigging	sloop 9/10
Standing rigging	wire
Brand mast	Seldén
Material mast	aluminium
Spreaders	2
Mainsail	yes
Mainsail cover	yes
Fully battened mainsail	yes
Genoa	yes
Genoa furler	yes
Reefing System	quick-one-line-reefing
Backstay adjuster	tackle
Boomvang	gasspring
Primary sheet winch	ST30
Secondary sheet winch	ST16
Spi-pole	aluminium



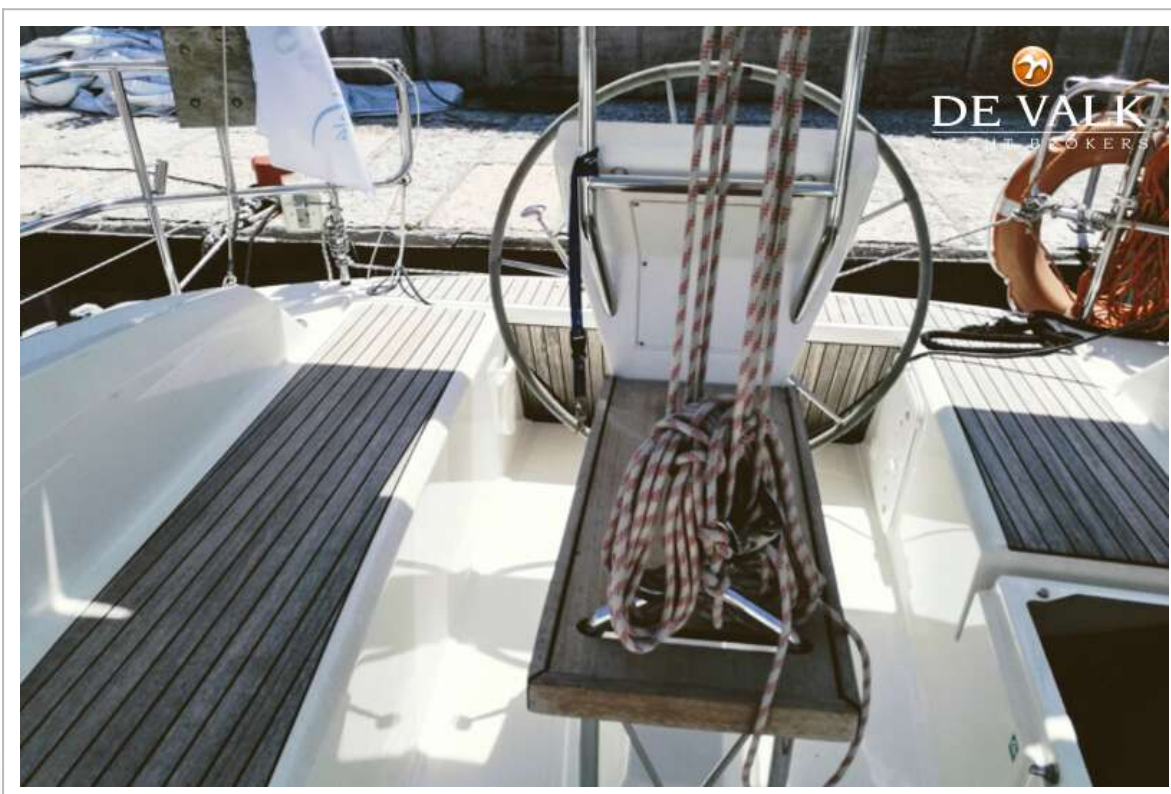
BAVARIA 32 CRUISER



BAVARIA 32 CRUISER



BAVARIA 32 CRUISER



BAVARIA 32 CRUISER



BAVARIA 32 CRUISER



BAVARIA 32 CRUISER



BAVARIA 32 CRUISER



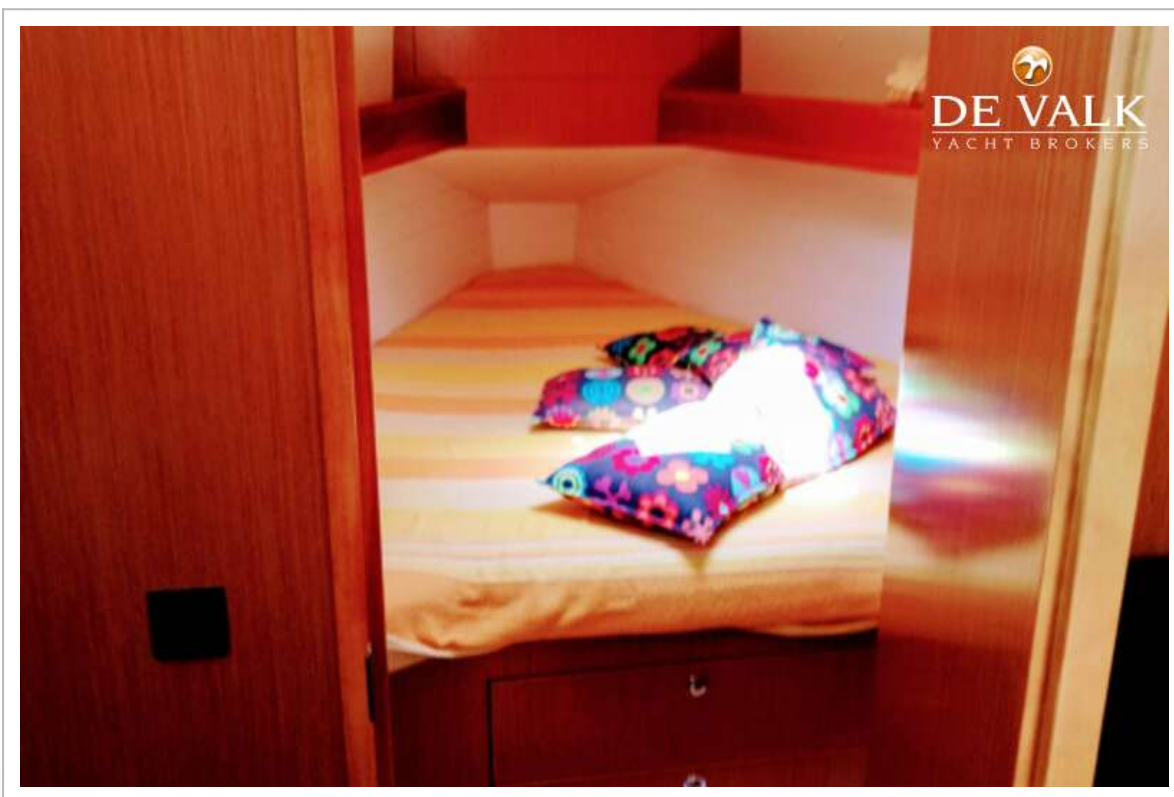
BAVARIA 32 CRUISER



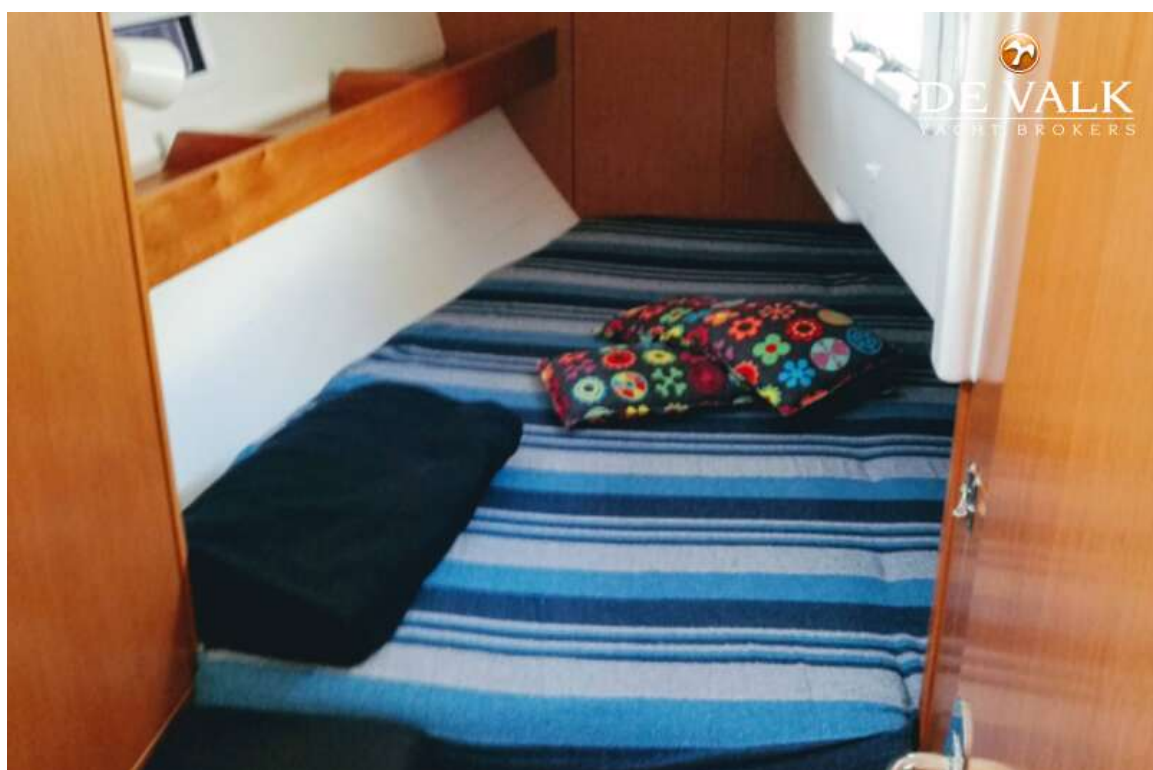
BAVARIA 32 CRUISER



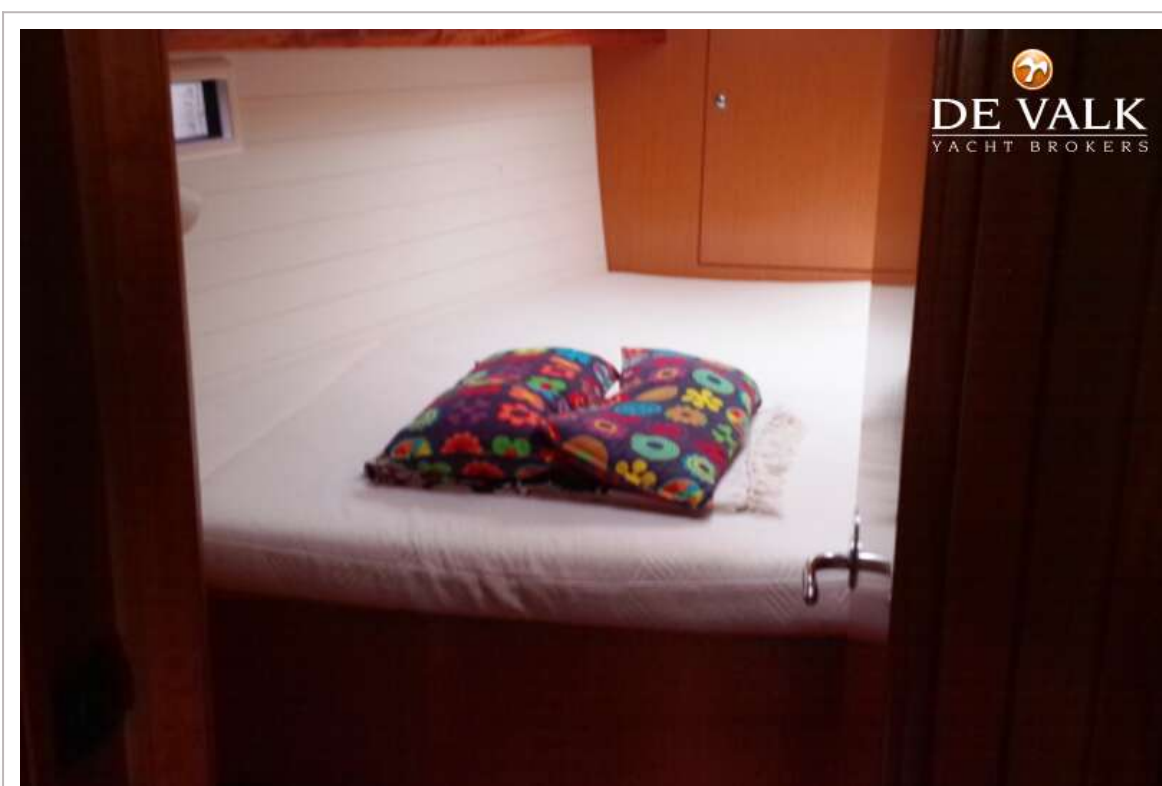
BAVARIA 32 CRUISER



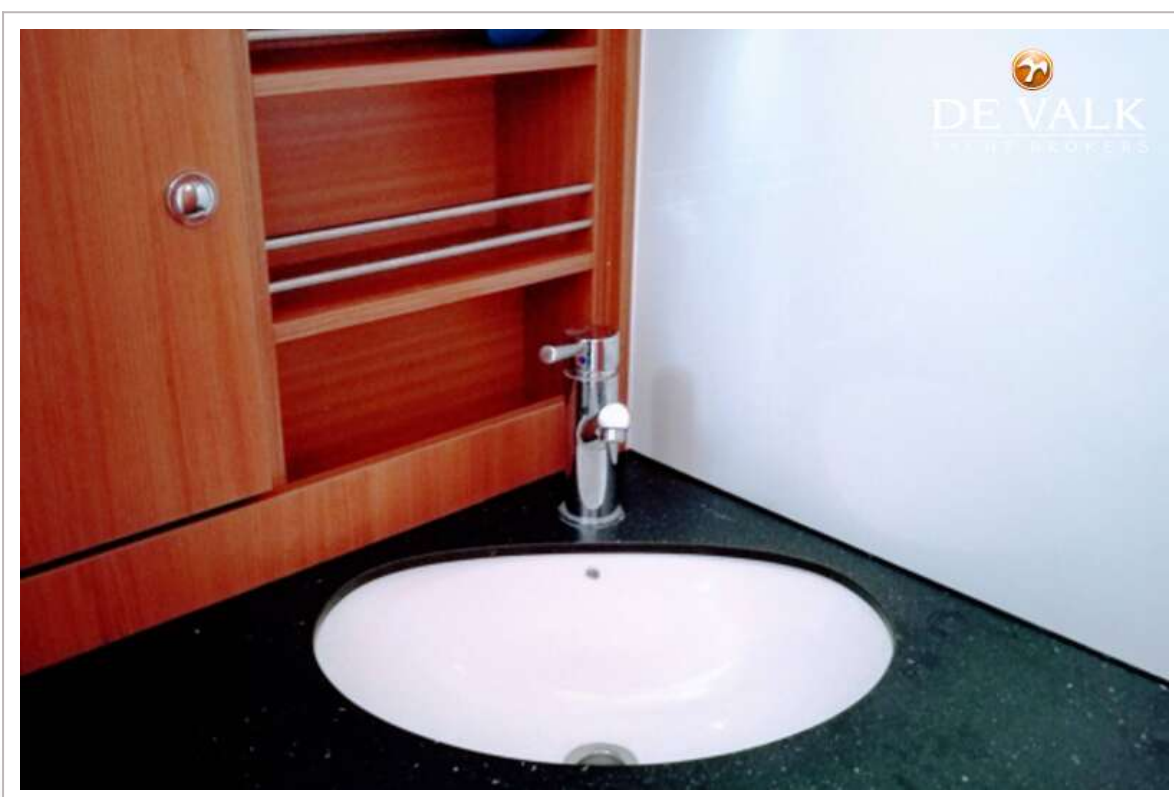
BAVARIA 32 CRUISER



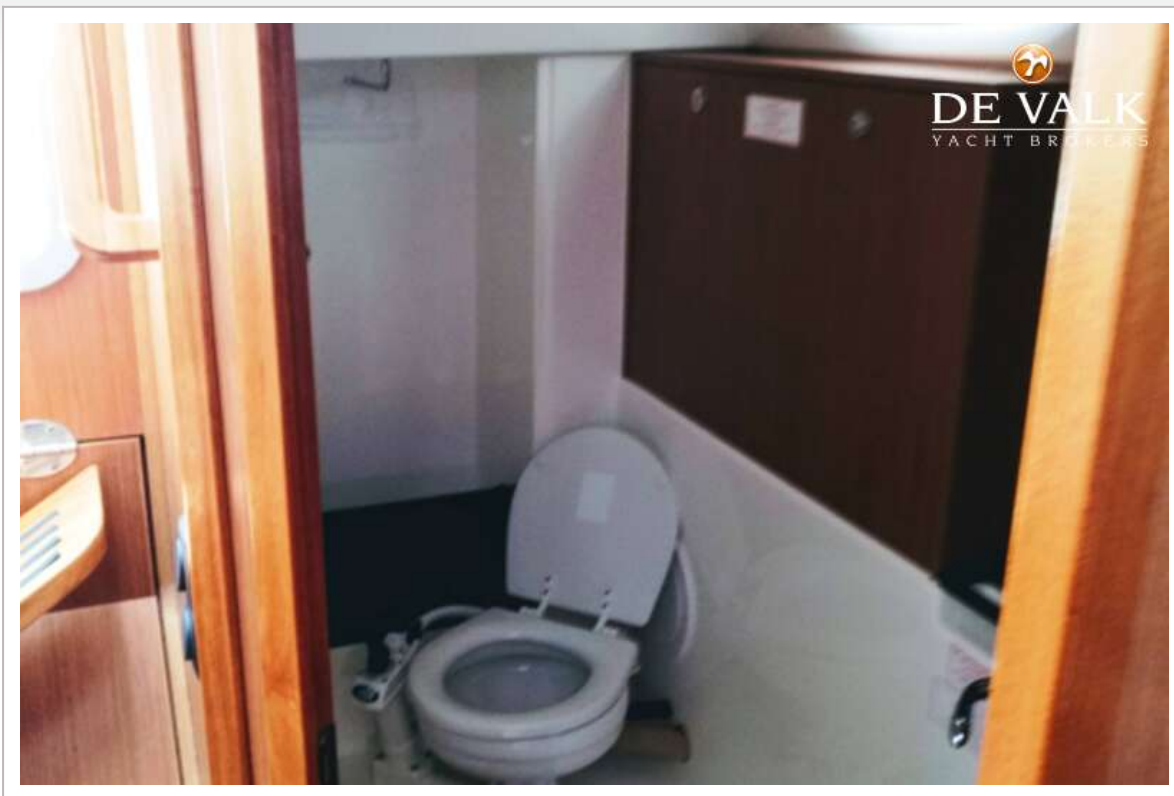
BAVARIA 32 CRUISER



BAVARIA 32 CRUISER



BAVARIA 32 CRUISER



BAVARIA 32 CRUISER

