



DOGGERSBANK 502A



BROKER'S COMMENTS

This Doggersbank 502A is a charming classic Dutch motor yacht from the famous Doggersbank range, designed by Vripack Yachting. With a large flybridge (with bimini) and spacious aft deck this Doggersbank offers a lot of space, inside and outside. This Doggerbank is easily accessible through her sidedecks with opening railings. Twin diesel engines (from 2019) make her very economical and reliable while cruising.

Joris van de Rijt

SPECIFICATIONS

Dimensions	13.00 x 4.13 x 1.20 (m)	Builder	Akerboom-Bergum
Built	1970	Cabins	2
Material	Steel	Berths	5
Engine(s)	2 x Mitsubitshi S4S diesel	Hp/Kw	2 x 63.00 (hp), 46.37 (kw)
Asking price	sold (VAT)	Lying	at sales office

CONTACT

Sales office	De Valk Sint Annaland B.V.	Telephone	+31 (0)166 601 000
Address	Koelhuisweg 4 4697 RM Sint Annaland NL	E-mail	sintannaland@devalk.nl

DISCLAIMER

These particulars are given in good faith as supplied but cannot be guaranteed.



GENERAL

Model	DOGGERSBANK 502A
Type	motor yacht
LOA (m)	13,00
LWL (m)	11,60
Beam (m)	4,13
Draft (m)	1,20
Air draft (m)	3,45
Headroom (m)	1,90
Year built	1970
Builder	Akerboom-Bergum
Country	The Netherlands
Designer	Vripack Yachting
Displacement (t)	16
CE norm	NA
Hull material	steel
Hull colour	blue
Hull shape	round-bilged
Superstructure material	steel
Rubbing strake	steel
Deck material	steel
Deck finish	paint
Superstructure deck finish	paint
Dorades	2 x
Window frame	stainless steel
Window material	glass
Deckhatch	yes
Flybridge	Teak on flybridge needs work
Steadying sail with mast	(defect, not complete and no mast support)
Fuel tank (litre)	steel (liters not known)
Level indicator (fuel tank)	yes



Freshwater tank (litre)	steel (liters not known)
Blackwater tank (litre)	No
Wheel steering	powersteer
Inside helm position	yes
Flybridge helm position	powersteer

ACCOMMODATION

Cabins	2
Berths	5
Interior	mahogany
Floor	wood
Aft deck	yes
Deck saloon	yes
Headroom saloon (m)	1,90
Heating	diesel ducted hot air Airtronic D5
Dinette	yes
Galley	yes
Countertop	plastic
Sink	stainless steel
Cooker	calor gas Smev 3 burner
Oven	Cramer
Extractor	yes
Gas alarm	(defect)
Fridge	Coolmatic
Freezer	Coolmatic (in Fridge)
Hot water system	geyser on Calor Gas Bosch
Water pressure system	electrical
Owners cabin	twin single
Bed length (m)	2 x 1,98 x 0,75
Wardrobe	hanging/drawers/shelves
Bathroom	en suite



Toilet	en suite
Toilet system	electric Jabsco
Wash basin	in the bathroom
Shower	en suite
Guest cabin 1	v-bed
Bed length (m)	1,75
Wardrobe	hanging/drawers/shelves
Toilet	en suite (no toilet installed)
Wash basin	at the toilet

MACHINERY

No of engines	2
Make	Mitsubitshi
Type	S4S
HP	63
kW	46,37
Fuel	diesel
Year installed	2019
Engine hours	213
Engine cooling system	freshwater heat exchanger
Drive	shaft
Engine controls	bowden cable
Gearbox	hydraulic
Bowthruster	electric
Propeller type	fixed
Propeller blades	3
Propeller shaft material	stainless steel
Shaft lubrication	grease
Electric bilge pump	yes
Electrical installation	12v/24v/220v
Start battery	2 x



Service battery	2 x 165 Ah
Battery charger	Victron centaur 24 volt / 30 amp
Shorepower	with cable

NAVIGATION

Depth sounder	Navman fish 350
VHF	Navman VHF 7110
Plotter	Northstar explorer 557
Electronic chart(s)	yes

EQUIPMENT

Bimini	On flybridge
Bathing platform	yes
Boarding ladder	stainless steel
Anchor	Pool
Anchor chain	yes
Windlass	electrical Lofrans Tigres 1500 Watt
Capstan	On windlass
Davits	steel
Davits controls	manual
Sea railing	steel
Railing side opening gates	2 x
Pushpit	yes
Pulpit	yes
Wiper	(Wiper blade needs to be replaced)
Clearview window	yes
Horn	electric
Fenders	yes
Mooring lines	yes
TV	Finlux
Radio-cd player	Pioneer



Speakers in salon

yes

Clock - barometer

yes





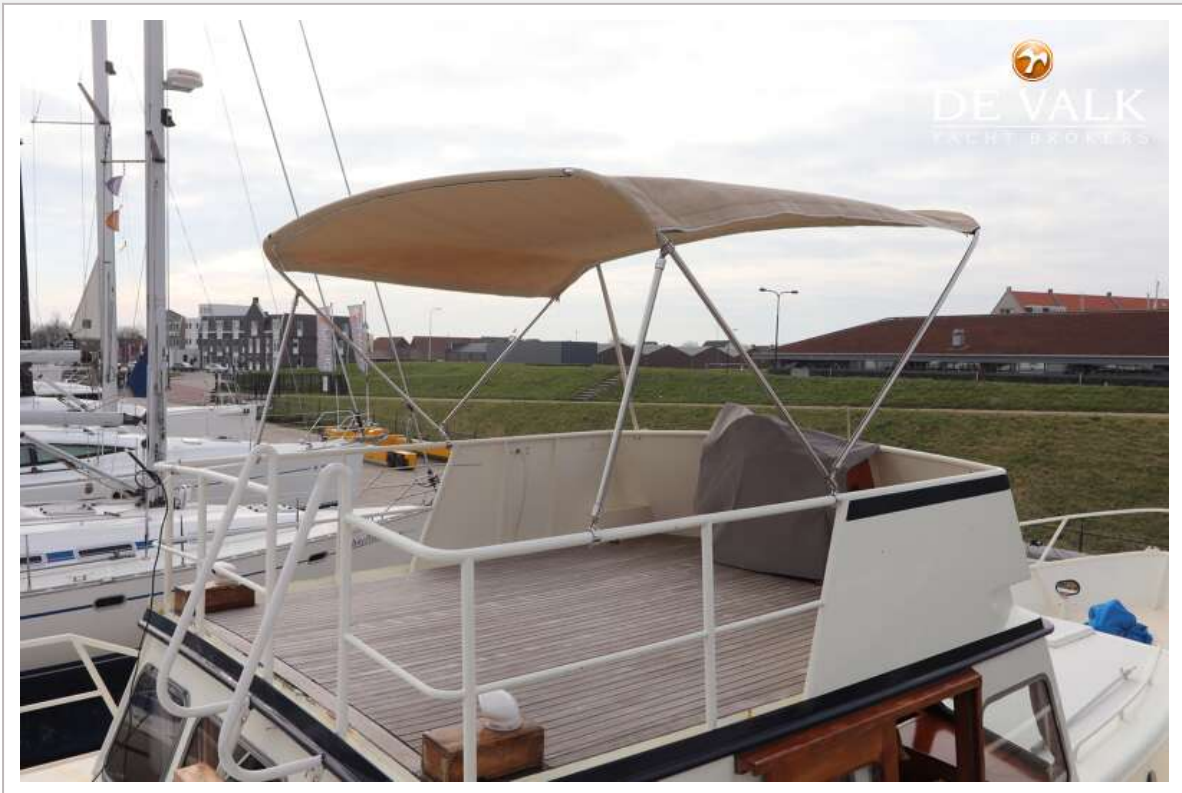
DOGGERSBANK 502A



DOGGERSBANK 502A



DOGGERSBANK 502A



DOGGERSBANK 502A



DOGGERSBANK 502A



DOGGERSBANK 502A



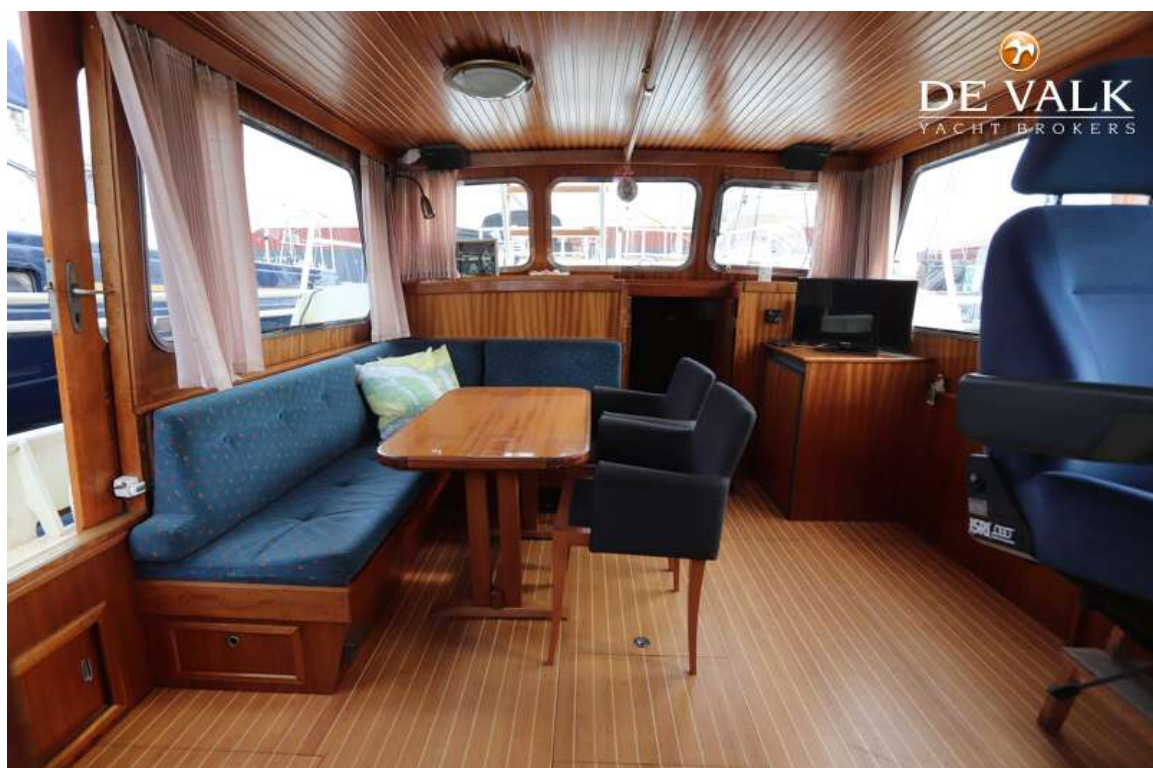
DOGGERSBANK 502A



DOGGERSBANK 502A



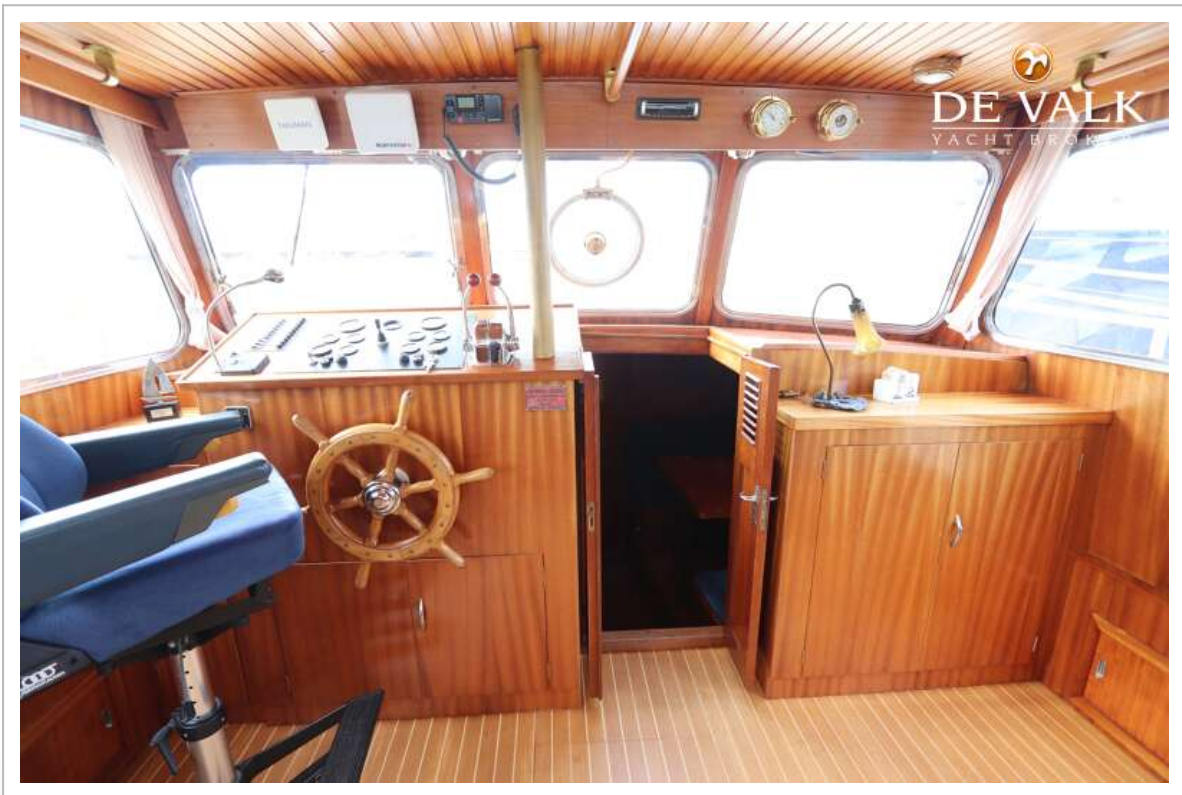
DOGGERSBANK 502A



DOGGERSBANK 502A



DOGGERSBANK 502A



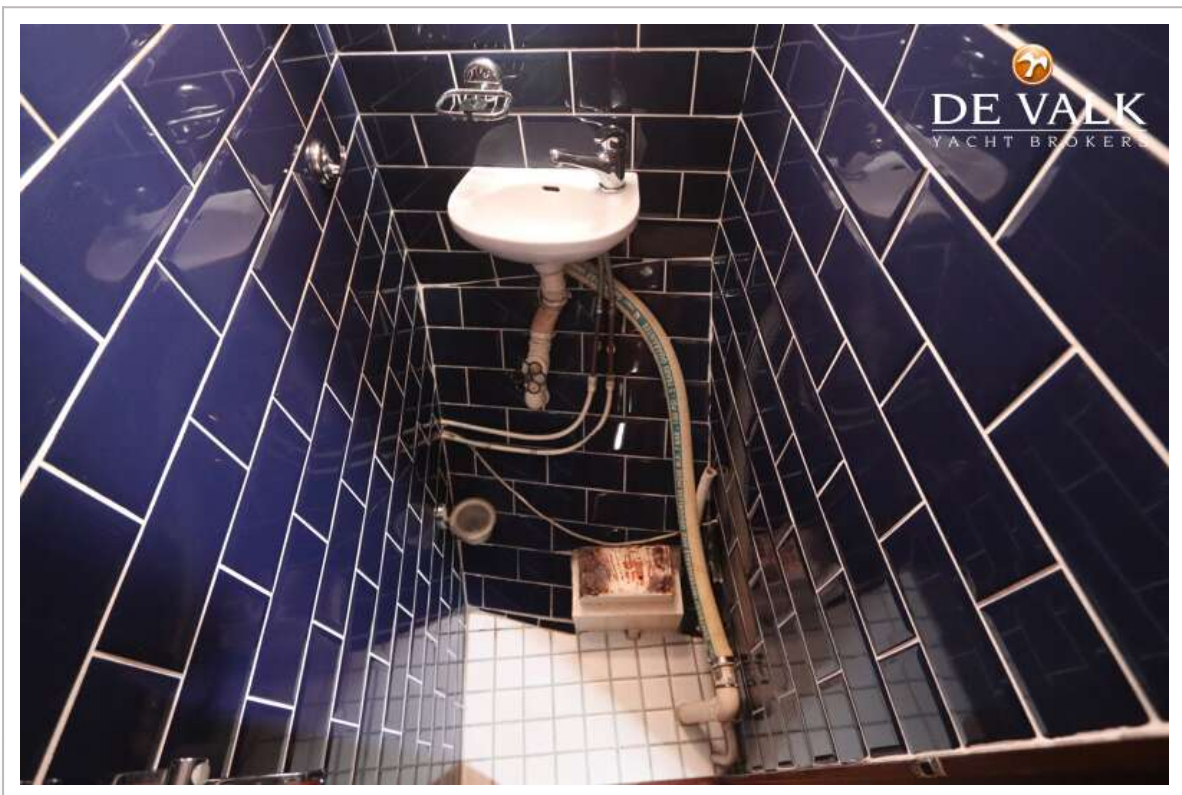
DOGGERSBANK 502A



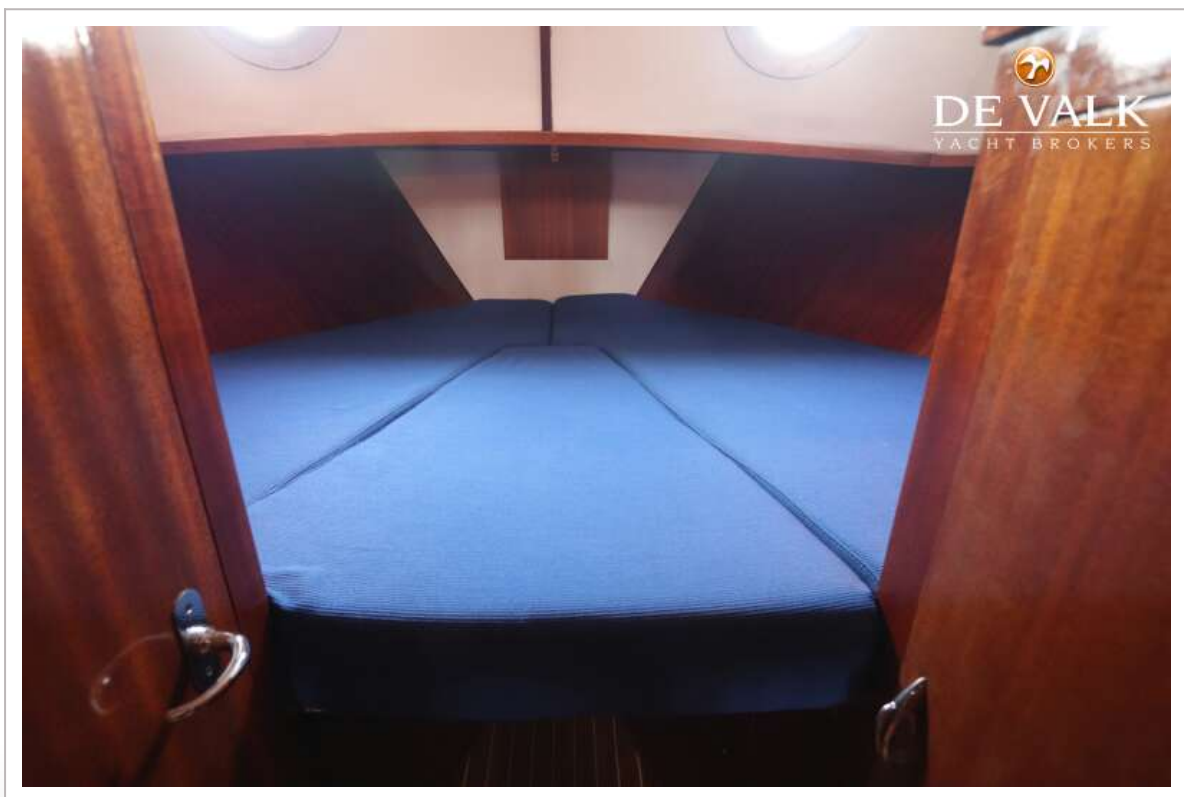
DOGGERSBANK 502A



DOGGERSBANK 502A



DOGGERSBANK 502A

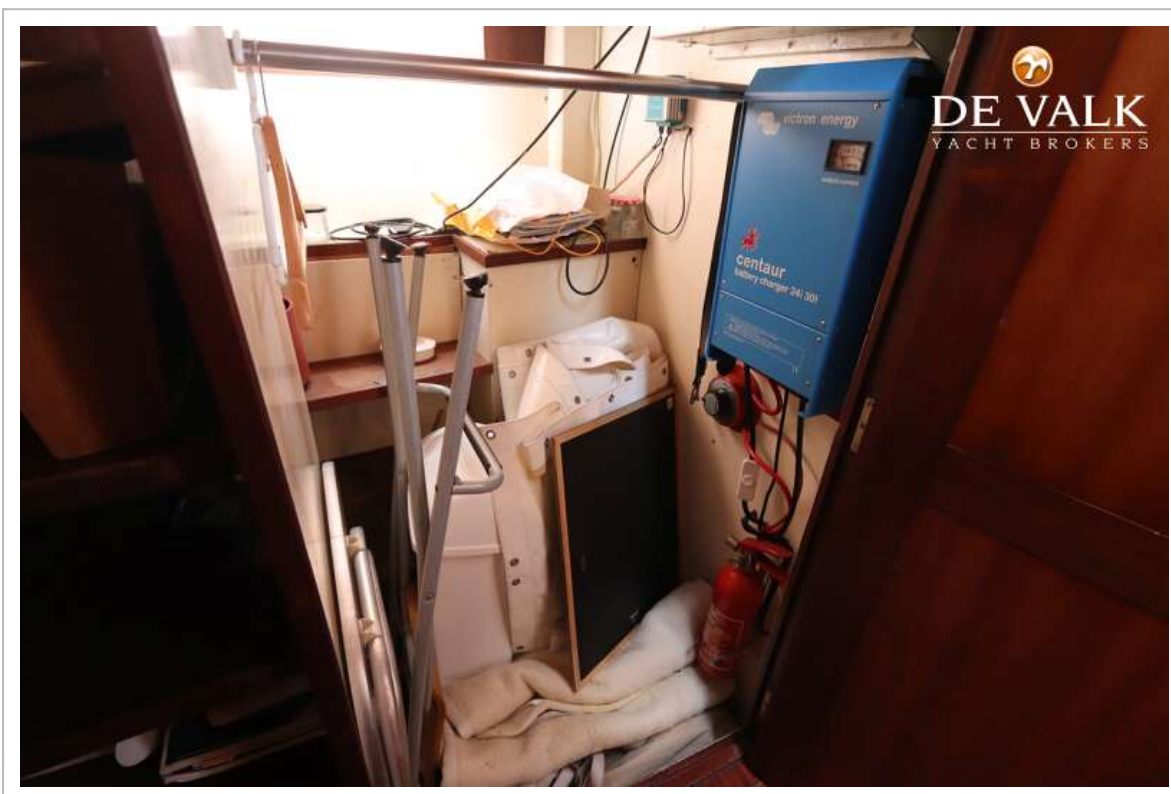
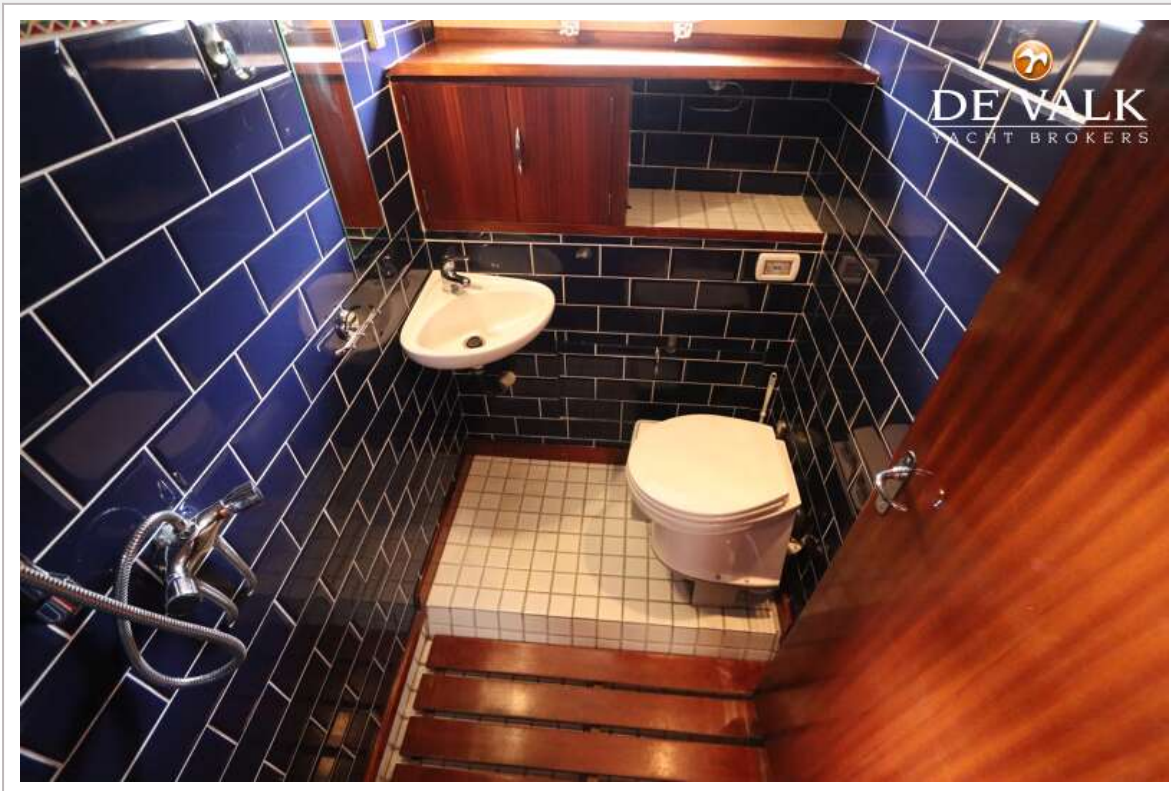


DOGGERSBANK 502A



DOGGERSBANK 502A







DOGGERSBANK 502A

