



DE VALK  
YACHT BROKERS



## SHARQ TRAVELLER QROOZ



DE VALK  
YACHT BROKERS

## BROKER'S COMMENTS

This steel Sharq Traveller Qrooz is built as a professional river boat, an interior as an apartment and sailing as a big easy maneuverable yacht. With two modern Steyr engines and a 20Kw bow thruster she can be sailed from Scandinavia to the south of France. Also, very good for living onboard with an open aft cockpit and a very nice upper cockpit on the roof of the vessel from where you can steer and sit with many people outside. In the hands of the second owner lying in Antwerpen ready for a viewing, just call us for an appointment.

*Ger Bayens*

## SPECIFICATIONS

<b>Dimensions</b>	23.85 x 5.00 x 1.20 (m)	<b>Builder</b>	Shipyard Begej
<b>Built</b>	2011	<b>Cabins</b>	3
<b>Material</b>	Steel	<b>Berths</b>	5
<b>Engine(s)</b>	2 x Steyr MO114 K33 diesel	<b>Hp/Kw</b>	2 x 110.00 (hp), 80.85 (kw)
<b>Asking price</b>	sold (VAT )	<b>Lying</b>	elsewhere / Not at sales office

## CONTACT

<b>Sales office</b>	De Valk Thuishaven	<b>Telephone</b>	+31 35 5829042
<b>Address</b>	Peperstraat 7 1411 PX Naarden NL	<b>E-mail</b>	thuishaven@devalk.nl

## DISCLAIMER

These particulars are given in good faith as supplied but cannot be guaranteed.



# SHARQ TRAVELLER QROOZ

## GENERAL

Model	SHARQ TRAVELLER QROOZ
Type	motor yacht
LOA (m)	23,85
Beam (m)	5,00
Draft (m)	1,20
Air draft (m)	3,45
Headroom (m)	2,04
Year built	2011
Builder	Shipyards Begej
Country	Serbia
Designer	Groenendijk & Shipyards Begej
Displacement (t)	110
CE norm	C
Hull material	steel
Hull colour	blue Light bleu
Hull thickness (mm)	Grade A 10/9/7
Hull shape	multi hard chine
Superstructure material	steel
Rubbing strake	rubber Trelleborg CF-A
Deck finish	synthetic teak Marine Deck
Superstructure deck finish	paint
Cockpit deck finish	synthetic teak Marine Deck
Antifouling (year)	yes
Window frame	aluminium
Window material	double glazing
Portholes	yes
Insulation	Merford Polyester wool
Flybridge	over the engine /steering control unit
Mast can be lowered	yes
Fuel tank (litre)	steel 2x 1500



# SHARQ TRAVELLER QROOZ

Level indicator (fuel tank)	electronical & visual
Freshwater tank (litre)	steel 6000 with Wyckomar fresh water and filter system with auv filter
Blackwater tank (litre)	stainless steel 100
Wheel steering	cable steering
Inside helm position	time-and path dependent steering system with curves pointer
Extra info	Painted (2018)
Extra info	Ventilation unit Litho

## ACCOMMODATION

Cabins	3
Berths	5
Interior	birch
Floor	carpet
Open cockpit	yes
Aft deck	yes
Deck saloon	yes
Saloon	yes
Headroom saloon (m)	2,04
Heating	central heating Kabola 19,5 HR 500
Navigation center	yes
Chart table	yes
Dinette	yes
Sliding door to cockpit	yes
Galley	Bulthaup
Countertop	stainless steel
Sink	stainless steel
Cooker	Siemens Ceramic
Oven	steam oven with extra heating stove. Siemens Compac 45
Microwave	220V
Fridge	Siemens 308 ltr



# SHARQ TRAVELLER QROOZ

Freezer	Siemens 100 ltr
Hot water system	220V + engine Daaldrop Boiler 80 ltr 230/400V
Water pressure system	electrical
Dishwasher	Siemens Speedmatic
Owners cabin	French bed
Wardrobe	hanging/drawers/shelves
Bathroom	separate
Toilet	en suite
Toilet system	electric
Wash basin	in the bathroom
Shower	en suite
Guest cabin 1	French bed
Bed length (m)	2,00 x 1,60
Wardrobe	hanging/drawers/shelves
Bathroom	en suite
Toilet	en suite
Toilet system	manual
Wash basin	in the bathroom
Shower	separate
Guest cabin 2	single bed
Bed length (m)	2,0 x 1,40
Wardrobe	hanging/drawers/shelves
Bathroom	separate
Toilet	en suite
Toilet system	electric
Wash basin	in the bathroom
Shower	separate
Extra info	vent system Central Air

## MACHINERY

No of engines	2
---------------	---



# SHARQ TRAVELLER QROOZ

<b>Make</b>	Steyr
<b>Type</b>	MO114 K33
<b>HP</b>	110
<b>kW</b>	80,85
<b>Fuel</b>	diesel
<b>Year installed</b>	2011
<b>Maximum speed (kn)</b>	8,5
<b>Cruising speed (kn)</b>	6
<b>Consumption (l/hr)</b>	20
<b>Engine hours</b>	650
<b>Engine cooling system</b>	closed keelcooling
<b>Drive</b>	shaft
<b>Shaft seal</b>	yes
<b>Engine controls</b>	electrical
<b>Gearbox</b>	hydraulic 2x ZF 45-1, 3,03:1
<b>Engine controls</b>	bowden cable
<b>Bowthruster</b>	electric Leeuwenstijn 20Kw 96V
<b>Thrust bearing</b>	Aqua Drive CVB 21
<b>Propeller type</b>	fixed EP4B, Bronze, 20 Inch
<b>Propeller blades</b>	5
<b>Propeller shaft material</b>	stainless steel
<b>Shaft lubrication</b>	yes
<b>Manual bilge pump</b>	2x Jabsco
<b>Electric bilge pump</b>	2x Jabsco 24V
<b>Bilge alarm</b>	yes
<b>Electrical installation</b>	12/24/230/400
<b>Generator</b>	Mitsubishi S4L2 13,5
<b>Batteries</b>	2x 48 Volt 350 Ah
<b>Start battery</b>	2x 200 Ah
<b>Service battery</b>	1350 Ah Tractie set
<b>Generator battery</b>	yes
<b>Bowthruster battery</b>	16x 6V/350 Ah



Battery monitor	15 inch screen
Battery charger	Back up charger 75
Battery charger/inverter	2x combi charger/invertor 48V/3000W 40Ah, 2x Studer Combi 24/1 A
Solar panel	6x Suntech STP 200 9m2
Diode battery combiners	yes
Shorepower	with cable 230/400

## NAVIGATION

Depth sounder	2x Raymarine
Autopilot	Radio Holland Sigma 500 river autopilot
Rudder angle indicator	yes
Radar	Raymarine Daylight
GPS	Raymarine
Personal computer	Touch screen control panel
Camera	yes
Navigation lights	yes
Searchlight	yes

## EQUIPMENT

Cockpit cushions	yes
Cockpit chairs	yes
Bathing platform	yes
Boarding ladder	stainless steel
Transom door	yes
Gangway	yes
Deck shower	yes
Anchor	Pool 75 Kg
Anchor chain	30 mtr 13mm
Windlass	electrical Lowrance TITAN A
Deck wash	Koshi 24V/100ltr/min.



Deck crane	electric 300 kg
Sea railing	yes
Lifebuoy	yes
Wiper	2x
Horn	electric
Spare parts	yes
TV	yes
Radio-cd player	yes
Speakers in salon	yes
Fire extinguisher	yes
Latest extinguisher survey	Unknown
Extinguisher in engine room	yes
Auto extinguisher system	yes



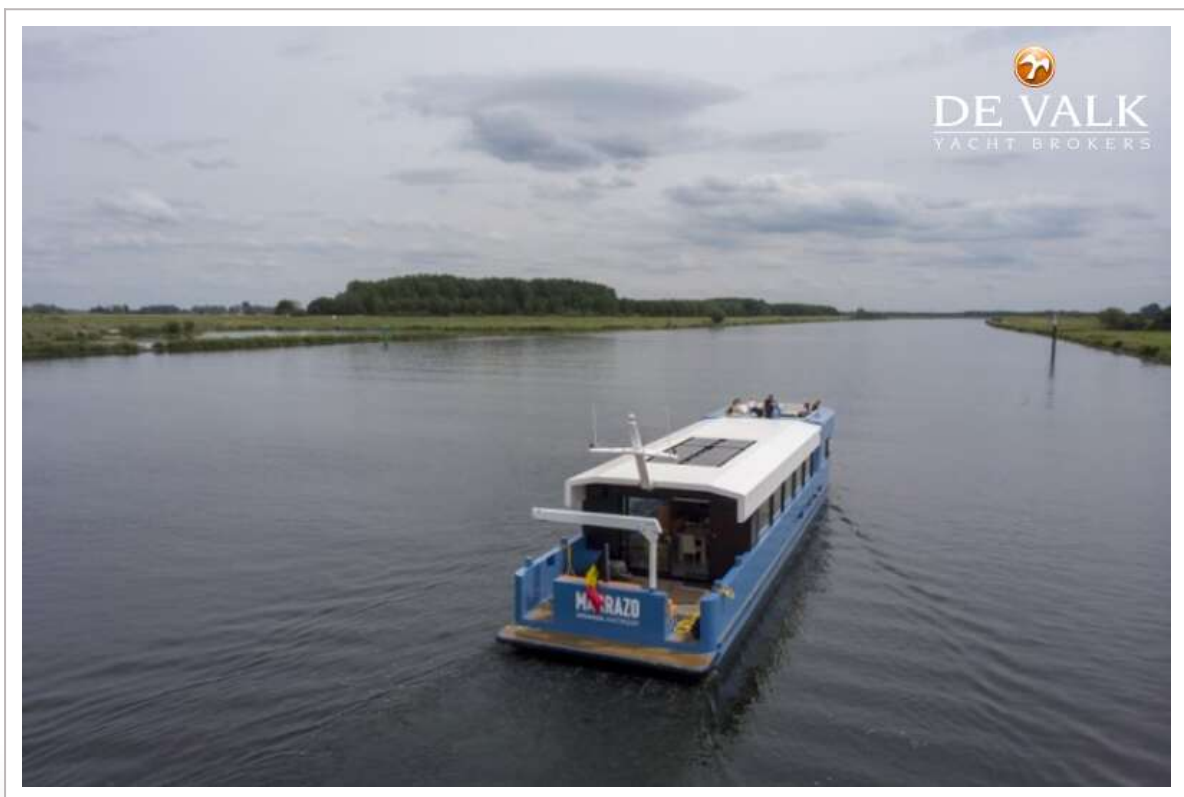




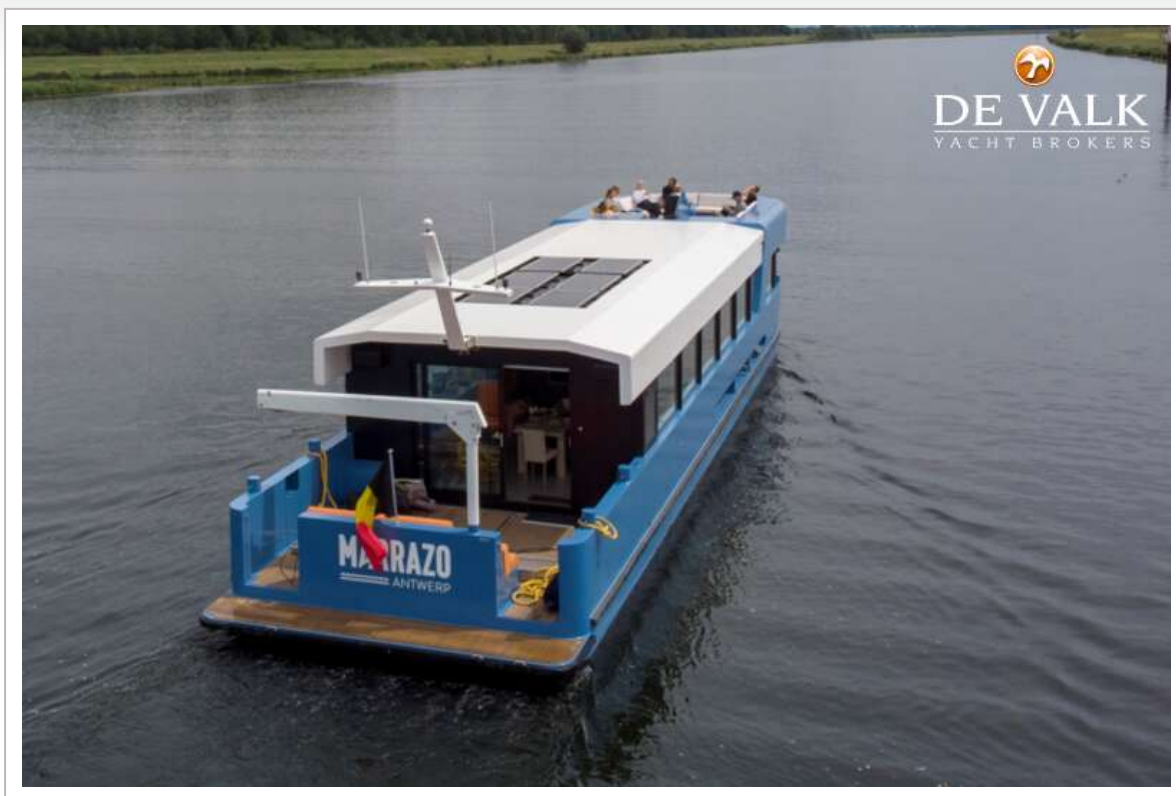
# SHARQ TRAVELLER QROOZ



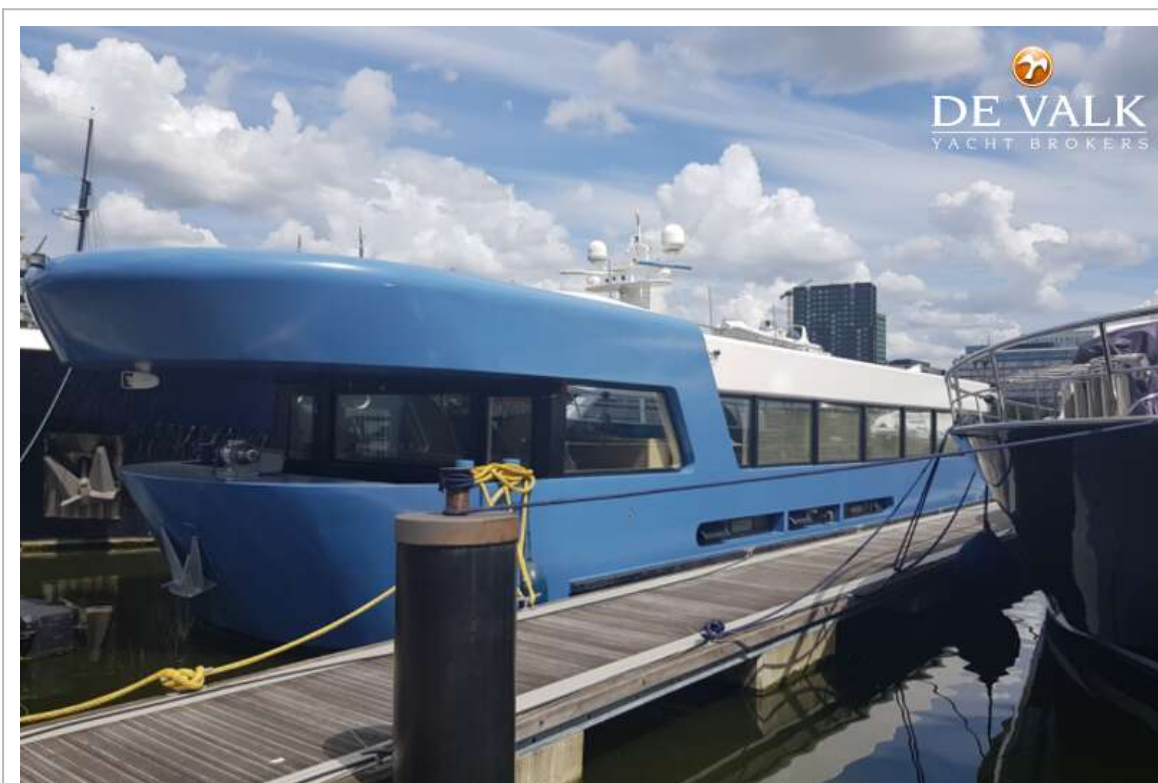




# SHARQ TRAVELLER QROOZ



# SHARQ TRAVELLER QROOZ





**DE VALK**  
YACHT BROKERS



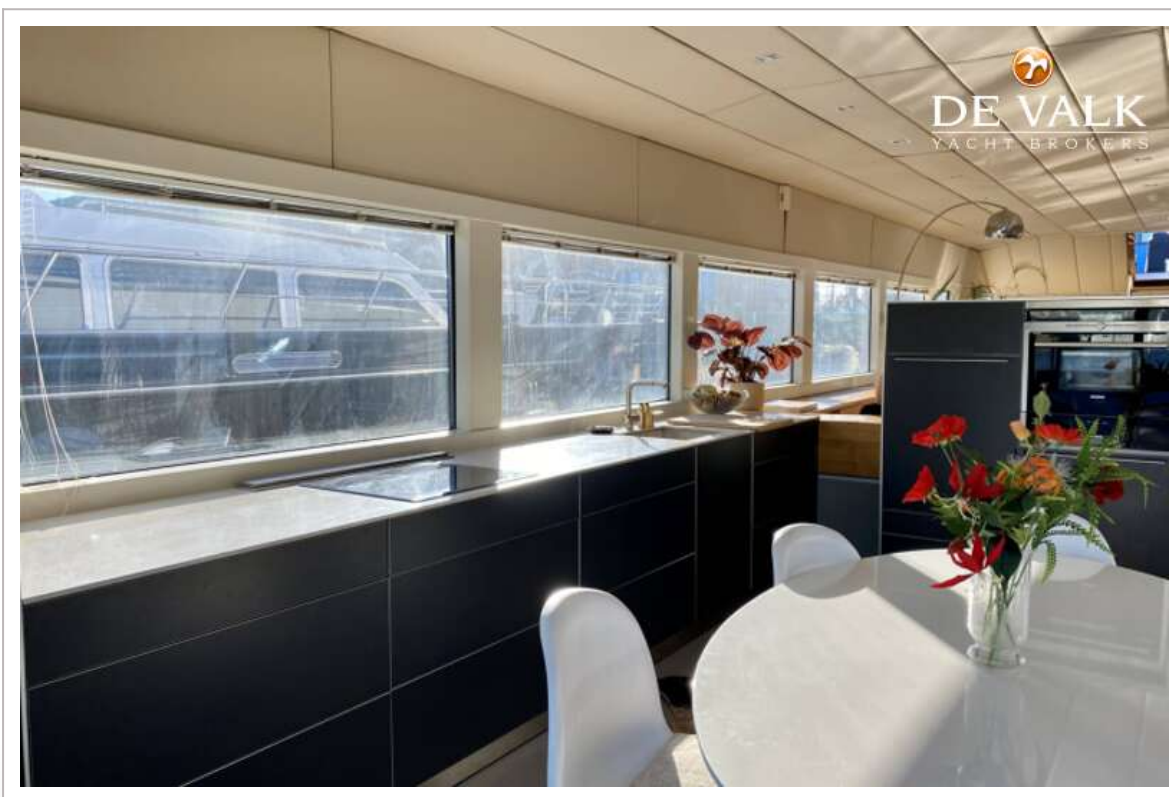
Binnenkort meer foto's op onze website

Mehr Bilder auf unserer Website in Kürze

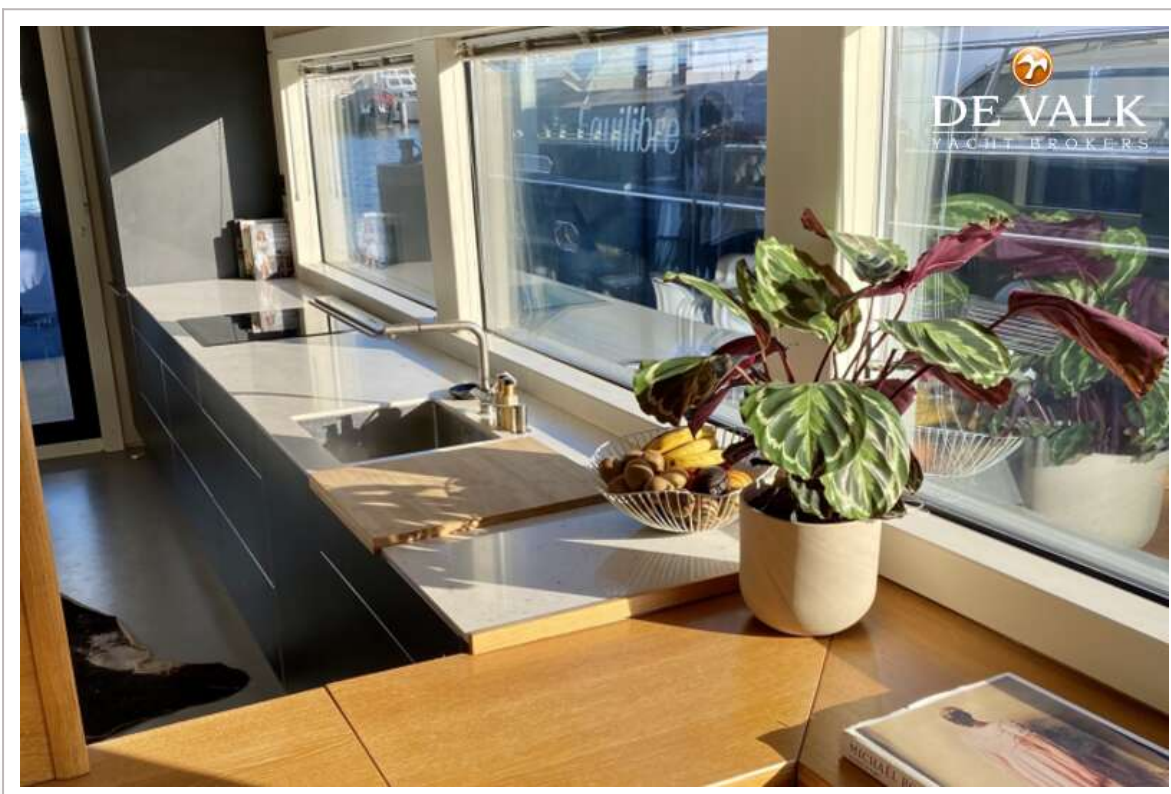
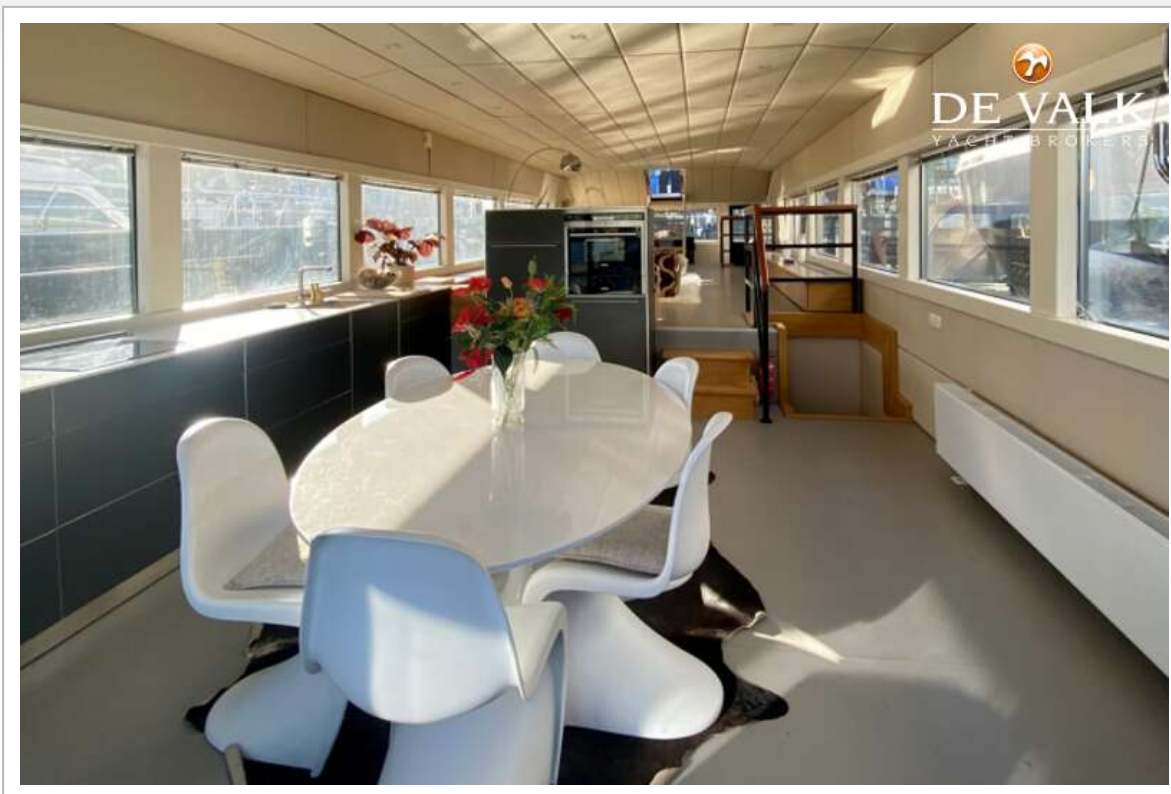
More picture's on our web site soon



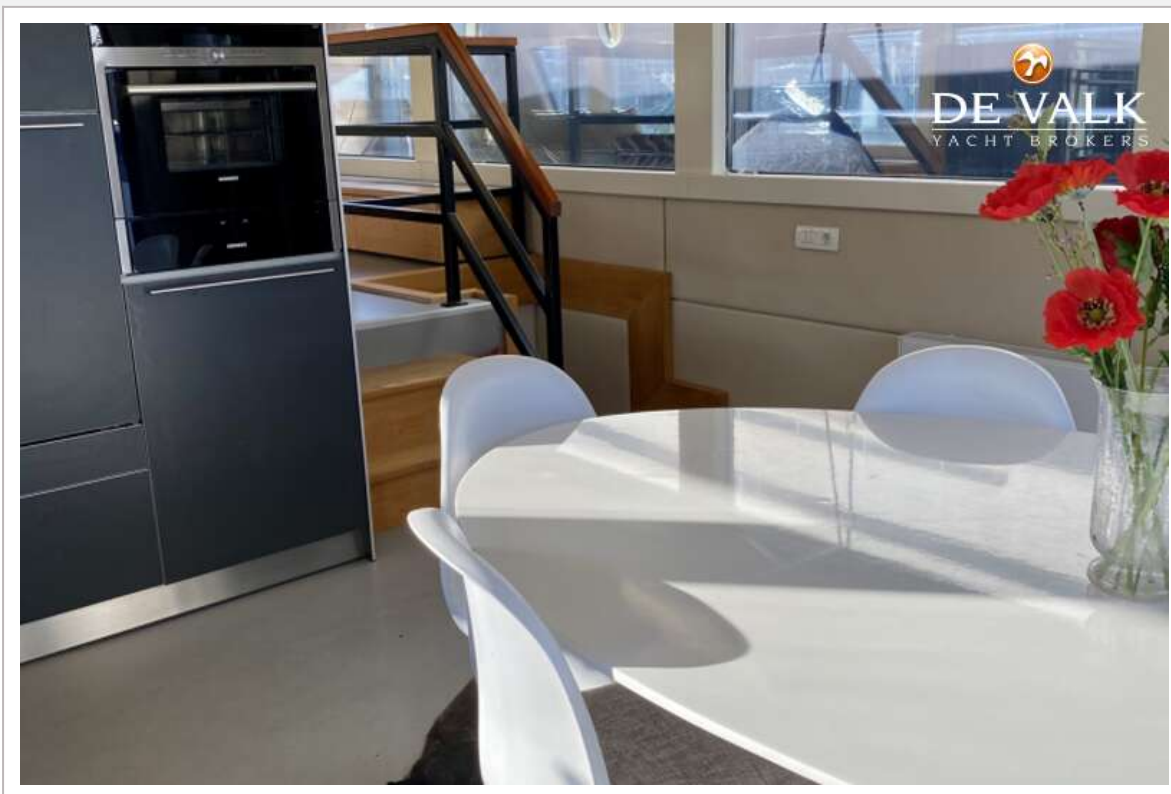
# SHARQ TRAVELLER QROOZ



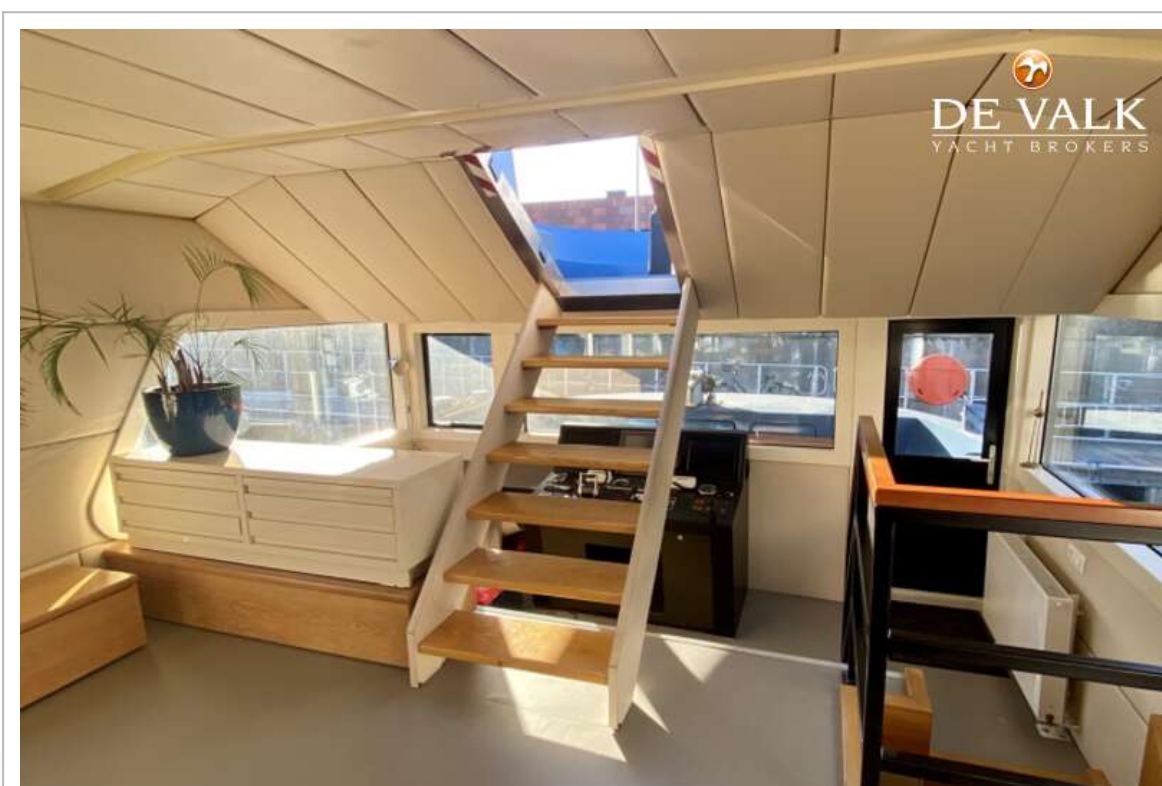
# SHARQ TRAVELLER QROOZ



# SHARQ TRAVELLER QROOZ



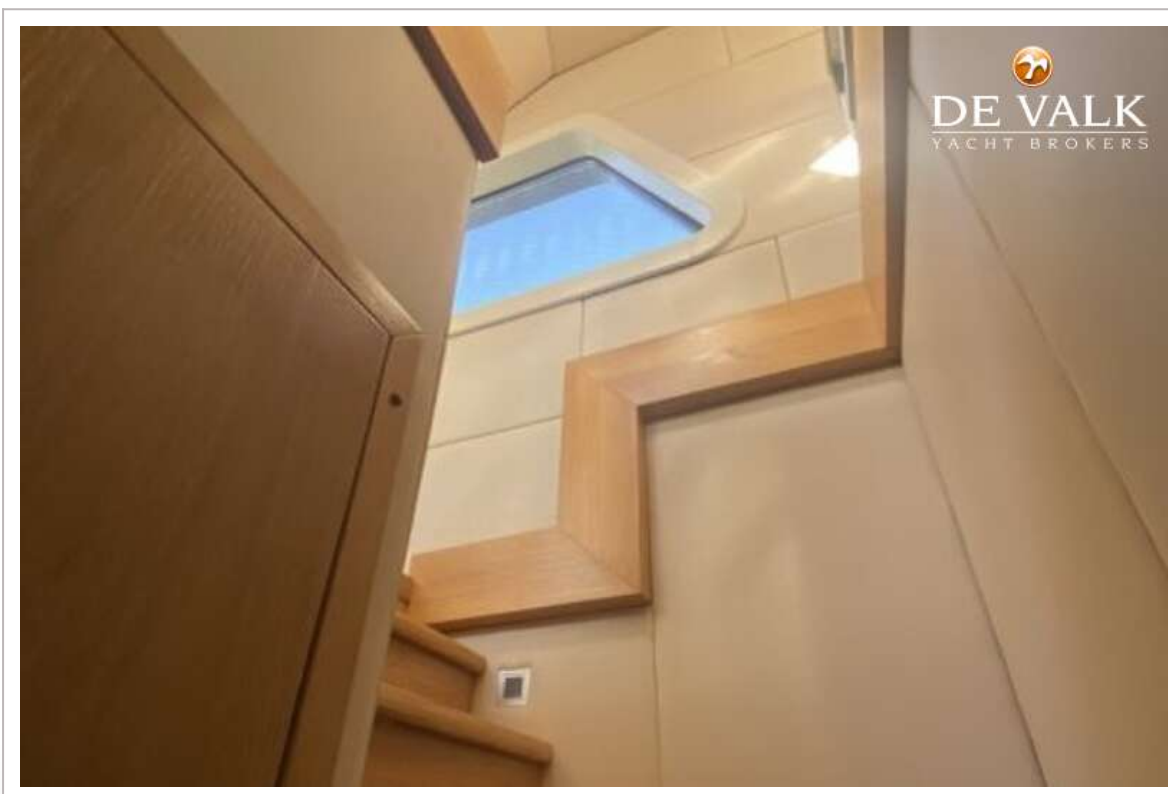
# SHARQ TRAVELLER QROOZ



# SHARQ TRAVELLER QROOZ



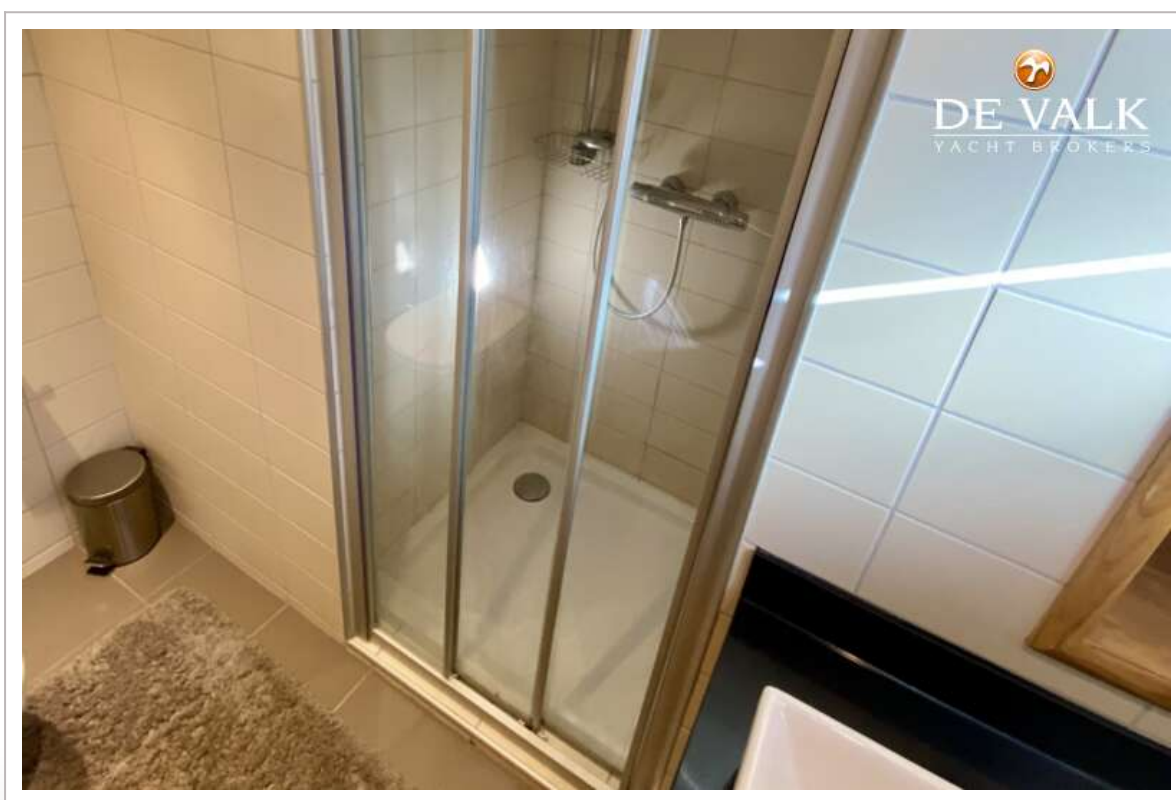
# SHARQ TRAVELLER QROOZ



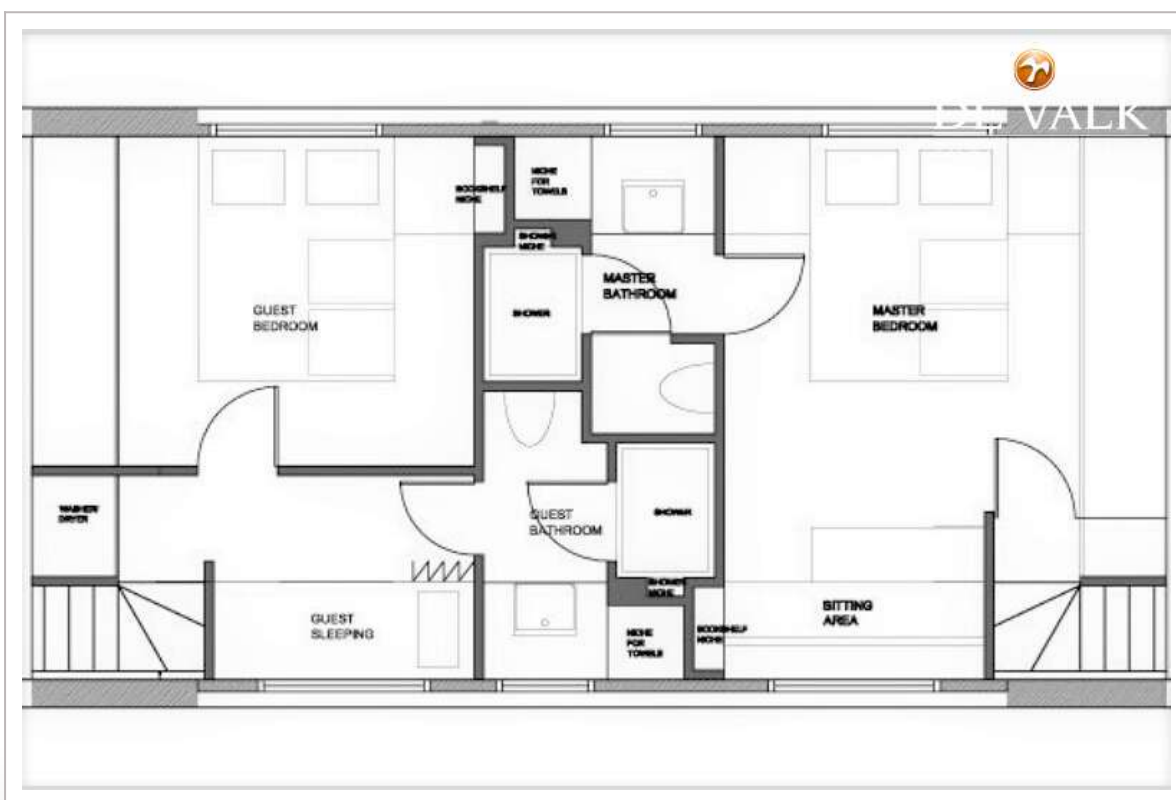
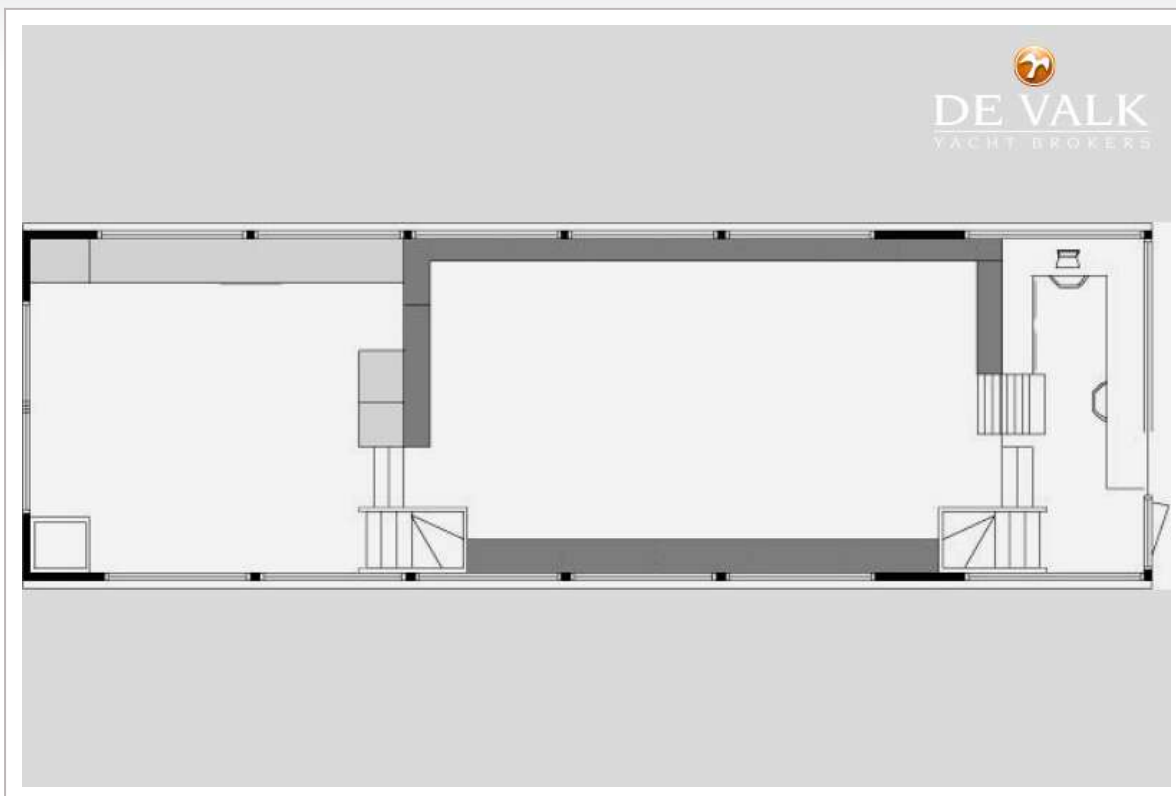


# SHARQ TRAVELLER QROOZ

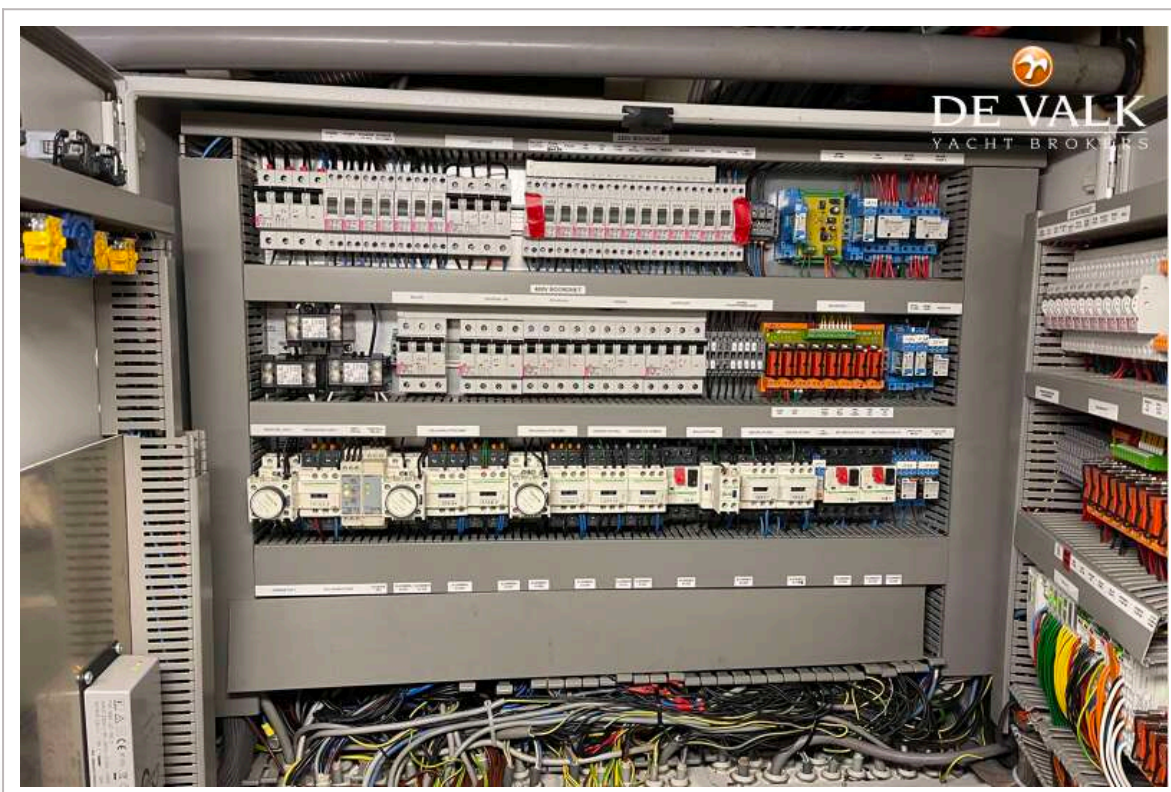




# SHARQ TRAVELLER QROOZ



# SHARQ TRAVELLER QROOZ



# SHARQ TRAVELLER QROOZ

