



HALLBERG RASSY 352

HALLBERG RASSY 352

BROKER'S COMMENTS

A nice example of Hallberg Rassy 352 is ready for her next owner. One of the youngest HR352 on the market (build number 763). Excellent accommodation, good headroom, lots of storage space. "Blue Marlin" was regularly maintained and equipment was often updated: new main engine, battery charger, batteries, plotter, teak caulking, just to mention a few.

Miha Spendal

SPECIFICATIONS

Dimensions	10.54 x 3.31 x 1.67 (m)	Builder	
Built	1990	Cabins	
Material	GRP	Berths	
Engine(s)	1 x Vetus diesel	Hp/Kw	41.00 (hp), 30.14 (kw)
Asking price	sold (VAT)	Lying	elsewhere / Not at sales office

CONTACT

Sales office	De Valk Istria	Telephone	+386 (1) 600 2704
Address	(Marina Izola) Dantejeva Ulica 22 6310 Izola SI	E-mail	istria@devalk.nl

DISCLAIMER

These particulars are given in good faith as supplied but cannot be guaranteed.



GENERAL

Model	HALLBERG RASSY 352
Type	sailing yacht
LOA (m)	10,54
Beam (m)	3,31
Draft (m)	1,67
Headroom (m)	1,90
Year built	1990
Launched	1990
Displacement (t)	6,70
Hull material	GRP
Hull colour	white White blue stripe
Keel type	long keel
Superstructure material	GRP
Deck finish	teak New 2007, new caulking 2020
Superstructure deck finish	teak New 2007, new caulking 2020
Cockpit deck finish	teak New 2007, new caulking 2020
Antifouling (year)	2021
Window frame	aluminium
Fuel tank (litre)	240
Freshwater tank (litre)	300
Wheel steering	New cover 2018

ACCOMMODATION

Interior	mahogany
Heating	diesel ducted hot air Eberspaecher from 2006
Chart table	yes
Countertop	plastic
Sink	stainless steel
Cooker	calor gas
Oven	yes



Fridge	yes
Hot water system	220V + engine New boiler 2008
Water pressure system	electrical
Owners cabin	v-bed
Wardrobe	hanging/drawers/shelves
Bathroom	en suite
Toilet	en suite
Toilet system	yes
Wash basin	in the bathroom
Shower	en suite
Guest cabin 1	twin single
Bathroom	separate
Toilet	separate

MACHINERY

No of engines	1
Make	Vetus
HP	41
kW	30.14
Fuel	diesel
Year installed	2019
Maximum speed (kn)	7
Cruising speed (kn)	6
Consumption (l/hr)	2
Engine hours	100
Engine cooling system	freshwater heat exchanger
Drive	shaft
Manual bilge pump	yes
Electric bilge pump	yes
Batteries	yes
Start battery	yes



Service battery	New 2020, AGM 230Ah
Battery monitor	2015 Victron 702 + BT
Battery charger	Victron Centaur new 2018
Solar panel	2015 Charger Victron MPPT 75'15 + BT
Shorepower	yes

NAVIGATION

Compass	Serviced 2018
Depth sounder	yes
Log	yes
Windset	yes
VHF	New 2016 ICOM IC-M423G
Autopilot	From 2014 Raymarine Evolution EV-200 Sail with P70s control display
GPS	yes
Plotter	From 2016 Raymarine s78, Charts Platinum-XL3 33P + central med
AIS receiver	2016 Vesper AIS + switch

EQUIPMENT

Sprayhood	New original from HR, 2019
Bimini	New 2020, to be installed
Sun awning	yes
Cockpit table	Teak, 2015
Gangway	2,3m teak, from 2014
Anchor	New Quick control, 2016
Anchor chain	50m, 8mm, stainless steel, new 2020
Anchor 2	Cobra 16kg
Anchor chain	yes
Windlass	electrical
Davits	stainless steel From 2007



Davits controls	manual
Pulpit	yes
Life raft	To be maintained
Radio-cd player	yes
Fire extinguisher	yes

RIGGING

Rigging	sloop
Standing rigging	wire
Material mast	aluminium
Mainsail	yes
Mainsail cover	yes
Genoa	New genoa cars 2017, Rutgerson
Genoa furler	yes
Gennaker	74sqm, in snuffer, 2016
Reefing System	slabreefing
Boomvang	mechanical



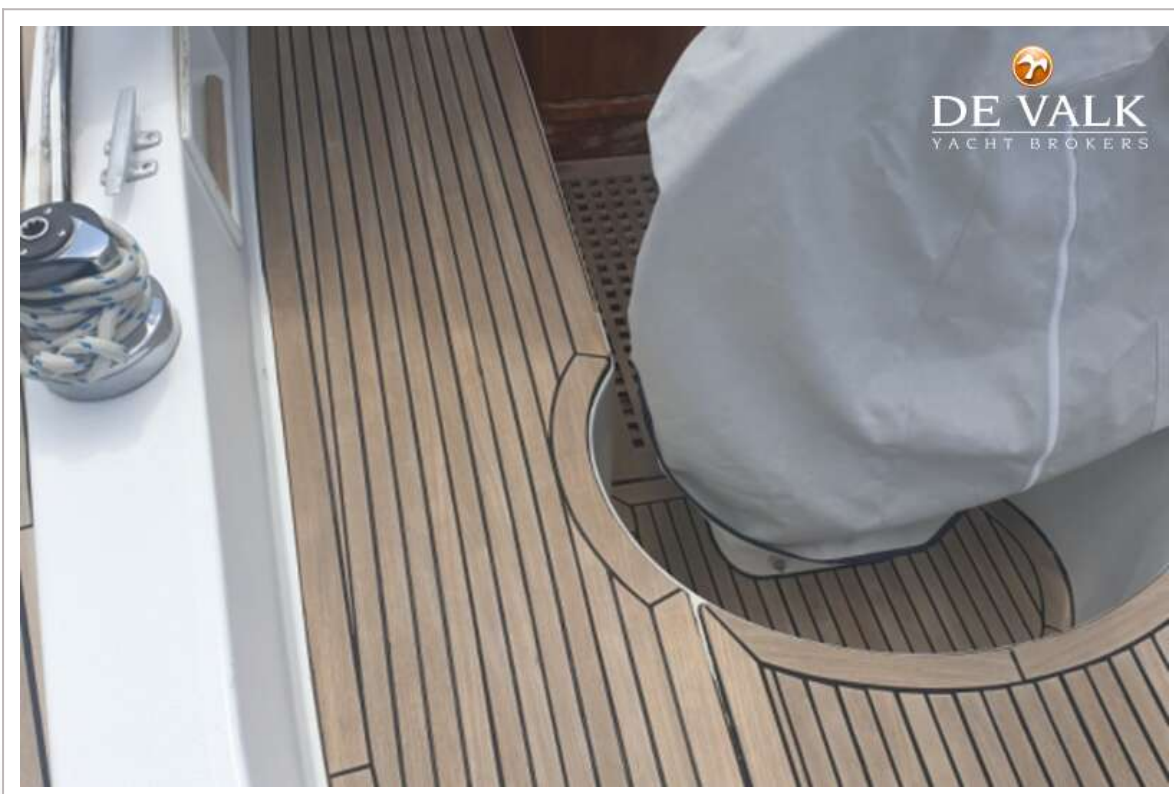
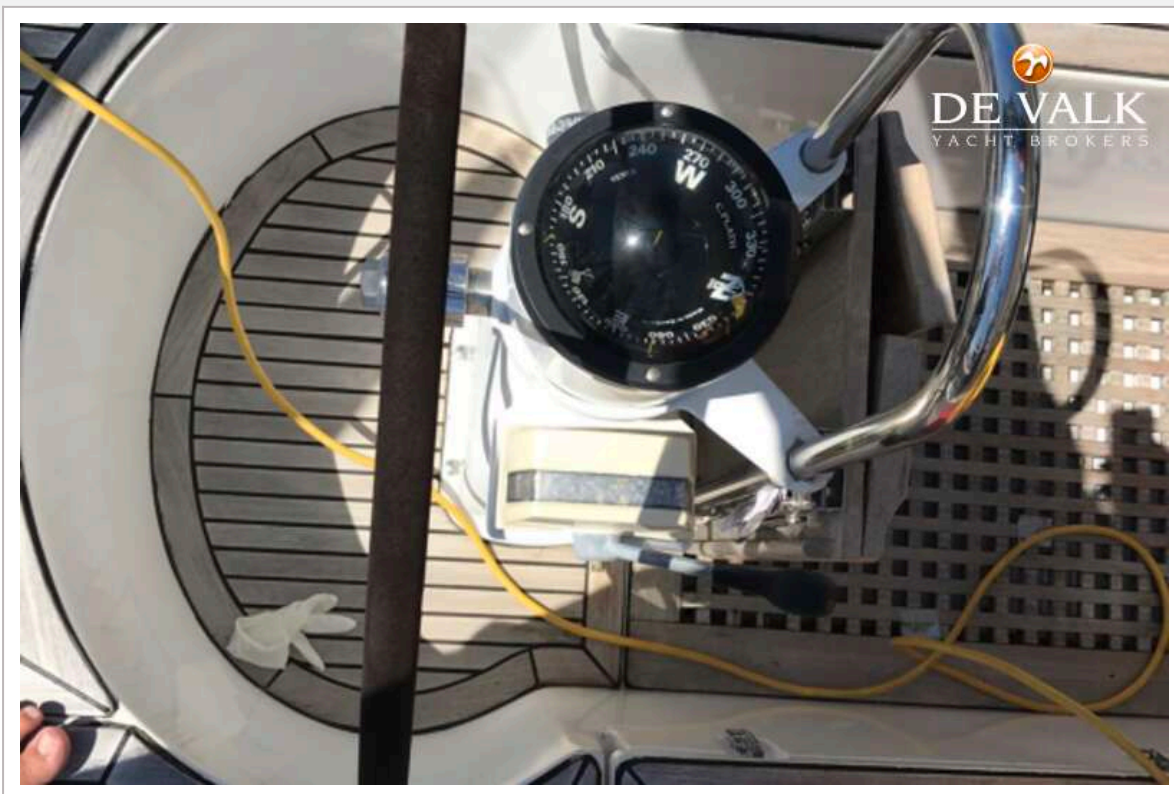
HALLBERG RASSY 352



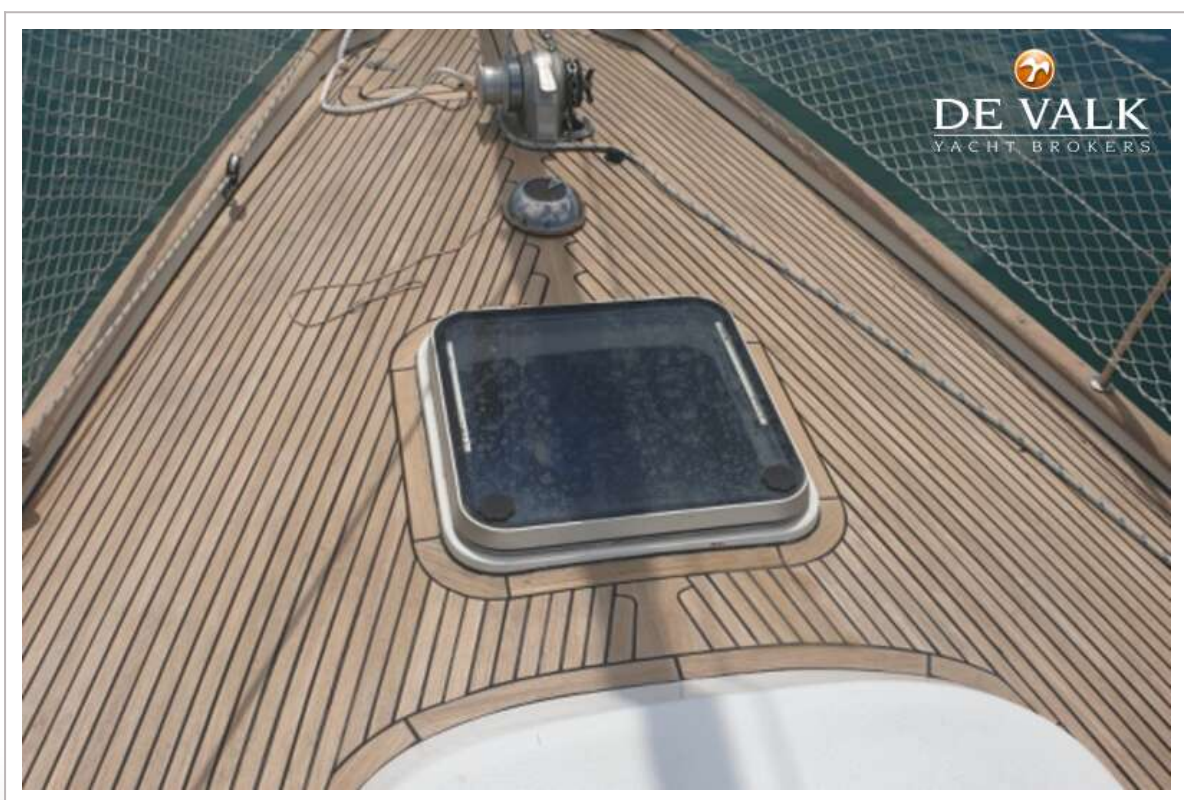
HALLBERG RASSY 352



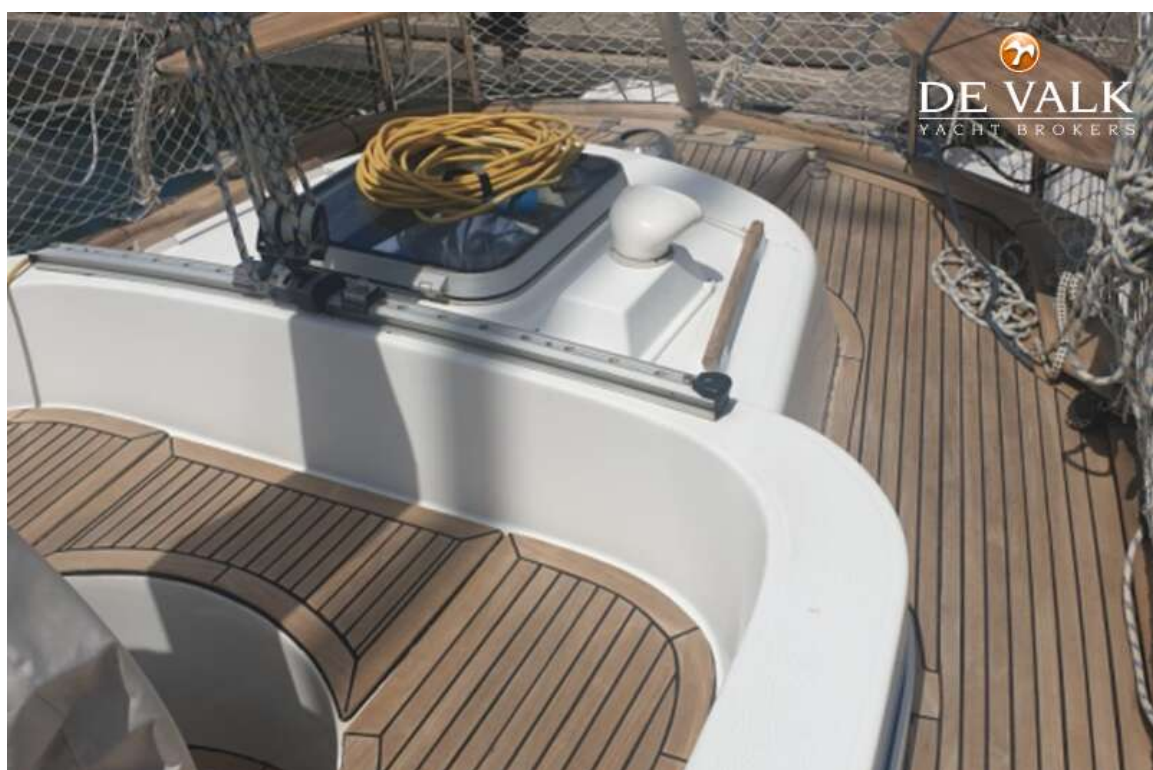
HALLBERG RASSY 352



HALLBERG RASSY 352



HALLBERG RASSY 352



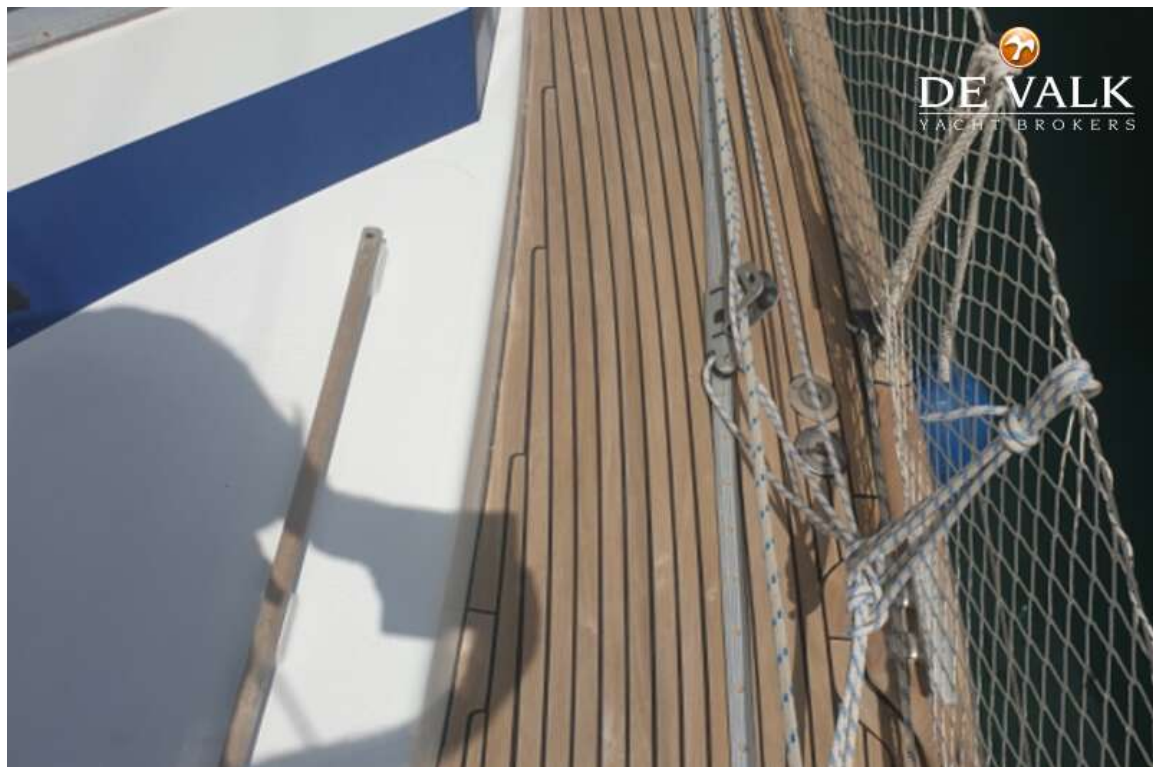
HALLBERG RASSY 352



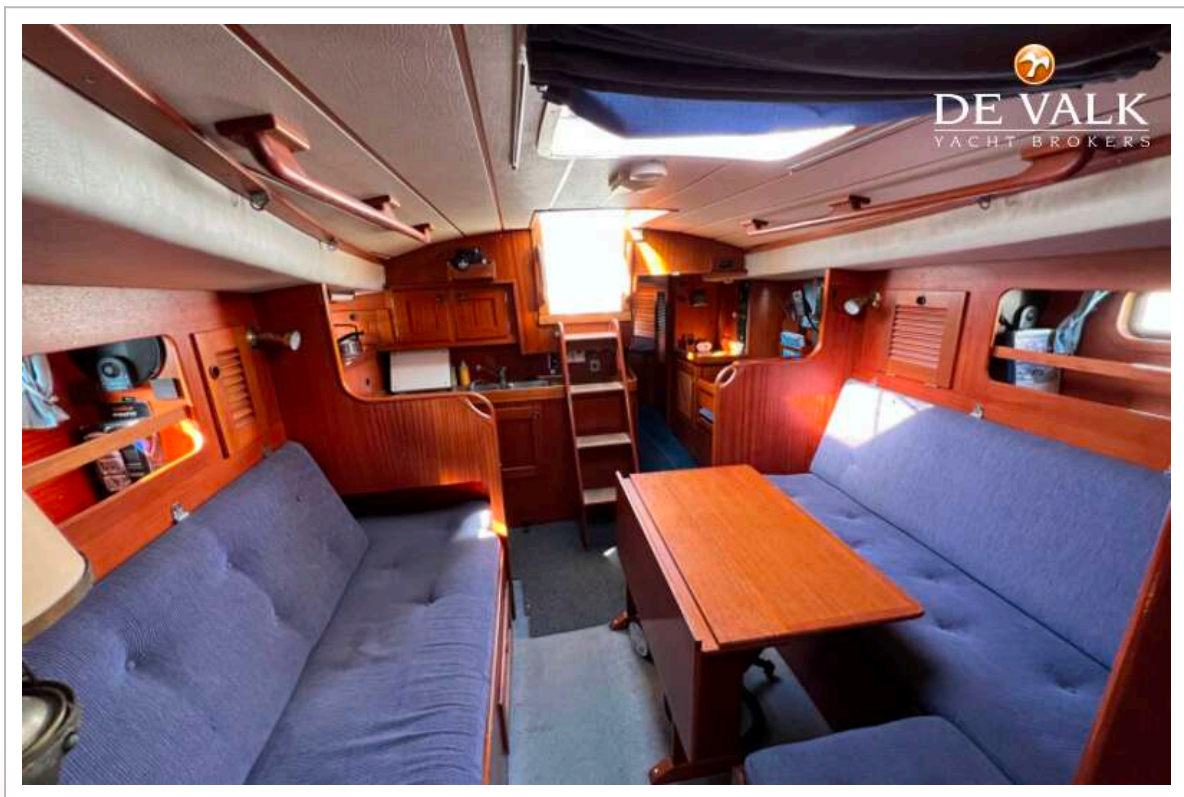
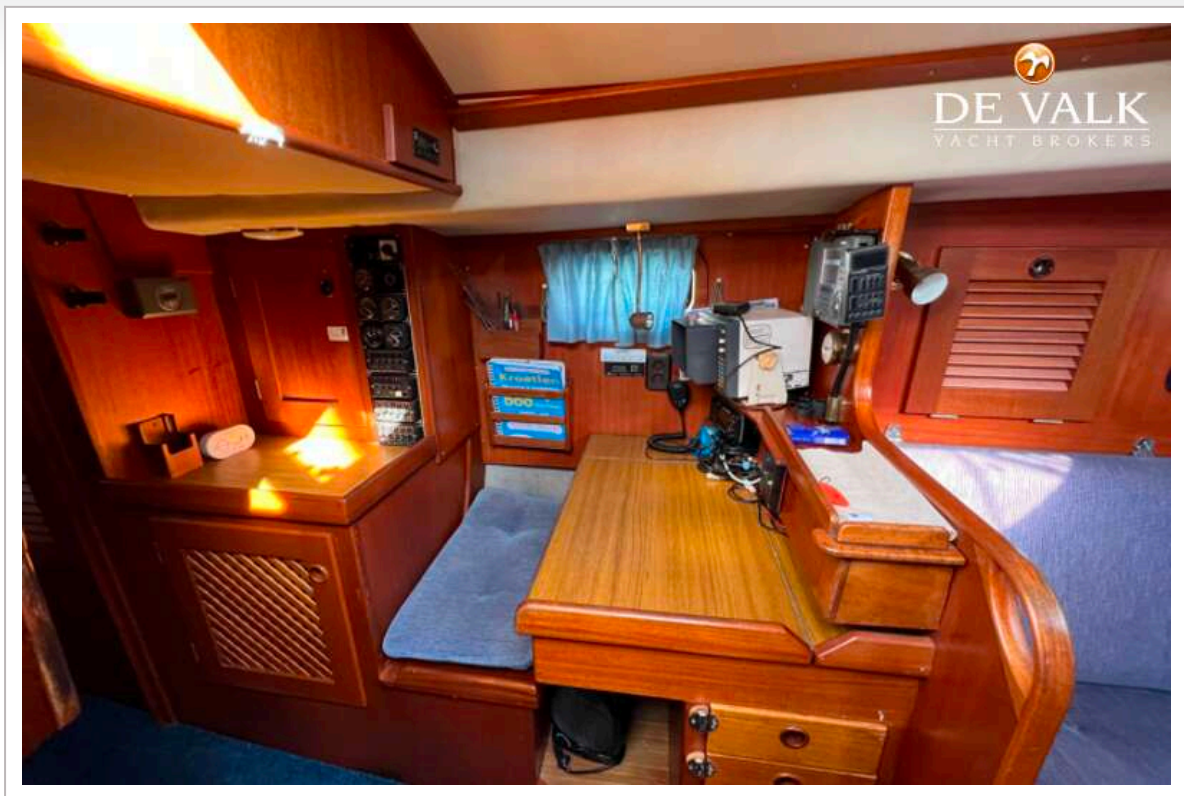
HALLBERG RASSY 352



HALLBERG RASSY 352



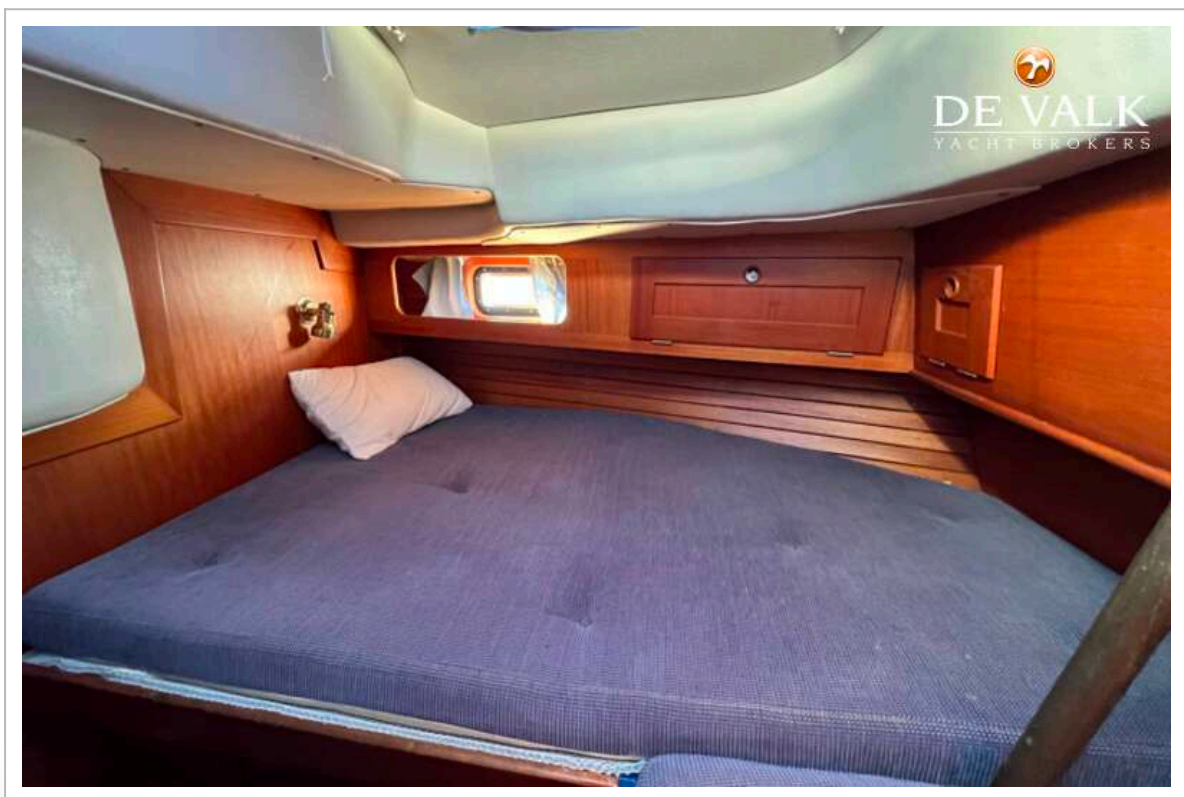
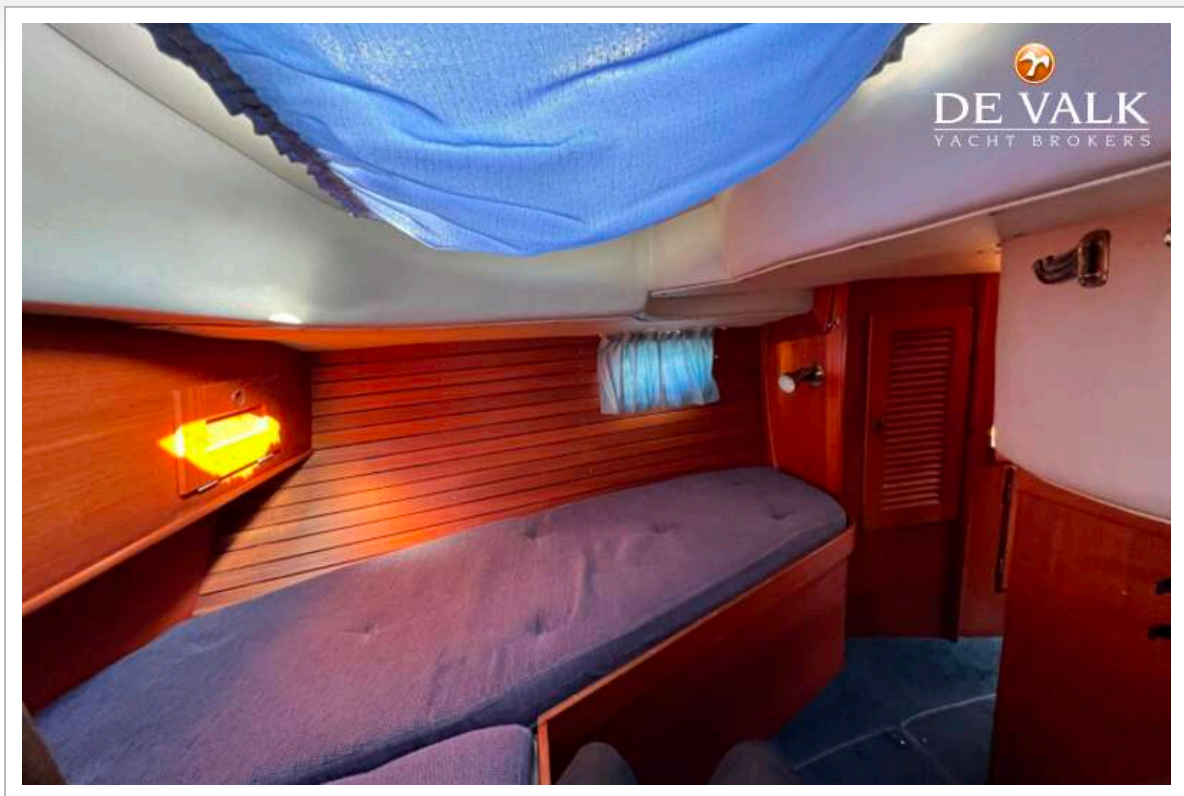
HALLBERG RASSY 352



HALLBERG RASSY 352



HALLBERG RASSY 352



HALLBERG RASSY 352



