



DE VALK
YACHT BROKERS



MONTY BANK 45 KOTTER



DE VALK
YACHT BROKERS

MONTY BANK 45 KOTTER

BROKER'S COMMENTS

Monty Bank 45 "Compaen" is established by Willems Shipyard, a specially designed and built Dutch steel cutter for the current / first owner. Equipped with a solid engine, bow thruster. A very spacious interior with plenty of storage space, two cabins, wheelhouse saloon and in the rear a beautiful kitchen, dinette and a service cabin. Ready for new sailing adventures. To be viewed ashore by appointment in the north of the Netherlands

Ger Bayens

SPECIFICATIONS

| | | | |
|---------------------|--------------------------|----------------|---------------------------------|
| Dimensions | 13.90 x 4.20 x 1.25 (m) | Builder | Gebr. Willems, Emmeloord |
| Built | 1996 | Cabins | 2 |
| Material | Steel | Berths | 6 |
| Engine(s) | 1 x DAF DF 615 NT diesel | Hp/Kw | 135.00 (hp), 99.36 (kw) |
| Asking price | sold (VAT) | Lying | elsewhere / Not at sales office |

CONTACT

| | | | |
|---------------------|--|------------------|----------------------|
| Sales office | De Valk Thuishaven | Telephone | +31 35 5829042 |
| Address | Peperstraat 7 1411 PX Naarden NL | E-mail | thuishaven@devalk.nl |

DISCLAIMER

These particulars are given in good faith as supplied but cannot be guaranteed.



GENERAL

| | |
|----------------------------|--------------------------|
| Model | MONTY BANK 45 KOTTER |
| Type | motor yacht |
| LOA (m) | 13,90 |
| Beam (m) | 4,20 |
| Draft (m) | 1,25 |
| Air draft min (m) | 2,85 |
| Headroom (m) | 2,00 |
| Year built | 1996 |
| Launched | 1996 |
| Builder | Gebr. Willems, Emmeloord |
| Country | The Netherlands |
| Designer | Willems |
| Displacement (t) | 19 |
| Ballast (tonnes) | lead 3 |
| CE norm | NA |
| Hull material | steel |
| Hull colour | red |
| Hull thickness (mm) | 5 |
| Hull shape | multi hard chine |
| Superstructure material | steel |
| Superstructure (mm) | 4 |
| Deck plate thickness (mm) | 4 |
| Rubbing strake | rubber |
| Deck material | steel |
| Deck finish | non-skid paint |
| Superstructure deck finish | paint |
| Antifouling (year) | 2021 |
| Window frame | aluminium |
| Window material | glass |
| Deckhatch | yes |



MONTY BANK 45 KOTTER

| | |
|------------------------------|---|
| Portholes | aluminium |
| Insulation | rockwool |
| Mast can be lowered | manual |
| Fuel tank (litre) | steel 600 |
| Level indicator (fuel tank) | yes |
| Freshwater tank (litre) | stainless steel 800 |
| Level indicator (freshwater) | yes |
| Blackwater tank (litre) | stainless steel 250 |
| Level indicator (blackwater) | yes |
| Blackwater tank extraction | deck extraction + uw line |
| Wheel steering | hydraulic |
| Outside helm position | hydraulic |
| More info on paintwork | paint is a bit rough and faded Epiphanes (2015) |
| Extra info | mosquito screens for portholes |

ACCOMMODATION

| | |
|-------------------------------|--|
| Cabins | 2 |
| Berths | 6 |
| Interior | teak |
| Layout | Front cabin with queen-size bed, shower / toilet, guest cabin, wheelhouse / saloon, galley, service room, dinette in the aft cabin |
| Floor | cork |
| Aft deck | yes |
| Pilot house/deck saloon | yes |
| Headroom saloon (m) | 2,00 |
| Heating | diesel ducted hot air Eberspächer |
| Dinette | yes |
| Dinette to convert into berth | into a double bed |
| Opening door to cockpit | yes |
| Galley | L-shape in the aft cabin, open to the saloon |
| Countertop | plastic |



MONTY BANK 45 KOTTER

| | |
|-----------------------|--|
| Sink | stainless steel |
| Cooker | ceramic 220V |
| Microwave/oven combi | 220V Combi Multitech |
| Fridge | with freezer compartment Zanussi (2016) |
| Hot water system | 220V + engine 75 Ltr boiler |
| Water pressure system | electrical |
| Owners cabin | French bed |
| Bed length (m) | 2,00 x 1,45 |
| Wardrobe | hanging and drawers |
| Bathroom | shared |
| Toilet | shared |
| Toilet system | electric Jabsco |
| Wash basin | in the bathroom |
| Shower | separate |
| Guest cabin 1 | bunk bed |
| Bed length (m) | 2,00 x 0,80 |
| Wardrobe | hanging |
| Toilet | shared |
| Extra info | with sink, washing machine, dryer and storage space Service room |
| Washing machine | Candy Aquamatic 8T |
| Dryer | Creda Compact |

MACHINERY

| | |
|----------------|-----------|
| No of engines | 1 |
| Make | DAF |
| Type | DF 615 NT |
| HP | 135 |
| kW | 99,36 |
| Fuel | diesel |
| Year installed | 1996 |



MONTY BANK 45 KOTTER

| | |
|--------------------------|--|
| Maximum speed (kn) | 8 |
| Cruising speed (kn) | 6,5 |
| Consumption (l/hr) | 5 |
| Engine hours | 2634 |
| Engine cooling system | freshwater heat exchanger |
| Drive | shaft |
| Engine controls | bowden cable |
| Gearbox | hydraulic |
| Bowthruster | electric NOBEL (2020 renovated) |
| Propeller type | fixed |
| Propeller blades | 3 |
| Propeller shaft material | stainless steel |
| Shaft lubrication | grease |
| Electric bilge pump | yes |
| Electrical installation | 24/12/220V |
| Generator | wet exhaust Mitsubitshi 8 KWH 1500 rpm |
| Running hours generator | +/- 400 |
| Batteries | yes |
| Start battery | 2x 230Ah |
| Service battery | 6 x 230Ah |
| Generator battery | 1x 120Ah |
| Battery monitor | VDO Volt & Amp |
| Battery charger/inverter | Vetus BC 2000 / 24 / 50Ah |
| Diode battery combiners | yes |
| Shorepower | with cable |

NAVIGATION

| | |
|-------------------|--|
| Compass | Autohelm ST 50 |
| Depth sounder/log | the outside transmitter is defect Vetus 2x |
| VHF | with ATIS & SOS Shipmate RS 8300 |
| VHF handheld | yes |



| | |
|------------------------|-----|
| Rudder angle indicator | yes |
|------------------------|-----|

EQUIPMENT

| | |
|----------------------------|------------------------------|
| Fixed windscreen | yes |
| Sprayhood | with closable rear side 2017 |
| Bathing platform | stainless steel & teak |
| Boarding ladder | stainless steel |
| Anchor | Pool |
| Anchor chain | yes |
| Windlass | manual Vetus |
| Capstan | Vetus |
| Deck wash | yes |
| Davits | stainless steel |
| Davits controls | manual |
| Sea railing | tube |
| Grab rail (superstructure) | stainless steel |
| Railing side opening gates | 2x |
| Pushpit | yes |
| Pulpit | yes |
| Lifebuoy | yes |
| Wiper | 2x / 3x |
| Horn | |
| Fenders | yes |
| Mooring lines | yes |
| TV | yes |
| Clock - barometer | yes |
| Fire extinguisher | yes |
| Latest extinguisher survey | Expired |

RIGGING

Rigging



Standing rigging

wire

Brand mast

Mast en Zo (2015)

Material mast

aluminium

Spreaders

yes

Mast lowering system

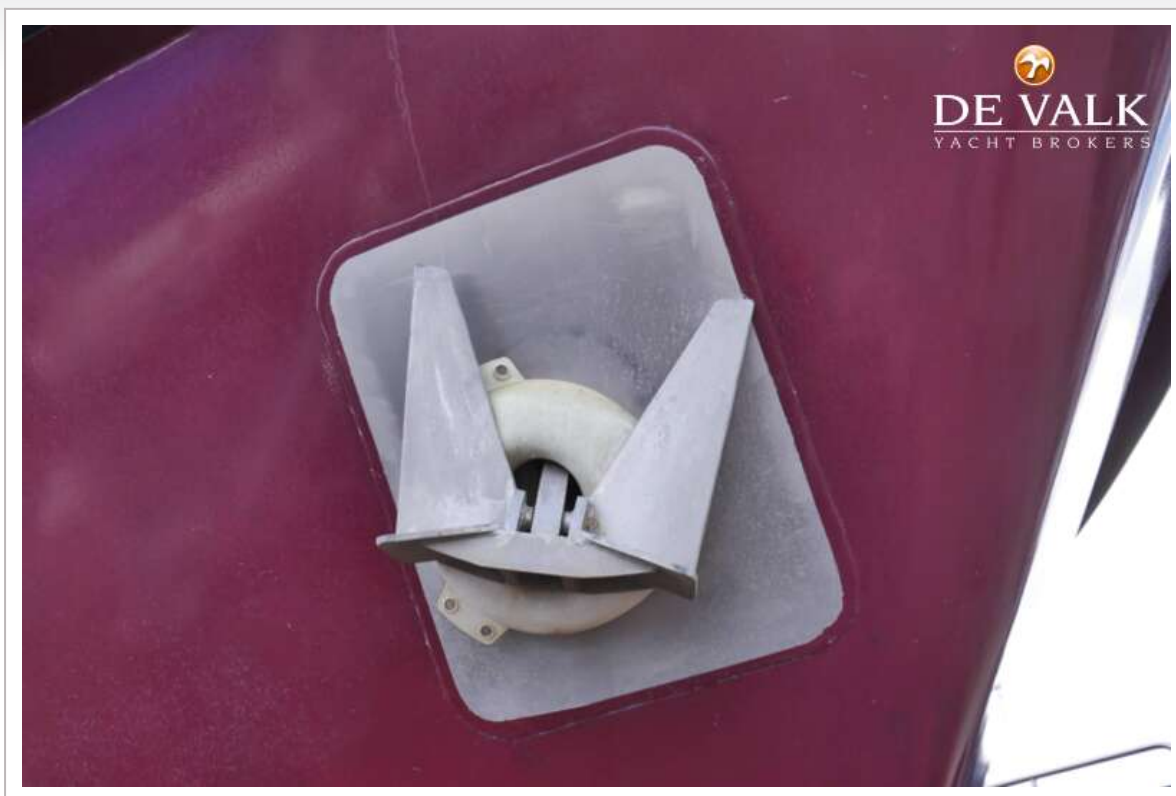
manual



MONTY BANK 45 KOTTER



MONTY BANK 45 KOTTER



MONTY BANK 45 KOTTER



MONTY BANK 45 KOTTER



MONTY BANK 45 KOTTER



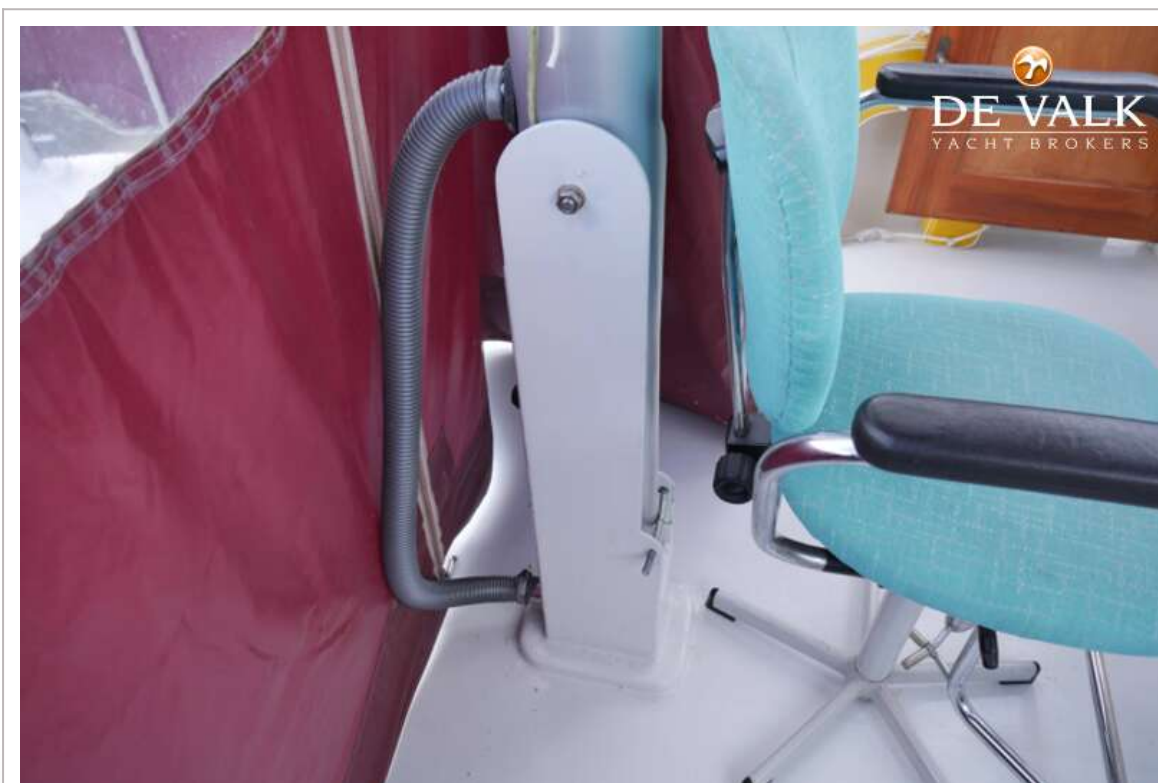
MONTY BANK 45 KOTTER



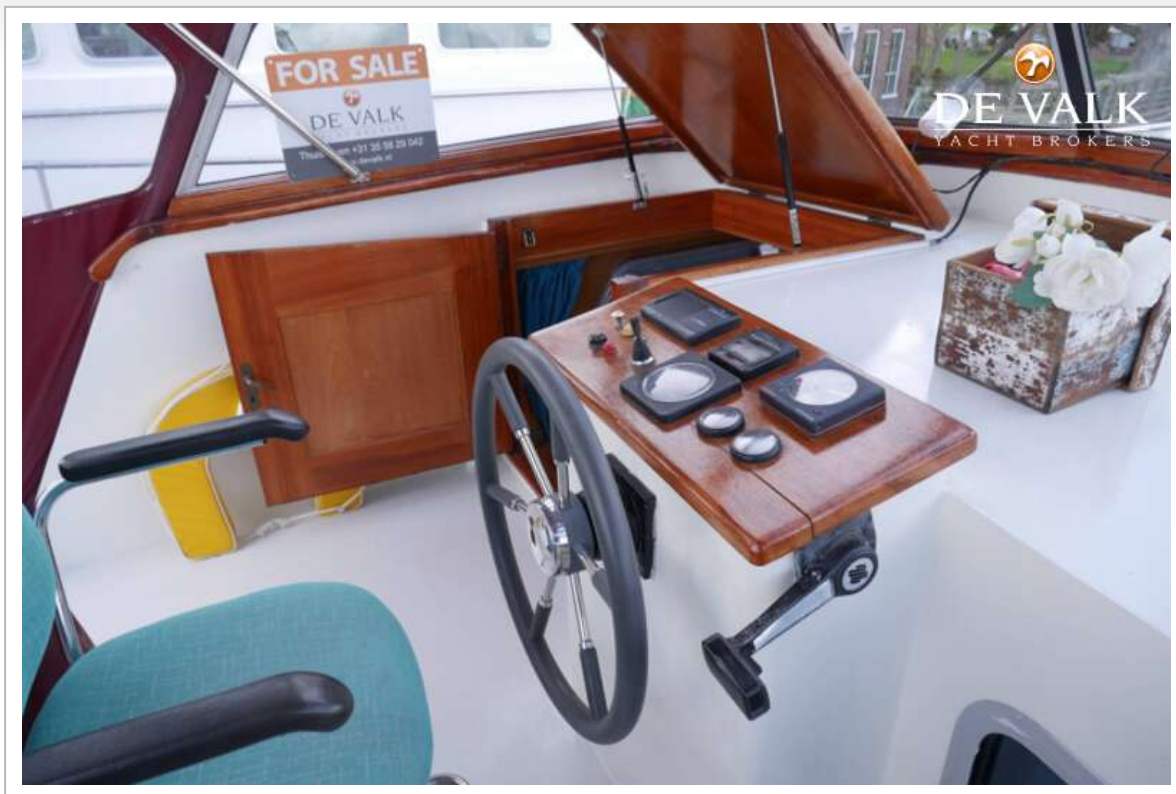
MONTY BANK 45 KOTTER



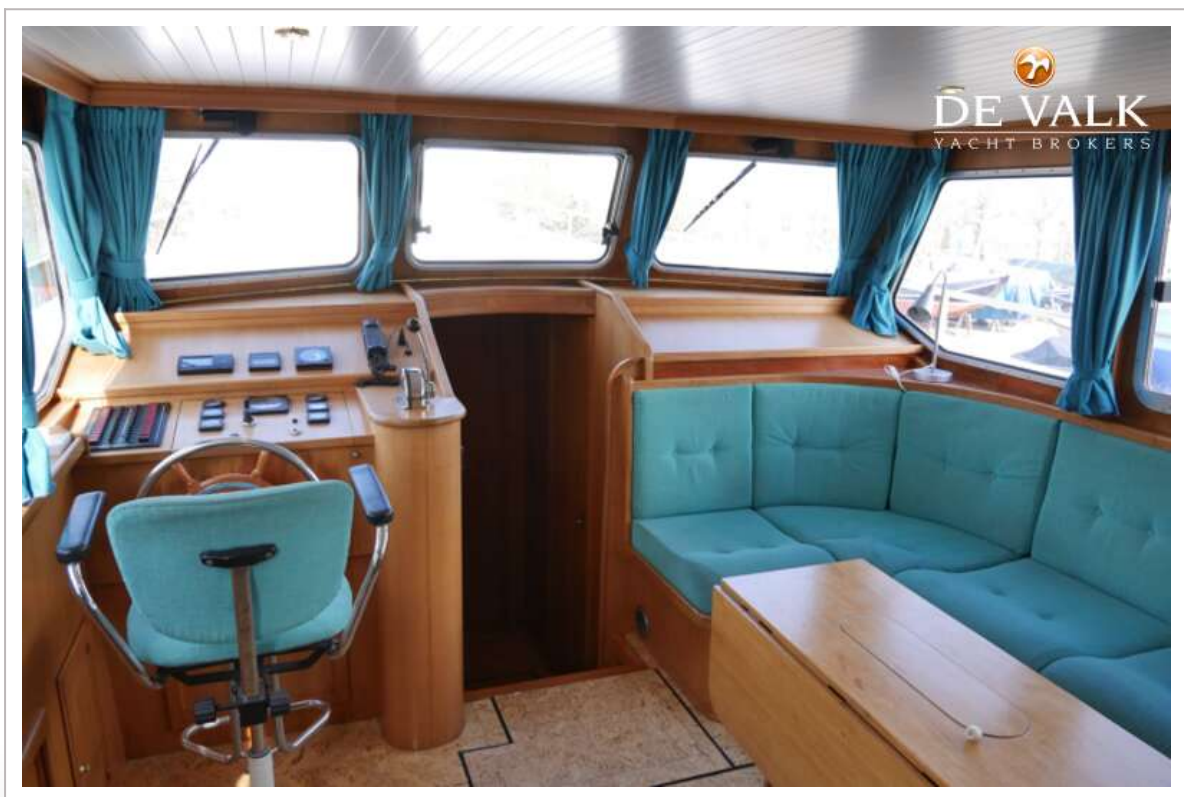
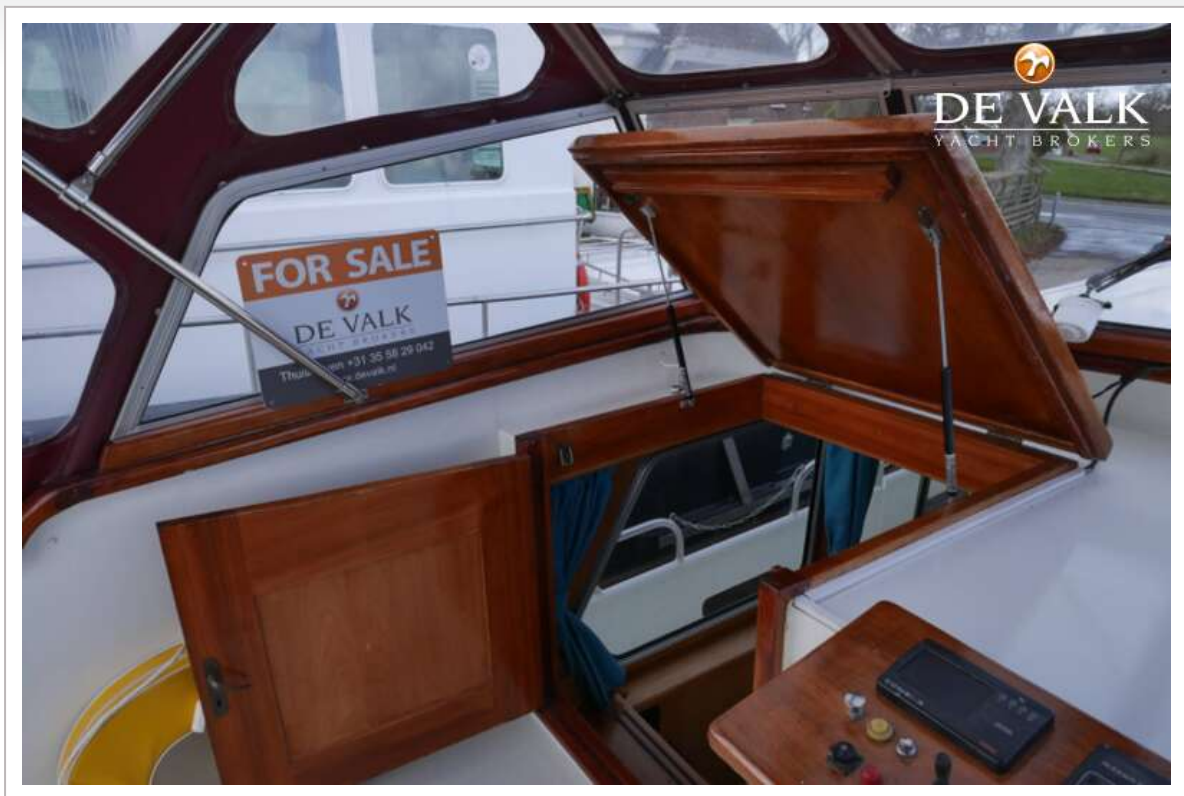
MONTY BANK 45 KOTTER



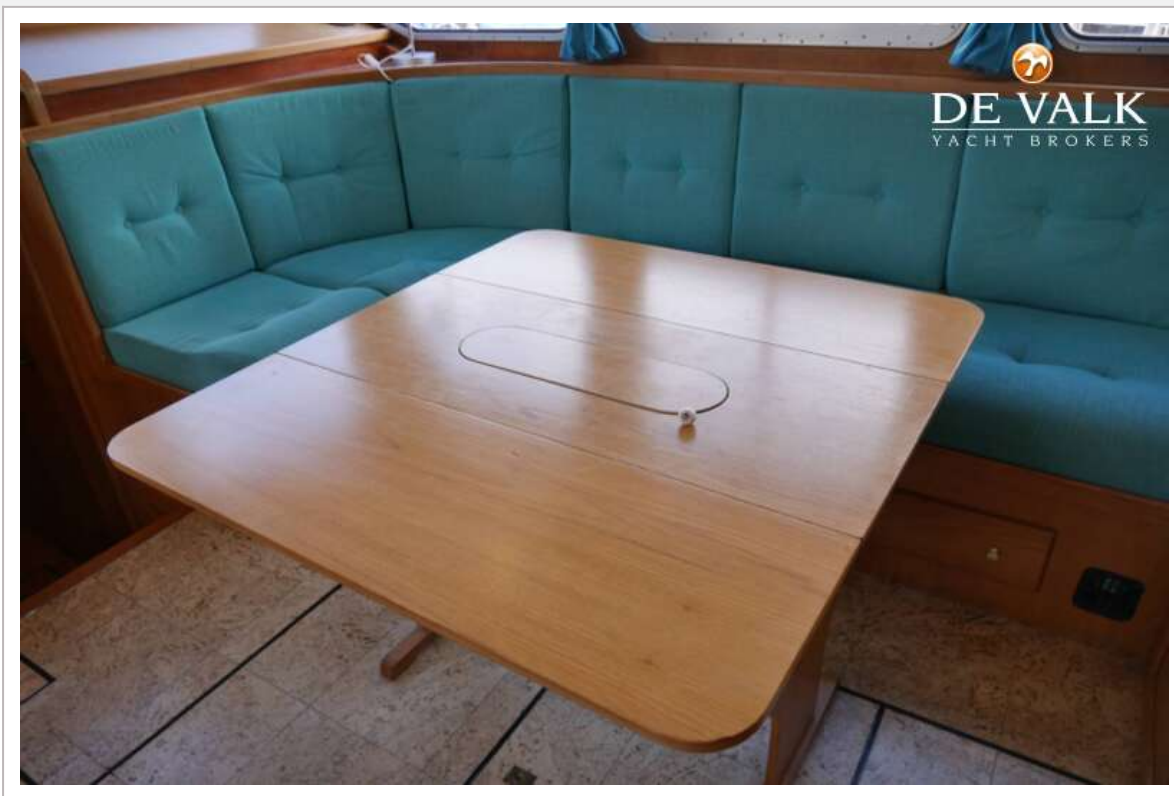
MONTY BANK 45 KOTTER



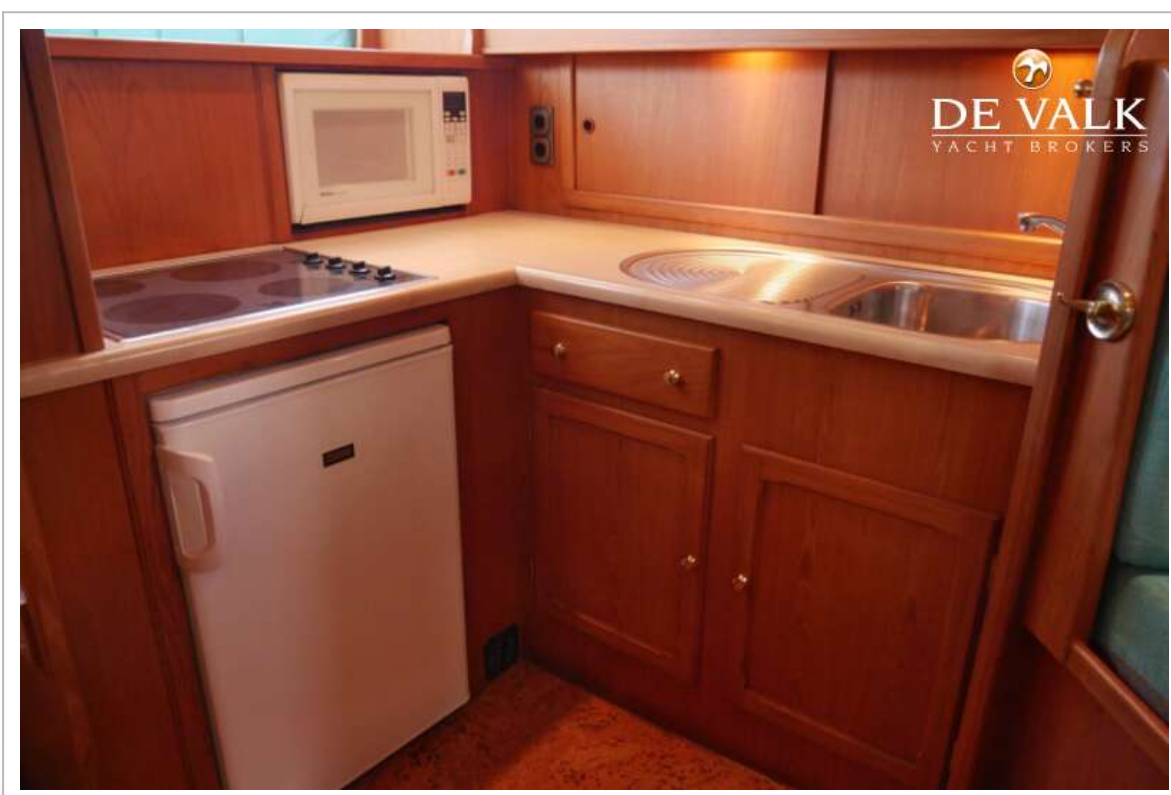
MONTY BANK 45 KOTTER



MONTY BANK 45 KOTTER



MONTY BANK 45 KOTTER



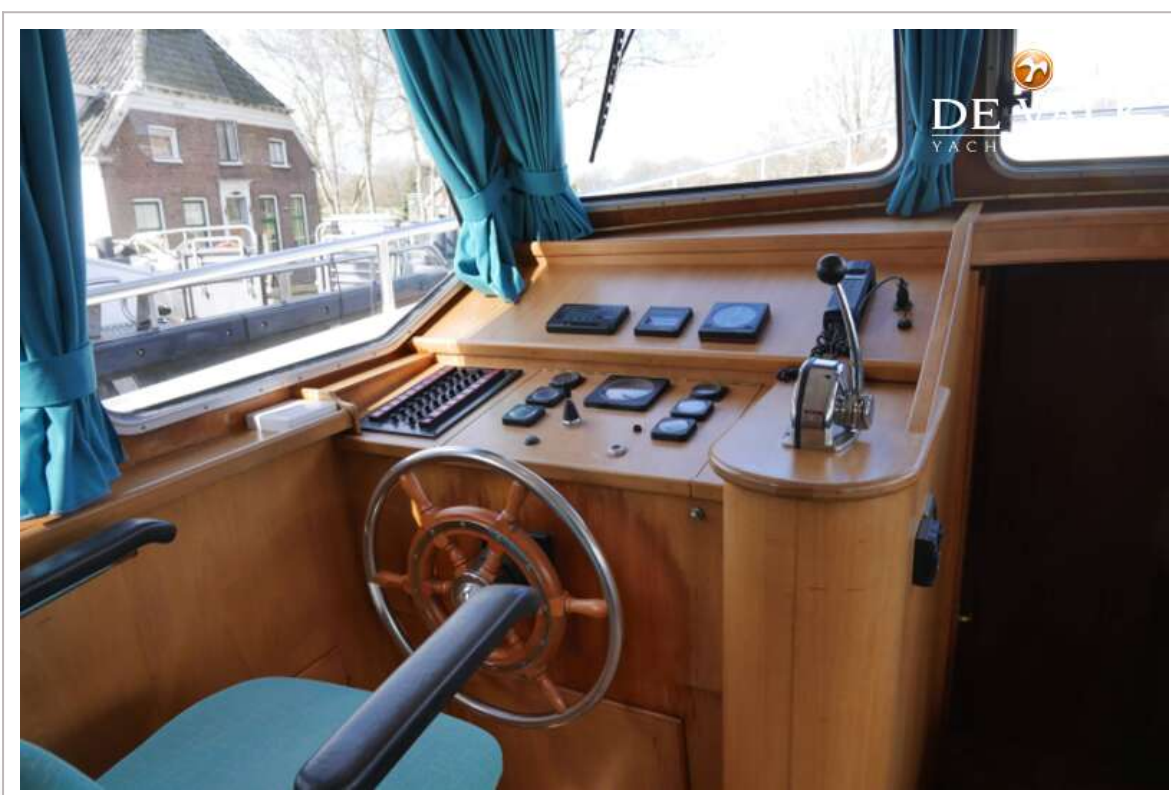
MONTY BANK 45 KOTTER



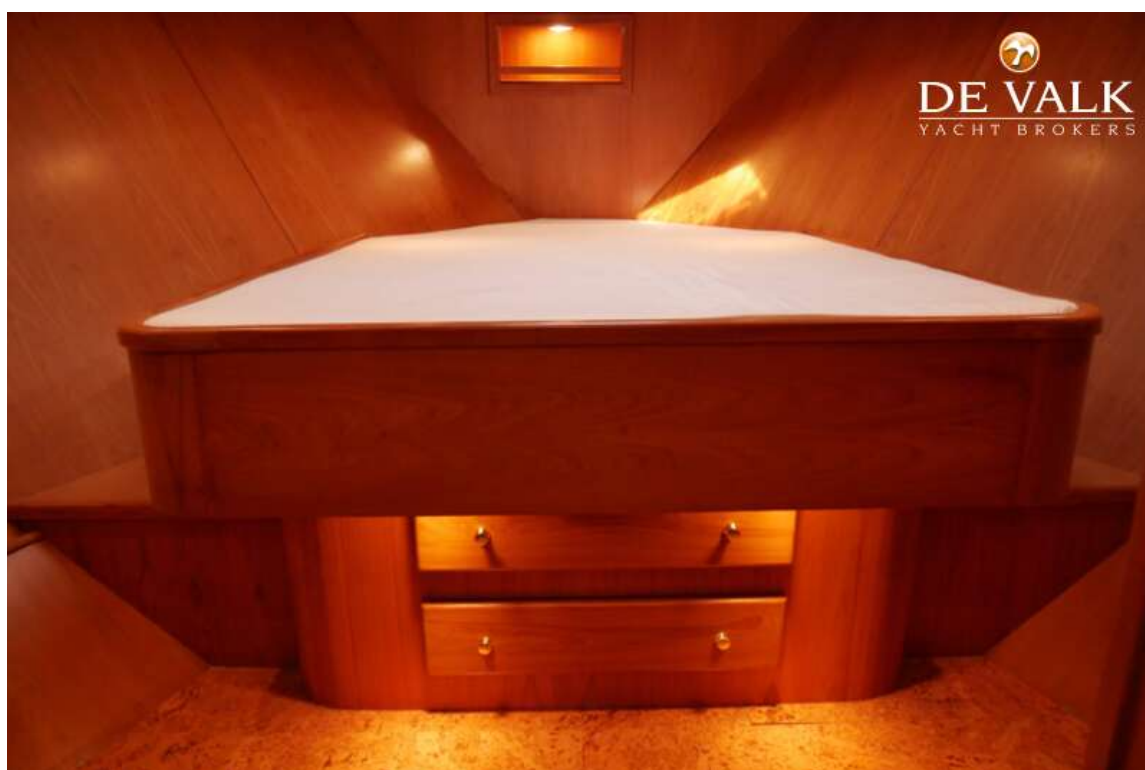
MONTY BANK 45 KOTTER



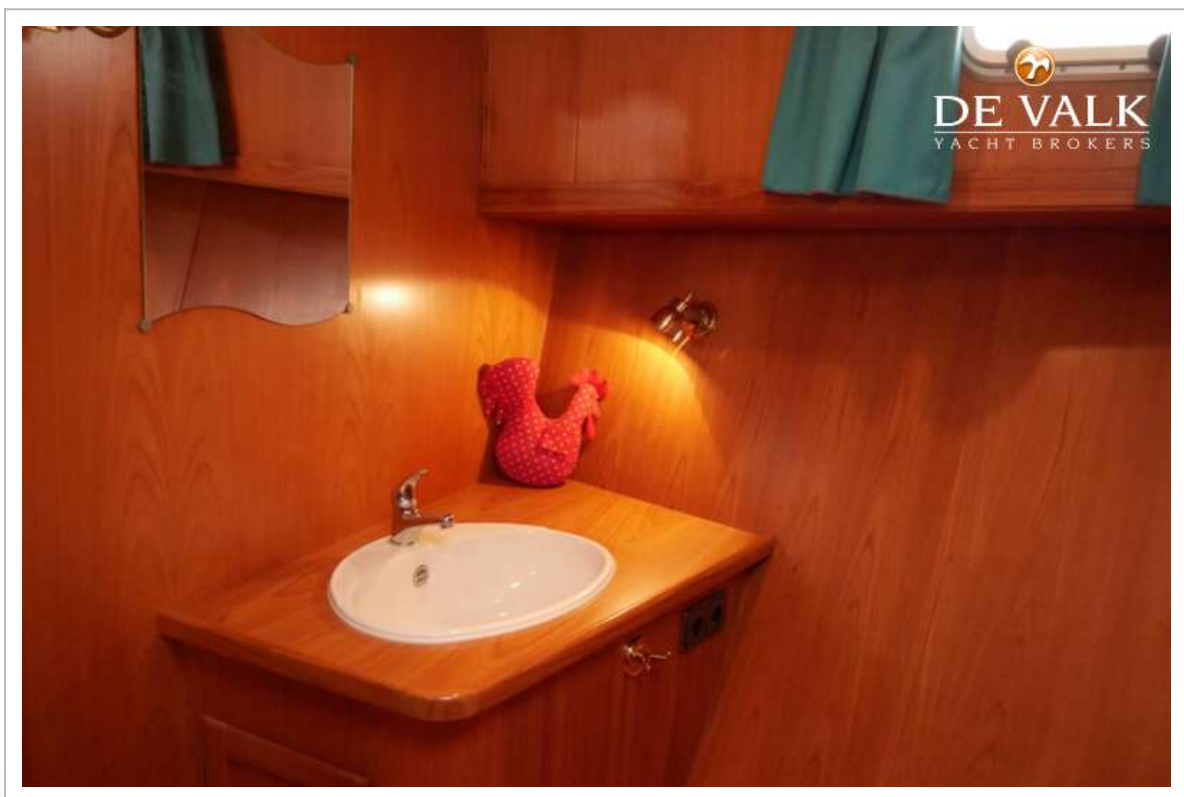
MONTY BANK 45 KOTTER



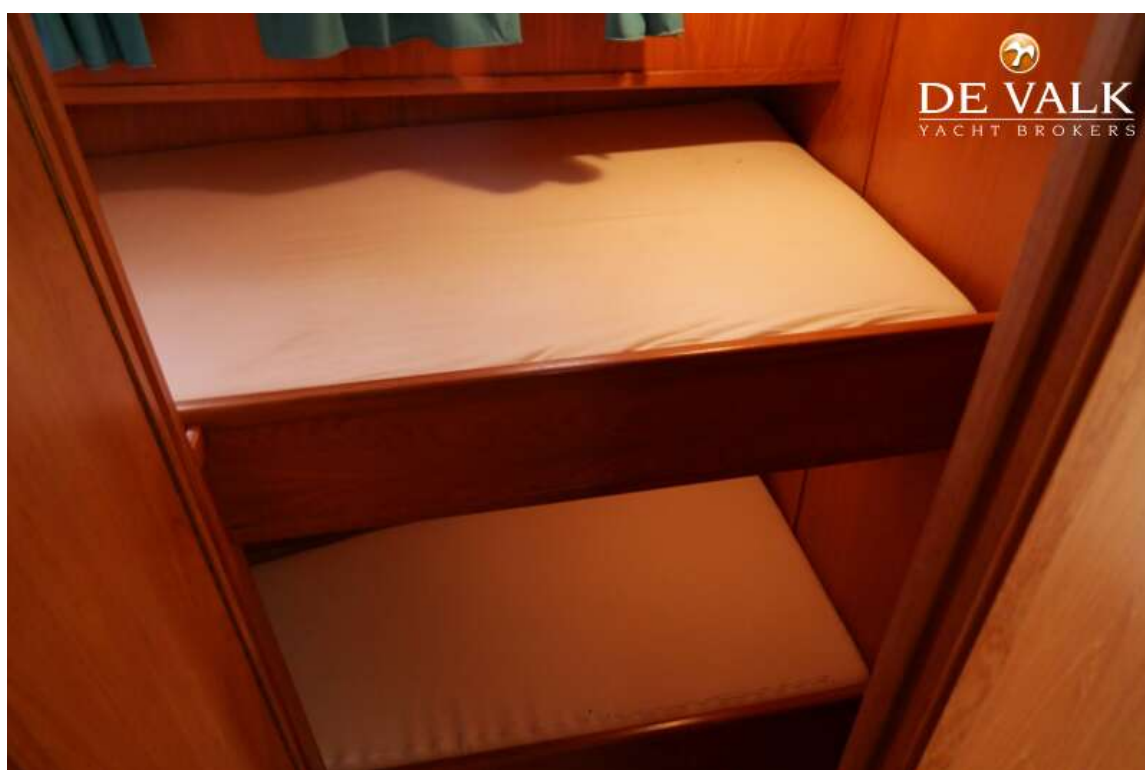
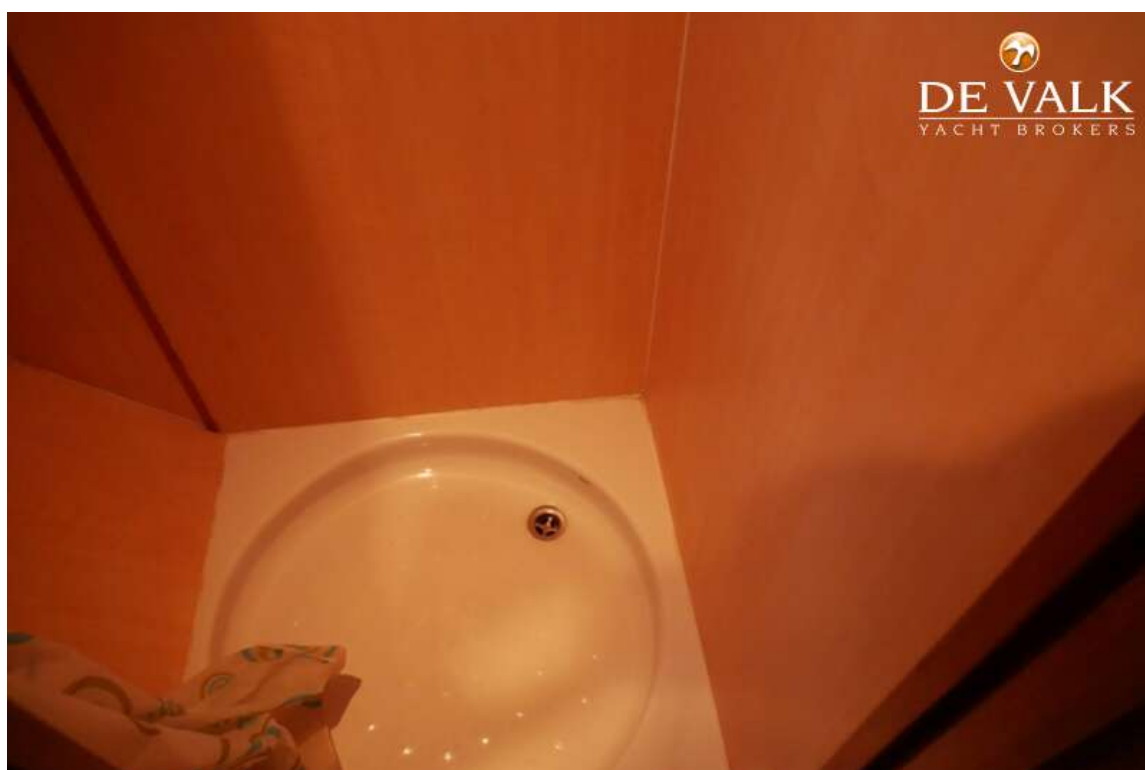
MONTY BANK 45 KOTTER



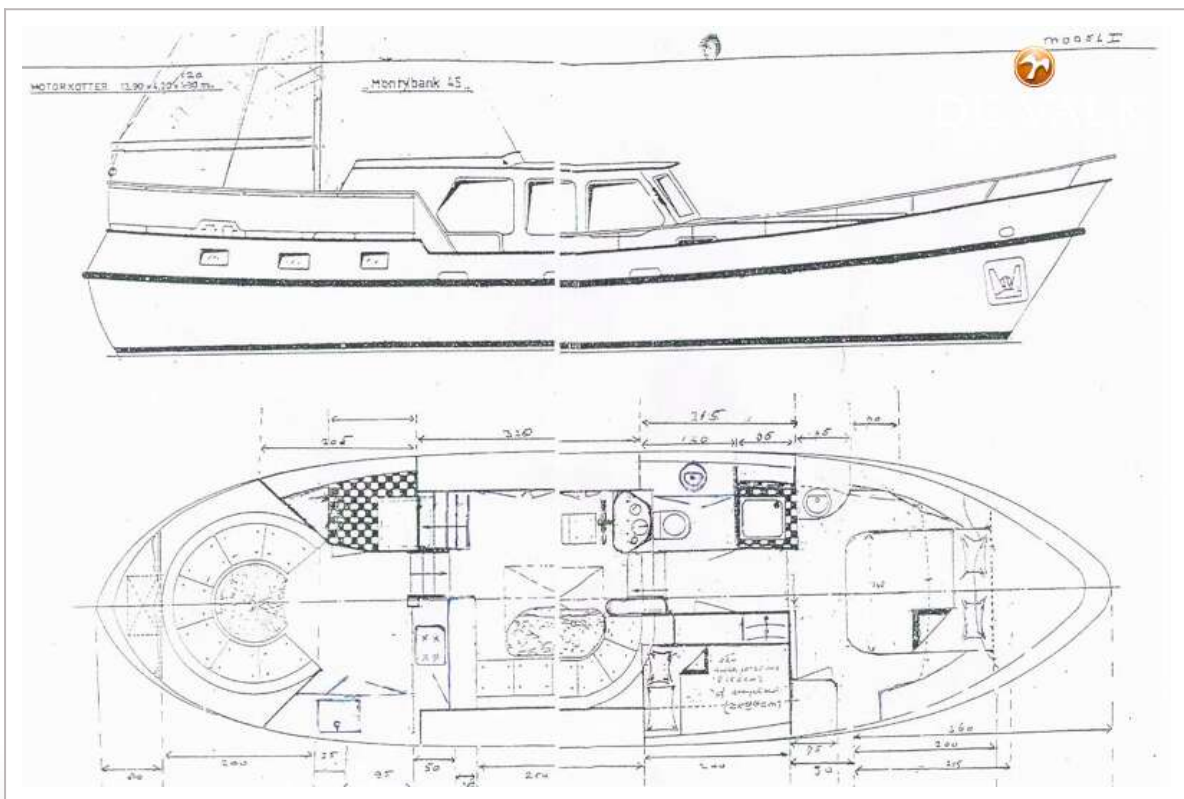
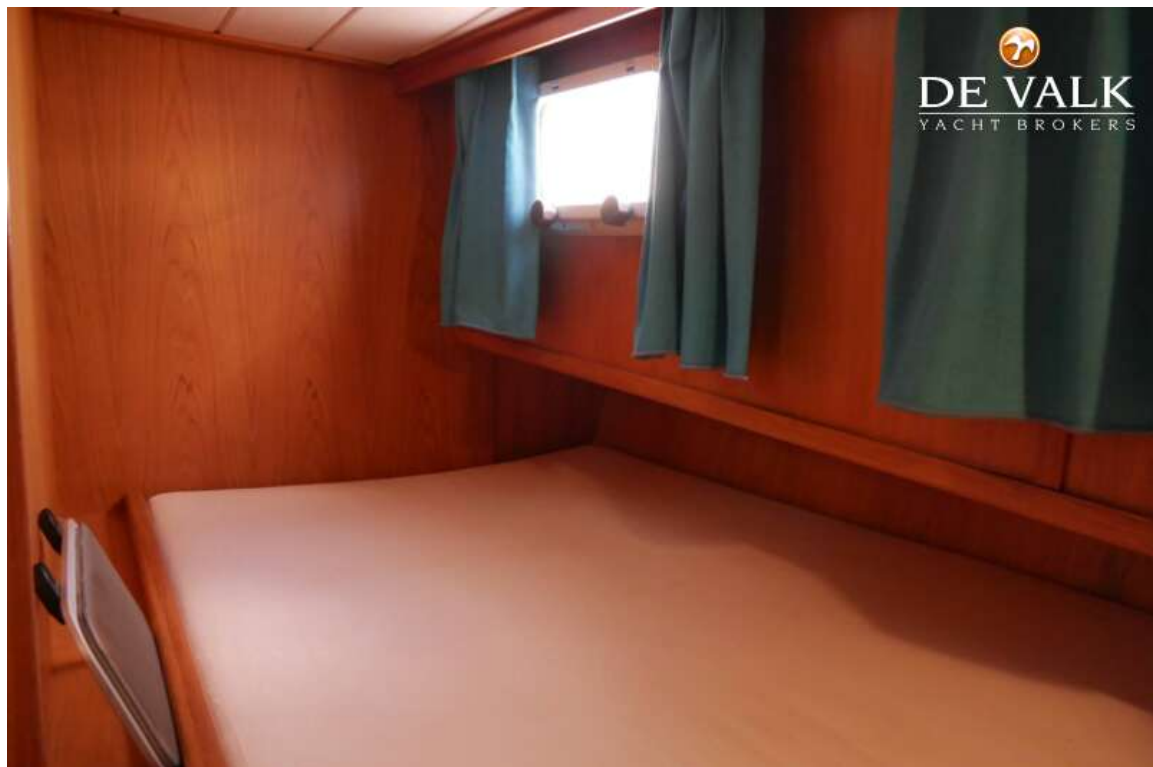
MONTY BANK 45 KOTTER



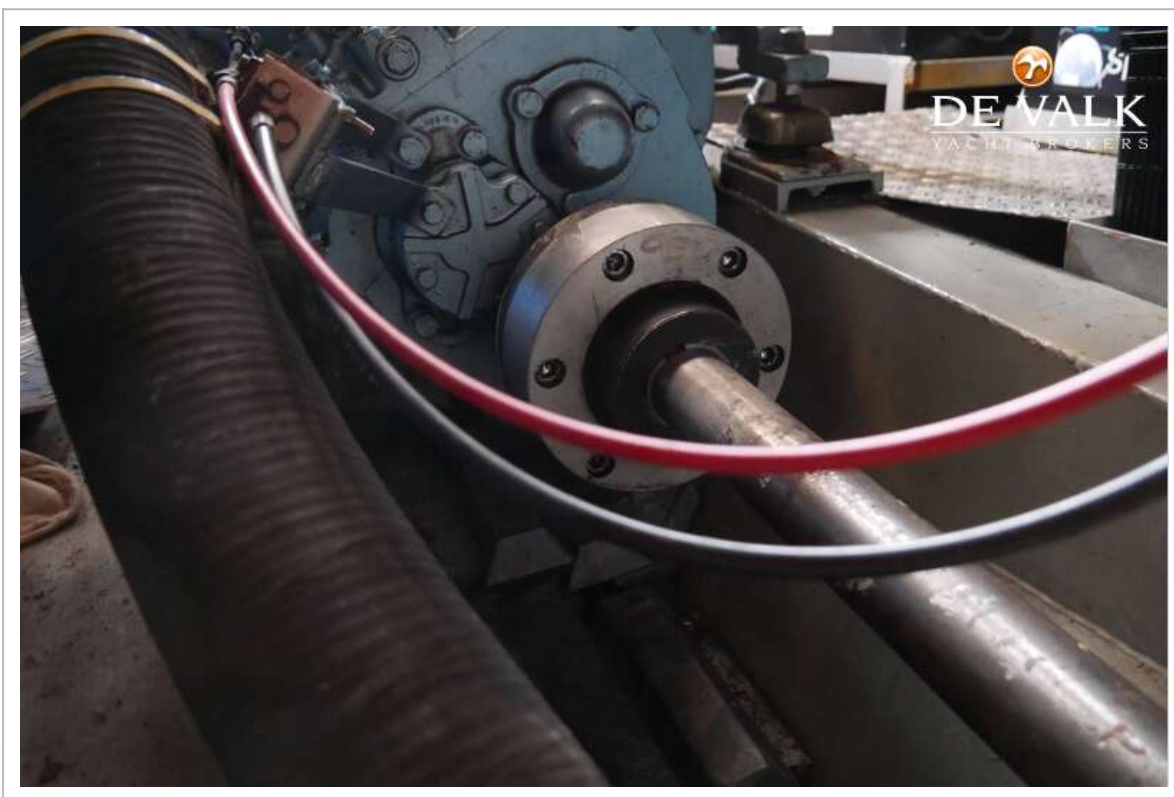
MONTY BANK 45 KOTTER



MONTY BANK 45 KOTTER



MONTY BANK 45 KOTTER



MONTY BANK 45 KOTTER

