



DE VALK
YACHT BROKERS



SPIEGELKOTTER 1500



DE VALK
YACHT BROKERS

BROKER'S COMMENTS

Charming and strongly built round bilged Spiegelkotter with fixed wheelhouse and double glazing all around, suitable for a long stay and onboard living. Practically all equipment, household and navigation has been renewed in 2020. Due to the not fully furnished salon, you have all the freedom to organize and use it according to your own wishes. The aft cabin is very spacious and the storage space on board will exceed your expectations. Tasteful interior with lots of light and ventilation. A motor yacht that you should not miss. A maritime "loft" with the view that you can determine yourself.

Marc Weijenberg

SPECIFICATIONS

Dimensions	15.50 x 4.60 x 1.35 (m)	Builder	Jachtwerf Van Geffen / Owner
Built	1998	Cabins	2
Material	Steel	Berths	4
Engine(s)	1 x Mitsubishi 6D14-T diesel	Hp/Kw	169.00 (hp), 124.38 (kw)
Asking price	sold (VAT)	Lying	contact Sint Annaland

CONTACT

Sales office	De Valk Sint Annaland B.V.	Telephone	+31 (0)166 601 000
Address	Koelhuisweg 4 4697 RM Sint Annaland NL	E-mail	sintannaland@devalk.nl

DISCLAIMER

These particulars are given in good faith as supplied but cannot be guaranteed.



GENERAL

Model	SPIEGELKOTTER 1500
Type	motor yacht
LOA (m)	15,50
Beam (m)	4,60
Draft (m)	1,35
Air draft (m)	3,90
Air draft min (m)	5,40
Headroom (m)	2,05
Year built	1998
Builder	Jachtwerf Van Geffen / Owner
Country	The Netherlands
Designer	Condor Yachting
Displacement (t)	21
Hull material	steel
Hull colour	grey
Hull shape	round-bilged
Superstructure material	steel
Rubbing strake	stainless steel
Deck material	steel
Deck finish	non-skid paint
Cockpit deck finish	non-skid paint
Window frame	aluminium Rhigo
Window material	double glazing
Deckhatch	Gebo
Portholes	Gebo
Insulation	rockwool
Radar arch	non collapsible
Fuel tank (litre)	steel 2000
Freshwater tank (litre)	stainless steel 1500
Blackwater tank (litre)	stainless steel 1500



Blackwater tank extraction	Uw line pump (deck prepared)
Wheel steering	hydraulic
Emergency tiller	yes
More info on hull	6mm steel hull
More info on paintwork	hull and decks painted 2021
Extra info	Gauzes for portholes
Extra info	Blinds for hatches
Extra info	Covers for front windows

ACCOMMODATION

Cabins	2
Berths	4
Interior	mahogany
Floor	parquet
Aft deck	yes
Pilot house	yes
Saloon	yes
Headroom saloon (m)	2,10
Heating	central heating Post Caminus 15kW(2020)
Aft Cabin	yes
Sliding door to aft deck	yes
Galley	yes
Countertop	
Sink	stainless steel 1 x
Cooker	induction Beko 4 burner (2020)
Oven	AEG (220v)
Fridge	Husky (2020)
Freezer	Bosch (2020, optional)
Hot water system	on central heating
Water pressure system	electrical
Owners cabin	double bed



Bed length (m)	2,10 x 1,60 (headroom 1,93)
Wardrobe	hanging and shelves
Bathroom	shared 1
Toilet	shared
Toilet system	electric Sani-Compact (2020)
Wash basin	in the bathroom
Shower	shared
Guest cabin 1	v-bed (annex storage-room)
Bed length (m)	2,00 x 0,75
Wardrobe	hanging and shelves
Washing machine	AEG 5-7kg (2020)
Dryer	(optional)
Extra info	Some appliances in the pictures are optional
Extra info	2 x bar-stool not included

MACHINERY

No of engines	1
Make	Mitsubishi
Type	6D14-T
HP	169
kW	124,38
Fuel	diesel
Year installed	2003
Maximum speed (kn)	9
Cruising speed (kn)	7
Consumption (l/hr)	6
Engine hours	200
Engine cooling system	closed keelcooling
Drive	shaft
Engine controls	bowden cable
Gearbox	hydraulic Marine Transmissions



Bowthruster	electric Vetus TSL150kgf 24v
Thrust bearing	Python (2020)
Propeller type	fixed
Propeller blades	4
Propeller shaft material	stainless steel
Shaft lubrication	grease
Electric bilge pump	(2021)
Electrical installation	24/220v
Generator	dry exhaust Deif/Mitsubishi 16kW
Batteries	(2018-2020)
Start battery	2 x 12v
Service battery	4 x 12v
Generator battery	1 x 12v
Battery charger	Victron 12v/30amp
Battery charger/inverter	Victron 24v/3000watt/70amp
Solar panel	4 x 325wp (2020)
Shorepower	with cable
Insulation transformer	Victron 3600i

NAVIGATION

Depth sounder	Raymarine ST40
VHF	Sailor RT6248(2020)
Radar	Simrad (2020)
GPS	Simrad (2020)
Plotter	Simrad (2020)
Electronic chart(s)	1 x
AIS transponder	Simrad Nais-500 Class B (2020)
Camera	For engine room
Navigation lights	yes

EQUIPMENT



Sun awning	For aft deck
Cockpit table	(optional)
Cockpit chairs	(optional)
Bathing platform	yes
Boarding ladder	stainless steel
Transom door	yes
Anchor	Pool (stainless steel)
Anchor chain	Approx 25 mtr
Windlass	manual
Sea railing	stainless steel
Grab rail (superstructure)	
Railing side opening gates	2 x
Pushpit	yes
Pulpit	yes
Wiper	1 x
Horn	electric
Fenders	yes
Mooring lines	yes
TV	(optional)
Fire extinguisher	3 x
Latest extinguisher survey	(2020)
Extinguisher in engine room	(2020)



SPIEGELKOTTER 1500



SPIEGELKOTTER 1500



SPIEGELKOTTER 1500



SPIEGELKOTTER 1500



SPIEGELKOTTER 1500



SPIEGELKOTTER 1500



SPIEGELKOTTER 1500



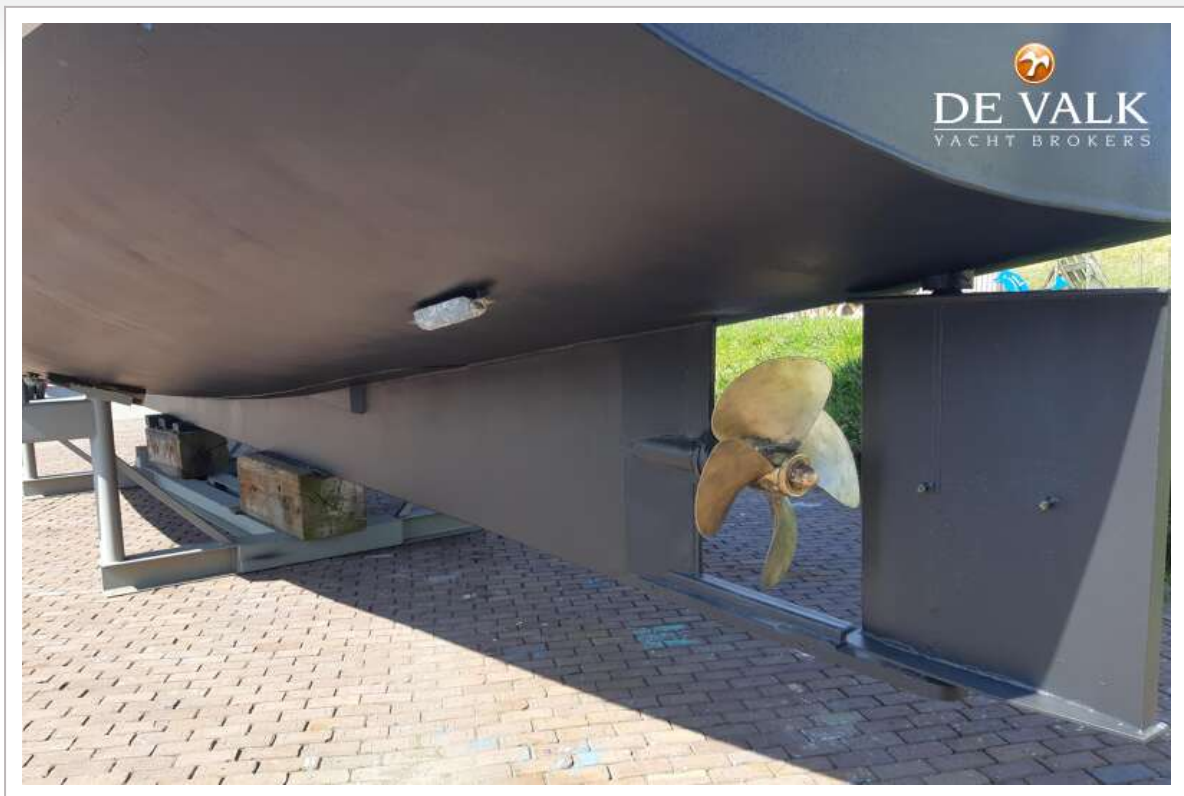
SPIEGELKOTTER 1500



SPIEGELKOTTER 1500



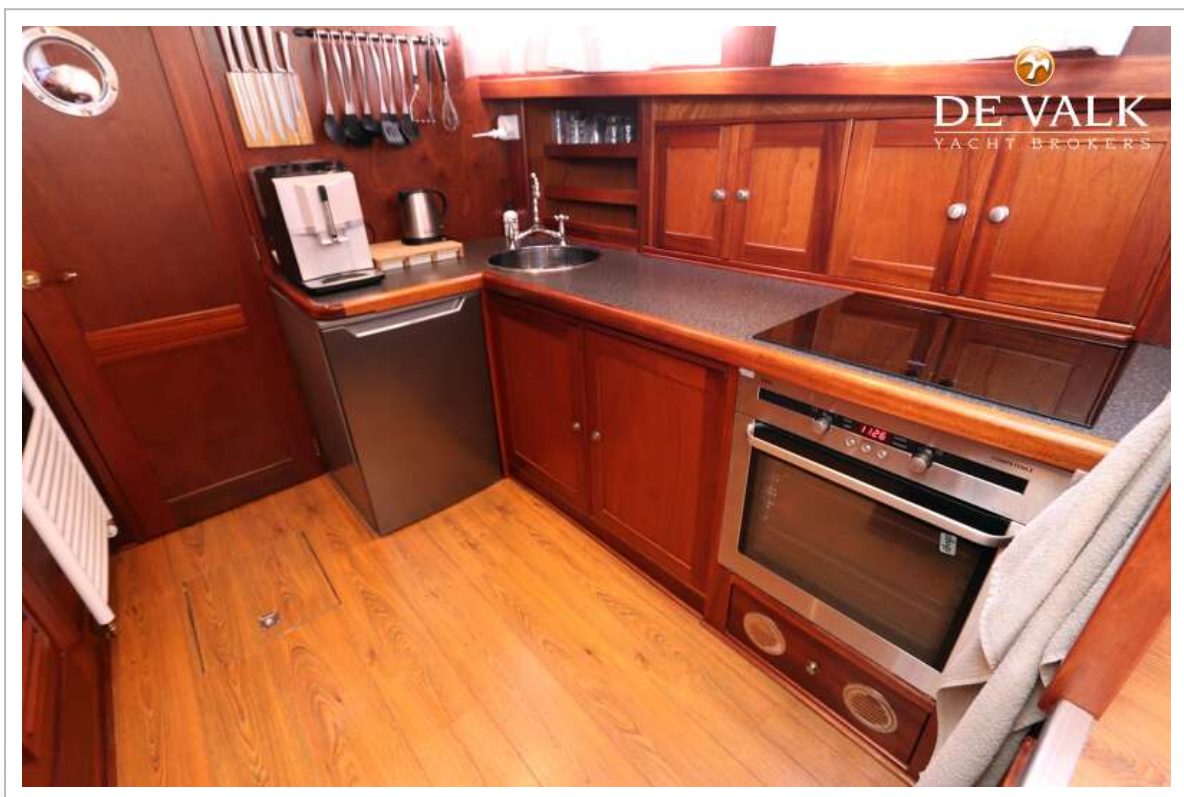
SPIEGELKOTTER 1500



SPIEGELKOTTER 1500



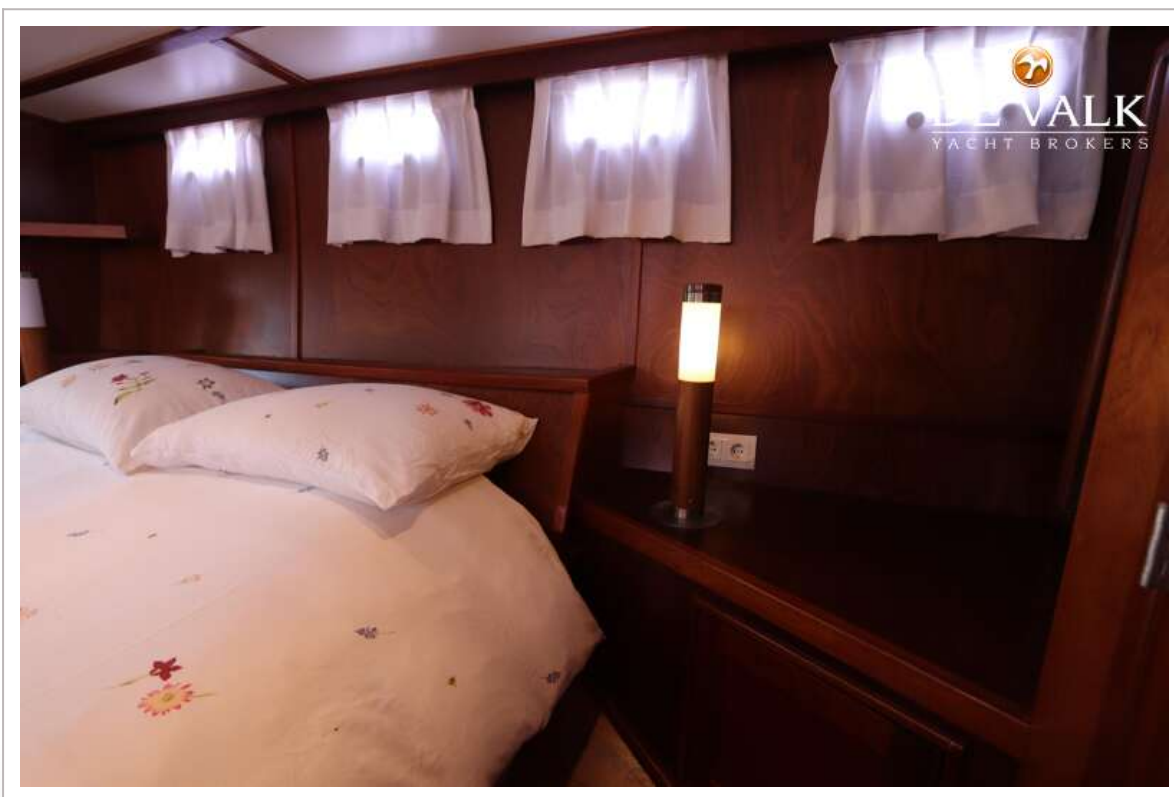
SPIEGELKOTTER 1500



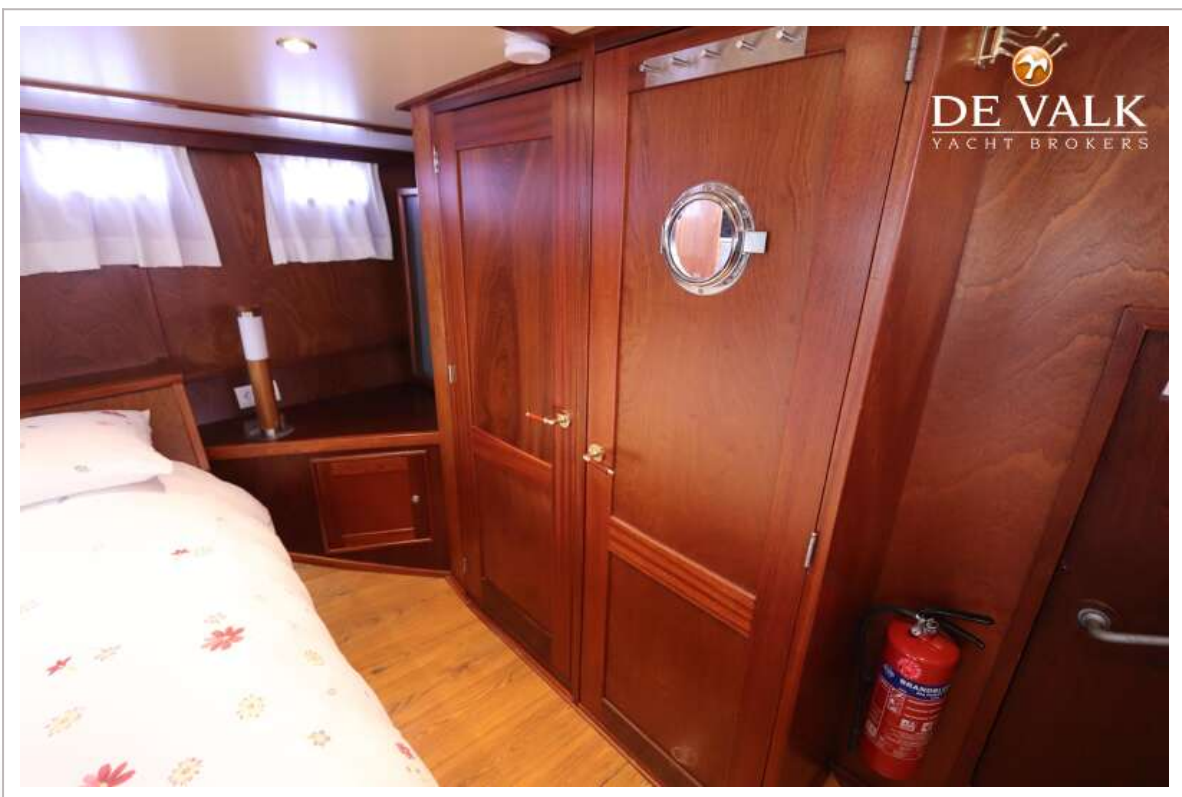
SPIEGELKOTTER 1500



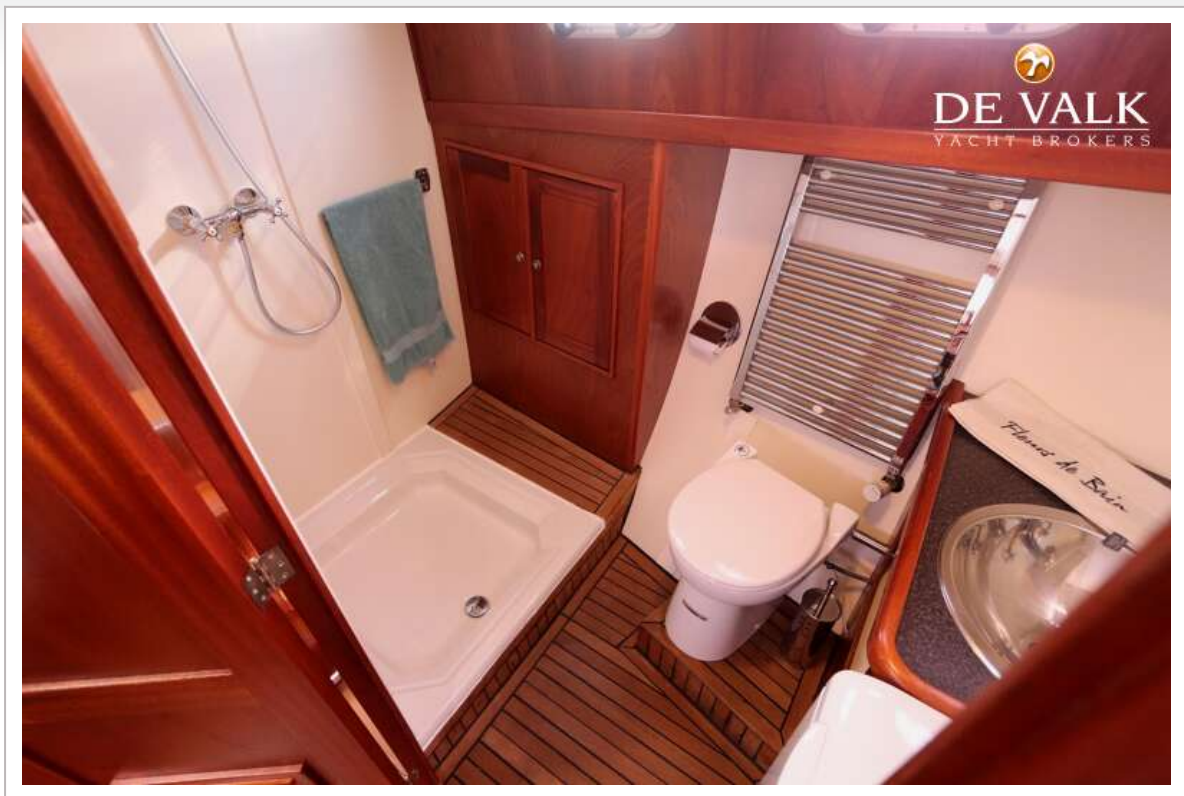
SPIEGELKOTTER 1500



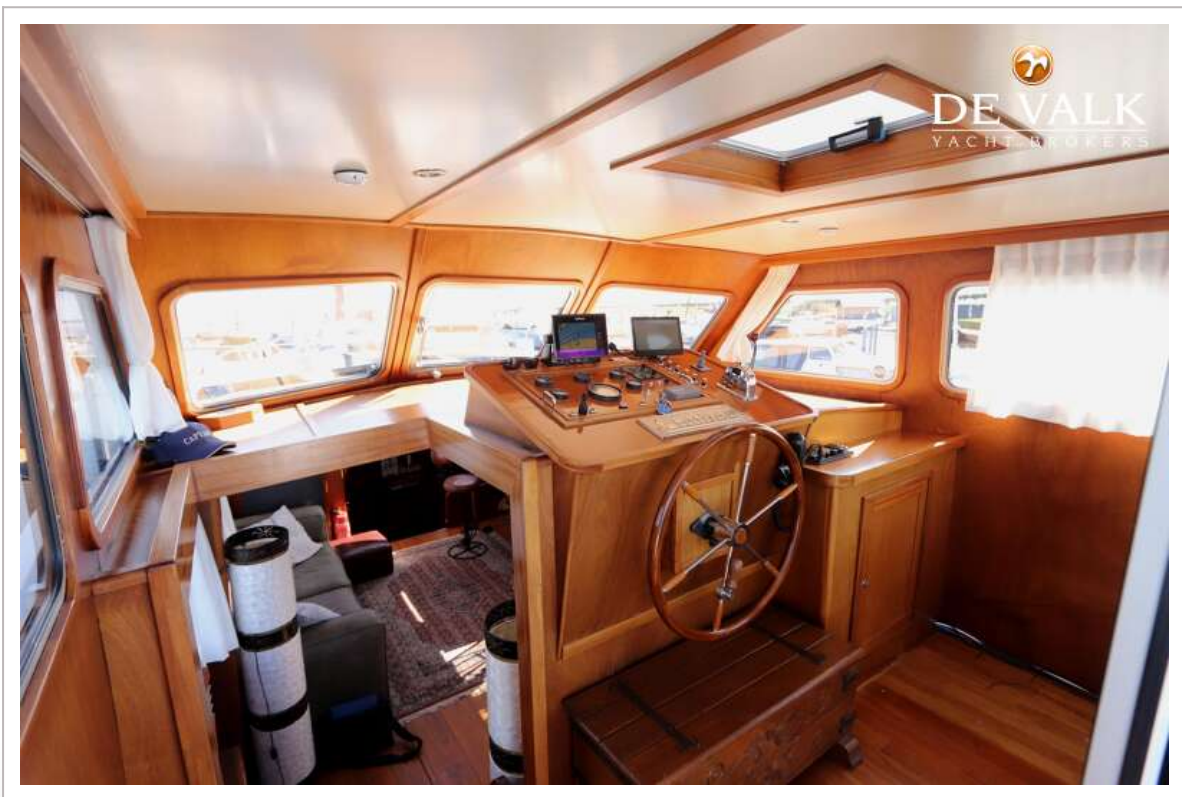
SPIEGELKOTTER 1500



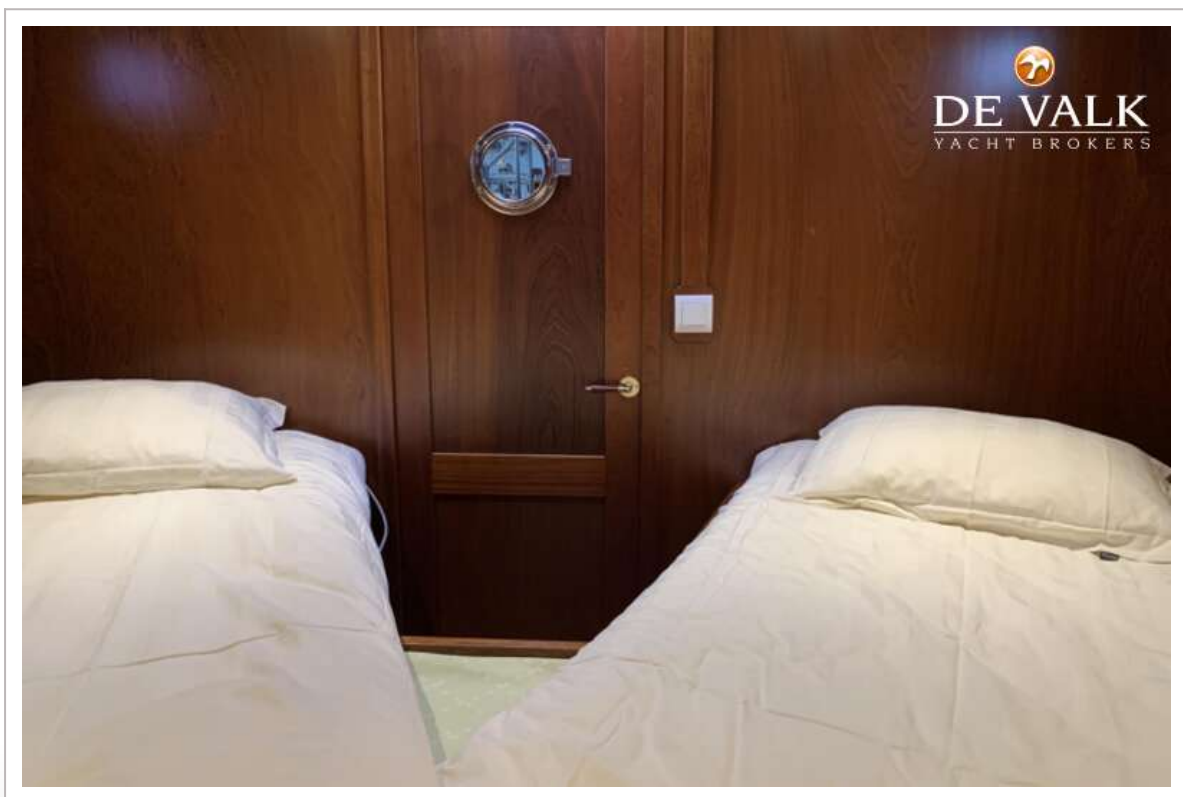
SPIEGELKOTTER 1500



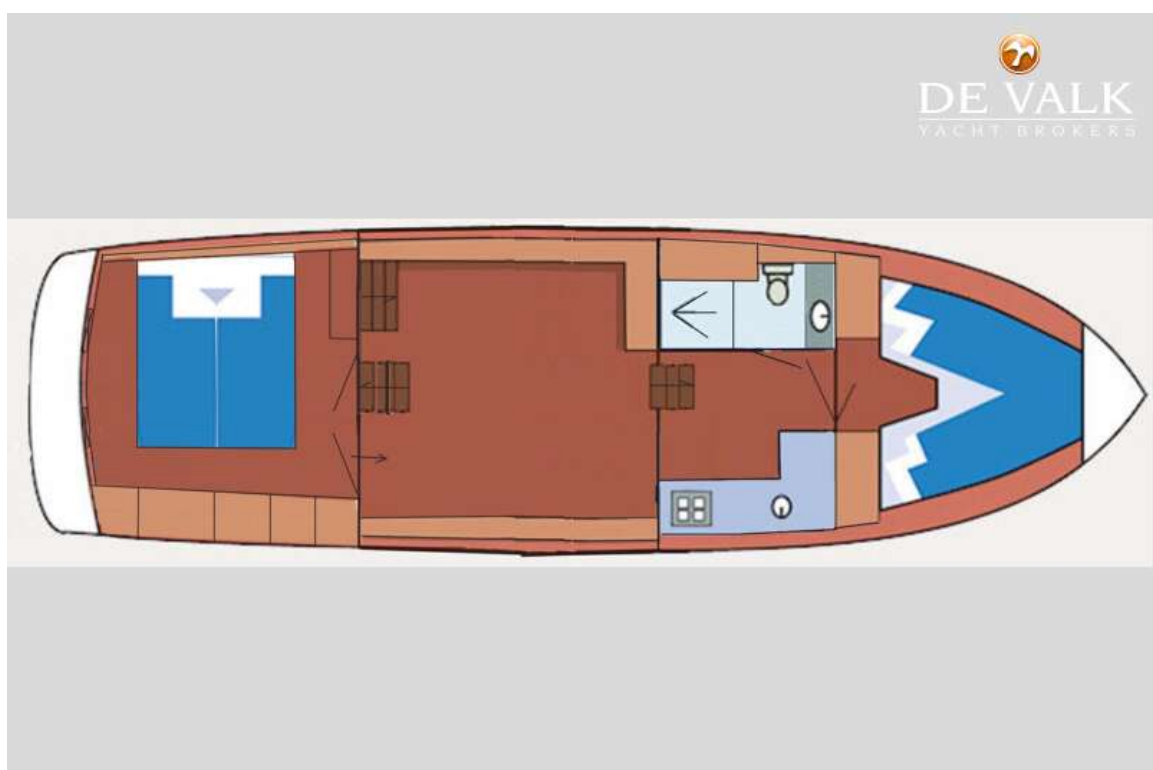
SPIEGELKOTTER 1500



SPIEGELKOTTER 1500



SPIEGELKOTTER 1500



SPIEGELKOTTER 1500



SPIEGELKOTTER 1500

