



DE VALK
YACHT BROKERS



ABSOLUTE 52 FLY



DE VALK
YACHT BROKERS

ABSOLUTE 52 FLY

BROKER'S COMMENTS

This Absolute is spacious on the aft deck, fly bridge and bow area. You will find an incorporated hide away grill on the stern in order to grill from the hydraulic bathing platform. The salon with an open galley, between the dining area and aft deck, has an intelligent layout, and a simple and light design. The 3 cabins are spacious in design and layout. All the systems are fully revised as per service books. You will find the vessel turn key ready for the season. Fully equipped with water maker, sea keeper and much more. As new. VAT to be added when buying private.

Tue Simon Fasting

SPECIFICATIONS

Dimensions	15.90 x 4.65 x 2.40 (m)	Builder	Absolute yachts
Built	2017	Cabins	3
Material	GRP	Berths	6
Engine(s)	2 x Volvo Penta D8 IPS 700 diesel	Hp/Kw	2 x 410.00 (hp), 301.35 (kw)
Asking price	sold (VAT)	Lying	at sales office

CONTACT

Sales office	De Valk Barcelona	Telephone	+34 932 202 825
Address	Barcelona region 08392 Barcelona ES	E-mail	barcelona@devalk.nl

DISCLAIMER

These particulars are given in good faith as supplied but cannot be guaranteed.



ABSOLUTE 52 FLY

GENERAL

Model	ABSOLUTE 52 FLY
Type	motor yacht
LOA (m)	15,90
Beam (m)	4,65
Draft (m)	2,40
Year built	2017
Builder	Absolute yachts
Displacement (t)	28
Hull material	GRP
Deck finish	teak
Antifouling (year)	2021
Window frame	stainless steel
Window material	glass
Flybridge	Yes
Fuel tank (litre)	stainless steel 1600
Level indicator (fuel tank)	Yes
Freshwater tank (litre)	stainless steel 500
Level indicator (freshwater)	Yes
Blackwater tank (litre)	150
Level indicator (blackwater)	Yes
Blackwater tank extraction	pump
Wheel steering	hydraulic

ACCOMMODATION

Cabins	3
Berths	6
Crew cabin	1
Crew berths	2
Interior	birch
Floor	parquet



ABSOLUTE 52 FLY

Air-conditioning	reverse cycle airco
Chart table	Yes
Aft Cabin	Yes
Countertop	corian
Sink	stainless steel
Cooker	electric EuroKera
Microwave/oven combi	Bosch
Fridge	Large Vitrifrigo
Freezer	Vitrifrigo
Wine cooler	Vitrifrigo
Hot water system	on central heating
Water pressure system	electrical
Dishwasher	Bosch Silence Plus
Kettle	GFerrari
Ice maker	Vitrifrigo
Coffee maker	Krups
Crockery	Included
Owners cabin	double bed
Wardrobe	hanging/drawers/shelves
Bathroom	en suite
Toilet system	electric
Guest cabin 1	double bed
Wardrobe	hanging/drawers/shelves
Bathroom	shared
Guest cabin 2	twin single
Wardrobe	hanging/drawers/shelves
Bathroom	shared
Washing machine/dryer combi	Yes

MACHINERY

No of engines	2
---------------	---



ABSOLUTE 52 FLY

Make	Volvo Penta
Type	D8 IPS 700
HP	410
kW	301,35
Fuel	diesel
Year installed	2017
Year of overhaul	2031
Maximum speed (kn)	28
Cruising speed (kn)	22
Consumption (l/hr)	160
Engine hours	890
Engine cooling system	seawater
Engine controls	electrical
Gearbox	mechanical
Bowthruster	electric
Exhaust	watercooled
Propeller shaft material	stainless steel
Electric bilge pump	Yes
Bilge alarm	Yes
Generator	wet exhaust Mase IS 12B -10,2KW
Running hours generator	2190
Batteries	New 2020
Start battery	New 2021
Inverter	Kunzel New 2020
Shorepower	with cable
Watermaker	Idramar
Stabilizers	0-speed Seakeeper 6
Trimtabs	Hydraulic

NAVIGATION

Compass	Ritchie
---------	---------



ABSOLUTE 52 FLY

Electric compass	Included
Multi control display	Garmin
Depth sounder	Garmin
VHF	Garmin GHS 10i
Autopilot	Volvo Penta
Radar	Garmin
GPS	Garmin
Plotter/GPS	Garmin GpsMap 7416
AIS receiver	Garmin
AIS transponder	Garmin
EPIRB	Included
Navigation lights	Yes

EQUIPMENT

Bimini	On fly deck
Winter cover	For fly bridge control
Bathing platform	Hydraulic
Boarding ladder	stainless steel Yes
Gangway	Bezenconi
Deck shower	Yes
Anchor	Delta 40 kg
Chain counter	Yes
Windlass	electrical
Capstan	2 electrical
Sea railing	stainless steel
Grab rail (superstructure)	stainless steel
Life raft	container
Lifejackets	Included
Fenders	Included
TV	Samsung Flat screen
TV receiver	Cruiser Digital



ABSOLUTE 52 FLY

Radio

DVD player

iPod connection

Cockpit speakers

Speakers in salon

Extra info

Extra info

Fusion

Samsung

Fusion

Fusion

Fusion

BBQ on the aft platform

Extra fridge on fly bridge



ABSOLUTE 52 FLY



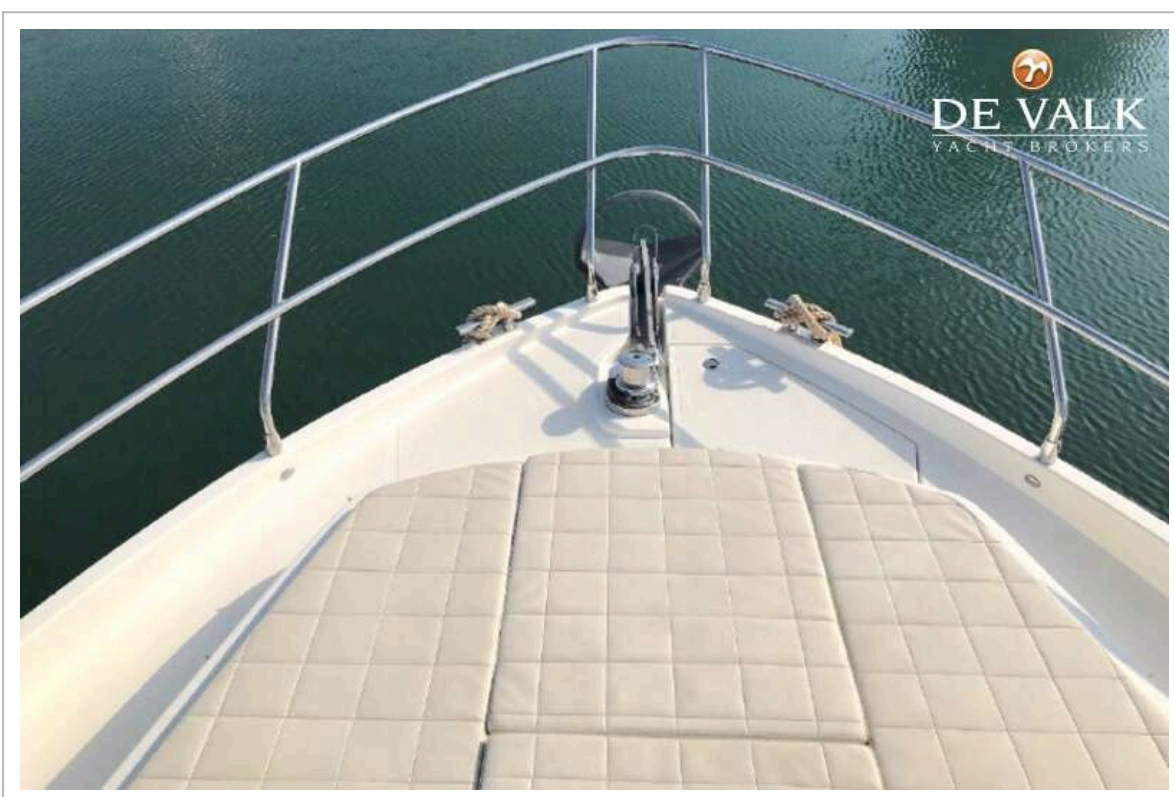
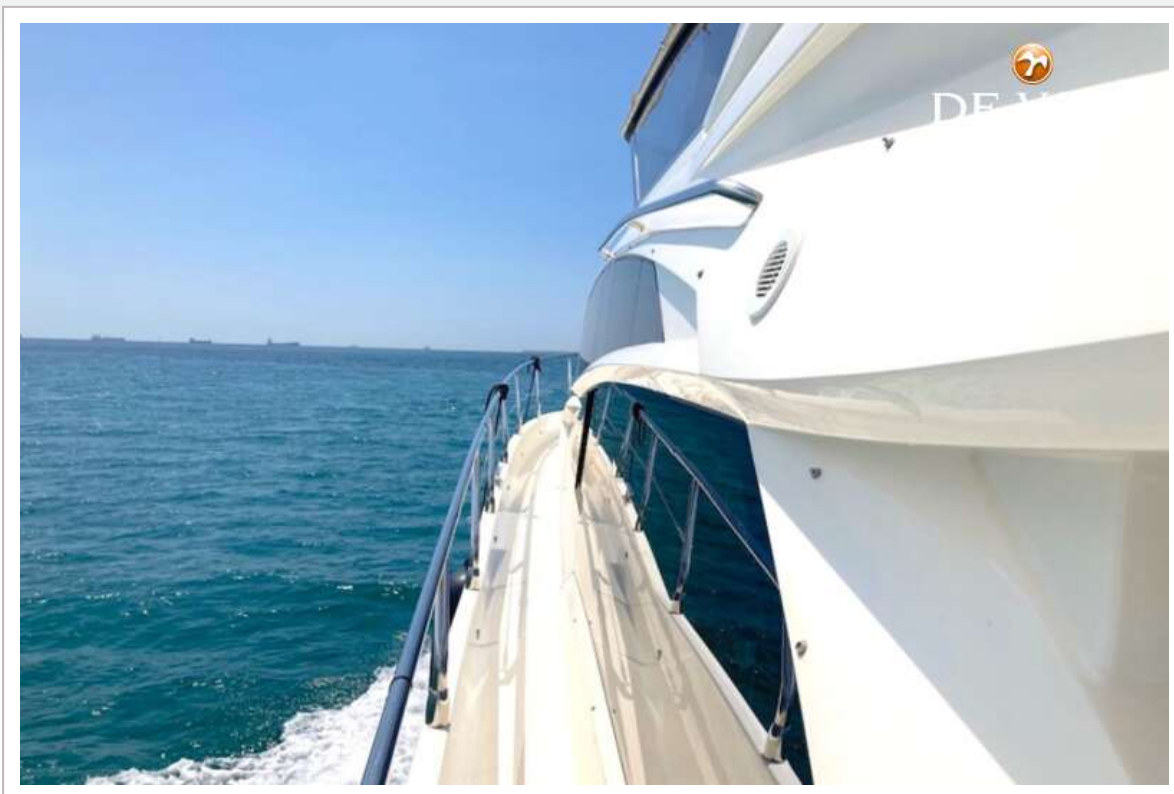
ABSOLUTE 52 FLY



ABSOLUTE 52 FLY



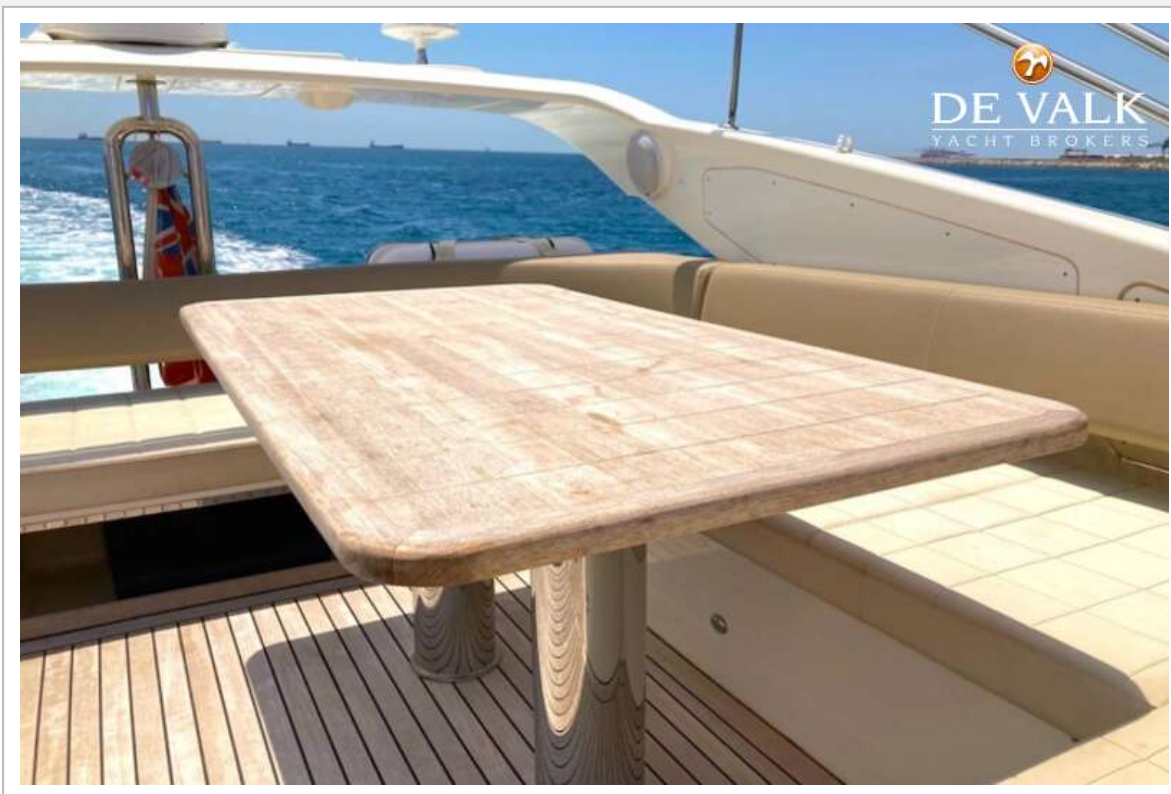
ABSOLUTE 52 FLY



ABSOLUTE 52 FLY



ABSOLUTE 52 FLY



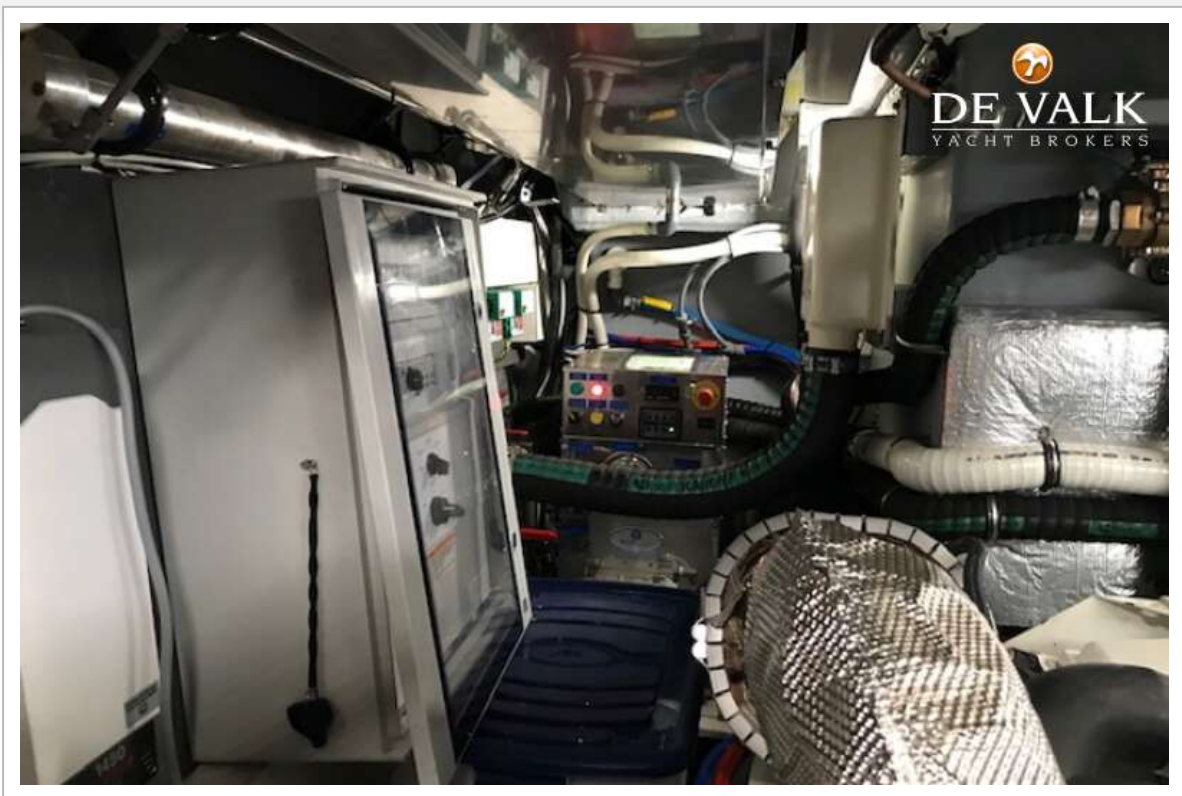
ABSOLUTE 52 FLY



ABSOLUTE 52 FLY



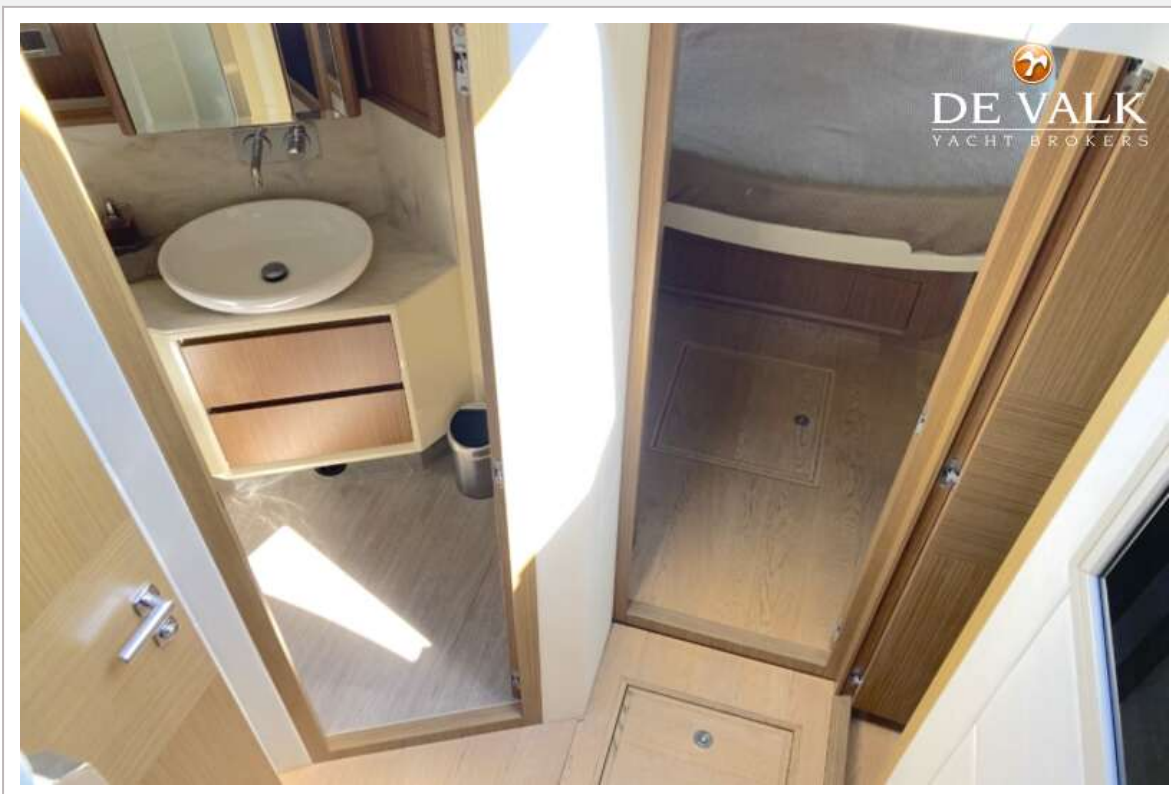
ABSOLUTE 52 FLY



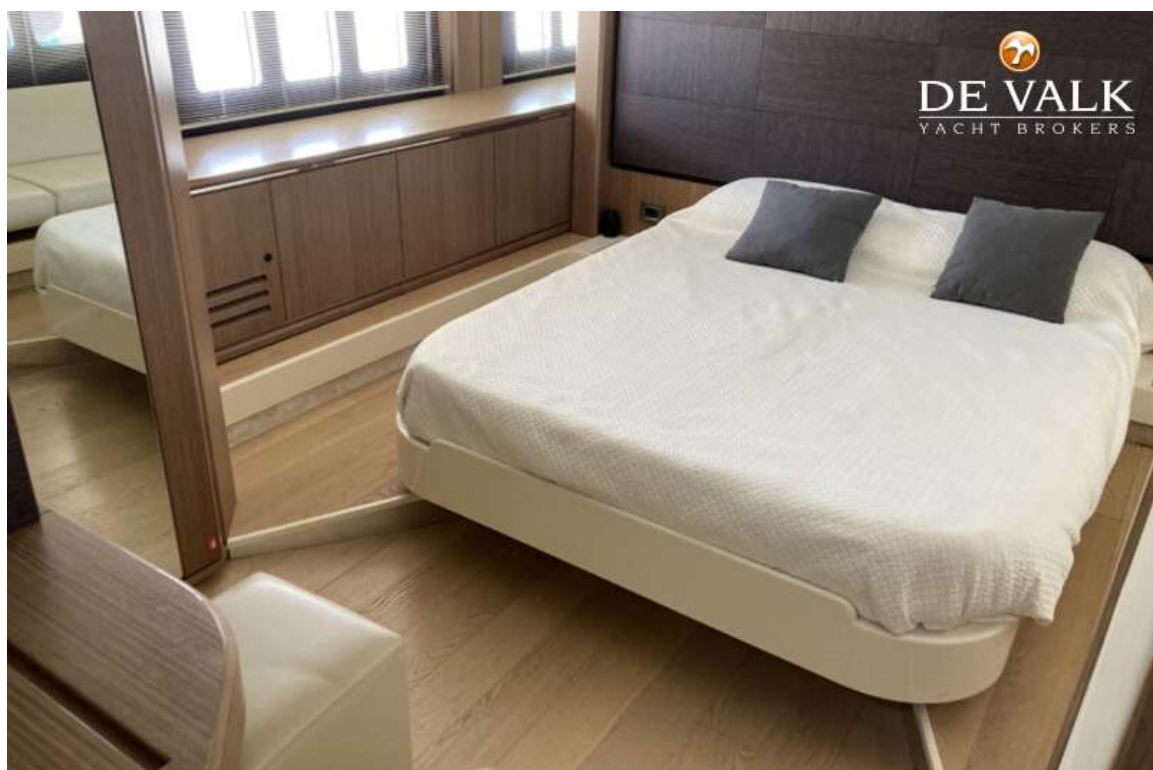
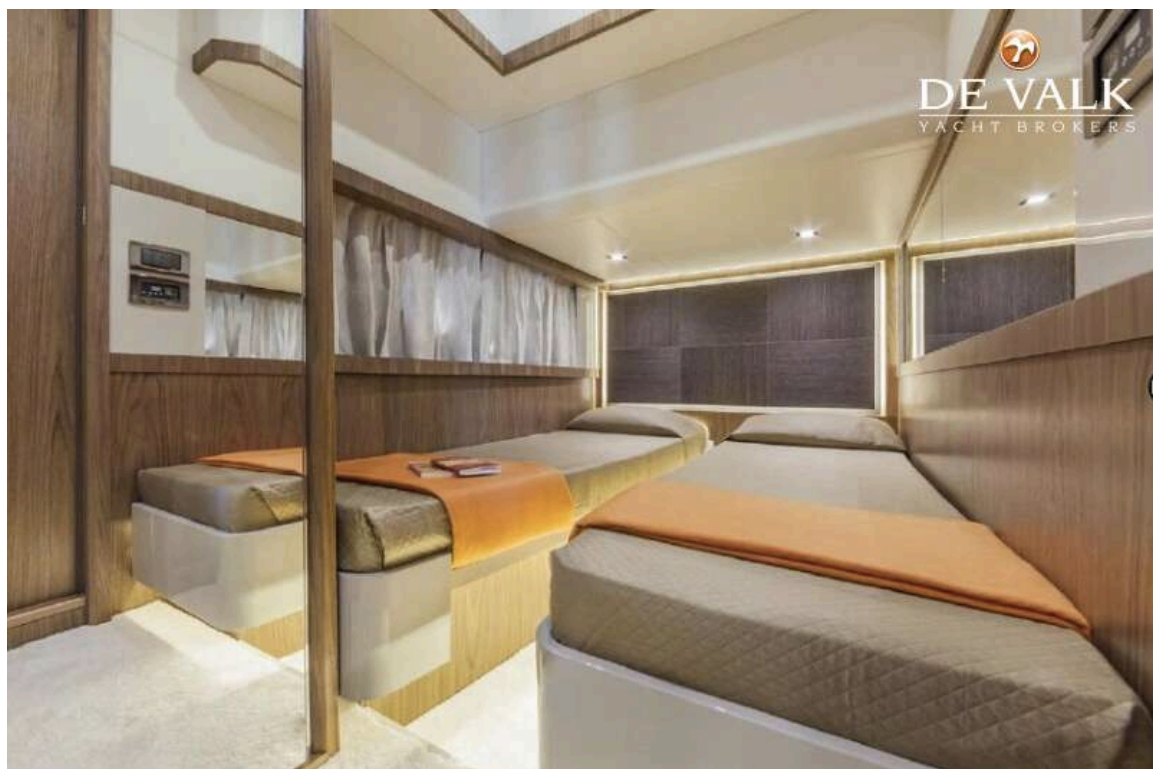
ABSOLUTE 52 FLY



ABSOLUTE 52 FLY



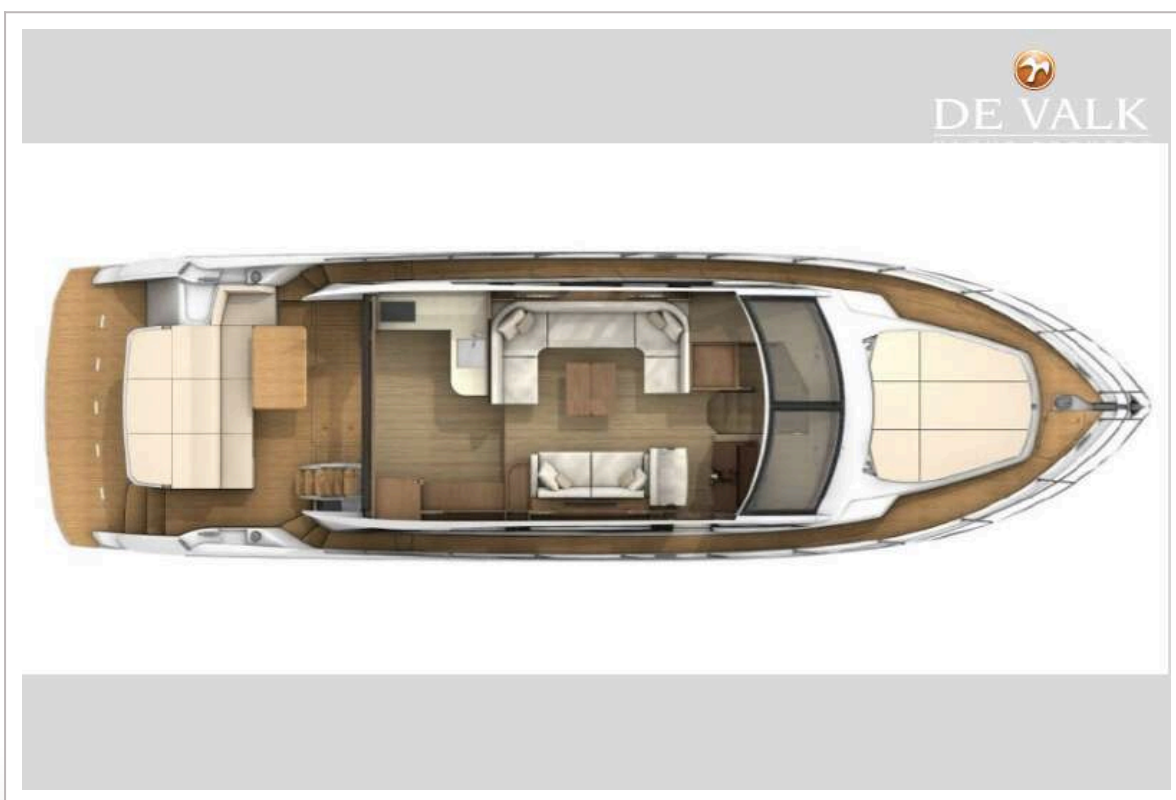
ABSOLUTE 52 FLY



ABSOLUTE 52 FLY



ABSOLUTE 52 FLY



ABSOLUTE 52 FLY

