



DE VALK
YACHT BROKERS



BAVARIA 46 CRUISER



DE VALK
YACHT BROKERS

BAVARIA 46 CRUISER

BROKER'S COMMENTS

This Bavaria 46 Cruiser, designed by J&J has an excellent sail performance and handling. The four cabin layout makes her an ideal ship for larger families who are looking for space together with comfort whilst tall people will enjoy the 2.10m. headroom in the salon. 'Cadans' comes with a spacious galley, bowthruster, diesel heating, twin steering wheels, powerful engine and a good list over electronics equipment. For a arranging a viewing, please feel free to contact our office 7 day s a week.

Reinier van der Wolf

SPECIFICATIONS

Dimensions	14.20 x 4.36 x 2.04 (m)	Builder	Bavaria Yachtbau GmbH, Giebelstadt
Built	2005	Cabins	4
Material	GRP	Berths	8
Engine(s)	1 x Volvo Penta D2-75 diesel	Hp/Kw	75.00 (hp), 55.13 (kw)
Asking price	sold (VAT)	Lying	elsewhere / Not at sales office

CONTACT

Sales office	De Valk Monnickendam B.V.	Telephone	+31 (0)299 65 63 50
Address	Hoogedijk 6 1145 PM Katwoude NL	E-mail	monnickendam@devalk.nl

DISCLAIMER

These particulars are given in good faith as supplied but cannot be guaranteed.



BAVARIA 46 CRUISER

GENERAL

Model	BAVARIA 46 CRUISER
Type	sailing yacht
LOA (m)	14,20
LWL (m)	12,22
Beam (m)	4,36
Draft (m)	2,04
Air draft (m)	19,20
Headroom (m)	2,10
Year built	2005
Builder	Bavaria Yachtbau GmbH, Giebelstadt
Country	Germany
Designer	J & J Design
Displacement (t)	11
Ballast (tonnes)	lead
CE norm	A
Hull material	GRP
Hull colour	white
Hull shape	round-bilged
Keel type	fin keel
Superstructure material	GRP
Rubbing strake	wood
Deck material	GRP
Deck finish	non-skid moulded in
Superstructure deck finish	non-skid moulded in
Cockpit deck finish	teak
Antifouling (year)	2021
Dorades	1
Window frame	aluminium
Window material	polycarbonate
Deckhatch	4



BAVARIA 46 CRUISER

Fuel tank (litre)	polyethylene 208
Level indicator (fuel tank)	yes
Freshwater tank (litre)	polyethylene 460
Level indicator (freshwater)	yes
Blackwater tank (litre)	polyethylene 2x 35
Blackwater tank extraction	deck extraction + pump
Wheel steering	mechanical With leather
Emergency tiller	s/s
More info on hull	Keel attachment reinforcement and sealing (2017) Reason: Seller bought the boat and during its pre-buy survey it was discovered a little impact at the front bottom angle of the lead keel. After a few months of use the seller discovered that the keel was not so watertight as it should be. So a Dutch Yacht service company removed the keel and took the opportunity to nicely reinforce its attachment with the steel plates that shown in the picture.
Extra info	new rudder lower bearing (2021)

ACCOMMODATION

Cabins	4
Berths	8
Interior	mahogany
Floor	teak and holly
Saloon	yes
Headroom saloon (m)	2,10
Heating	diesel ducted hot air Webasto 5000
Chart table	yes
Aft Cabin	2
Galley	U-shape
Countertop	corian
Sink	stainless steel Double
Cooker	calor gas 3 burner
Oven	yes



BAVARIA 46 CRUISER

Fridge	Coolmatic
Hot water system	220V + engine Boiler
Water pressure system	electrical
Owners cabin	French bed Front
Bed length (m)	2,10
Wardrobe	hanging and shelves
Bathroom	shared
Toilet	shared
Toilet system	manual
Wash basin	at the toilet
Shower	shared
Guest cabin 1	bunk bed Midship
Bed length (m)	2,10
Wardrobe	hanging
Bathroom	shared
Toilet	shared
Toilet system	manual
Wash basin	at the toilet
Shower	shared
Guest cabin 2	double bed Aftship
Bed length (m)	2,10
Wardrobe	hanging and shelves
Bathroom	shared
Toilet	shared
Toilet system	manual
Wash basin	at the toilet
Shower	shared
Guest cabin 3	double bed Aftship
Bed length (m)	2,10
Wardrobe	hanging and shelves



BAVARIA 46 CRUISER

MACHINERY

No of engines	1
Make	Volvo Penta
Type	D2-75
HP	75
kW	55,13
Fuel	diesel
Year installed	2005
Maximum speed (kn)	7
Cruising speed (kn)	6
Consumption (l/hr)	3
Engine hours	1600
Engine cooling system	freshwater heat exchanger
Drive	sail-drive
Saildrive seal	October 2016
Engine controls	mechanical
Bowthruster	electric SP-95 (overhaul 2021)
Exhaust	watercooled
Propeller type	fixed
Propeller blades	3
Manual bilge pump	yes
Electric bilge pump	yes
Generator	wet exhaust Mastervolt 2kw
Running hours generator	Approx: 200
Start battery	(2021)
Service battery	(2021)
Bowthruster battery	(2021)
Battery monitor	yes
Battery charger/inverter	Mastervolt Mass Combi with remote control (2021)
Solar panel	Photo voltaic panel
Shorepower	with cable



BAVARIA 46 CRUISER

NAVIGATION

Compass	2x Plastimo Olympic 135
Electric compass	Raymarine ST 6001 smart pilot
Depth sounder	Raymarine ST 60
Log	Raymarine ST60 Tridata
Windset	Raymarine ST60 Wind
Repeater	Raymarine ST60 Wind Raymarine ST60 Wind Raymarine ST60 Wind
VHF	25w
VHF handheld	Raymarine
Autopilot	Raymarine ST 6001
Rudder angle indicator	Raymarine
Radar/GPS/plotter	Raymarine
Navtex	ICS Nav 6 plus
AIS receiver	yes
AIS transponder	yes
EPIRB	yes

EQUIPMENT

Sprayhood with grab rail	yes
Bimini	(2020)
Cockpit table	yes
Bathing platform	yes
Boarding ladder	stainless steel
Bow ladder	yes
Anchor	CQR Plough
Anchor chain	10mm/50m.
Anchor 2	Fortress
Windlass	electrical
Dinghy	2020
Outboard	yes



BAVARIA 46 CRUISER

Outboard support	yes
Sea railing	wire
Grab rail (superstructure)	stainless steel
Railing side opening gates	yes
Pushpit	S/s
Pulpit	S/s
Life raft	Seago
Radar reflector	Tri-lens
Fenders	yes
Mooring lines	yes
TV	yes
Radio-cd player	Bluepunkt
Cockpit speakers	1 speaker in regards of the VHF
Speakers in salon	yes
Clock - barometer	yes
Fire extinguisher	yes

RIGGING

Rigging	sloop
Standing rigging	wire Original
Brand mast	Seldén
Material mast	aluminium
Spreaders	yes
Fully battened mainsail	59m2 High Tech vertical batted
Stoway mast	yes
Genoa	High Tech 62m2 (2021)
Genoa furler	Furlex
Gennaker	hardly used 100m2
Spinnaker	hardly used 120m2
Reefing System	main in-mast furling
Backstay adjuster	mechanical



BAVARIA 46 CRUISER

Boomvang	mechanical Selden
Primary sheet winch	yes
Secondary sheet winch	2x Lewmar 40ST
Genoa sheetwinches	2x Lewmar 50ST Electric
Multifunctional winches	yes
Spi-pole	carbon
Gennaker pole	Custom made bow sprit
Extra info	cable goose neck near mast bottom (more water proof
Extra info	releasable forestay (mai 2022)



BAVARIA 46 CRUISER



BAVARIA 46 CRUISER



BAVARIA 46 CRUISER



BAVARIA 46 CRUISER



BAVARIA 46 CRUISER



BAVARIA 46 CRUISER



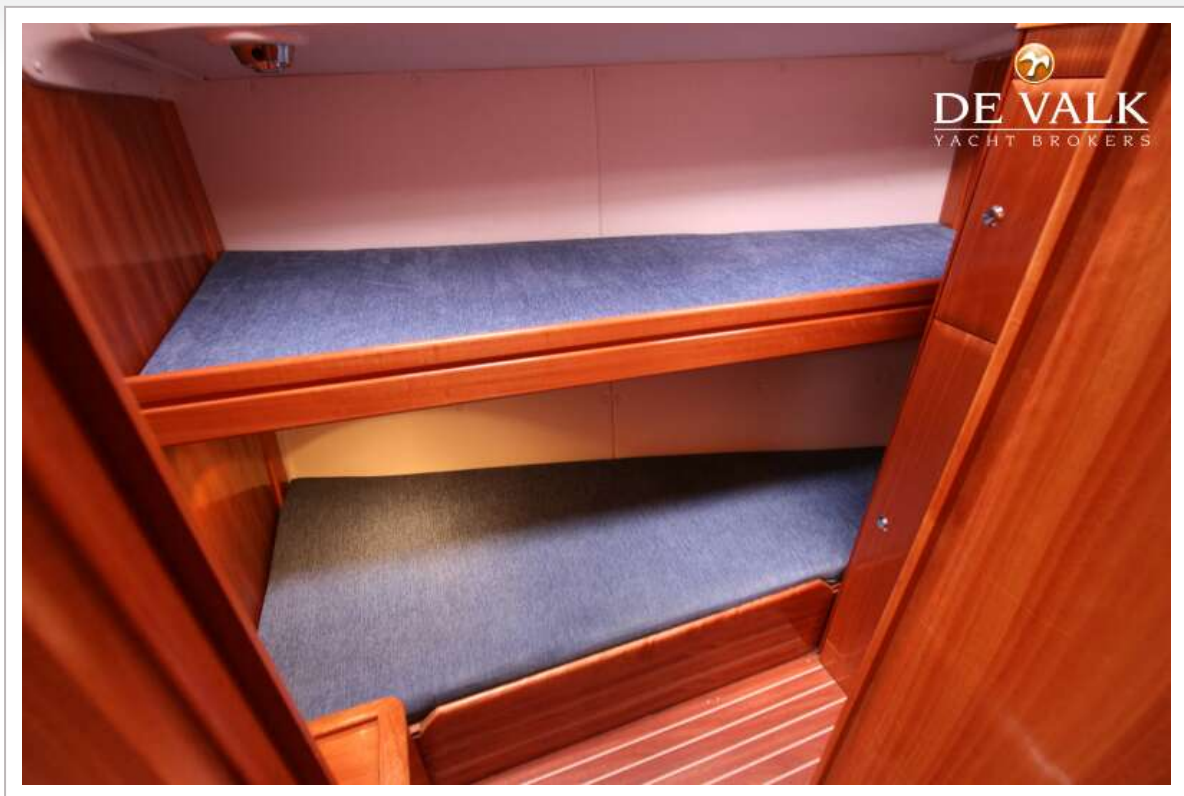
BAVARIA 46 CRUISER



BAVARIA 46 CRUISER



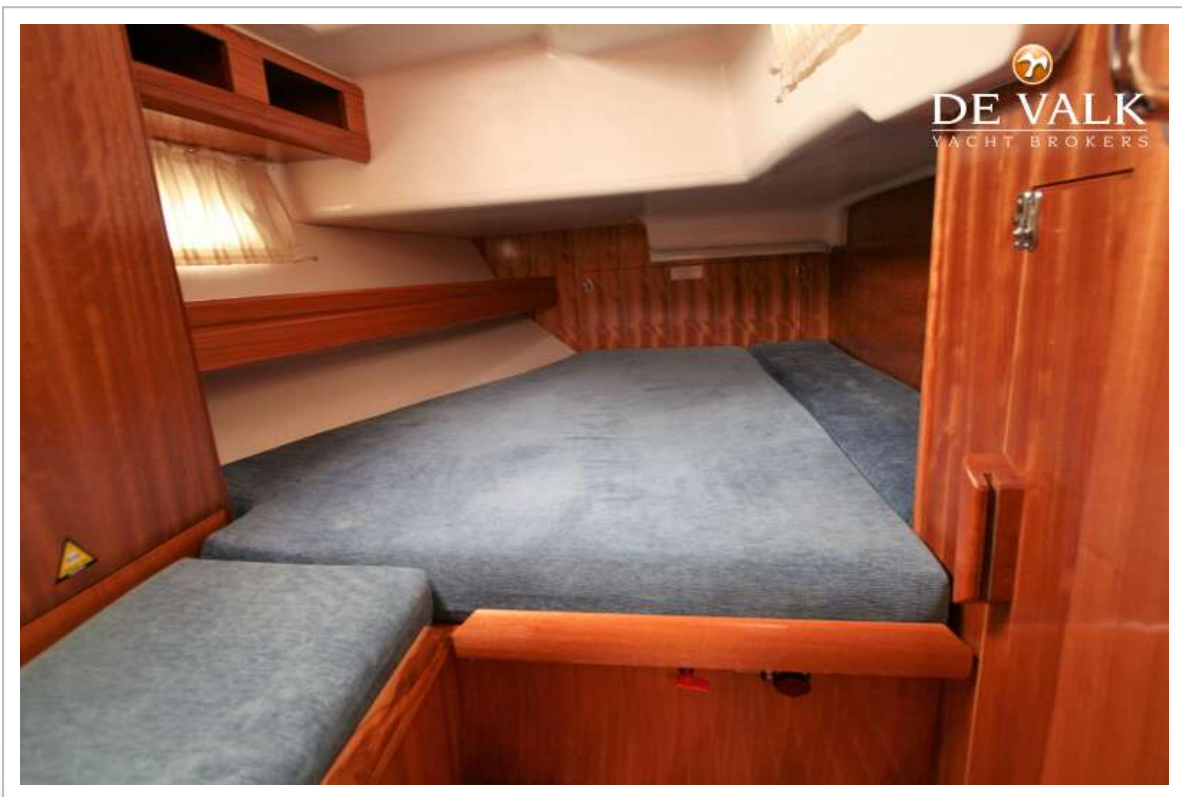
BAVARIA 46 CRUISER



BAVARIA 46 CRUISER



BAVARIA 46 CRUISER



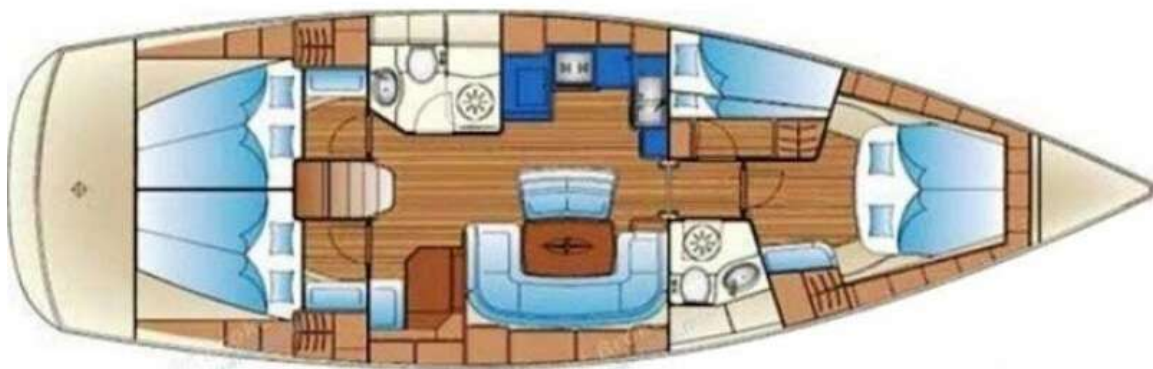
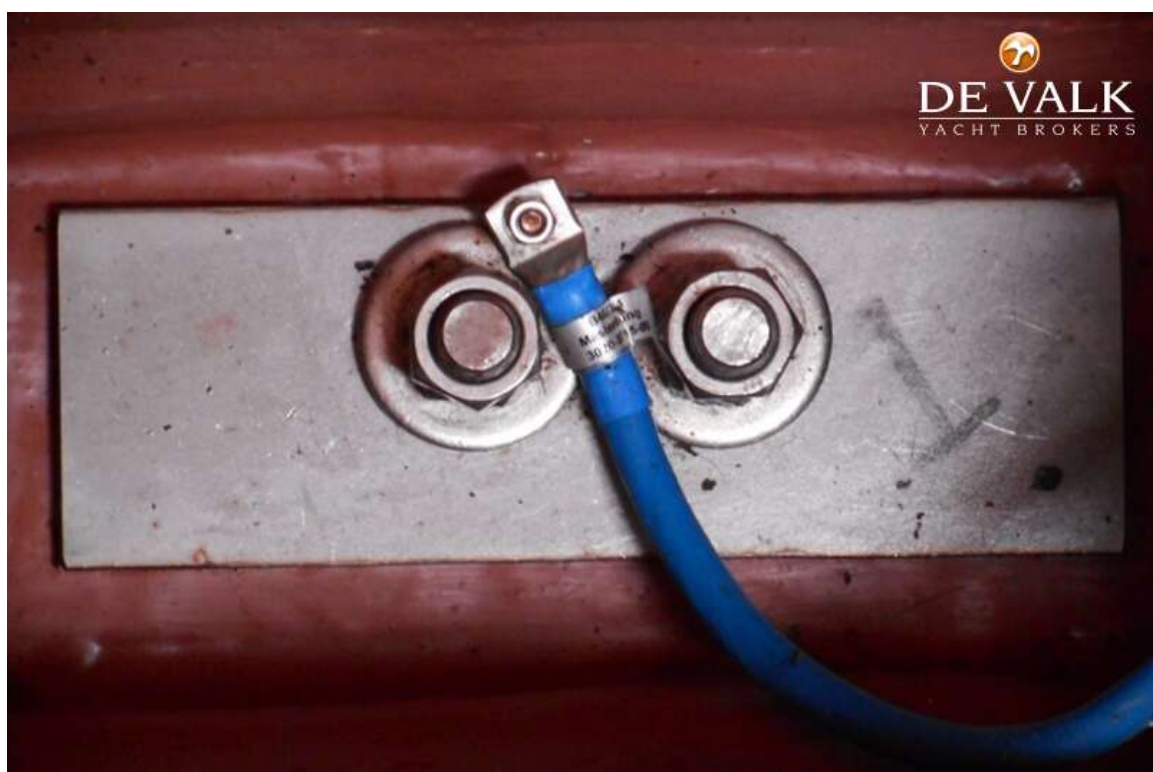
BAVARIA 46 CRUISER



BAVARIA 46 CRUISER



BAVARIA 46 CRUISER



BAVARIA 46 CRUISER

