



DE VALK
YACHT BROKERS



LUXE MOTOR 1800



DE VALK
YACHT BROKERS

LUXE MOTOR 1800

BROKER'S COMMENTS

This sturdy Luxe Motor 1800 is a perfect combination of living and travelling; The low air draft makes her ideal for the French canals. She is equipped with a lot of (storage) space, central heating, double glazing, generator and a roof full of solar panels to make your stay on board more pleasant. Are you ready for new adventures, just like this Luxe Motor 1800? Please contact us for a viewing.

Joris van de Rijt

SPECIFICATIONS

Dimensions	18.00 x 4.75 x 1.00 (m)	Builder	Sondij Almere (Casco)
Built	2001	Cabins	2
Material	Steel	Berths	6
Engine(s)	1 x John Deere 6068 DA diesel	Hp/Kw	120.00 (hp), 88.32 (kw)
Asking price	sold (VAT)	Lying	elsewhere / Not at sales office

CONTACT

Sales office	De Valk Sint Annaland	Telephone	+31 166 601 000
Address	Koelhuisweg 4 4697 RM Sint Annaland The Netherlands	E-mail	sintannaland@devalk.nl

DISCLAIMER

These particulars are given in good faith as supplied but cannot be guaranteed.



LUXE MOTOR 1800

GENERAL

Model	LUXE MOTOR 1800
Type	motor yacht
LOA (m)	18,00
LWL (m)	17,50
Beam (m)	4,75
Draft (m)	1,00
Air draft (m)	3,50
Headroom (m)	2,00
Year built	2001
Builder	Sondij Almere (Casco)
Country	The Netherlands
Designer	Euroship / Owner
Displacement (t)	50
CE norm	NA
Hull material	steel
Hull colour	green
Hull shape	flat bottom
Superstructure material	steel
Rubbing strake	steel
Deck material	steel
Deck finish	paint
Superstructure deck finish	paint
Cockpit deck finish	paint
Window frame	aluminium
Window material	double glazing
Deckhatch	6 x (Vetus)
Portholes	9 x (Vetus)
Insulation	rockwool 10 cm
Fuel tank (litre)	steel 4 x 1250
Level indicator (fuel tank)	yes



Freshwater tank (litre)	steel 2500 with epoxy coating
Level indicator (freshwater)	yes
Blackwater tank (litre)	1000
Blackwater tank extraction	pump
Wheel steering	hydraulic (joystick)

ACCOMMODATION

Cabins	2
Berths	6
Interior	teak
Floor	18 mm WBP wood with cork and laminate
Open cockpit	yes
Pilot house/deck saloon	yes
Saloon	yes
Headroom saloon (m)	2
Heating	central heating Diesel
Heating 2	central heating Electric
Galley	yes
Countertop	plastic
Sink	
Cooker	induction
Microwave/oven combi	yes
Fridge	Zanussi 270 l
Freezer	90 L
Hot water system	220V or central heating 75 liter
Water pressure system	electrical With water softner
Dishwasher	yes
Kettle	yes
Coffee maker	yes
Crockery	yes
Owners cabin	double bed



LUXE MOTOR 1800

Bed length (m)	200 x 160 cm
Wardrobe	hanging and shelves
Bathroom	shared
Toilet	shared
Toilet system	electric
Wash basin	in the bathroom
Shower	shared
Guest cabin 1	2 x single bed + 1 x double bed
Bed length (m)	200 cm
Wardrobe	hanging and shelves
Washing machine	AEG
Dryer	Baukrecht
Extra info	Weber BBQ

MACHINERY

No of engines	1
Make	John Deere
Type	6068 DA
HP	120
kW	88,32
Fuel	diesel
Year installed	2002
Maximum speed (kn)	9
Cruising speed (kn)	6
Consumption (l/hr)	4
Range (nm)	4300
Engine hours	4489
Engine cooling system	freshwater heat exchanger
Drive	shaft
Engine controls	electrical Rexroth
Gearbox	TPM twin Disc 3:1



LUXE MOTOR 1800

Bowthruster	12 Kw via hydraulic pump on engine
Sternthruster	12 Kw via hydraulic pump on engine
Exhaust	watercooled
Thrust bearing	Scatra 100
Propeller type	fixed
Propeller blades	4
Propeller shaft material	stainless steel 50 mm
Shaft lubrication	water Profiseal
Electric bilge pump	yes
Electrical installation	12V / 24V / 220V
Generator	wet exhaust Kohler TP 6252 8.5 Kw (2007)
Running hours generator	1443
Start battery	2 x 100 amp
Service battery	24 Volt 840 amp with automatic filling system (2016)
Battery charger	Mastervolt 75 amp
Inverter	Mastervolt 5000 watt + Mastervolt 1200 watt
Solar panel	2800 watt with 2 x Morningstar MPTT Regulator
Shorepower	with cable
Extra info	Extra 24 V 90 amp alternator on engine

NAVIGATION

Electric compass	Simrad
Depth sounder	Simrad
Log	yes
Windset	Vetus
VHF	Simrad
VHF handheld	Simrad
Autopilot	Simrad AP50
Rudder angle indicator	Vetus
GPS	Garmin
Navigation lights	yes



EQUIPMENT

Cockpit cover	yes
Boarding ladder	aluminum
Gangway	1 x 2,40 M + 1 x 3,60 M
Anchor	Pool 50 kg
Anchor chain	50 meter 12 mm
Windlass	electrical Vetus Titan
Davits	aluminum
Davits controls	manual
Sea railing	steel
Grab rail (superstructure)	stainless steel
Railing side opening gates	2 x
Wiper	yes
Horn	electric
Fenders	yes
Mooring lines	yes
Spare parts	yes
TV	yes
Satellite	Travelvision
Radio-cd player	Hardon/Kardon
Surround Sound System	yes
Sub-woofer	yes
Cockpit speakers	yes
Extra info	2 x 3 meter electric spud poles (2012)



LUXE MOTOR 1800



LUXE MOTOR 1800



LUXE MOTOR 1800



LUXE MOTOR 1800



LUXE MOTOR 1800



LUXE MOTOR 1800



LUXE MOTOR 1800



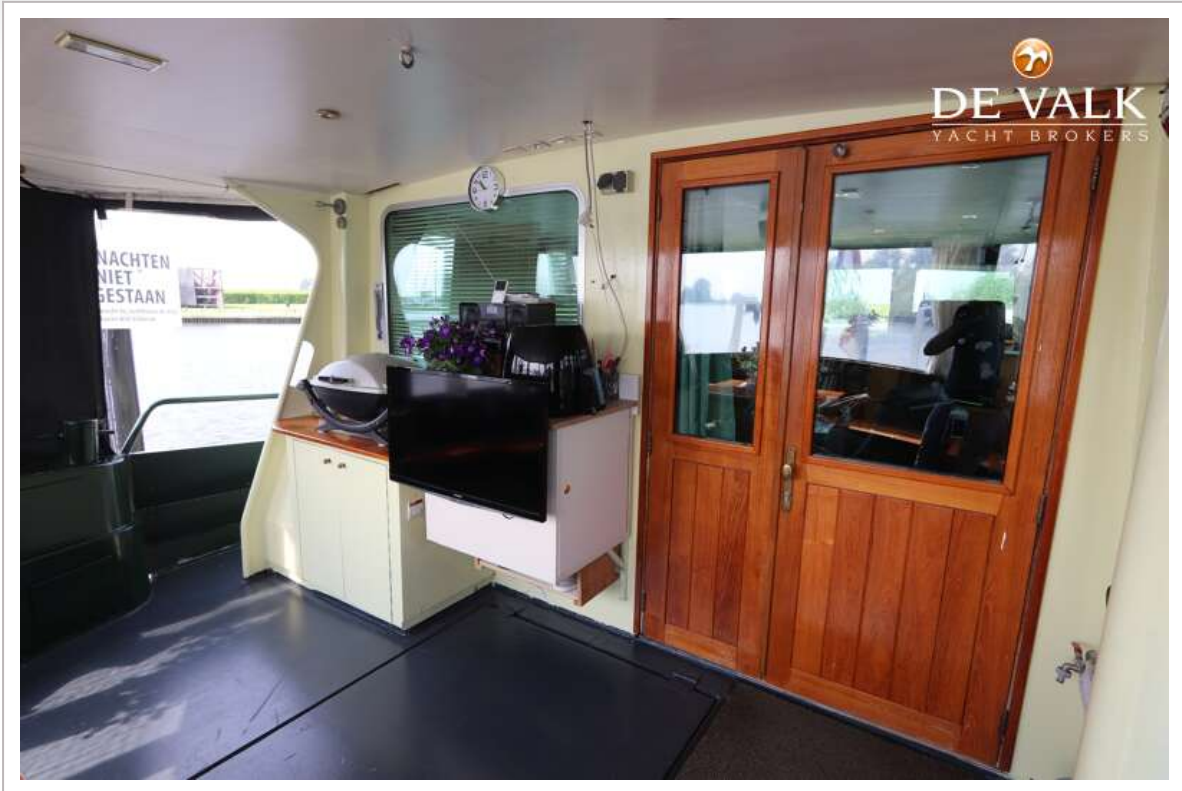
LUXE MOTOR 1800



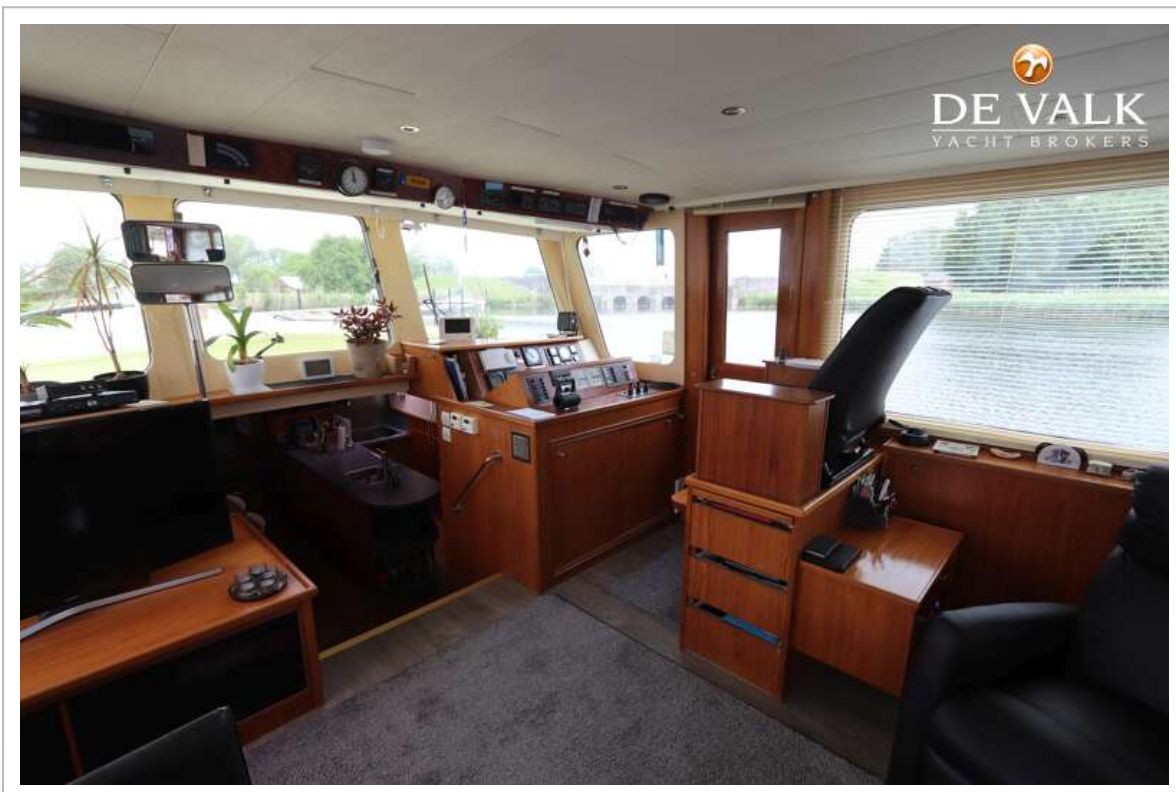
LUXE MOTOR 1800



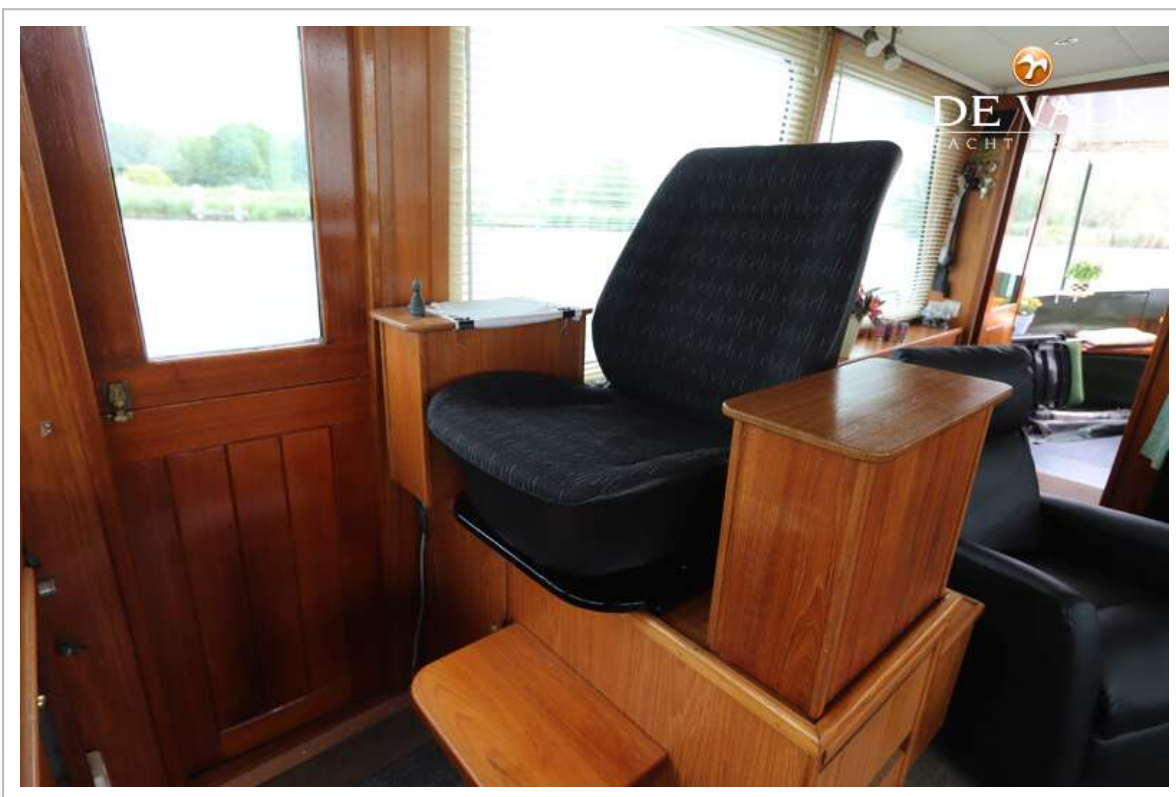
LUXE MOTOR 1800



LUXE MOTOR 1800



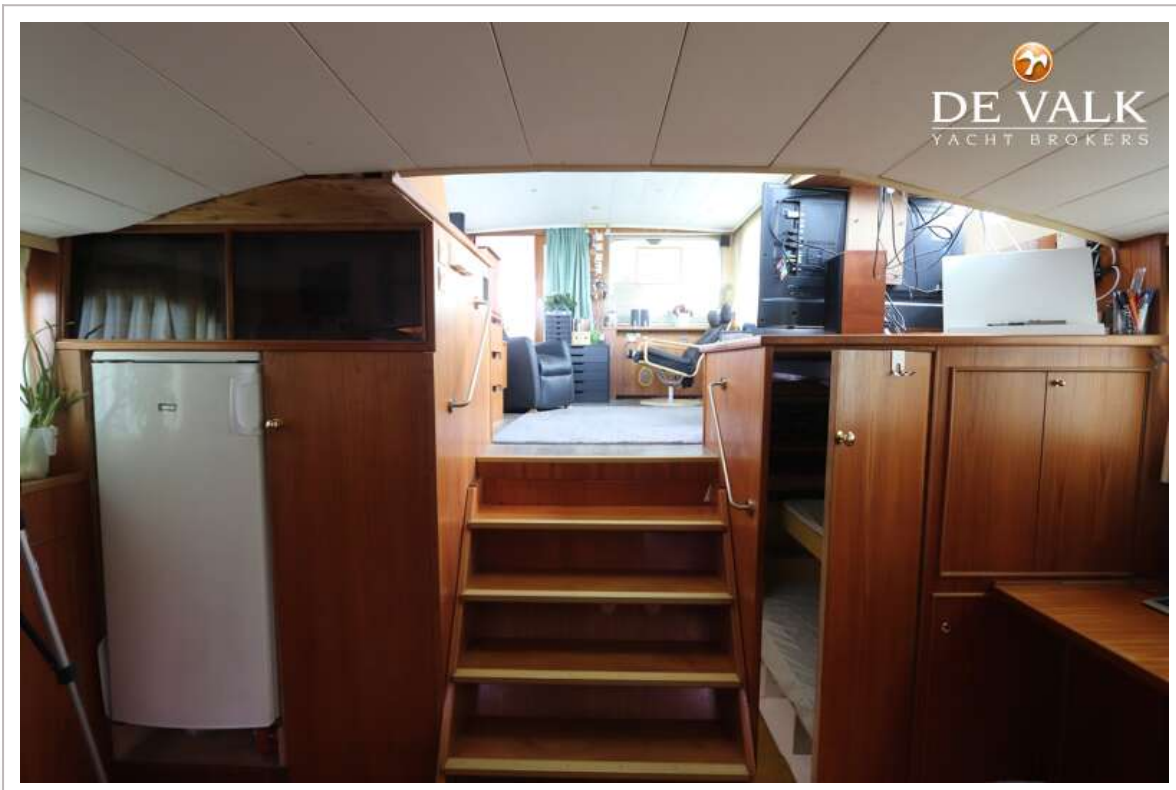
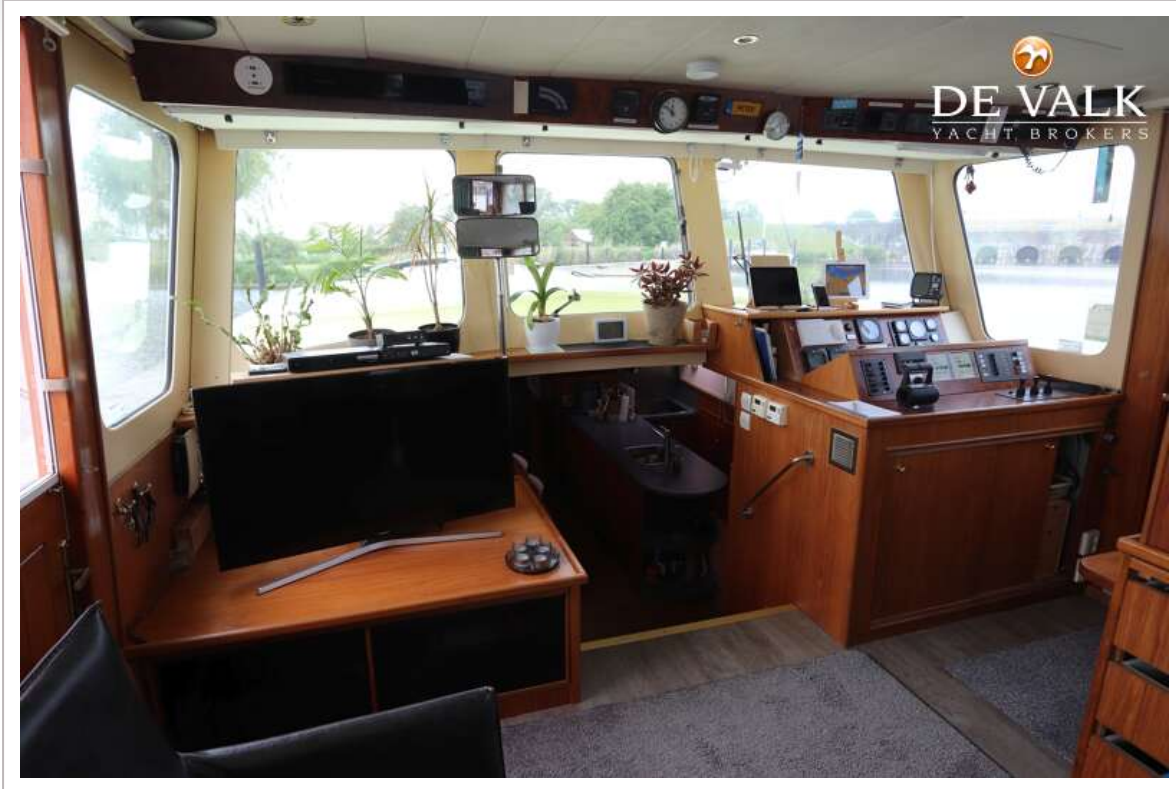
LUXE MOTOR 1800



LUXE MOTOR 1800



LUXE MOTOR 1800



LUXE MOTOR 1800



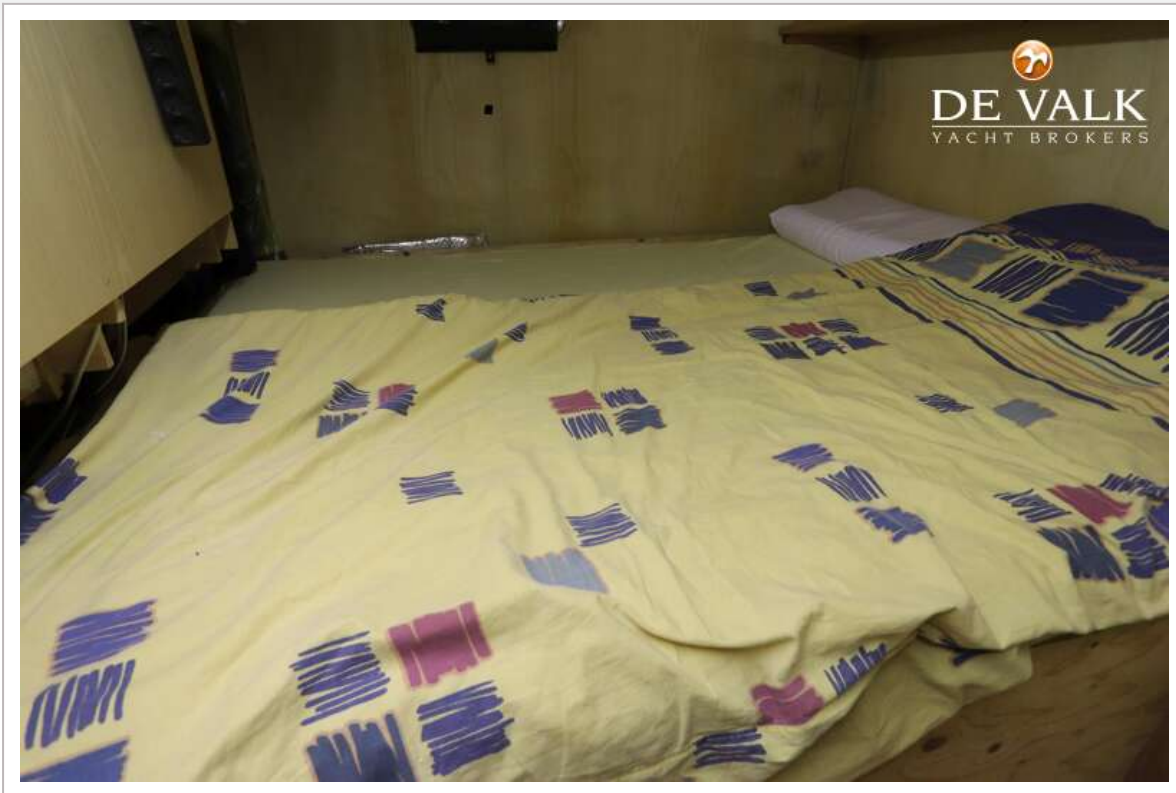
LUXE MOTOR 1800



LUXE MOTOR 1800



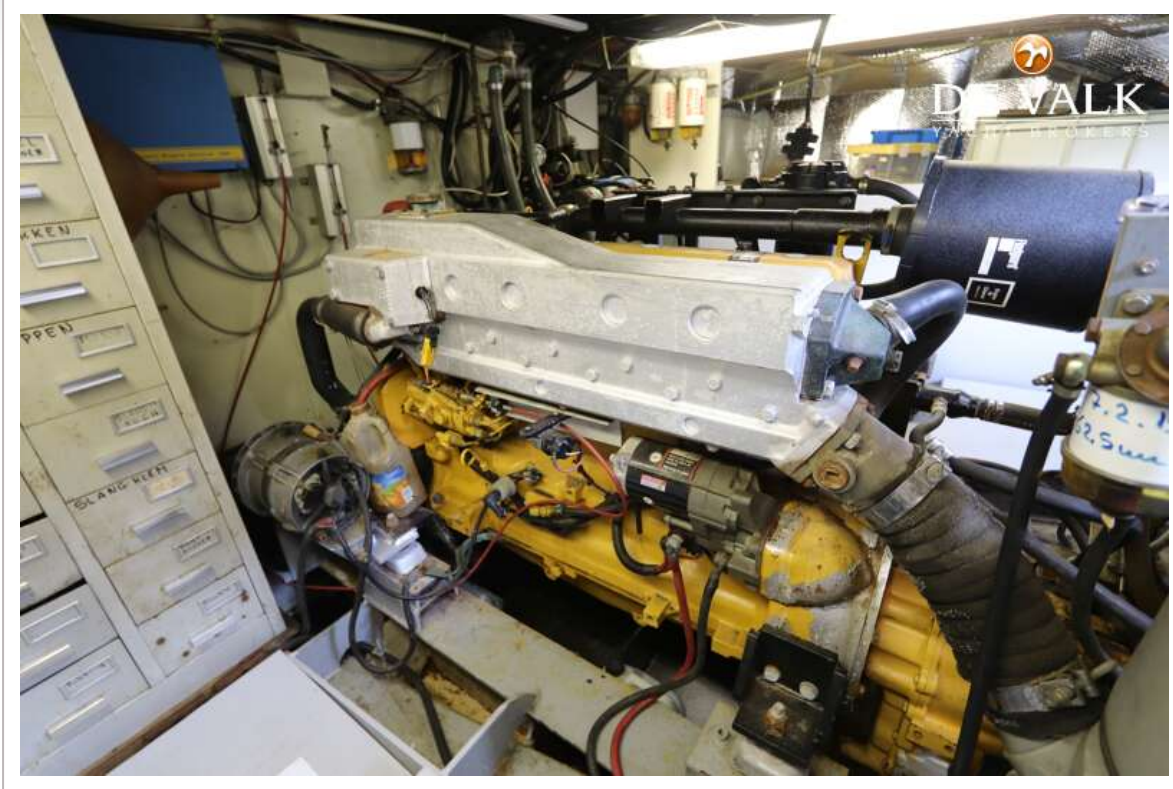
LUXE MOTOR 1800



LUXE MOTOR 1800



LUXE MOTOR 1800



LUXE MOTOR 1800

