



DE VALK  
YACHT BROKERS



BENETEAU 57



DE VALK  
YACHT BROKERS

BROKERAGE | CHARTER | BERTHS | FINANCE | INSURANCE | YACHT MANAGEMENT

## BROKER'S COMMENTS

This Beneteau 57 is a very well maintained sailing yacht. Whenever you buy a boat, you also buy her history and the sellers accuracy for keeping her in shape. With this yacht you cannot go wrong: A long record of overfulfilling service is collected for this yacht. She is more than ready to go from her berth in Greece. Everything is in up to new shape, so there is just happy sailing and holidaying left to do. Only second owner. Please ask for more information. Visitation very recommended.

*Jürgen Jacobs*

## SPECIFICATIONS

<b>Dimensions</b>	18.20 x 4.93 x 2.10 (m)	<b>Builder</b>	Chantiers Beneteau S.A.
<b>Built</b>	2004	<b>Cabins</b>	4
<b>Material</b>	GRP	<b>Berths</b>	7
<b>Engine(s)</b>	1 x Yanmar diesel	<b>Hp/Kw</b>	160.00 (hp), 117.76 (kw)
<b>Asking price</b>	sold (VAT )	<b>Lying</b>	Mediterranean

## CONTACT

<b>Sales office</b>	De Valk Hamburg	<b>Telephone</b>	+49 40 46 000 999
<b>Address</b>	Domstraße 11 20095 Hamburg DE	<b>E-mail</b>	hamburg@devalk.nl

## DISCLAIMER

These particulars are given in good faith as supplied but cannot be guaranteed.



## GENERAL

Model	BENETEAU 57
Type	sailing yacht
LOA (m)	18,20
Beam (m)	4,93
Draft (m)	2,10
Year built	2004
Builder	Chantiers Beneteau S.A.
Country	France
Displacement (t)	28,2
CE norm	A
Hull material	GRP
Hull colour	white
Keel type	wing keel Shallow wing keel
Superstructure material	GRP
Deck material	Teak, renewed 2016 in 10mm
Antifouling (year)	2021, renewed gelshield (2020)+ antifouling
Dorades	yes
Fuel tank (litre)	660 L, 2 x steel, 1 x plastic, with electric pump
Level indicator (fuel tank)	yes
Freshwater tank (litre)	1000l in 2 GRP tanks
Level indicator (freshwater)	yes
Blackwater tank (litre)	4 tanks at 70l
Level indicator (blackwater)	yes
Wheel steering	

## ACCOMMODATION

Cabins	4
Berths	7
Interior	mahogany
Floor	wood



Heating	
Air-conditioning	Reverse cycle aircon, 40000BTU, 5 fancoils
Navigation center	yes
Chart table	yes
Aft Cabin	2
Galley	yes
Sink	Double sink
Cooker	4 flamed gas-stove with oven
Oven	yes
Gas alarm	Alarm and gas remote switch
Microwave	yes
Fridge	Frigoboat fridge + small fridge in cockpit table
Freezer	Water chilled (app 150l)
Hot water system	App 50l boiler
Water pressure system	
Dishwasher	yes
Ice maker	yes
Owners cabin	
Wardrobe	hanging/drawers/shelves
Bathroom	en suite
Toilet	Jabsco electric, large seat
Toilet system	electric
Shower	
Guest cabin 1	double bed
Wardrobe	hanging/drawers/shelves
Bathroom	en suite
Toilet	
Toilet system	electric
Wash basin	
Shower	
Guest cabin 2	double bed
Wardrobe	drawers



<b>Bathroom</b>	
<b>Toilet</b>	
<b>Toilet system</b>	electric
<b>Guest cabin 3</b>	single bed
<b>Wardrobe</b>	hanging/drawers/shelves
<b>Toilet</b>	separate
<b>Toilet system</b>	electric
<b>Wash basin</b>	
<b>Washing machine</b>	AEG, new 2020
<b>Extra info</b>	LED lights in Salon
<b>Extra info</b>	Comfort mattresses with slatted frames in each cabin

## MACHINERY

<b>No of engines</b>	1
<b>Make</b>	Yanmar
<b>HP</b>	160
<b>kW</b>	117,76
<b>Fuel</b>	diesel
<b>Year installed</b>	2004
<b>Engine hours</b>	4056
<b>Engine cooling system</b>	freshwater heat exchanger
<b>Drive</b>	shaft
<b>Shaft seal</b>	Renewed 2021
<b>Bowthruster</b>	Maxpower
<b>Propeller type</b>	reversible 3 blade Maxprop
<b>Propeller shaft material</b>	stainless steel
<b>Shaft lubrication</b>	water
<b>Electric bilge pump</b>	yes
<b>Electrical installation</b>	yes
<b>Generator</b>	Onan 12kW
<b>Running hours generator</b>	1470h



<b>Batteries</b>	6 x 100Ah AGM 24V 2 x 160AH AGM 12V 1 x 12V Starterbattery
<b>Start battery</b>	yes
<b>Generator battery</b>	yes
<b>Bowthruster battery</b>	yes
<b>Battery charger</b>	Mastervolt
<b>Inverter</b>	Victron charger/inverter 100A
<b>Shorepower</b>	with cable
<b>Watermaker</b>	Dessalator, 60 l/h, 565h, new cartridges 2017

## NAVIGATION

<b>Compass</b>	Plastimo
<b>Depth sounder</b>	yes
<b>Log</b>	yes
<b>Windset</b>	yes
<b>Repeater</b>	3 x Raymarine ST2 90 Bidata
<b>VHF</b>	yes
<b>Autopilot</b>	Raymarine Smartpilot
<b>Rudder angle indicator</b>	Raymarine
<b>Radar</b>	Raymarine
<b>Radar/GPS/plotter</b>	2 x Raymarine E120, at navigation and in cockpit
<b>Electronic chart(s)</b>	yes
<b>AIS transceiver</b>	yes
<b>EPIRB</b>	McMurdo Smartfind +
<b>Navigation lights</b>	yes
<b>Searchlight</b>	Manual

## EQUIPMENT

<b>Fixed windscreen</b>	yes
<b>Sprayhood with grab rail</b>	New 2019, new glass 2021
<b>Bimini</b>	yes
<b>Sun awning</b>	yes



Cockpit cushions	+ fore deck cushions
Cockpit table	yes
Bathing platform	yes
Gangway	yes
Deck shower	yes
Anchor	Plough anchor
Anchor chain	120m
Chain counter	Integrated in remote control at helm station, new in 2020
Windlass	Lofrans with 2 remote controls
Deck wash	yes
Dinghy	Conrad Pischl R.I.B. Line 3.3
Outboard	Yamaha F25GE, 25hp, 4 stroke, new
Davits	Besenzoni hydraulic davits
Davits controls	Hydraulic
Sea railing	
Pushpit	yes
Pulpit	yes
Life raft (pers)	8 Persons
Last life raft survey	Due 2020
Lifebuoy	yes
Horn	
Fenders	yes
Mooring lines	yes
Spare parts	Rich spare parts sortiment for all equipment
TV	Sony with HDMI and Apple interface
Radio-cd player	In fore cabin
iPod connection	yes
Surround Sound System	Fusion MS AV600 Sound System
Sub-woofer	yes
Cockpit speakers	yes
Speakers in salon	yes
Clock - barometer	yes



Fire extinguisher

yes

## RIGGING

Rigging

sloop

Standing rigging

wire Forestay and aftstay new in 2020, extra heavy shrouds

Material mast

White lacquered

Spreaders

With LED lights

Keel stepped mast

yes

Mainsail

Hydranet, triradial cut, in mast furled, 2018

Cutterstay

Detachable cutterstay for jib

Genoa

Furling genoa, Hydranet, triradial cut, UV protection, 2018

Genoa furler

Bamar electric furler, revisited in 2020

Spinnaker

Parasailor 210m²

Removable innerforestay

yes

Reefing System

main in-mast furling

Backstay adjuster

Boomvang

gasspring

Primary sheet winch

Lewmar 54

Genoa sheetwinches

Lewmar 66

Halyard winches

Lewmar 48

Winchcovers

yes

Spi-pole

White laquered

Extra info

Dyneema Runners / Backstays





# BENETEAU 57







# BENETEAU 57



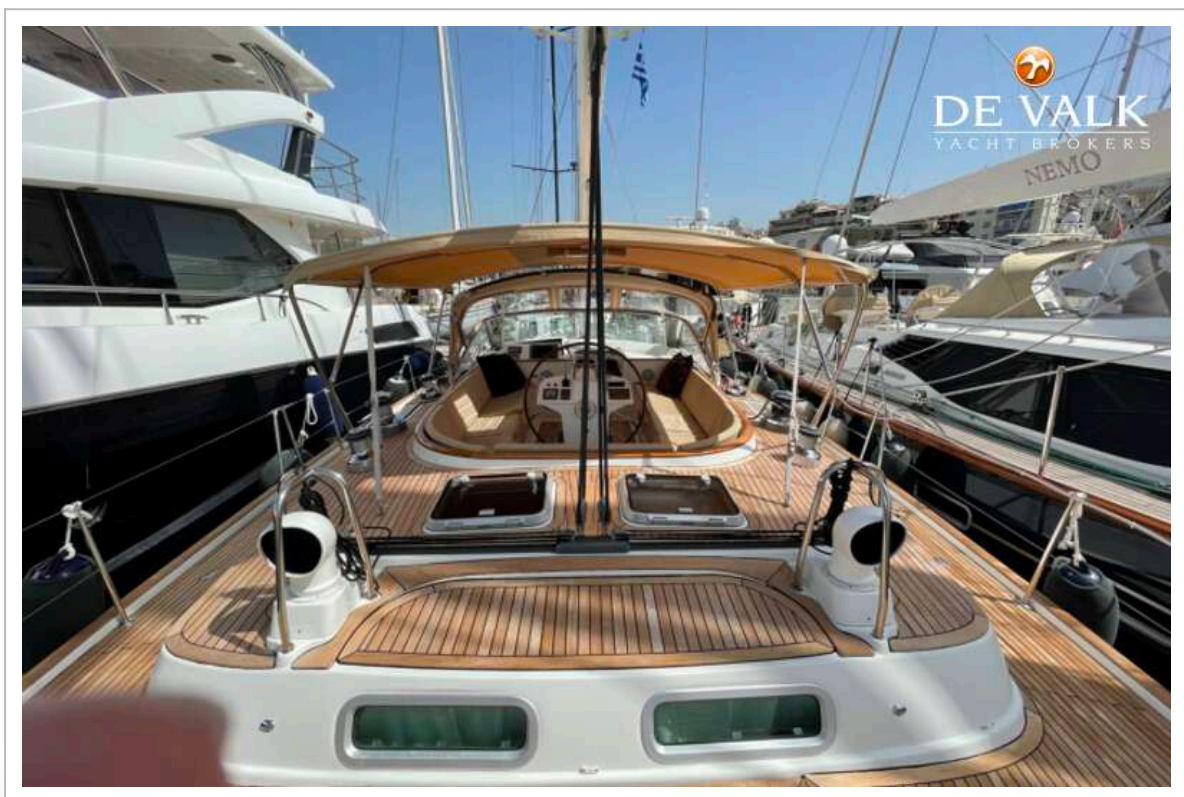


# BENETEAU 57





# BENETEAU 57



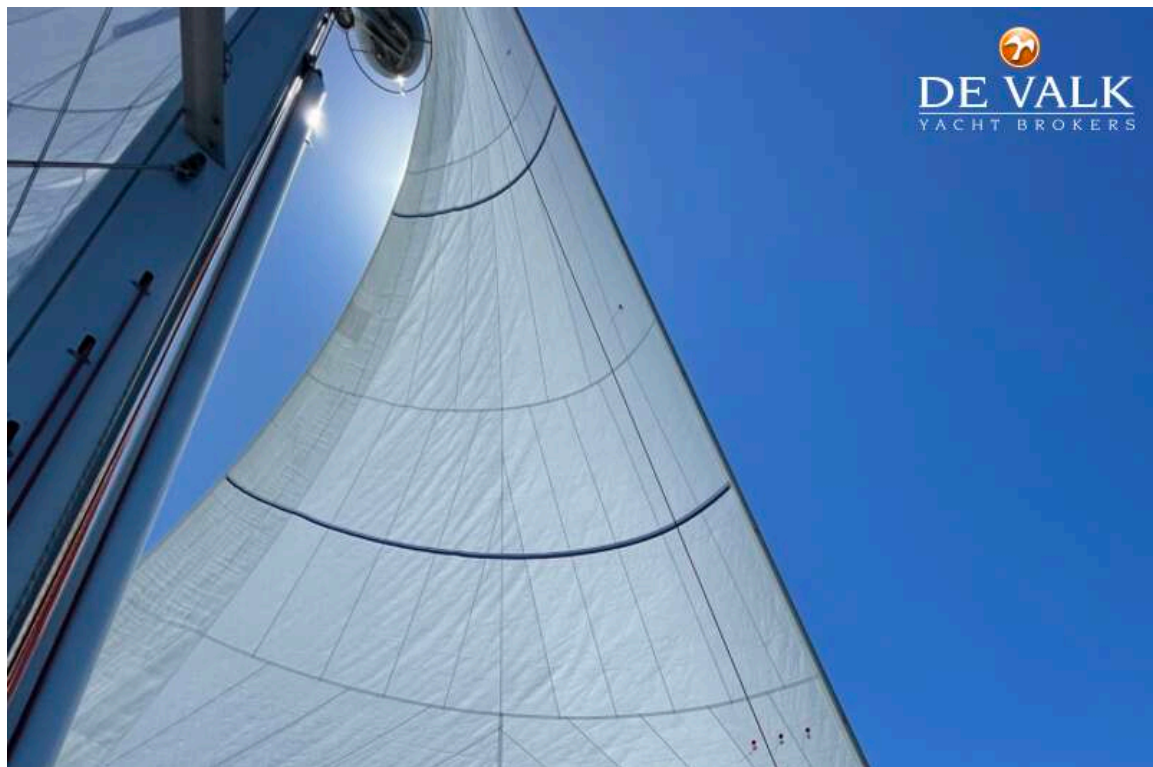




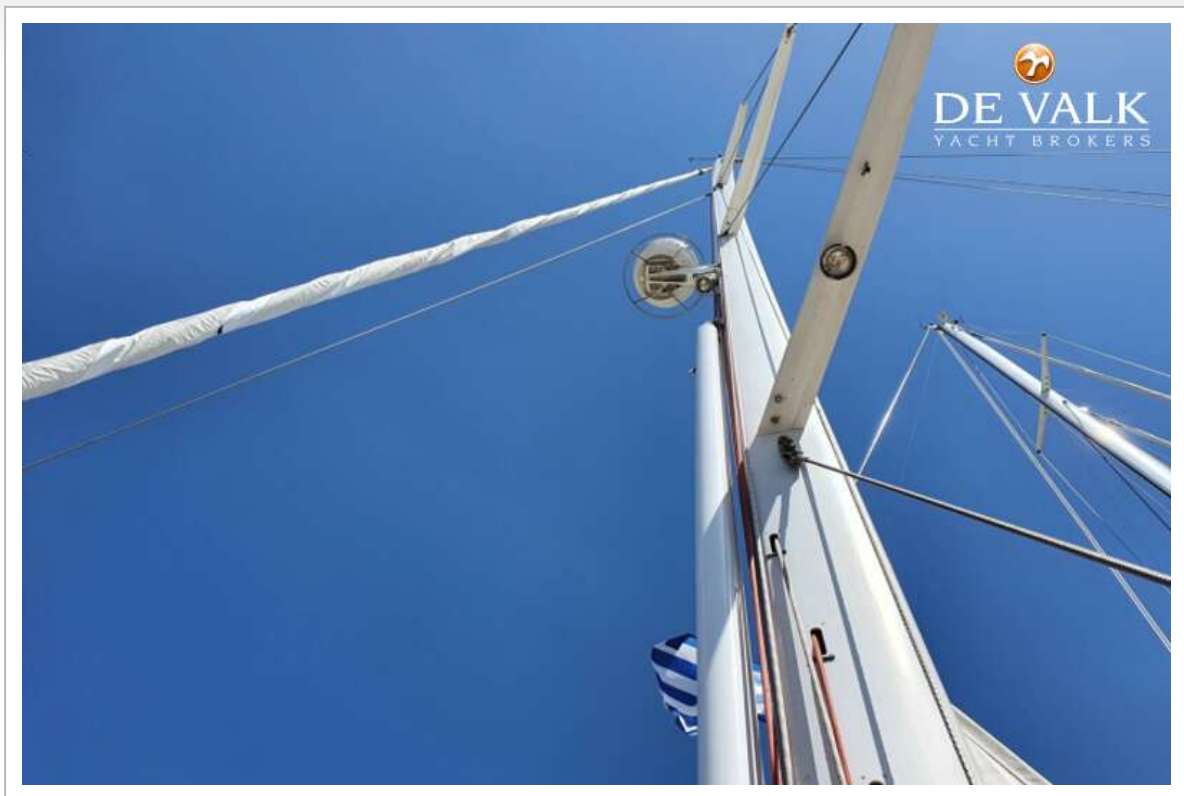




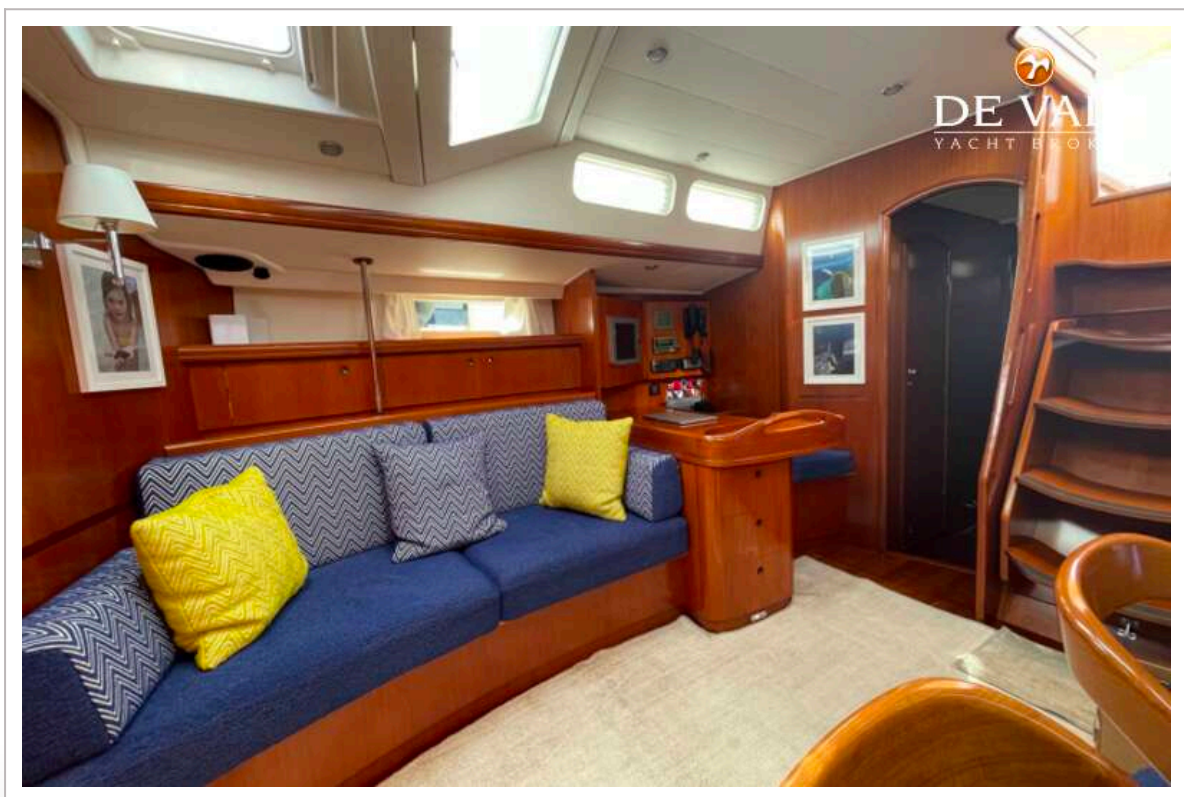
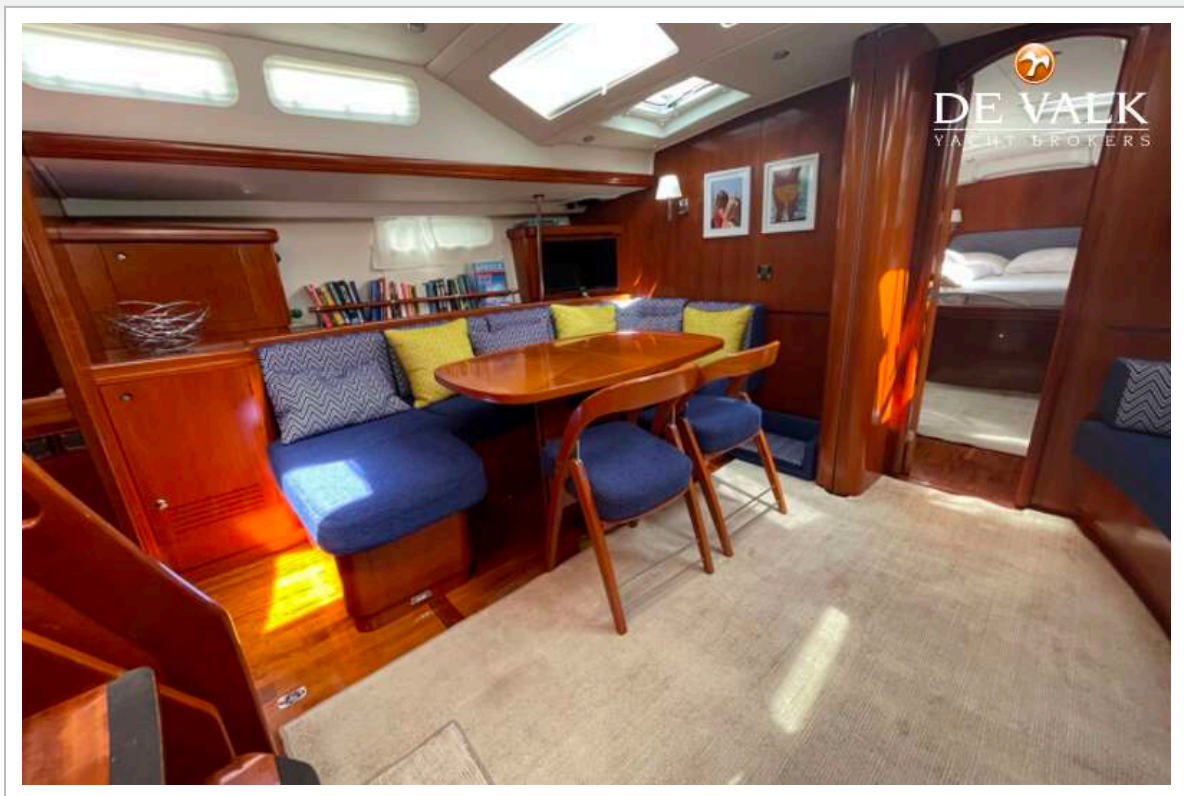






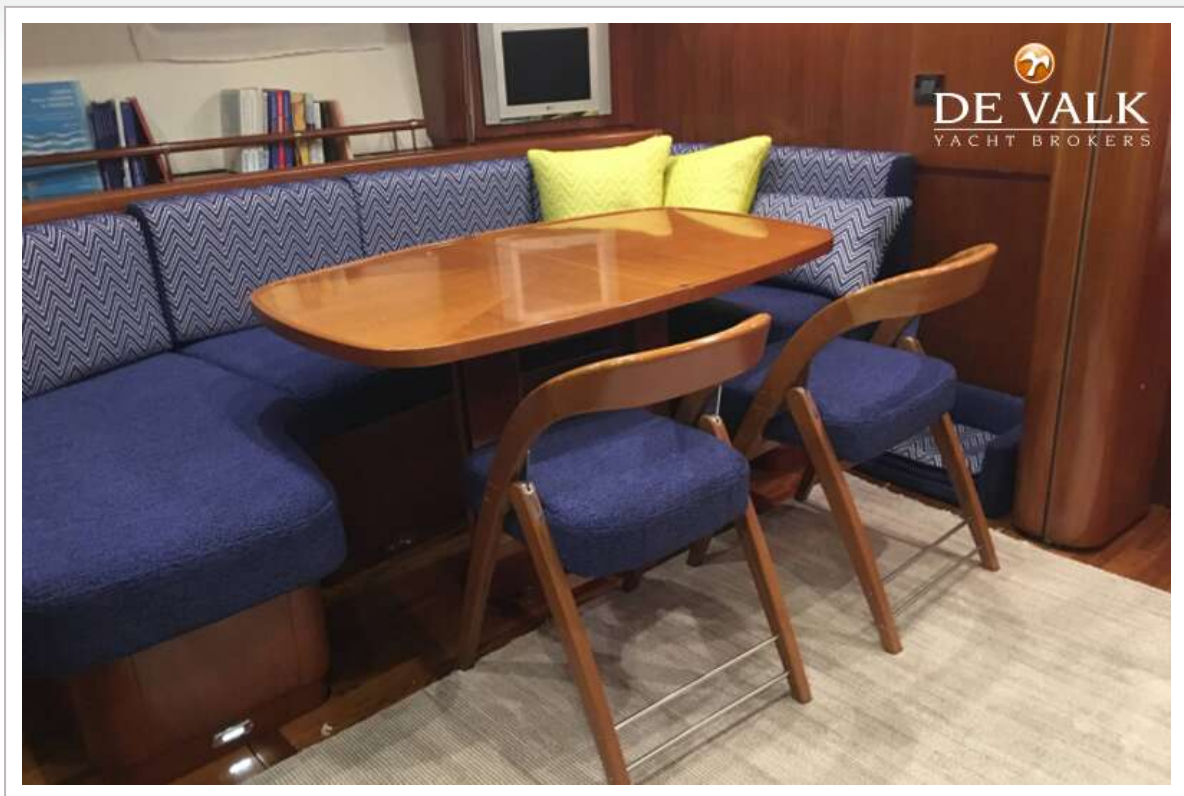


# BENETEAU 57

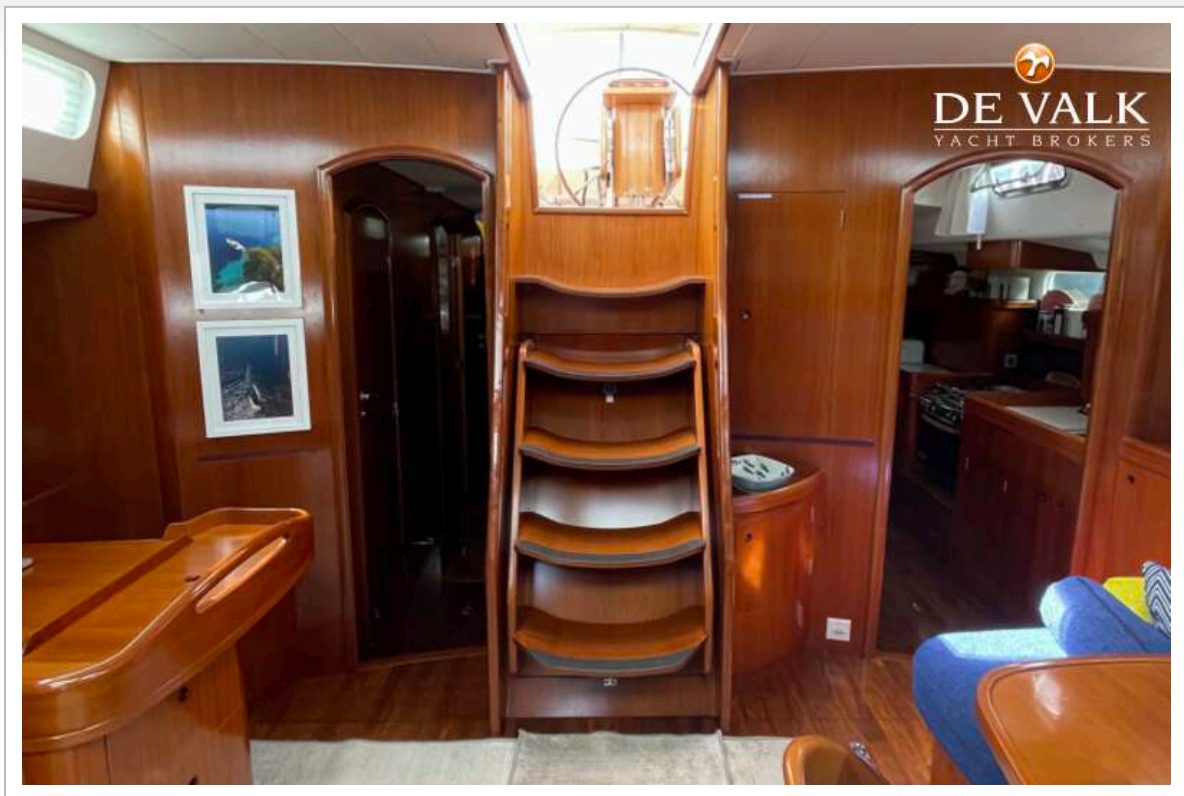




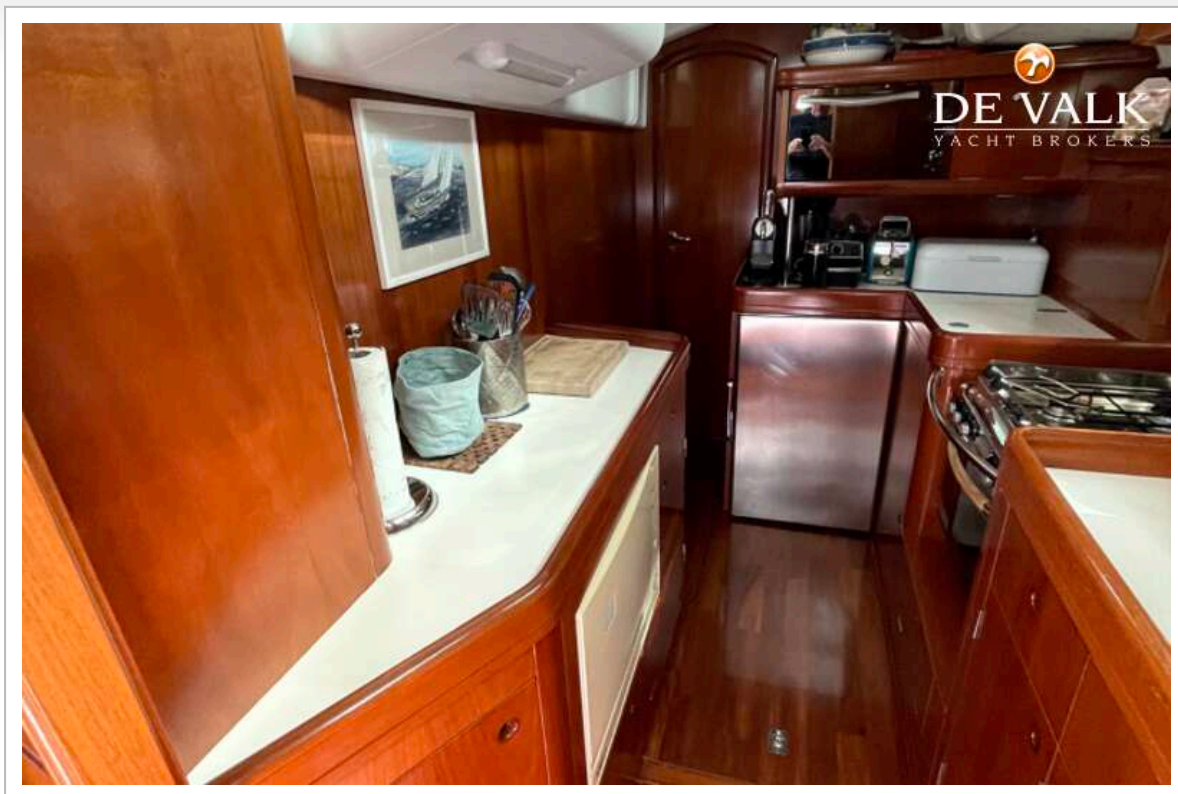
# BENETEAU 57



# BENETEAU 57







# BENETEAU 57

