



DE VALK
YACHT BROKERS



MULDER SUPER FAVORITE 1350 DELUXE



DE VALK
YACHT BROKERS

MULDER SUPER FAVORITE 1350 DELUXE

BROKER'S COMMENTS

"This beautifully maintained Mulder Super Favorite 1350 Deluxe must be seen! This neat classic is a great motor yacht for cruising rivers or inland waterways. Because of her spacious interior, this Mulder Super Favorite 13.50 Deluxe named "Lulu" is extremely suitable for longer stays on board. Because of her air draft, it is also possible to cruise the French canals. In 2020-2021 "Lulu" received a refit to the entire wooden superstructure and in 2016 the steel hull was last painted. In short, this beautiful classic Mulder is ready for the season!"

Jochem Heijermans

SPECIFICATIONS

| | | | |
|---------------------|-------------------------------|----------------|-------------------------|
| Dimensions | 13,50 x 4,00 x 1,20 (m) | Builder | Mulder Shipyard |
| Built | 1987 | Cabins | 2 |
| Material | Steel | Berths | 4 |
| Engine(s) | 2 x Volvo Penta TMD31A diesel | Hp/Kw | 2 x 80 (hp), 58,88 (kw) |
| Asking price | EUR 119.500 (vat: paid) | Lying | not at sales office |

CONTACT

| | | | |
|---------------------|-------------------------------------|------------------|-------------------|
| Sales office | De Valk Belgium | Telephone | +3258680218 |
| Address | -- 1401 PT Nieuwpoort Belgium | Fax | +31 355829019 |
| | | E-mail | belgium@devalk.nl |

DISCLAIMER

These particulars are given in good faith as supplied but cannot be guaranteed and cannot be used for contracts.



MULDER SUPER FAVORITE 1350 DELUXE

GENERAL

| | |
|------------------------------------|-----------------------------------|
| Model | MULDER SUPER FAVORITE 1350 DELUXE |
| Type | motor yacht |
| LOA (m) | 13,50 |
| Beam (m) | 4,00 |
| Draft (m) | 1,20 |
| Air draft (m) | 3,30 |
| Headroom (m) | 2,00 |
| Year built | 1987 |
| Builder | Mulder Shipyard |
| Country | The Netherlands |
| Designer | Guido de Groot Design |
| Displacement (t) | 14 |
| Hull material | steel |
| Hull colour | off-white |
| Hull shape | hard chine |
| Superstructure material | wood (2021) |
| Rubbing strake | steel |
| Deck material | steel |
| Deck finish | teak |
| Superstructure deck finish | paint |
| Cockpit deck finish | teak |
| Antifouling (year) | 2021 |
| Window frame | aluminium |
| Window material | tempered glass |
| Deckhatch | yes |
| Portholes | yes |
| Radar arch | collapsible |
| Mast can be lowered | manual |
| Fuel tank (litre) | steel 1000 |
| Level indicator (fuel tank) | yes |



MULDER SUPER FAVORITE 1 350 DELUXE

| | |
|-------------------------------------|---------------------|
| Freshwater tank (litre) | 1200 |
| Level indicator (freshwater) | yes |
| Wheel steering | hydraulic |
| Inside helm position | yes |
| Outside helm position | yes |
| More info on paintwork | hull painted (2016) |

ACCOMMODATION

| | |
|---------------------------------|---------------------------------------|
| Cabins | 2 |
| Berths | 4 |
| Interior | teak |
| Floor | carpet |
| Aft deck | yes |
| Saloon | yes |
| Headroom saloon (m) | 2 |
| Heating | diesel ducted hot air Eberspacher D8L |
| Heating 2 | electric 220V |
| Air-conditioning | reverse cycle airco Mar-IX |
| Aft Cabin | yes |
| Opening door to aft deck | yes |
| Galley | yes |
| Countertop | plastic |
| Sink | stainless steel |
| Cooker | calor gas 4 burner |
| Fridge | yes |
| Hot water system | geyser on Calor Gas |
| Water pressure system | electrical |
| Owners cabin | French bed |
| Bed length (m) | 2.00 x 1.40 |
| Wardrobe | hanging |



MULDER SUPER FAVORITE 1350 DELUXE

| | |
|-----------------------|-----------------|
| Bathroom | en suite |
| Toilet | en suite |
| Toilet system | electric |
| Wash basin | in the bathroom |
| Shower | en suite |
| Guest cabin 1 | v-bed |
| Bed length (m) | 2.00 |
| Wardrobe | hanging |
| Bathroom | en suite |
| Toilet | en suite |
| Toilet system | electric |
| Wash basin | in the bathroom |
| Shower | en suite |

MACHINERY

| | |
|------------------------------|---------------------------|
| No of engines | 2 |
| Make | Volvo Penta |
| Type | TMD31A |
| HP | 80 |
| kW | 58.88 |
| Fuel | diesel |
| Year installed | 1987 |
| Maximum speed (kn) | 10 |
| Cruising speed (kn) | 8 |
| Consumption (l/hr) | 8 |
| Engine cooling system | freshwater heat exchanger |
| Drive | shaft |
| Engine controls | bowden cable |
| Gearbox | hydraulic |
| Bowthruster | electric |
| Exhaust | watercooled |



MULDER SUPER FAVORITE 1350 DELUXE

| | |
|--------------------------------|---------------------|
| Propeller type | fixed |
| Shaft lubrication | grease |
| Electrical installation | 12V/24V/220V |
| Batteries | yes |
| Start battery | yes |
| Service battery | yes |
| Bowthruster battery | yes |
| Battery monitor | yes |
| Battery charger | Mastervolt 24V/50Ah |
| Inverter | Victron 24V/750W |
| Shorepower | with cable |

NAVIGATION

| | |
|--------------------------|-----------|
| Depth sounder | Raymarine |
| VHF | yes |
| VHF handheld | yes |
| Navigation lights | yes |

EQUIPMENT

| | |
|-----------------------------------|--------|
| Cockpit cover | yes |
| Bimini | yes |
| Bathing platform | yes |
| Boarding ladder | yes |
| Anchor | yes |
| Windlass | manual |
| Capstan | yes |
| Sea railing | wood |
| Grab rail (superstructure) | wood |
| Railing side opening gates | 2x |



MULDER SUPER FAVORITE 1350 DELUXE

| | |
|--------------------------|-----|
| Pushpit | yes |
| Pulpit | yes |
| Wiper | yes |
| Horn | yes |
| Fenders | yes |
| Mooring lines | yes |
| Radio | yes |
| Speakers in salon | yes |



MULDER SUPER FAVORITE 1350 DELUXE



MULDER SUPER FAVORITE 1350 DELUXE



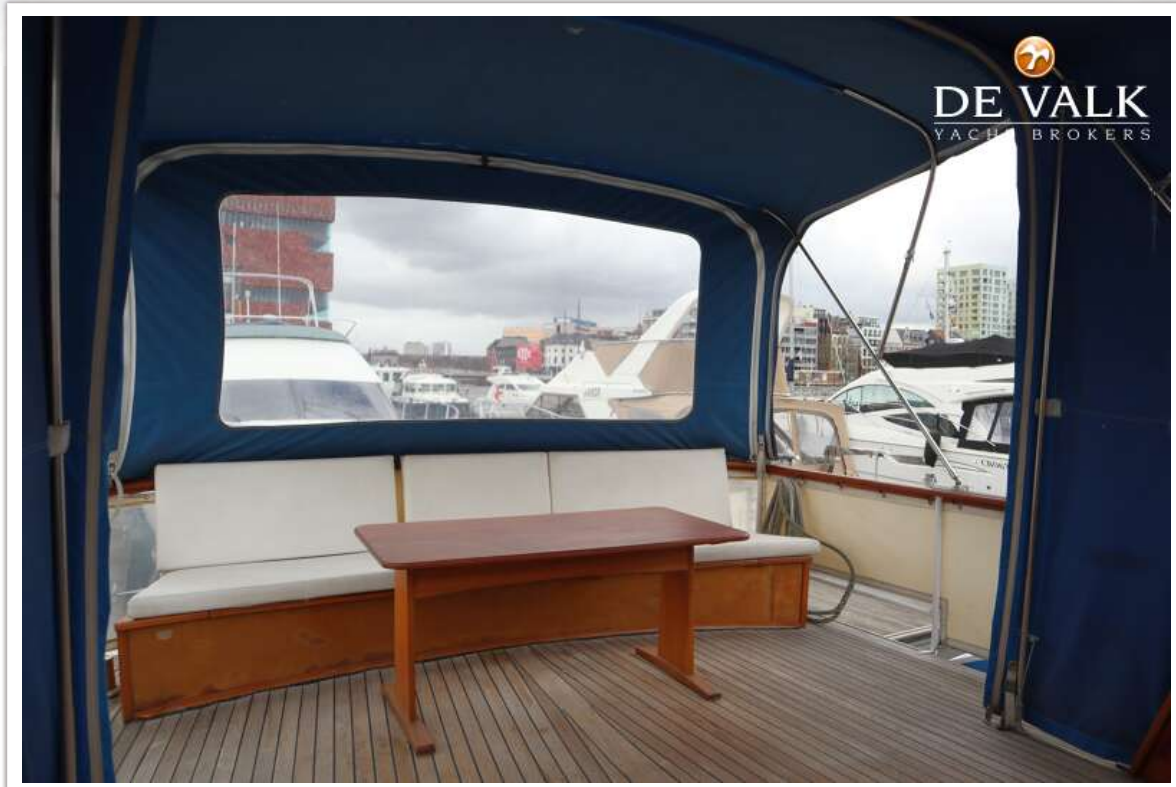
MULDER SUPER FAVORITE 1350 DELUXE



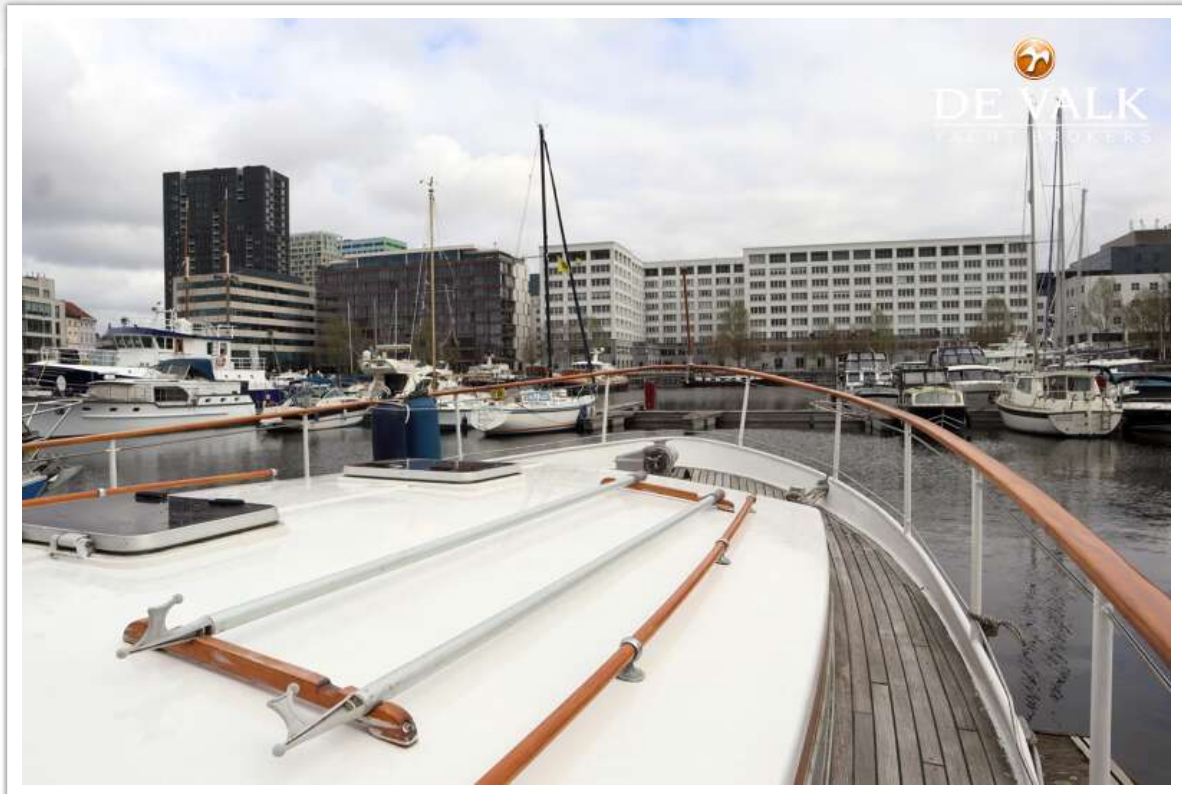
MULDER SUPER FAVORITE 1350 DELUXE



MULDER SUPER FAVORITE 1350 DELUXE



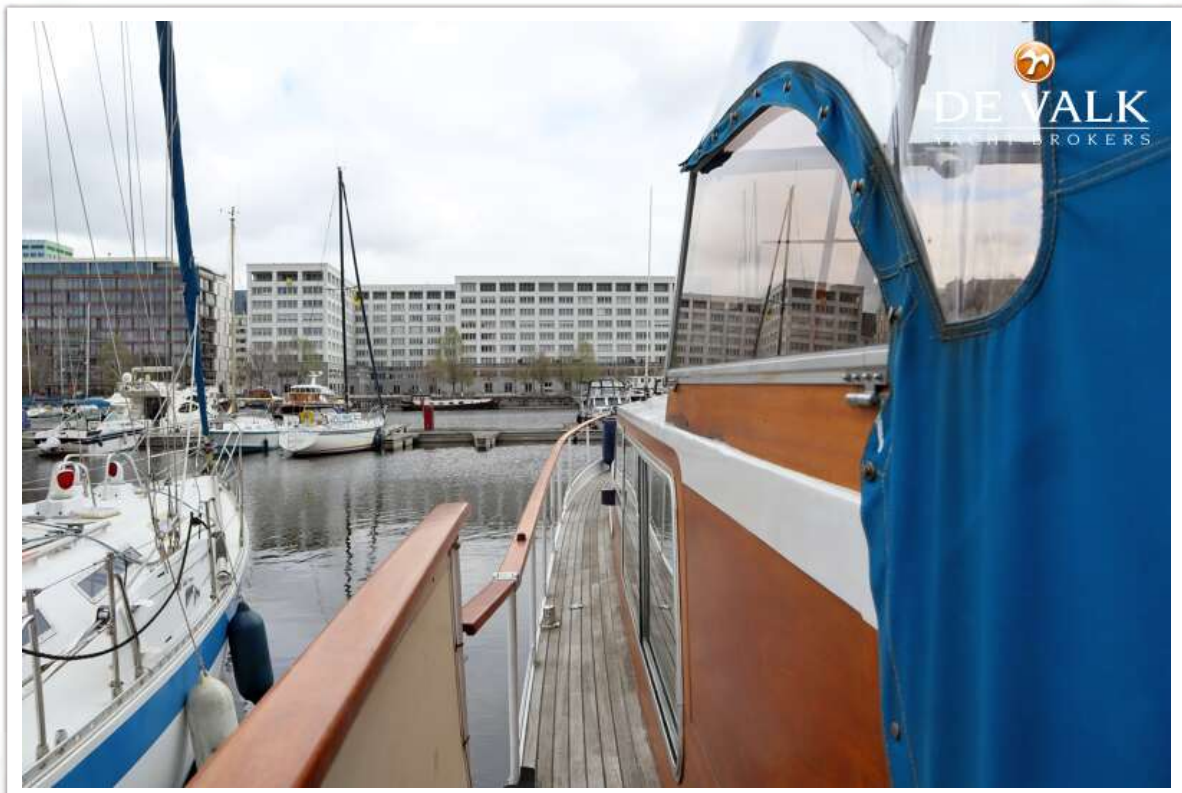
MULDER SUPER FAVORITE 1350 DELUXE



MULDER SUPER FAVORITE 1350 DELUXE



MULDER SUPER FAVORITE 1350 DELUXE



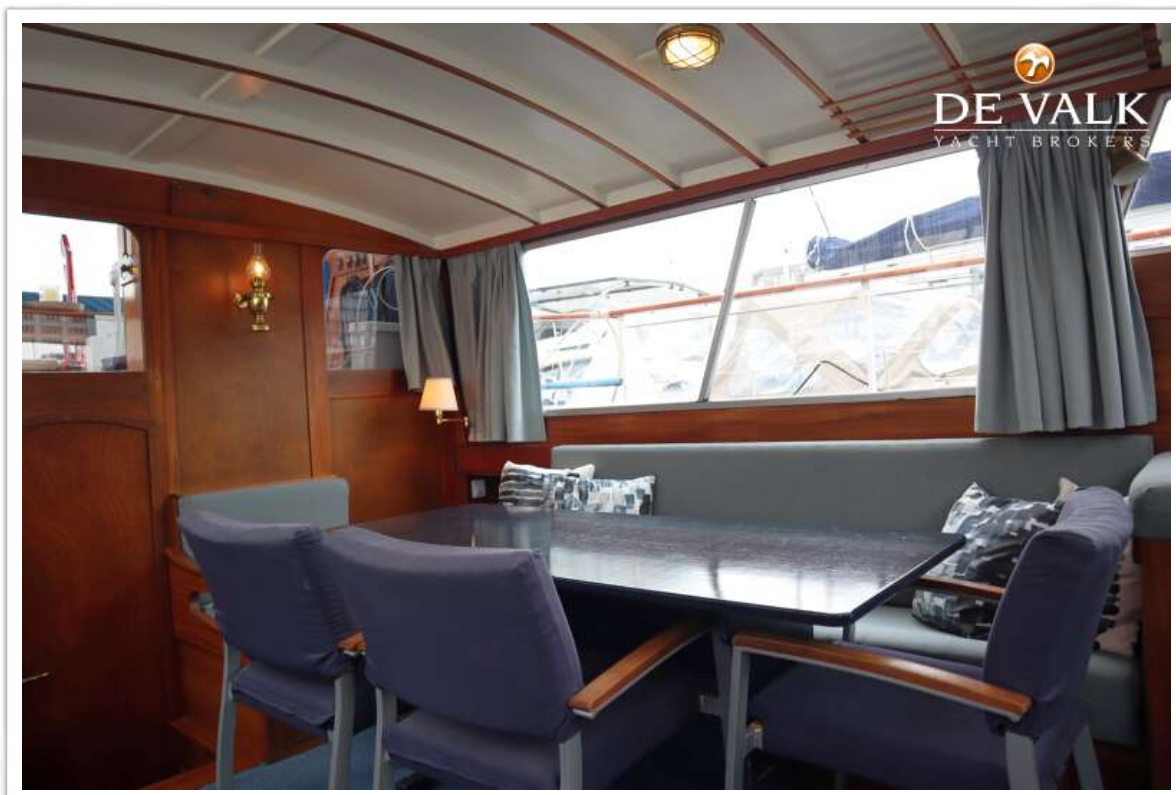
MULDER SUPER FAVORITE 1350 DELUXE



MULDER SUPER FAVORITE 1350 DELUXE



MULDER SUPER FAVORITE 1350 DELUXE



MULDER SUPER FAVORITE 1350 DELUXE



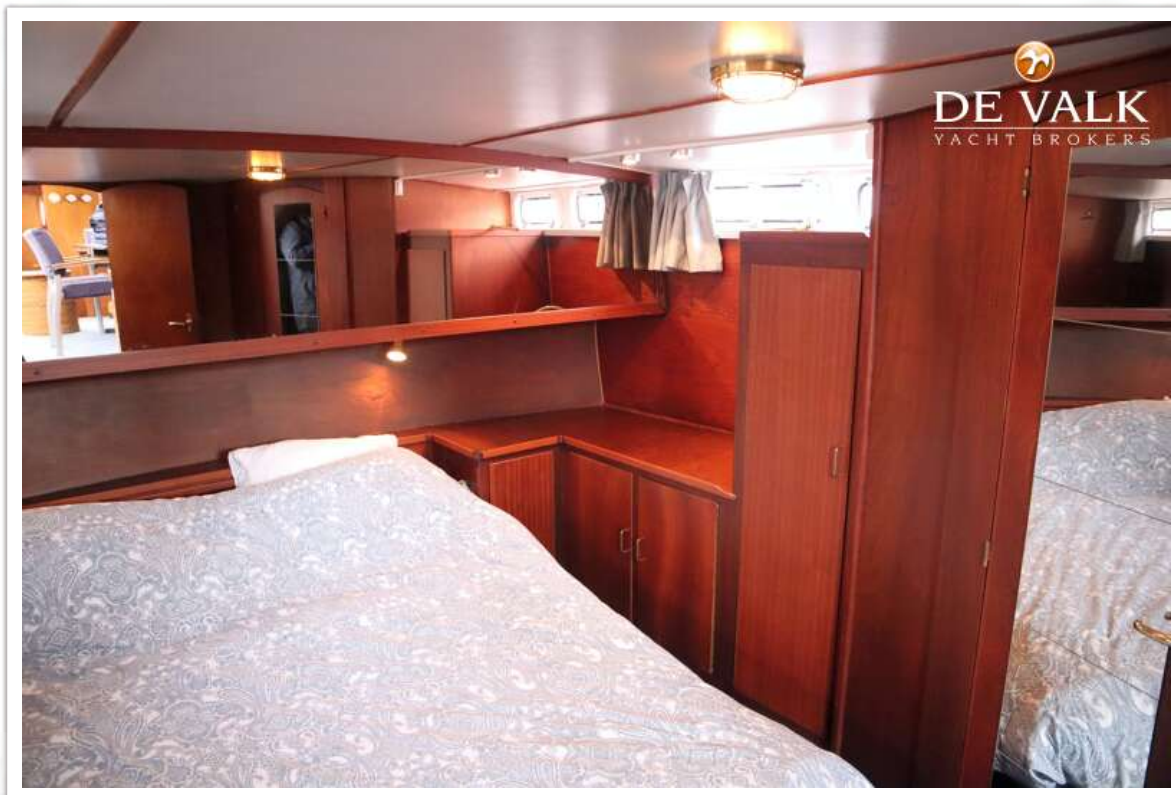
MULDER SUPER FAVORITE 1350 DELUXE



MULDER SUPER FAVORITE 1350 DELUXE



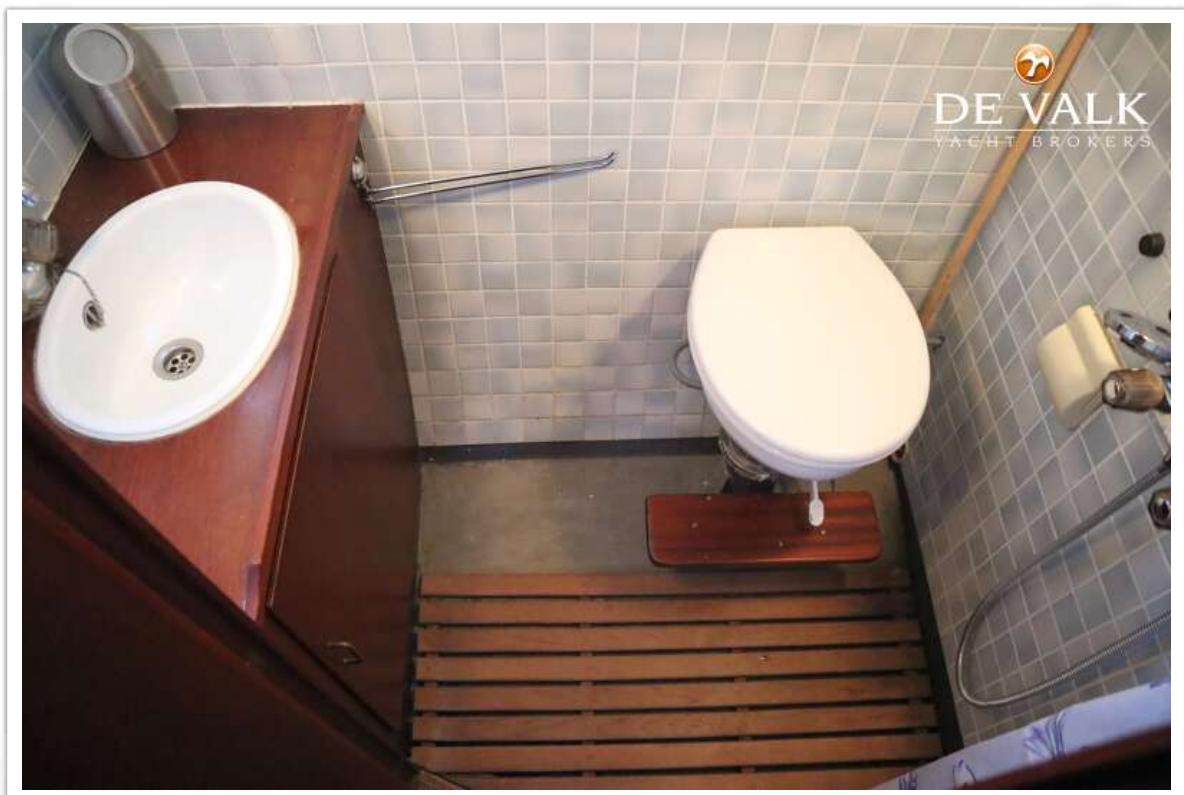
MULDER SUPER FAVORITE 1350 DELUXE



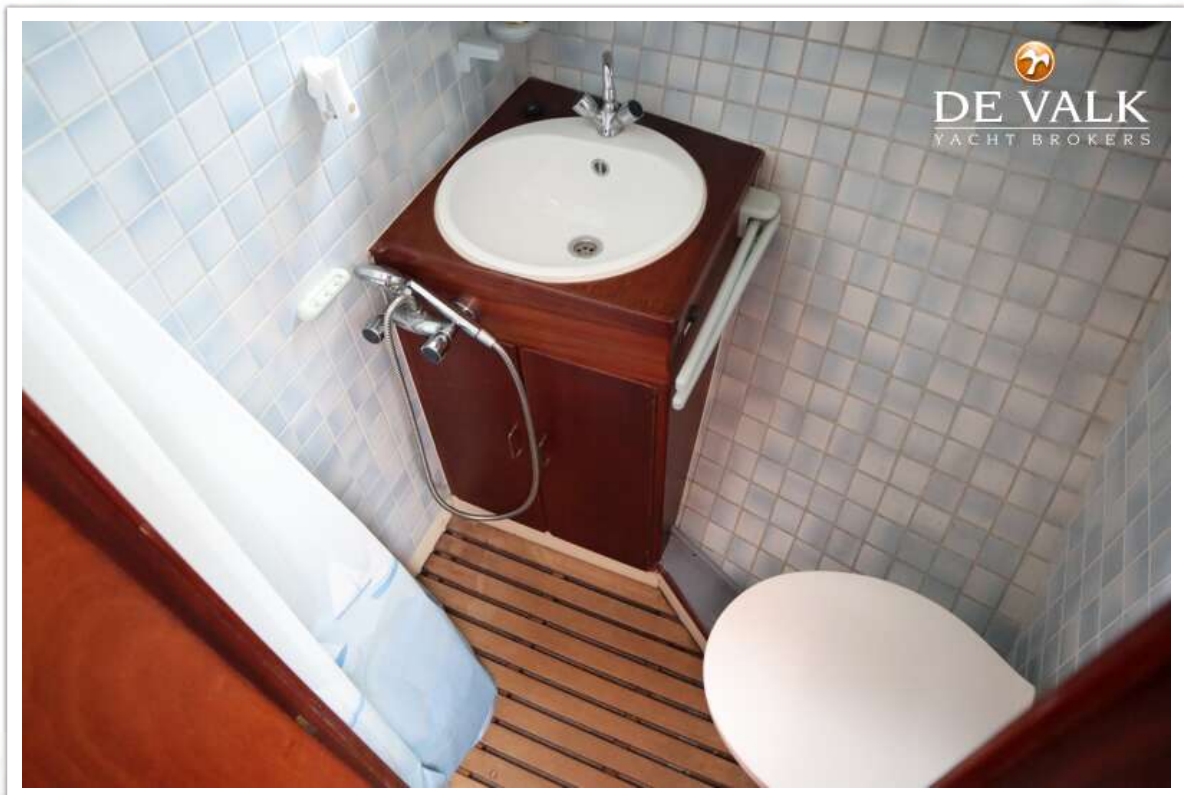
MULDER SUPER FAVORITE 1350 DELUXE



MULDER SUPER FAVORITE 1350 DELUXE



MULDER SUPER FAVORITE 1350 DELUXE



MULDER SUPER FAVORITE 1350 DELUXE



MULDER SUPER FAVORITE 1350 DELUXE

