



DE VALK
YACHT BROKERS



ENDURANCE 44



DE VALK
YACHT BROKERS

ENDURANCE 44

BROKER'S COMMENTS

This solid and very well build steel hull Endurance 44, designed by Peter Ibold, has a beautiful and comfortable cockpit and a spacious forward deck. You will find the accommodation area open and light and well equipped. The yacht has been well maintained by her experienced owner, lately the electrical system has been renewed onboard and the hull sandblasted and epoxy treated in 2018. Everything is operative for a safe passage.

Tue Simon Fasting

SPECIFICATIONS

Dimensions	13.40 x 4.00 x 2.10 (m)	Builder	Chantier de la Grande Bruyere
Built	1978	Cabins	2
Material	Steel	Berths	6
Engine(s)	x Perkins 4236 diesel	Hp/Kw	82.00 (hp), 60.27 (kw)
Asking price	sold (VAT)	Lying	contact sales office

CONTACT

Sales office	De Valk Barcelona	Telephone	+34 932 202 825
Address	Barcelona region 08392 Barcelona ES	E-mail	barcelona@devalk.nl

DISCLAIMER

These particulars are given in good faith as supplied but cannot be guaranteed.



ENDURANCE 44

GENERAL

Model	ENDURANCE 44
Type	sailing yacht
LOA (m)	13,40
Beam (m)	4,00
Draft (m)	2,10
Year built	1978
Builder	Chantier de la Grande Bruyere
Country	France
Designer	Peter Ibold
Displacement (t)	13
Hull material	steel
Antifouling (year)	2021
Fuel tank (litre)	stainless steel 2X 500L - cleaned in 2021
Freshwater tank (litre)	800 L Cleaned in 2021
Blackwater tank (litre)	60 L
Greywater tank (litre)	170 L
More info on hull	Sandblasted and epoxy system treatment with Hempel in 2018
Extra info	All water pipes changed in 2021
Extra info	New fittings in galley and heads in 2021
Extra info	Total hull refit with new steel skin and foam insulation in 2012

ACCOMMODATION

Cabins	2
Berths	6
Floor	yes
Heating	Planar 4 KWdiesel
Navigation center	Yes
Galley	Replacement dishes, pans with high quality products in 2021
Cooker	calor gas Eno One
Fridge	Waeco 110 L (2012)



Hot water system	220V/engine/heating Quick
Water pressure system	electrical
Owners cabin	double bed
Wardrobe	yes
Bathroom	shared
Toilet	shared Electric
Guest cabin 1	French bed
Wardrobe	hanging and drawers
Bathroom	shared
Extra info	An additional single berth in the salon
Washing machine	Beko 3 kg
Extra info	All behind wooden structures new 2012

MACHINERY

Make	Perkins
Type	4236
HP	82
kW	60,27
Fuel	diesel
Bowthruster	electric 6 KW
Propeller type	feathering
Propeller blades	3
Start battery	1 X 110 amp (2016)
Service battery	4 X 85amp (2021)
Bowthruster battery	2 X 110 amp (also for the anchor winch)
Battery charger	Victron Energy
Wind generator	"Silent wind" 400W (12V)
Solar panel	150W
Shorepower	with cable 220V

NAVIGATION



Compass	Yes
Windset	Raymarine ST60
VHF	Raymarine 49E grau Clipper Navtex
VHF handheld	Icom DSC IC-M93D
Autopilot	Raymarine smart Pilot ST6002 Raypilot TYP2 12V Linear drive
Radar	Raymarine RD418 Digital
Plotter	Aixom 9
Plotter/GPS	Raymarine C90W
Radar/GPS/plotter	Raymarine ST60 tridata
AIS receiver	Raymarine AIS 700
Navigation lights	LED

EQUIPMENT

Anchor	Delta 30 kg
Anchor chain	100 x 10mm galvanized
Dinghy	inflatable
Outboard	Yamaha 2 HP
Radio-cd player	Sony
Fire extinguisher	2 x 2 L + 1 x 4 L

RIGGING

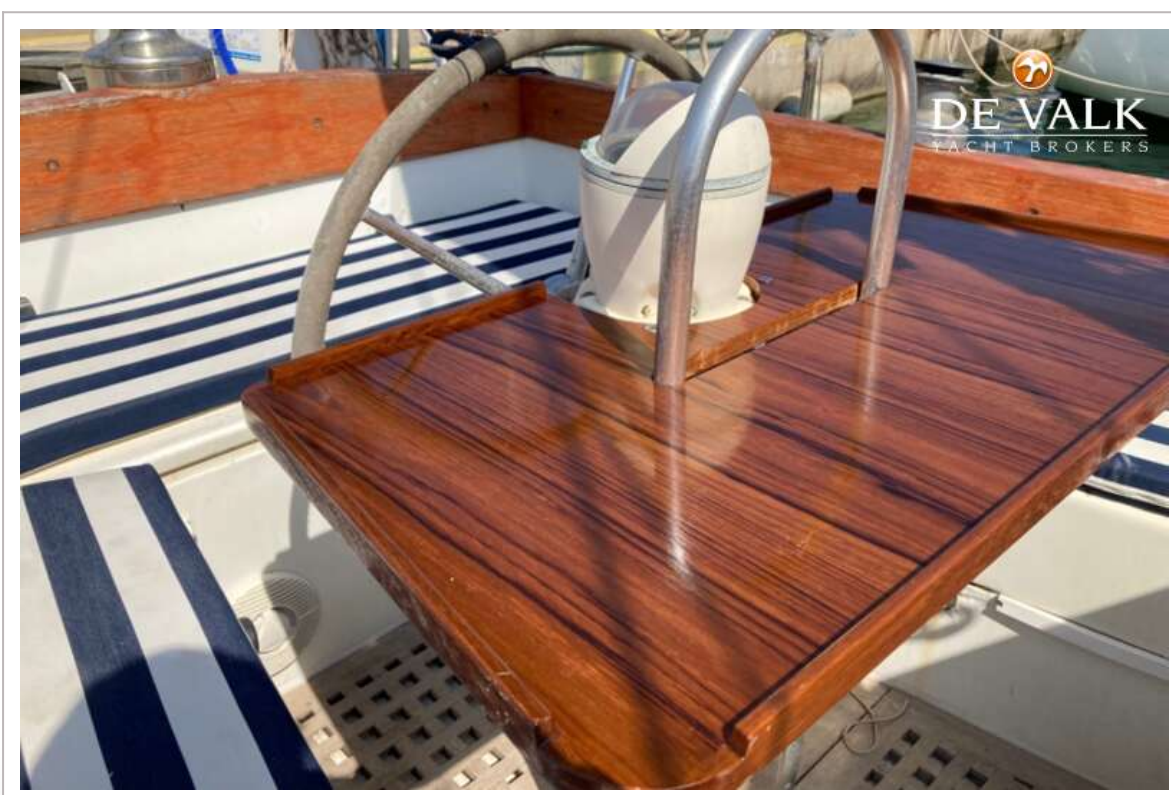
Rigging	ketch
Standing rigging	wire
Mainsail	37.5 M2 (2013)
Mizzen	13.5 M2 (2013)
Jib	Storm jib 13.8 M2 (2013)
Genoa	Roller furling 60.5 M2 (2013)
Multifunctional winches	Lewmar 4 x 30 + 1 x 60 + 1 x 30
Extra info	Barlow Australia 1 x 23 Barient USA 1 x 10



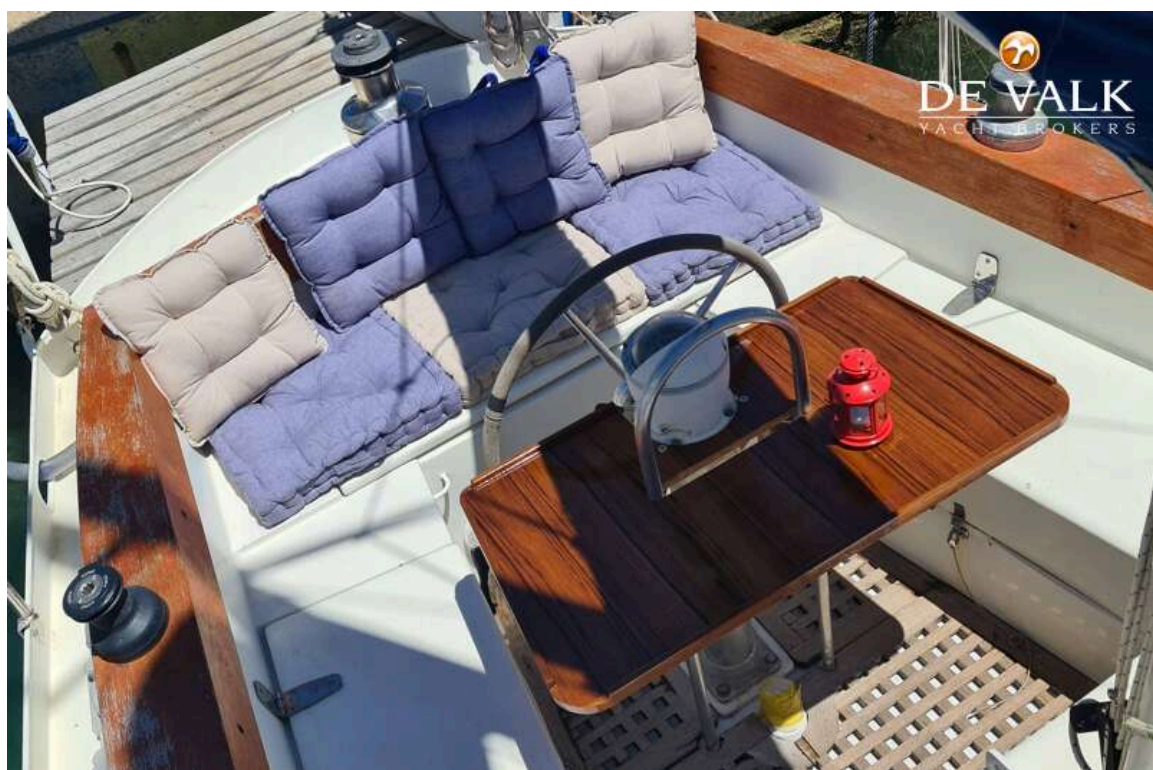
ENDURANCE 44



ENDURANCE 44



ENDURANCE 44



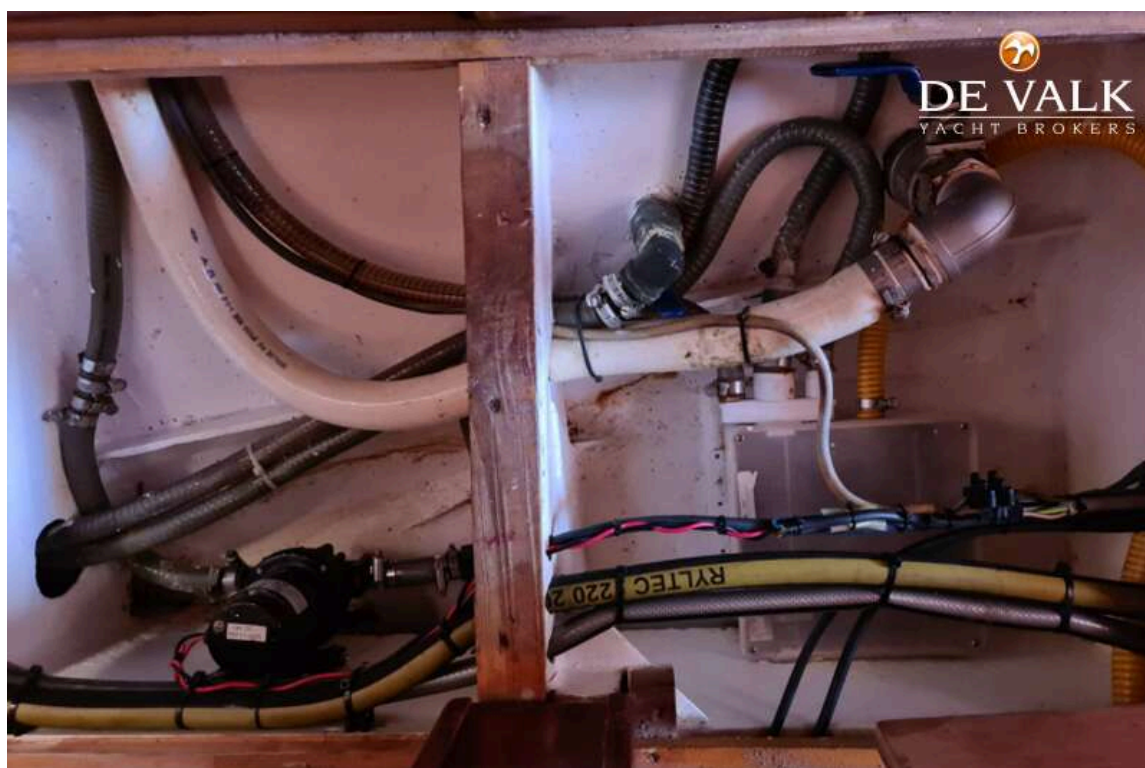
ENDURANCE 44

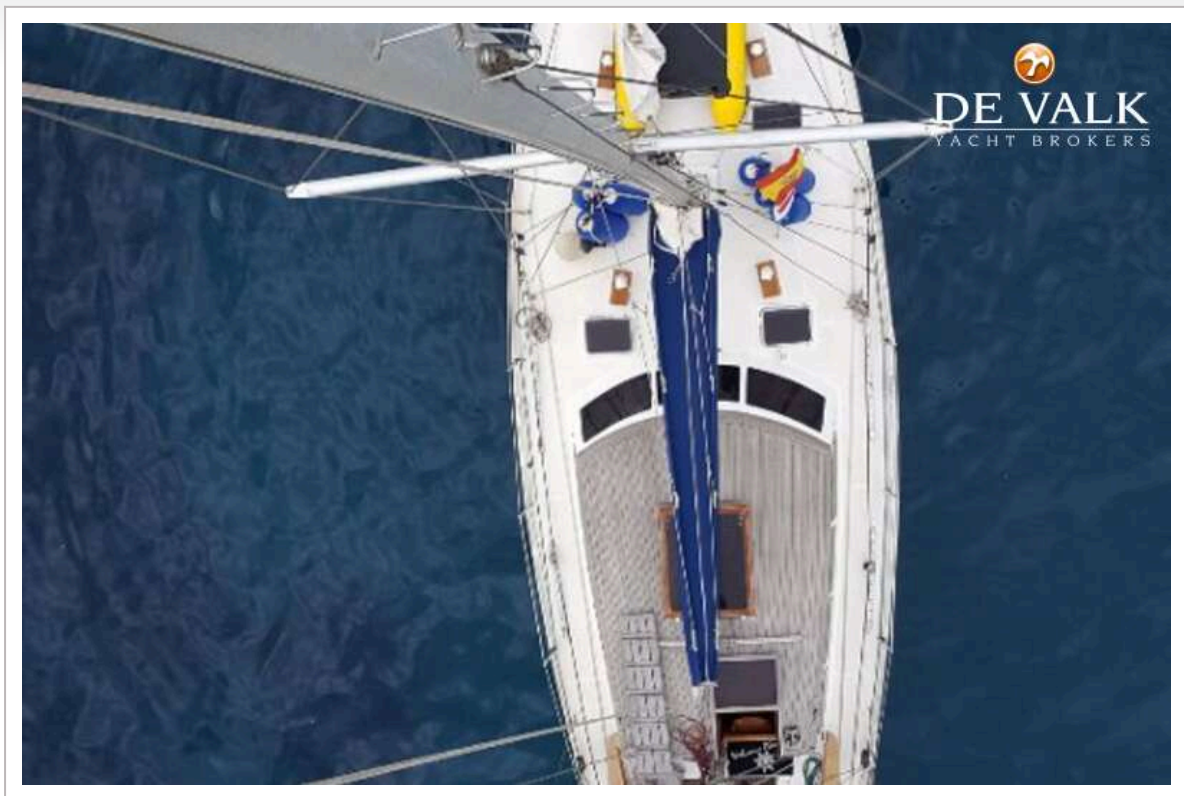


ENDURANCE 44







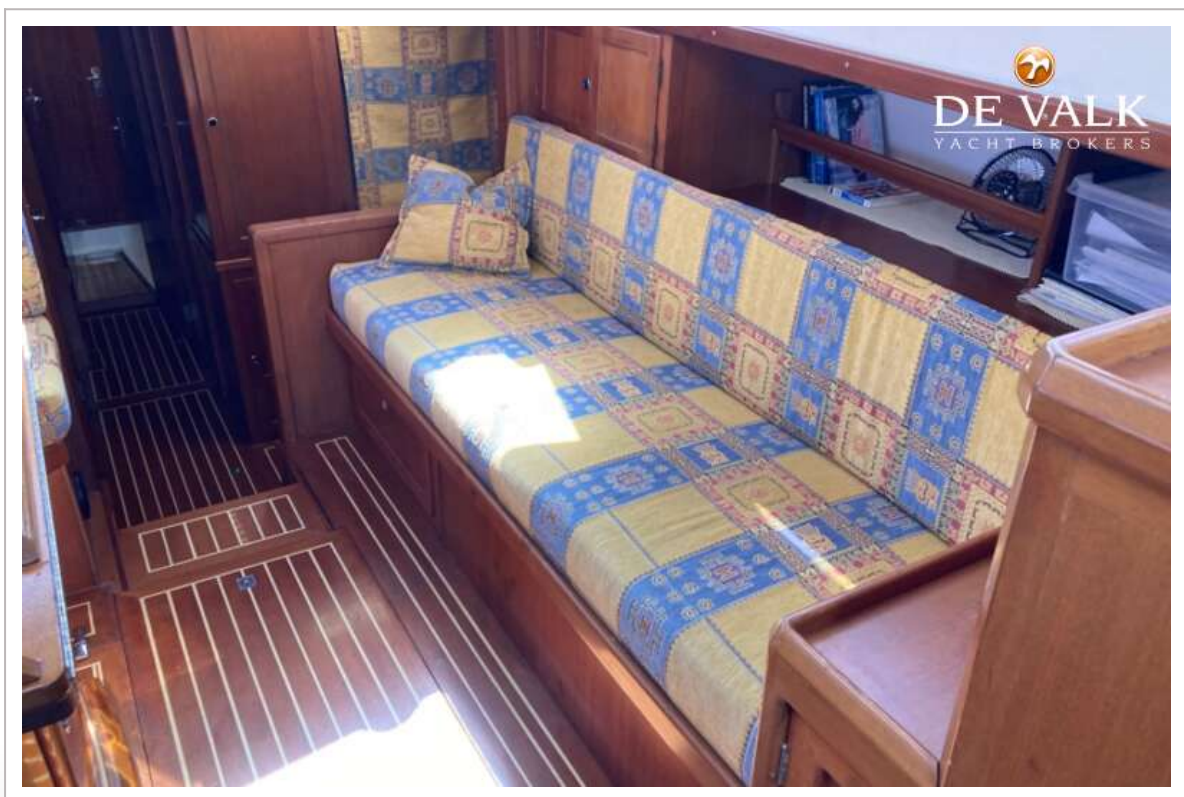




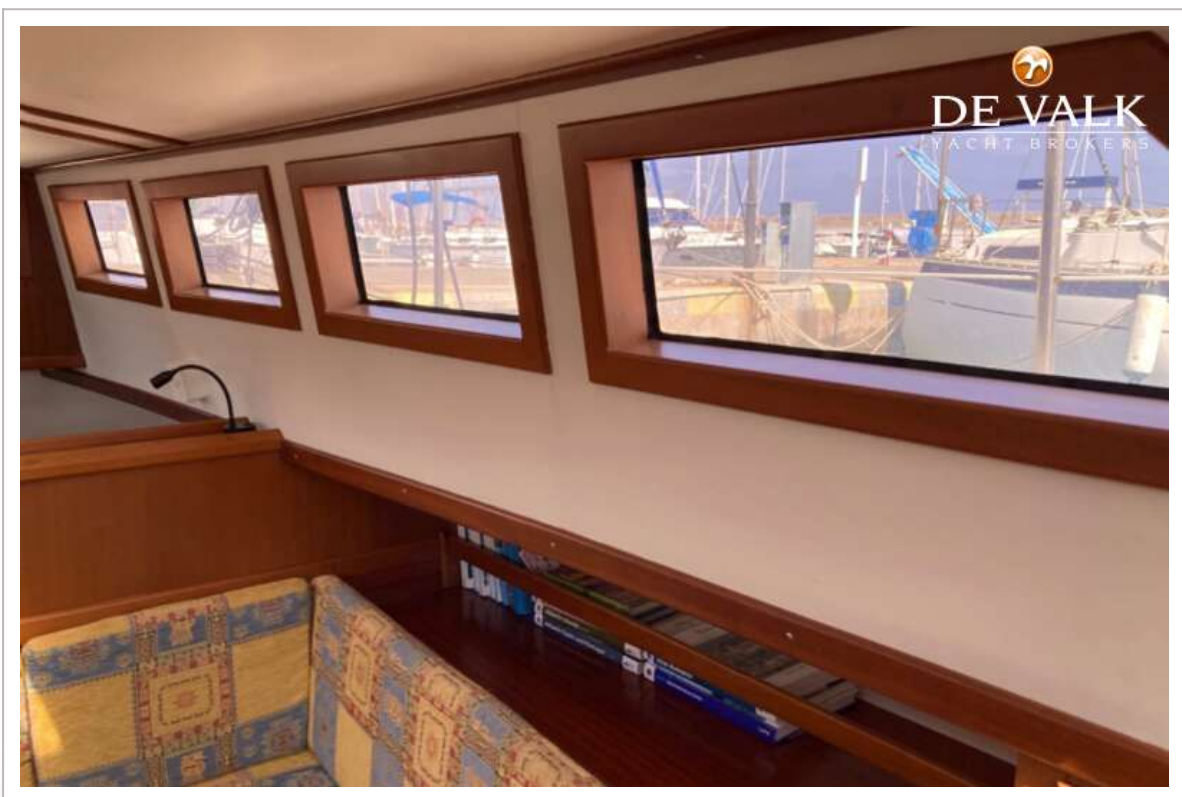




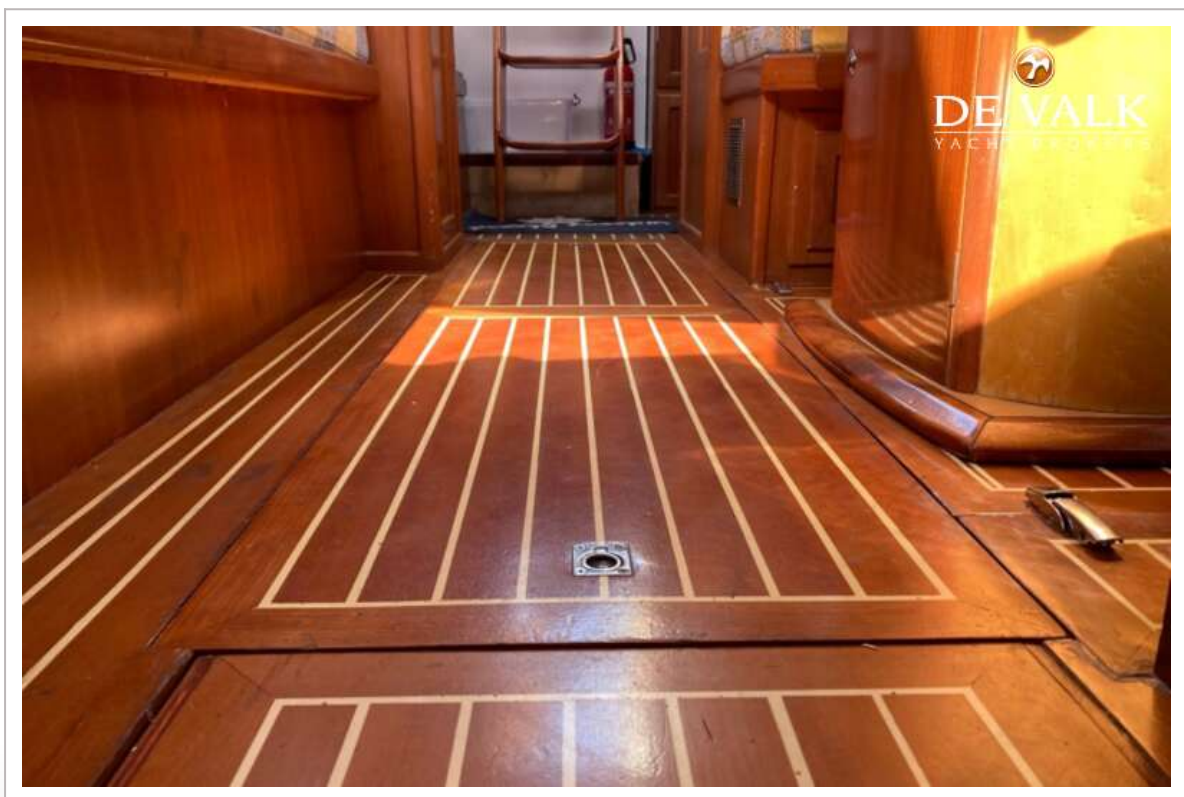
ENDURANCE 44

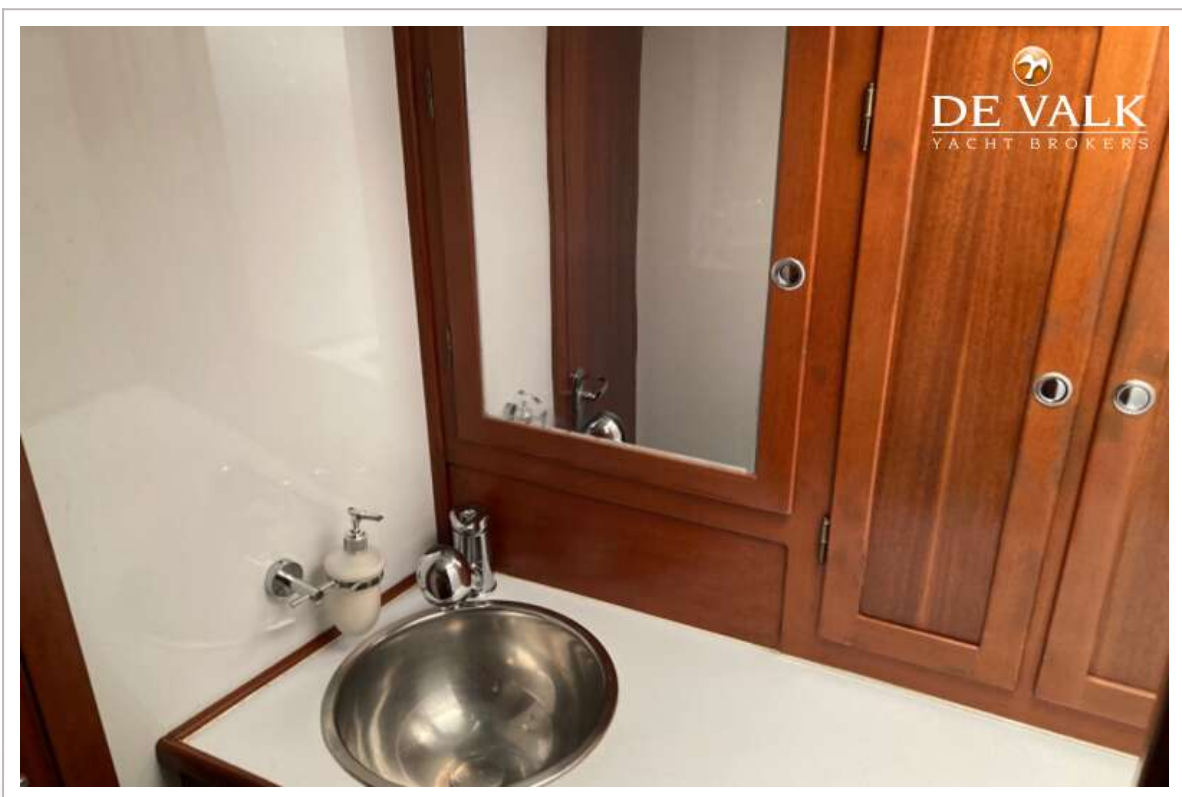


ENDURANCE 44



ENDURANCE 44





ENDURANCE 44

