



## BAVARIA 33 CRUISER



# BAVARIA 33 CRUISER

## BROKER'S COMMENTS

The Kia Ora is a very nice example of the compact but capable Bavaria 33 Cruiser. She is from the original owner, has all the right options and electronics, with recent sails (stoway mainsail and furling jib), with recent saildrive seal and her maintenance is fully documented. She sleeps up to 6 in two cabins and a spacious saloon. No teak deck except in the cockpit, so no costly future repairs. Come and see this Bavaria 33 Cruiser for yourself at De Valk Zeeland. She won't be on the market long!

*Nick Lanting*

## SPECIFICATIONS

<b>Dimensions</b>	10.65 x 3.48 x 1.91 (m)	<b>Builder</b>	Bavaria Yachtbau GmbH
<b>Built</b>	2006	<b>Cabins</b>	2
<b>Material</b>	GRP	<b>Berths</b>	6
<b>Engine(s)</b>	1 x Volvo Penta D1-30 diesel	<b>Hp/Kw</b>	29.00 (hp), 21.32 (kw)
<b>Asking price</b>	sold (VAT )	<b>Lying</b>	at sales office

## CONTACT

<b>Sales office</b>	De Valk Sint Annaland B.V.	<b>Telephone</b>	+31 (0)166 601 000
<b>Address</b>	Koelhuisweg 4 4697 RM Sint Annaland NL	<b>E-mail</b>	sintannaland@devalk.nl

## DISCLAIMER

These particulars are given in good faith as supplied but cannot be guaranteed.



# BAVARIA 33 CRUISER

## GENERAL

Model	BAVARIA 33 CRUISER
Type	sailing yacht
LOA (m)	10,65
LWL (m)	9,00
Beam (m)	3,48
Draft (m)	1,91
Air draft (m)	14,82
Headroom (m)	1,88
Year built	2006
Builder	Bavaria Yachtbau GmbH
Country	Germany
Designer	J&J Design
Displacement (t)	5,4
CE norm	A
Hull material	GRP
Hull colour	white
Hull shape	round-bilged
Keel type	fin keel Keel mounting inspected yearly
Superstructure material	GRP
Rubbing strake	aluminum
Deck material	GRP
Deck finish	non-skid moulded in
Superstructure deck finish	non-skid moulded in
Cockpit deck finish	teak
Antifouling (year)	Done yearly, last time in 03/2021
Deckhatch	yes
Portholes	aluminium
Fuel tank (litre)	polyethylene 120
Level indicator (fuel tank)	yes
Freshwater tank (litre)	polyethylene 200



# BAVARIA 33 CRUISER

Blackwater tank (litre)	polyethylene 30
Level indicator (blackwater)	Not working
Wheel steering	cable steering Lewmar
Emergency tiller	yes
More info on hull	2016 keel stripped bare and repainted

## ACCOMMODATION

Cabins	2
Berths	6
Interior	cherry
Floor	teak and holly
Open cockpit	yes
Saloon	yes
Headroom saloon (m)	1,88
Heating	Webasto, with outlet in bathroom
Navigation center	yes
Chart table	yes
Aft Cabin	yes
Dinette	yes
Galley	yes
Countertop	plastic
Sink	stainless steel
Cooker	calor gas ENO
Gas alarm	CO meter (needs new battery)
Fridge	Toploading
Hot water system	220V + engine
Water pressure system	electrical
Owners cabin	v-bed Forward
Bed length (m)	2,00 x 2,00/0,50
Wardrobe	hanging and shelves
Bathroom	separate



# BAVARIA 33 CRUISER

Toilet	shared
Toilet system	manual Jabsco
Wash basin	in the bathroom
Shower	shared
Extra info	Bed slats
Guest cabin 1	double bed Aft
Bed length (m)	2,00 x 1,60
Wardrobe	hanging and shelves
Extra info	Calor gas system checked 2018
Extra info	LED lights in cabin

## MACHINERY

No of engines	1
Make	Volvo Penta
Type	D1-30
HP	29
kW	21,32
Fuel	diesel
Year installed	2006
Maximum speed (kn)	7
Cruising speed (kn)	6
Consumption (l/hr)	3
Engine hours	700
Engine cooling system	freshwater heat exchanger With cooling water bypass for extra safety
Drive	sail-drive
Saildrive seal	New 03/2021 (including service)
Engine controls	bowden cable
Exhaust	watercooled
Propeller type	folding Volvo Penta
Propeller blades	3



# BAVARIA 33 CRUISER

Manual bilge pump	yes
Electric bilge pump	yes
Electrical installation	12 V / 220 V
Batteries	3 x
Start battery	1 x gel (2018)
Service battery	2 x 120 Ah gel (2018)
Battery charger	Victron automatic trickle charger
Inverter	Victron
Shorepower	with cable
Extra info	Service history documented, engine service 12/2020
Extra info	Rudder bearing new 03/2021 (improved)
Extra info	Extra diesel filter

## NAVIGATION

Compass	Plastimo
Electric compass	Gyro, in autopilot
Depth sounder/log	Raymarine ST60+
Windset	Raymarine ST60+
VHF	Raymarine Ray240E DSC
VHF handheld	Raymarine Ray101E (needs new battery)
Autopilot	Raymarine ST6002 / S1G
Radar	Raymarine Digital 2 kW (2015)
GPS	Raystar 125
Radar/GPS/plotter	Raymarine C9S (2015)
Electronic chart(s)	Navionics XG28 (2021 updated)
AIS receiver	AIS 650
Navigation lights	yes
Extra info	Engine hour meter not working

## EQUIPMENT

Sprayhood with grab rail	New windows (2021)
--------------------------	--------------------



# BAVARIA 33 CRUISER

Cockpit cover	yes
Winter cover	2013 (cockpit only)
Bathing platform	yes
Boarding ladder	stainless steel
Anchor	CQR Plough 15 kg
Anchor chain	50 m
Anchor 2	Stern
Anchor chain	Chain and line
Windlass	electrical Lewmar
Sea railing	Wire renewed (2020)
Grab rail (superstructure)	
Pushpit	yes
Pulpit	yes
Life raft	valise (or bag) Arimar Seaworld (05/2018)
Life raft (pers)	4
Last life raft survey	02/2021
Lifejackets	4 x Secumar (checked 02/2020)
Lifebuoy	3 x
Danbuoy	yes
Radar reflector	In mast (blipper)
Fenders	yes
Mooring lines	yes
Spare parts	Toilet pump, multibelt, oil filters, anodes, impeller
Radio-cd player	yes
Speakers in salon	yes
Fire extinguisher	3 x
Latest extinguisher survey	2021
Extra info	Helm column cover
Extra info	Two steering wheels, 75 cm and 95 cm
Extra info	Lots of accessories are included



# BAVARIA 33 CRUISER

## RIGGING

Rigging	sloop
Standing rigging	wire Yearly visually inspected
Brand mast	Seldén
Material mast	aluminium
Spreaders	2 x 2
Mainsail	M-Sails Endurance Ocean Cruising Line 03/2020
Stoway mast	yes
Jib	Hardly ever used
High aspect	Van Vliet 100% 23 m2 (2007) (furling)
Genoa furler	Furlex 200S
Genoa cover	2014
Reefing System	main in-mast furling
Boomvang	gasspring Seldén Rodkicker
Genoa sheetwinches	2 x Lewmar 30
Halyard winches	2 x Lewmar 16
Spi-pole	aluminium Extendable
Extra info	Original mainsail as reserve
Extra info	Easy-gibe system





# BAVARIA 33 CRUISER



# BAVARIA 33 CRUISER





# BAVARIA 33 CRUISER

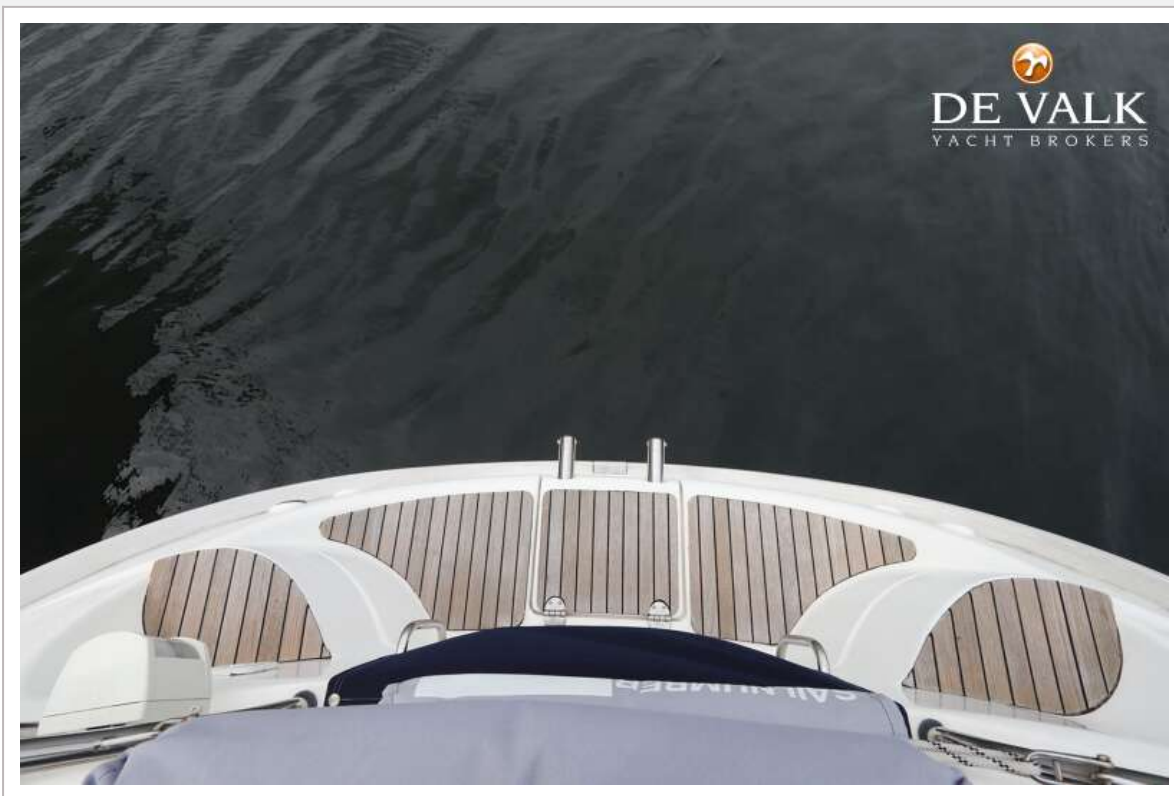


# BAVARIA 33 CRUISER

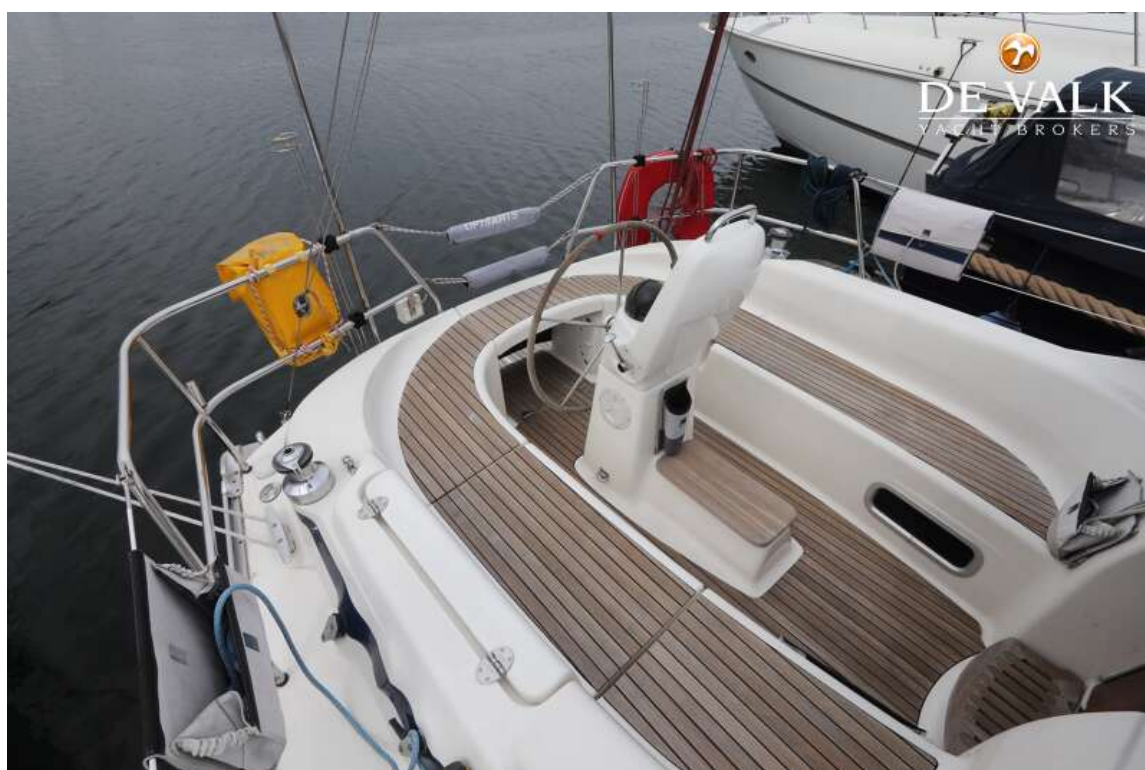




# BAVARIA 33 CRUISER



# BAVARIA 33 CRUISER

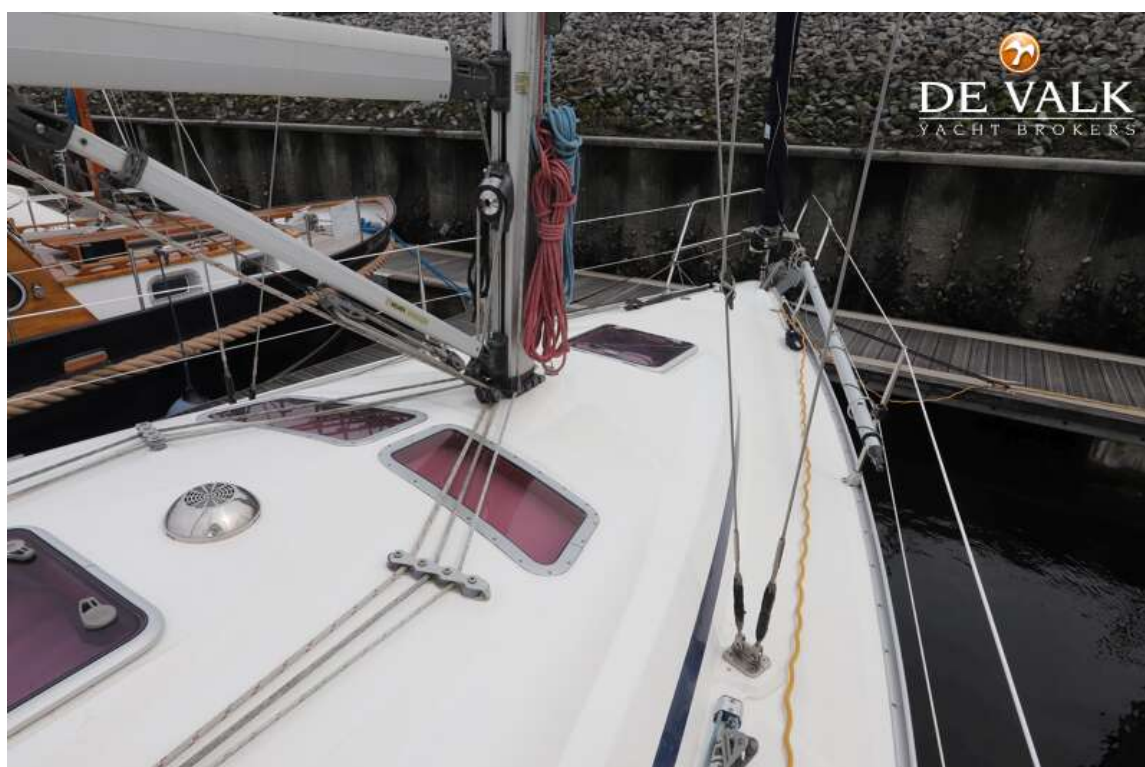




# BAVARIA 33 CRUISER



# BAVARIA 33 CRUISER





# BAVARIA 33 CRUISER



# BAVARIA 33 CRUISER





# BAVARIA 33 CRUISER



# BAVARIA 33 CRUISER





# BAVARIA 33 CRUISER



# BAVARIA 33 CRUISER

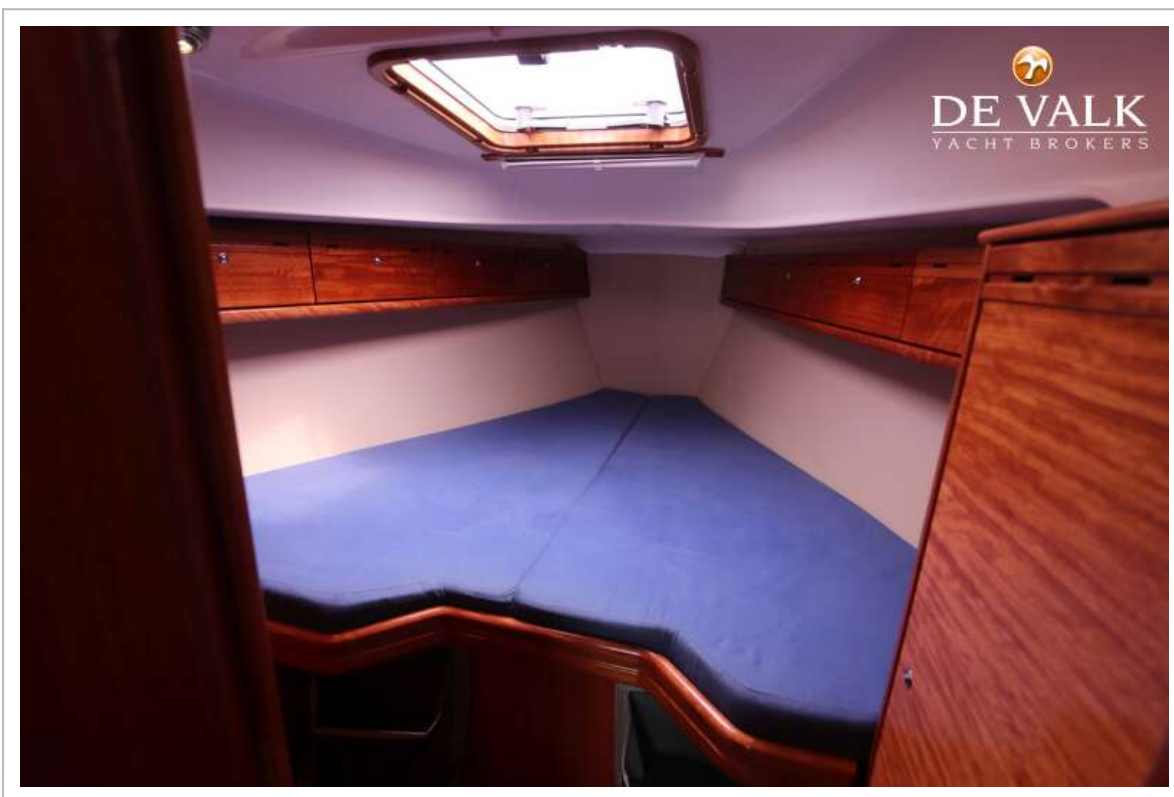
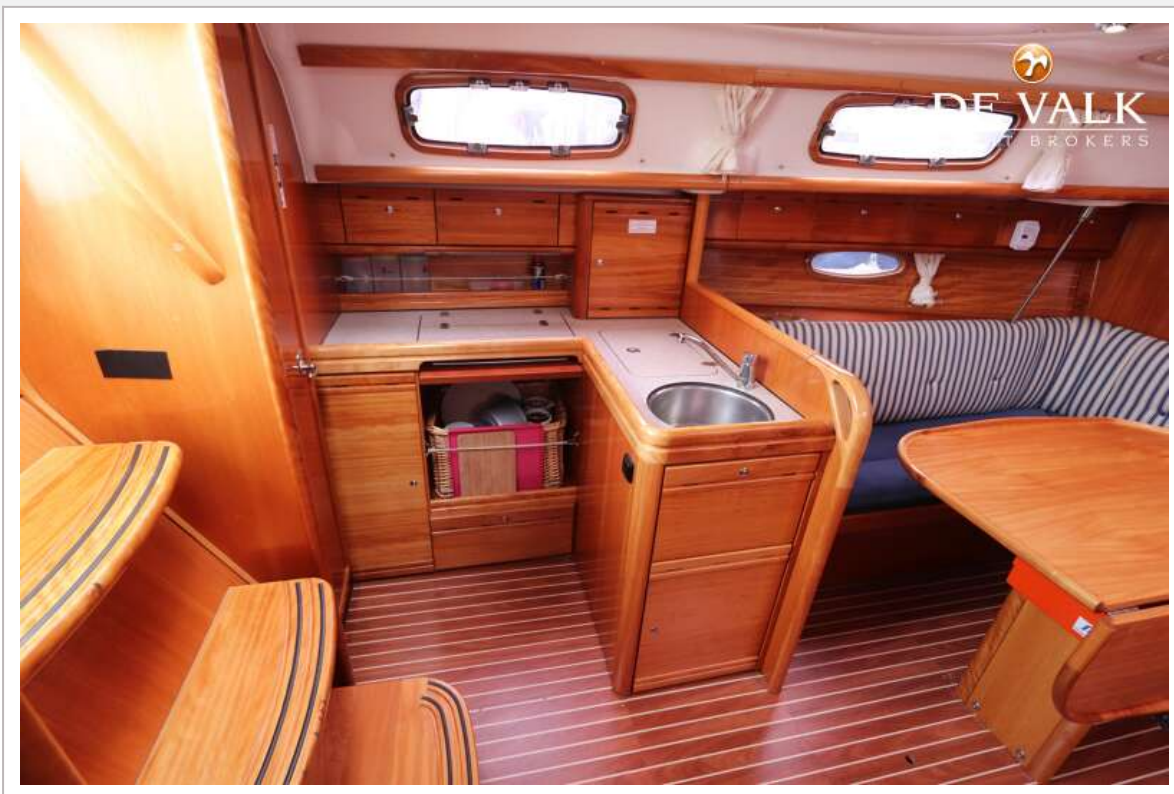




# BAVARIA 33 CRUISER

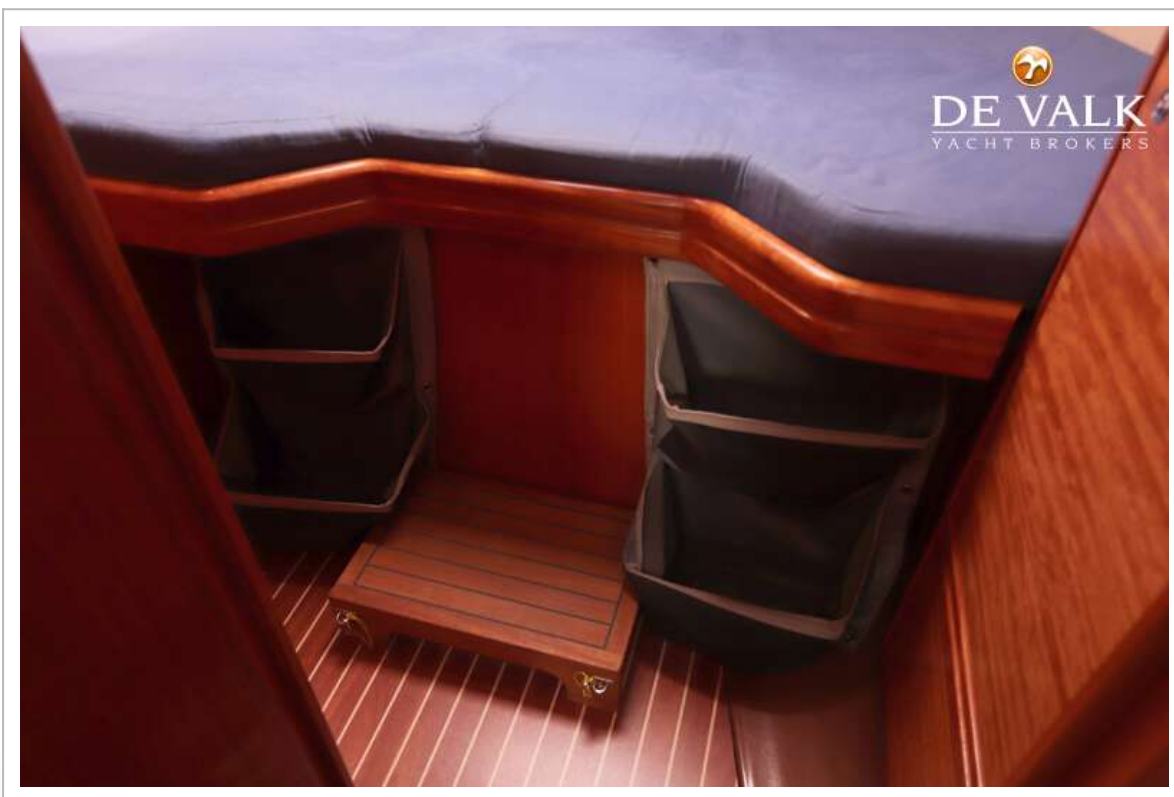
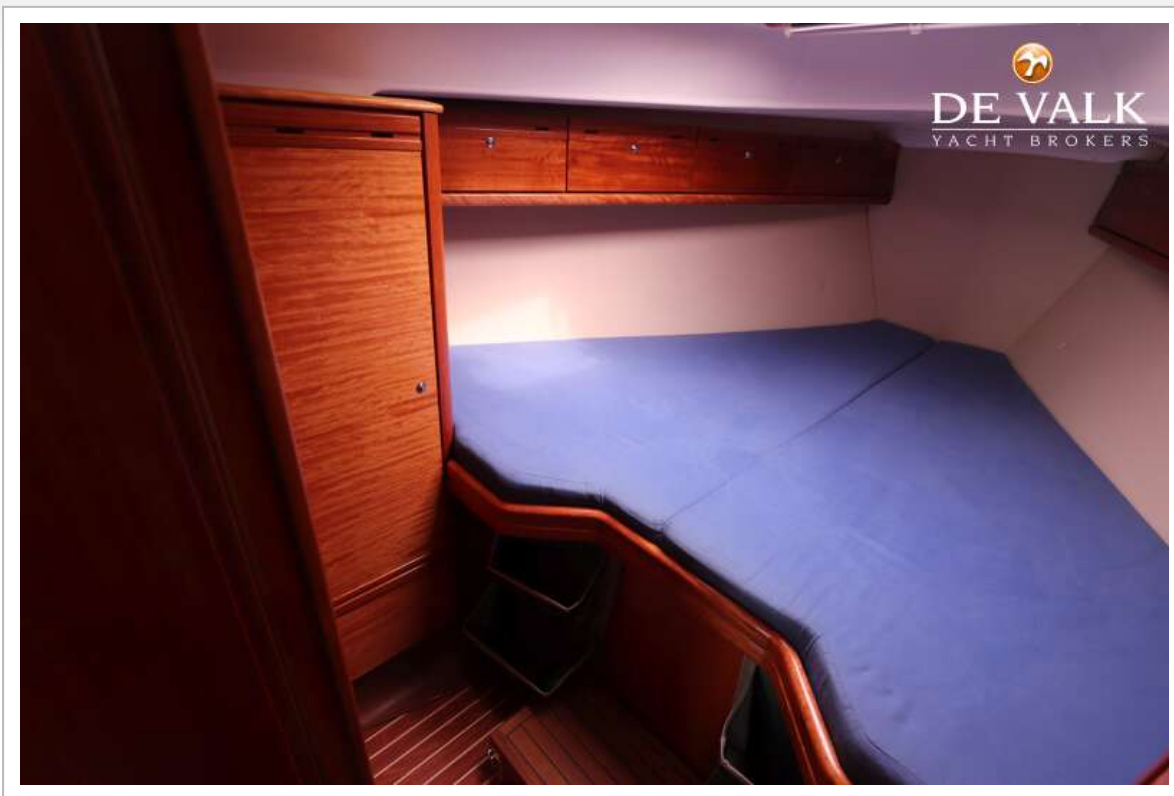


# BAVARIA 33 CRUISER





# BAVARIA 33 CRUISER



# BAVARIA 33 CRUISER

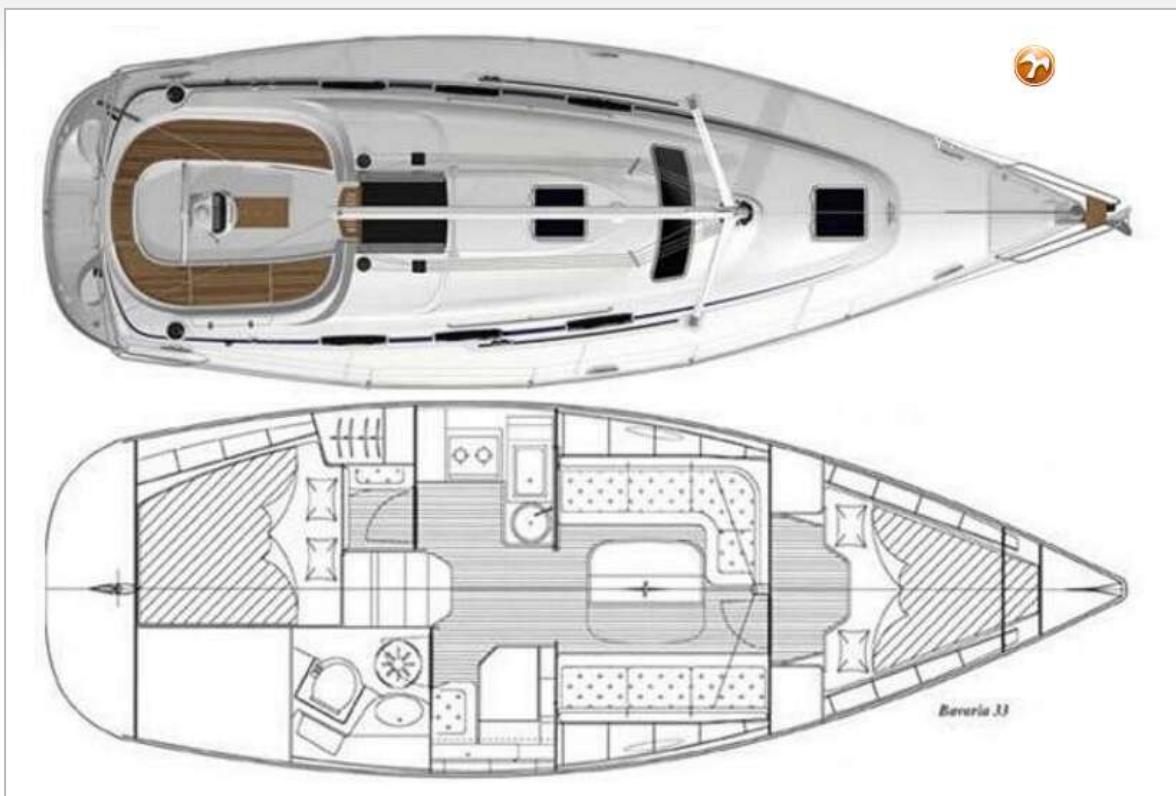


# BAVARIA 33 CRUISER





# BAVARIA 33 CRUISER



# BAVARIA 33 CRUISER



# BAVARIA 33 CRUISER

