



C-YACHT 1250I

BROKER'S COMMENTS

This hardly used C-Yacht 12.50 "Suzie Wong" is a nice blue water cruising yacht. When sailing she gives a comfortable and safe feeling because of her centre cockpit in all circumstances. She is an easy sailor with her electric furling main, electric furling High Aspect and electric halyard winch. She is equipped with all the goodies you need. The spacious interior is designed for short and long holidays but also to sail with a crew. She can be visit 7 days a week in Hindeloopen.

Henri van Eelen

SPECIFICATIONS

Dimensions	12.88 x 3.90 x 1.80 (m)	Builder	Zaadnoordijk Yachtbuilders
Built	2018	Cabins	2
Material	GRP	Berths	6
Engine(s)	1 x Yanmar 4JH57 diesel	Hp/Kw	50.00 (hp), 36.80 (kw)
Asking price	sold (VAT)	Lying	at sales office

CONTACT

Sales office	De Valk Hindeloopen B.V.	Telephone	+31 514 52 40 00
Address	Oosterstrand 1 8713 JS Hindeloopen NL	E-mail	hindeloopen@devalk.nl

DISCLAIMER

These particulars are given in good faith as supplied but cannot be guaranteed.



GENERAL

Model	C-YACHT 1250I
Type	sailing yacht
LOA (m)	12,88
LWL (m)	10,90
Beam (m)	3,90
Draft (m)	1,80
Air draft (m)	19,20
Headroom (m)	2,05
Year built	2018
Builder	Zaadnoordijk Yachtbuilders
Country	The Netherlands
Designer	Frans Maas
Displacement (t)	11
Ballast (tonnes)	lead 4,3
CE norm	A
Hull material	GRP
Hull colour	white
Hull shape	round-bilged
Keel type	fin keel
Deck material	GRP
Deck finish	Permateek
Superstructure deck finish	non-skid moulded in
Cockpit deck finish	Permateek
Dorades	2x
Window frame	aluminium
Window material	tempered glass
Deckhatch	3x Gebo
Portholes	aluminium
Fuel tank (litre)	stainless steel 250 ltr.
Level indicator (fuel tank)	yes



Freshwater tank (litre)	stainless steel 320 ltr.
Level indicator (freshwater)	yes
Blackwater tank (litre)	80 ltr. - High-density polyethylene
Level indicator (blackwater)	yes
Blackwater tank extraction	deck extraction + uw line
Wheel steering	mechanical Jeva steering console
Emergency tiller	yes

ACCOMMODATION

Cabins	2
Berths	6
Interior	Horizontally veneered teak - Club interior
Floor	teak and holly
Saloon	yes
Headroom saloon (m)	2,05 mtr.
Heating	diesel ducted hot air Webasto AirTop Evo
Navigation center	yes
Chart table	yes
Aft Cabin	Owners cabin
Galley	yes
Countertop	corian
Sink	Double sink
Cooker	calor gas Force10 - 3 burner
Oven	In cooker
Microwave	Constructa
Fridge	Isotherm - toploader
Hot water system	220V + engine Quick boiler - 60 ltr.
Water pressure system	electrical
Owners cabin	double bed Aft cabin
Bed length (m)	2.05 × 1.60 mtr.
Wardrobe	hanging/drawers/shelves



Bathroom	shared
Toilet	Jabsco
Toilet system	manual
Wash basin	Corian
Shower	
Guest cabin 1	double bed + single bed
Bed length (m)	2 mtr.
Wardrobe	hanging and shelves

MACHINERY

No of engines	1
Make	Yanmar
Type	4JH57
HP	50
kW	36,80
Fuel	diesel
Year installed	2018
Maximum speed (kn)	7
Cruising speed (kn)	8
Engine hours	213
Engine cooling system	freshwater heat exchanger
Drive	sail-drive
Saildrive seal	yes
Engine controls	bowden cable
Gearbox	mechanical Yanmar SD60
Bowthruster	electric MaxPower
Exhaust	watercooled
Propeller type	folding Flex-o-fold
Propeller blades	3
Manual bilge pump	yes
Electric bilge pump	yes



Bilge alarm	yes
Electrical installation	12 / 220 Volt
Start battery	1x 56Ah
Service battery	4x 105Ah
Battery monitor	Mastervolt Battery Monitor BTM - III
Battery charger/inverter	Mastervolt Mass Combi 12/2200-100 (230 V)
Shorepower	with cable

NAVIGATION

Compass	Plastimo Contest
Depth sounder	Raymarine i50
Log	Raymarine i50
Windset	2x Raymarine i60
VHF	Raymarine Ray60 Multifunction Radio System + RayMic 2nd handset at helm
Autopilot	Raymarine Evolution p70 met ASU400
Plotter	2x Raymarine Axiom pro 9"
Navtex	Easy Navtex
AIS transceiver	Raymarine AIS650 + AIS 100 splitter
EPIRB	Kannad Marine
Navigation lights	LED

EQUIPMENT

Sprayhood	yes
Cockpit cover	yes
Cockpit table	yes
Bathing platform	yes
Boarding ladder	stainless steel
Bow ladder	yes
Deck shower	yes
Anchor	CQR Plough



Anchor chain	yes
Windlass	electrical Lewmar
Sea railing	
Grab rail (superstructure)	stainless steel
Railing side opening gates	yes
Pushpit	With teak seats
Pulpit	yes
Life raft	container Transocean
Life raft (pers)	6
Danbuoy	yes
Radar reflector	Tri-lens
Fenders	yes
Mooring lines	yes
Radio-cd player	JVC
Cockpit speakers	2x splashproof
Speakers in salon	2x
Fire extinguisher	3x

RIGGING

Rigging	Fractional Sloop
Standing rigging	wire
Brand mast	Seldén
Material mast	aluminium
Spreaders	2 pair
Mainsail	UK de Vries Sails - offshore Performance - 44.55m ²
Stoway mast	Electric operated
High aspect	UK de Vries sails - offshore Performance - 40.01m ²
Genoa furler	Furlex 300E - electric
Gennaker	UK de Vries Sails - 110.94m ²
Stormjib	9m ²
Reefing System	main in-mast furling



Backstay adjuster	mechanical Seldén
Boomvang	gasspring Seldén Rodkicker 20
Primary sheet winch	2x Andersen 40
Genoa sheetwinches	2x Andersen 52
Halyard winches	2x Andersen 40 - one electric



C-YACHT 1250I



C-YACHT 1250I



C-YACHT 1250I



C-YACHT 1250I



C-YACHT 1250I



C-YACHT 1250I



C-YACHT 1250I



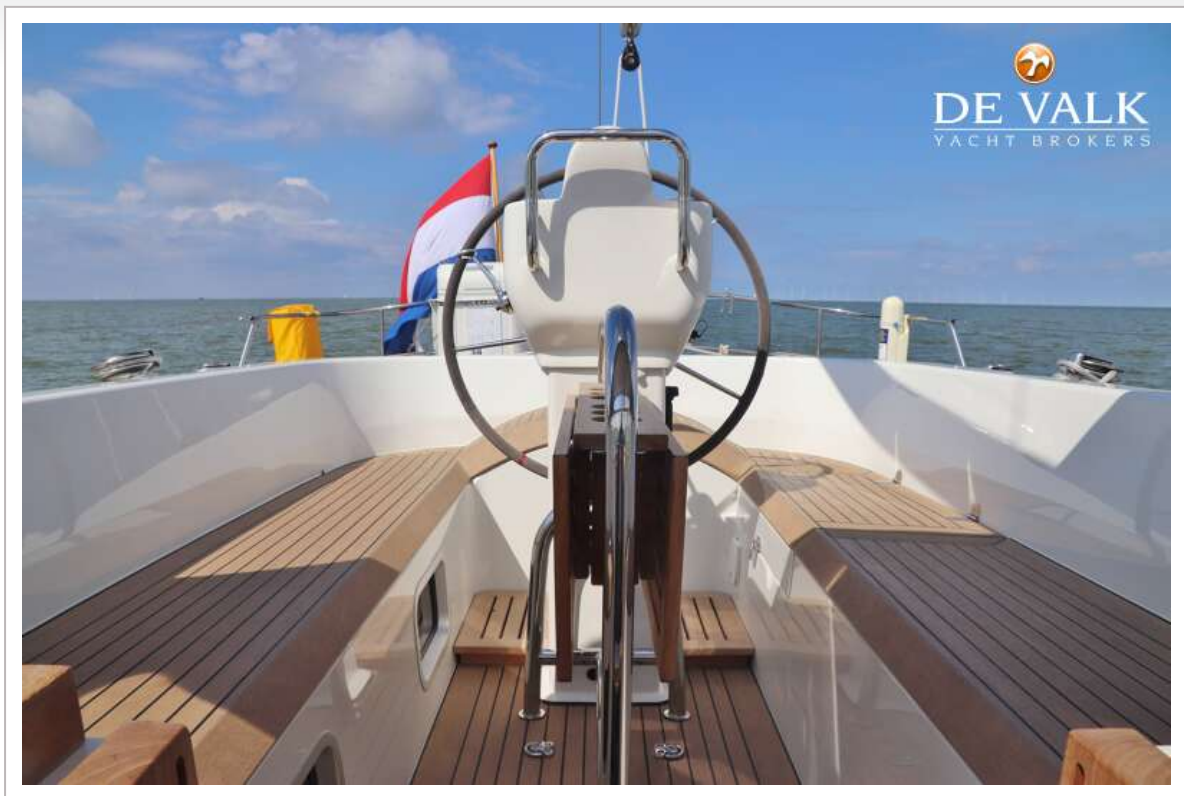
C-YACHT 1250I



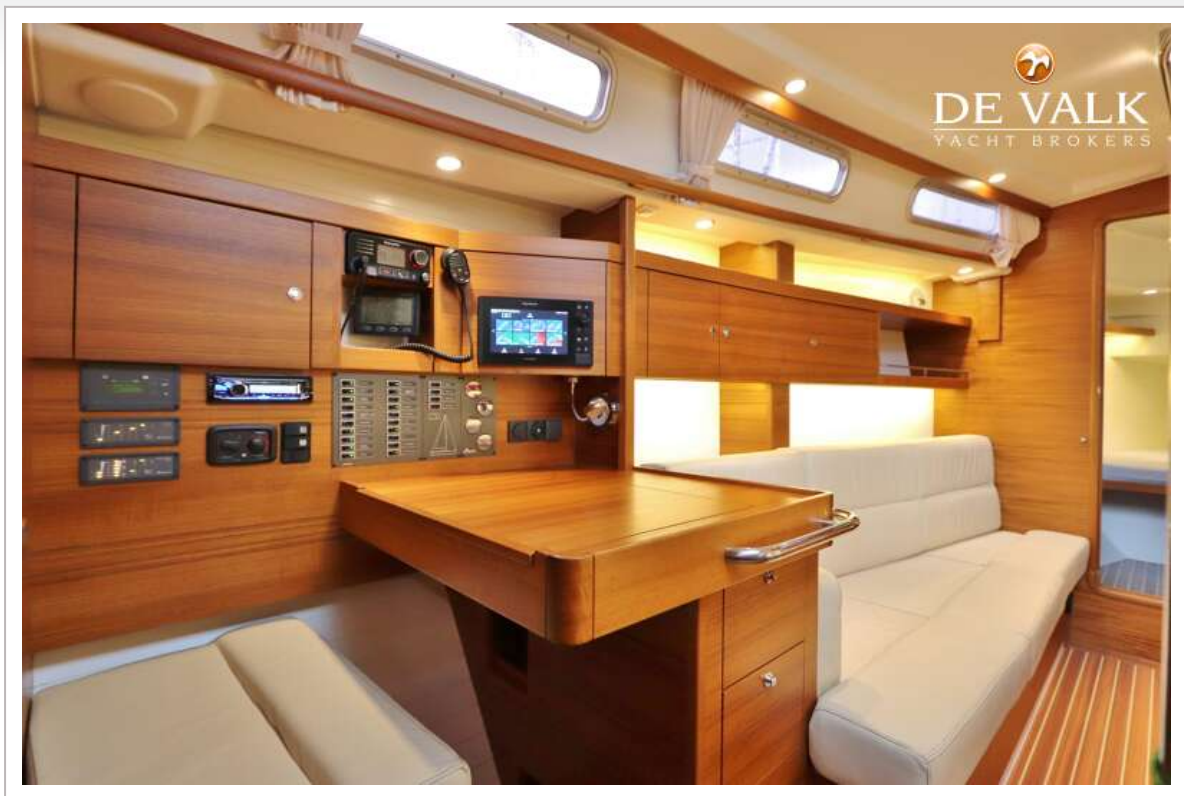
C-YACHT 1250I



C-YACHT 1250I



C-YACHT 1250I



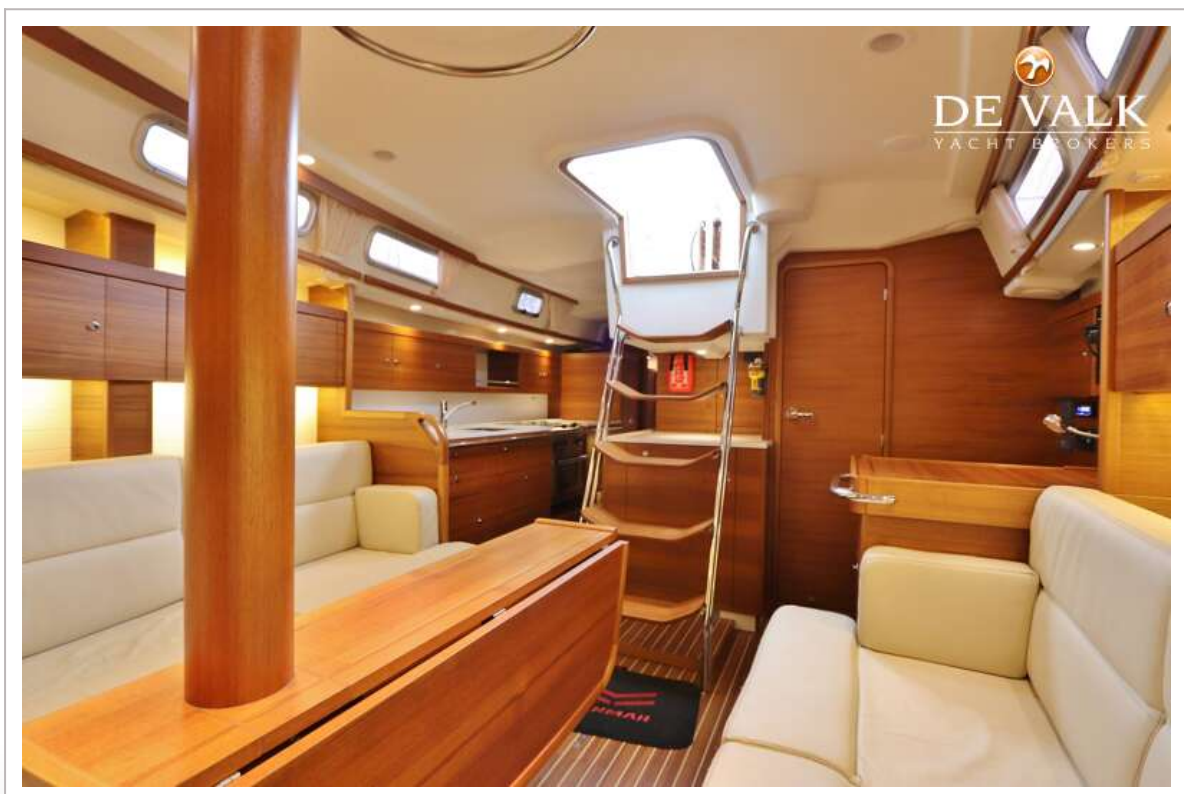
C-YACHT 1250I



C-YACHT 1250I



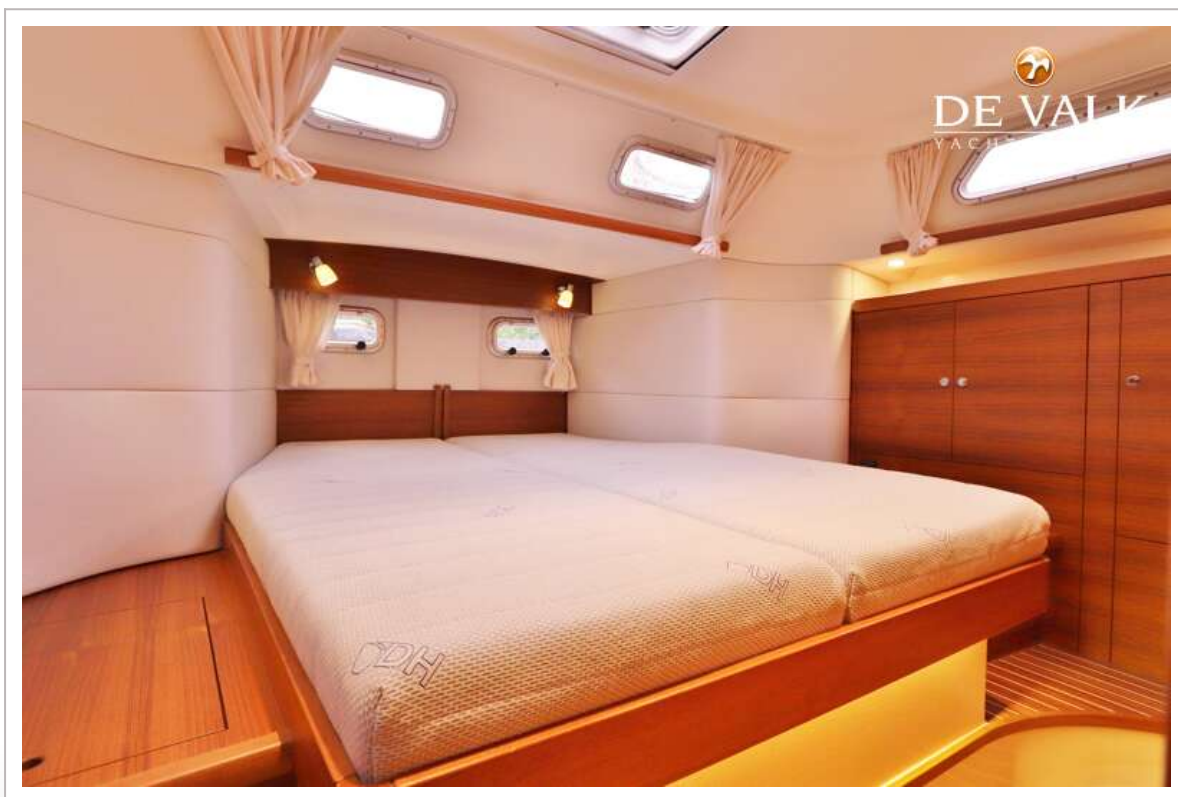
C-YACHT 1250I



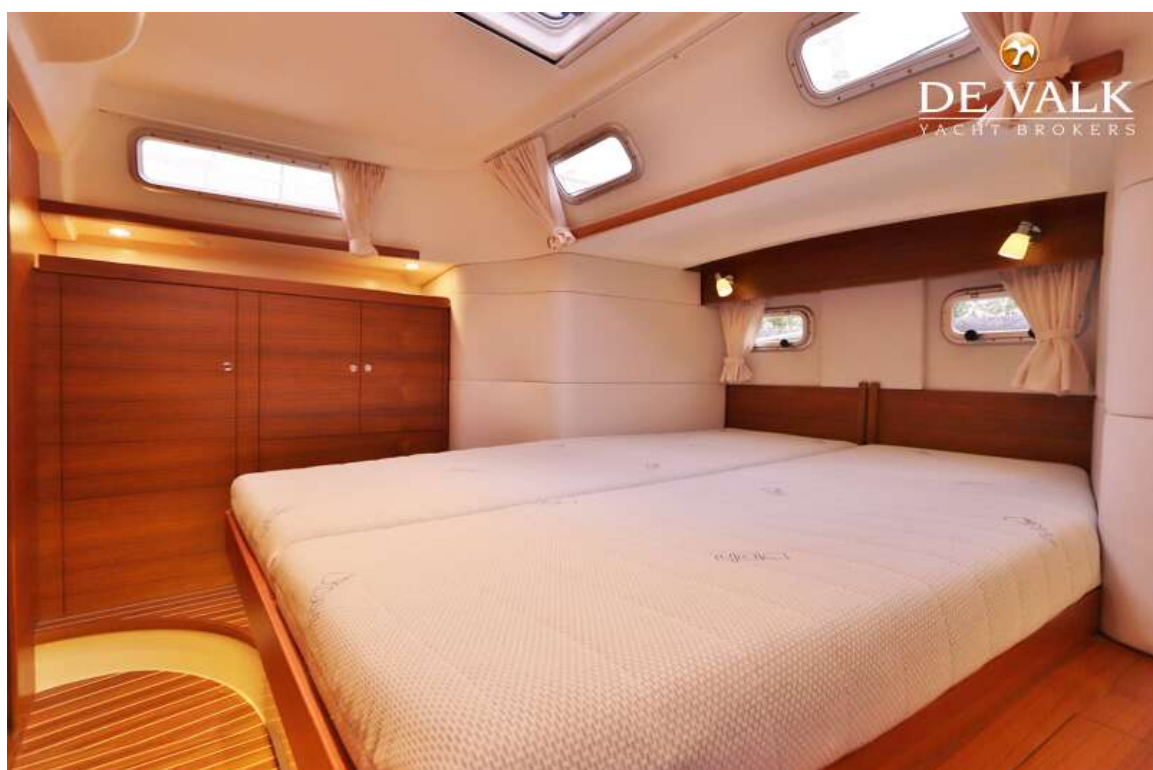
C-YACHT 1250I



C-YACHT 1250I



C-YACHT 1250I



C-YACHT 1250I



