



DE VALK  
YACHT BROKERS



VIVANTE 48 PH



DE VALK  
YACHT BROKERS

# VIVANTE 48 PH

## BROKER'S COMMENTS

Vivante 48 Pilot House, a motor yacht with all comfort and luxury on board. Just a few things to mention: Central heating, Double glass, Generator, Bow & stern thruster with remote control, Electric windlass, Washing machine dryer. The interior is stylish, and made of high quality materials. You must have seen this motor yacht. The Vivante 48 PH can be viewed 7 days a week in our covered sales harbor in Sneek.

*Henk de Vries*

## SPECIFICATIONS

<b>Dimensions</b>	14.40 x 4.75 x 1.20 (m)	<b>Builder</b>	Pollard Jachtbouw Steenwijk
<b>Built</b>	2013	<b>Cabins</b>	2
<b>Material</b>	Steel	<b>Berths</b>	4
<b>Engine(s)</b>	1 x Iveco NEF150 6 cil. diesel	<b>Hp/Kw</b>	150.00 (hp), 110.25 (kw)
<b>Asking price</b>	sold (VAT )	<b>Lying</b>	at sales office

## CONTACT

<b>Sales office</b>	De Valk Sneek	<b>Telephone</b>	+31 515 42 80 30
<b>Address</b>	Zwolsmanweg 7 8606 KC Sneek The Netherlands	<b>E-mail</b>	sneek@devalk.nl

## DISCLAIMER

These particulars are given in good faith as supplied but cannot be guaranteed.



## GENERAL

<b>Model</b>	VIVANTE 48 PH
<b>Type</b>	motor yacht
<b>LOA (m)</b>	14,40
<b>Beam (m)</b>	4,75
<b>Draft (m)</b>	1,20
<b>Air draft (m)</b>	3,45
<b>Headroom (m)</b>	2,00
<b>Year built</b>	2013
<b>Builder</b>	Pollard Jachtbouw Steenwijk
<b>Country</b>	The Netherlands
<b>Designer</b>	Visser Yachtdesign
<b>Displacement (t)</b>	25
<b>CE norm</b>	B
<b>Hull material</b>	steel
<b>Hull colour</b>	blue Metallic
<b>Hull thickness (mm)</b>	6
<b>Hull shape</b>	round-bilged
<b>Keel type</b>	long keel
<b>Bilge keels</b>	yes
<b>Superstructure material</b>	steel
<b>Superstructure (mm)</b>	5
<b>Deck plate thickness (mm)</b>	5
<b>Rubbing strake</b>	stainless steel
<b>Deck material</b>	steel
<b>Deck finish</b>	synthetic teak
<b>Superstructure deck finish</b>	paint
<b>Cockpit deck finish</b>	synthetic teak
<b>Antifouling (year)</b>	2021
<b>Dorades</b>	yes
<b>Window frame</b>	aluminium Hora



Window material	double glazing Hora
Deckhatch	4x Gebo
Portholes	stainless steel
Insulation	foam
Radar arch	collapsible Stainless steel
Mast can be lowered	manual
Fuel tank (litre)	steel 950
Fuel tank 2 (litre)	steel 950
Level indicator (fuel tank)	VDO
Freshwater tank (litre)	stainless steel 1x 575
Level indicator (freshwater)	VDO
Blackwater tank (litre)	polyethylene 575
Level indicator (blackwater)	VDO
Blackwater tank extraction	yes
Wheel steering	hydraulic
Inside helm position	yes
More info on hull	2019 (romp) nieuw gespoten
More info on paintwork	Metallic

## ACCOMMODATION

Cabins	2
Berths	4
Interior	mahogany
Floor	wood
Open cockpit	yes
Aft deck	yes
Pilot house	yes
Saloon	yes
Headroom saloon (m)	2,0
Heating	Maritime Booster
Dinette	yes



Opening door to aft deck	yes
Galley	yes
Countertop	corian
Sink	Corian
Cooker	ceramic Bosch 4-pits
Microwave/oven combi	Bosch
Fridge	Bosch 151L
Freezer	In fridge
Wine cooler	yes
Hot water system	yes
Water pressure system	electrical
Dishwasher	Bosch Super Silence
Owners cabin	French bed
Bed length (m)	2,0
Wardrobe	hanging/drawers/shelves
Bathroom	shared
Toilet	shared
Toilet system	electric
Wash basin	in the bathroom
Shower	shared
Guest cabin 1	double bed
Bed length (m)	2,0
Wardrobe	hanging and shelves
Washing machine/dryer combi	Bosch Maxx 5Combi

## MACHINERY

No of engines	1
Make	Iveco
Type	NEF150 6 cil.
HP	150
kW	110.25



<b>Fuel</b>	diesel
<b>Year installed</b>	2013
<b>Maximum speed (kn)</b>	10
<b>Cruising speed (kn)</b>	6
<b>Consumption (l/hr)</b>	5
<b>Engine hours</b>	231
<b>Engine cooling system</b>	freshwater heat exchanger
<b>Drive</b>	shaft
<b>Engine controls</b>	Kobelt
<b>Gearbox</b>	hydraulic PRM
<b>Bowthruster</b>	electric Side Power 130Kgf, with remote control
<b>Sternthruster</b>	electric Side Power 100Kgf with remote control
<b>Propeller type</b>	fixed
<b>Propeller blades</b>	4
<b>Propeller shaft material</b>	stainless steel
<b>Shaft lubrication</b>	water
<b>Electric bilge pump</b>	yes
<b>Generator</b>	silent separator Caterpillar 11Kva
<b>Running hours generator</b>	Ca. 189
<b>Batteries</b>	16
<b>Start battery</b>	2x 165 Ah AGM Victron
<b>Service battery</b>	8x 220 Ah AGM Victron
<b>Generator battery</b>	2x 66 Ah AGM Victron
<b>Bowthruster battery</b>	2x 220 Ah AGM Victron
<b>Sternthruster battery</b>	2x 220 Ah AGM Vivtron
<b>Battery monitor</b>	Victron BMV600 & Victron DMC
<b>Battery charger</b>	Victron Blue Power Charger 24/8 & Victron Centaur 24/30
<b>Battery charger/inverter</b>	Victron Quattro Combi 24/5000/120
<b>Shorepower</b>	with cable
<b>Insulation transformer</b>	Victron Isolation Transformer 3600W
<b>Extra info</b>	Dubbel Racor brandstoffilter



## NAVIGATION

Depth sounder/log	Raymarine
VHF	Garmin 100I
Autopilot	Raymarine
Radar/plotter	Raymarine
Wifi antenna	yes
Navigation lights	yes
Searchlight	Jabsco Remote control

## EQUIPMENT

Cockpit cover	yes
Cockpit cushions	yes
Cockpit table	yes
Bathing platform	yes
Boarding ladder	stainless steel
Transom door	yes
Anchor	Pool Stainless Steel
Anchor chain	yes
Windlass	electrical Lofrance Tigres
Deck wash	yes
Davits	stainless steel Uitschuifbaar
Davits controls	Hydraulisch
Sea railing	yes
Grab rail (superstructure)	stainless steel
Wiper	3x Wiper control
Horn	air pressure
Fenders	yes
Mooring lines	yes
TV	2x Flatscreen/ TV lift
Radio	Hertz HWMR 10
iPod connection	yes



Speakers in salon	yes
Clock - barometer	yes
Fire extinguisher	yes
Auto extinguisher system	yes





# VIVANTE 48 PH



# VIVANTE 48 PH



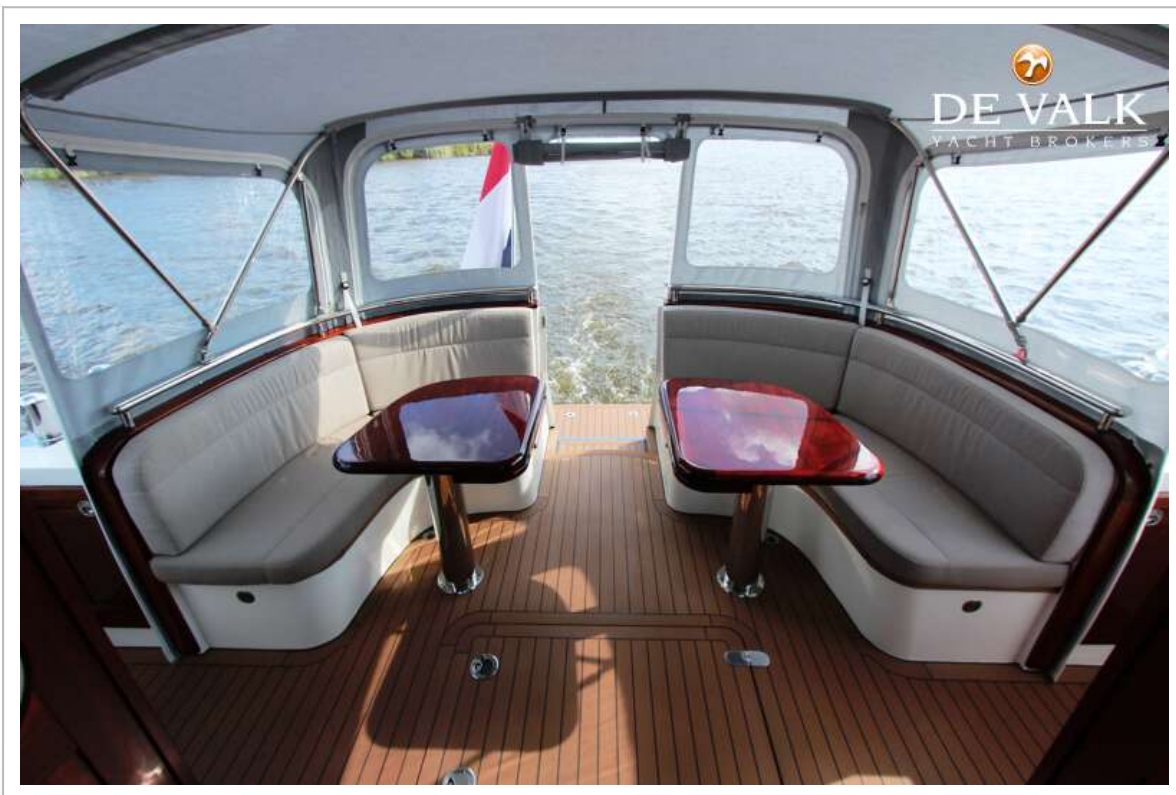
# VIVANTE 48 PH



# VIVANTE 48 PH



# VIVANTE 48 PH



# VIVANTE 48 PH



# VIVANTE 48 PH



# VIVANTE 48 PH

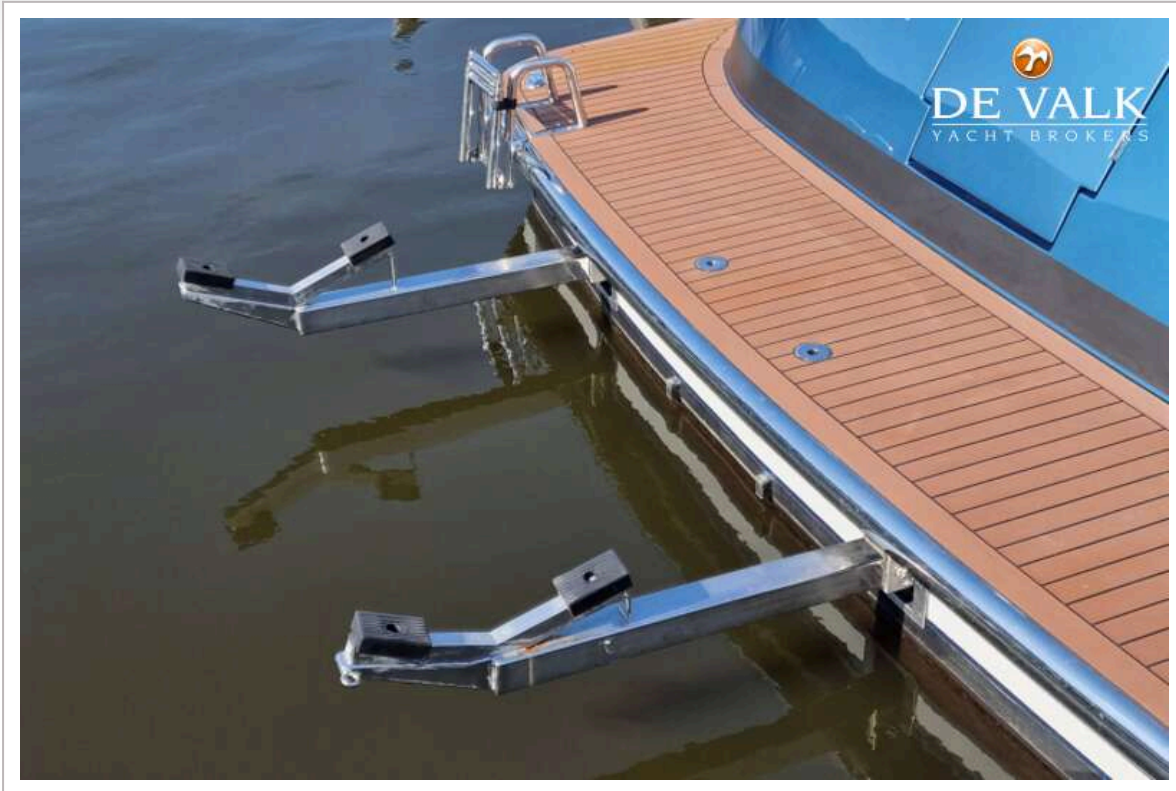




# VIVANTE 48 PH



# VIVANTE 48 PH



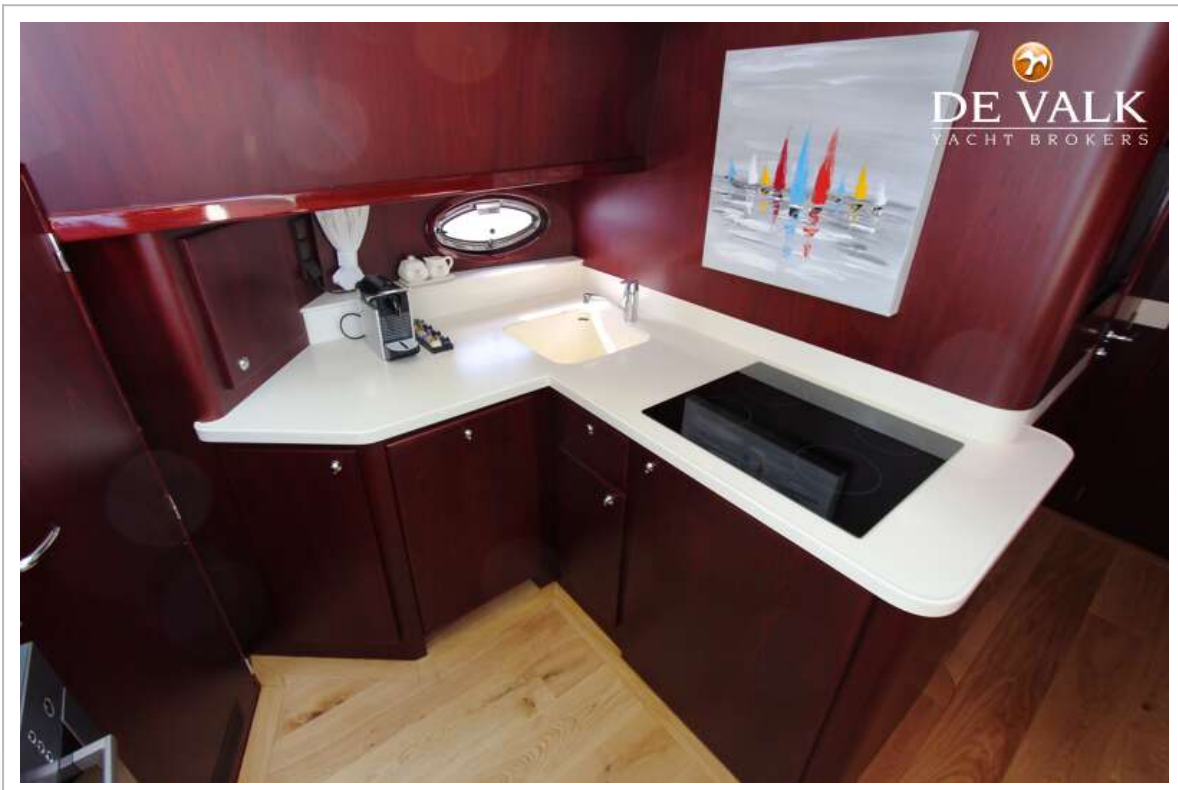
# VIVANTE 48 PH



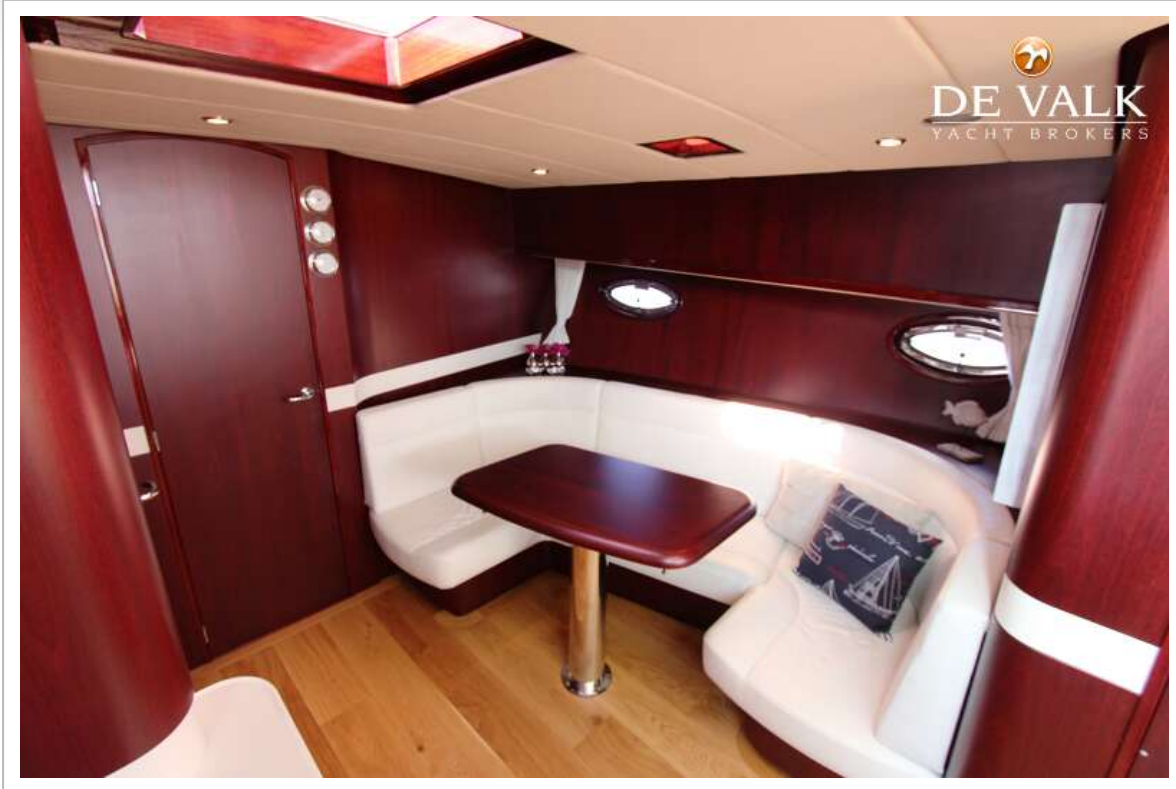
# VIVANTE 48 PH



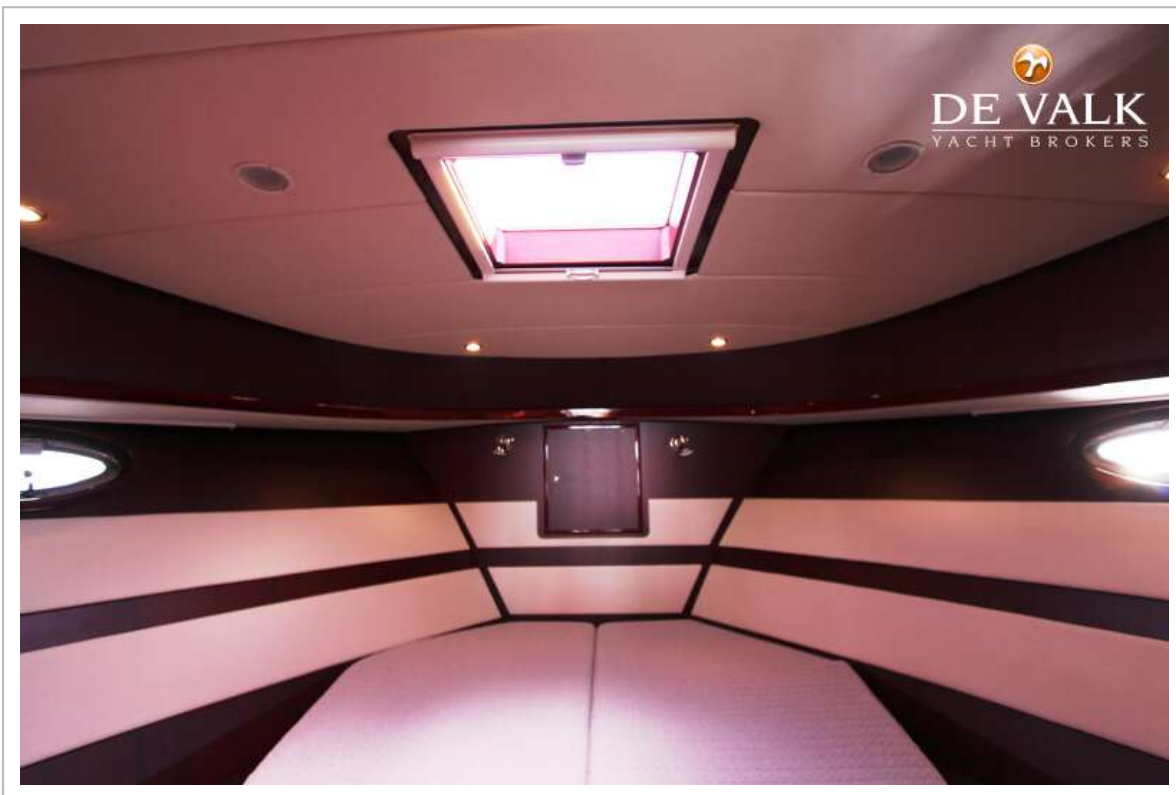
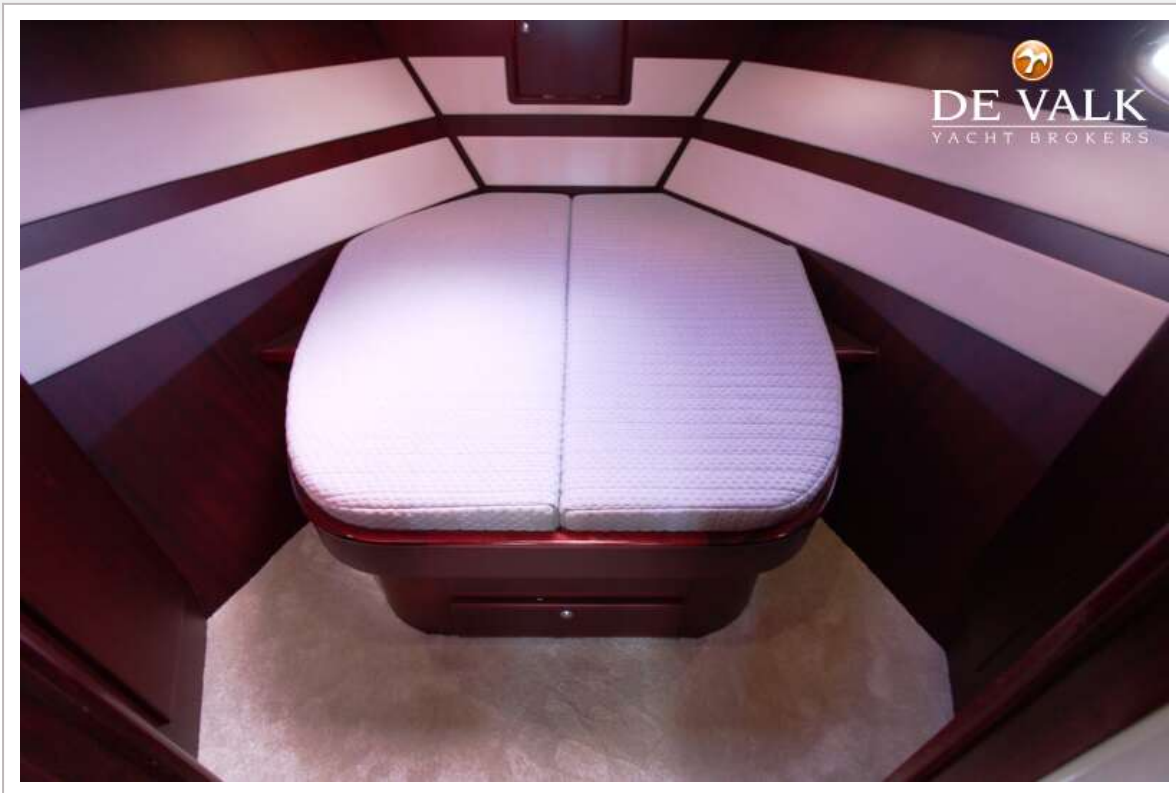
# VIVANTE 48 PH



# VIVANTE 48 PH

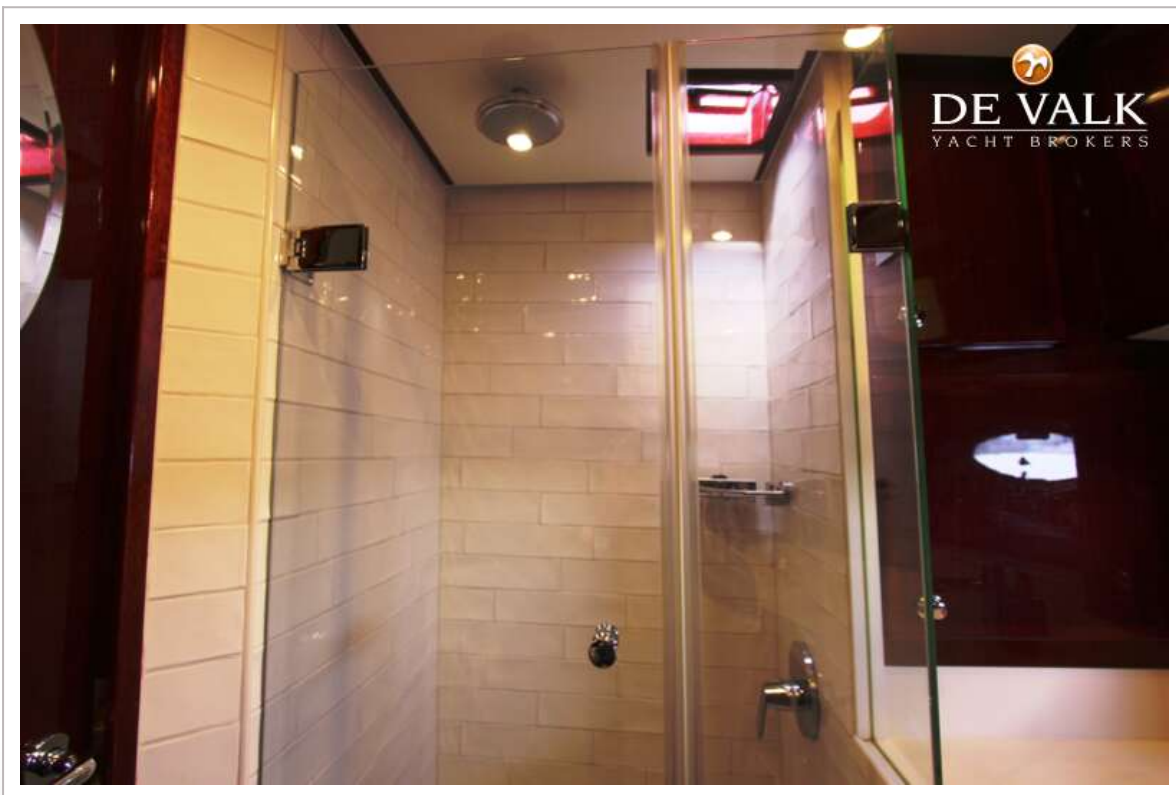


# VIVANTE 48 PH









# VIVANTE 48 PH



# VIVANTE 48 PH

