



## OCEAN MARINE TRAWLER 44

# OCEAN MARINE TRAWLER 44

## BROKER'S COMMENTS

Ocean Marine Trawler, built in 1978 by Ocean Marine. Sturdy trawler with great seagoing capacities. Accommodation for up to six people in two cabins. Perfect ship for longer trips or living aboard. She will be auctioned on 15 July in cooperation with Schipveiling and BVA Auctions. For further details go to:

<http://bit.ly/Ocean44> Starting price of the auction EUR. 25.000, offers can be made on the website of BVA.

*Mark Hesselmans*

## SPECIFICATIONS

<b>Dimensions</b>	13.50 x 4.20 x 1,00 / 1.20 (m)	<b>Builder</b>	Ocean Marine
<b>Built</b>	1978	<b>Cabins</b>	2
<b>Material</b>	GRP	<b>Berths</b>	6
<b>Engine(s)</b>	2 x Ford Lewmans diesel	<b>Hp/Kw</b>	2 x 120.00 (hp), 88.20 (kw)
<b>Asking price</b>	sold (VAT )	<b>Lying</b>	at sales office

## CONTACT

<b>Sales office</b>	De Valk Loosdrecht B.V.	<b>Telephone</b>	+31 (0)35 582 90 30
<b>Address</b>	't Breukeleveense Meentje 6 1231LM Loosdrecht / Wijdmeren NL	<b>E-mail</b>	loosdrecht@devalk.nl

## DISCLAIMER

These particulars are given in good faith as supplied but cannot be guaranteed.



# OCEAN MARINE TRAWLER 44

## GENERAL

Model	OCEAN MARINE TRAWLER 44
Type	motor yacht
LOA (m)	13,50
Beam (m)	4,20
Draft (m)	1,20
Draft min (m)	1,00
Air draft (m)	4,65
Headroom (m)	2,00
Year built	1978
Builder	Ocean Marine
Country	Taiwan
Displacement (t)	19
Gross tonnage	16.5
Net tonnage	19
CE norm	NA
Hull material	GRP
Hull colour	white
Hull shape	hard chine
Keel type	long keel
Superstructure material	wood epoxy
Rubbing strake	wood
Deck material	wood epoxy
Deck finish	non-skid paint
Superstructure deck finish	teak
Cockpit deck finish	non-skid paint
Antifouling (year)	2020
Window frame	wood Some off them are leaking
Window material	glass
Deckhatch	Some off them are leaking
Portholes	brass Some off them are leaking, spare parts are in the boat



# OCEAN MARINE TRAWLER 44

Flybridge	The flybridge is leaking on some places
Flybridge cover	yes
Mast can be lowered	manual
Steadying sail with mast	Brown Sail
Fuel tank (litre)	1000
Level indicator (fuel tank)	Electrical defect
Freshwater tank (litre)	1000
Wheel steering	hydraulic
Inside helm position	yes
Flybridge helm position	

## ACCOMMODATION

Cabins	2
Berths	6
Interior	teak
Layout	yes
Floor	parquet
Saloon	yes
Headroom saloon (m)	2+/-
Heating	central heating Needs maintenance
Aft Cabin	yes
Dinette to convert into berth	yes
Sliding door to cockpit	yes
Opening door to aft deck	yes
Galley	yes
Countertop	plastic
Sink	stainless steel
Cooker	calor gas
Oven	yes
Fridge	2020
Freezer	In fridge



# OCEAN MARINE TRAWLER 44

Hot water system	geyser on Calor Gas
Water pressure system	electrical
Owners cabin	double bed
Wardrobe	hanging/drawers/shelves
Bathroom	en suite
Toilet	en suite
Toilet system	electric
Shower	en suite
Bath tub	
Guest cabin 1	double bed
Bed length (m)	1.90
Wardrobe	hanging and drawers
Bathroom	shared
Toilet	shared
Toilet system	electric
Shower	shared

## MACHINERY

No of engines	2
Make	Ford Lewmans
HP	120
kW	88,20
Fuel	diesel
Maximum speed (kn)	11
Cruising speed (kn)	6,5
Consumption (l/hr)	6
Engine hours	4100
Engine cooling system	freshwater heat exchanger
Drive	shaft
Engine controls	bowden cable
Gearbox	hydraulic



# OCEAN MARINE TRAWLER 44

Exhaust	watercooled
Propeller type	fixed
Propeller shaft material	Copper
Electric bilge pump	yes
Generator	wet exhaust Farymann NR0123-18W430 (large maintenance 2020)
Batteries	yes
Start battery	4X
Service battery	11X AGM 80ah 2020
Generator battery	1X
Battery charger	Mastervolt
Inverter	Mastervolt
Diode battery combiners	yes
Shorepower	with cable

## NAVIGATION

Compass	yes
Compass on flybridge	Electrical defect
Depth sounder	yes
VHF	Electrical defect
Autopilot	Electrical defect on the flybridge
Rudder angle indicator	yes
Searchlight	yes

## EQUIPMENT

Fixed windscreen	yes
Cockpit cushions	yes
Cockpit table	yes
Cockpit chairs	yes
Bathing platform	yes
Anchor	



# OCEAN MARINE TRAWLER 44

Anchor chain	50m+/-
Anchor 2	2 extra anchors onboard
Windlass	electrical Vetus
Deck wash	yes
Davits	stainless steel
Davits controls	electrical
Sea railing	teak
Grab rail (superstructure)	wood
Railing side opening gates	yes
Wiper	yes
Horn	electric



# OCEAN MARINE TRAWLER 44



# OCEAN MARINE TRAWLER 44



# OCEAN MARINE TRAWLER 44



# OCEAN MARINE TRAWLER 44



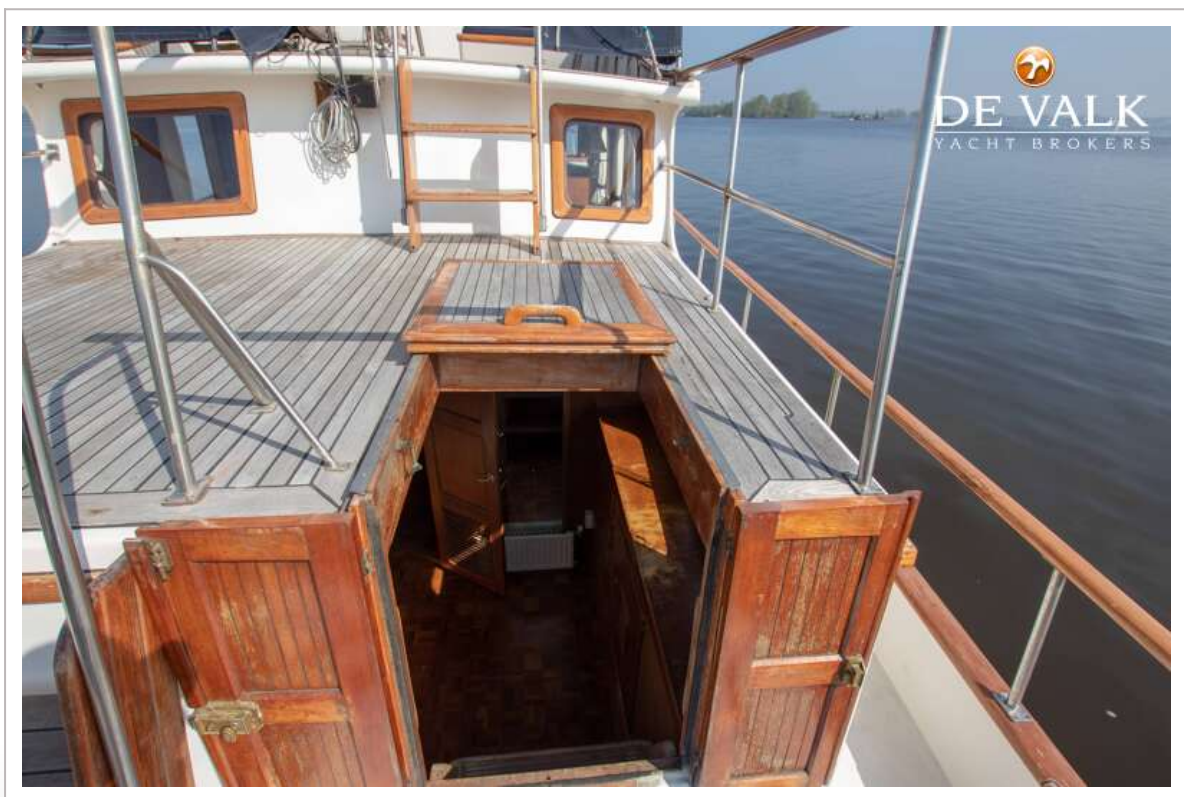
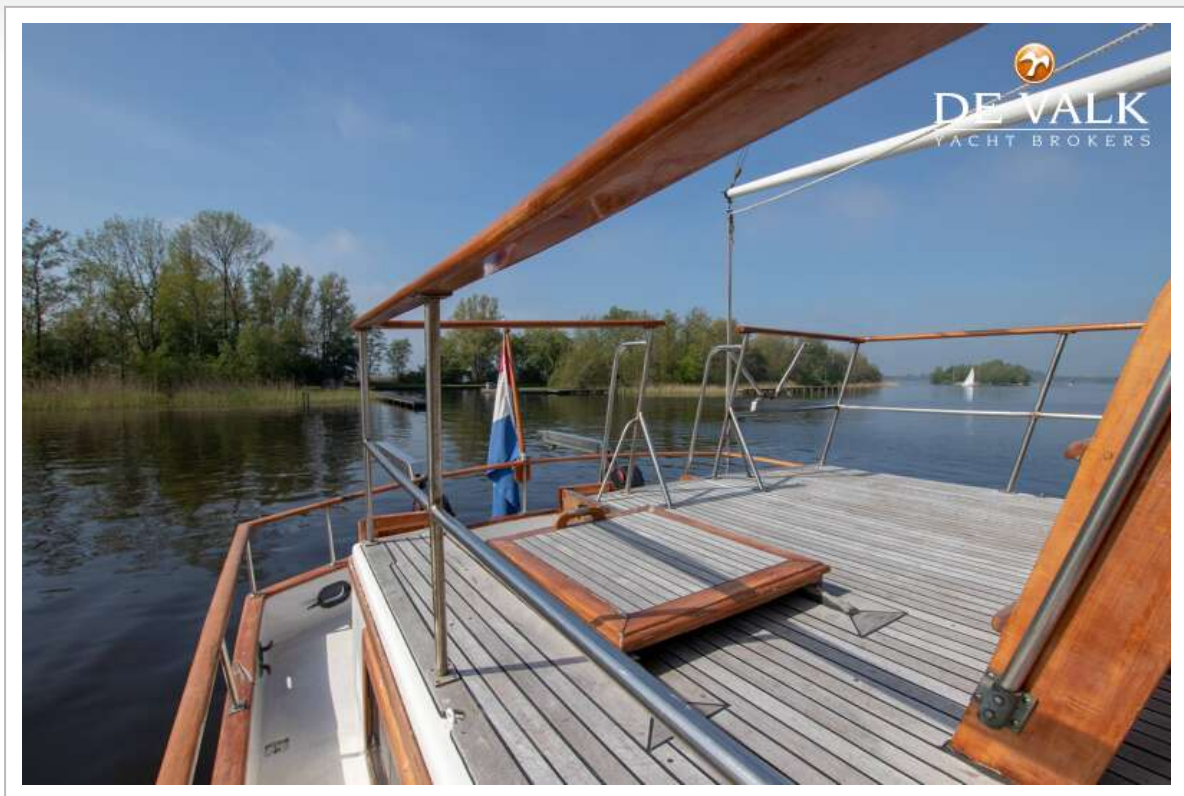
# OCEAN MARINE TRAWLER 44



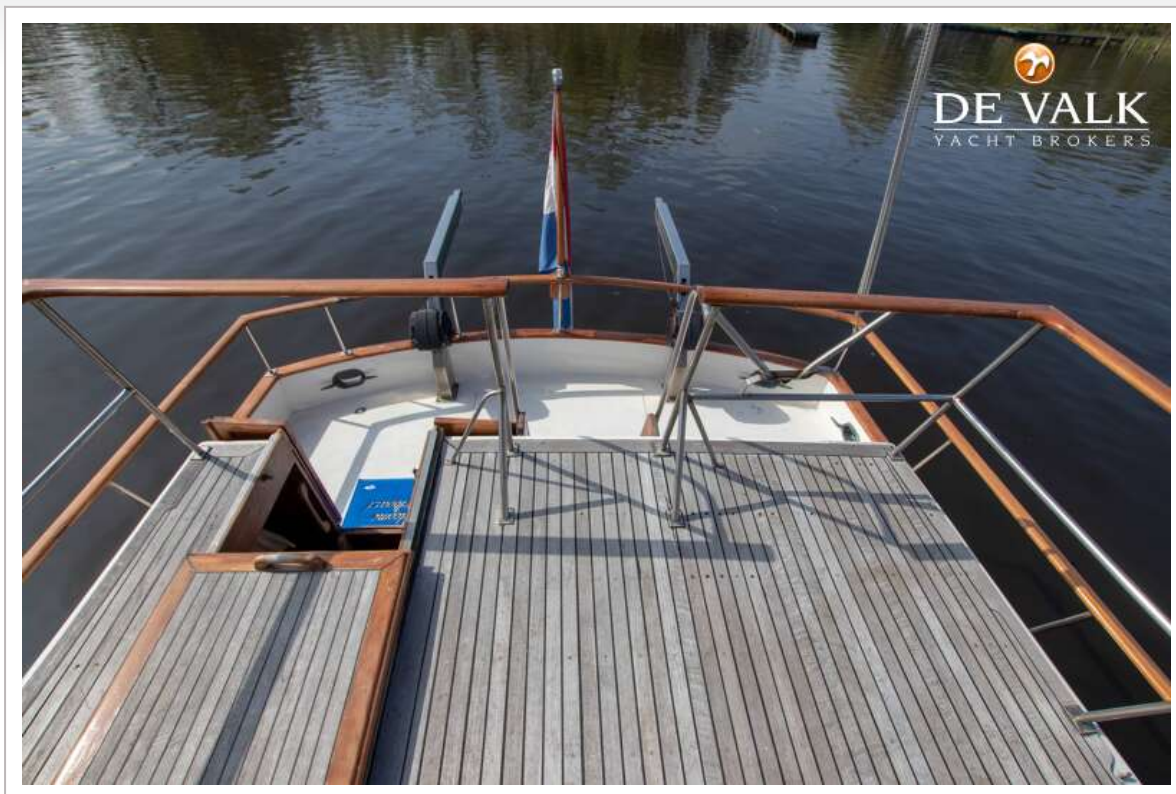
# OCEAN MARINE TRAWLER 44



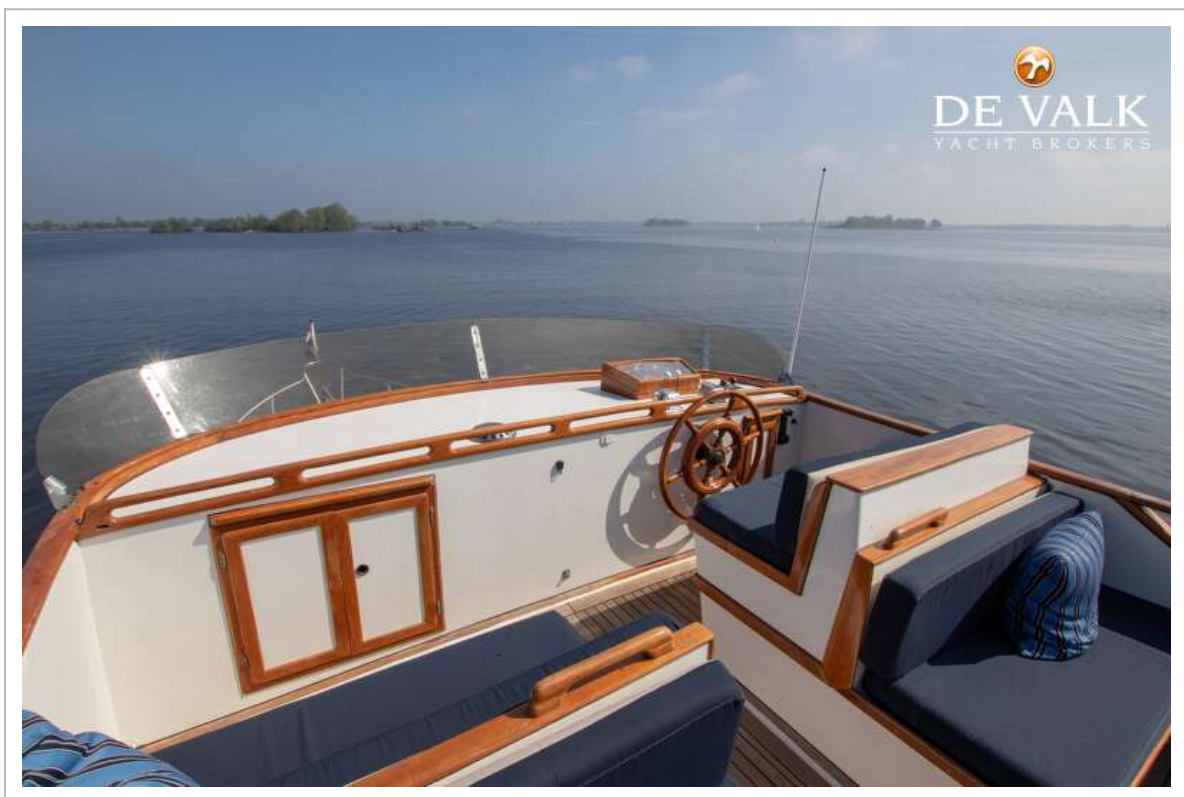
# OCEAN MARINE TRAWLER 44



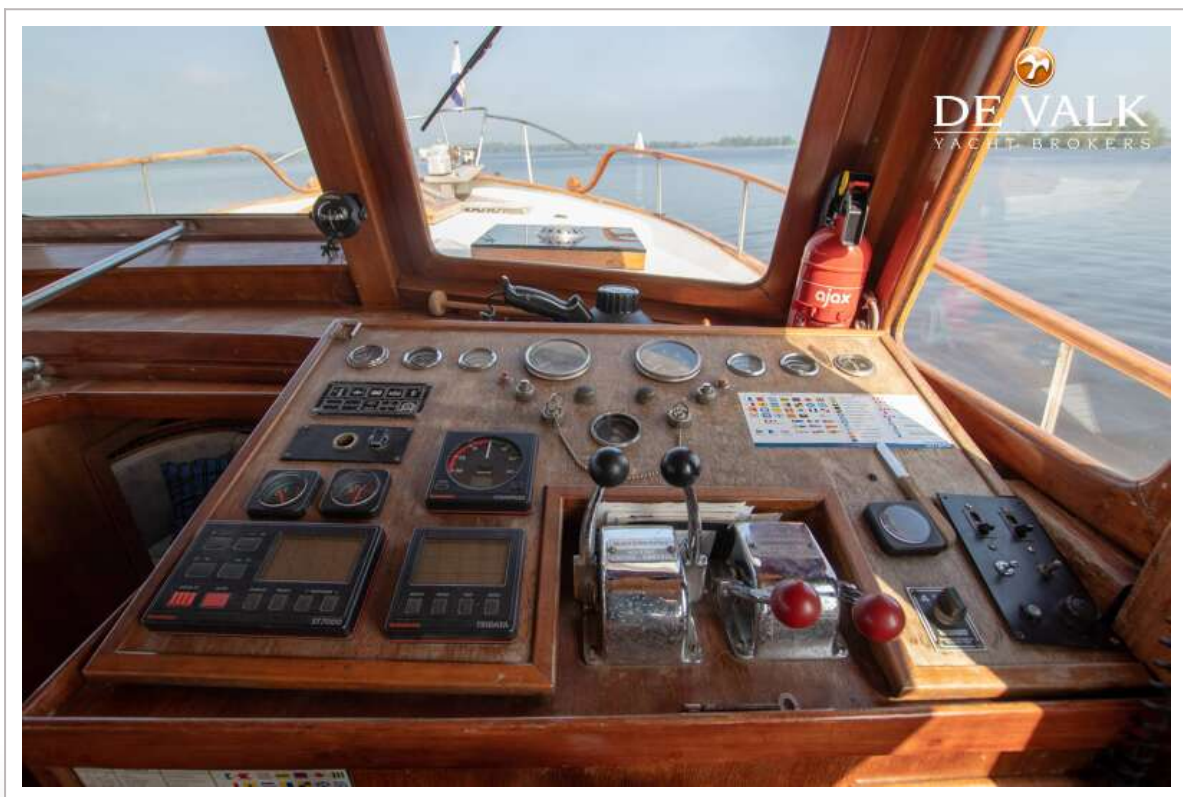
# OCEAN MARINE TRAWLER 44



# OCEAN MARINE TRAWLER 44



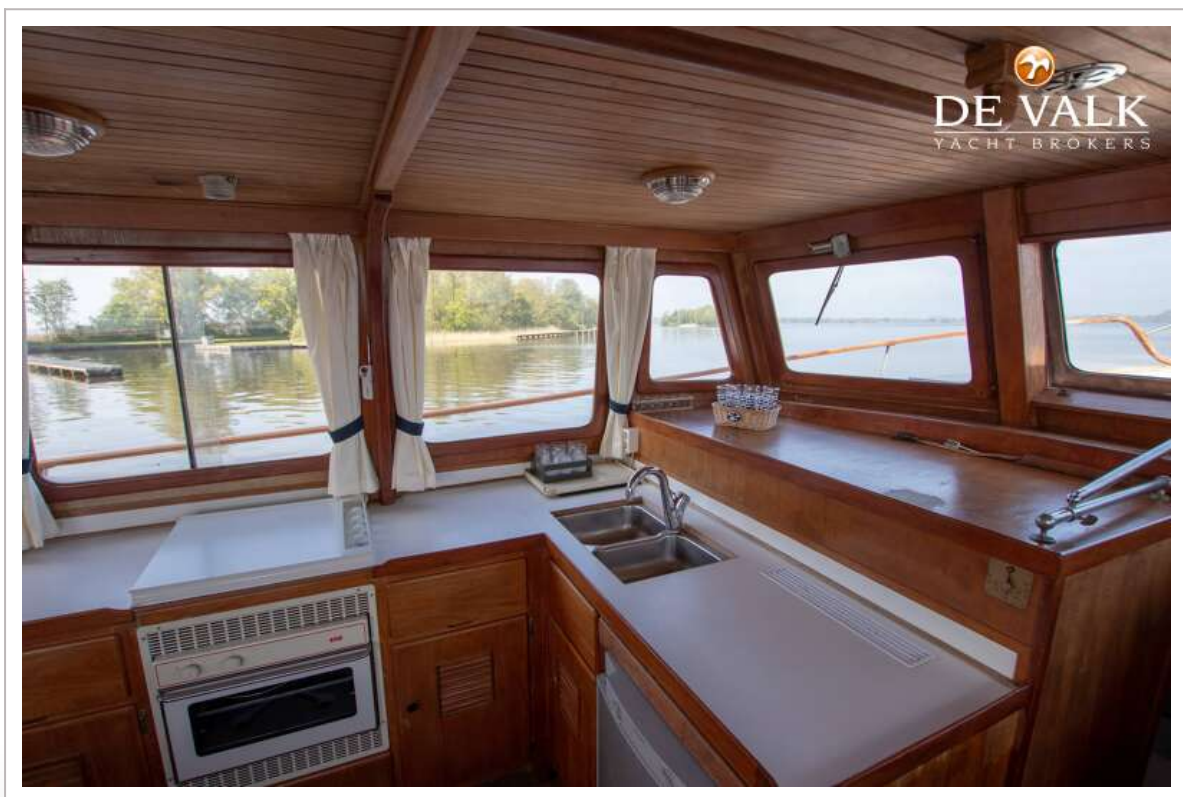
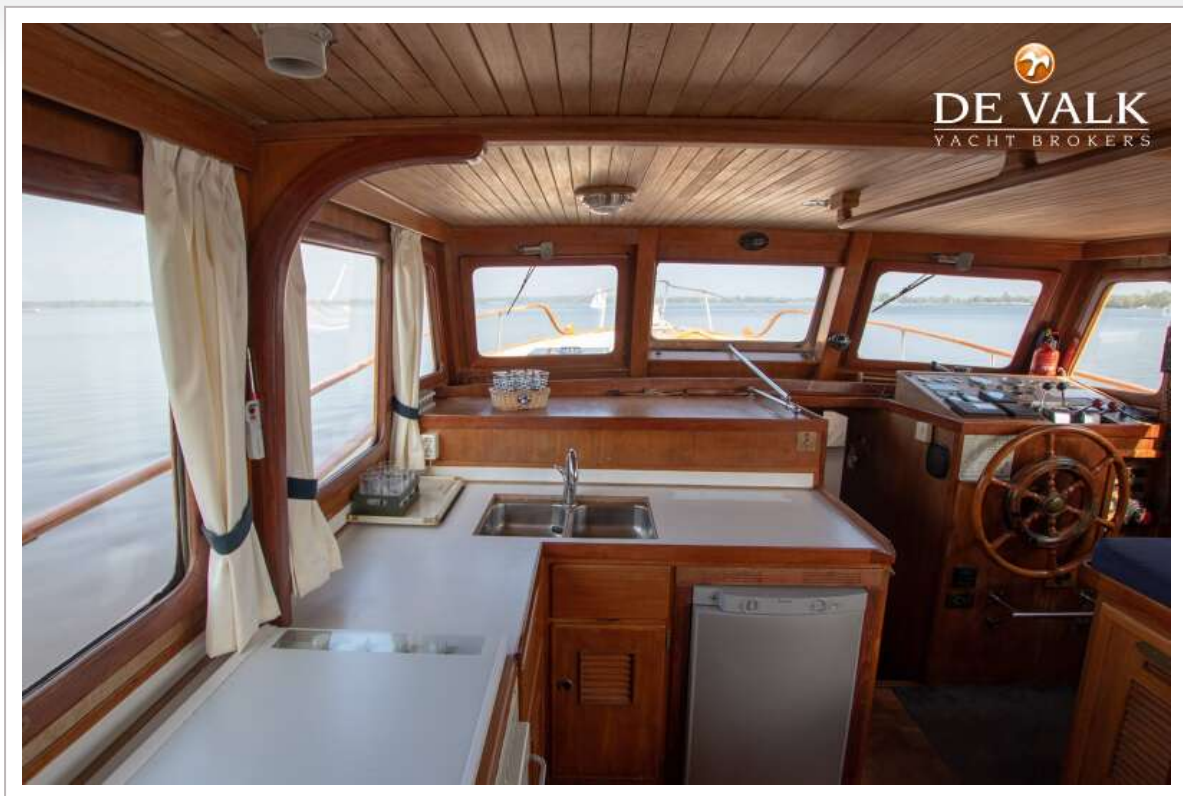
# OCEAN MARINE TRAWLER 44



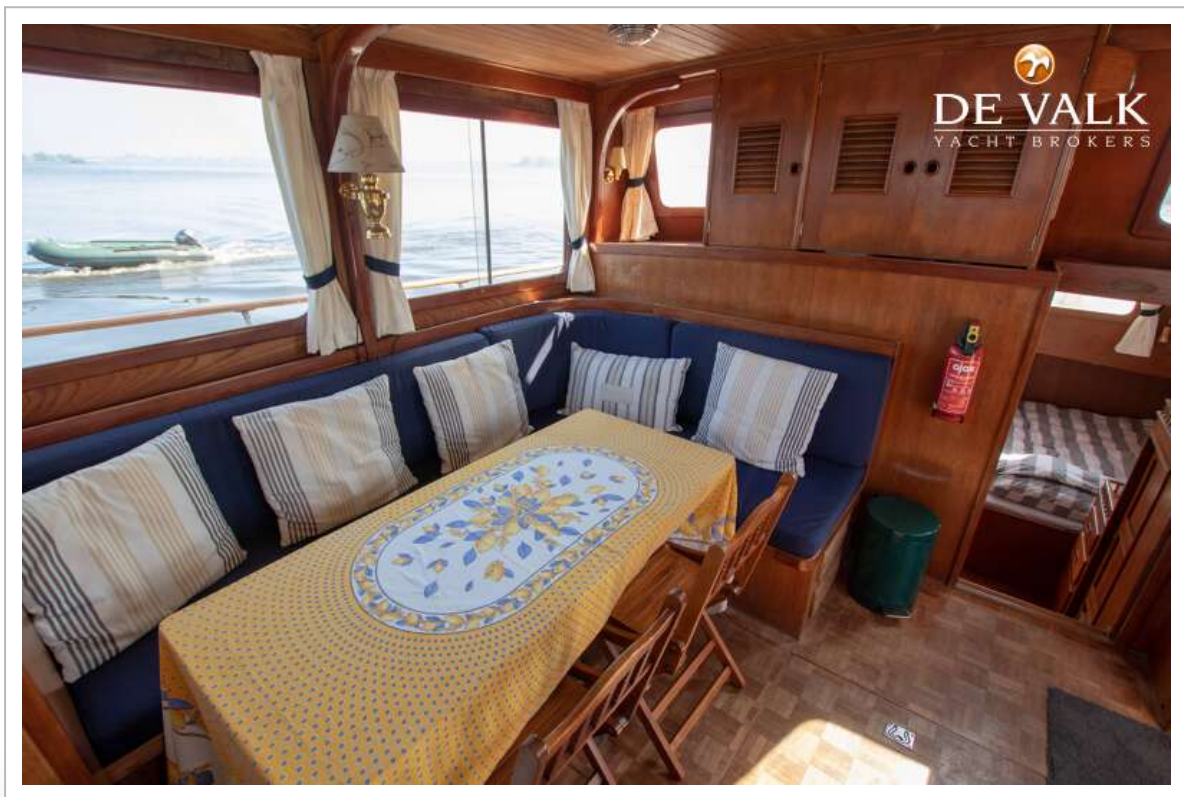
# OCEAN MARINE TRAWLER 44



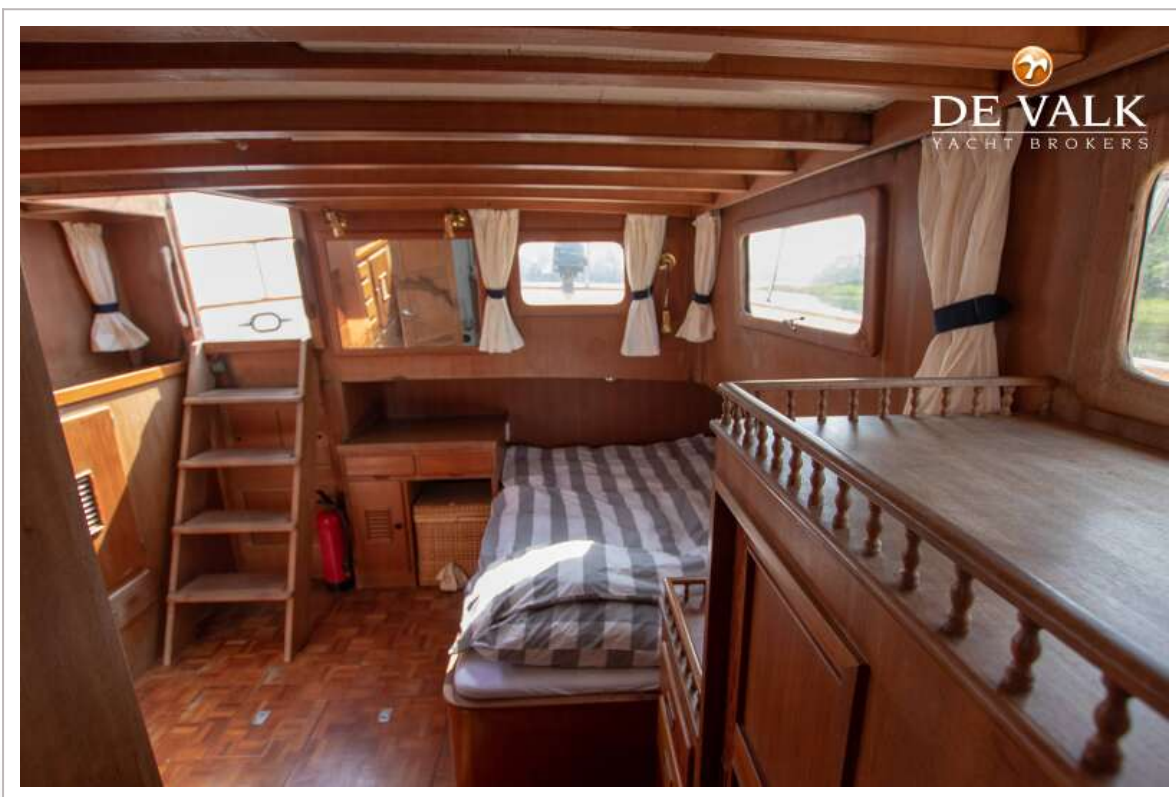
# OCEAN MARINE TRAWLER 44



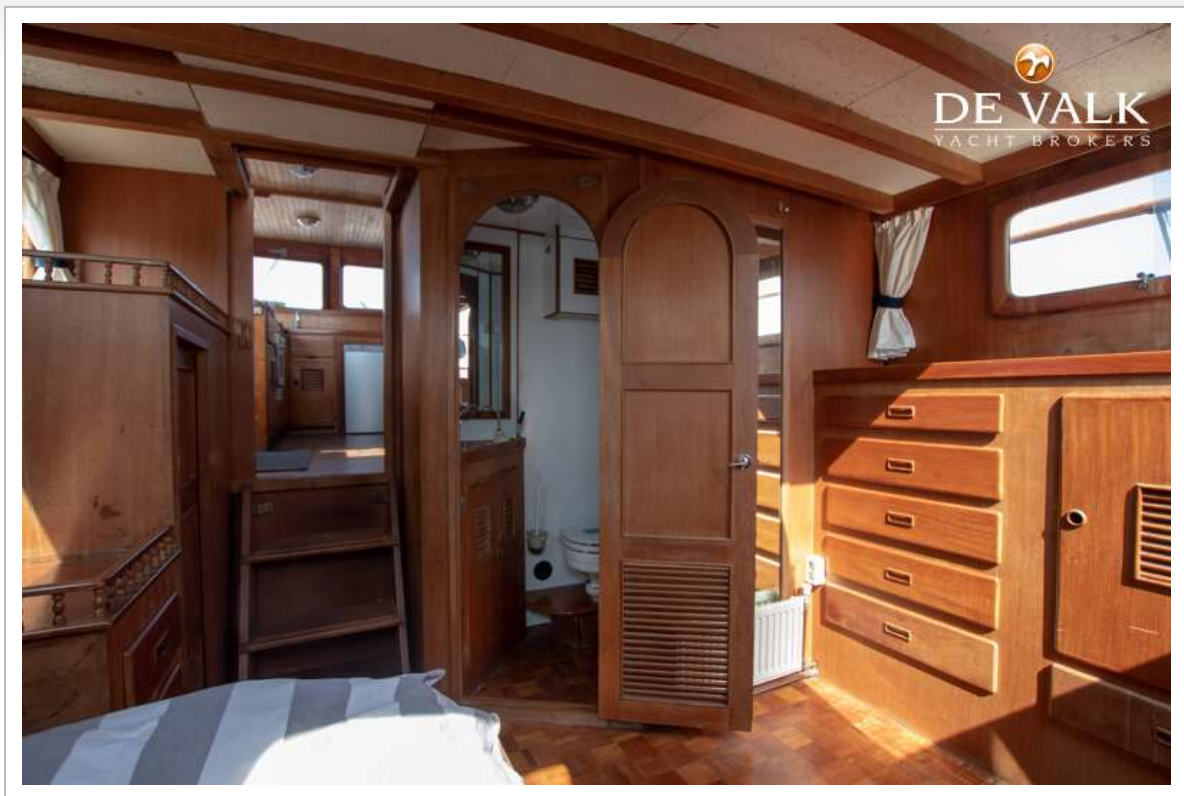
# OCEAN MARINE TRAWLER 44



# OCEAN MARINE TRAWLER 44



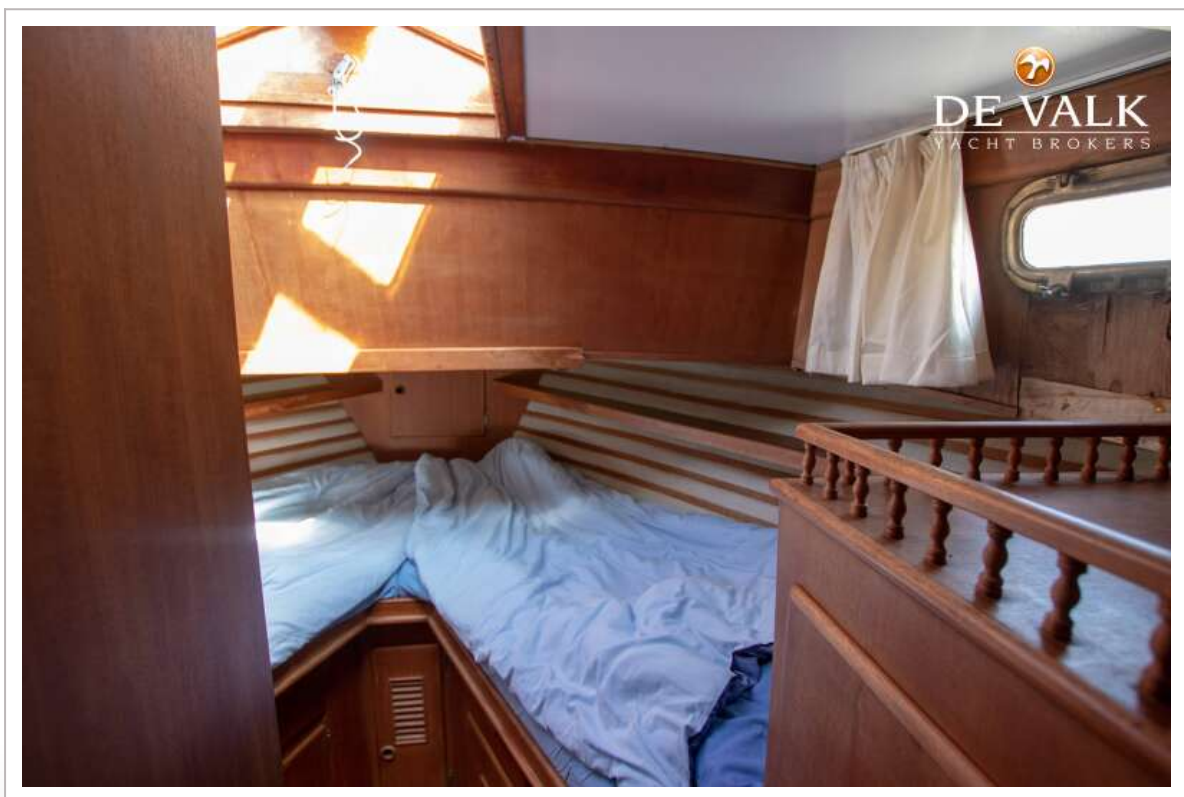
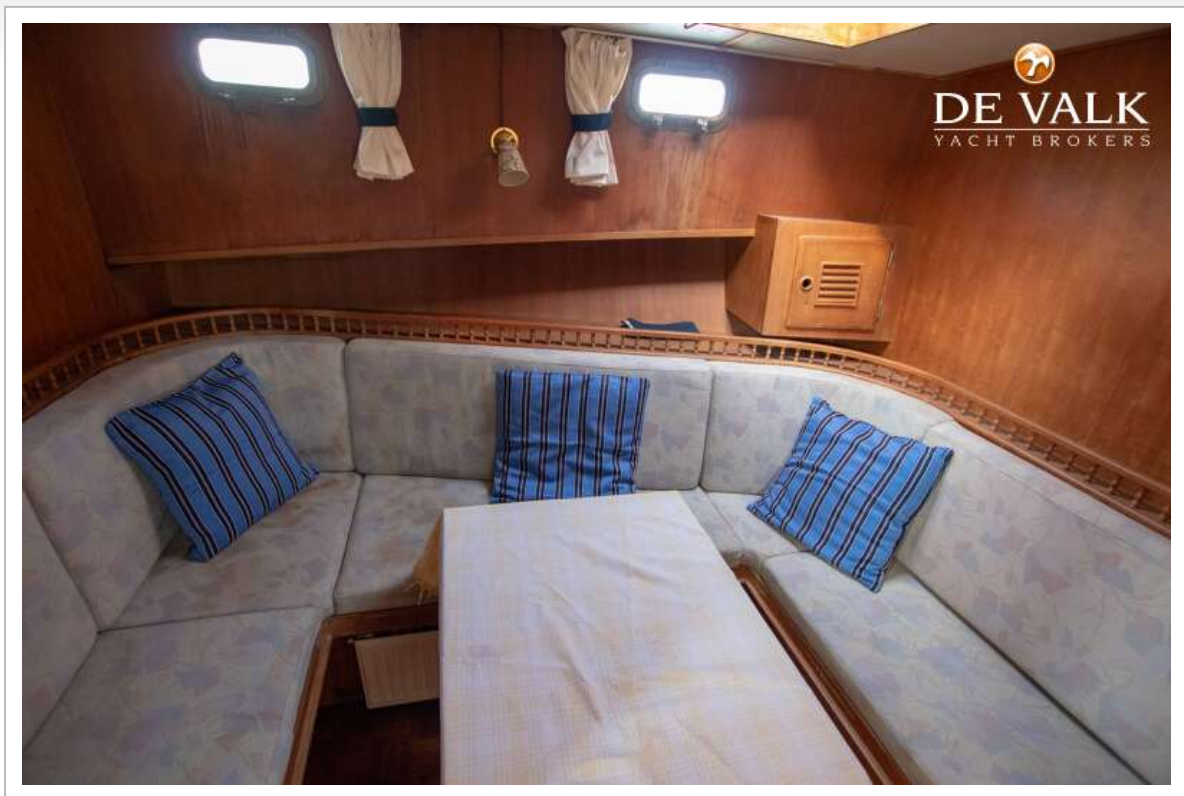
# OCEAN MARINE TRAWLER 44



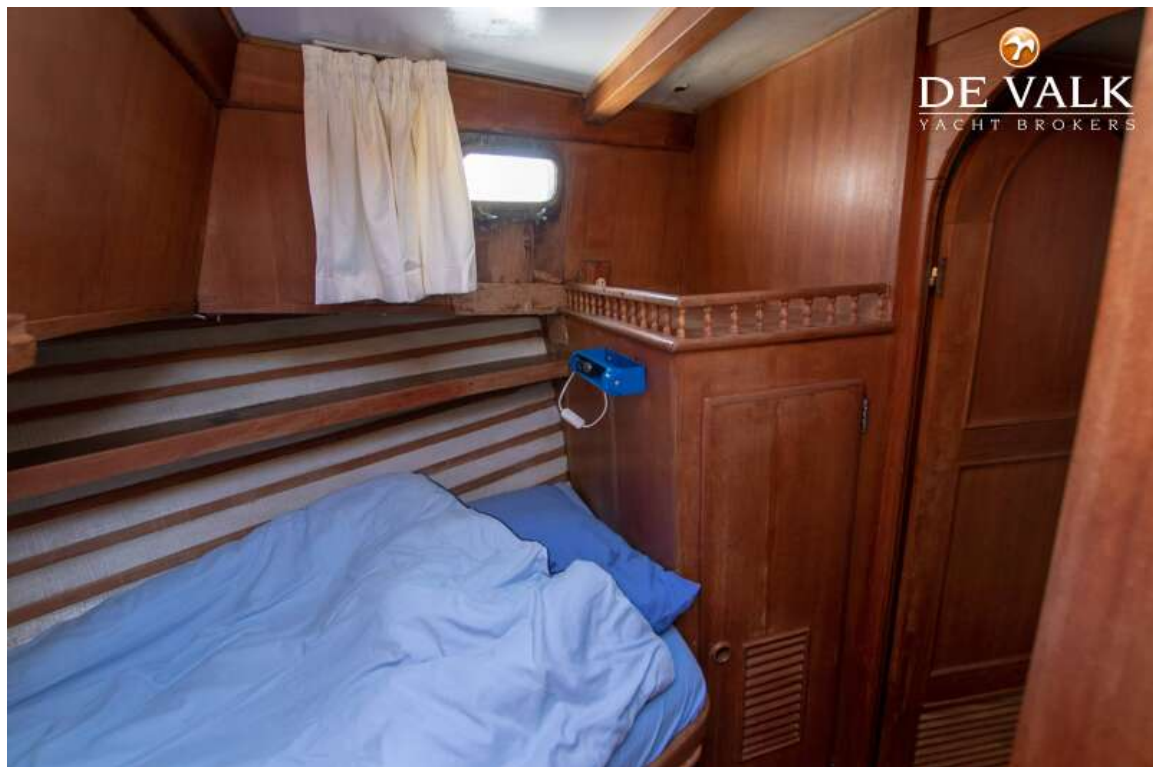
# OCEAN MARINE TRAWLER 44



# OCEAN MARINE TRAWLER 44



# OCEAN MARINE TRAWLER 44



# OCEAN MARINE TRAWLER 44



# OCEAN MARINE TRAWLER 44

