



SK KOTTER 1300

SK KOTTER 1300

BROKER'S COMMENTS

The SK Kotter 1300 OK "D' Harder" built at the J. de Jong shipyard in Sneek in 2001. This SK Kotter is equipped with a Perkins - Sabre 130 hp, bow and sternthruster, double glazing, solar panels and generator. Has a French bed in the owner's cabin and is suitable for 4/5 people to spend the night. This SK has a large sailing range due to its low height from the waterline 2,50 mtr. If you have become curious, you can view this SK 1300 in our covered sales marina in Sneek.

Peter Spruyt

SPECIFICATIONS

Dimensions	13.30 x 4.43 x 1.10 (m)	Builder	SK jachtbouw Sneek
Built	2001	Cabins	1
Material	Steel	Berths	4
Engine(s)	1 x Perkins- Sabre M135 diesel	Hp/Kw	130.00 (hp), 95.55 (kw)
Asking price	sold (VAT)	Lying	at sales office

CONTACT

Sales office	De Valk Sneek	Telephone	+31 (0)515 42 80 30
Address	Zwolsmanweg 7 8606 KC Sneek NL	E-mail	sneek@devalk.nl

DISCLAIMER

These particulars are given in good faith as supplied but cannot be guaranteed.



GENERAL

Model	SK KOTTER 1300
Type	motor yacht
LOA (m)	13,30
Beam (m)	4,43
Draft (m)	1,10
Air draft (m)	2,50
Headroom (m)	2,00
Year built	2001
Builder	SK jachtbouw Sneek
Country	The Netherlands
Designer	J. de Jong
Displacement (t)	17
CE norm	C
Hull material	steel
Hull colour	black
Hull shape	multi hard chine
Keel type	box keel
Superstructure material	steel
Rubbing strake	rubber
Deck material	steel
Deck finish	non-skid paint
Superstructure deck finish	paint
Cockpit deck finish	paint
Window frame	aluminium
Window material	double glazing
Deckhatch	2 x
Portholes	aluminium
Insulation	rockwool
Mast can be lowered	electric
Fuel tank (litre)	steel 1000 ltr



Level indicator (fuel tank)	yes
Freshwater tank (litre)	stainless steel 500 ltr
Level indicator (freshwater)	yes
Blackwater tank (litre)	epoxy 250 ltr
Level indicator (blackwater)	yes
Wheel steering	hydraulic
Outside helm position	electric Remote control
Tiller	yes
Emergency tiller	yes

ACCOMMODATION

Cabins	1
Berths	4
Interior	teak
Floor	teak and holly
Saloon	yes
Headroom saloon (m)	2,00 mtr
Heating	diesel ducted hot air Eberspracher
Dinette to convert into berth	yes
Opening door to cockpit	yes
Galley	yes
Countertop	plastic
Sink	stainless steel
Cooker	calor gas 3 x Smev
Oven	Moulinex
Microwave/oven combi	yes
Fridge	Waeco CR 110 ltr
Freezer	yes
Hot water system	220V + engine Sigmar type B
Water pressure system	electrical
Coffee maker	Techni Vorm DE



Owners cabin	French bed
Bed length (m)	2,00 x 1,70 mtr
Wardrobe	hanging and shelves
Bathroom	separate
Toilet	separate
Toilet system	electric Jabsco
Wash basin	in the bathroom
Shower	separate

MACHINERY

No of engines	1
Make	Perkins- Sabre
Type	M135
HP	130
kW	95,55
Fuel	diesel
Year installed	2001
Engine hours	Ca 1000
Engine cooling system	closed keelcooling
Drive	shaft
Engine controls	bowden cable ZF Marine
Gearbox	hydraulic
Bowthruster	electric Cramm Twinprop CB 500/700
Sternthruster	electric Vetus Bow 9524 95 KGF
Propeller type	fixed
Propeller shaft material	stainless steel
Shaft lubrication	grease Automatic
Manual bilge pump	yes
Electric bilge pump	yes
Electrical installation	12/ 24/ 220 volt
Generator	wet exhaust Mastervolt Whisper 3,5 Kw



Start battery	2 x 140 Amp Calcium
Service battery	4 x 200 Amp AGM
Generator battery	1 x 90 Amp Calcium
Bowthruster battery	2 x 120 Amp Calcium
Sternthruster battery	2 x 120 Amp Calcium
Battery charger	Mastervolt 24/75
Inverter	Mastervolt 24/2500
Solar panel	2 x Fox- 250/ E
Diode battery combiners	yes
Shorepower	with cable

NAVIGATION

Depth sounder	VDO
VHF	Shipmate RS 8300
Autopilot	VDO
Rudder angle indicator	VDO
Navigation lights	yes

EQUIPMENT

Cockpit cover	yes
Cockpit cushions	yes
Cockpit table	yes
Cockpit chairs	yes
Boarding ladder	stainless steel
Bow ladder	yes
Deck shower	yes
Anchor	Pool
Anchor chain	30 mtr
Windlass	manual
Sea railing	stainless steel
Wiper	2 x



Horn	electric
Fenders	yes
Mooring lines	yes
TV	Philips
Radio-cd player	JVC
Cockpit speakers	yes
Speakers in salon	yes
Clock - barometer	yes
Fire extinguisher	yes
Extinguisher in engine room	yes



SK KOTTER 1300



SK KOTTER 1300



SK KOTTER 1300



SK KOTTER 1300



SK KOTTER 1300



SK KOTTER 1300



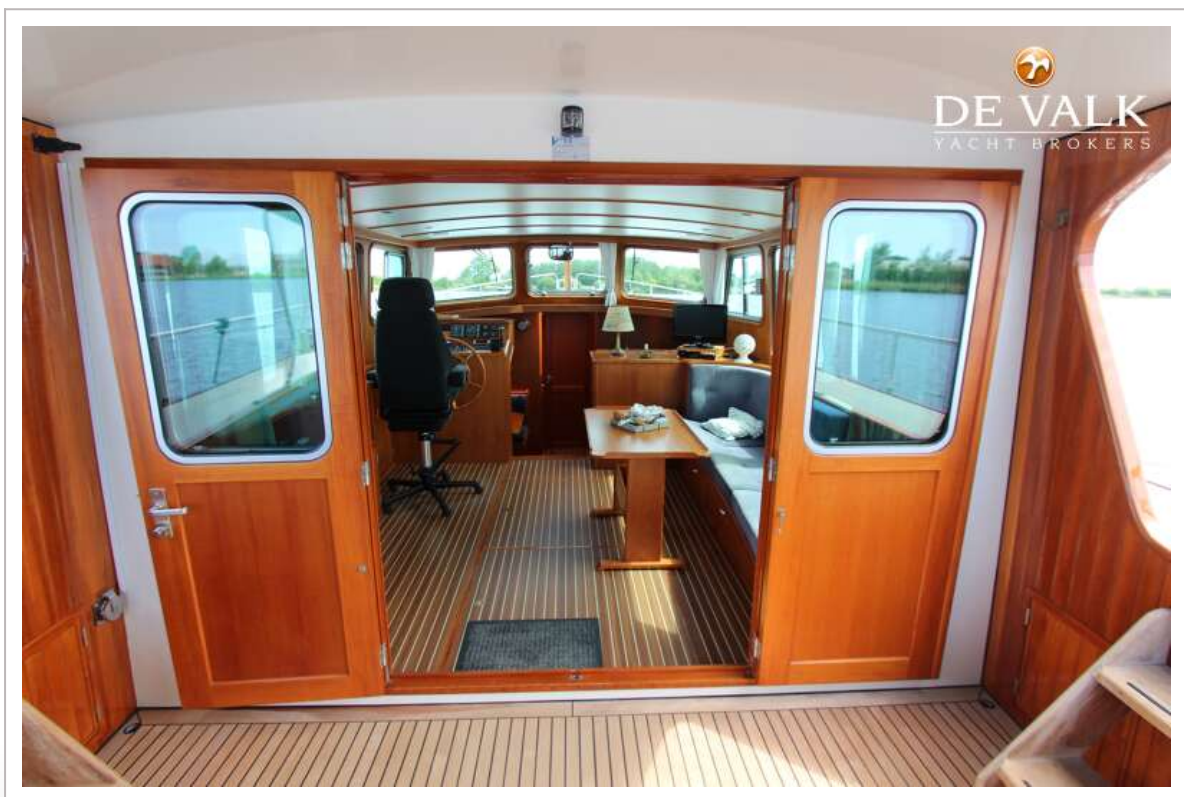
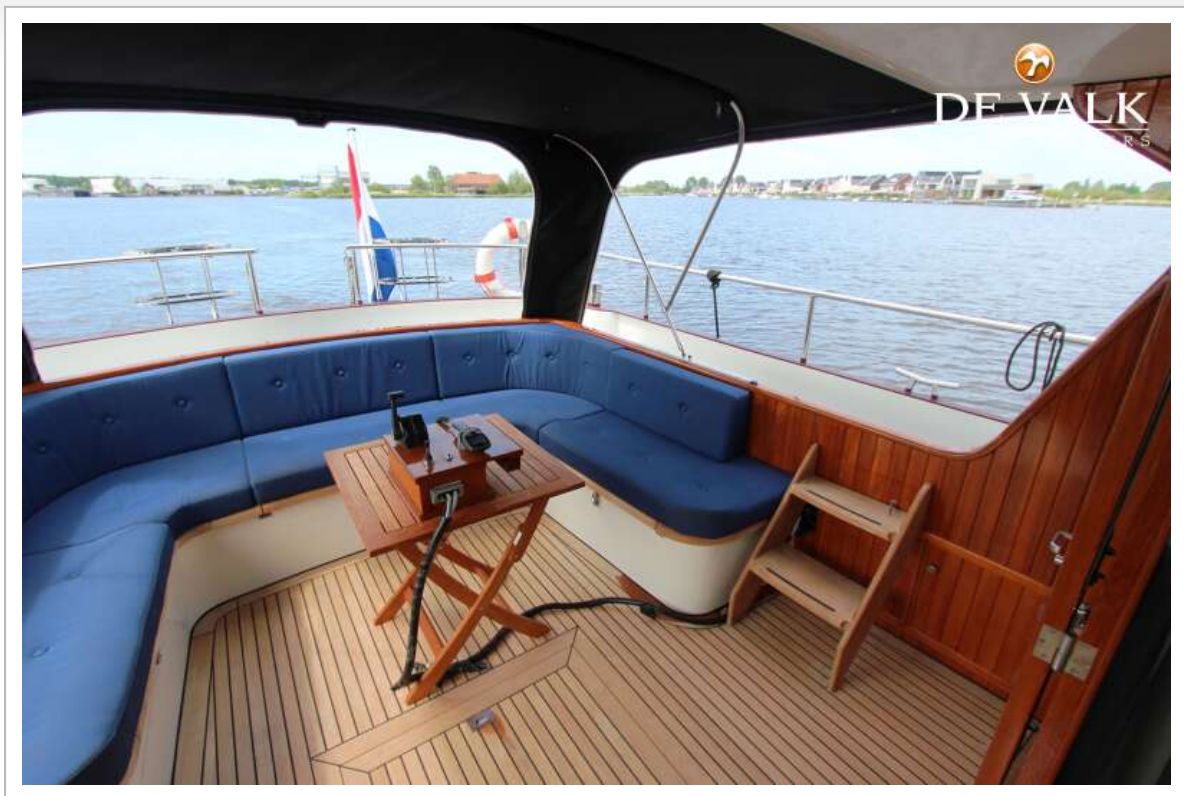
SK KOTTER 1300



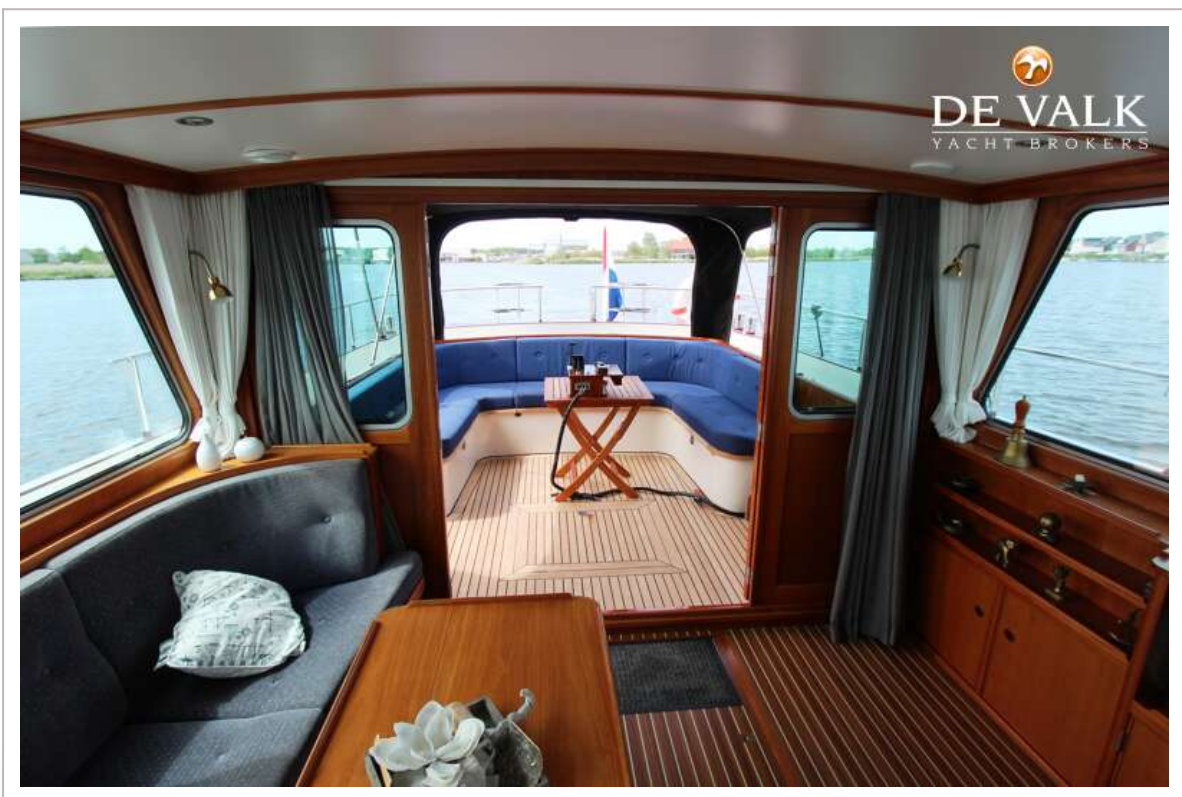
SK KOTTER 1300



SK KOTTER 1300



SK KOTTER 1300



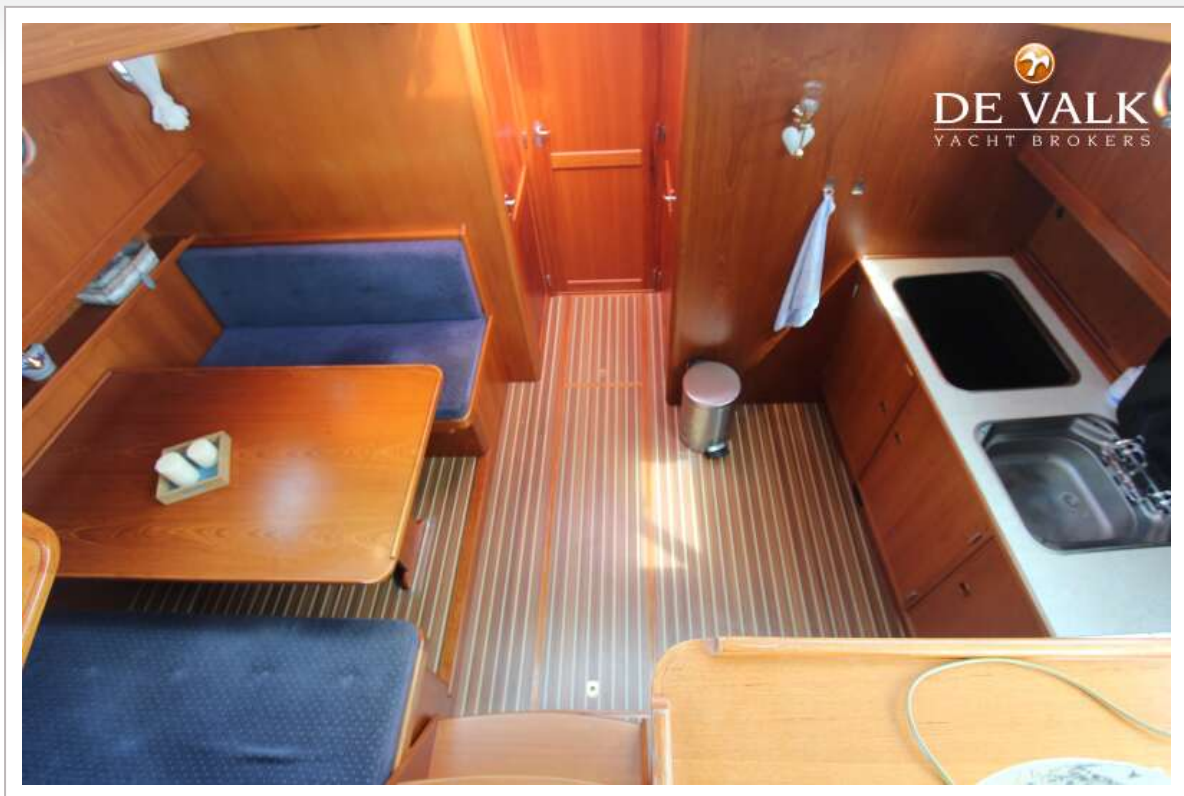
SK KOTTER 1300



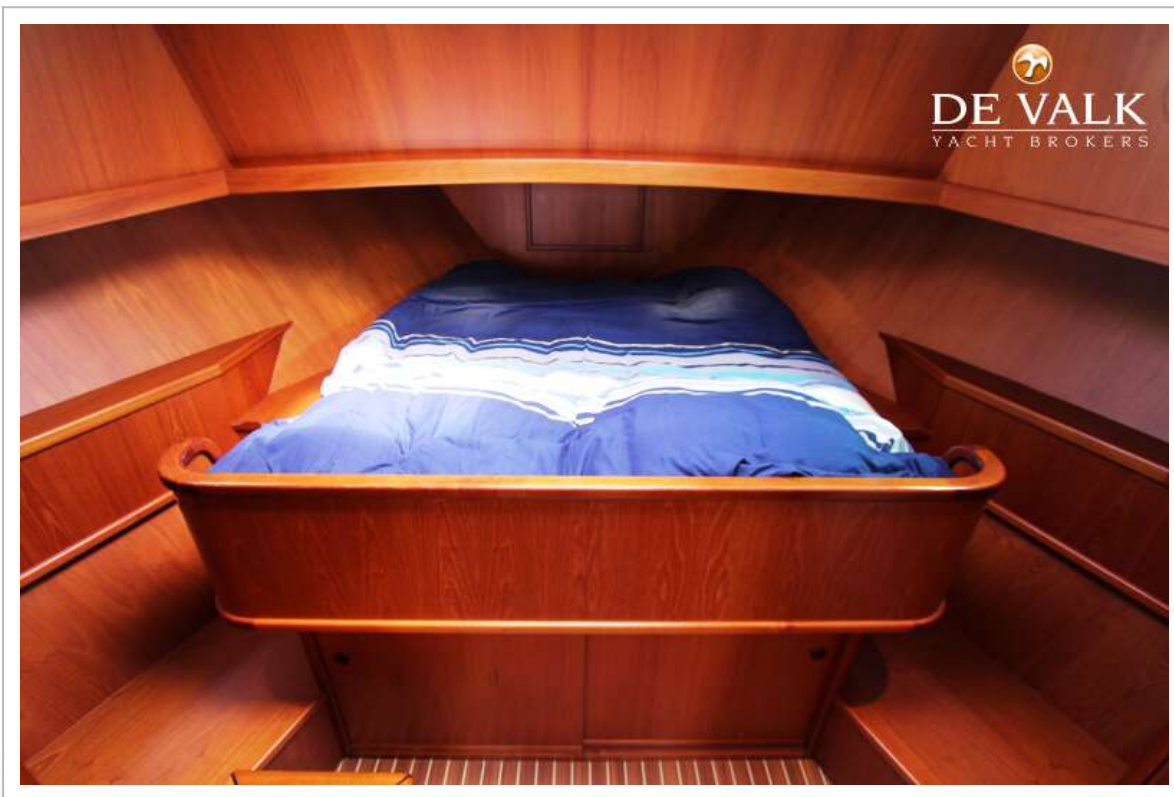
SK KOTTER 1300



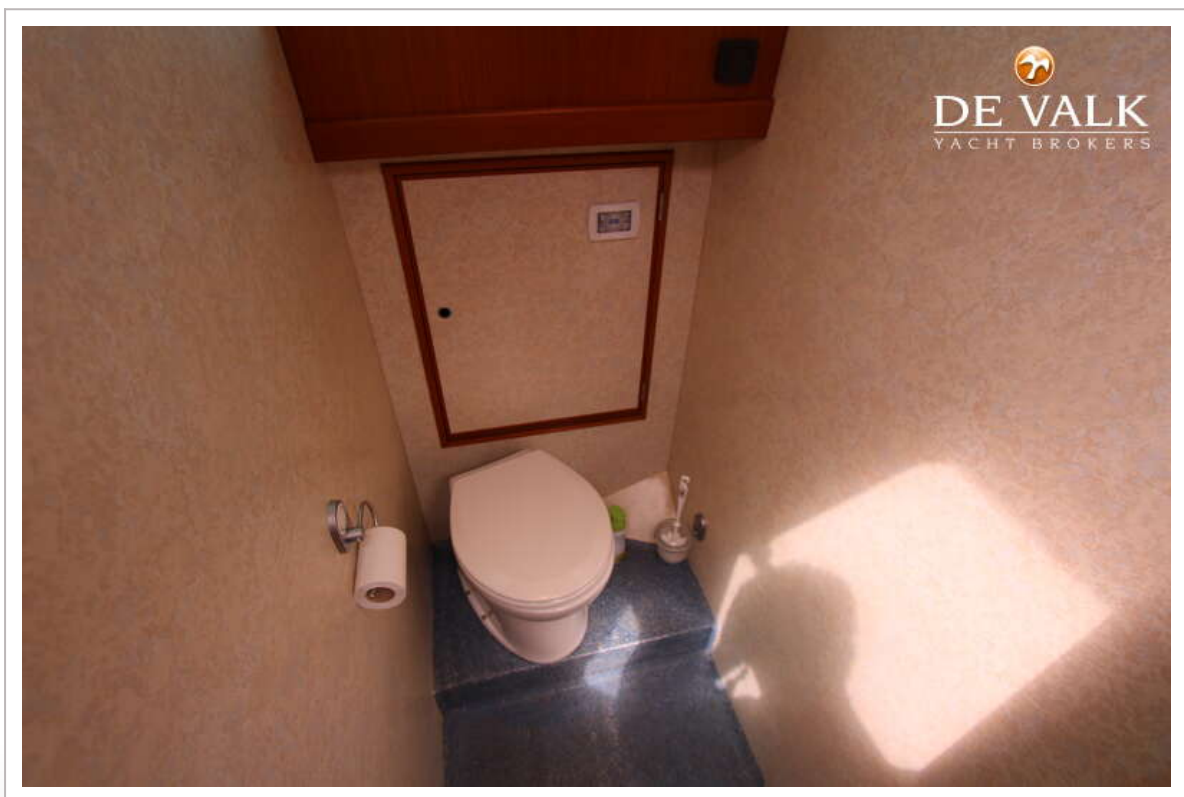
SK KOTTER 1300



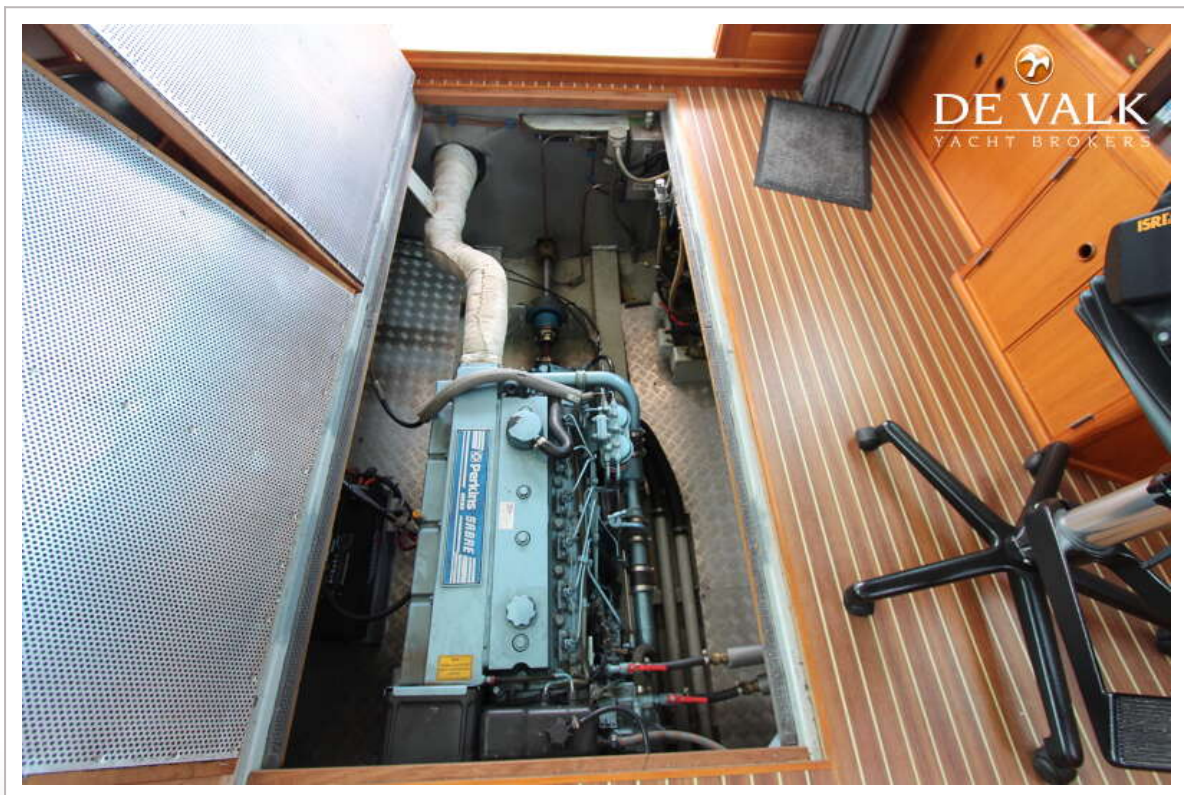
SK KOTTER 1300



SK KOTTER 1300



SK KOTTER 1300



SK KOTTER 1300

