



MALO 39 CLASSIC



MALO 39 CLASSIC

BROKER'S COMMENTS

This Malo 39 Classic is a rare opportunity - single owner from new, meticulously maintained, and presented in truly immaculate condition. Built to the highest standards by Malö Yachts in Sweden, she embodies Scandinavian craftsmanship and offshore capability. The interior shows minimal wear, and all systems have been regularly serviced and upgraded as needed. This yacht has been cherished and lightly used, making her one of the finest examples of the Malo 39 on the market today. Now ready to be admired and inspected in our salesharbor in Hindeloopen.

Johan Nooitgedagt

SPECIFICATIONS

Dimensions	12.65 x 3.76 x 1.83 (m)	Builder	Malo
Built	2004	Cabins	2
Material	GRP	Berths	6
Engine(s)	1 x Yanmar 4JH3BE diesel	Hp/Kw	56.00 (hp), 0.00 (kw)
Asking price	sold (VAT)	Lying	contact Hindeloopen

CONTACT

Sales office	De Valk Hindeloopen B.V.	Telephone	+31 514 52 40 00
Address	Oosterstrand 1 8713 JS Hindeloopen NL	E-mail	hindeloopen@devalk.nl

DISCLAIMER

These particulars are given in good faith as supplied but cannot be guaranteed.



MALO 39 CLASSIC

GENERAL

Model	MALO 39 CLASSIC
Type	sailing yacht
LOA (m)	12,65
LWL (m)	9,80
Beam (m)	3,76
Draft (m)	1,83
Air draft (m)	17,00
Air draft min (m)	17,00
Headroom (m)	1,98
Year built	2004
Builder	Malo
Country	Sweden
Designer	Leif Ångemark
Displacement (t)	8,9
Ballast (tonnes)	lead in GRP 3,5
Gross tonnage	8,9
CE norm	A
Hull material	GRP
Hull colour	white
Hull shape	round-bilged
Keel type	fin keel
Superstructure material	GRP
Rubbing strake	stainless steel
Deck material	GRP
Deck finish	teak
Superstructure deck finish	teak
Cockpit deck finish	teak
Antifouling (year)	June 2025
Dorades	yes
Window frame	aluminium



MALO 39 CLASSIC

Window material	tempered glass
Deckhatch	2x Lewmar
Portholes	aluminium
Fuel tank (litre)	stainless steel 280
Level indicator (fuel tank)	yes
Freshwater tank (litre)	stainless steel 245
Level indicator (freshwater)	yes
Blackwater tank (litre)	stainless steel 50
Blackwater tank extraction	deck extraction + uw line
Wheel steering	mechanical Jefa
Emergency tiller	yes

ACCOMMODATION

Cabins	2
Berths	6
Interior	mahogany
Floor	teak and holly
Open cockpit	yes
Saloon	yes
Headroom saloon (m)	2,0
Heating	diesel ducted hot air Eberspacher D5L
Navigation center	yes
Chart table	yes
Aft Cabin	yes
Galley	yes
Countertop	corian
Sink	stainless steel
Cooker	calor gas Dometic 2 Burner
Oven	Dometic
Fridge	Isotherm
Freezer	In fridge



MALO 39 CLASSIC

Hot water system	220V + engine
Water pressure system	electrical
Owners cabin	v-bed Front
Bed length (m)	2.0 Neptune mattresses
Wardrobe	hanging and shelves
Bathroom	en suite
Toilet	yes
Toilet system	yes
Wash basin	in the bathroom
Shower	en suite
Guest cabin 1	double bed
Bed length (m)	2.0
Wardrobe	hanging and shelves
Bathroom	shared
Toilet	shared
Toilet system	manual
Wash basin	at the toilet
Shower	shared

MACHINERY

No of engines	1
Make	Yanmar
Type	4JH3BE
HP	56
Fuel	diesel
Year installed	2004
Maximum speed (kn)	7
Cruising speed (kn)	6
Consumption (l/hr)	3
Engine cooling system	freshwater heat exchanger
Drive	shaft



MALO 39 CLASSIC

Engine controls	mechanical
Gearbox	mechanical
Bowthruster	electric 8hp Side Power, needs to be serviced !
Propeller type	folding Flexofold
Propeller blades	3
Propeller shaft material	stainless steel
Shaft lubrication	water
Manual bilge pump	yes
Electrical installation	yes
Batteries	yes
Start battery	yes
Service battery	3x 115 Ah
Battery monitor	yes
Battery charger	Mastervolt
Diode battery combiners	yes
Shorepower	with cable

NAVIGATION

Compass	Olympic 315
Depth sounder	Raymarine ST60 Depth
Log	Raymarine ST60 speed
Windset	Raymarine ST60 wind
Repeater	Raymarine ST60 Graphic
VHF	Sailor C 4901
VHF handheld	Raymarine 101E needs service
Autopilot	Raymarine ST 6001
Rudder angle indicator	On autopilot
Plotter/GPS	Raymarine Hybridtouch outside
Radar/GPS/plotter	Raymarine SL70 Pathfinder inside

EQUIPMENT



MALO 39 CLASSIC

Fixed windscreen	yes
Sprayhood	yes
Cockpit cover	yes
Boarding ladder	stainless steel Removeable
Anchor	Bruce
Anchor chain	40m
Windlass	manual
Sea railing	wire
Grab rail (superstructure)	wood
Railing side opening gates	yes
Pushpit	yes
Pulpit	yes
Life raft	yes
Fenders	yes
Mooring lines	yes
Spare parts	yes
Tools	yes
Radio-cd player	Pioneer KEH 1032
Cockpit speakers	2x
Speakers in salon	4x
Clock - barometer	Wempe
Fire extinguisher	yes

RIGGING

Rigging	sloop
Standing rigging	wire
Brand mast	Seldén
Material mast	aluminium
Spreaders	2 Pair
Mainsail	yes
Fully battened mainsail	Vertical



MALO 39 CLASSIC

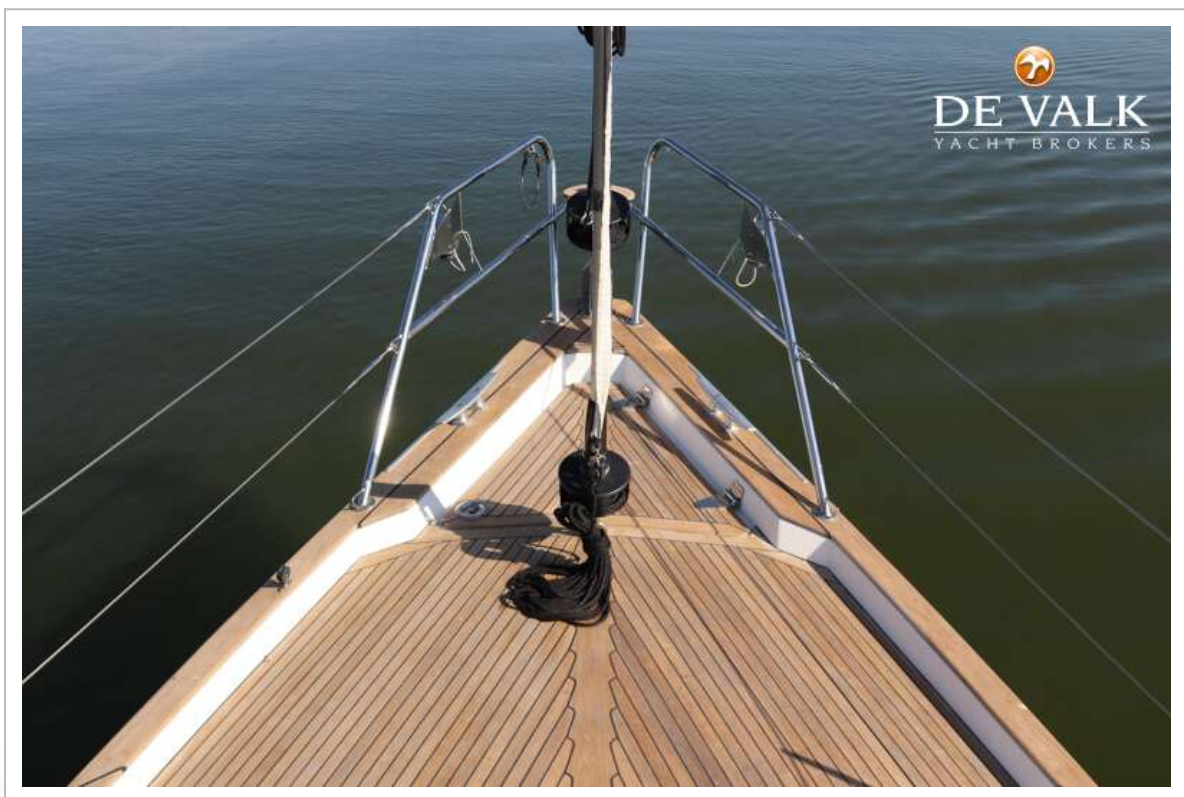
Stoway mast	yes
Cutterstay	yes
Genoa I	2017 De Vries Sails Cruising Offshore Performance 45m2
Genoa furler	Harken Mk 3
Cutter furler	Harken mk 3
Reefing System	main in-mast furling
Backstay adjuster	mechanical Selden
Boomvang	gasspring
Primary sheet winch	2x Andersen ST28
Genoa sheetwinches	2x Electric Andersen 52 STE
Multifunctional winches	2x Andersen ST28 on mast
Spi-pole	aluminium
Isolated backstay	yes



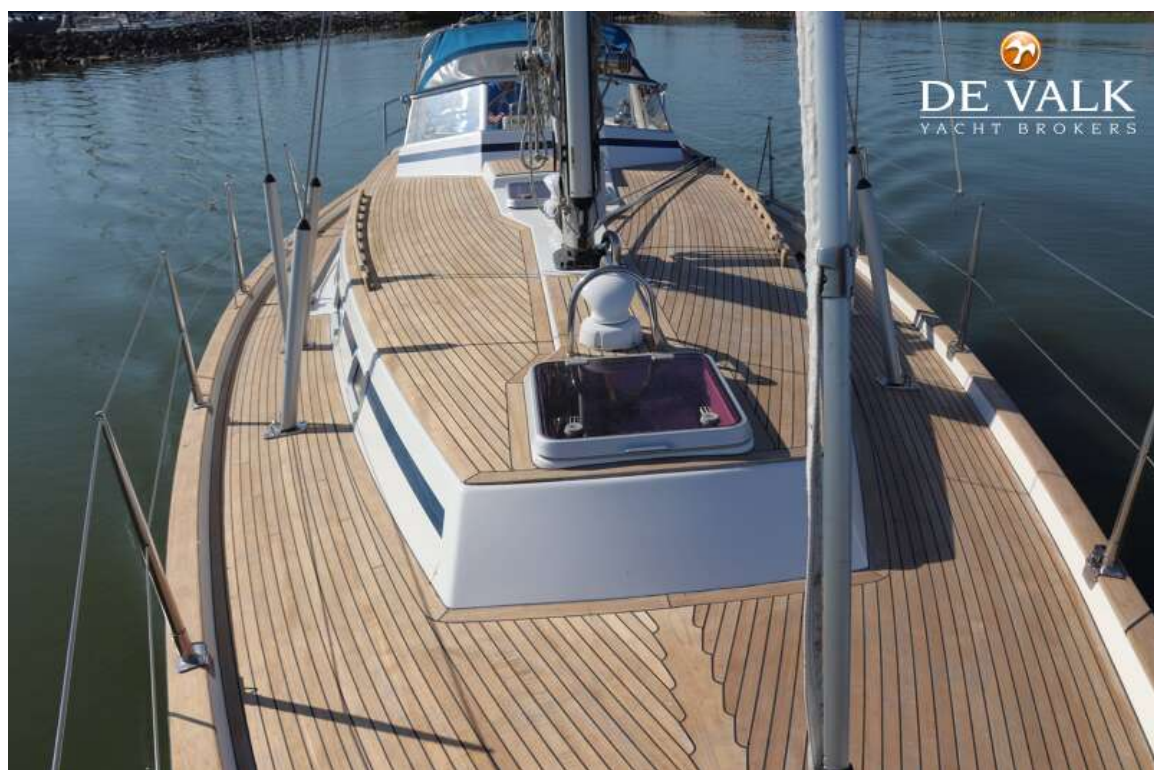
MALO 39 CLASSIC



MALO 39 CLASSIC



MALO 39 CLASSIC



MALO 39 CLASSIC



MALO 39 CLASSIC



MALO 39 CLASSIC



MALO 39 CLASSIC



MALO 39 CLASSIC



MALO 39 CLASSIC



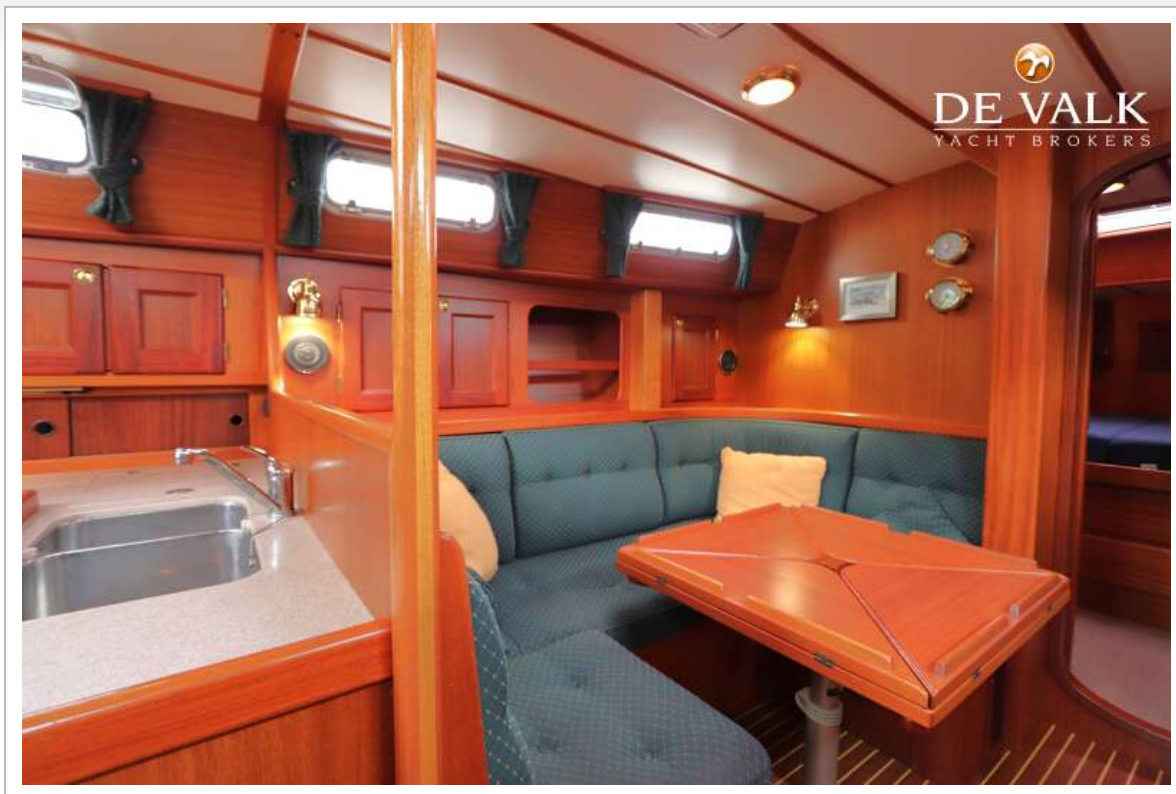
MALO 39 CLASSIC



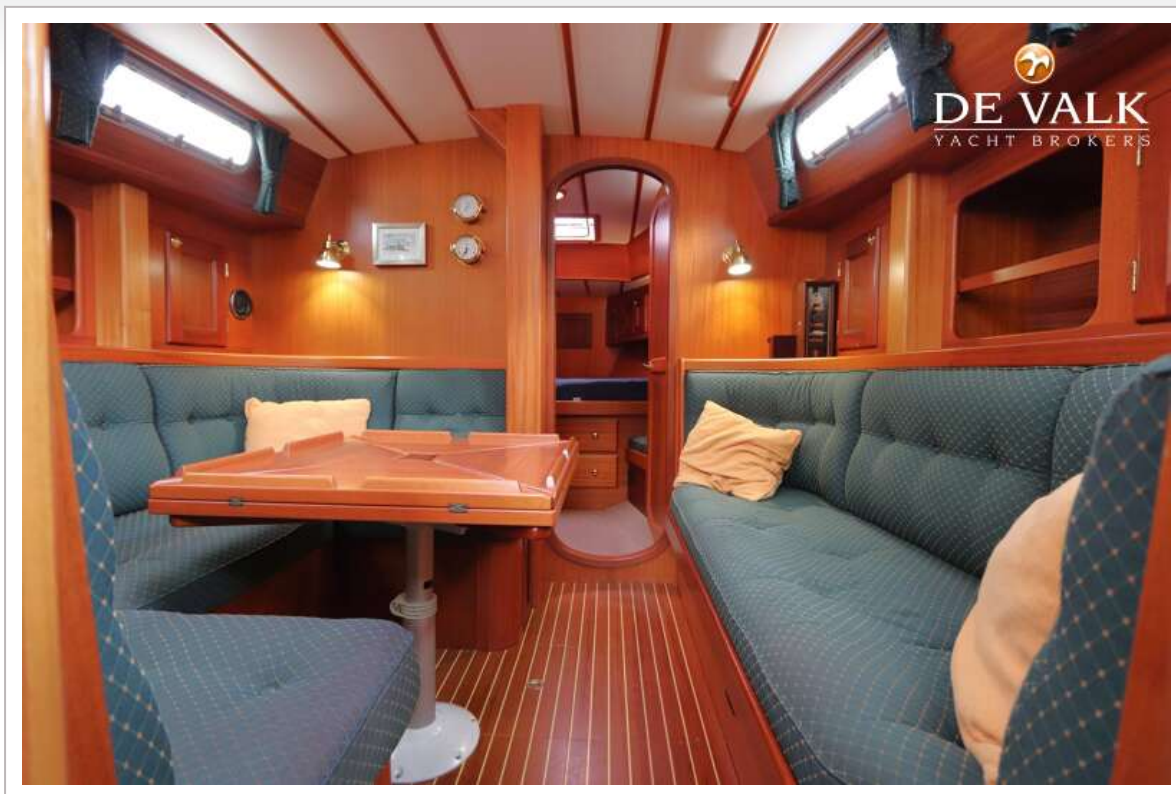
MALO 39 CLASSIC



MALO 39 CLASSIC



MALO 39 CLASSIC



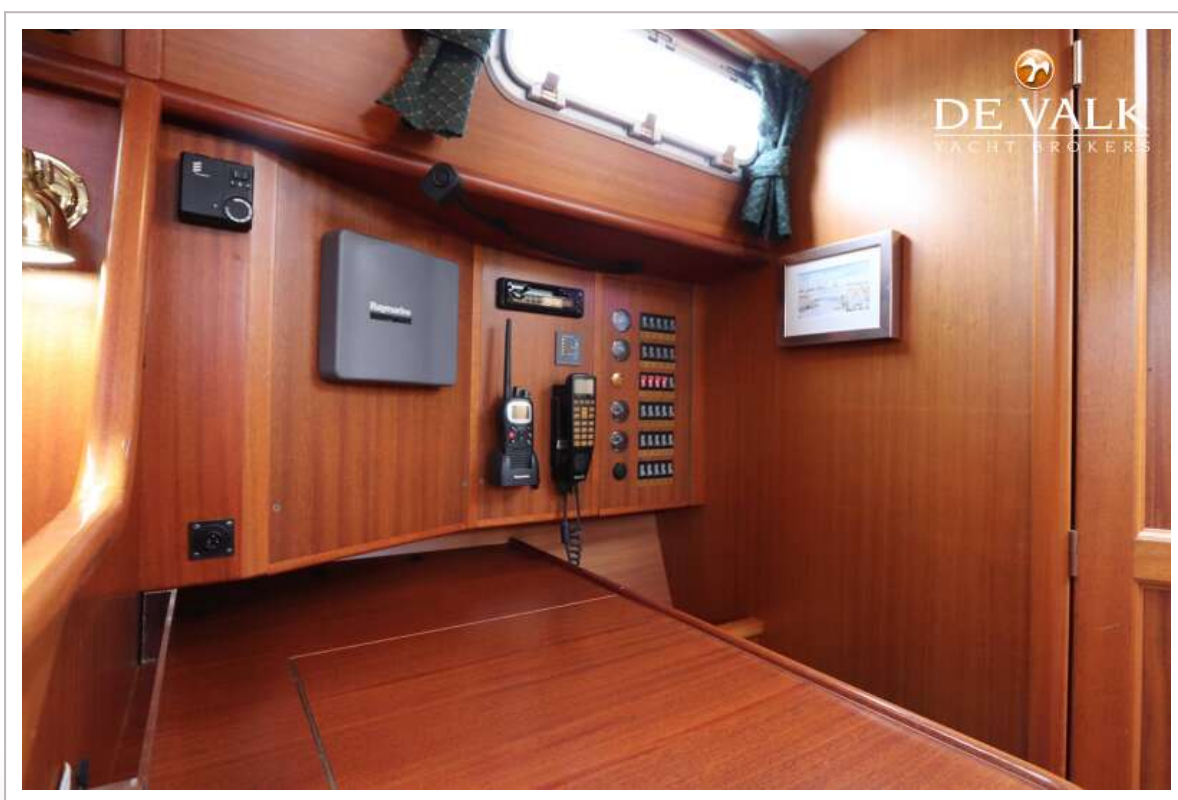
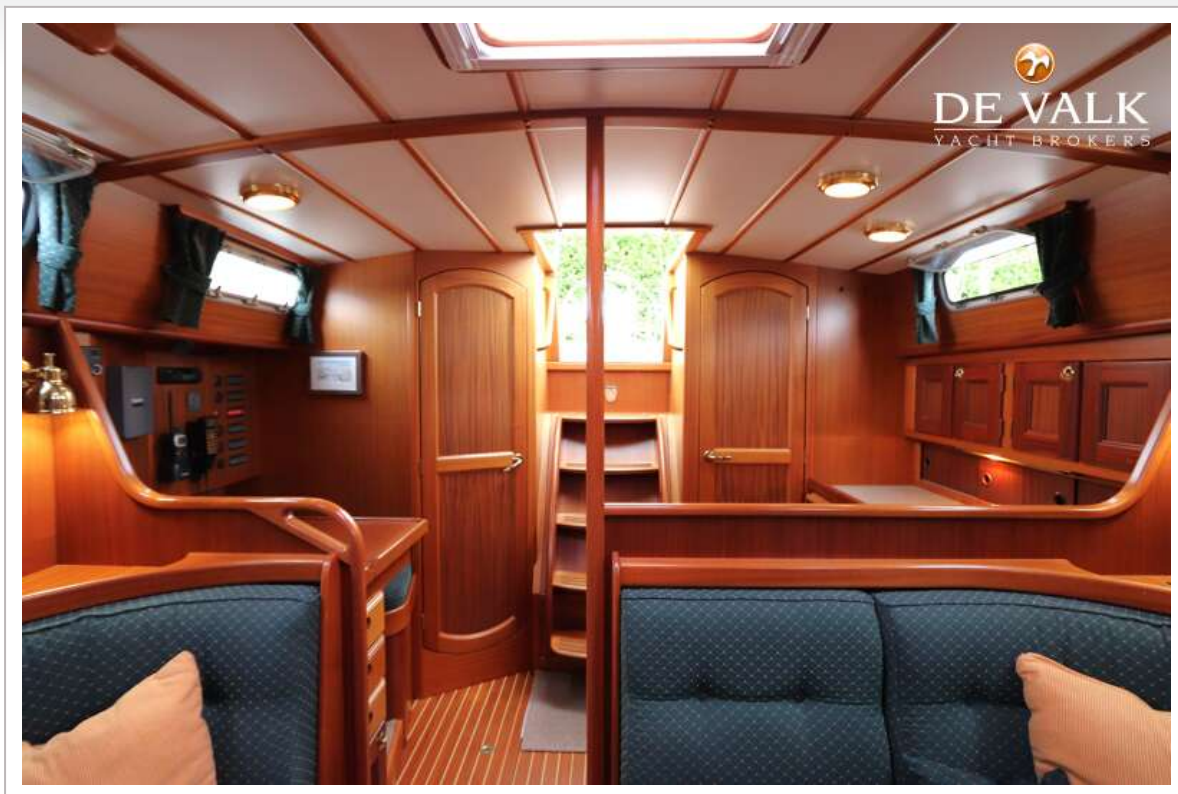
MALO 39 CLASSIC



MALO 39 CLASSIC



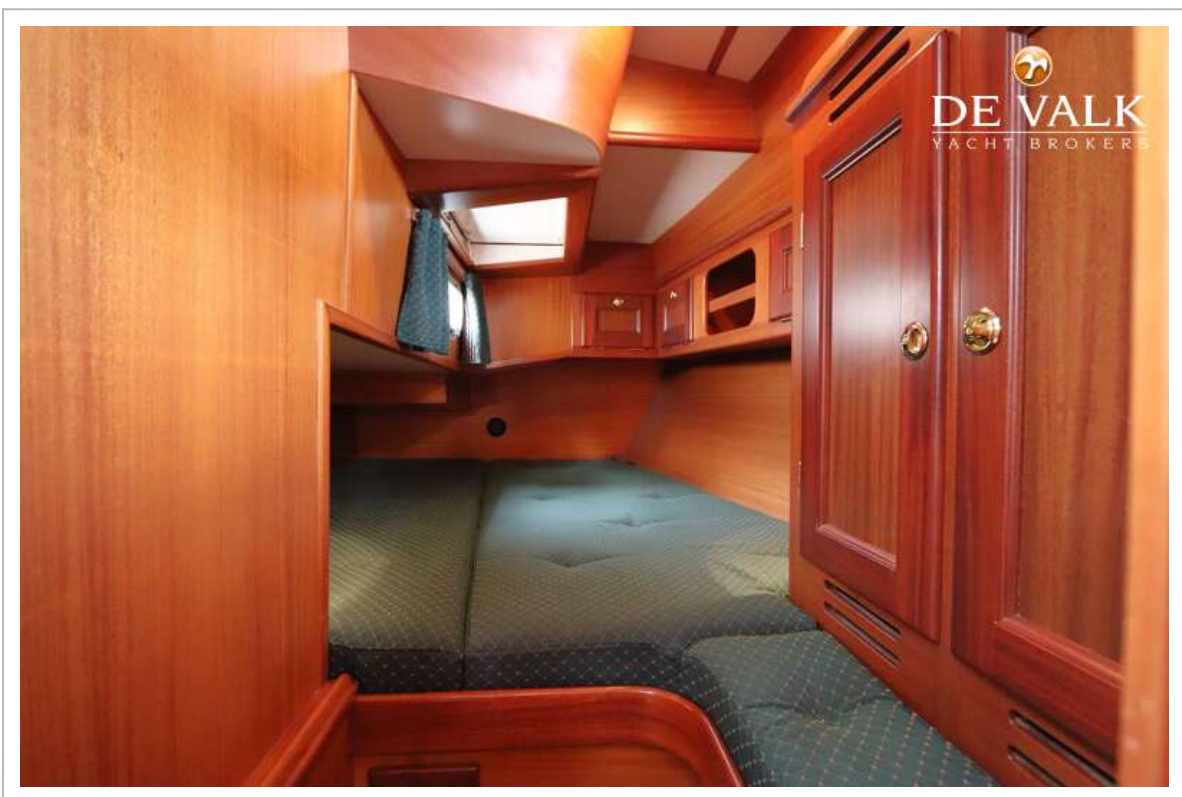
MALO 39 CLASSIC



MALO 39 CLASSIC



MALO 39 CLASSIC



MALO 39 CLASSIC

