



DE VALK
YACHT BROKERS



DOGGERSBANK 1400 MY



DE VALK
YACHT BROKERS

BROKERAGE | CHARTER | BERTHS | FINANCE | INSURANCE | YACHT MANAGEMENT

BROKER'S COMMENTS

Doggersbank 1400 "Thule", a steel round-bilged motor yacht designed by Vripack yachting. This beautiful sea worthy motor yacht has a 2 cabin layout, each with their own facilities. The teak interior is tasteful finished. The galley below and her dinette offer comfort while being on board. Its salon with L-seat gives a wide view of the outside world. The rear cabin is furnished with a double bed with an en-suite bathroom. Her spacious aft deck with steering position and wide side decks, she offers plenty of outdoor space. "Thule" can be seen 7 days a week in our sales marina.

Reinier van der Wolf

SPECIFICATIONS

Dimensions	15.10 x 4.10 x 1.35 (m)	Builder	Doggersbank Jachtbouw Woudsend
Built	1991	Cabins	2
Material	Steel	Berths	6
Engine(s)	1 x Volvo Penta TAMD 61A/HD diesel	Hp/Kw	170.00 (hp), 124.95 (kw)
Asking price	sold (VAT)	Lying	at sales office

CONTACT

Sales office	De Valk Monnickendam B.V.	Telephone	+31 (0)299 65 63 50
Address	Hoogedijk 6 1145 PM Katwoude NL	E-mail	monnickendam@devalk.nl

DISCLAIMER

These particulars are given in good faith as supplied but cannot be guaranteed.



GENERAL

Model	DOGGERSBANK 1400 MY
Type	motor yacht
LOA (m)	15,10
LWL (m)	13,15
Beam (m)	4,10
Draft (m)	1,35
Air draft (m)	9,00
Air draft min (m)	3,20
Year built	1991
Builder	Doggersbank Jachtbouw Woudsend
Country	The Netherlands
Designer	Vripack Yachting Sneek
Displacement (t)	21
CE norm	NA
Hull material	steel
Hull colour	blue
Hull shape	round-bilged
Superstructure material	aluminium
Rubbing strake	aluminum
Deck material	steel
Deck finish	teak 2011
Antifouling (year)	2021
Dorades	yes
Window frame	aluminium
Window material	glass
Deckhatch	yes
Insulation	glasswool
Flybridge suncover	yes
Mast can be lowered	manual
Fuel tank (litre)	steel 2100 (in 2 compartments)



Level indicator (fuel tank)	yes
Freshwater tank (litre)	1000
Blackwater tank (litre)	350 (with Par waste cutter)
Level indicator (blackwater)	yes
Blackwater tank extraction	deck extraction + pump
Wheel steering	hydraulic + joy stick
Inside helm position	yes
Outside helm position	hydraulic
Extra info	Airdraft: 9m. with mast / 3.80m. mast down / 3.20m. windows down.

ACCOMMODATION

Cabins	2
Berths	6
Interior	teak
Floor	wood
Aft deck	yes
Saloon	yes
Headroom saloon (m)	1.95m
Heating	diesel ducted hot air Webasto
Navigation center	yes
Chart table	yes
Aft Cabin	yes
Dinette	yes
Dinette to convert into berth	1.65 x 1.20m
Opening door to aft deck	yes
Galley	yes
Countertop	plastic
Sink	stainless steel
Cooker	electric 2 burner
Extractor	yes



DOGGERSBANK 1400 MY

Microwave	Panasonic
Fridge	100l.
Freezer	yes
Hot water system	220V + engine
Water pressure system	electrical Par hydrofor
Crockery	yes
Owners cabin	double bed
Bed length (m)	2m x 1.65m
Wardrobe	hanging and shelves
Bathroom	en suite
Toilet	en suite
Toilet system	electric
Wash basin	in the bathroom
Shower	en suite
Guest cabin 1	v-bed
Bed length (m)	2m x 0.7m
Wardrobe	drawers
Bathroom	en suite
Toilet	en suite
Toilet system	electric
Wash basin	in the bathroom
Shower	Disconnected
Extra info	Headroom on board: Front cabin: 2.00 / En-suite bathroom: 2.03 / Galley/ dinette: 2.02 / Saloon/pilothouse: 2.00 / Work place: 1.91 / Masterbedroom: 1.95 En-suite bathroom: 1.89 / Engine room:1.44

MACHINERY

No of engines	1
Make	Volvo Penta
Type	TAMD 61A/HD
HP	170



DOGGERSBANK 1400 MY

kW	124.95
Fuel	diesel
Year installed	1991
Maximum speed (kn)	9,5
Cruising speed (kn)	7,5
Consumption (l/hr)	8
Engine hours	6200
Engine cooling system	freshwater heat exchanger
Drive	shaft
Engine controls	yes
Gearbox	mechanical Twin-Disc
Bowthruster	hydraulic 18 hp
Exhaust	watercooled
Propeller type	fixed
Propeller blades	4
Propeller shaft material	stainless steel
Shaft lubrication	yes
Manual bilge pump	yes
Electric bilge pump	yes
Bilge alarm	yes
Electrical installation	12/24/220 v
Generator	silent separator 9.7 kW 2 cyl. Volvo 11MDV
Batteries	4x 340 amp
Start battery	2x
Service battery	4x
Generator battery	1x
Inverter	24 / 12
Shorepower	with cable
Extra info	water tight door to the engine room.

NAVIGATION



Compass	yes
Electric compass	yes
Depth sounder	yes
Log	yes
Repeater	yes
VHF	2x
Autopilot	yes
Rudder angle indicator	yes
Radar	yes
GPS	yes
Radio receiver	yes
Transmitter	yes
Navigation lights	yes
Searchlight	yes

EQUIPMENT

Fixed windscreen	yes
Sun awning	yes
Bathing platform	yes
Boarding ladder	stainless steel
Anchor	Brittany
Anchor 2	Danforth
Anchor chain	75m
Windlass	hydraulic
Dinghy	rigid hull
Outboard	yes
Davits	stainless steel
Davits controls	manual
Sea railing	yes
Grab rail (superstructure)	stainless steel
Railing side opening gates	yes



Pushpit	yes
Pulpit	yes
Life raft	2022 (Plastimo)
Life raft (pers)	container 4p
Lifejackets	4x
Wiper	yes
Horn	air pressure
Mooring lines	4x
Spare parts	yes
Tools	yes
Radio-cd player	yes
Speakers in salon	yes
Clock - barometer	yes

RIGGING

Material mast	aluminium
Mast lowering system	manual
Trysail	yes



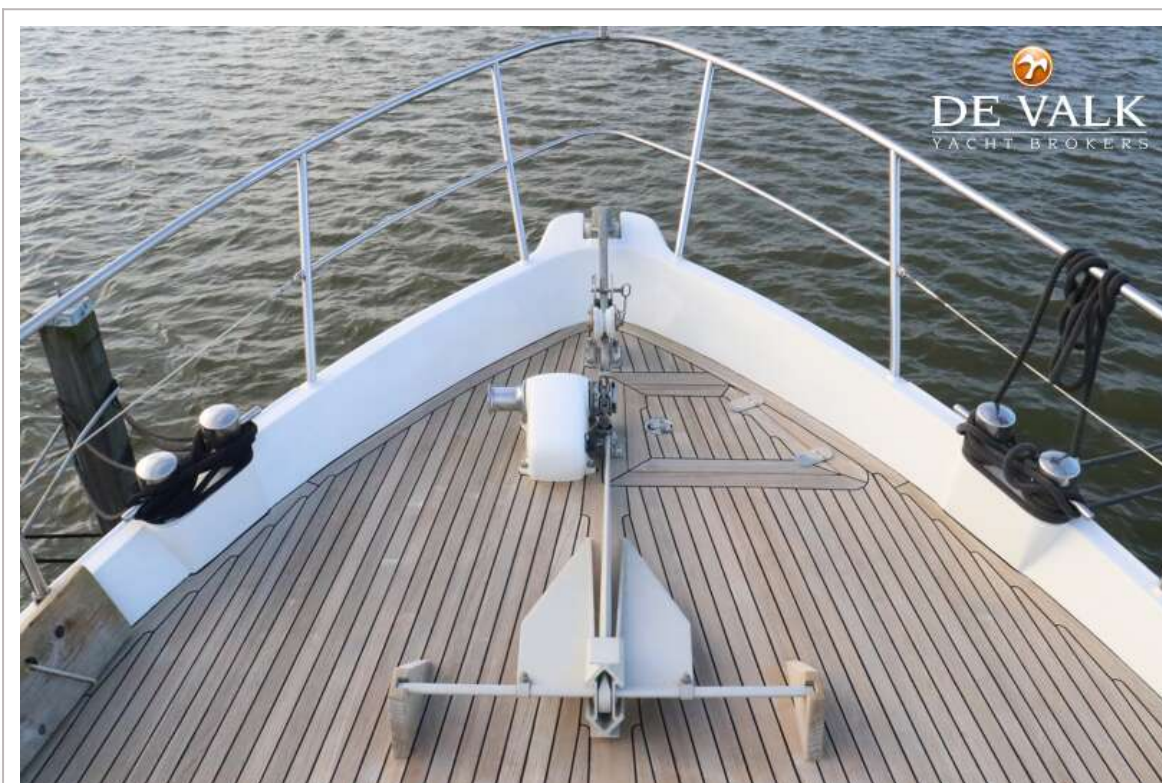
DOGGERSBANK 1400 MY



DOGGERSBANK 1400 MY



DOGGERSBANK 1400 MY



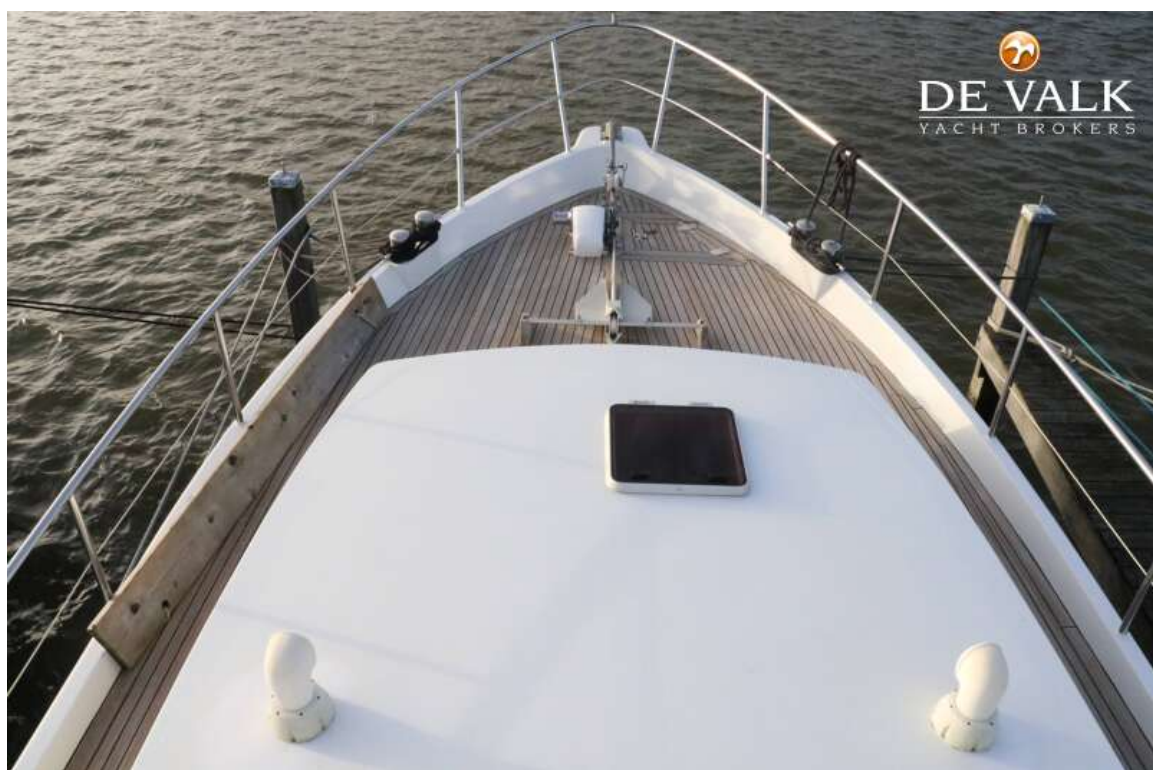
DOGGERSBANK 1400 MY



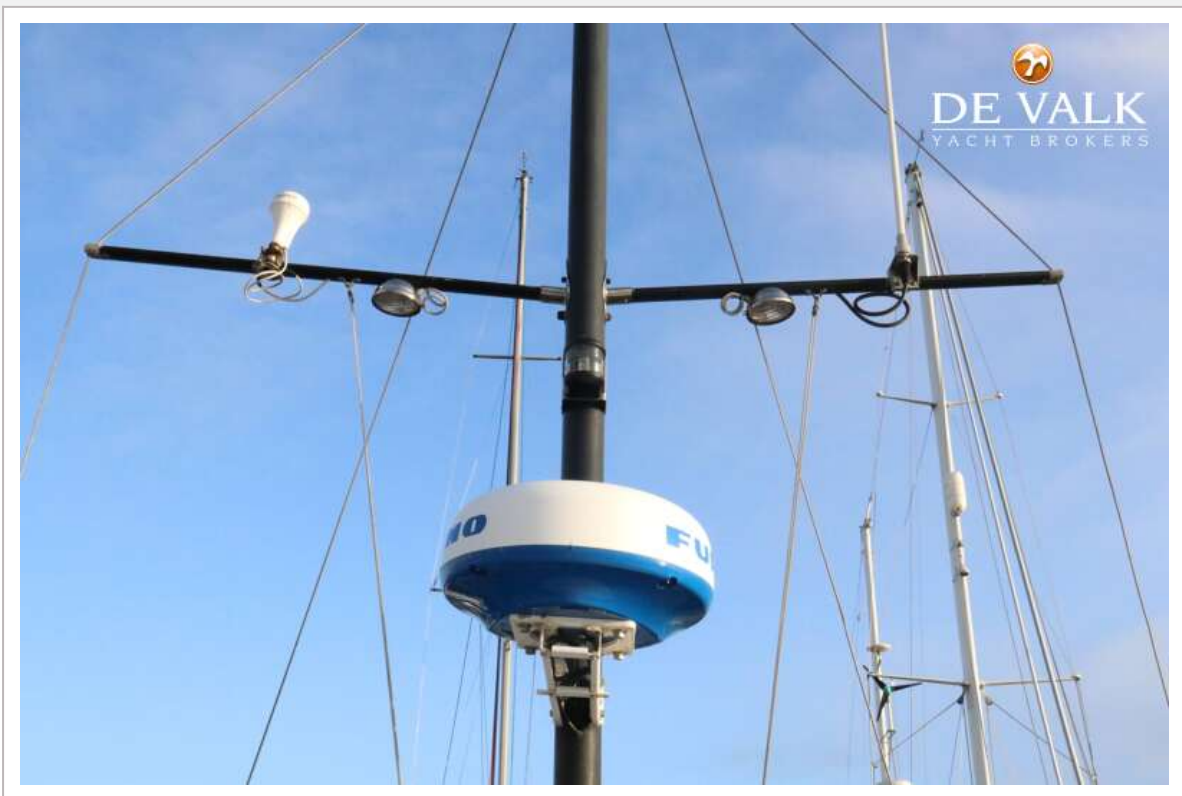
DOGGERSBANK 1400 MY



DOGGERSBANK 1400 MY



DOGGERSBANK 1400 MY



DOGGERSBANK 1400 MY



DOGGERSBANK 1400 MY



DOGGERSBANK 1400 MY



DOGGERSBANK 1400 MY



DOGGERSBANK 1400 MY



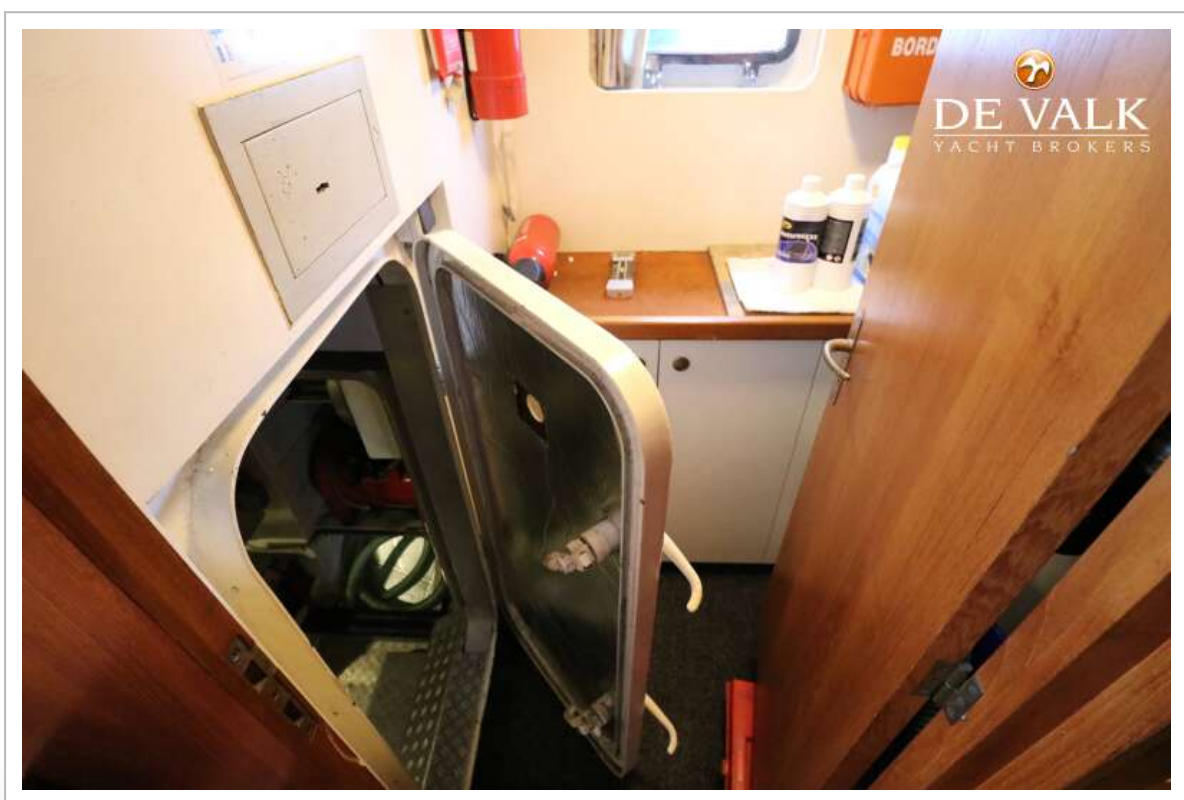
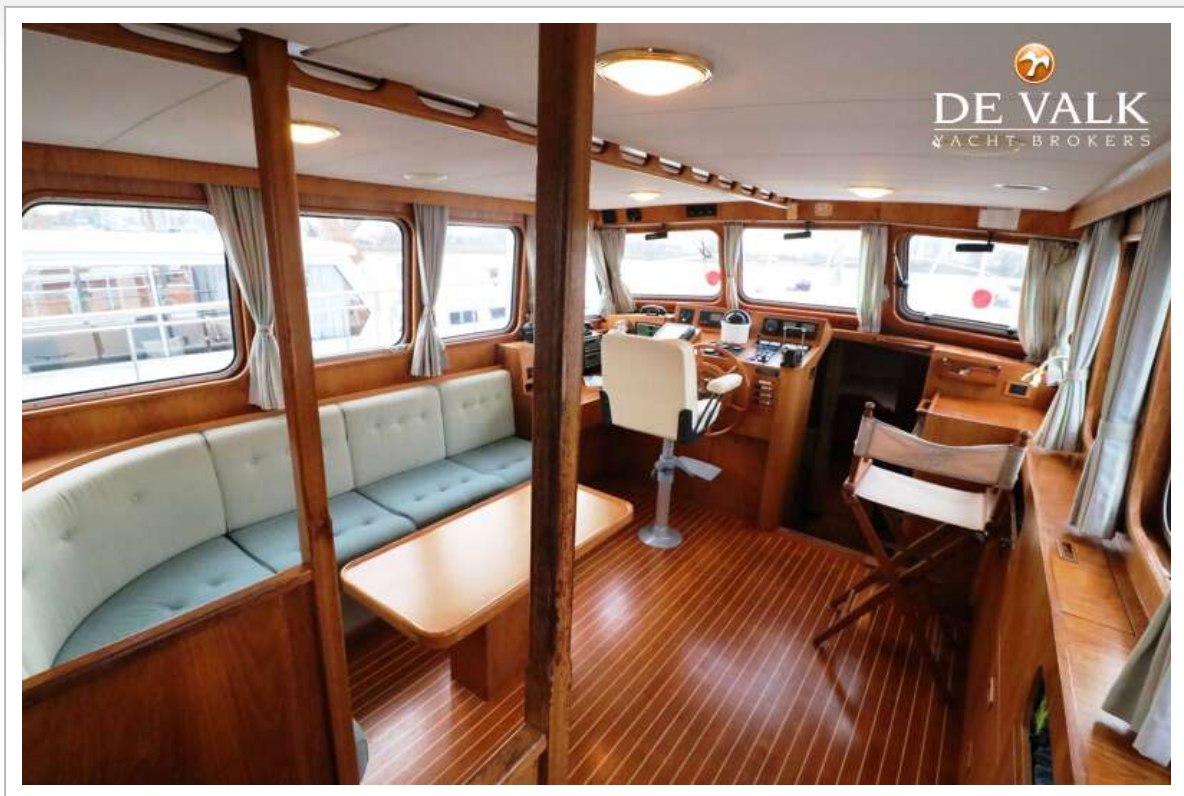
DOGGERSBANK 1400 MY



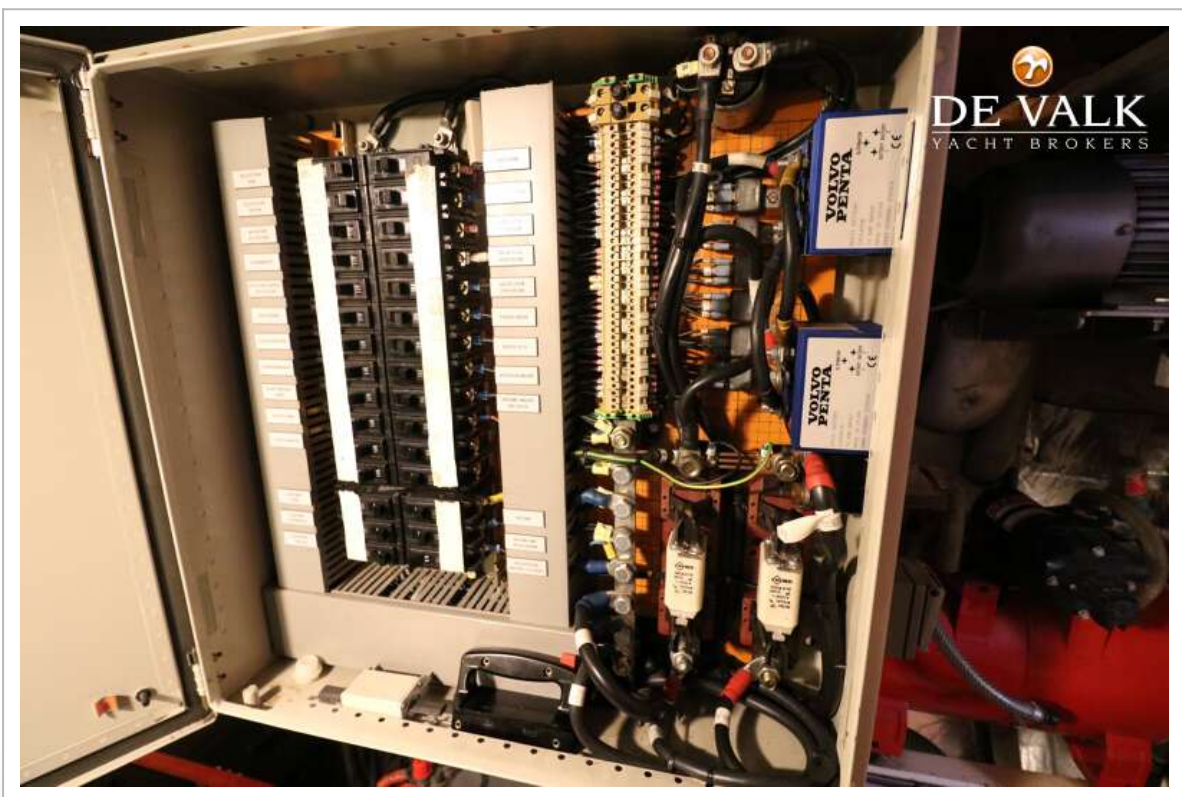
DOGGERSBANK 1400 MY



DOGGERSBANK 1400 MY



DOGGERSBANK 1400 MY



DOGGERSBANK 1400 MY





DOGGERSBANK 1400 MY

