



## JPK 38 FAST CRUISER



# JPK 38 FAST CRUISER

## BROKER'S COMMENTS

A unique opportunity and rarely for sale. The JPK 38 combines the experience of offshore racing, the cruising experience and a desire to voyage combining the pleasure of sailing, the quality of life aboard and safety. High speeds with the right trim, she even planes and 20 knots is no exception. Due to the width of almost 4 meters, you have ample interior and exterior space. Characteristic is the light modern interior with the right "performance" look. Do not forget to study the extensive option list. Located in our sales marina, this JPK is ready to sail the 7 seas in record time.

*Sander van der Voorn*

## SPECIFICATIONS

<b>Dimensions</b>	11.38 x 3.99 x 2.15 (m)	<b>Builder</b>	JPK Composites, France
<b>Built</b>	2013	<b>Cabins</b>	3
<b>Material</b>	GRP	<b>Berths</b>	6
<b>Engine(s)</b>	1 x Volvo Penta 11-30 diesel	<b>Hp/Kw</b>	30.00 (hp), 22.05 (kw)
<b>Asking price</b>	sold (VAT )	<b>Lying</b>	at sales office

## CONTACT

<b>Sales office</b>	De Valk Monnickendam B.V.	<b>Telephone</b>	+31 (0)299 65 63 50
<b>Address</b>	Hoogedijk 6 1145 PM Katwoude NL	<b>E-mail</b>	monnickendam@devalk.nl

## DISCLAIMER

These particulars are given in good faith as supplied but cannot be guaranteed.



# JPK 38 FAST CRUISER

## GENERAL

Model	JPK 38 FAST CRUISER
Type	sailing yacht
LOA (m)	11,38
LWL (m)	10,40
Beam (m)	3,99
Draft (m)	2,15
Air draft (m)	19,10
Headroom (m)	1,95
Year built	2013
Launched	2014
Builder	JPK Composites, France
Country	France
Designer	J. Valer
Displacement (t)	5,1
Ballast (tonnes)	lead 1,9
CE norm	A
Hull material	GRP
Hull colour	white
Keel type	bulb keel
Superstructure material	GRP
Deck material	GRP
Deck finish	non-skid moulded in
Superstructure deck finish	non-skid moulded in
Cockpit deck finish	non-skid moulded in
Antifouling (year)	2021
Window material	polycarbonate
Deckhatch	3
Portholes	6
Fuel tank (litre)	polyethylene 90 l
Fuel tank 2 (litre)	polyethylene 90 l



# JPK 38 FAST CRUISER

Level indicator (fuel tank)	yes
Freshwater tank (litre)	polyethylene 200 l
Blackwater tank (litre)	polyethylene
Blackwater tank extraction	deck extraction + uw line
Tiller	dubble
More info on hull	Airex and balsa cored, vinylester infusion sandwich construction Hull/deck assembly with vinylester glue Outhaul for bowsprit
Extra info	Dual tiller with stick Carbon composite execution Complete JP 3 system with level self-aligning needles and adjusting tierods

## ACCOMMODATION

Cabins	3
Berths	6
Interior	cherry
Floor	wood
Open cockpit	yes
Saloon	U-shape ergonomic seating mounted on integral double- moulding Fix table Open storage space behind seating Lamps - shelflets
Heating	Planar 44D 12/24 GP 8 air heater
Navigation center	Starboard side chart table with ergonomic seat and elevated position Under-table storage compartment Inclined instrument panel
Aft Cabin	yes
Opening door to cockpit	yes
Galley	Starboard side Infused composite low cabinets, high cabinets in wood Oven, freezer, pressurized hot water, double sink
Countertop	plastic
Sink	stainless steel 2 x
Cooker	ENO
Fridge	yes
Hot water system	220V + engine
Water pressure system	electrical



# JPK 38 FAST CRUISER

Manual and/or foot pump	yes
Owners cabin	v-bed
Bed length (m)	2,00
Wardrobe	shelves
Bathroom	separate
Toilet	shared
Toilet system	manual Jabsco
Wash basin	in the bathroom
Shower	shared
Extra info	Owners cabin Double berth 2.00 x 1.60 Storage starboard and portside Under-seating storage Crash box Double-moulded W.C.+ washbasin unit. Shower with bilge pump Sink Lockers
Guest cabin 1	double bed
Bed length (m)	1,95
Wardrobe	shelves
Extra info	Aft cabin (portside) Double berth 1.95 x 1.50 Storage chest and wardrobe Open lateral cupboard
Guest cabin 2	
Bed length (m)	1,95

## MACHINERY

No of engines	1
Make	Volvo Penta
Type	11-30
HP	30
kW	22,05
Fuel	diesel
Engine hours	565
Engine cooling system	freshwater heat exchanger
Drive	sail-drive
Saildrive seal	yes
Gearbox	mechanical



# JPK 38 FAST CRUISER

Exhaust	watercooled
Propeller type	folding
Propeller blades	2
Manual bilge pump	yes
Electric bilge pump	yes
Electrical installation	12v / 220 v
Generator	Watt & Sea Hydro generator
Start battery	1 x 75 Ah
Service battery	2 x 105 Ah
Battery charger	SBC Advance plus 300 FR
Solar panel	4 x
Shorepower	with cable
Watermaker	operation unknown

## NAVIGATION

Compass	2 x
Electric compass	RC42N-Micro C mini gyro compass
Depth sounder	B&G Triton
Log	B&G Triton
Windset	B&G Triton
Repeater	B&G Triton T41 display
Fish finder	yes
VHF	Icom IC M 423 DSC
Autopilot	B&G Pilot Triton Pack
Radar/GPS/plotter	B&G Zeus 12 TOUCH European
Wifi antenna	GoFree WIFI module
AIS transponder	AIS Simrad NAIS 400, NAIS-400L-AIS class B Black box
Navigation lights	yes
Extra info	DD15-Mechanical cylinder with incorporated FR 300 feedback, DL4050-Link arm for DD15-Length 400-500 mm Autopilot



# JPK 38 FAST CRUISER

## Extra info

ZG50-5Hz GPS antenna, broadband sounder moduleBSM-1 with P309 BI 600w probe, NSPL-400 Antenna splitter, 3 OP10 pilot controls. Radar B&G 4G with scanstrut self-levering radar support

## EQUIPMENT

Sprayhood with grab rail	yes
Cockpit cushions	yes
Cockpit table	yes
Boarding ladder	stainless steel
Deck shower	yes
Anchor	Rocna 15 kg
Anchor chain	yes
Windlass	electrical Quick
Outboard support	yes
Davits	stainless steel
Sea railing	wire
Grab rail (superstructure)	stainless steel
Radar reflector	Echo max active Xs Dual Band Radar
Fenders	yes
Mooring lines	yes
Radio-cd player	Fusion
Speakers in salon	yes
Fire extinguisher	2

## RIGGING

Rigging	sloop 9/10 marconi
Standing rigging	wire 1 x 19
Material mast	aluminium coated
Spreaders	Swept-back 2x
Mainsail	yes



# JPK 38 FAST CRUISER

<b>Mainsail cover</b>	Hagoort
<b>Battcars</b>	yes
<b>Fully battened mainsail</b>	41 M2 North sail, slatted T CUT dyneema Noriam SRP 75 taffeta 2 sides
<b>Genoa</b>	TCUT Dyneema Noriam SRP 75 taffeta 2 sides 37m2 NorthSail
<b>Genoa furler</b>	Fancor Flat deck Furler
<b>Gennaker</b>	GO on Norlon NO 250 single-color nylon furler white 80 m2 North sails
<b>Spinnaker</b>	medium asy G2 nylon Norlon 150 m2 + spinnaker sock white North sails
<b>Staysail</b>	polyester Nordac ND 9.4oz HA 19 m2 North sails
<b>Staysail furler</b>	Furling staysail Fancor Complete Karver KF 2 furler
<b>Reefing System</b>	quick-one-line-reefing
<b>Backstay adjuster</b>	tackle
<b>Boomvang</b>	gasspring
<b>Primary sheet winch</b>	2 x Harken 40
<b>Genoa sheetwinches</b>	2 x Harken 46
<b>Halyard winches</b>	2 x Harken 35





# JPK 38 FAST CRUISER



# JPK 38 FAST CRUISER



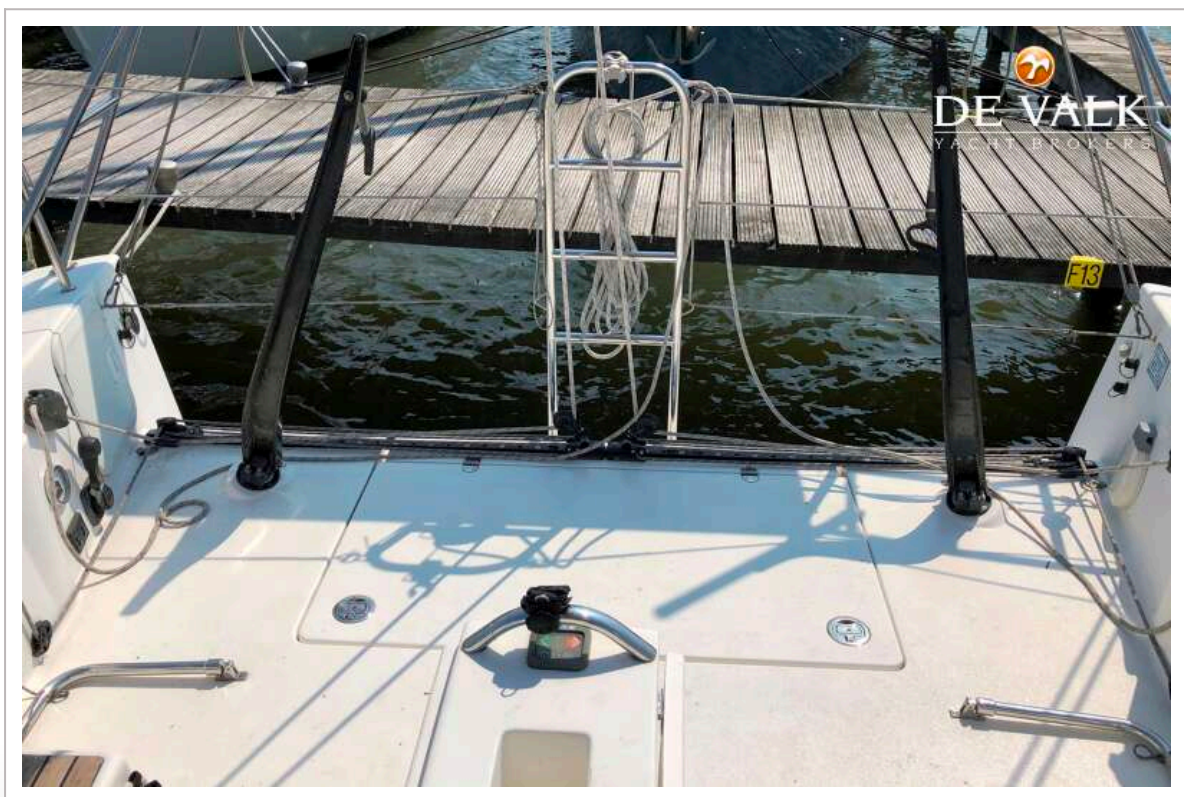


# JPK 38 FAST CRUISER





# JPK 38 FAST CRUISER





# JPK 38 FAST CRUISER





# JPK 38 FAST CRUISER

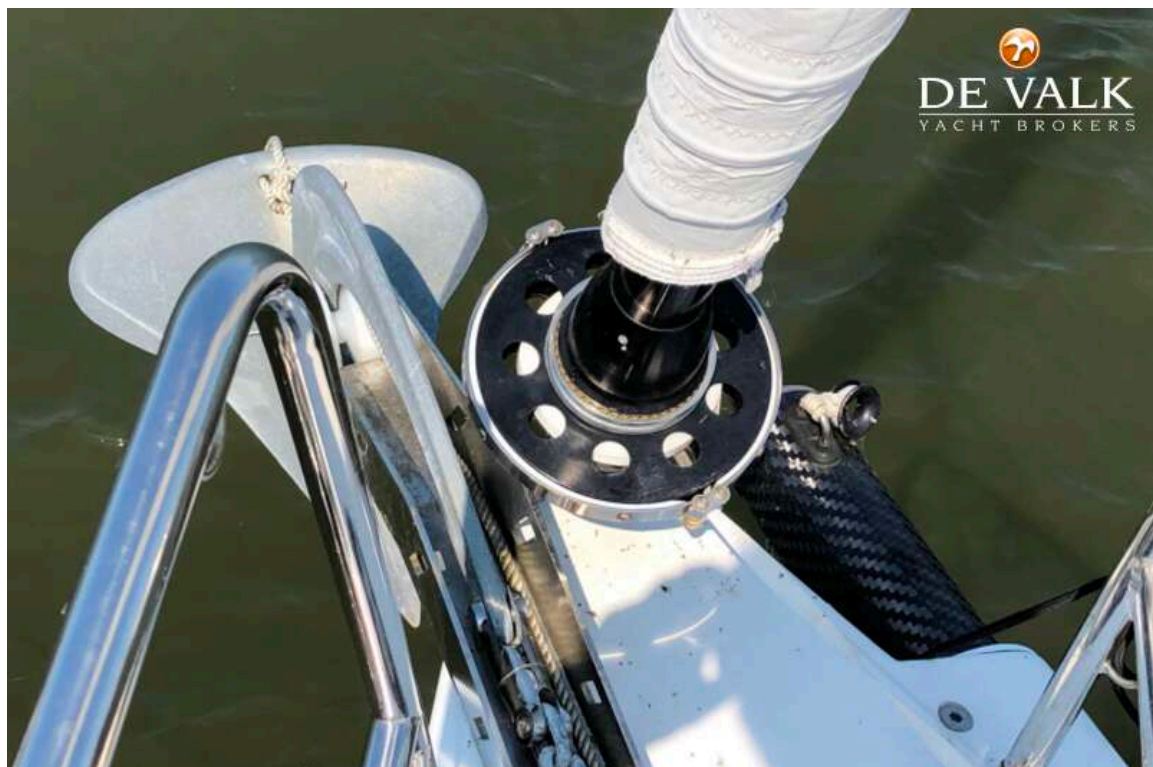




# JPK 38 FAST CRUISER

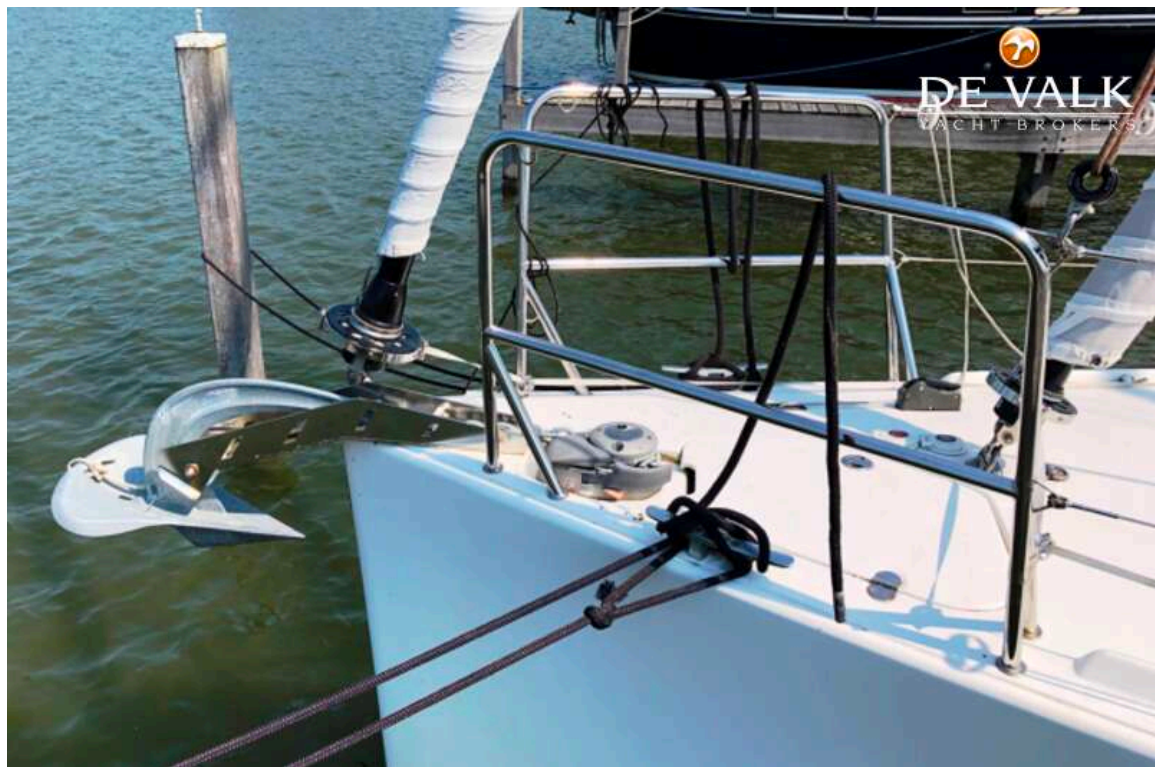


# JPK 38 FAST CRUISER





# JPK 38 FAST CRUISER



# JPK 38 FAST CRUISER





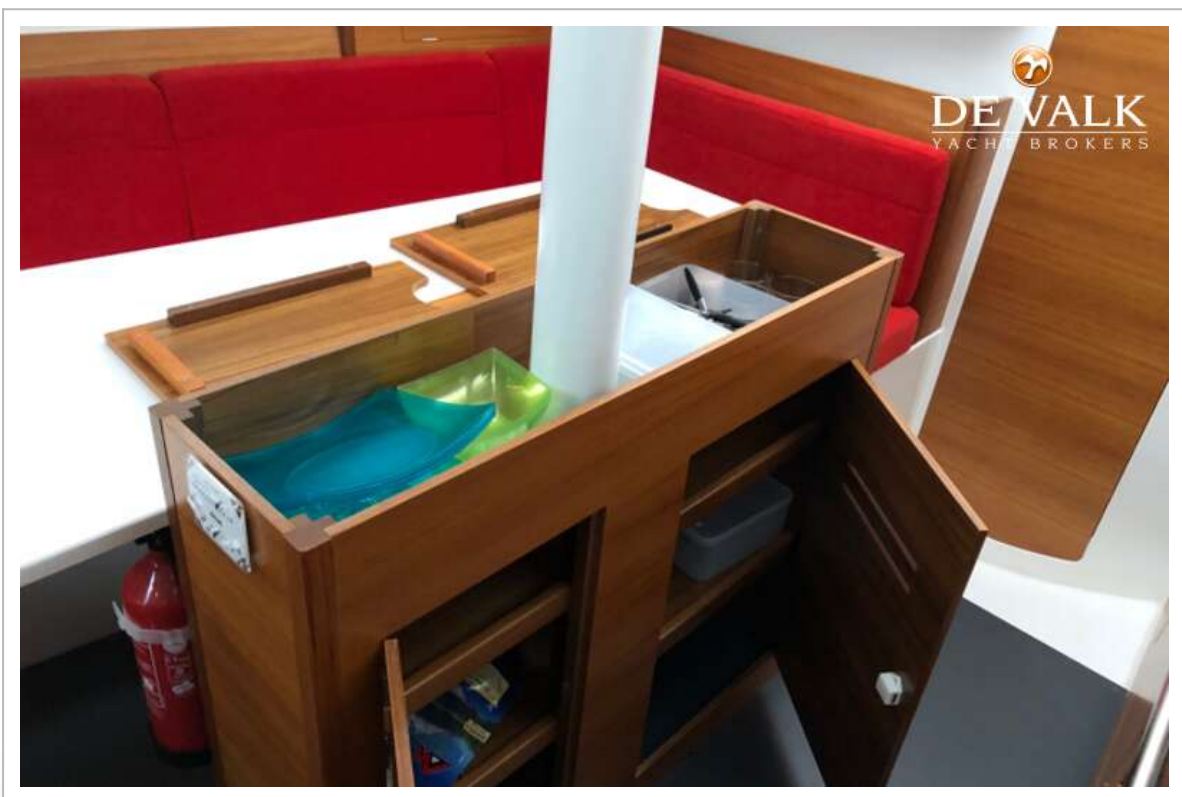
# JPK 38 FAST CRUISER



# JPK 38 FAST CRUISER

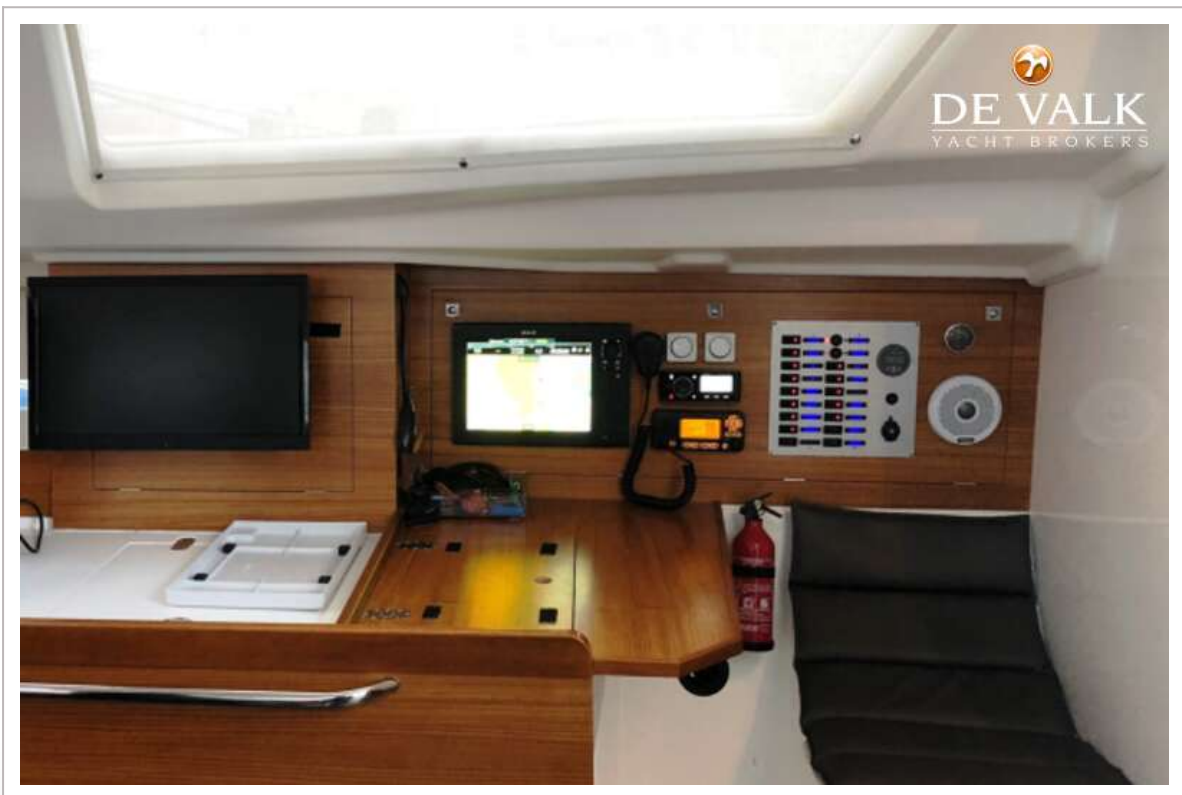


# JPK 38 FAST CRUISER

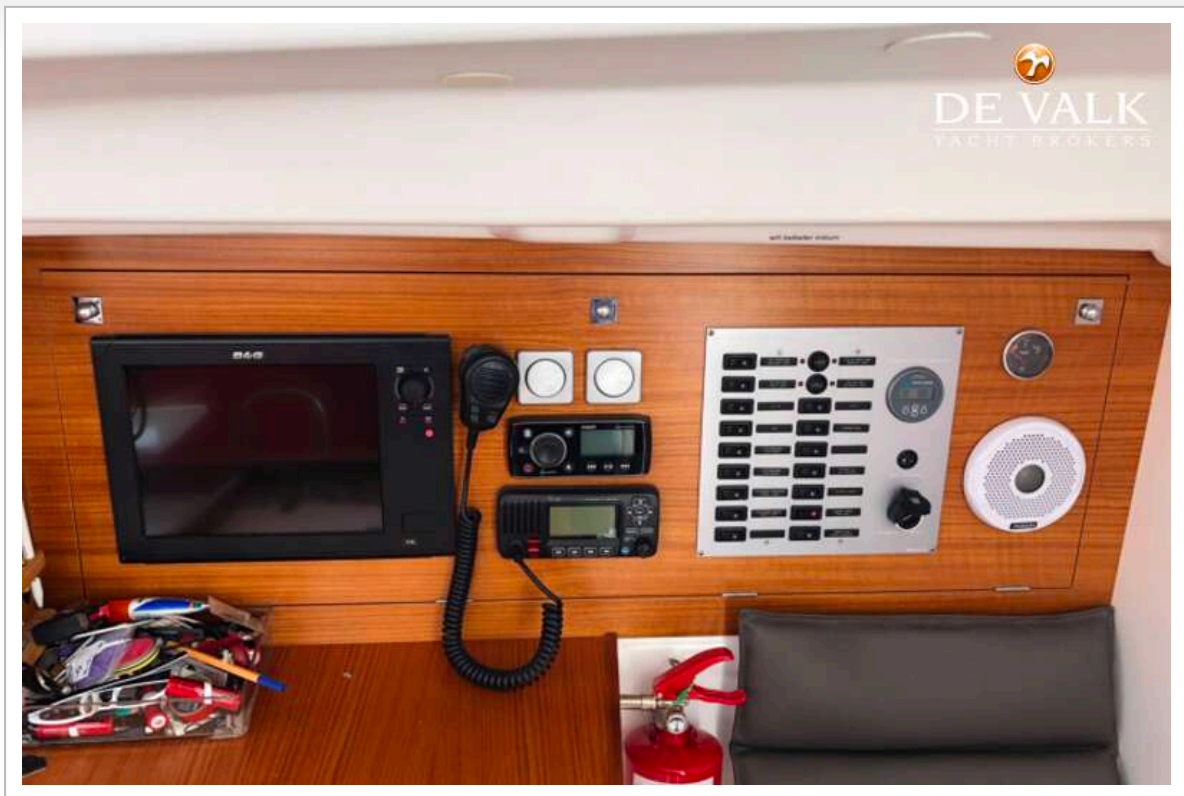




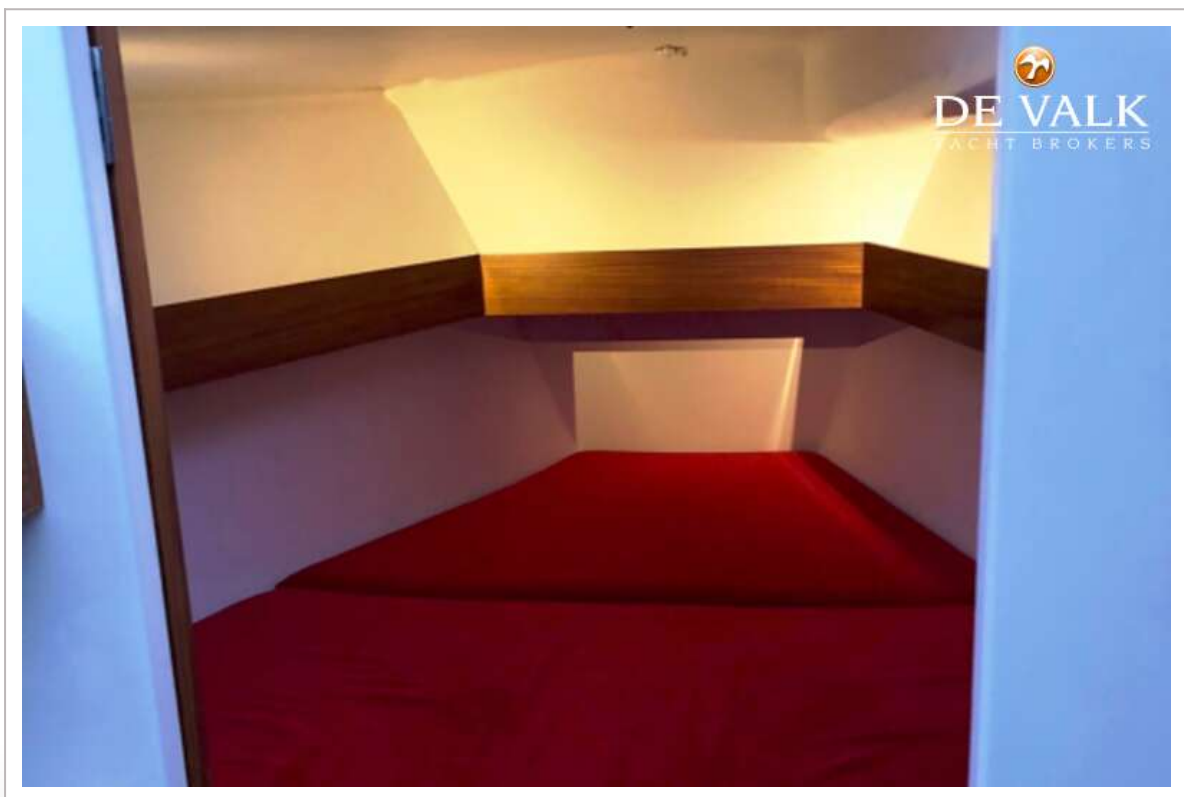
# JPK 38 FAST CRUISER



# JPK 38 FAST CRUISER

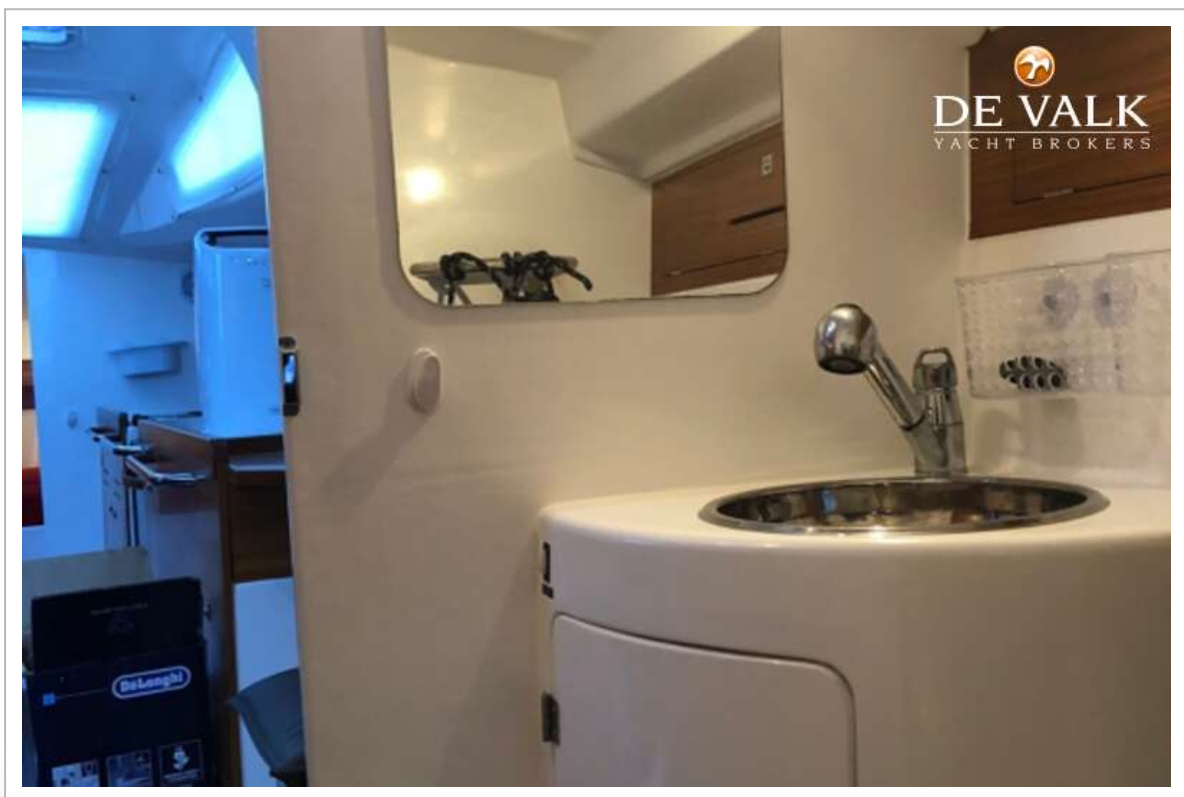
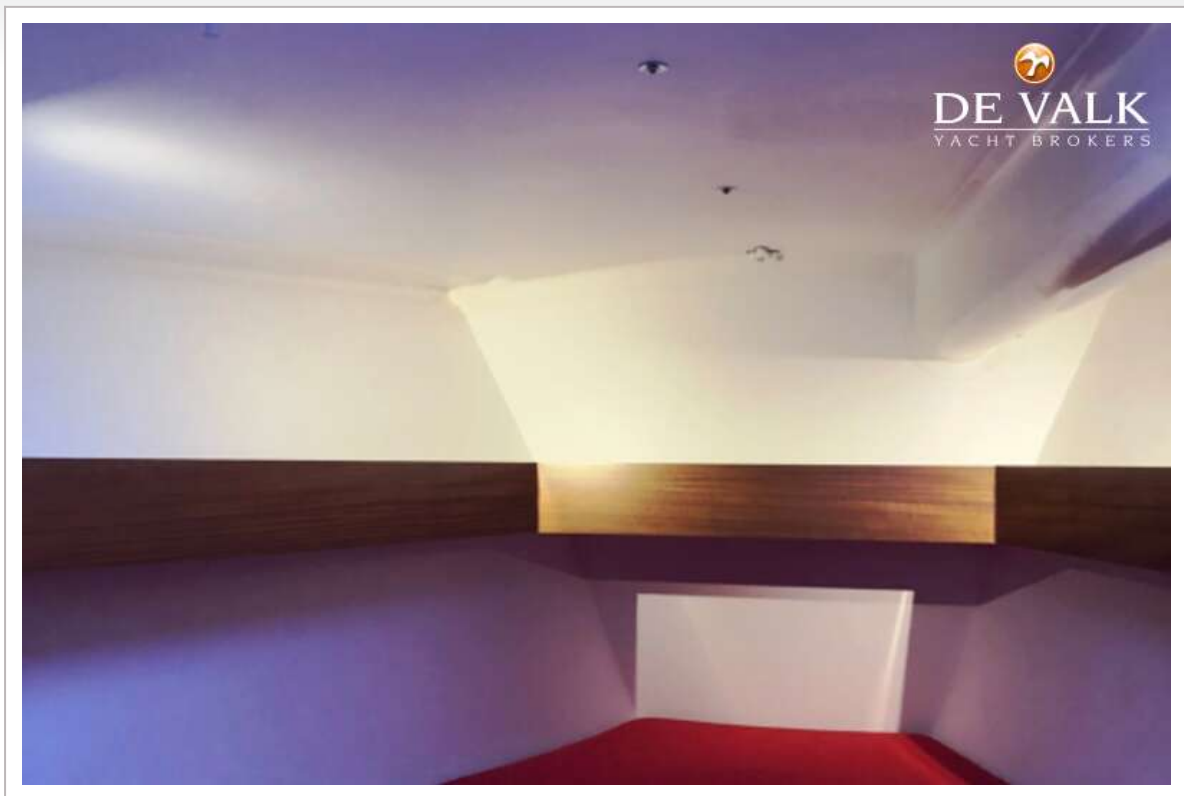


## JPK 38 FAST CRUISER

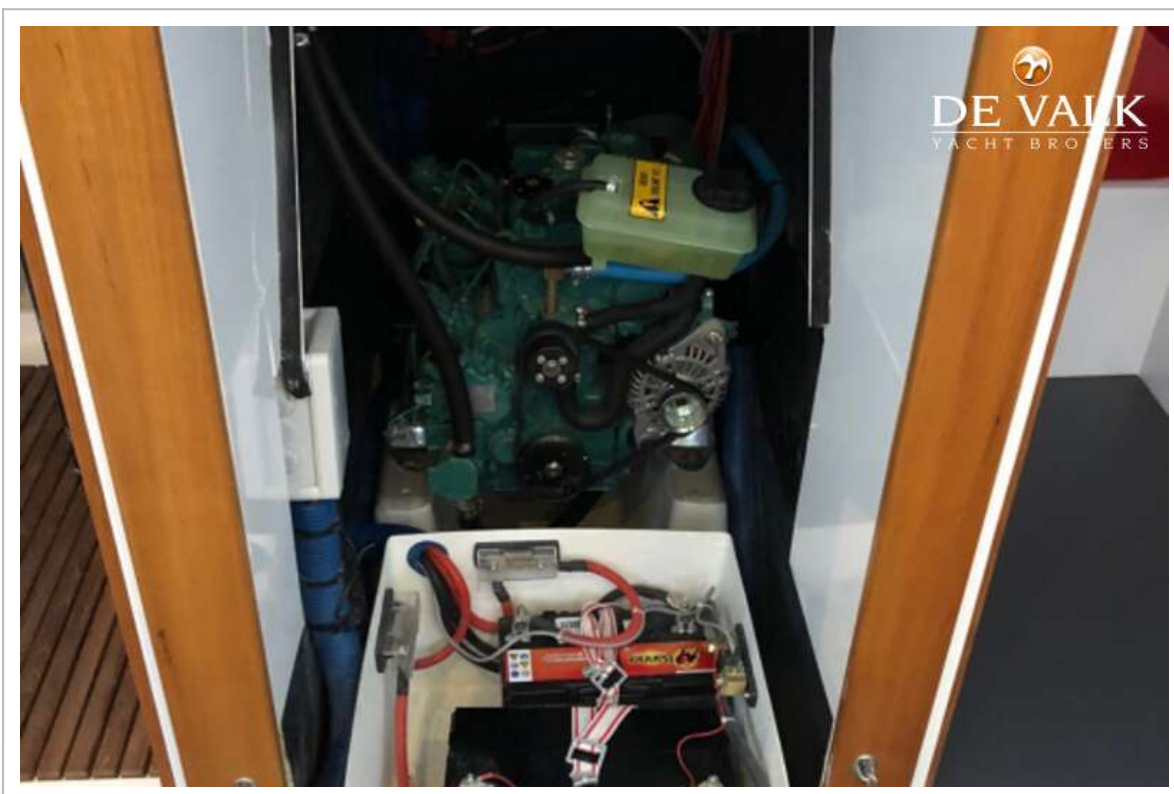




# JPK 38 FAST CRUISER



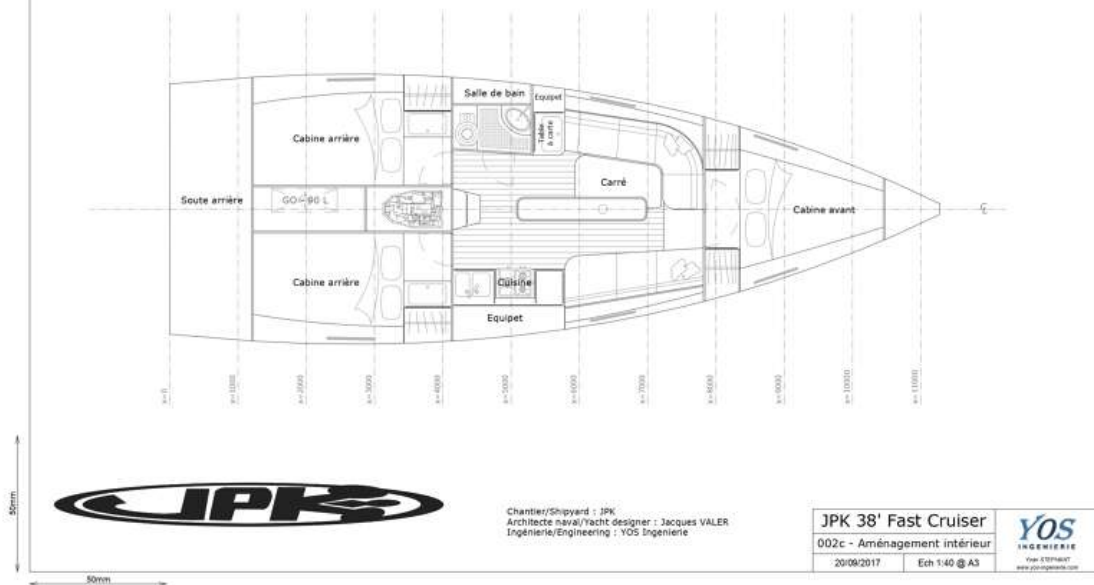
## JPK 38 FAST CRUISER



# JPK 38 FAST CRUISER



## JPK38 FC - Aménagement intérieur - Interior layout



# JPK 38 FAST CRUISER

