



MOCHI 56



BROKER'S COMMENTS

Special vessel with the sleek Novulari & Lenard design offers lots of space and "big boat features" including: 3 cabins, 3 bathrooms, 2 stairs to the flybridge. The boat is well maintained, including her mighty MAN diesel engines. The boat has recently been provided with new canvas and cushions. For viewing in our covered sales harbour in Loosdrecht.

Mark Hesselmans

SPECIFICATIONS

Dimensions	17.65 x 4.73 x 1.20 (m)	Builder	Mochi Craft
Built	1996	Cabins	3
Material	GRP	Berths	6
Engine(s)	2 x MAN diesel	Hp/Kw	2 x 820.00 (hp), 602.70 (kw)
Asking price	sold (VAT)	Lying	at sales office

CONTACT

Sales office	De Valk Loosdrecht B.V.	Telephone	+31 (0)35 582 90 30
Address	't Breukeleveense Meentje 6 1231LM Loosdrecht / Wijdmeren NL	E-mail	loosdrecht@devalk.nl

DISCLAIMER

These particulars are given in good faith as supplied but cannot be guaranteed.



GENERAL

Model	MOCHI 56
Type	motor yacht
LOA (m)	17,65
Beam (m)	4,73
Draft (m)	1,20
Air draft (m)	5,00
Headroom (m)	2,00
Year built	1996
Builder	Mochi Craft
Country	Italy
Displacement (t)	30
CE norm	NA
Hull material	GRP
Hull colour	white
Hull shape	Fast Displacement Hull
Superstructure material	GRP
Deck material	GRP
Deck finish	non-skid moulded in
Cockpit deck finish	teak
Antifouling (year)	2019
Window material	glass
Deckhatch	yes
Portholes	stainless steel
Flybridge	yes
Flybridge cover	yes
Radar arch	
Fuel tank (litre)	2x 1500
Fuel daytank (litre)	1x 500
Freshwater tank (litre)	1x1000
Wheel steering	hydraulic



Inside helm position	yes
Flybridge helm position	
Extra info	Curtains (2020)

ACCOMMODATION

Cabins	3
Berths	6
Crew cabin	yes
Interior	
Aft deck	yes
Saloon	yes
Headroom saloon (m)	2 +/-
Heating	diesel ducted hot air Wallas 40DT
Dinette	yes
Sliding door to aft deck	yes
Galley	yes
Countertop	granite
Sink	stainless steel
Cooker	induction Schott Ceran
Extractor	yes
Microwave	Samsung
Fridge	1x new 2020 and 1 original
Hot water system	220V
Water pressure system	electrical
Ice maker	yes
Owners cabin	double bed Matras 2020
Wardrobe	hanging/drawers/shelves
Bathroom	en suite
Toilet	en suite
Toilet system	electric
Wash basin	in the bathroom



Shower	en suite
Guest cabin 1	twin single
Wardrobe	hanging and drawers
Bathroom	en suite
Toilet	en suite
Toilet system	electric
Wash basin	in the bathroom
Shower	en suite
Guest cabin 2	twin single
Wardrobe	hanging and drawers
Bathroom	en suite
Toilet	en suite
Toilet system	electric
Wash basin	in the bathroom
Shower	en suite

MACHINERY

No of engines	2
Make	MAN
HP	820
kW	602,70
Fuel	diesel
Maximum speed (kn)	26
Cruising speed (kn)	8
Engine hours	1198
Engine cooling system	freshwater heat exchanger
Drive	shaft
Gearbox	hydraulic
Bowthruster	electric Vetus
Exhaust	watercooled
Propeller blades	2019



Electric bilge pump	yes
Generator	15Kva
Batteries	yes
Start battery	2x
Service battery	4x
Generator battery	1x
Bowthruster battery	4x
Battery charger	Mastervolt 24/100
Inverter	Mastervolt
Shorepower	with cable
Trimtabs	yes
Extra info	1000 enginehours service is done
Extra info	Normal engine maintainance is done
Extra info	Seperated charger for generator and bowthruster

NAVIGATION

Compass	yes
Compass on flybridge	yes
Depth sounder/log	Raymarine 2019
VHF	Icom IC-M603
Autopilot	yes
Rudder angle indicator	yes
Plotter	Raymarine 2019
AIS receiver	2019
Camera	2019
Searchlight	yes

EQUIPMENT

Cockpit cover	2020
Window cover	yes
Cockpit cushions	2020



Cockpit table	yes
Cockpit chairs	yes
Bathing platform	yes
Boarding ladder	stainless steel
Gangway	Besonzi
Deck shower	Hot and cold
Anchor	Delta
Anchor chain	50m
Windlass	electrical Lofrans
Deck wash	yes
Sea railing	stainless steel
Grab rail (superstructure)	stainless steel
Life raft	2x
Wiper	yes
Horn	
TV	yes
Radio	Fushion system



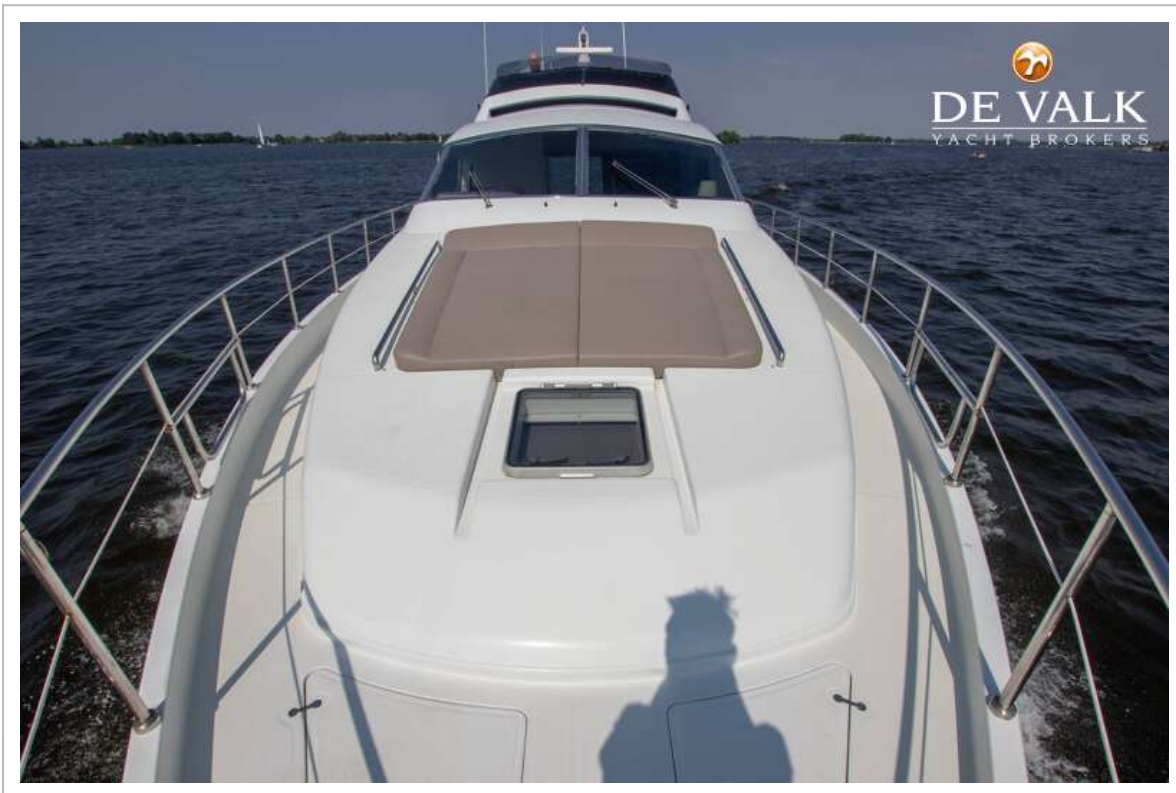


MOCHI 56

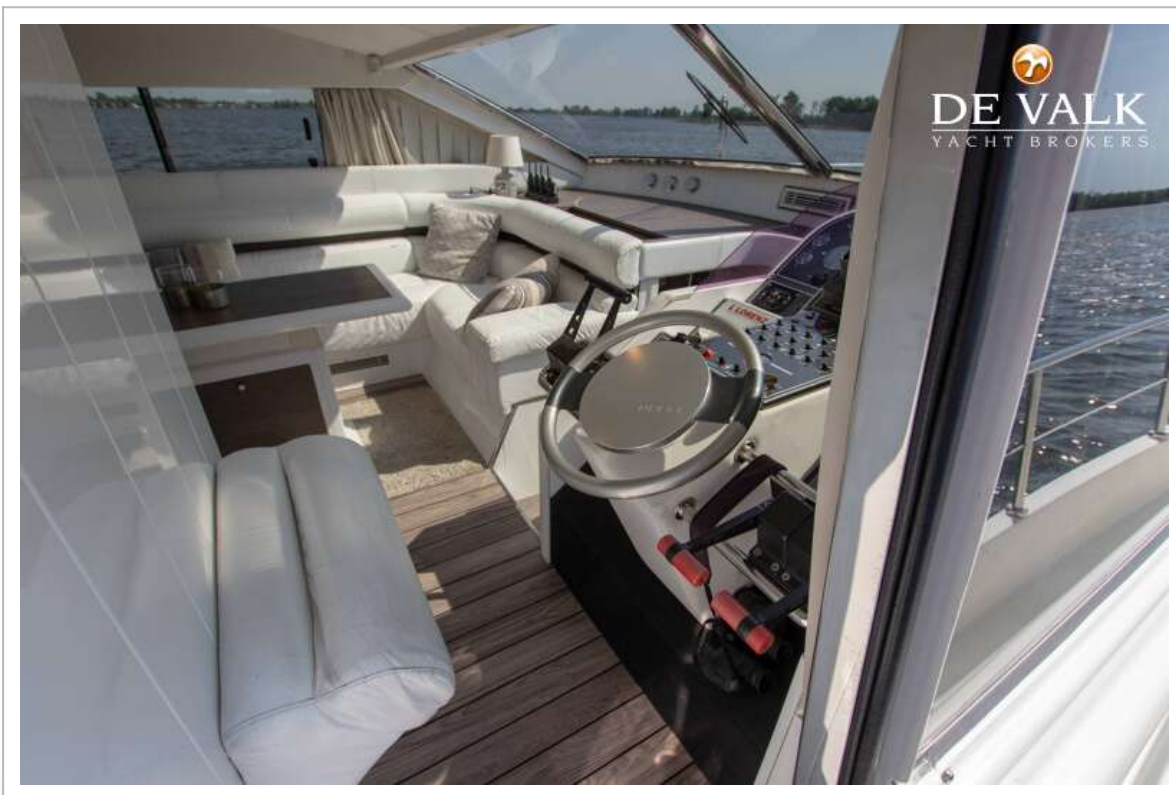




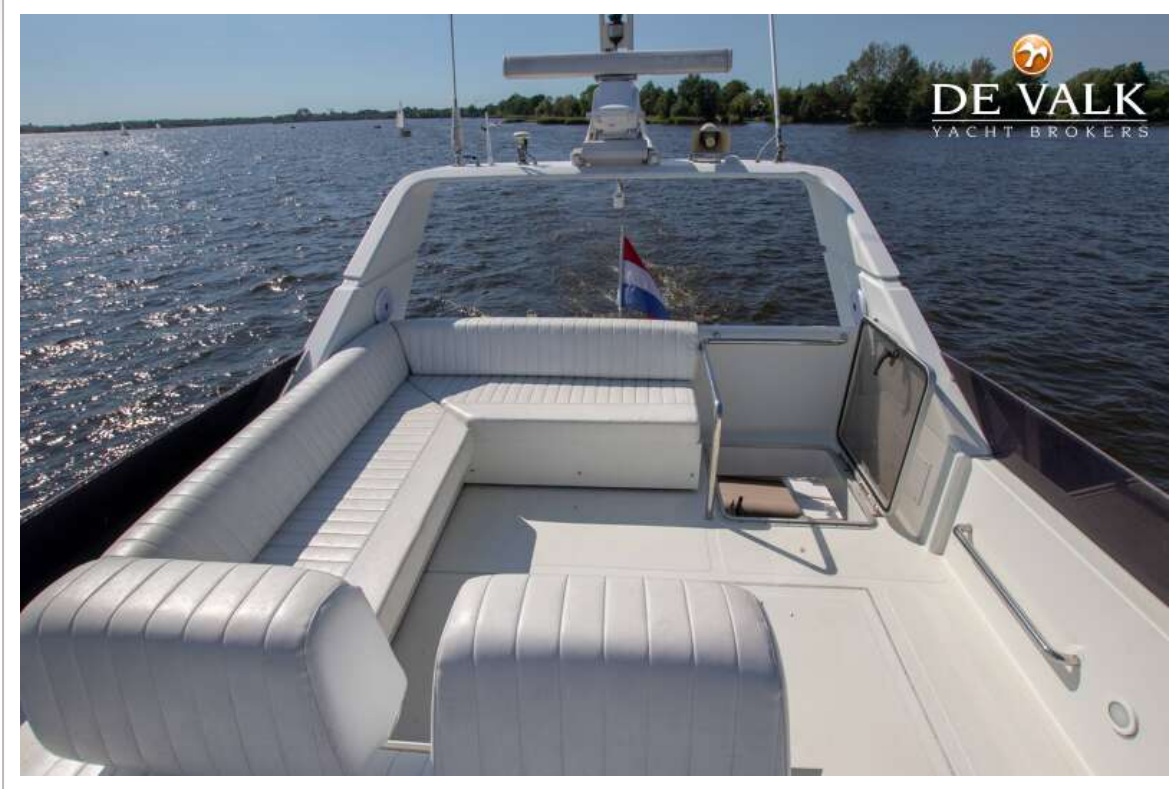
MOCHI 56



MOCHI 56



MOCHI 56



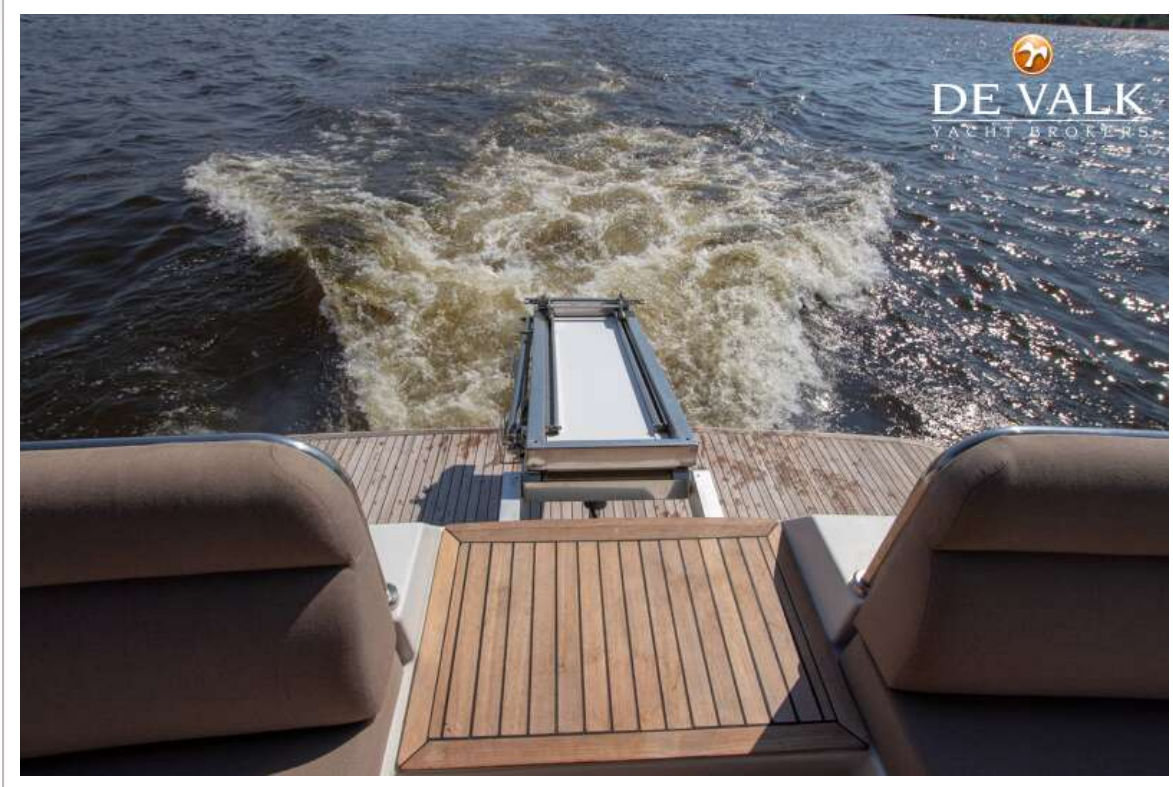
MOCHI 56



MOCHI 56

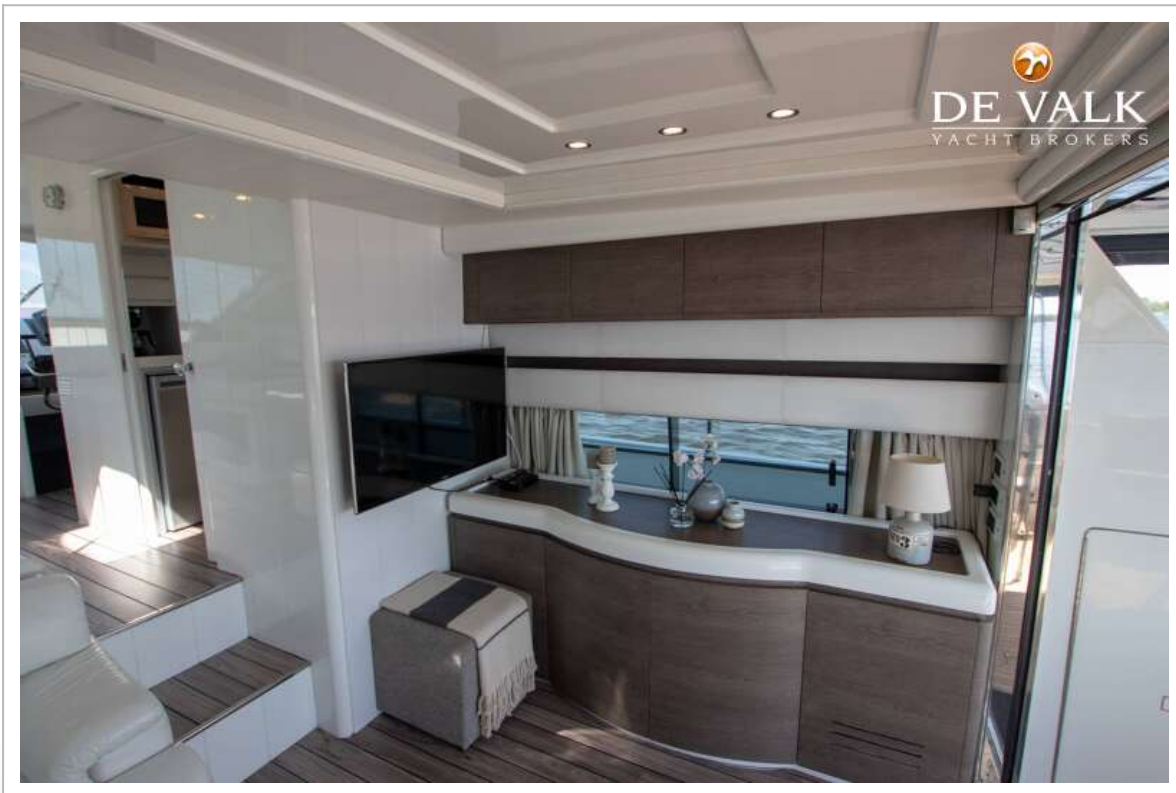


MOCHI 56



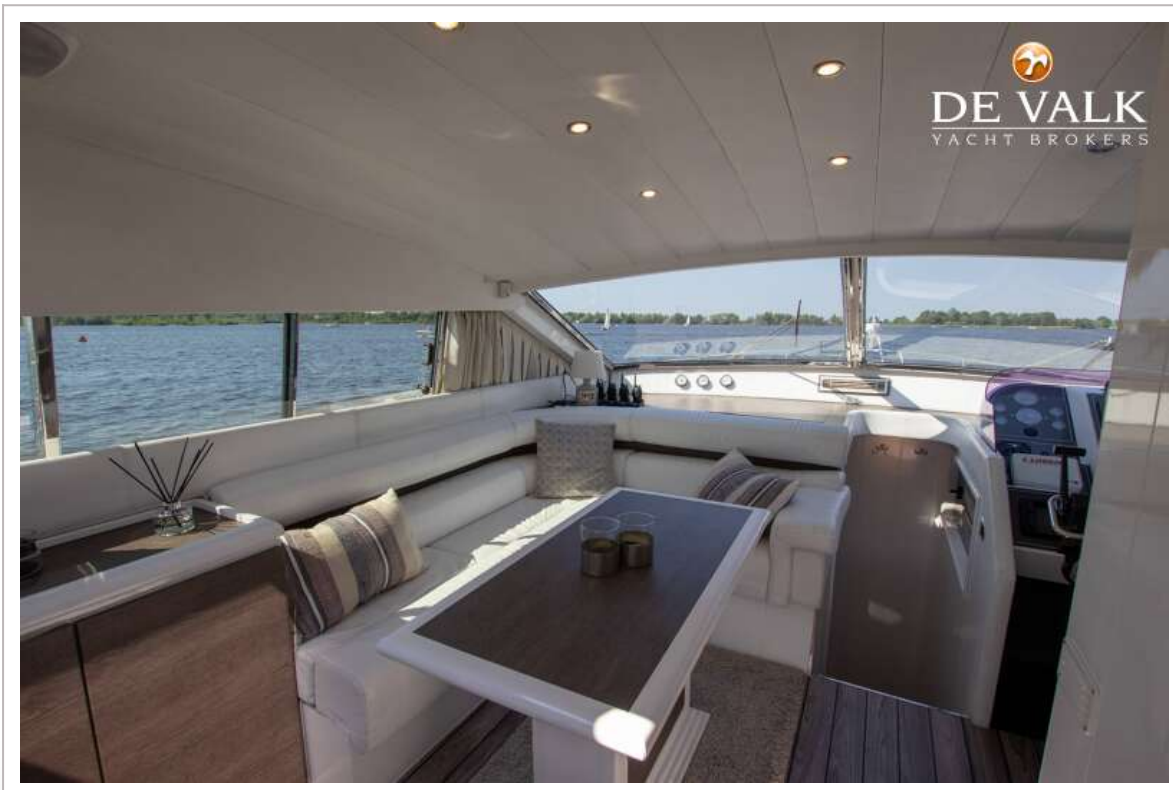


MOCHI 56





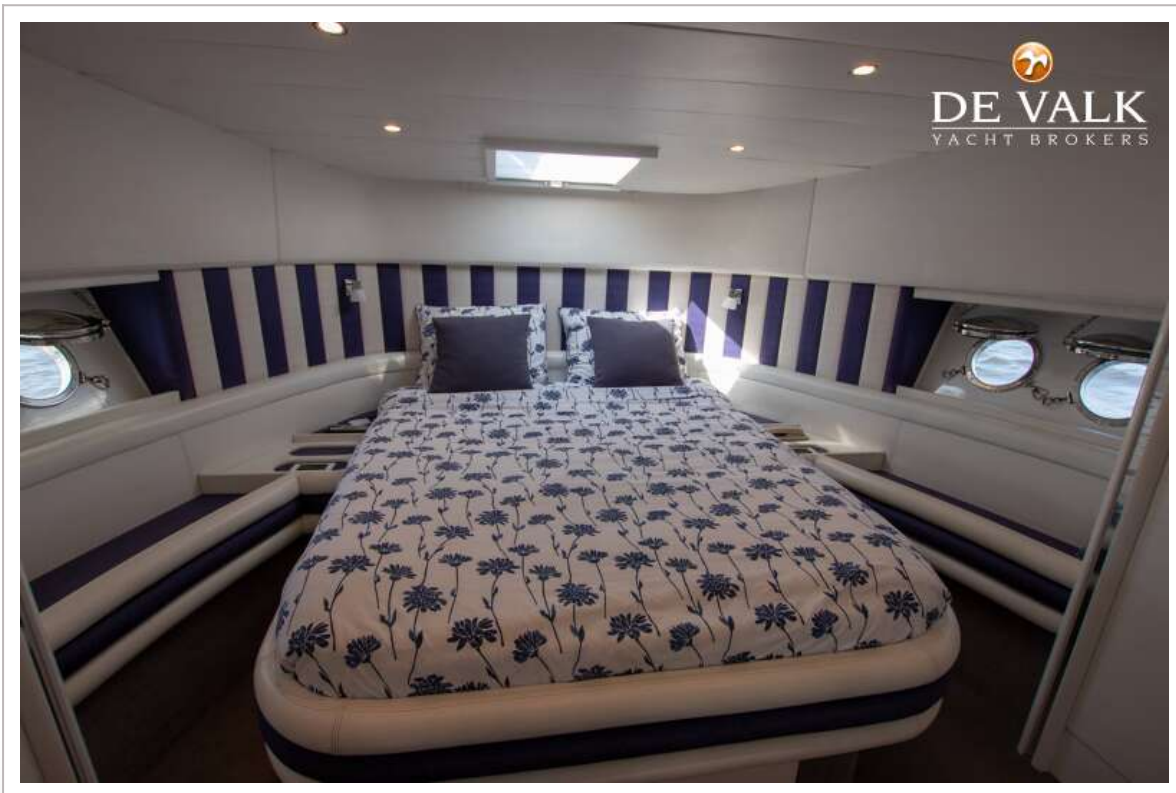
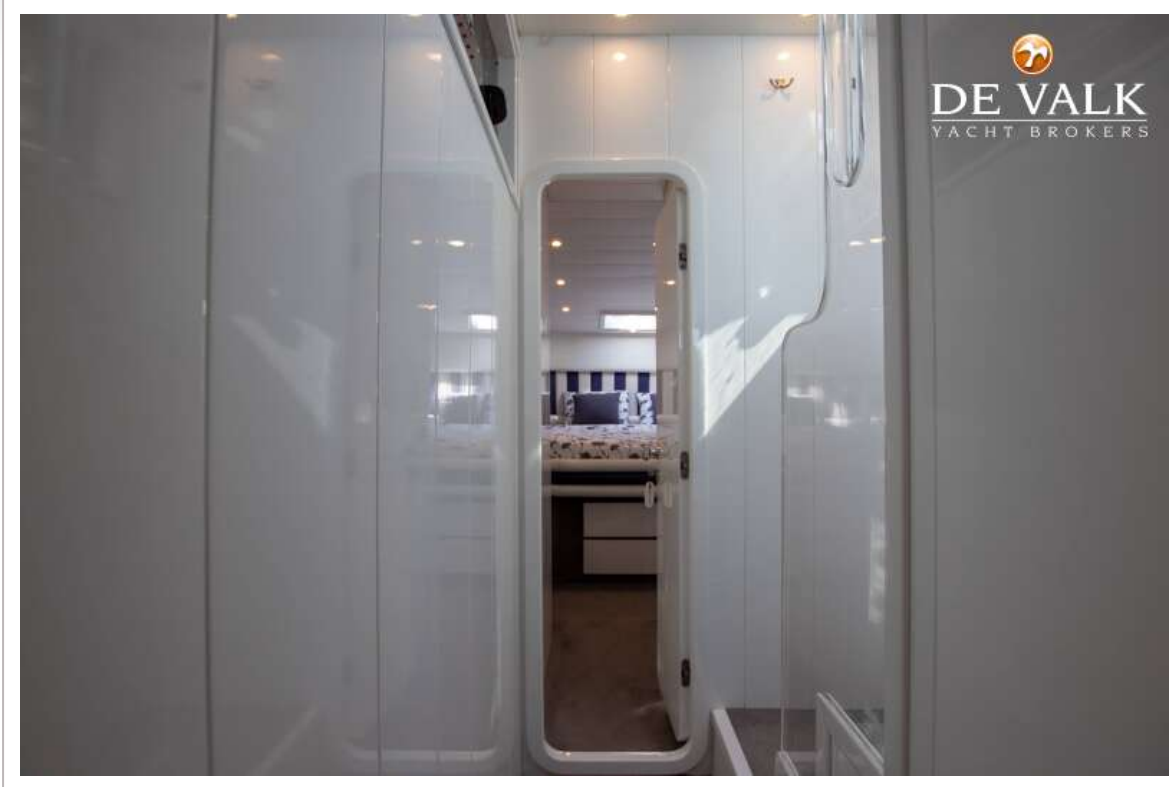
MOCHI 56



MOCHI 56

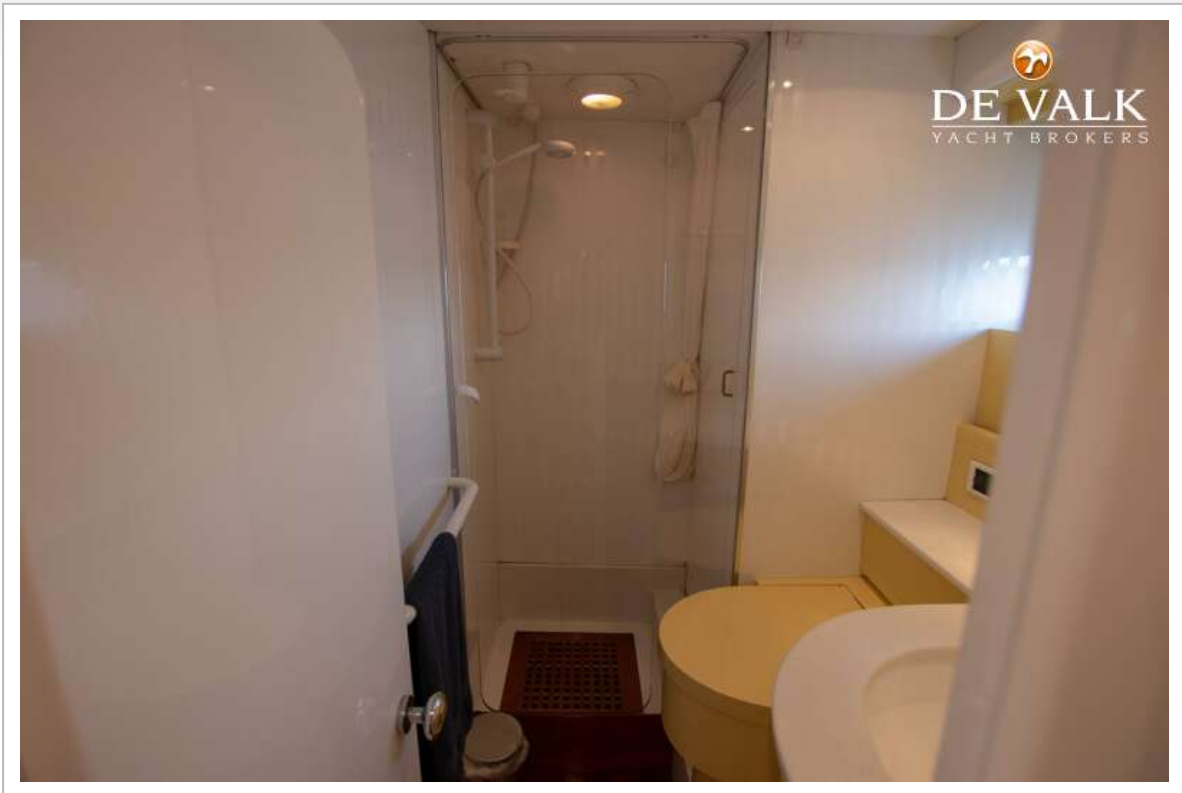














MOCHI 56

