



HATTERAS 45 CONVERTIBLE



HATTERAS 45 CONVERTIBLE

BROKER'S COMMENTS

Hatteras 45 C is a tough, sturdy, very good sailing semi displacement motor yacht. Equipped with spacious, well-arranged seats on the fly bridge from which everything can be operated. A spacious cockpit below, with a low free board so that you can easily step on board, both from the side and from behind through the transom opening. Well maintained for many years and owned by the 2nd owner, hull/deck/superstructure and fly bridge look very neat. The interior is nice and in the original condition. Located in southwestern part of The Netherlands, she can be viewed by appointment.

Ger Bayens

SPECIFICATIONS

Dimensions	13.84 x 4.42 x 1.10 (m)	Builder	Hatteras
Built	1989	Cabins	2
Material	GRP	Berths	6
Engine(s)	2 x Detroit 6V92TA diesel	Hp/Kw	2 x 550.00 (hp), 404.25 (kw)
Asking price	sold (VAT)	Lying	elsewhere / Not at sales office

CONTACT

Sales office	De Valk Thuishaven	Telephone	+31 35 5829042
Address	Peperstraat 7 1411 PX Naarden NL	E-mail	thuishaven@devalk.nl

DISCLAIMER

These particulars are given in good faith as supplied but cannot be guaranteed.



HATTERAS 45 CONVERTIBLE

GENERAL

Model	HATTERAS 45 CONVERTIBLE
Type	motor yacht
LOA (m)	13,84
Beam (m)	4,42
Draft (m)	1,10
Headroom (m)	1,98
Year built	1989
Builder	Hatteras
Country	U.S.A.
Displacement (t)	12
CE norm	NA
Hull material	GRP
Hull colour	white
Hull shape	Fast Displacement Hull
Superstructure material	GRP
Rubbing strake	stainless steel
Deck material	GRP
Deck finish	non-skid paint
Superstructure deck finish	paint
Cockpit deck finish	non-skid paint
Antifouling (year)	July 2021
Window frame	aluminium
Window material	tempered glass
Deckhatch	yes
Portholes	
Flybridge	yes
Flybridge cockpit cover	yes
Flybridge suncover	yes
Fuel tank (litre)	GRP 2300 in 2 tanks
Freshwater tank (litre)	GRP 500



HATTERAS 45 CONVERTIBLE

Level indicator (freshwater)	yes
Blackwater tank (litre)	
Blackwater tank extraction	deck extraction + uw line
Flybridge helm position	hydraulic
More info on paintwork	hull, deck, superstructure and cockpit in 2-comp DD-Paint (2009)

ACCOMMODATION

Cabins	2
Berths	6
Interior	mahogany
Layout	salon, galley, owners cabin with bathroom, guest cabin, bathroom
Floor	carpet
Open cockpit	yes
Saloon	yes
Headroom saloon (m)	1,98
Air-conditioning	To be checked
Navigation center	at fly bridge
Chart table	at fly bridge
Convertible berth	in the saloon
Opening door to cockpit	yes
Countertop	plastic
Sink	stainless steel
Cooker	electric
Oven	yes
Microwave/oven combi	220V
Fridge	inside /outside
Hot water system	220V
Water pressure system	
Ice maker	yes
Owners cabin	French bed



HATTERAS 45 CONVERTIBLE

Bed length (m)	1,97 x 1,45
Wardrobe	hanging/drawers/shelves
Bathroom	en suite
Toilet	en suite
Toilet system	vacuum
Wash basin	in the bathroom
Shower	en suite
Guest cabin 1	bunk bed
Bed length (m)	1,98 x 0,80 / 1,92 x 1,00
Wardrobe	hanging/drawers/shelves
Bathroom	shared
Toilet	shared
Toilet system	vacuum
Wash basin	in the bathroom
Shower	shared

MACHINERY

No of engines	2
Make	Detroit
Type	6V92TA
HP	550
kW	404,25
Fuel	diesel
Year installed	1989
Maximum speed (kn)	20
Cruising speed (kn)	8
Engine cooling system	freshwater heat exchanger
Drive	shaft
Shaft seal	stuffing box
Engine controls	bowden cable
Gearbox	hydraulic



HATTERAS 45 CONVERTIBLE

Bowthruster	electric (2009)
Thrust bearing	yes
Propeller type	fixed
Propeller blades	4
Propeller shaft material	stainless steel
Shaft lubrication	water
Electric bilge pump	3x
Generator	wet exhaust Onan 15.0 Marine Genset 15KvA
Running hours generator	696
Batteries	yes
Start battery	2x
Service battery	4x
Bowthruster battery	2x
Battery monitor	yes
Battery charger	Mastervolt 12/30 2x Mastervolt 12/80
Inverter	yes
Diode battery combiners	yes
Shorepower	with cable
Trimtabs	renewed into stainless steel

NAVIGATION

Compass on flybridge	Plastimo Offshore 95 (2021)
Electric compass	at auto pilot
Depth sounder	Navman Trackfish 6500
VHF	NAVMAN VHF 7100
Autopilot	Robertson AP 35
Rudder angle indicator	(2021)
Plotter/GPS	Garmin

EQUIPMENT

Fixed windscreen	yes
------------------	-----



HATTERAS 45 CONVERTIBLE

Bimini	at the Fly-bridge
Cockpit cushions	at the Fly-bridge
Cockpit chairs	at the Fly-bridge
Bathing platform	yes
Boarding ladder	stainless steel
Transom door	yes
Gangway	with remote control Besenzoni
Anchor	Bruce
Anchor chain	yes
Windlass	electrical Lowfrance Tigres 12v/1000W
Capstan	Lowfrance Tigres 12v/1000W
Deck wash	yes
Sea railing	stainless steel
Grab rail (superstructure)	stainless steel
Pulpit	yes
Life raft (pers)	container Neptune 6
Last life raft survey	2017
Lifejackets	yes
Lifebuoy	yes
Horn	
Fenders	yes
Mooring lines	yes
TV	yes
Radio-cd player	Pioneer
Cockpit speakers	at Fly-bridge
Speakers in salon	yes
Clock - barometer	yes
Fire extinguisher	yes
Latest extinguisher survey	Expired



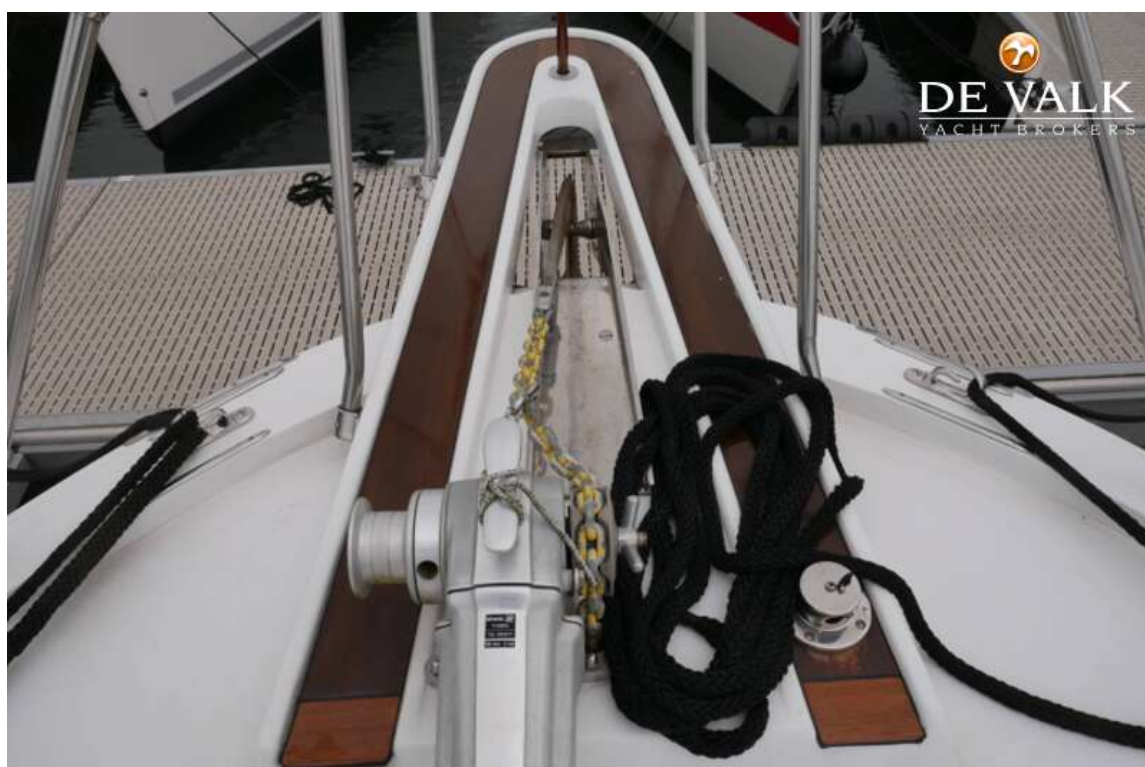
HATTERAS 45 CONVERTIBLE



HATTERAS 45 CONVERTIBLE



HATTERAS 45 CONVERTIBLE



HATTERAS 45 CONVERTIBLE



HATTERAS 45 CONVERTIBLE



HATTERAS 45 CONVERTIBLE



HATTERAS 45 CONVERTIBLE



HATTERAS 45 CONVERTIBLE



HATTERAS 45 CONVERTIBLE



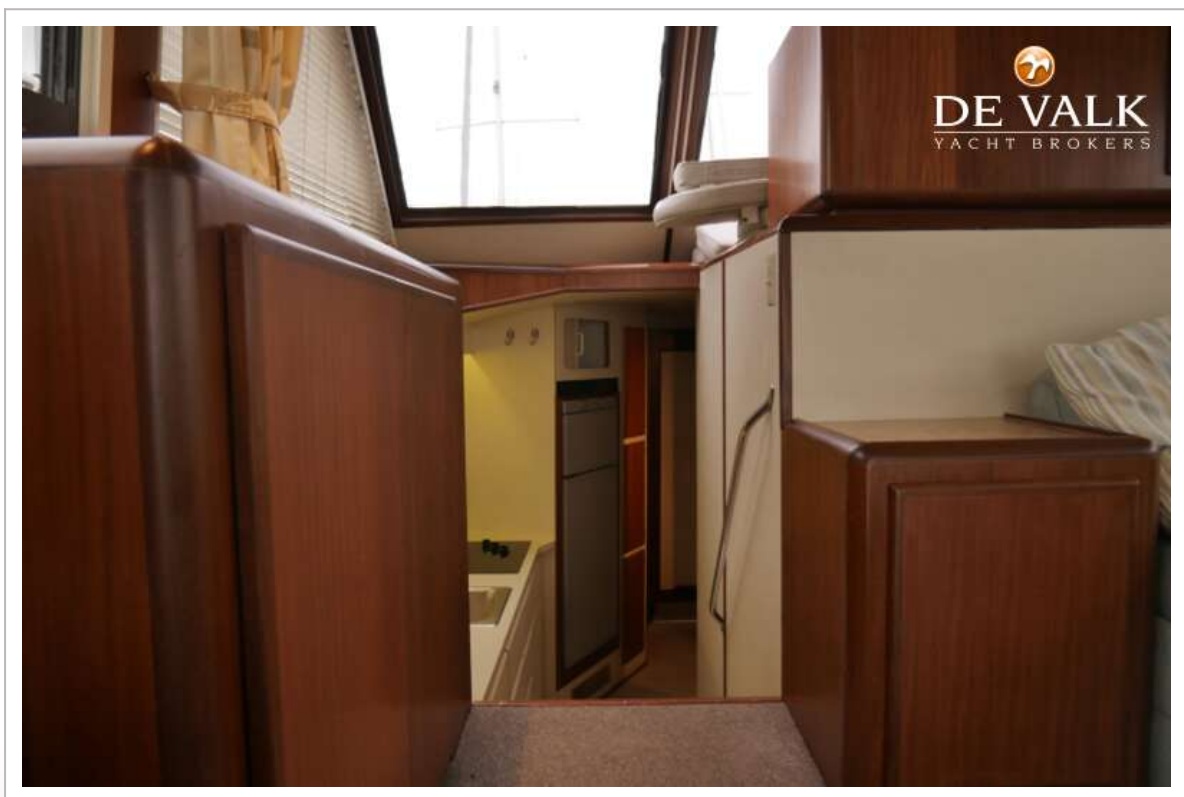
HATTERAS 45 CONVERTIBLE



HATTERAS 45 CONVERTIBLE



HATTERAS 45 CONVERTIBLE



HATTERAS 45 CONVERTIBLE



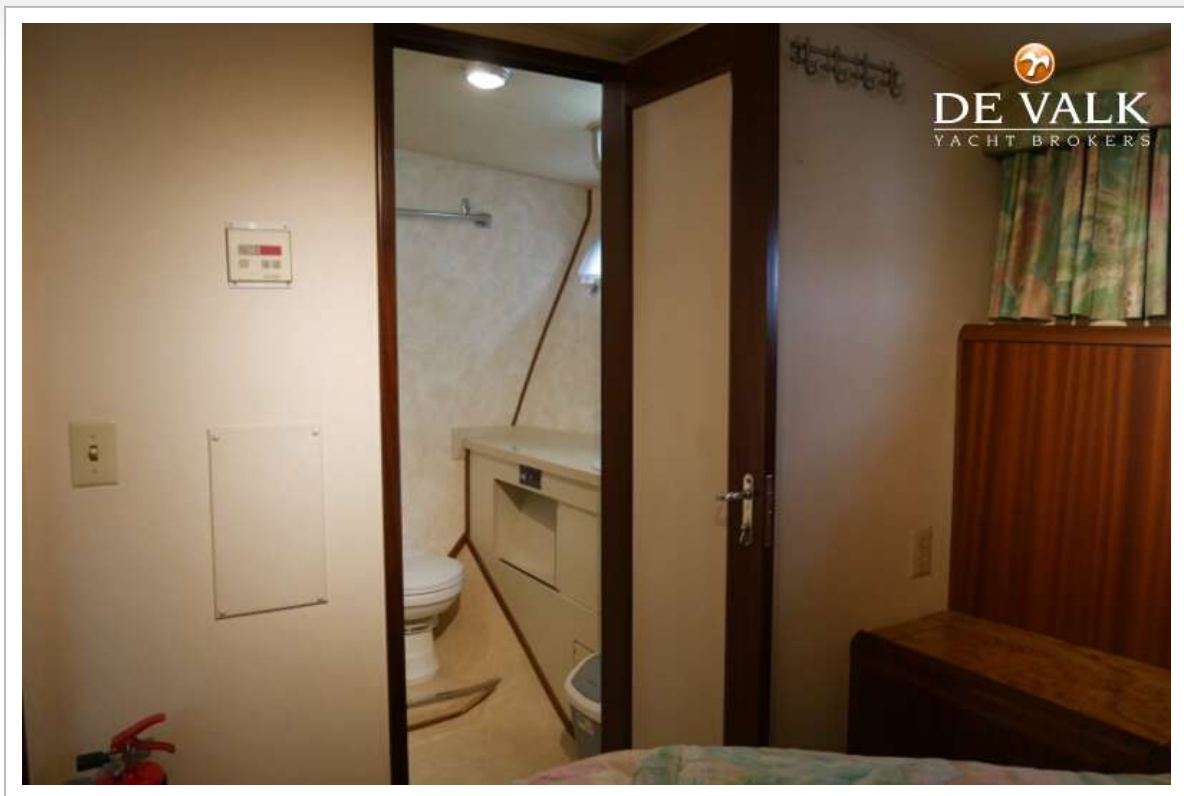
HATTERAS 45 CONVERTIBLE



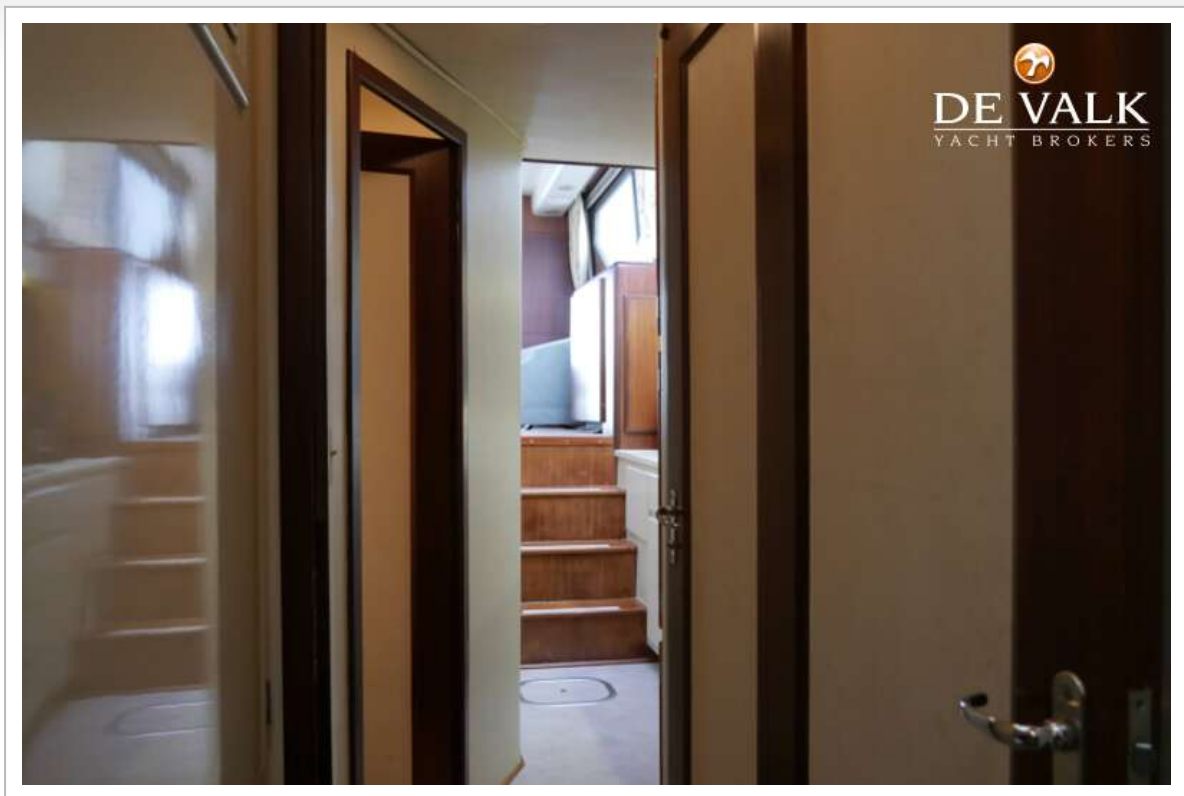
HATTERAS 45 CONVERTIBLE



HATTERAS 45 CONVERTIBLE



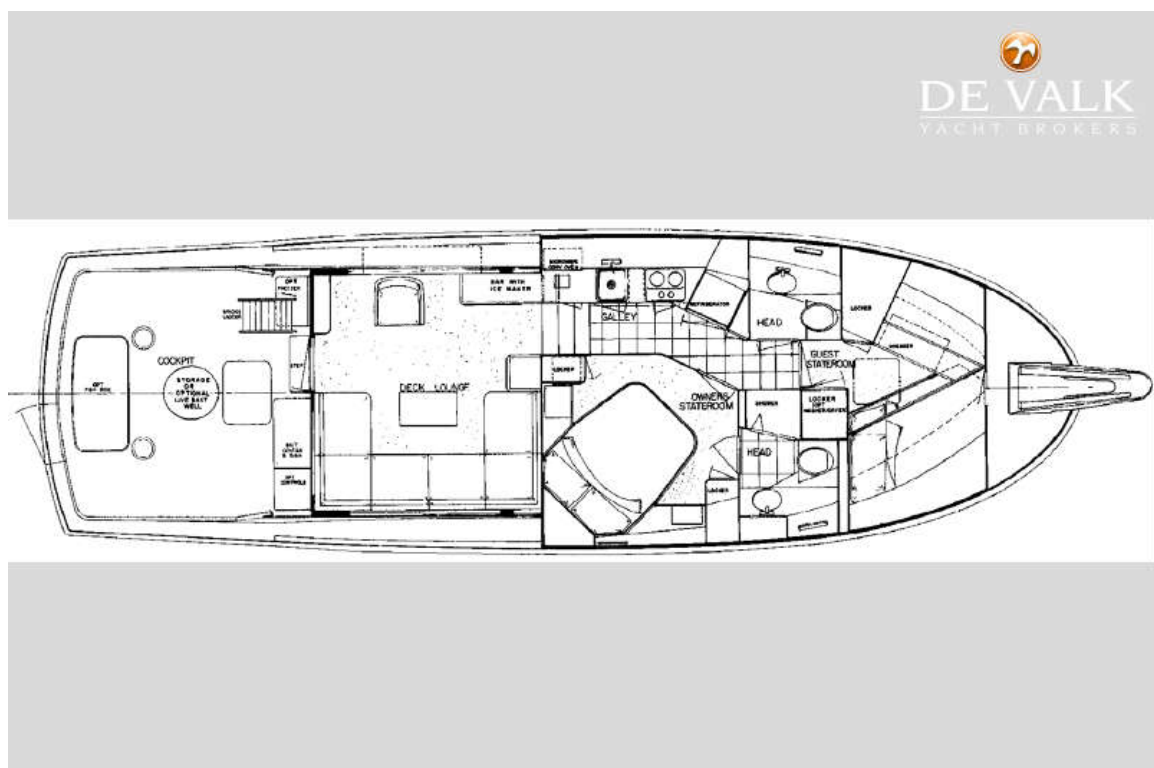
HATTERAS 45 CONVERTIBLE



HATTERAS 45 CONVERTIBLE



HATTERAS 45 CONVERTIBLE



HATTERAS 45 CONVERTIBLE



HATTERAS 45 CONVERTIBLE



HATTERAS 45 CONVERTIBLE

