



DE VALK  
YACHT BROKERS



VAN DE STADT 44 LIFTING KEEL



DE VALK  
YACHT BROKERS

BROKERAGE | CHARTER | BERTHS | FINANCE | INSURANCE | YACHT MANAGEMENT

# VAN DE STADT 44 LIFTING KEEL

## BROKER'S COMMENTS

A true sailing and cruising machine from the hand of Satellite Yacht Design. Tyfoon is a well balanced yacht, stiff, strong and relatively lightweight hull. Built for the discerning sailor. A hydraulic lifting keel with 1.64 M. min. / 2.84 M. max draft which makes this yacht versatile and unique. Comfortable inland and blue water cruising, speed and even exploring the Arctic waters, you can do it all. Built with nothing less than high quality materials, study the details and you will notice an impressive list of brand new A1 equipment. She's in every aspect truly in a ready to go condition.

*Harald Padberg*

## SPECIFICATIONS

<b>Dimensions</b>	13.30 x 4.16 x 1,64 / 2.84 (m)	<b>Builder</b>	GCB Composietbouw
<b>Built</b>	2008	<b>Cabins</b>	2
<b>Material</b>	Epoxy and foam core	<b>Berths</b>	6
<b>Engine(s)</b>	1 x VW Marine SDi-4 diesel	<b>Hp/Kw</b>	60.00 (hp), 44.16 (kw)
<b>Asking price</b>	sold (VAT )	<b>Lying</b>	at sales office

## CONTACT

<b>Sales office</b>	De Valk Monnickendam B.V.	<b>Telephone</b>	+31 (0)299 65 63 50
<b>Address</b>	Hoogedijk 6 1145 PM Katwoude NL	<b>E-mail</b>	monnickendam@devalk.nl

## DISCLAIMER

These particulars are given in good faith as supplied but cannot be guaranteed.



# VAN DE STADT 44 LIFTING KEEL

## GENERAL

Model	VAN DE STADT 44 LIFTING KEEL
Type	sailing yacht
LOA (m)	13,30
Beam (m)	4,16
Draft (m)	2,84
Draft min (m)	1,64
Air draft (m)	23,00
Headroom (m)	2,15
Year built	2008
Launched	March 2009
Builder	GCB Composietbouw
Country	The Netherlands
Designer	<a href="http://www.yacht-design.nl">Www.yacht-design.nl</a> - Kees van de Stadt
Displacement (t)	9,4
Ballast (tonnes)	3,84
CE norm	NA
Hull material	epoxy and foam core
Hull colour	blue
Hull shape	round-bilged
Keel type	lifting keel
Superstructure material	composite
Deck material	composite
Deck finish	non-skid moulded in
Superstructure deck finish	non-skid moulded in
Cockpit deck finish	non-skid moulded in
Antifouling (year)	2021 - CopperCoat
Window material	polycarbonate
Deckhatch	4 X
Portholes	6 X
Insulation	foam



<b>Fuel tank (litre)</b>	epoxy - 300 L.
<b>Level indicator (fuel tank)</b>	Philippi P-BUS System Monitor - tank interface
<b>Freshwater tank (litre)</b>	epoxy - 600 L.
<b>Level indicator (freshwater)</b>	Philippi P-BUS System Monitor - tank interface
<b>Blackwater tank (litre)</b>	epoxy
<b>Level indicator (blackwater)</b>	Philippi P-BUS System Monitor - tank interface
<b>Wheel steering</b>	Jefa Steering system
<b>Emergency tiller</b>	yes
<b>More info on hull</b>	yes
<b>More info on paintwork</b>	2021 scraping & sanding of the entire hull under the waterline, new primer and applying new layers CopperCoat
<b>Extra info</b>	Hydraulic lifting keel - incl. manual override. Electronic pushbutton keel operation in cockpit. Twin balanced rudder. Performance: speeds of 16+ knots under sail have been clocked !!

## ACCOMMODATION

<b>Cabins</b>	2
<b>Berths</b>	6
<b>Interior</b>	beech
<b>Floor</b>	Esthec
<b>Headroom saloon (m)</b>	2,15 meter
<b>Heating</b>	central hot water - Eberspächer
<b>Navigation center</b>	yes
<b>Chart table</b>	yes
<b>Dinette</b>	yes
<b>Galley</b>	with SoftMotion closing drawers
<b>Countertop</b>	Duropol
<b>Sink</b>	stainless steel
<b>Cooker</b>	Force 10
<b>Oven</b>	Force 10
<b>Fridge</b>	Waeco Coolmatic CB-040 + Waeco Coolmatic RSD-115



# VAN DE STADT 44 LIFTING KEEL

Hot water system	on central heating
Water pressure system	electrical
Owners cabin	v-bed
Bed length (m)	2.00 meter
Wardrobe	hanging and shelves
Bathroom	en suite
Wash basin	in the bathroom En suite
Shower	en suite
Guest cabin 1	double bed
Bed length (m)	2.05 meter
Wardrobe	hanging and shelves
Toilet	shared
Toilet system	manual
Extra info	Starboard and portside benches can be used as a berth. Owners and aft cabin mattresses with Viva Clip spring/ventilation system.

Extra info	In 2022 indirect LED lighting installed in the floor + LED lighting in the salon + cabins. Reading lamps with USB connector. Indirect lighting can also be illuminated with remote control in all colours.
------------	--

Extra info	Calor gas system (pipes, hoses, fittings, etc.) new installed in 2022 - (system was not present).
------------	---

Extra info	New toilet and hoses in 2021.
------------	-------------------------------

Extra info	In 2021 a complete new hot water system installed + new taps in kitchen, shower and toilet room + installation of deck shower.
------------	--

Extra info	Nautic Boiler 1200W - 40 Liter for warm water; new in 2021. Eberspächer heating new in 2021. Warm water central heating system controlled via thermostat. Independent system, not engine dependent.
------------	---

## MACHINERY

No of engines	1
Make	VW Marine
Type	SDi-4



# VAN DE STADT 44 LIFTING KEEL

HP	60
kW	44.16
Fuel	diesel
Maximum speed (kn)	9,5
Cruising speed (kn)	7
Engine hours	602
Engine cooling system	freshwater heat exchanger
Drive	sail-drive
Saildrive seal	yes
Engine controls	bowden cable - Spinlock handle
Gearbox	hydraulic
Propeller type	folding - Gori overdrive
Propeller blades	3
Manual bilge pump	yes
Electric bilge pump	yes
Electrical installation	12/24/220 V system; new in 2022. Throughout the boat 220V via the inverter. All batteries are connected and equipped with charge controllers, all can be switched on or off. The engine can also be started via the service battery. Automatic main switches in front of each battery bank. Whole system is equipped with automatic fuses.
Start battery	1 x Optima Red Top
Service battery	4 x 75 Ah AGM 24v + 1 x 210 Ah Gel 12v - all new 2021
Windlass battery	and for future bow thruster: 2 X 105 Ah AGM - new 2021
Battery monitor	Philippi P-BUS System Monitor PSM 2 + Suder RCC-02 Remote Control
Battery charger/inverter	Studer Xtender XTH 5000-24 + Studer Xtender XTH 5000-24 + Victron Orion 24/12-70A non isolated DC/DC + Victron Energy Lynx Distributor + CTEK Multi XS 7000
Shorepower	with cable
Extra info	Electrical wiring for installation of bow thruster installed 2022
Extra info	Gori prop overhauled in 2021, new Zinc anodes 2021 and engine service in 2022



## NAVIGATION

Electric compass	yes
Multi control display	Exterior navigation "mirrored" with interior.
Depth sounder/log	yes
Windset	Garmin - new in 2021
VHF	Garmin VHF 215 + AIS inside and Garmin GHS 11i, incl. AIS handset outside - both new 2022
VHF handheld	Garmin GHS 11i, incl. AIS - new 2022
Autopilot	Garmin GHC-20 display + JEFA - DU TS6 electronic transmission drive - new in 2021
Rudder angle indicator	yes
Radar	Garmin Fantom - new in 2021
Radar/GPS/plotter	Garmin GPSMAP 1222 PLUS - 12 inch - new 2022
Electronic chart(s)	Garmin Blue Charts Alborg/Amsterdam - new 2021
EPIRB	yes
Navigation lights	all LED - new in 2022
Extra info	New custom made Stainless Steel pedestal + Scanstrut helmpod installed in 2022.

## EQUIPMENT

Sprayhood	new in 2021
Deck shower	with warm and cold water - new in 2021
Anchor	Ultra 21 KG (46 LBS) 316 Stainless Steel ( 2022 )
Anchor chain	10 mm. Stainless Steel - new 2022
Windlass	electrical - Loftrans ( 2022 )
Sea railing	wire
Grab rail (superstructure)	teak
Railing side opening gates	2 X
Pushpit	yes
Pulpit	yes
Danbuoy	yes
Horn	electric



# VAN DE STADT 44 LIFTING KEEL

<b>Fenders</b>	yes
<b>Mooring lines</b>	yes
<b>TV</b>	Telefunken LCD multi display on swivel-arm. Connected with JVC multimedia player. Also to be used as navigation display. New 2022.
<b>Radio-cd player</b>	- DVD player JVC KW-V2550 DBT - 6,2" touch screen multimedia - new in 2022
<b>Speakers in salon</b>	2 X Fusion 60W - new in 2022
<b>Extra info</b>	LED cockpit lights (6 x), LED lights at steering pedestal + LED deck lights (2 x) in mast installed in 2022.





## Extra info

A brief description about the building process. The original owner and designer started from scratch. He wanted to have a yacht which had to be safe, light weighted, easy to handle (like a small open boat), capable of sailing shallow waters, had to have performance qualities and a spacious interior with comfort. During the designing and building process, original owner and designer consulted and collaborated with renowned professionals from various industries among which craftsmen from Fokker Aerospace, the professionals from Polyworx, which are specialists in building Composite / Core-Cell structures and of course several highly skilled specialists from the Dutch boating building industry. The hull requires almost no maintenance and there is no risk of rotting, delaminating or osmosis. Vacuum infusion method is used to build the hull instead of the hand lay-up, which can cause problems. This infusion method assures an extremely high quality and resin-fiber ratio. The inherently high strength and light weight make this material ideal for a performance cruising yacht. An added advantage is that the closed cell structure makes it air-tight and extremely suitable for vacuum infusion. High-density foam has been used in critical places in the hull and deck to enable an extreme strong mounting surface of the rails. This technique has also been used for deck - hull connection. Main rigging chain plates are mounted directly on reinforcements which assures no stretch on the through deck connection. Front and backstay chain plates are fabricated of extra wide laminated and multiple layers of carbon band. Forces are very well distributed over a large surface. Keel area / surrounding is a solid laminate. Inner and outer laminate come together to assure a bullet-proof structure. The keel box runs through this surface and is casted in reinforced epoxy, all the way up. This assures that the keel box is completely clamped-in and is much stronger compared to a bolted keel.

## RIGGING

### Rigging

fractional with backstays

### Standing rigging

Rod

### Brand mast

John mast

### Material mast

aluminium

### Spreaders

3 sets - angle 15°



<b>Reefing System</b>	quick-one-line-reefing
<b>Backstay adjuster</b>	hydraulic - Sailtec
<b>Boomvang</b>	mechanical and tackle
<b>Primary sheet winch</b>	2 X Andersen 46ST - 2 speed
<b>Secondary sheet winch</b>	2 X Andersen 58ST - 2 speed
<b>Multifunctional winches</b>	2 X Andersen 46ST - 2 speed
<b>Gennaker pole</b>	carbon
<b>Extra info</b>	<p>Mainsail: Gaastra Custom Axis Laminate with batten. Category: 3 Technora 60 m2. Full batten upgrade incl. battcars. Three reefing points. Laminated radiale corners, clew, tack and head. Control lines in leech and foot. Jib Gaastra High aspect Custom Axis Laminate with batten. Categorie: 2 Technora. 37 m2. Tray dacron UV protection. Laminated radiale corners. Control lines in leech and foot. Gaastra Gennaker 150 m2. Mainsail and Jib are of high quality can be used in light and heavy weather. Spinnaker also present. All sails are used very little.</p>
<b>Extra info</b>	<p>Mast en stays inspected in 2022. Harken Furl system MKIV Unit 3 - through deck operated from the cockpit. Inner forestay is available - never used. Two running backstays. Winches can be converted to electrical units. Deck blocks all Ronstan ballbearing and high quality. Ronstan tracks 30 series. Ronstan ball bearing travellers with control sheaves. Ronstan ball bearing sheave for sheets. Line clamps Spinlock.</p>



# VAN DE STADT 44 LIFTING KEEL





## VAN DE STADT 44 LIFTING KEEL



## VAN DE STADT 44 LIFTING KEEL





## VAN DE STADT 44 LIFTING KEEL



## VAN DE STADT 44 LIFTING KEEL



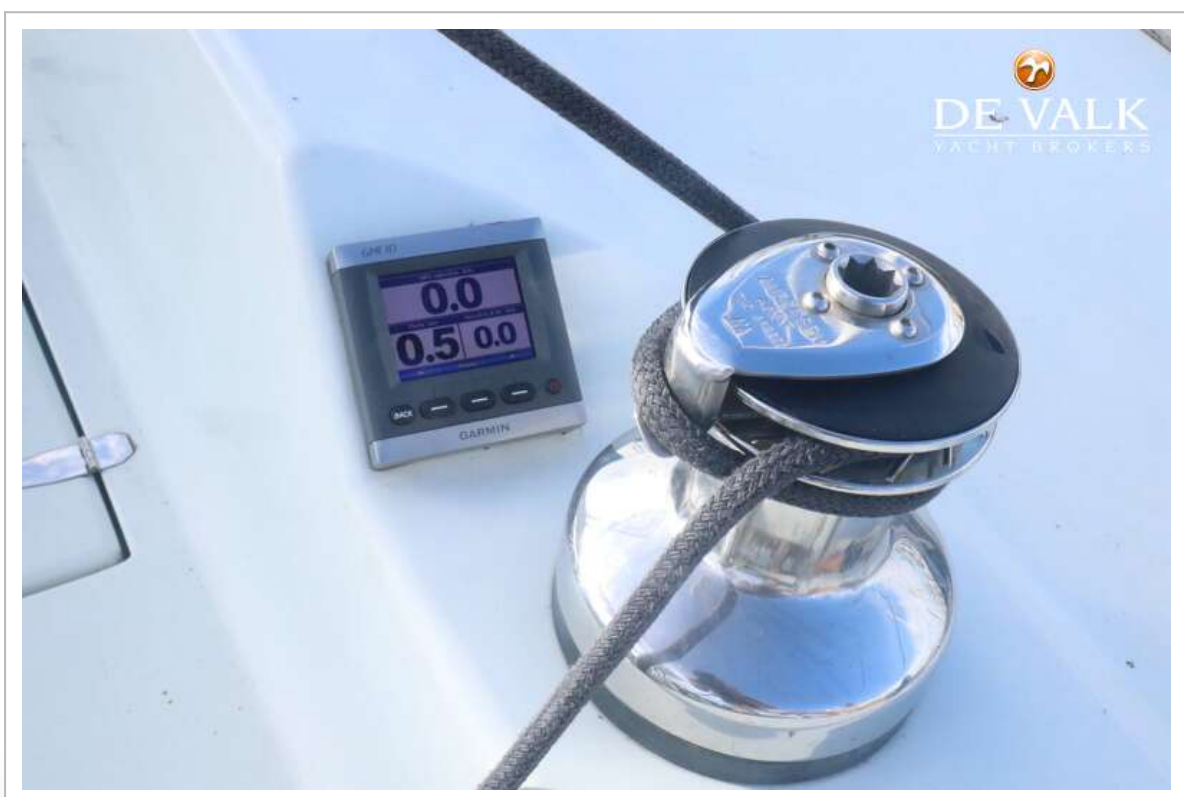


# VAN DE STADT 44 LIFTING KEEL





# VAN DE STADT 44 LIFTING KEEL



# VAN DE STADT 44 LIFTING KEEL





## VAN DE STADT 44 LIFTING KEEL



# VAN DE STADT 44 LIFTING KEEL





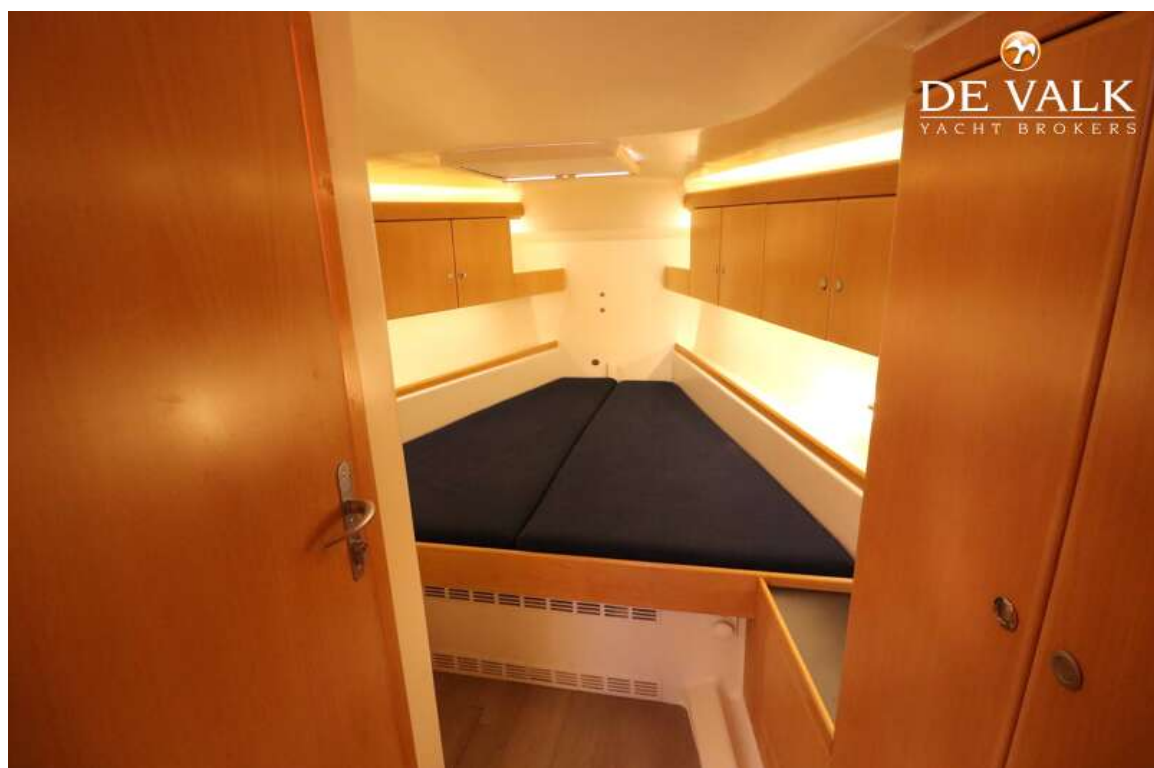
# VAN DE STADT 44 LIFTING KEEL



# VAN DE STADT 44 LIFTING KEEL

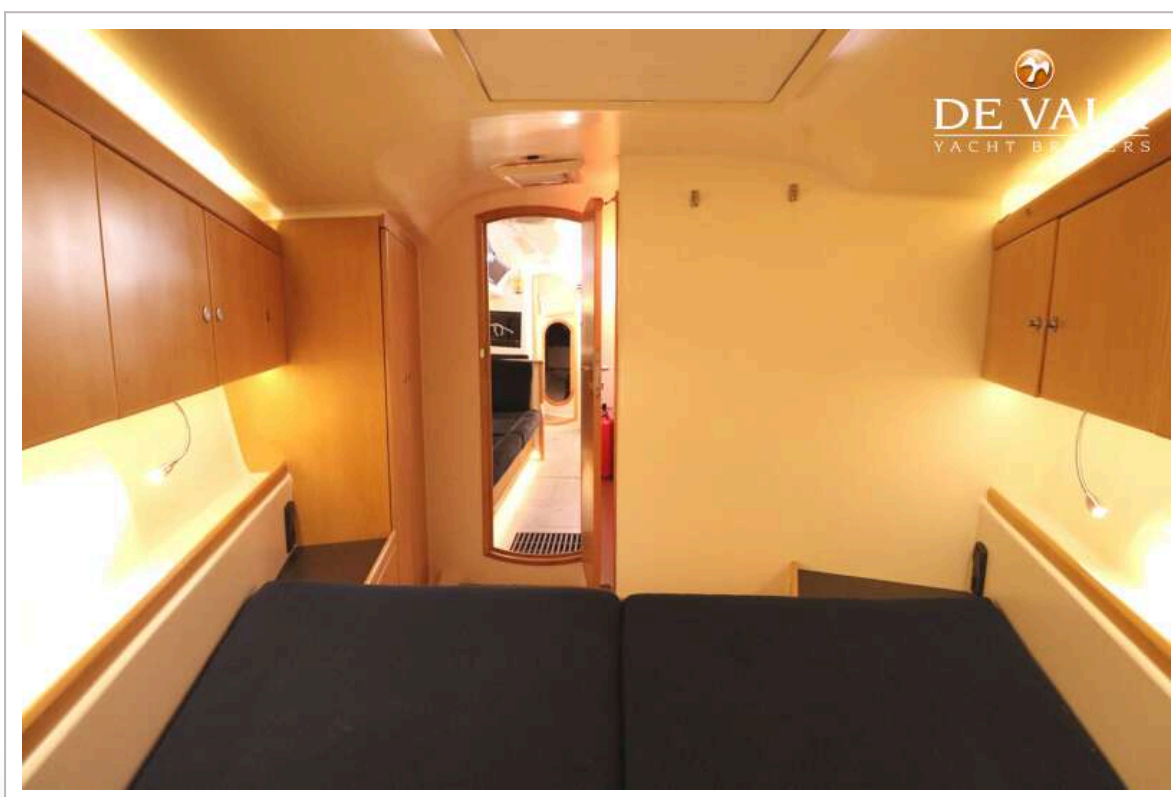


## VAN DE STADT 44 LIFTING KEEL



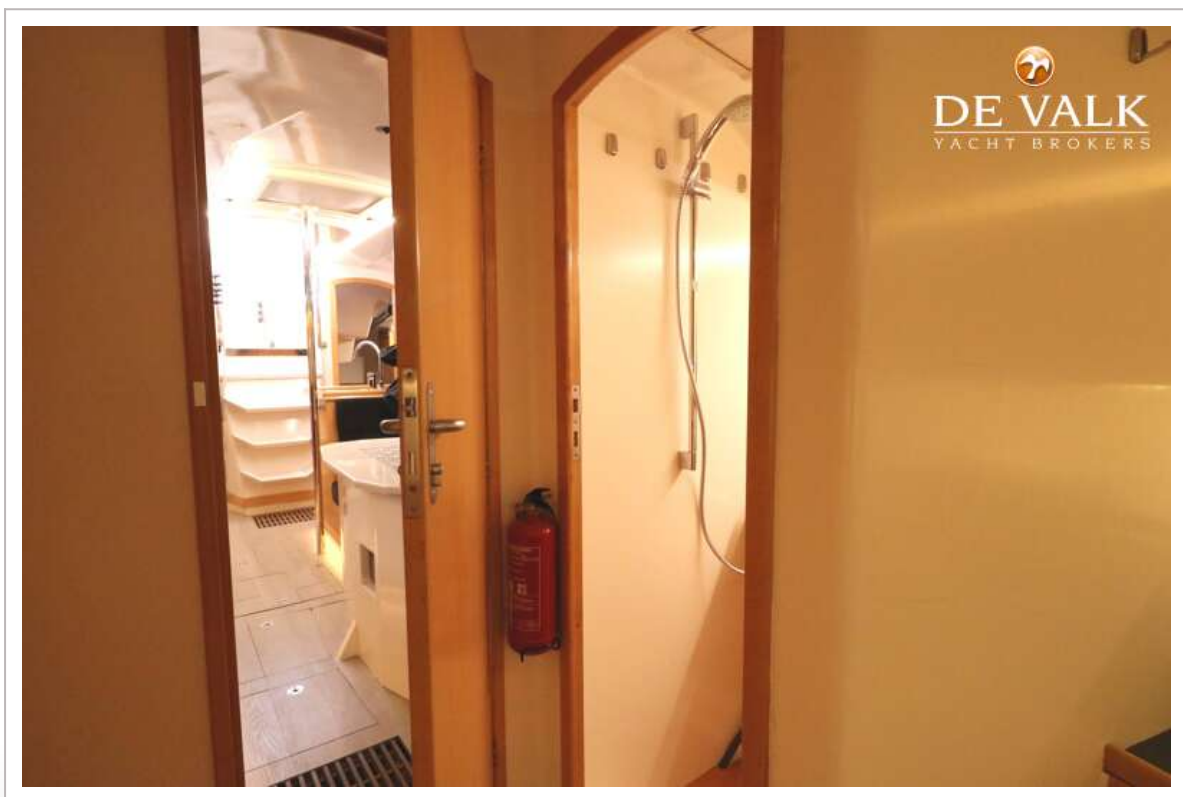


## VAN DE STADT 44 LIFTING KEEL





## VAN DE STADT 44 LIFTING KEEL



## VAN DE STADT 44 LIFTING KEEL



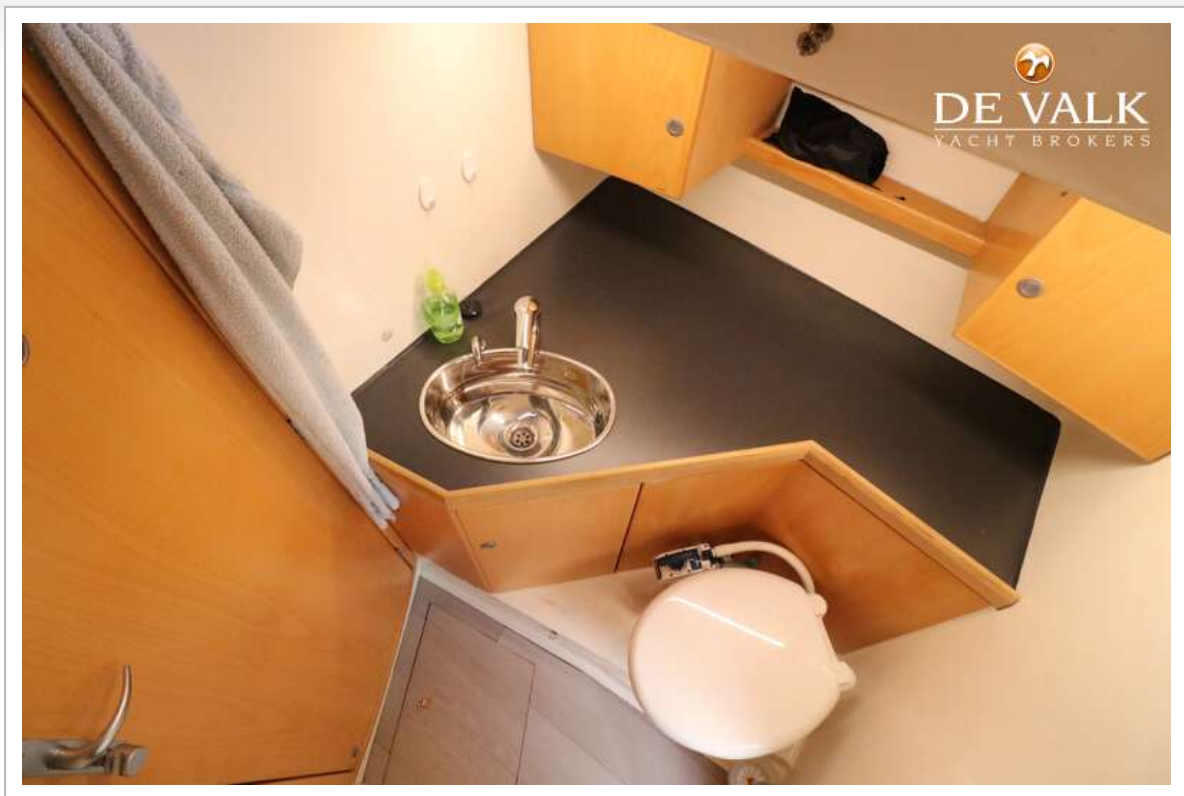
## VAN DE STADT 44 LIFTING KEEL





## VAN DE STADT 44 LIFTING KEEL







# VAN DE STADT 44 LIFTING KEEL

