



VRIPACK KOTTER 1500

VRIPACK KOTTER 1500

BROKER'S COMMENTS

Vripack Kotter 1500 "Ster der Zee" is built in 2005 by Jachtwerf 't Joppe. This long distance seagoing steel motor yacht is equipped for a long and comfortable stay on board. Equipped with one Perkins diesel engine, bowthruster, double glazed windows and Kabola central heating. Furthermore she is easily capable to cross the rough seas as well as to pass through the French Canals to visit the Mediterranean. Sold by the second owner!

Mark Hesselmans

SPECIFICATIONS

Dimensions	14.99 x 4.75 x 1.35 (m)	Builder	Jachtwerf 't Joppe
Built	2005	Cabins	3
Material	Steel	Berths	7
Engine(s)	1 x Perkins Sabre M225 diesel	Hp/Kw	225.00 (hp), 165.38 (kw)
Asking price	sold (VAT)	Lying	elsewhere / Not at sales office

CONTACT

Sales office	De Valk Loosdrecht B.V.	Telephone	+31 (0)35 582 90 30
Address	't Breukeleveense Meentje 6 1231LM Loosdrecht / Wijdmeren NL	E-mail	loosdrecht@devalk.nl

DISCLAIMER

These particulars are given in good faith as supplied but cannot be guaranteed.



GENERAL

Model	VRIPACK KOTTER 1500
Type	motor yacht
LOA (m)	14,99
Beam (m)	4,75
Draft (m)	1,35
Air draft (m)	3,25
Headroom (m)	2,00
Year built	2005
Builder	Jachtwerf 't Joppe
Country	The Netherlands
Designer	Vripack
Displacement (t)	32,2
CE norm	B
Hull material	steel
Hull colour	blue
Hull thickness (mm)	5
Hull shape	hard chine
Keel type	
Bilge keels	yes
Superstructure material	steel
Superstructure (mm)	4
Rubbing strake	stainless steel
Deck material	steel
Deck finish	synthetic teak
Superstructure deck finish	paint
Cockpit deck finish	synthetic teak
Antifouling (year)	2015
Window frame	aluminium
Window material	double glazing
Deckhatch	yes



Portholes	
Insulation	foam P4 fire-resistant
Radar arch	collapsible
Mast can be lowered	hydraulic Electric -
Fuel tank (litre)	steel
Level indicator (fuel tank)	Level sight glass
Freshwater tank (litre)	stainless steel
Level indicator (freshwater)	yes
Blackwater tank (litre)	polyethylene 2x
Level indicator (blackwater)	2x
Blackwater tank extraction	deck extraction + pump
Wheel steering	hydraulic
Inside helm position	yes
Outside helm position	
More info on paintwork	Painted in 2016

ACCOMMODATION

Cabins	3
Berths	7
Interior	teak
Layout	yes
Floor	teak Carpet and
Aft deck	yes
Saloon	yes
Headroom saloon (m)	2 +/-
Heating	central heating Kabola
Air-conditioning	Climma
Aft Cabin	yes
Dinette to convert into berth	yes
Opening door to aft deck	yes
Galley	yes



Countertop	corian
Sink	stainless steel
Cooker	electric
Extractor	yes
Microwave	yes
Fridge	yes
Freezer	yes
Hot water system	220V + engine
Water pressure system	electrical
Dishwasher	yes
Owners cabin	double bed
Bed length (m)	2 +/-
Wardrobe	hanging and drawers
Bathroom	en suite
Toilet	shared
Toilet system	electric
Wash basin	in the bathroom
Shower	en suite
Guest cabin 1	double bed + single bed
Bed length (m)	2 +/-
Wardrobe	hanging and drawers
Bathroom	shared
Toilet	shared
Toilet system	electric
Wash basin	in the bathroom
Shower	shared
Guest cabin 2	bunk bed
Bed length (m)	2 +/-
Wardrobe	hanging
Bathroom	shared
Toilet	shared
Toilet system	electric



Wash basin	in the bathroom
Shower	shared
Washing machine	yes
Dryer	yes

MACHINERY

No of engines	1
Make	Perkins Sabre
Type	M225
HP	225
kW	165,38
Fuel	diesel
Year installed	2003
Maximum speed (kn)	9
Cruising speed (kn)	7
Engine hours	2146
Engine cooling system	closed keelcooling
Drive	shaft
Engine controls	electrical
Gearbox	hydraulic Twin Disc. MG5050SG 3:1
Bowthruster	electric
Exhaust	dry
Propeller type	fixed
Propeller blades	4
Propeller shaft material	stainless steel
Shaft lubrication	water
Manual bilge pump	yes
Electric bilge pump	yes
Electrical installation	yes
Generator	dry exhaust
Running hours generator	1832



Batteries	yes
Start battery	2x Optima
Service battery	Tractieset 24V
Generator battery	1x Optima
Bowthruster battery	2x 230Ah Semitractie Maintenance Free
Battery monitor	Victron
Battery charger/inverter	2x Victron energy 24-3000-70
Shorepower	with cable 1 on the front and 1 on the back of the yacht
Insulation transformer	Victron Energy

NAVIGATION

Compass	Simrad IS15
Electric compass	Simrad IS15
Depth sounder/log	Simrad IS15
VHF	Simrad RS81
VHF handheld	Simrad HT50
Autopilot	Simrad AP25
Rudder angle indicator	Simrad IS15
Radar/GPS/plotter	Simrad CX54
Navigation lights	yes
Searchlight	yes

EQUIPMENT

Sun awning	yes
Cockpit cushions	yes
Cockpit chairs	yes
Bathing platform	yes
Boarding ladder	stainless steel
Deck shower	Hot and Cold
Anchor	Lofrance
Anchor chain	yes

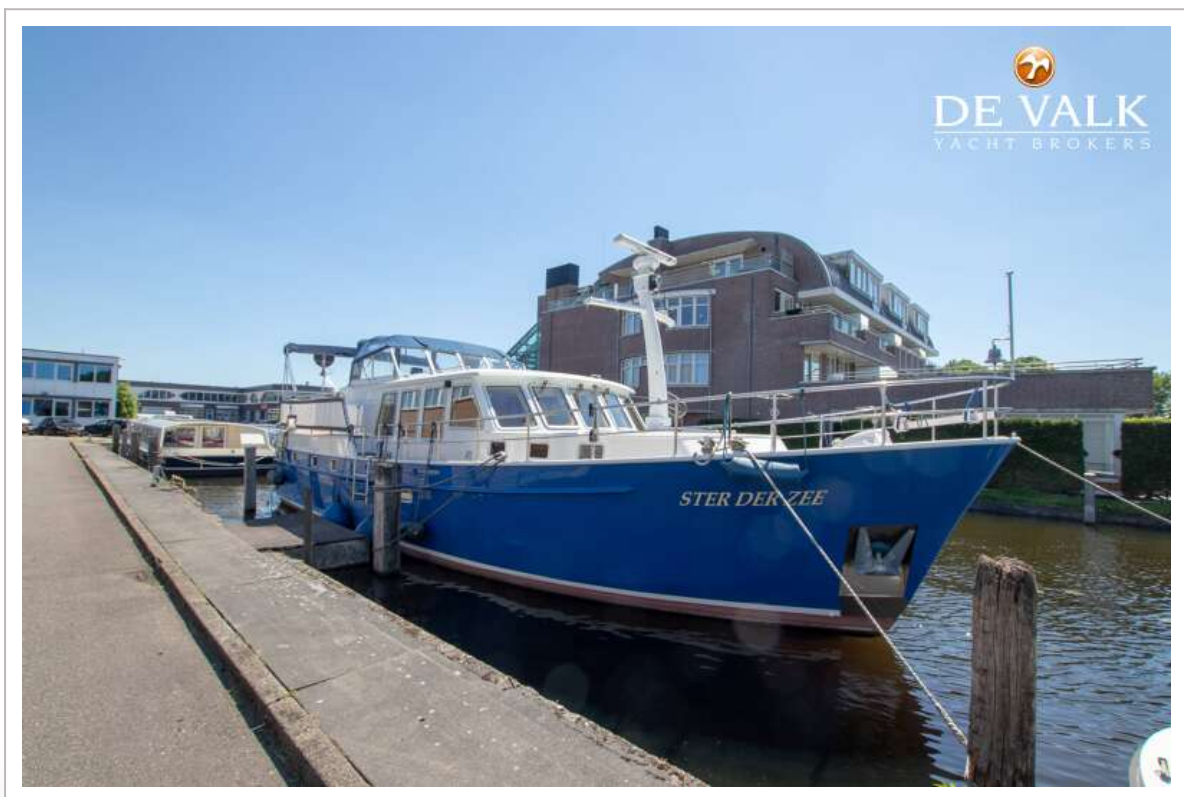


Windlass	electrical
Deck wash	yes
Dinghy	Lodestar
Outboard	4HP Yamaha 2 stroke
Davits	stainless steel
Davits controls	manual
Sea railing	stainless steel
Grab rail (superstructure)	stainless steel
Railing side opening gates	yes
Wiper	yes
Horn	
Radar reflector	yes
TV	yes
Radio-cd player	Sony
Auto extinguisher system	yes

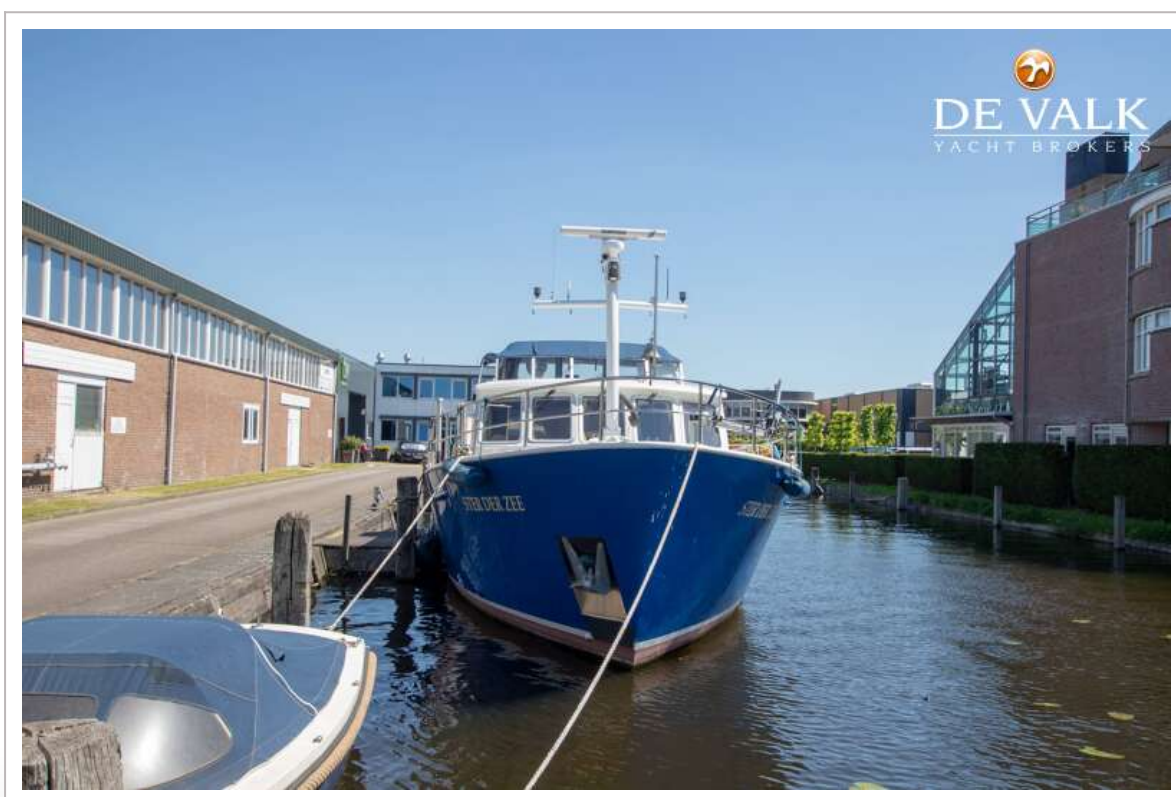


VRIPACK KOTTER 1500

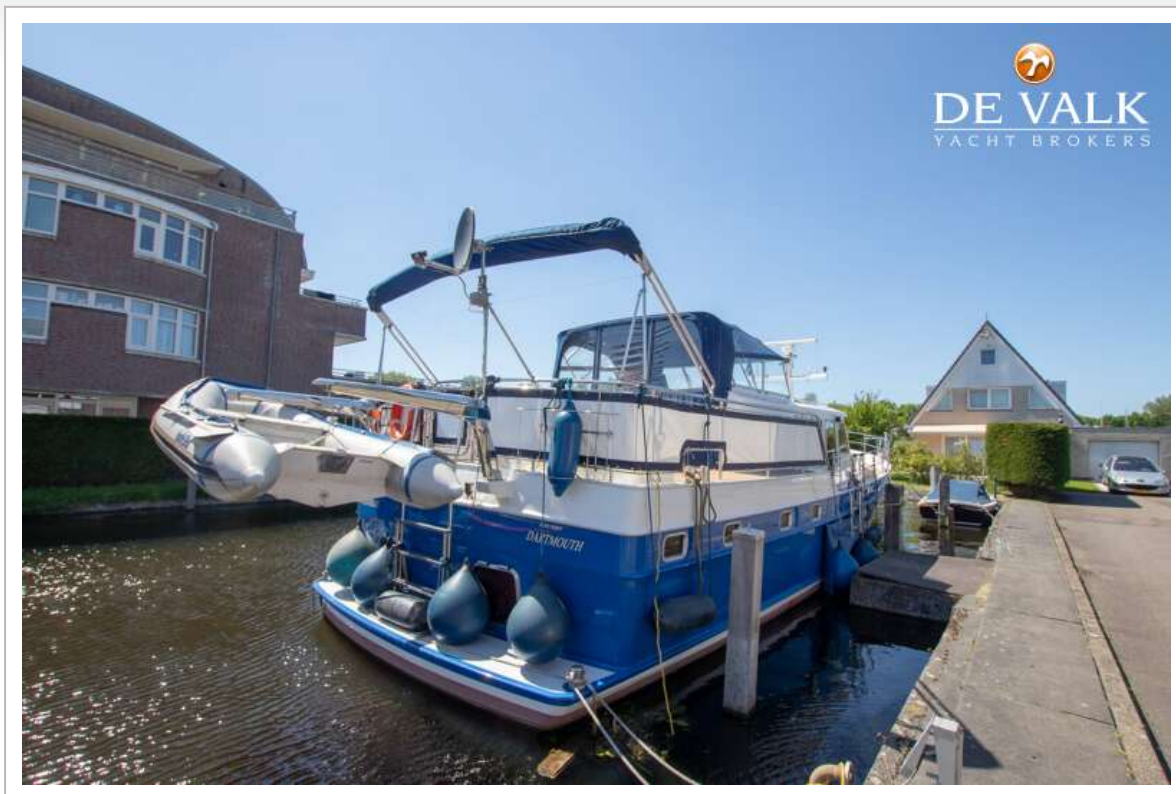




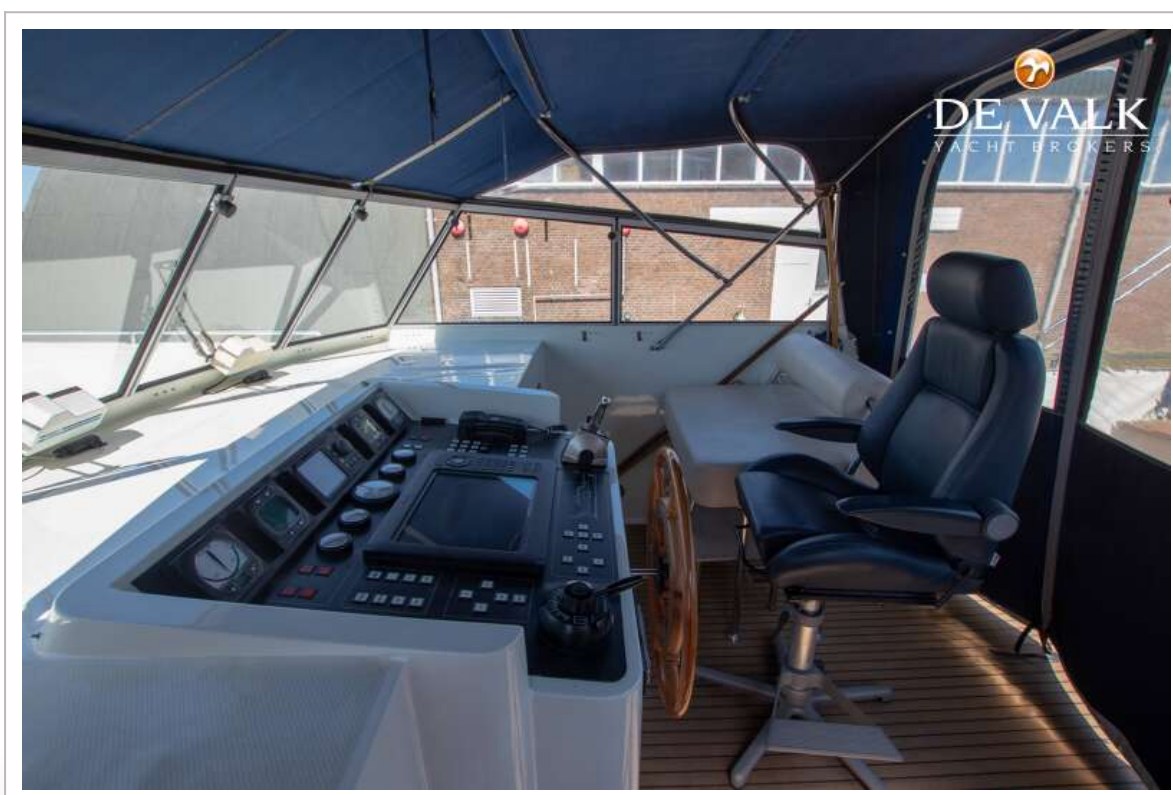
VRIPACK KOTTER 1500



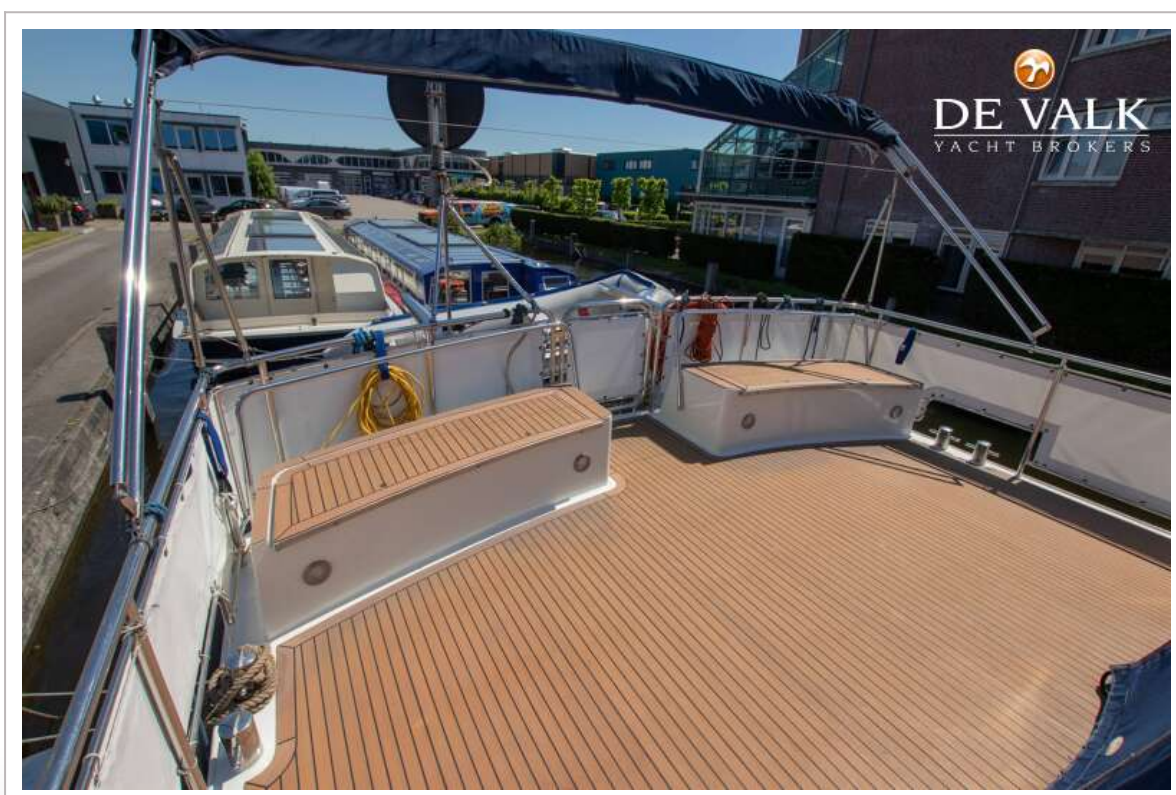
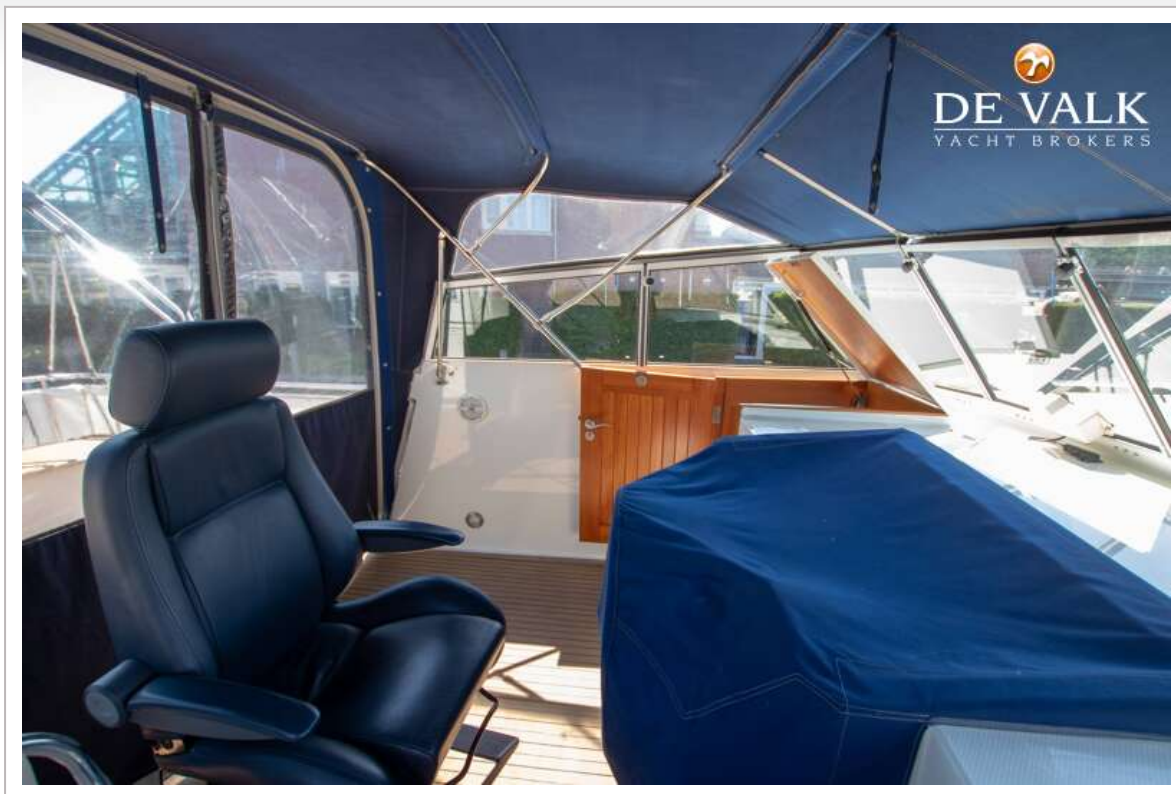
VRIPACK KOTTER 1500



VRIPACK KOTTER 1500



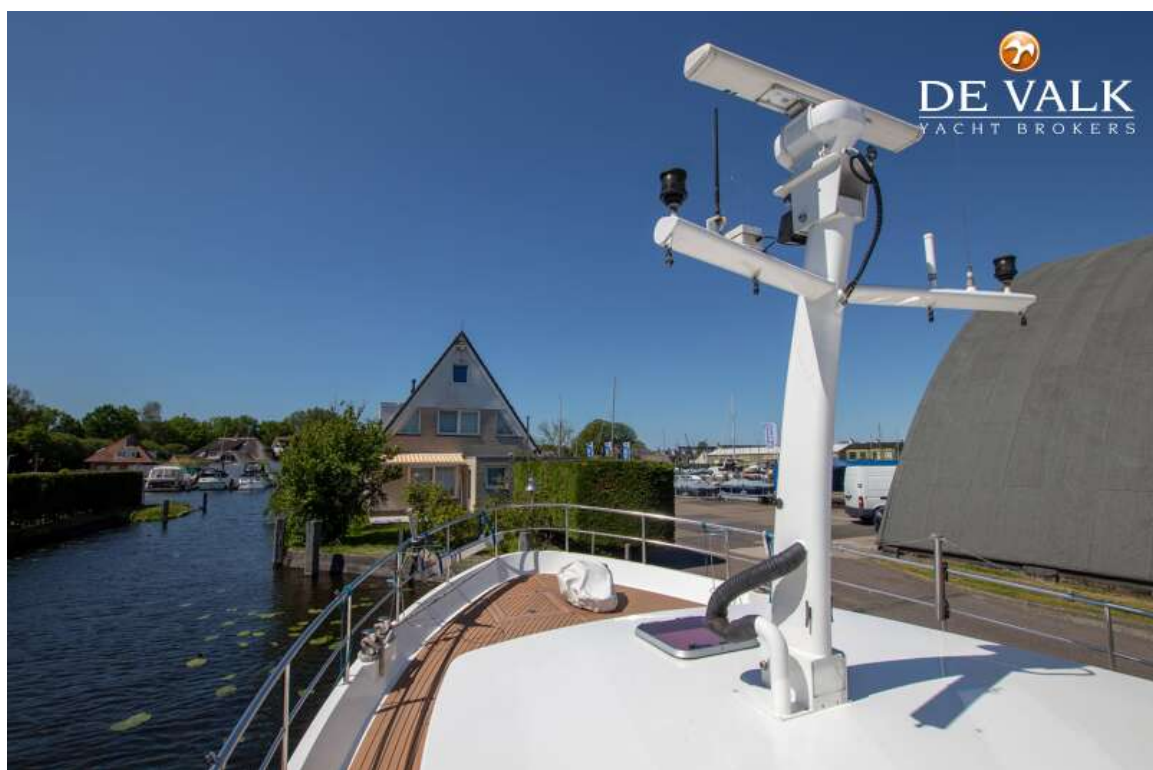
VRIPACK KOTTER 1500



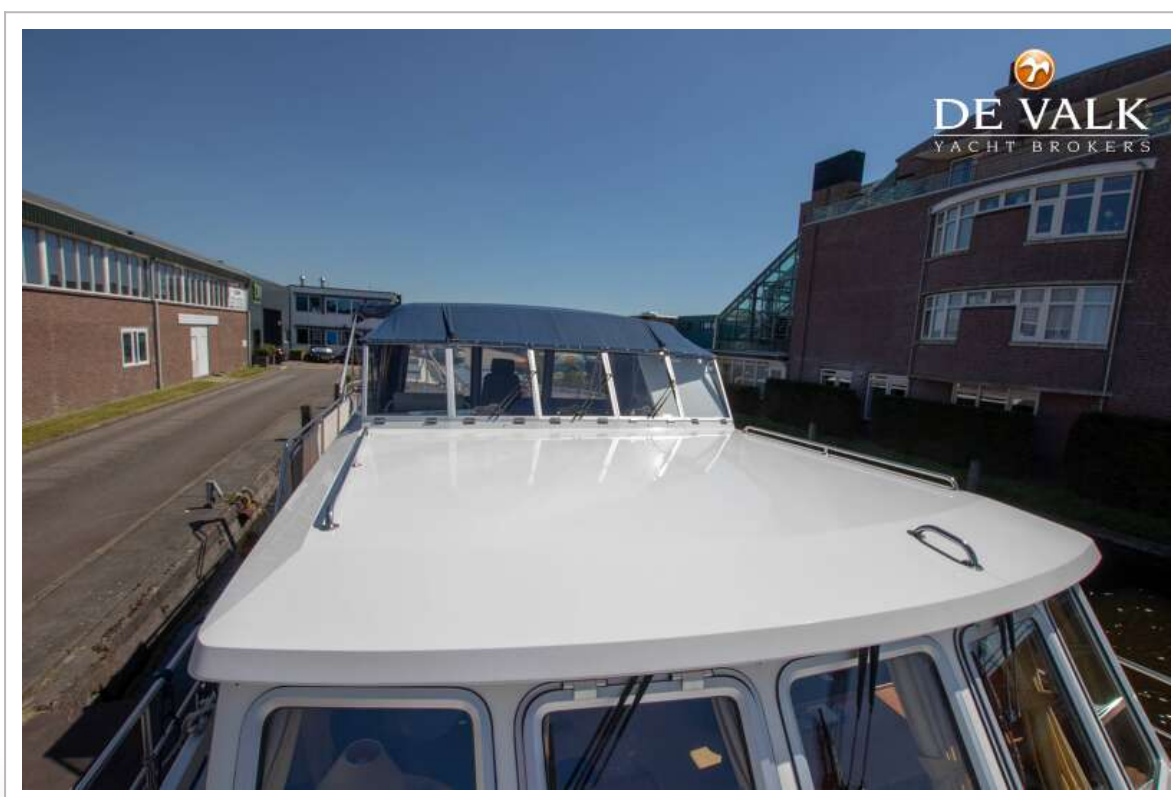
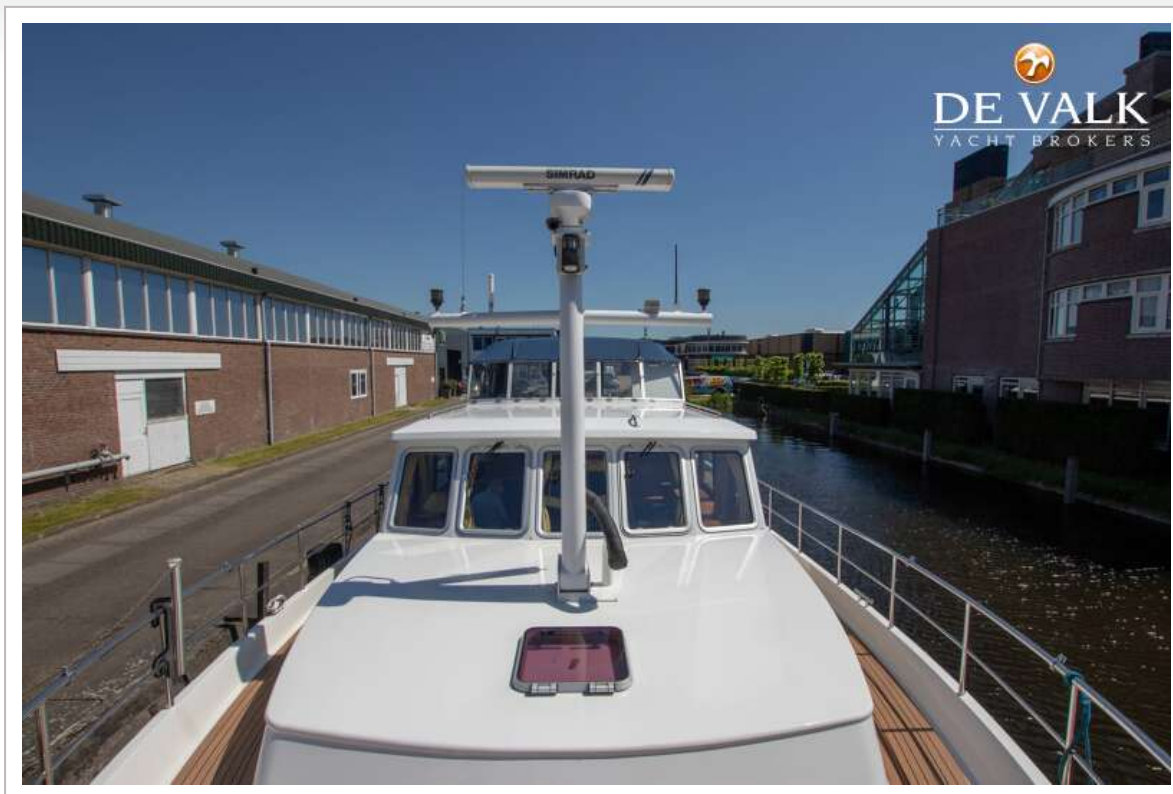
VRIPACK KOTTER 1500



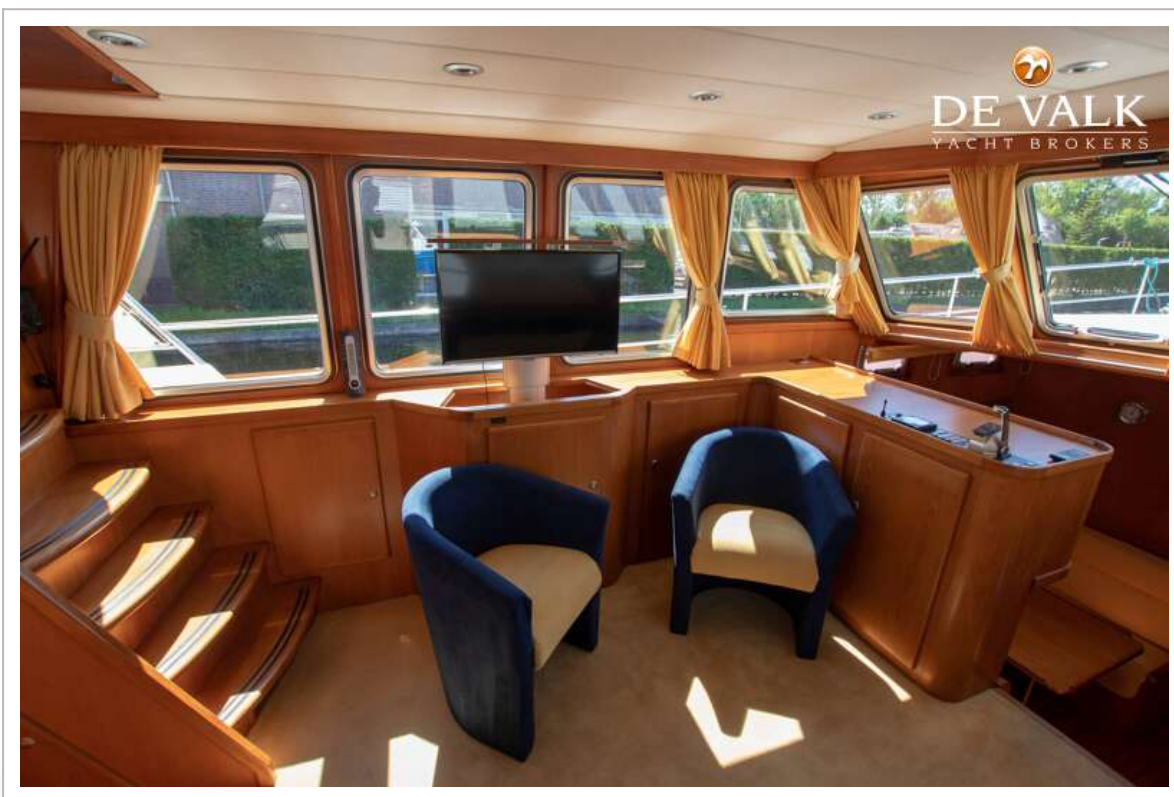
VRIPACK KOTTER 1500



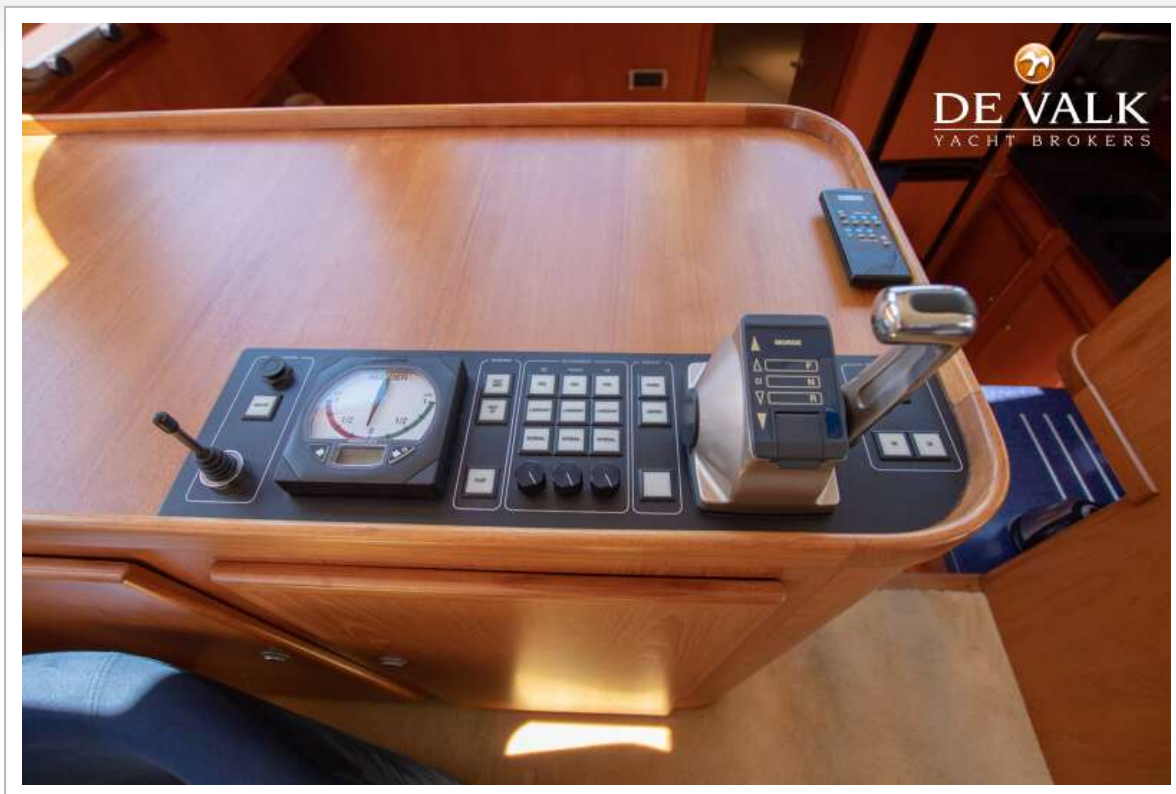
VRIPACK KOTTER 1500



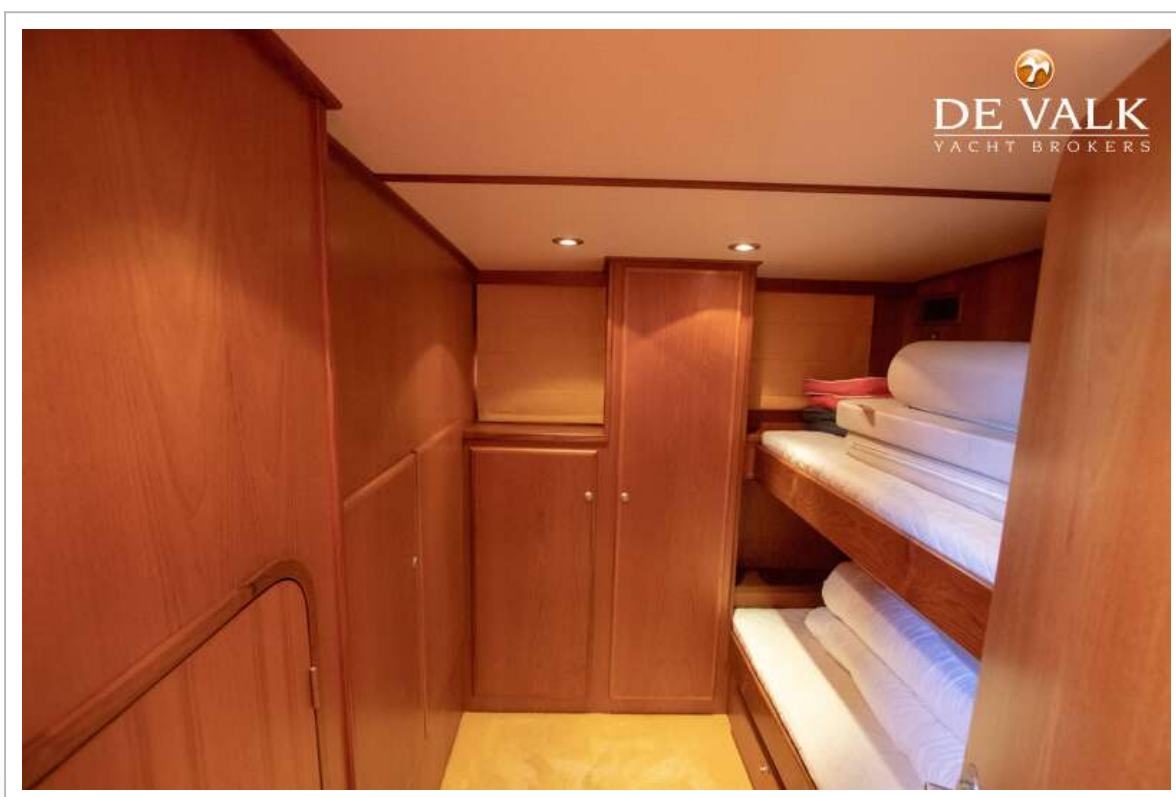
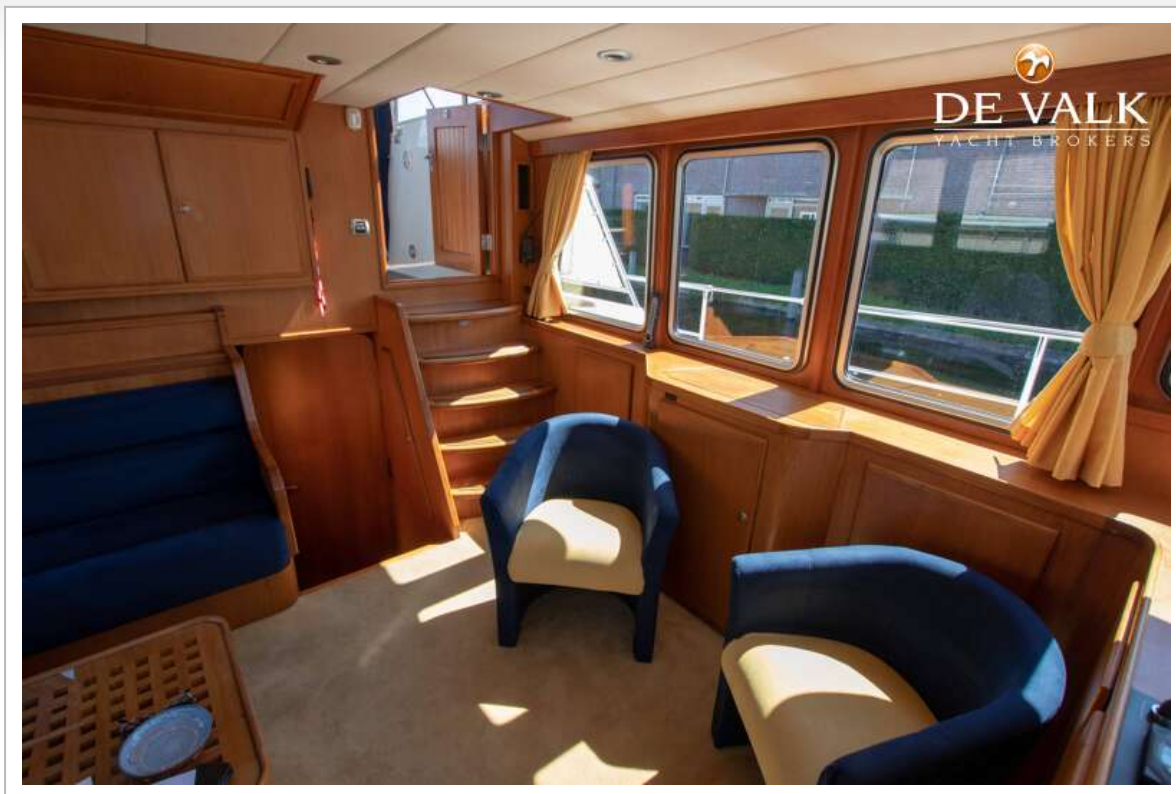
VRIPACK KOTTER 1500



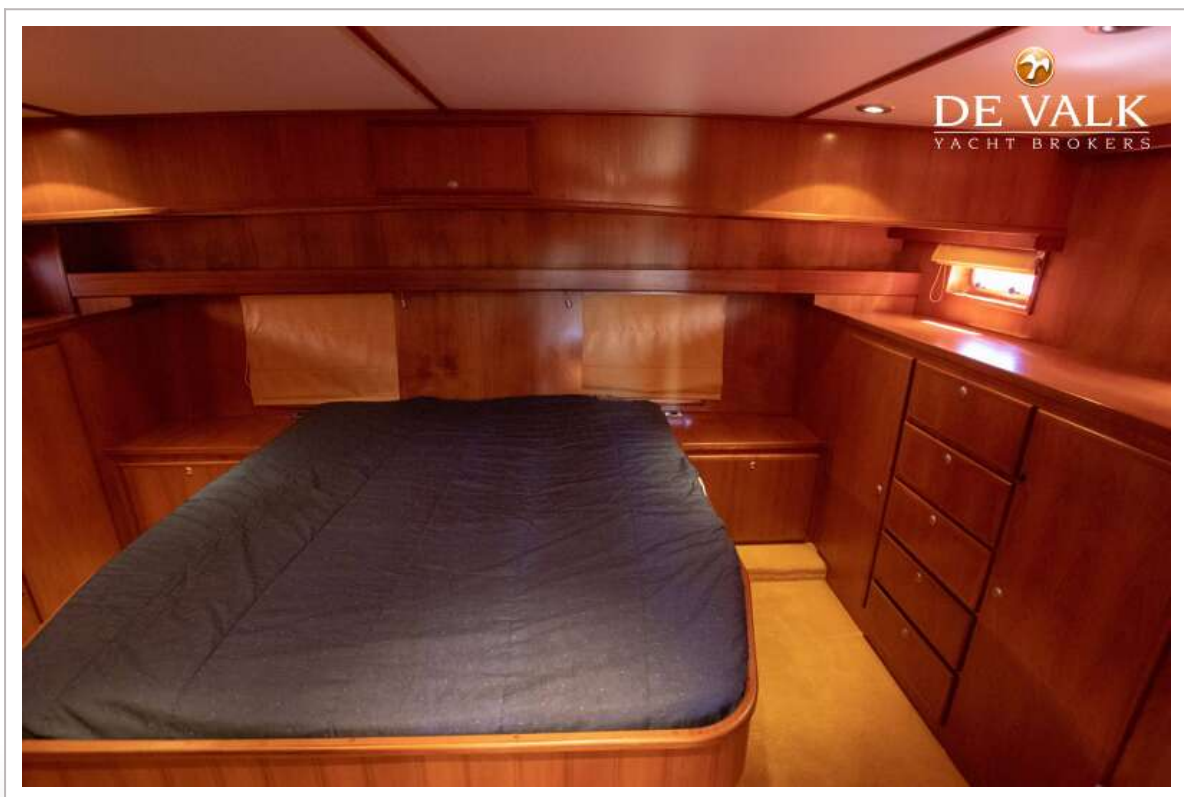
VRIPACK KOTTER 1500



VRIPACK KOTTER 1500



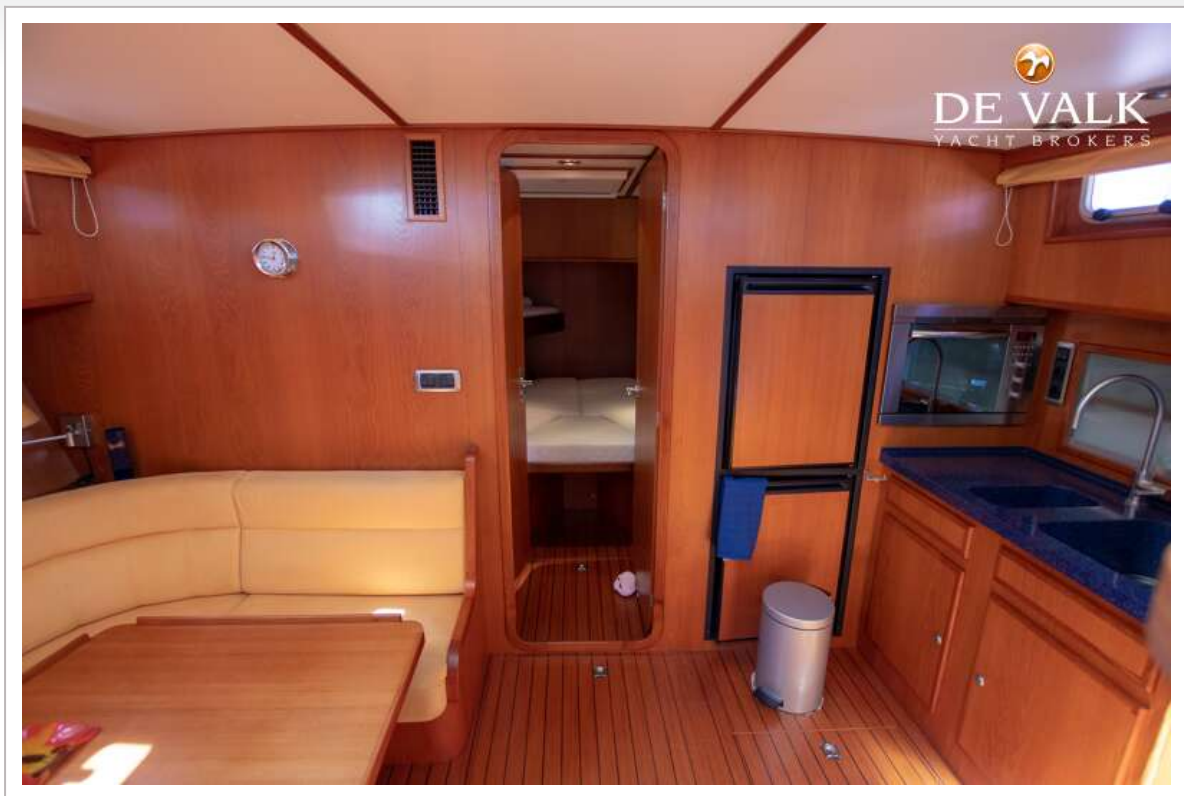
VRIPACK KOTTER 1500



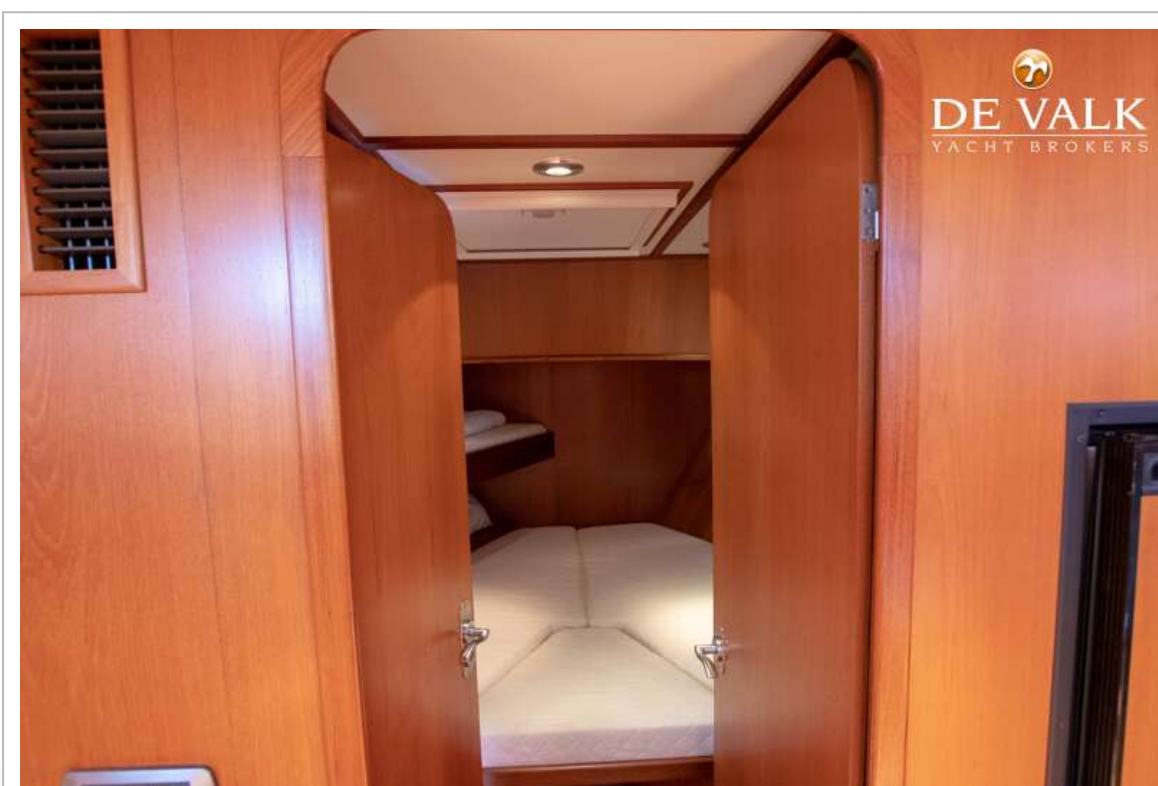
VRIPACK KOTTER 1500

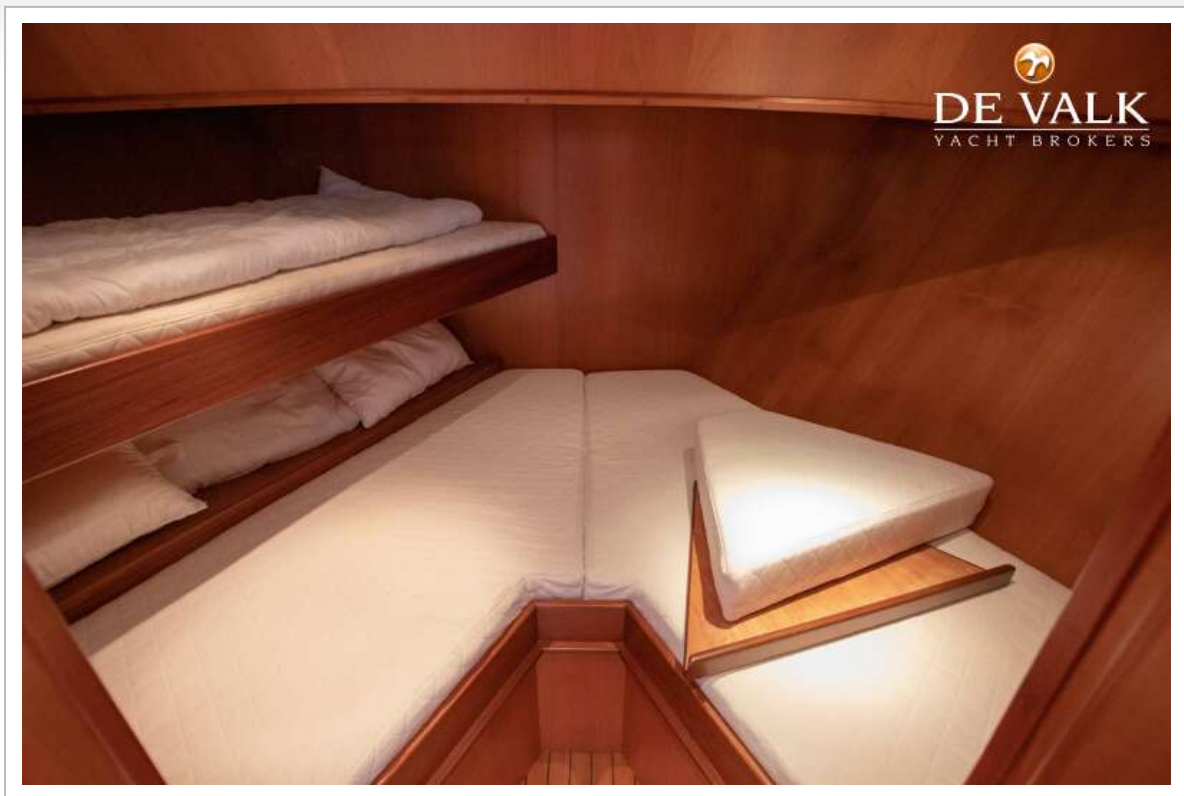


VRIPACK KOTTER 1500

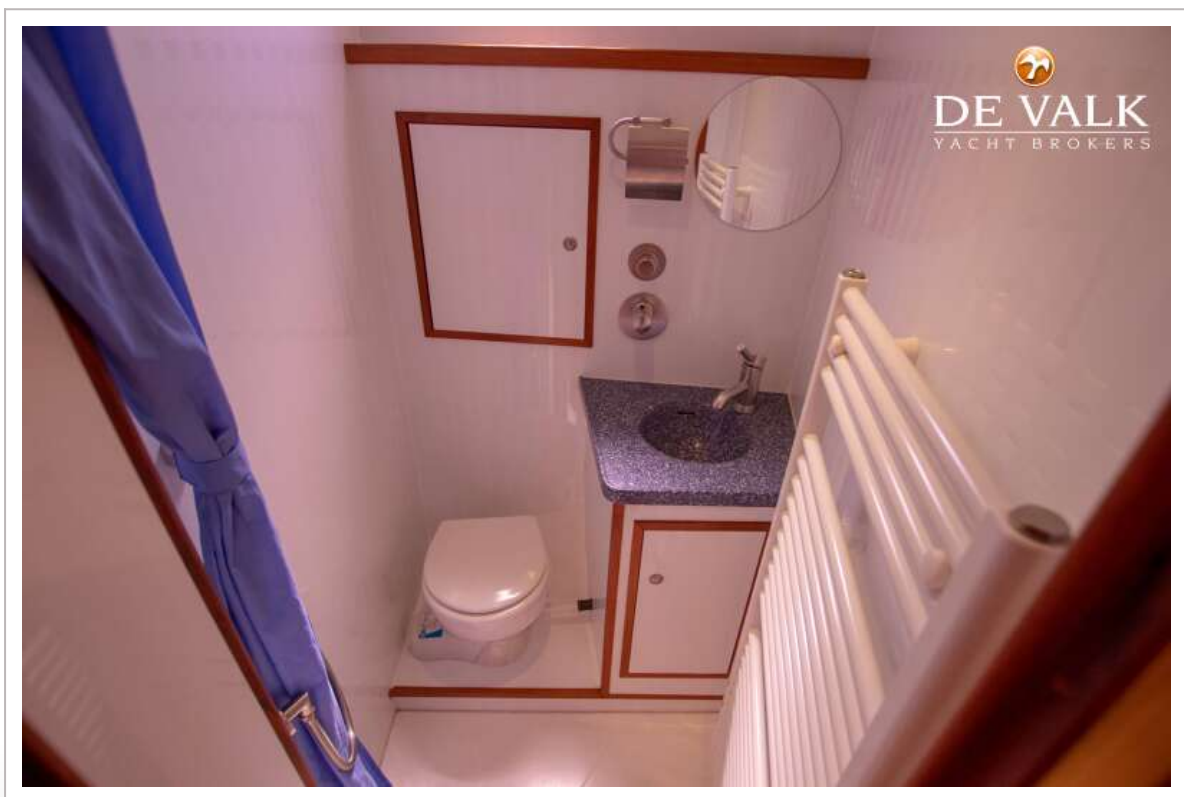
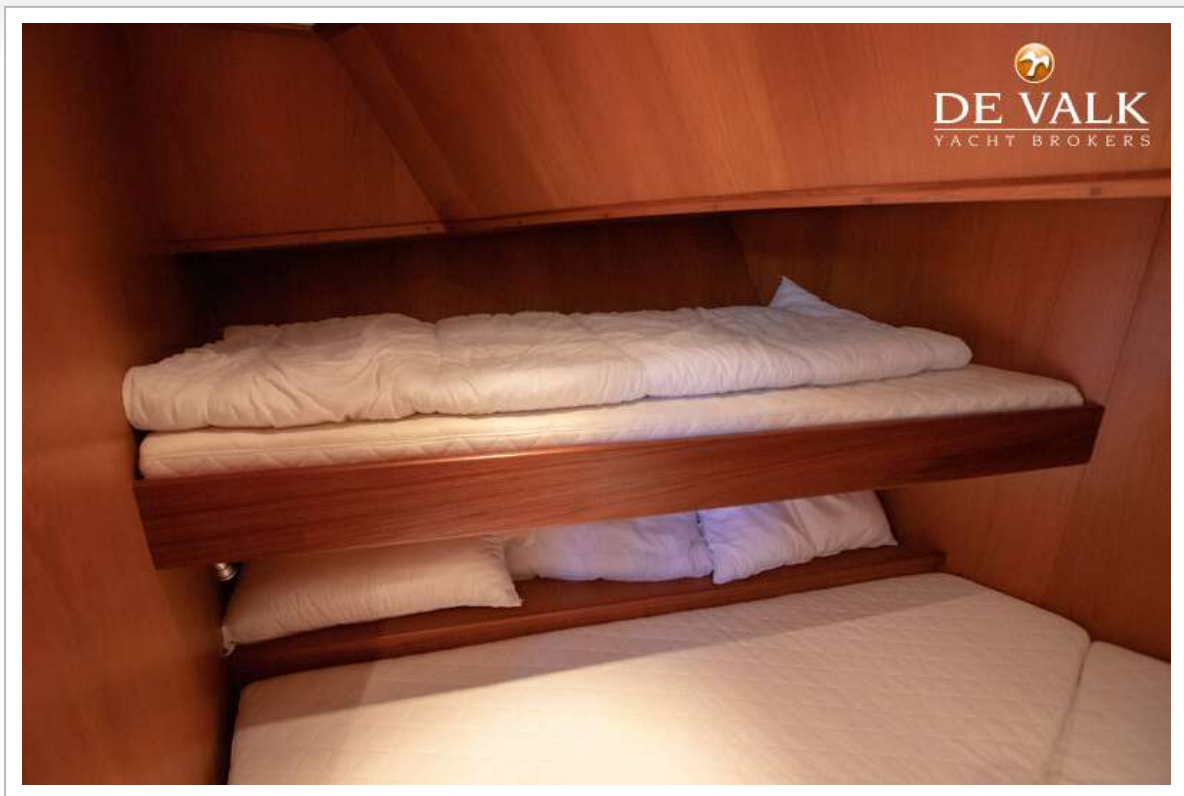


VRIPACK KOTTER 1500





VRIPACK KOTTER 1500



VRIPACK KOTTER 1500



VRIPACK KOTTER 1500

