



DE VALK
YACHT BROKERS



EXPEDITIONSHIP HOTELSHIP



DE VALK
YACHT BROKERS

BROKERAGE | CHARTER | BERTHS | FINANCE | INSURANCE | YACHT MANAGEMENT

BROKER'S COMMENTS

Motor yacht Tertius, Build in 1976 at Schiffwerft Evers in Germany. 7 cabins with 14 berths, cabins with washbowl, wardrobe, office desk. Ideal motor yacht for divingcruises, hotel or appartement ship, explore vessel, live onboard. Very well maintained by her current owners. Two MTU diesel engines, bowthruster and three generators. Viewing is possible by appointment.

Pieter Bosma

SPECIFICATIONS

| | | | |
|---------------------|------------------------------------|----------------|------------------------------|
| Dimensions | 24.96 x 7.02 x 1.60 (m) | Builder | Schiffswerft Evers GMBH |
| Built | 1976 | Cabins | 7 |
| Material | Steel | Berths | 14 |
| Engine(s) | 2 x MTU Mercedes Benz OM403 diesel | Hp/Kw | 2 x 250.00 (hp), 183.75 (kw) |
| Asking price | sold (VAT) | Lying | contact Sneek |

CONTACT

| | | | |
|---------------------|--------------------------------------|------------------|---------------------|
| Sales office | De Valk Sneek | Telephone | +31 (0)515 42 80 30 |
| Address | Zwolsmanweg 7 8606 KC Sneek NL | E-mail | sneek@devalk.nl |

DISCLAIMER

These particulars are given in good faith as supplied but cannot be guaranteed.



GENERAL

| | |
|----------------------------|------------------------------|
| Model | EXPEDITIONSHIP HOTELSHIP |
| Type | motor yacht |
| LOA (m) | 24,96 |
| LWL (m) | 22,73 |
| Beam (m) | 7,02 |
| Draft (m) | 1,60 |
| Air draft (m) | 8,82 |
| Year built | 1976 |
| Builder | Schiffswerft Evers GMBH |
| Country | Germany |
| Displacement (t) | 150 |
| CE norm | NA |
| Hull material | steel |
| Hull colour | blue |
| Hull thickness (mm) | 7mm / 9mm |
| Hull shape | round-bilged |
| Superstructure material | steel |
| Superstructure (mm) | 6mm |
| Rubbing strake | steel |
| Deck material | steel |
| Deck finish | paint |
| Superstructure deck finish | paint |
| Cockpit deck finish | paint |
| Antifouling (year) | 09-2021 and 33 x 5 kg anodes |
| Window frame | steel |
| Window material | tempered glass |
| Portholes | yes |
| Flybridge | yes |
| Radar arch | |
| Fuel tank (litre) | 12.100 |



EXPEDITIONSHIP HOTELSHIP

| | |
|----------------------------|---|
| Fuel daytank (litre) | 2 x 685L |
| Freshwater tank (litre) | 5000L |
| Blackwater tank (litre) | 1750L |
| Blackwater tank extraction | deck extraction |
| Greywater tank (litre) | 3500L (recently coated) |
| Extra info | Balast tank SB and BB 7000L (empty and recently coated) |
| Extra info | Balast tank 14000L (empty and recently coated) |
| Extra info | Frontdeck canbe loaded with 20 tons of weight |

ACCOMMODATION

| | |
|--------------------------|--|
| Cabins | 7 |
| Berths | 14 |
| Floor | vinyl |
| Saloon | yes |
| Heating | central heating Buderes S325 35kw |
| Opening door to aft deck | yes |
| Galley | yes |
| Countertop | stainless steel |
| Sink | stainless steel |
| Cooker | induction 4 burner and baking tray |
| Oven | Bohnhoff |
| Extractor | yes |
| Fridge | Zanussi fridge with Freezer, Whirlpool Fridge |
| Freezer | 2 x Freezer 150L in the front |
| Hot water system | on central heating 110L boiler |
| Water pressure system | electrical |
| Owners cabin | double bed |
| Wardrobe | yes |
| Guest cabin 1 | 6 cabins wiht 2 berths, washbowl, table, chair |
| Wardrobe | hanging and drawers |
| Toilet | shared |



| | |
|-----------------|------------------------------|
| Toilet system | electric |
| Shower | shared |
| Washing machine | Zanussi Lindo honderd (2018) |
| Dryer | Atlanta 7KG |

MACHINERY

| | |
|---------------------------|---|
| No of engines | 2 |
| Make | MTU Mercedes Benz |
| Type | OM403 |
| HP | 250 |
| kW | 183,75 |
| Fuel | diesel |
| Maximum speed (kn) | 8,8 |
| Cruising speed (kn) | 6,7 |
| Engine hours | 4500 |
| Engine cooling system | closed keelcooling |
| Drive | shaft |
| Gearbox | hydraulic Reintjes type: BGA 4:1 200 |
| Bowthruster | electric 30HP 380V, 3 speeds, 4 bld 60 cm propeller |
| Exhaust | dry |
| Propeller type | fixed |
| Propeller blades | 5 bladed |
| Propeller shaft material | steel |
| Shaft lubrication | oilbath |
| Electric bilge pump | yes |
| Generator | 2x MTU 40KVA |
| Running hours generator | 4350 /4351 (09-2021) |
| Generator 2 | Hatz silentpack 17,5Kva (2002) |
| Running hours generator 2 | 30000 hrs (09-2021) |
| Start battery | 4 x 180 amp (2020) |
| Service battery | 4 x 200 amp (2018) |



| | |
|------------------------|-----------------------------------|
| Generator battery | (2020) |
| Battery charger | 2 x Victron 50amp |
| Shorepower | with cable |
| Insulation transformer | 17,5KVA 25amp (2018) |
| Extra info | Hydraulic oil 120L (2017) |
| Extra info | Double fuelfilters at the engines |

NAVIGATION

| | |
|-------------------|---|
| Compass | yes |
| Depth sounder | Furuno FCV 281 |
| Windset | Garmin |
| VHF | Debeg VHF, Icon |
| Autopilot | Furuno FAP300 |
| Radar | JRC Elna 3000 (32nm range), Garmin radar Fantom 24 (2019) |
| GPS | Garmin GP 128 |
| Plotter/GPS | Periskal computer with 19" |
| Radar/GPS/plotter | Garmin XSV (radar chartplotter, depht, wind) |
| AIS transponder | Furuno FA150 |
| Camera | Bascom 5x (2 x engineroom, upperdeck, afdeck, stern, BB) |
| Navigation lights | yes |
| Searchlight | yes |
| Loudhailer | Intercom system |
| Extra info | yes |

EQUIPMENT

| | |
|------------------|-------------------------|
| Cockpit chairs | And 2 plastic banks |
| Bathing platform | yes |
| Boarding ladder | yes |
| Transom door | yes |
| Gangway | Aluminium 4meter x 90cm |
| Anchor | 300KG 55M, 16,5 mm dam |



EXPEDITIONSHIP HOTELSHIP

| | |
|-----------------------------|---------------------------------------|
| Anchor chain | Chain wash |
| Anchor 2 | 240KG 85M |
| Windlass | electrical |
| Dinghy | Secumar 360 |
| Deck crane | electric SB 380V, 500KG. BB 24V 125KG |
| Sea railing | steel |
| Lifejackets | 50 Lifejackets |
| Clearview window | 2x |
| Horn | Tyfoon |
| Fenders | yes |
| Mooring lines | yes |
| TV | JVC |
| TV receiver | Digitenne |
| Radio-cd player | yes |
| Clock - barometer | 2 x barometer |
| Fire extinguisher | 5x |
| Extinguisher in engine room | yes |
| Extra info | Dahone 185 KG spare anchor |
| Extra info | Deck 9x5m |
| Extra info | 5 watertight bulkheads |





EXPEDITIONSHIP HOTELSHIP

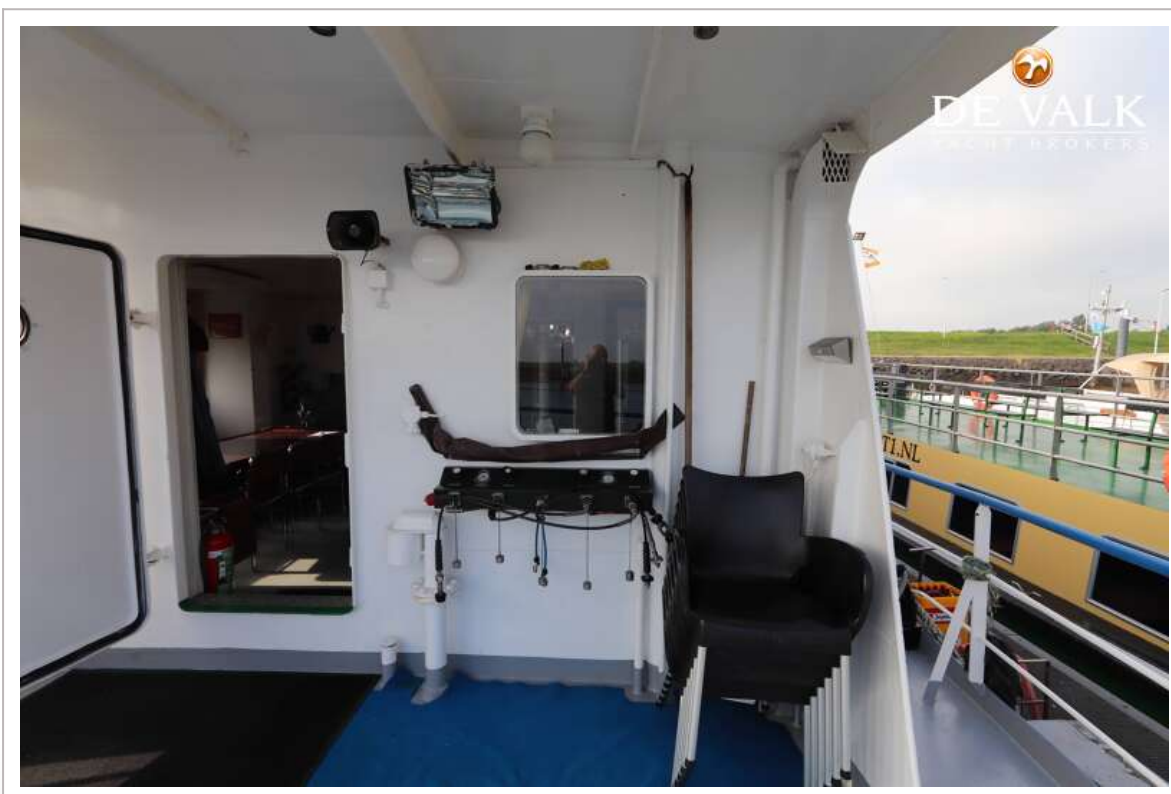


EXPEDITIONSHIP HOTELSHIP

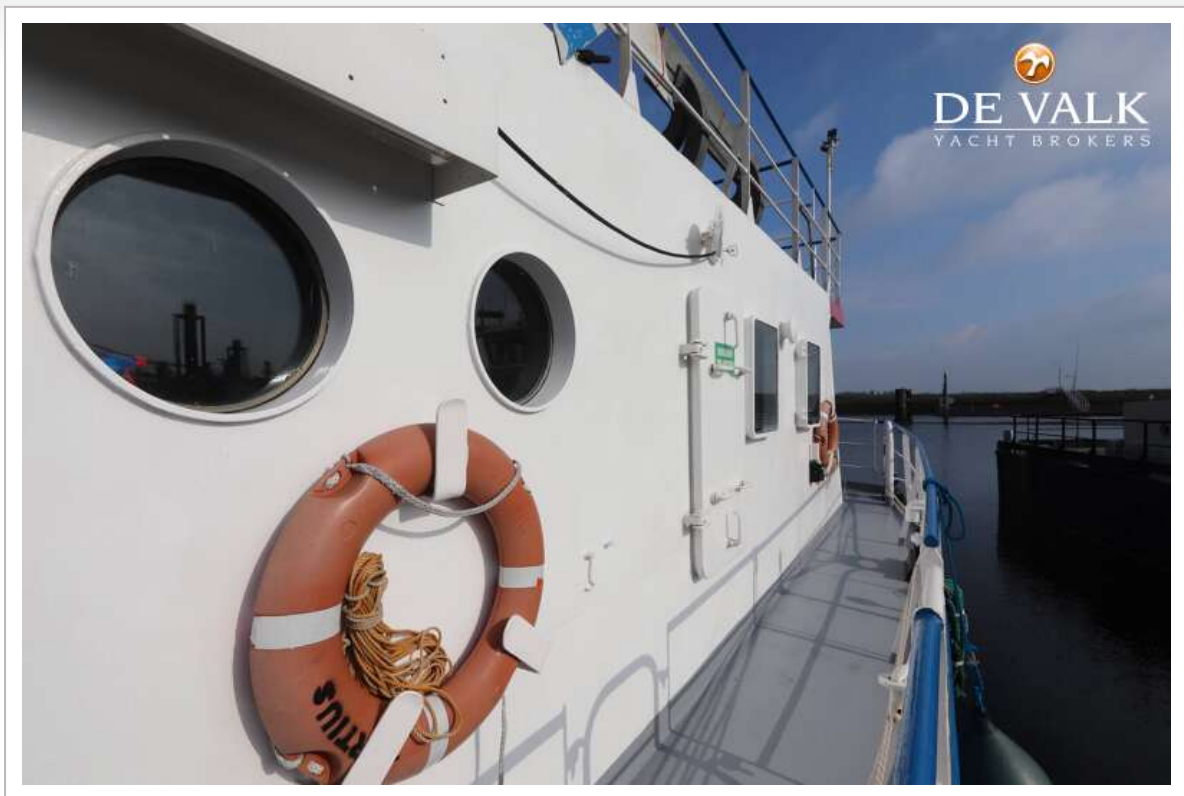


EXPEDITIONSHIP HOTELSHIP





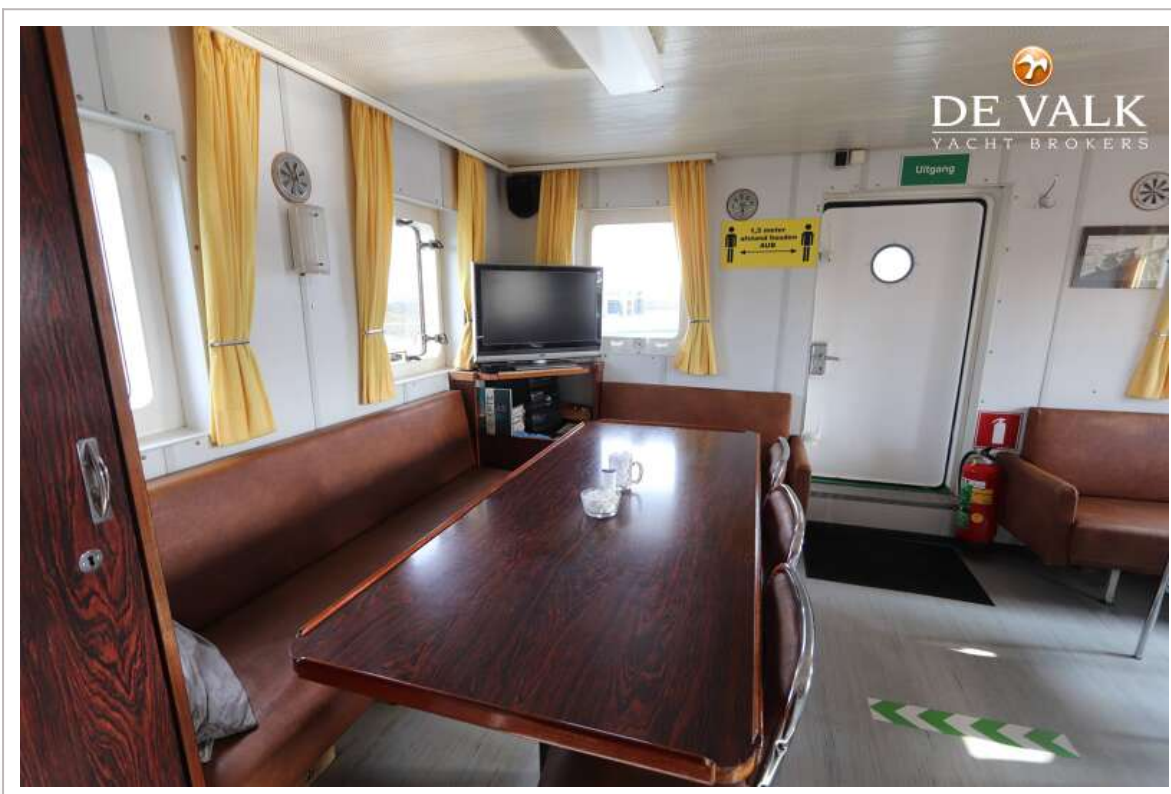


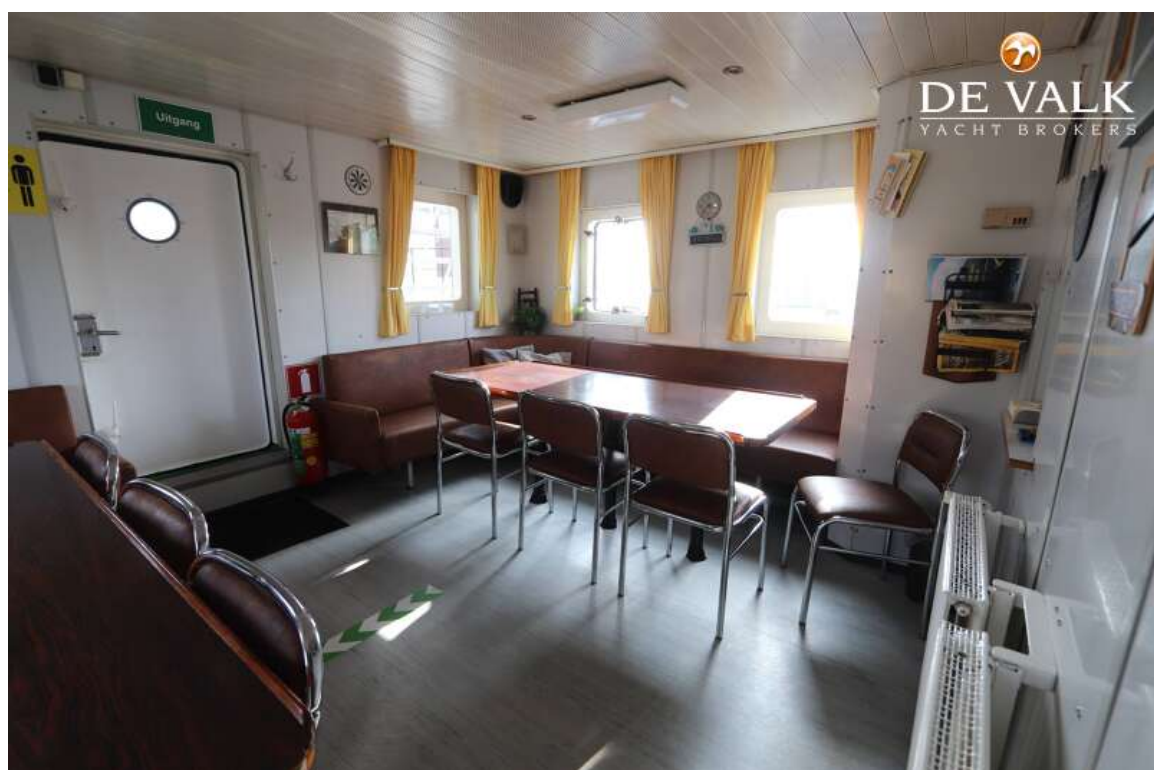






EXPEDITIONSHIP HOTELSHIP

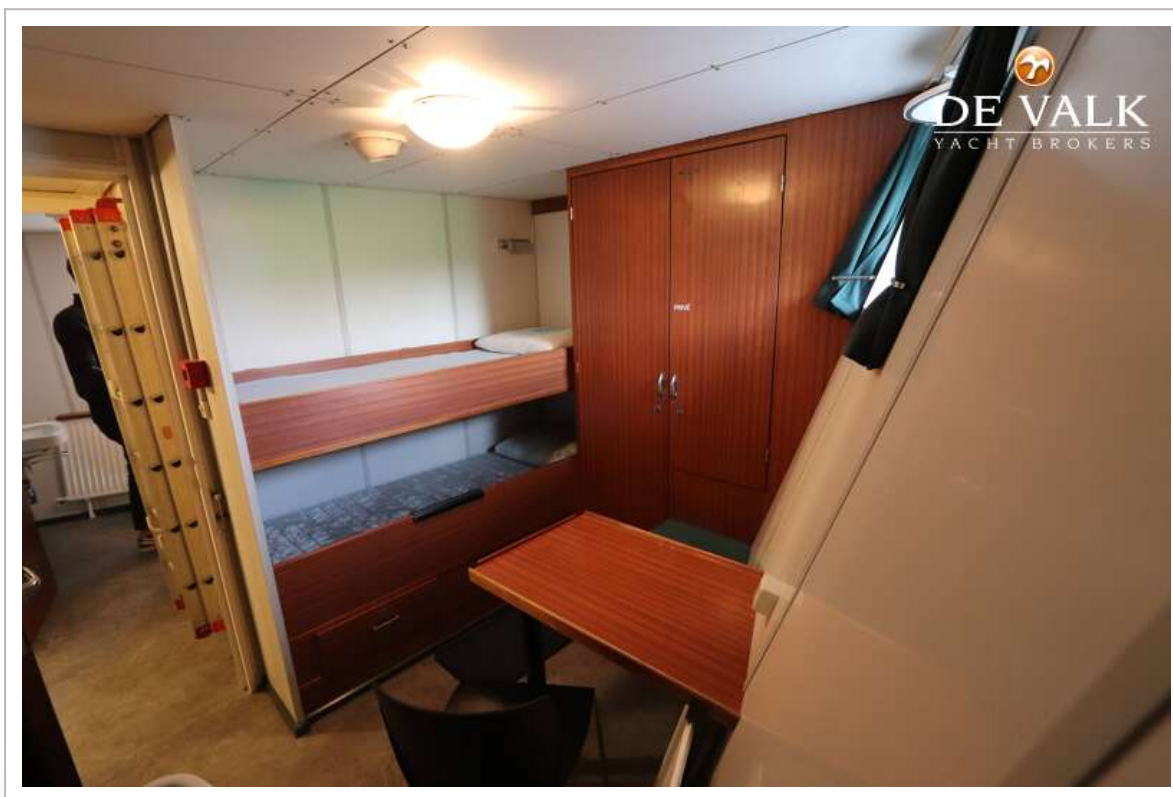




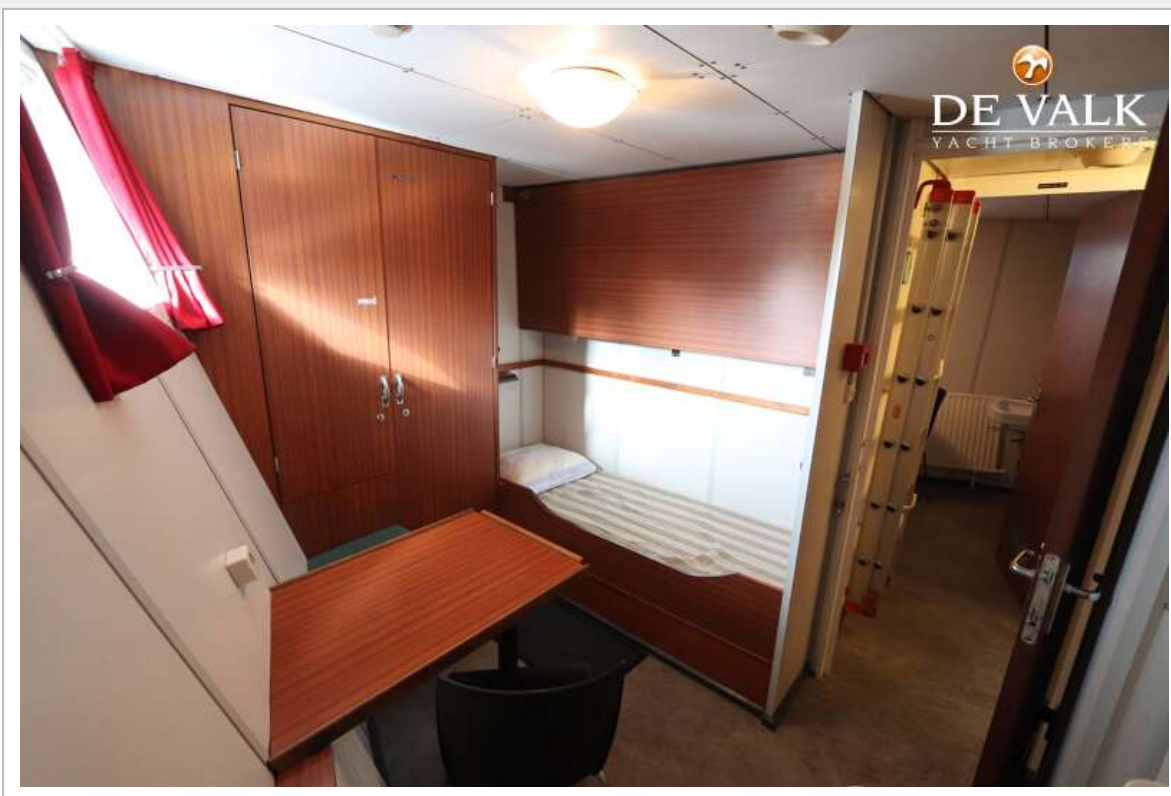
EXPEDITIONSHIP HOTELSHIP

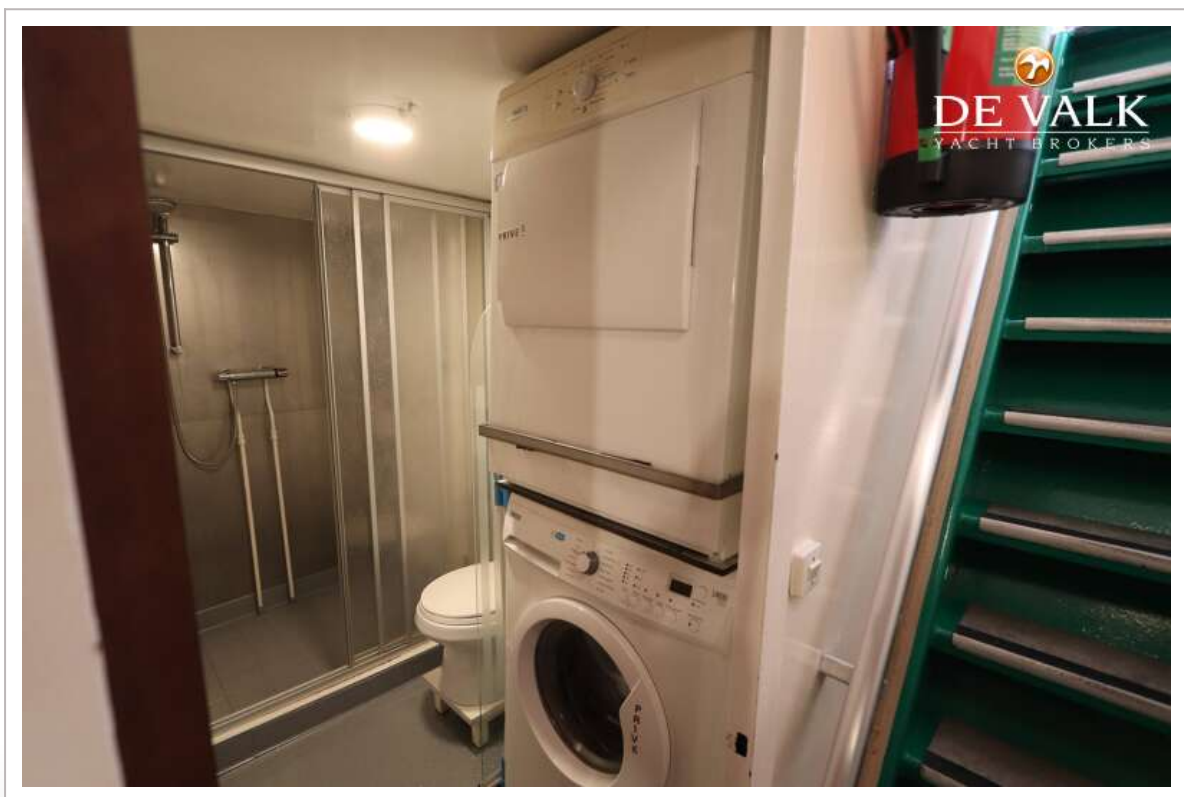
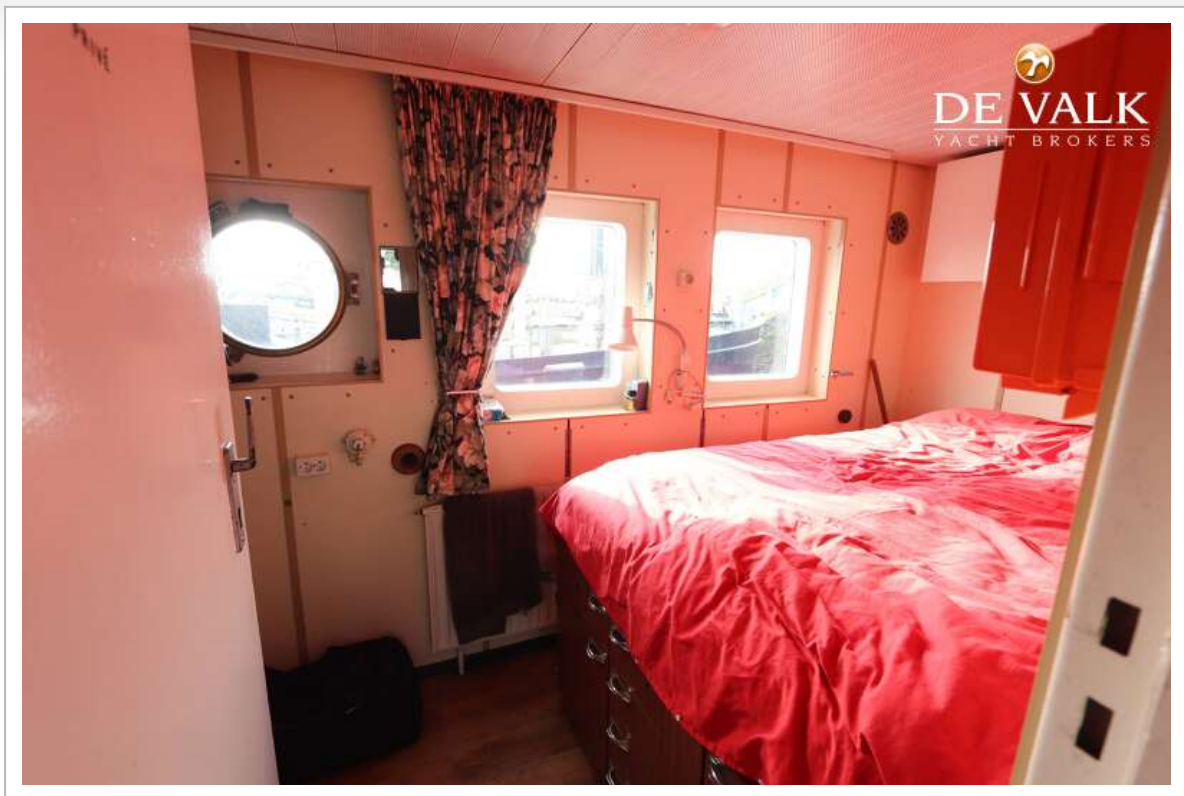


EXPEDITIONSHIP HOTELSHIP

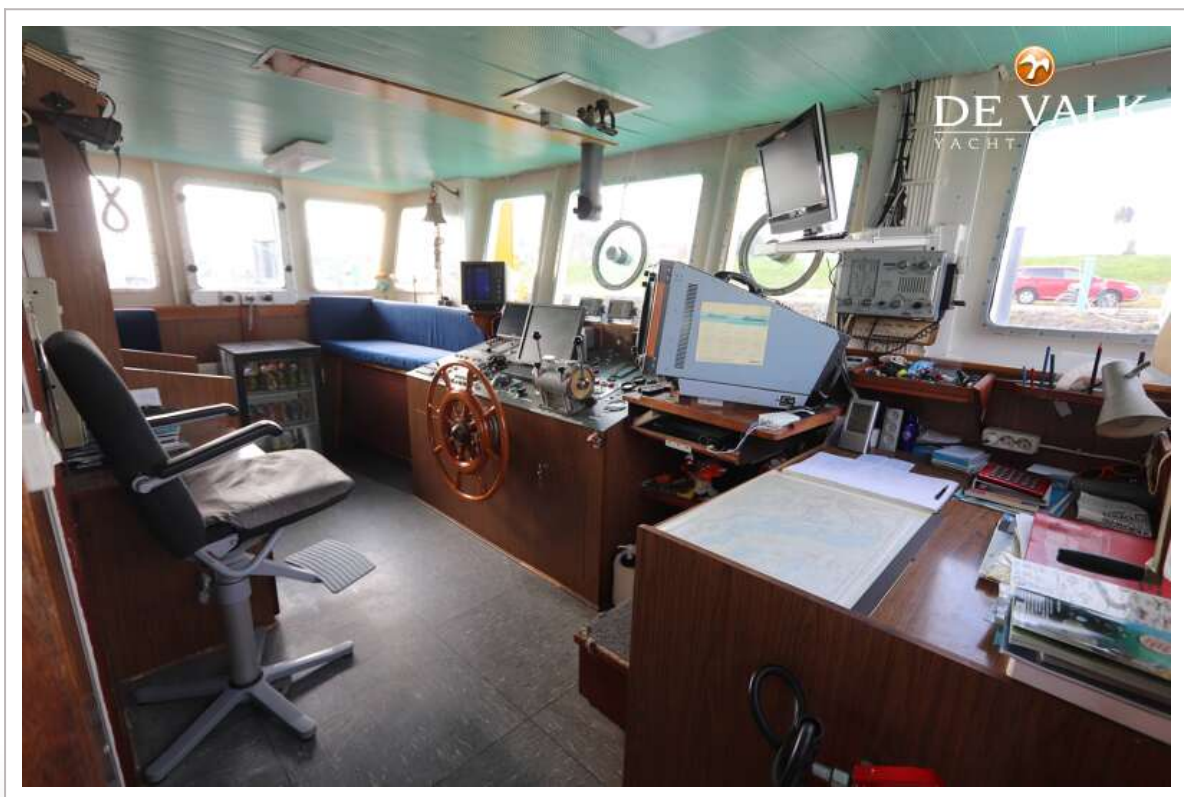
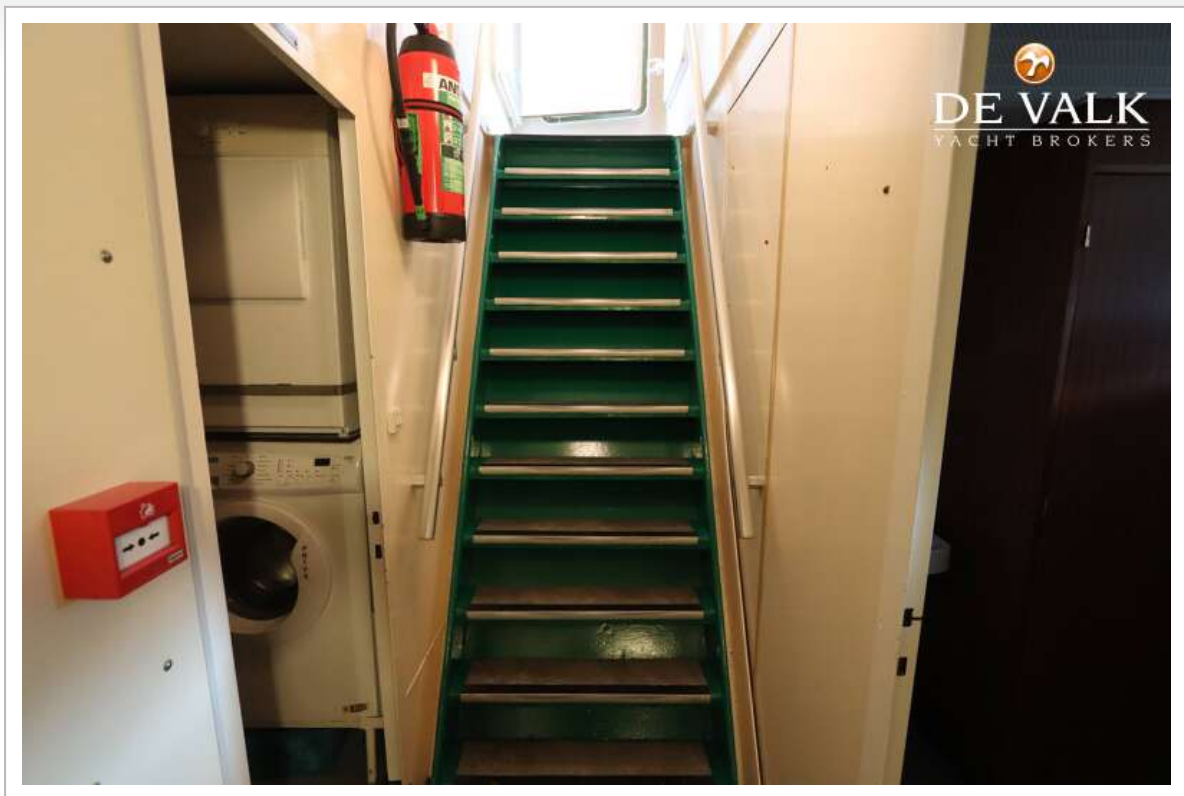


EXPEDITIONSHIP HOTELSHIP

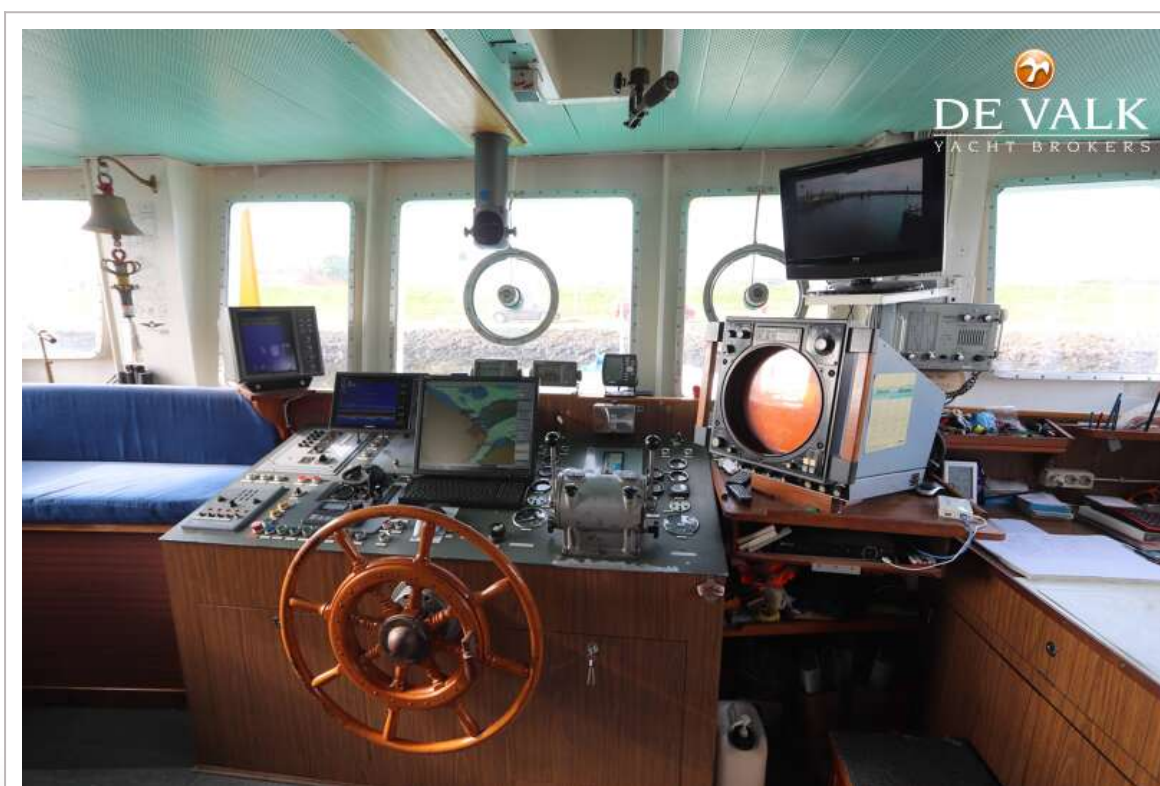




EXPEDITIONSHIP HOTELSHIP



EXPEDITIONSHIP HOTELSHIP



EXPEDITIONSHIP HOTELSHIP

