



DE VALK  
YACHT BROKERS



CARLINE 1280



DE VALK  
YACHT BROKERS

# CARLINE 1280

## BROKER'S COMMENTS

The Carline 12.80 "Coppelstock" is a very well maintained motor yacht with a lot of living space and navigation equipment. A beautiful ship to discover the European waterways. This Carline 12.80 is equipped with a two cabin layout, central heating and a large fridge and freezer. Due to her Vetus Deutz diesel engine and Sidepower SP125T electric bow- and stern thruster, she is easy to maneuver. You can view this beautiful Carline in our covered sales harbour in Sneek.

*Peter Spruyt*

## SPECIFICATIONS

<b>Dimensions</b>	12.80 x 4.20 x 1.20 (m)	<b>Builder</b>	Bijko Harlingen
<b>Built</b>	2006	<b>Cabins</b>	2
<b>Material</b>	Steel	<b>Berths</b>	4
<b>Engine(s)</b>	1 x Vetus Deutz DT66442E diesel	<b>Hp/Kw</b>	170.00 (hp), 124.95 (kw)
<b>Asking price</b>	sold (VAT )	<b>Lying</b>	at sales office

## CONTACT

<b>Sales office</b>	De Valk Sneek	<b>Telephone</b>	+31 (0)515 42 80 30
<b>Address</b>	Zwolsmanweg 7 8606 KC Sneek NL	<b>E-mail</b>	sneek@devalk.nl

## DISCLAIMER

These particulars are given in good faith as supplied but cannot be guaranteed.



## GENERAL

Model	CARLINE 1280
Type	motor yacht
LOA (m)	12,80
Beam (m)	4,20
Draft (m)	1,20
Air draft (m)	2,95
Headroom (m)	2,00
Year built	2006
Builder	Bijko Harlingen
Country	The Netherlands
Designer	Topline yacht design
Displacement (t)	15
CE norm	C
Hull material	steel
Hull colour	blue
Hull shape	multi hard chine
Keel type	box keel
Superstructure material	steel
Rubbing strake	plastic
Deck material	steel
Deck finish	synthetic teak
Superstructure deck finish	non-skid paint
Cockpit deck finish	non-skid paint
Antifouling (year)	2021/ zinc anodes
Window frame	aluminium
Window material	tempered glass
Deckhatch	1 x
Portholes	aluminium
Insulation	yes
Radar arch	collapsible Electric



Fuel tank (litre)	steel 800 ltr
Level indicator (fuel tank)	yes
Freshwater tank (litre)	stainless steel 821 ltr
Level indicator (freshwater)	yes
Blackwater tank (litre)	steel
Wheel steering	hydraulic
Outside helm position	hydraulic

## ACCOMMODATION

Cabins	2
Berths	4
Interior	mahogany
Floor	teak and holly Carpet in Salon
Aft deck	yes
Headroom saloon (m)	1,98 mtr
Heating	central heating Kabola
Aft Cabin	yes
Dinette	yes
Opening door to aft deck	yes
Galley	yes
Countertop	plastic
Sink	stainless steel
Cooker	induction 4x
Extractor	Pelgrim
Microwave/oven combi	Siemens
Fridge	150 ltr Isotherm
Freezer	150 ltr Isotherm
Hot water system	220V or central heating
Water pressure system	electrical
Dishwasher	Siemens
Owners cabin	French bed



Bed length (m)	2,00 mtr
Wardrobe	hanging and drawers
Bathroom	en suite
Toilet	en suite 2 x
Toilet system	electric
Wash basin	in the bathroom
Shower	en suite
Guest cabin 1	v-bed
Bed length (m)	2,00 mtr
Wardrobe	hanging

## MACHINERY

No of engines	1
Make	Vetus Deutz
Type	DT66442E
HP	170
kW	124,95
Fuel	diesel
Year installed	2006
Maximum speed (kn)	8
Cruising speed (kn)	6
Consumption (l/hr)	7
Engine hours	2850
Engine cooling system	freshwater heat exchanger
Drive	shaft
Engine controls	bowden cable
Gearbox	hydraulic
Bowthruster	electric Sidepower SP125T
Sternthruster	electric Sidepower SP125T
Propeller type	fixed
Propeller shaft material	stainless steel



Shaft lubrication	water
Manual bilge pump	yes
Electric bilge pump	yes
Electrical installation	12/24/ 220 volt
Generator	wet exhaust Mastervolt 8/ 2020
Start battery	yes
Service battery	yes
Generator battery	1 x (2020)
Bowthruster battery	2 x (2020)
Sternthruster battery	2 x (2021)
Battery charger/inverter	Victron Multiplus 24/3000/70
Shorepower	with cable

## NAVIGATION

Electric compass	Raymarine ST60
Depth sounder	Raymarine ST60
Depth sounder/log	Raymarine ST60
Windset	Raymarine
VHF	Shipmate RS8300
Autopilot	Raymarine with remote control
Rudder angle indicator	Raymarine
Radar/GPS/plotter	Raymarine
Navigation lights	yes

## EQUIPMENT

Cockpit cover	yes
Cockpit cushions	yes
Cockpit table	yes
Cockpit chairs	yes
Bathing platform	yes
Boarding ladder	stainless steel



Anchor	CQR Plough
Anchor chain	yes
Windlass	electrical Quick with remote control
Deck wash	yes
Davits	stainless steel
Davits controls	manual
Sea railing	stainless steel
Railing side opening gates	3x
Wiper	3x with wiper control
Horn	electric
Radar reflector	yes
Fenders	yes
Mooring lines	yes
TV	(2020)
Satellite	yes
Radio-cd player	Kenwood with remote control
Surround Sound System	(2020)
Cockpit speakers	yes
Speakers in salon	yes
Speakers in cabin	yes
Clock - barometer	yes
Fire extinguisher	yes
Extinguisher in engine room	yes
Extra info	New blinds (2020)
Extra info	New led lighting (2020)



# CARLINE 1280





# CARLINE 1280

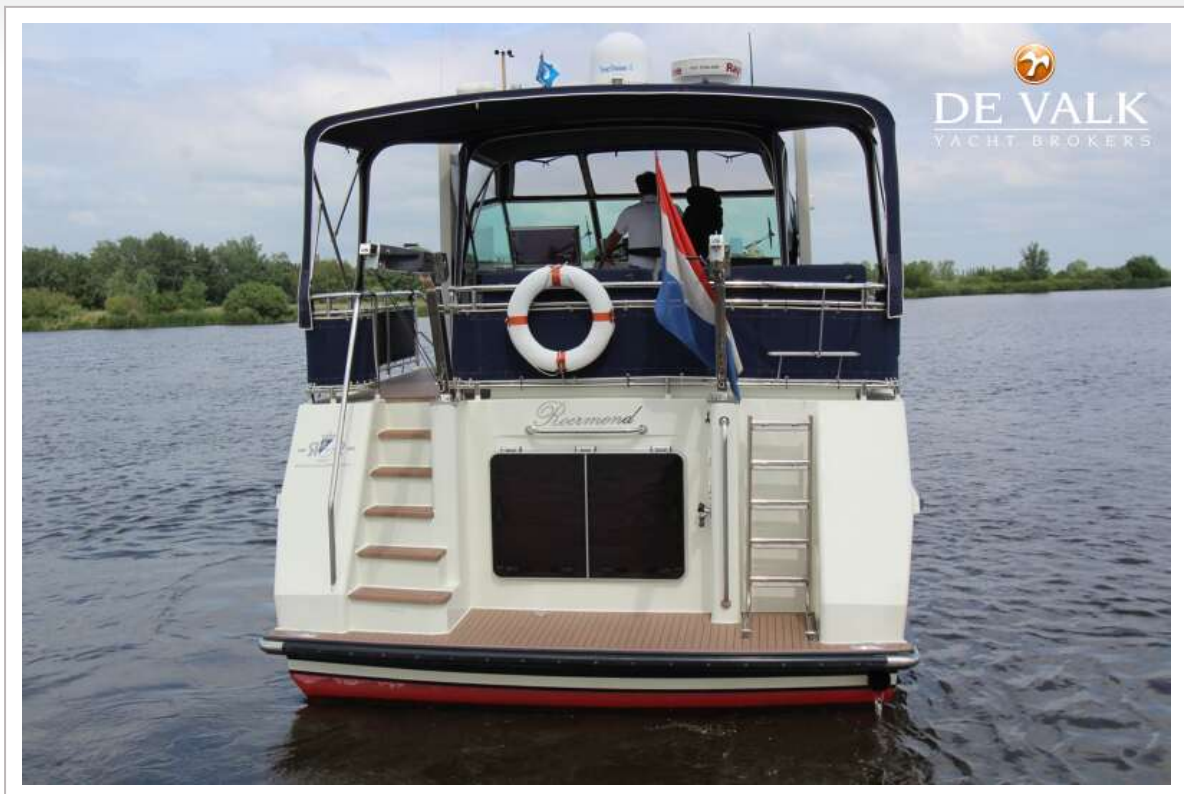


# CARLINE 1280





# CARLINE 1280



# CARLINE 1280





# CARLINE 1280



# CARLINE 1280





# CARLINE 1280



# CARLINE 1280





# CARLINE 1280



# CARLINE 1280





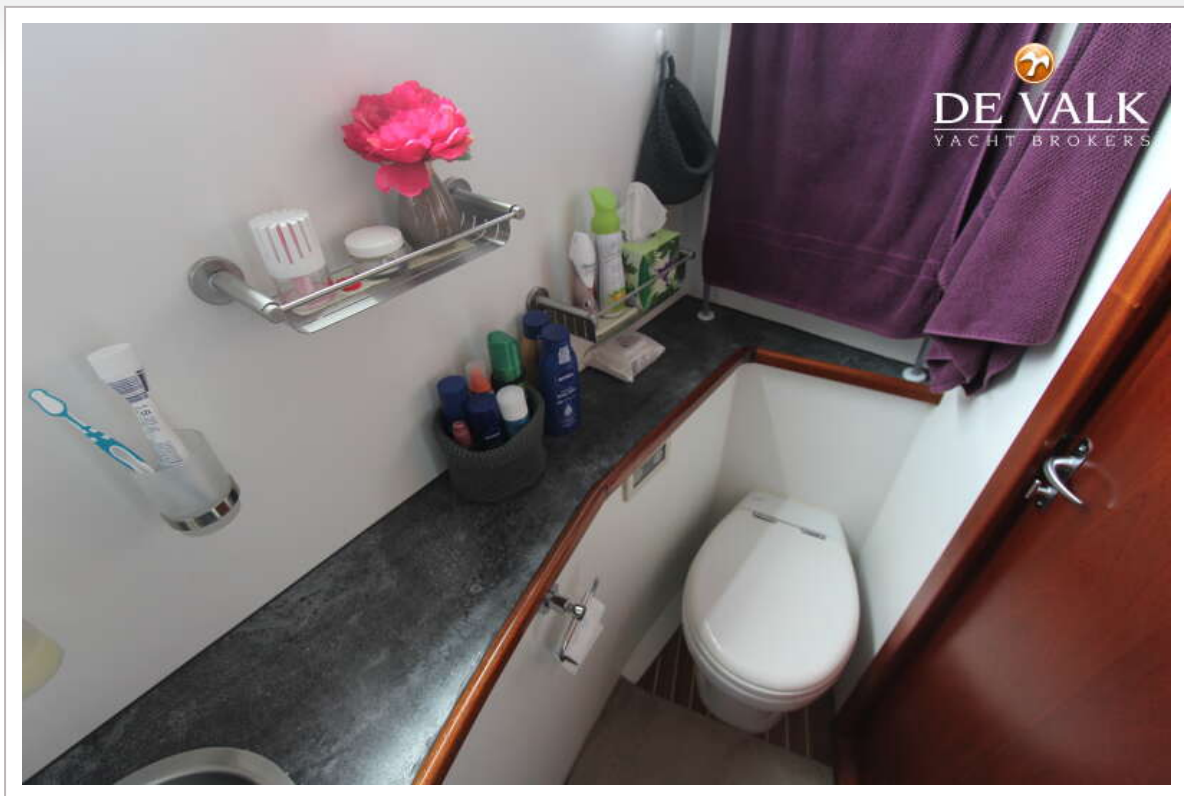
# CARLINE 1280



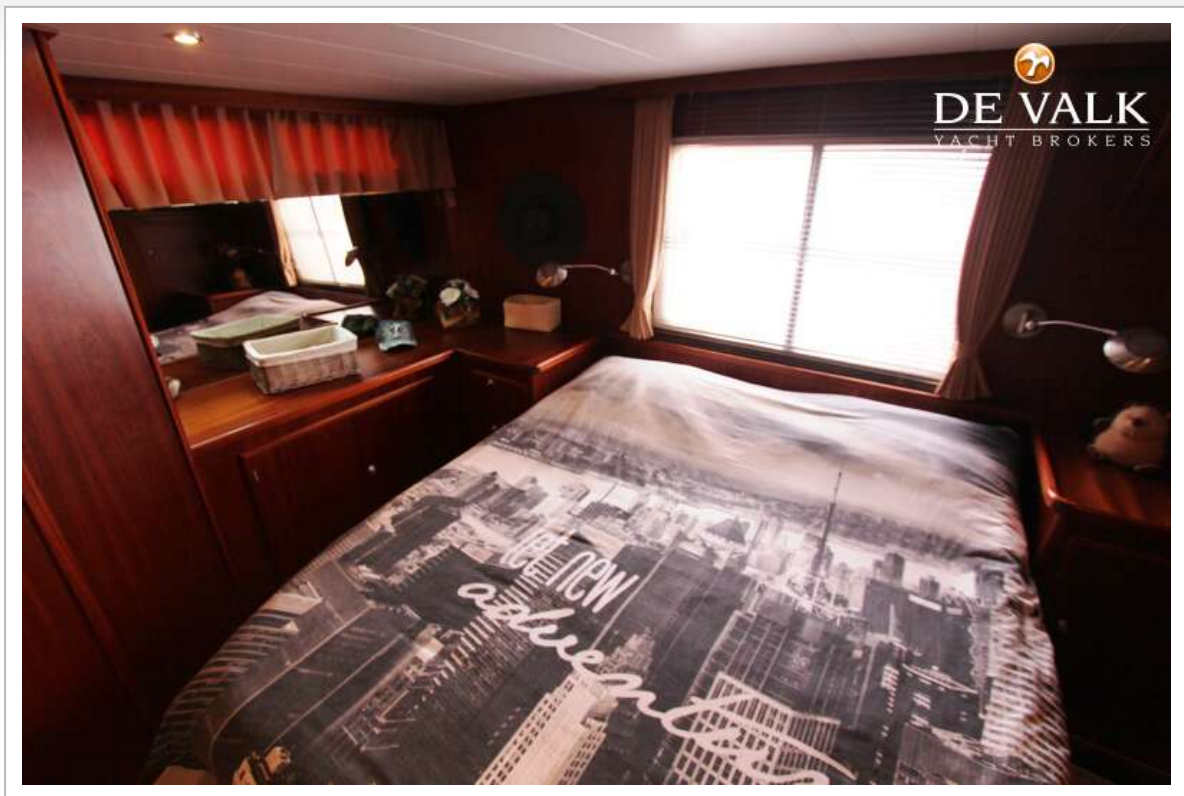




# CARLINE 1280



# CARLINE 1280



# CARLINE 1280

