



FEADSHIP CHEOPS



DE VALK
YACHT BROKERS

FEADSHIP CHEOPS

BROKER'S COMMENTS

FEADSHIP CHEOPS is the perfect example of what made the name of Feadship. FEADSHIP CHEOPS is the perfect travel companion to take you safe everywhere in the world. Her layout provides ample space for both entertaining your family and friends as provide enough privacy for the owner. Her authentic character with many safe seagoing featuresm like guardrails, ample secondary storage and strong sturdy construction is hard to find these days. The Feadship Cheops is easy to handle and maintain and is ready to take you anywhere

Hartmut Ross

SPECIFICATIONS

Dimensions	17.50 x 4.90 x 1.44 (m)	Builder	De Vries Aalsmeer
Built	1976	Cabins	2
Material	Steel	Berths	5
Engine(s)	2 x Ford Lehman diesel	Hp/Kw	2 x 120.00 (hp), 88.20 (kw)
Asking price	sold (VAT)	Lying	elsewhere / Not at sales office

CONTACT

Sales office	De Valk Kiel	Telephone	+49 1712312133
Address	Hermann Rennerstrasse 12 22609 Hamburg DE	E-mail	kiel@devalk.nl

DISCLAIMER

These particulars are given in good faith as supplied but cannot be guaranteed.



GENERAL

Model	FEADSHIP CHEOPS
Type	motor yacht
LOA (m)	17,50
Beam (m)	4,90
Draft (m)	1,44
Air draft (m)	9,00
Air draft min (m)	4,60
Headroom (m)	2,00
Year built	1976
Launched	1976
Builder	De Vries Aalsmeer
Country	The Netherlands
Designer	De Voogd
Displacement (t)	40
Hull material	steel
Hull colour	blue
Hull shape	round-bilged
Keel type	box keel
Superstructure material	steel
Deck material	steel
Deck finish	non-skid paint
Superstructure deck finish	non-skid paint
Cockpit deck finish	non-skid paint
Dorades	yes
Window frame	stainless steel
Window material	tempered glass
Deckhatch	yes
Portholes	
Insulation	foam plates
Flybridge	yes



Mast can be lowered	manual
Fuel tank (litre)	steel 4200
Level indicator (fuel tank)	yes
Freshwater tank (litre)	3200
Level indicator (freshwater)	yes
Blackwater tank (litre)	stainless steel 2 x 300
Level indicator (blackwater)	yes
Blackwater tank extraction	deck extraction + pump
Greywater tank (litre)	200
Level indicator (greywater)	yes
Wheel steering	mechanical
Inside helm position	yes
Flybridge helm position	mechanical
Emergency tiller	yes
Extra info	Overall paint in very good condition

ACCOMMODATION

Cabins	2
Berths	5
Interior	teak
Layout	Owner
Floor	carpet
Aft deck	yes
Pilot house/deck saloon	yes
Saloon	With addition hidden bed
Headroom saloon (m)	1,90
Heating	
Air-conditioning	reverse cycle airco
Navigation center	yes
Aft Cabin	yes
Dining room	In the lower salon and pilothouse



Sliding door to aft deck	Side decks
Galley	yes
Countertop	stainless steel
Sink	stainless steel Double
Cooker	electric AEG 4 burner
Oven	AEG
Extractor	yes
Fridge	yes
Freezer	yes
Hot water system	220V + engine
Water pressure system	electrical
Crockery	yes
Owners cabin	twin single
Bed length (m)	2 x 0,90
Wardrobe	hanging/drawers/shelves
Bathroom	en suite
Toilet	en suite
Toilet system	electric
Wash basin	in the bathroom
Shower	en suite
Guest cabin 1	twin single
Bed length (m)	2 x 0,90
Wardrobe	hanging/drawers/shelves
Bathroom	shared
Toilet	shared
Toilet system	electric
Wash basin	in the bathroom
Shower	shared
Washing machine	yes

MACHINERY



No of engines	2
Make	Ford
Type	Lehman
HP	120
kW	88,20
Fuel	diesel
Maximum speed (kn)	7
Cruising speed (kn)	9
Consumption (l/hr)	17
Engine hours	4900
Engine cooling system	freshwater heat exchanger
Drive	shaft
Shaft seal	yes
Engine controls	bowden cable
Gearbox	hydraulic
Bowthruster	
Propeller type	fixed
Propeller blades	4
Propeller shaft material	stainless steel
Shaft lubrication	grease
Manual bilge pump	yes
Electric bilge pump	yes
Electrical installation	12 & 24 V DC & 230 & 400 V 50 Hz AC
Generator	wet exhaust Vetus 11 Kw
Running hours generator	900
Batteries	yes
Start battery	yes
Service battery	yes
Windlass battery	yes
Battery monitor	yes
Battery charger	yes
Inverter	yes



Diode battery combiners	yes
Shorepower	with cable
Watermaker	yes

NAVIGATION

Compass	yes
Compass on flybridge	yes
Electric compass	yes
Multi control display	yes
Depth sounder	Raymarine
Log	Raymarine
Windset	Brooks & Gatehouse
Repeater	On Fly bridge
VHF	Simrad
Autopilot	Raymarine with 2nd station on fly
Rudder angle indicator	yes
Radar	Simrad (Furuno display out of order)
GPS	Simrad
Plotter	Simrad
Weather receiver	Fastnet Radio out of order
Navigation lights	yes
Searchlight	yes
Loudhailer	Intercom and automated fog horn

EQUIPMENT

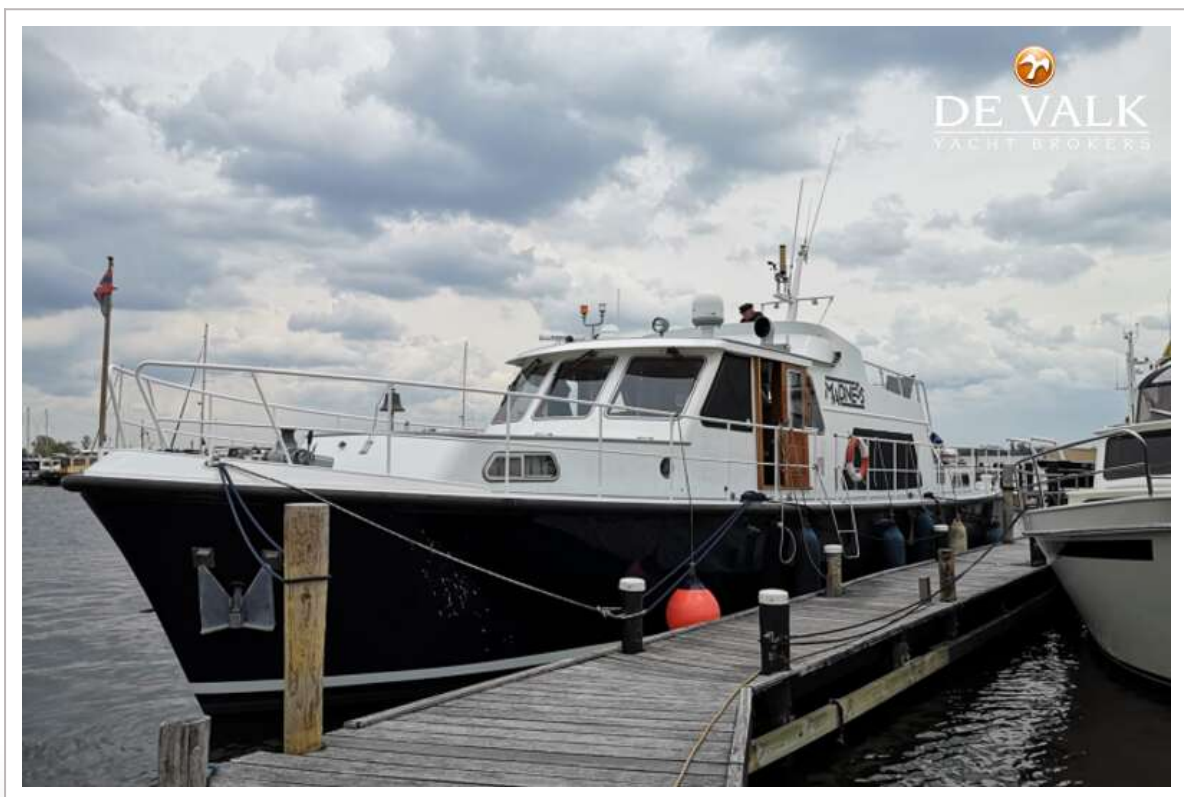
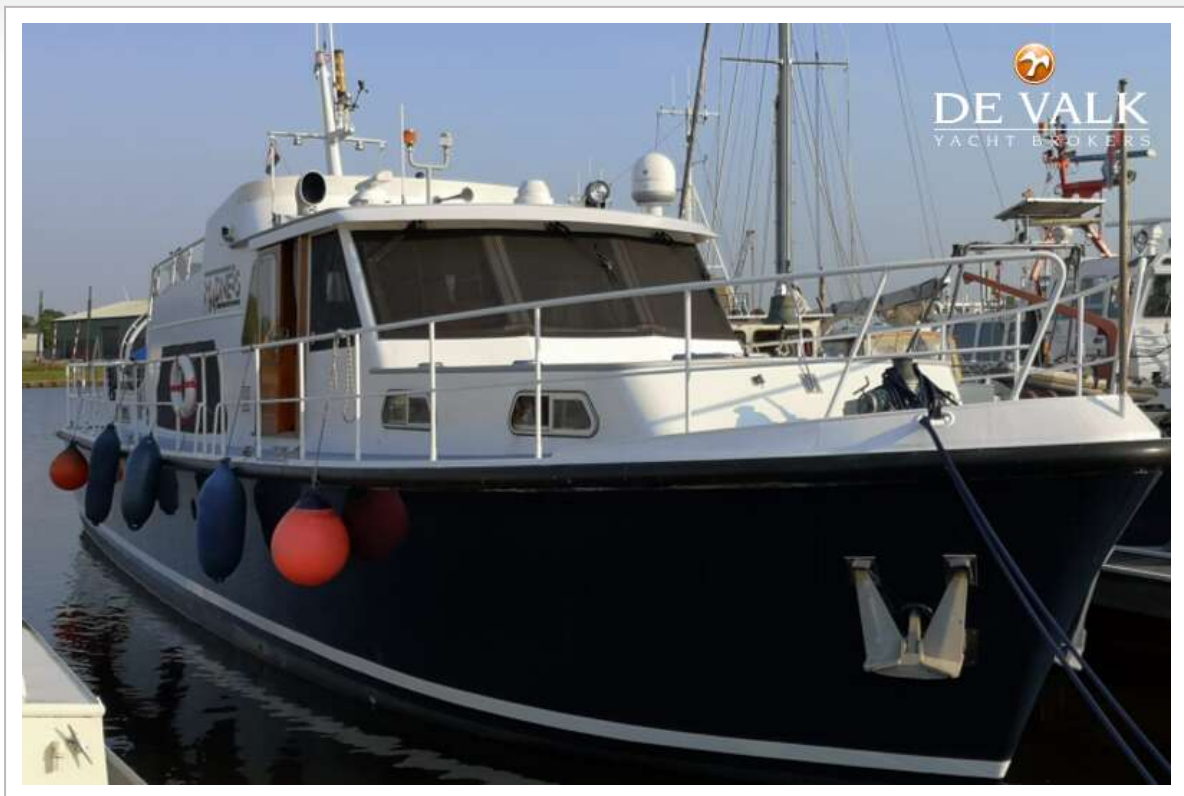
Fixed windscreen	yes
Storm blinds	For Portholes
Sun awning	yes
Cockpit cushions	For Fly
Cockpit table	On Fly
Cockpit chairs	On Fly bridge



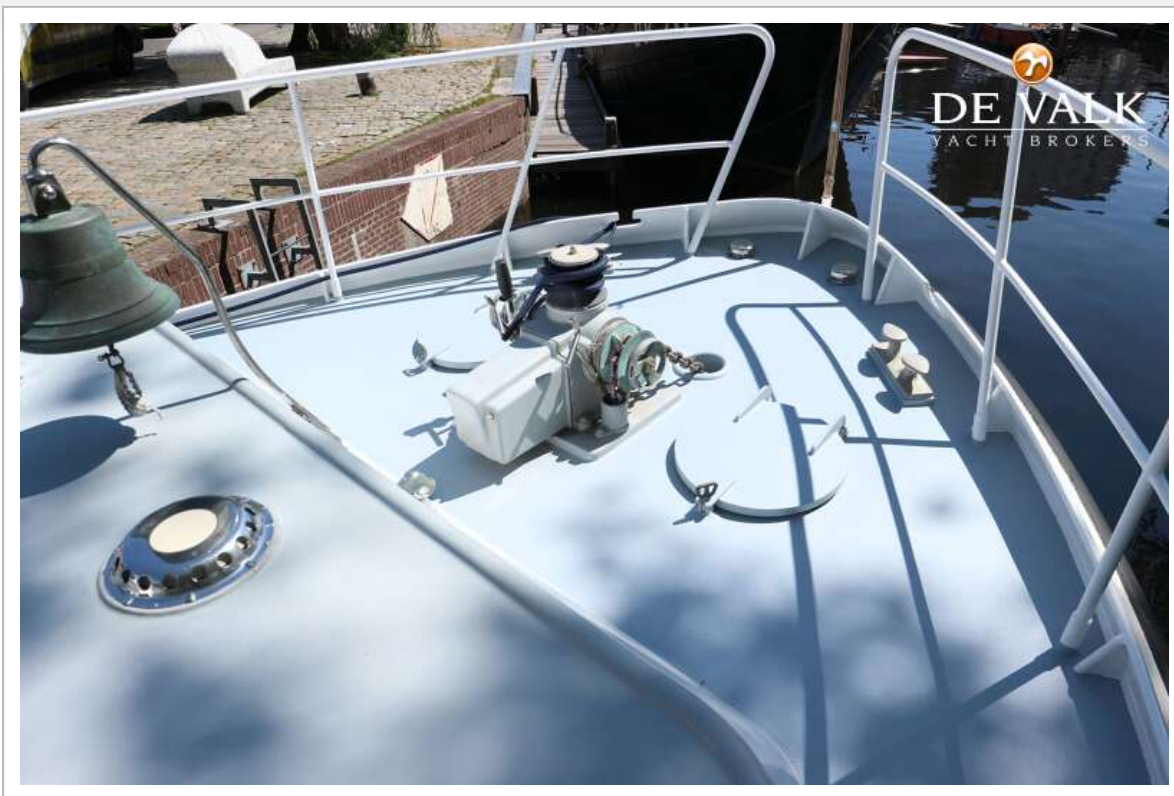
Bathing platform	yes
Boarding ladder	aluminum
Transom door	yes
Anchor	
Anchor chain	yes
Windlass	electrical Twin plus capstan
Capstan	yes
Windlass aft	electrical
Dinghy	3,20
Outboard	5 hp only 6 hours
Deck crane	manual
Sea railing	
Grab rail (superstructure)	steel
Railing side opening gates	yes
Pushpit	yes
Pulpit	yes
Life raft	Needs service
Life raft (pers)	container 6
Last life raft survey	Needs service
Wiper	3 x
Radar reflector	yes
Fenders	yes
Mooring lines	yes
Spare parts	yes
Tools	yes
TV	yes
TracVision ball	yes
Radio	yes
Speakers in salon	yes
Speakers in cabin	yes
Clock - barometer	yes
Fire extinguisher	yes

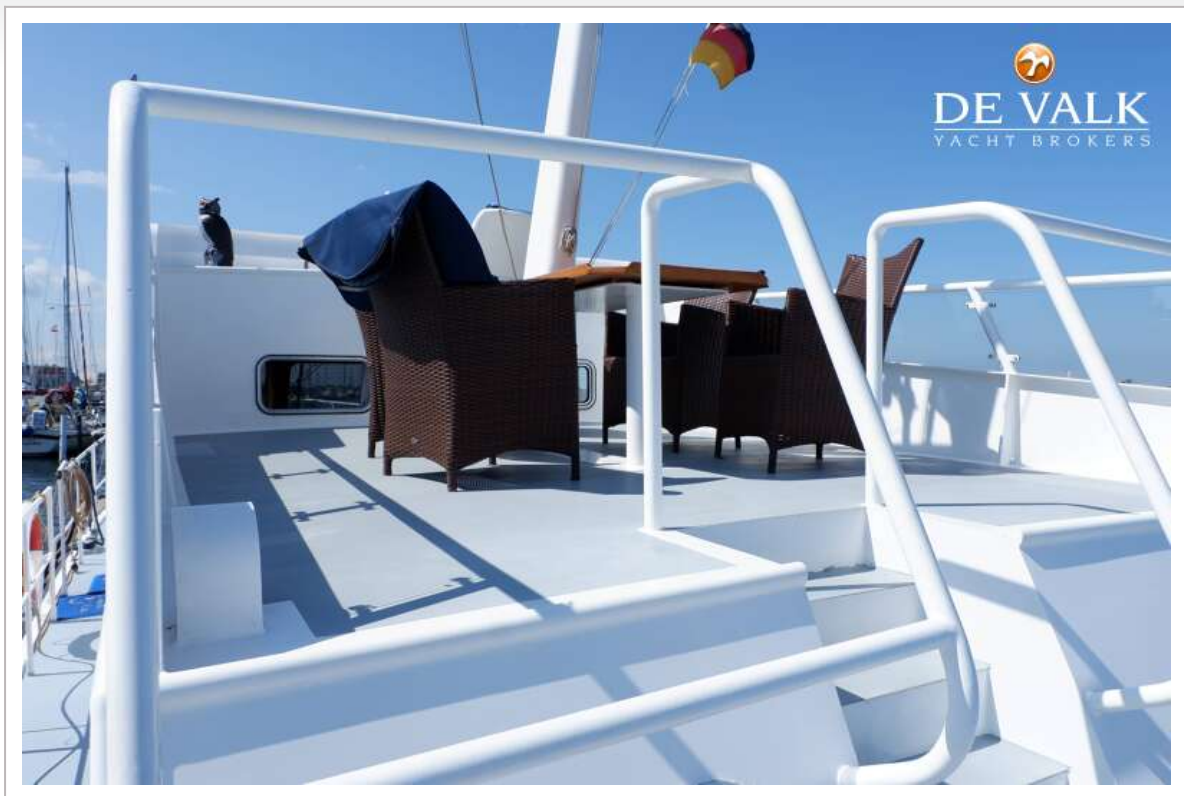




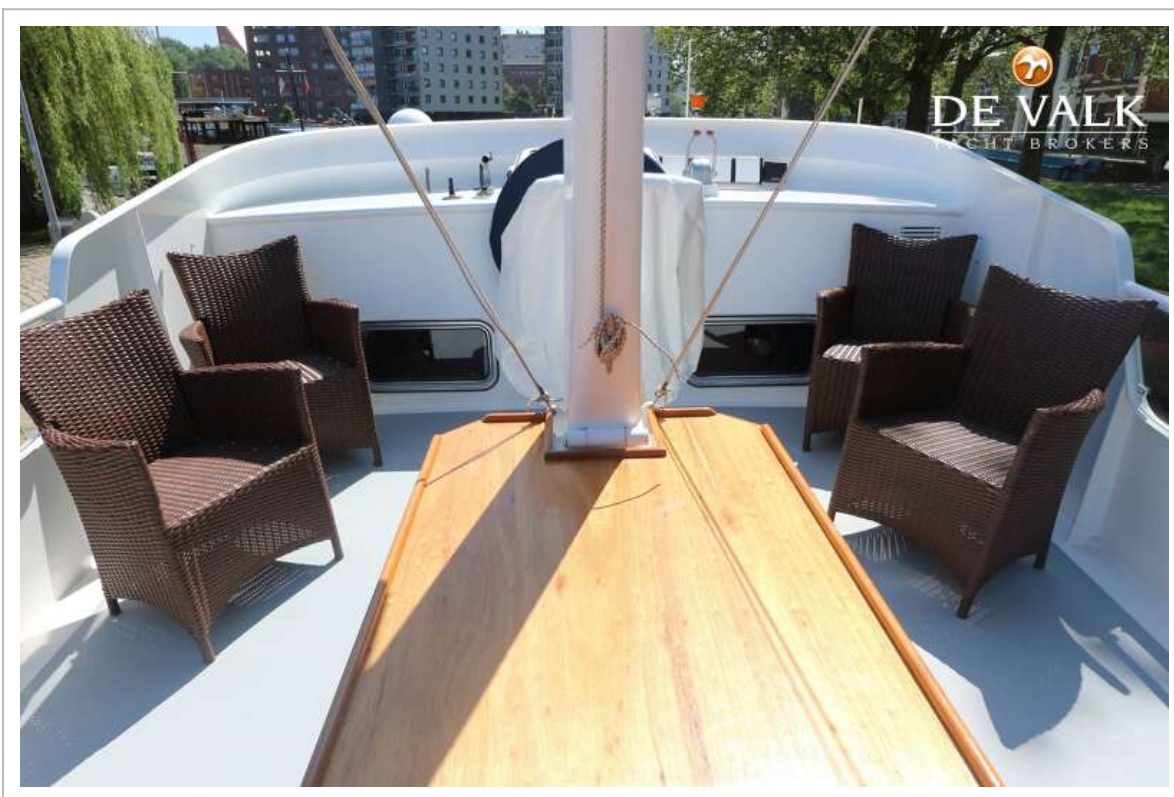


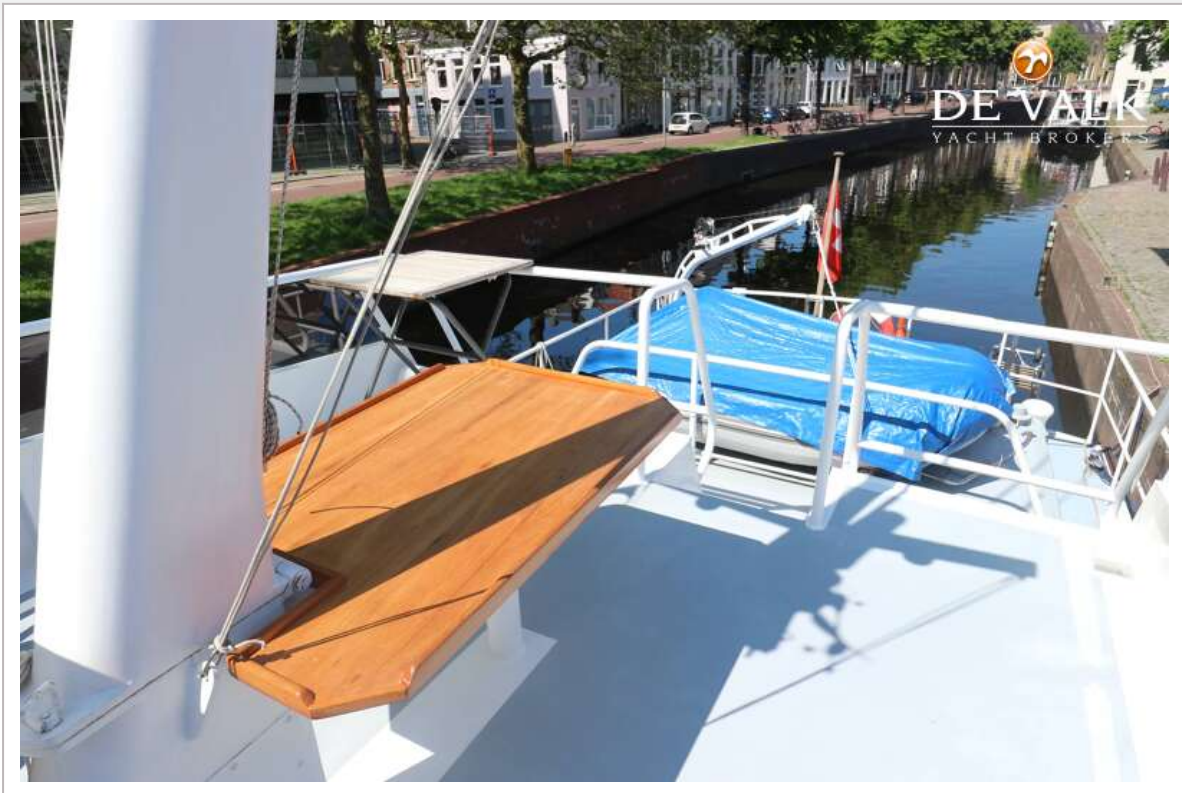


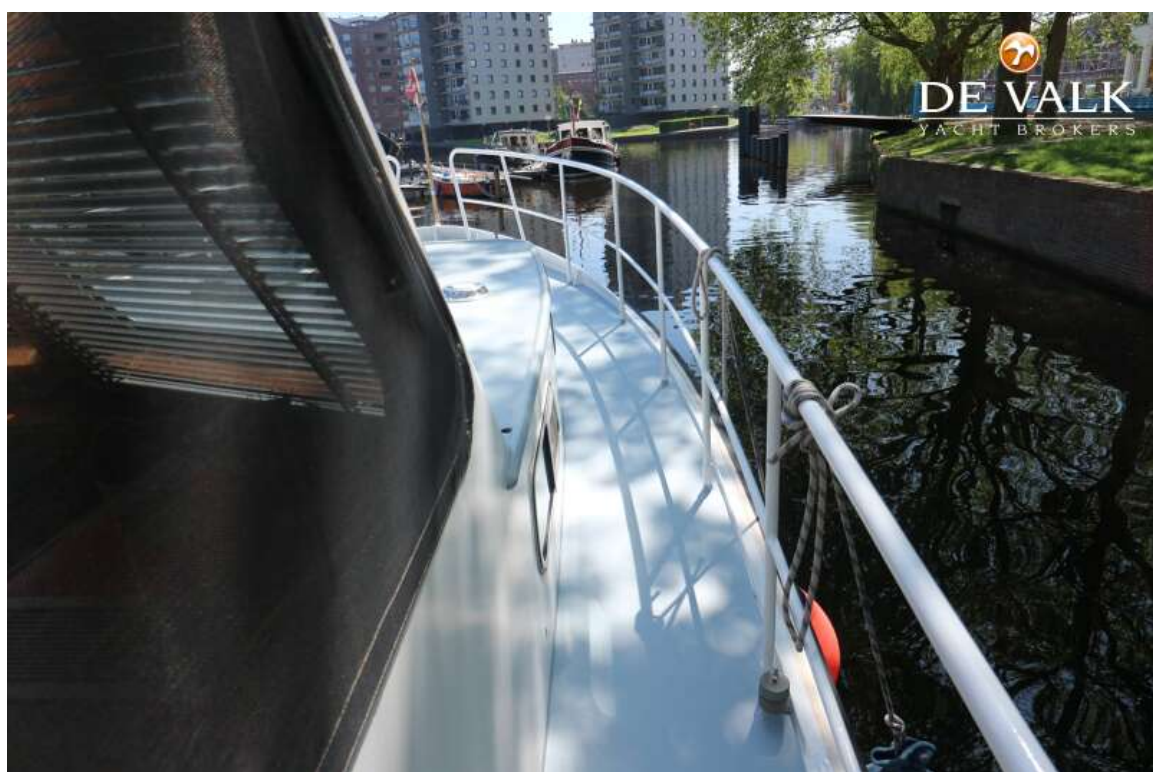




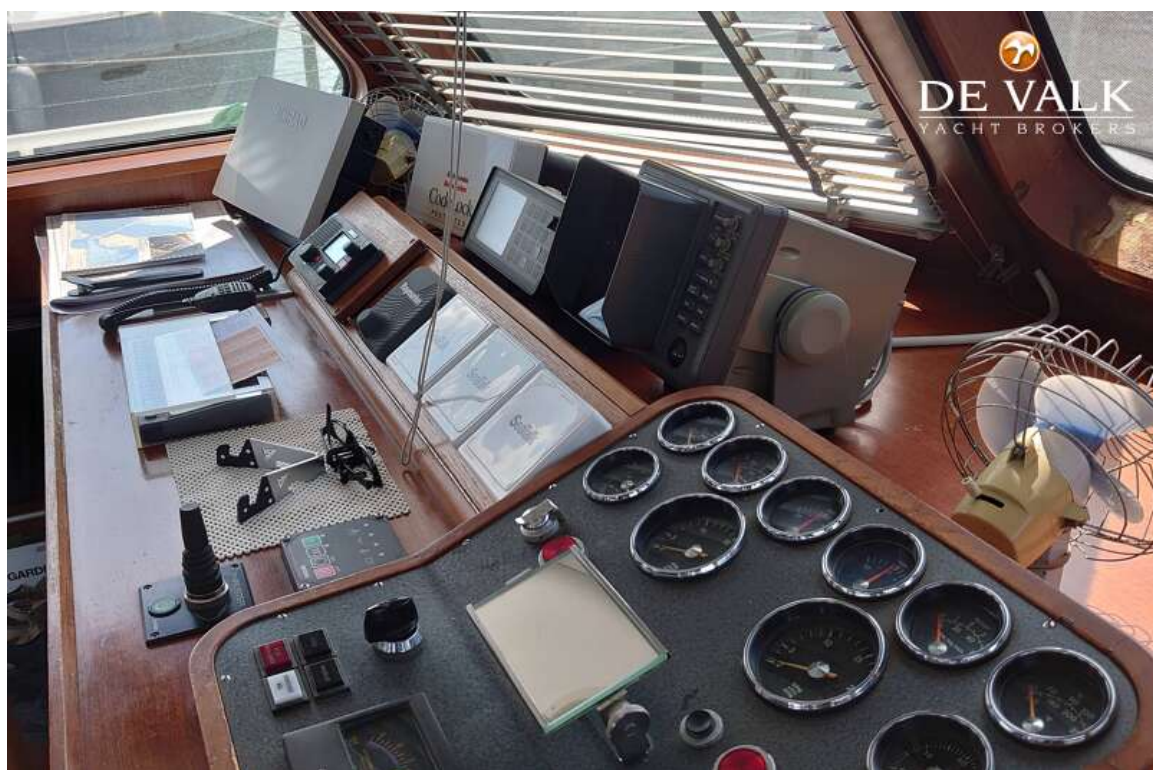




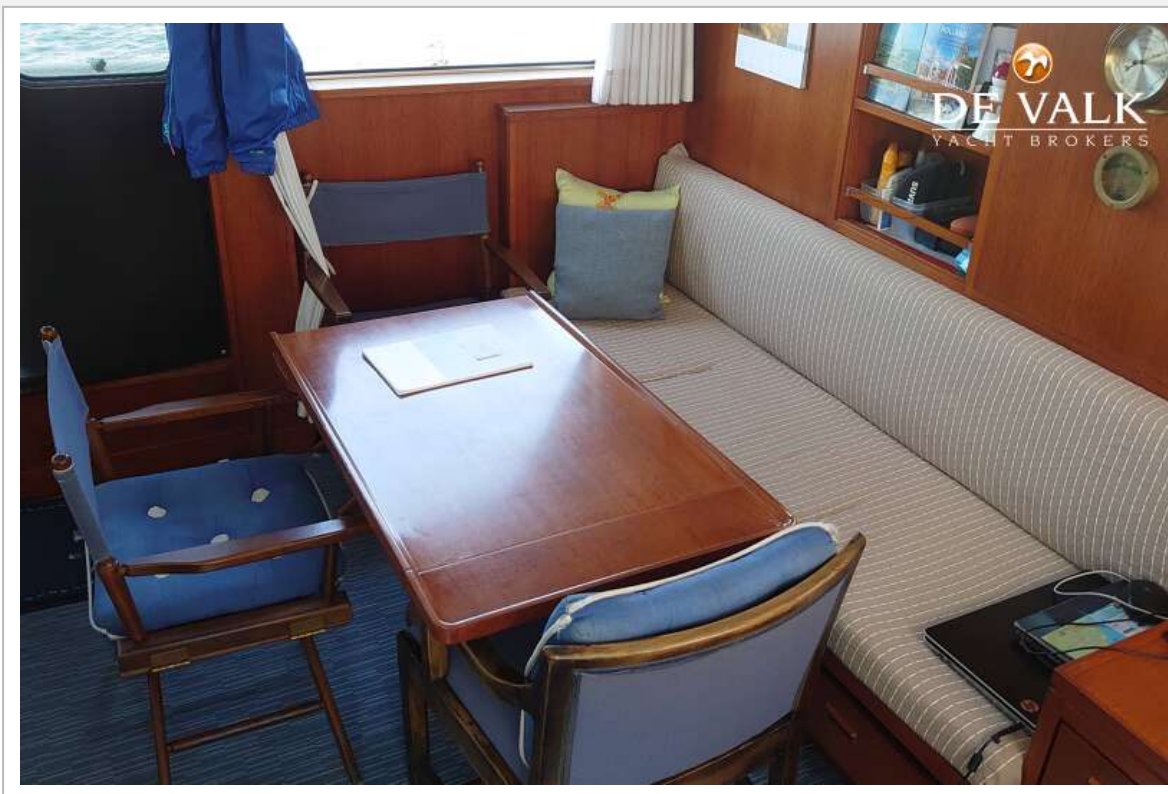




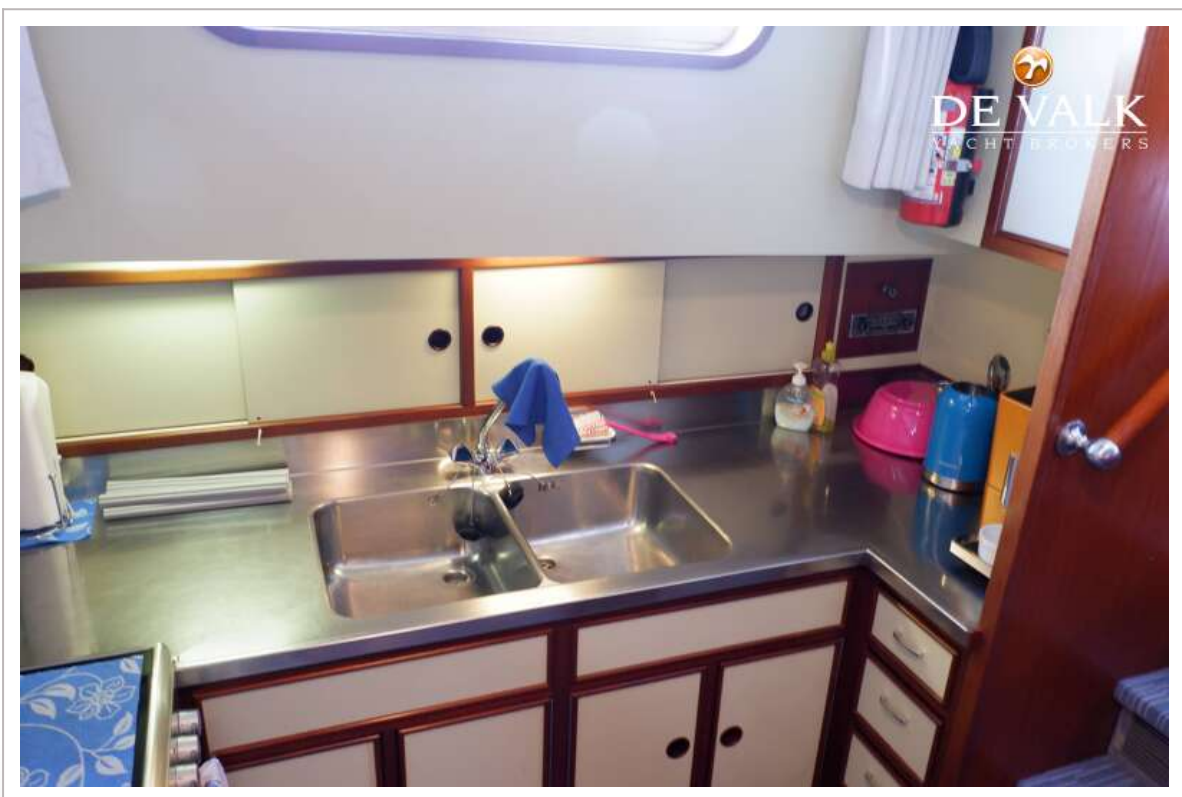


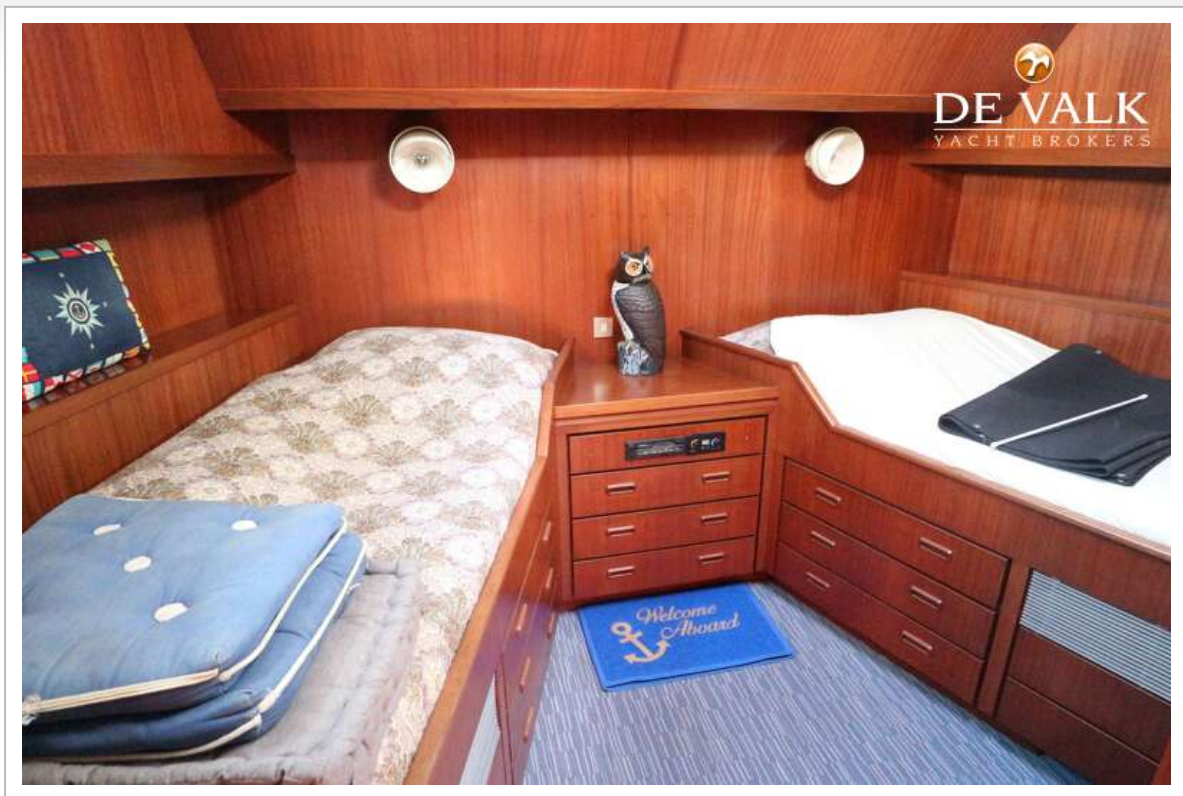


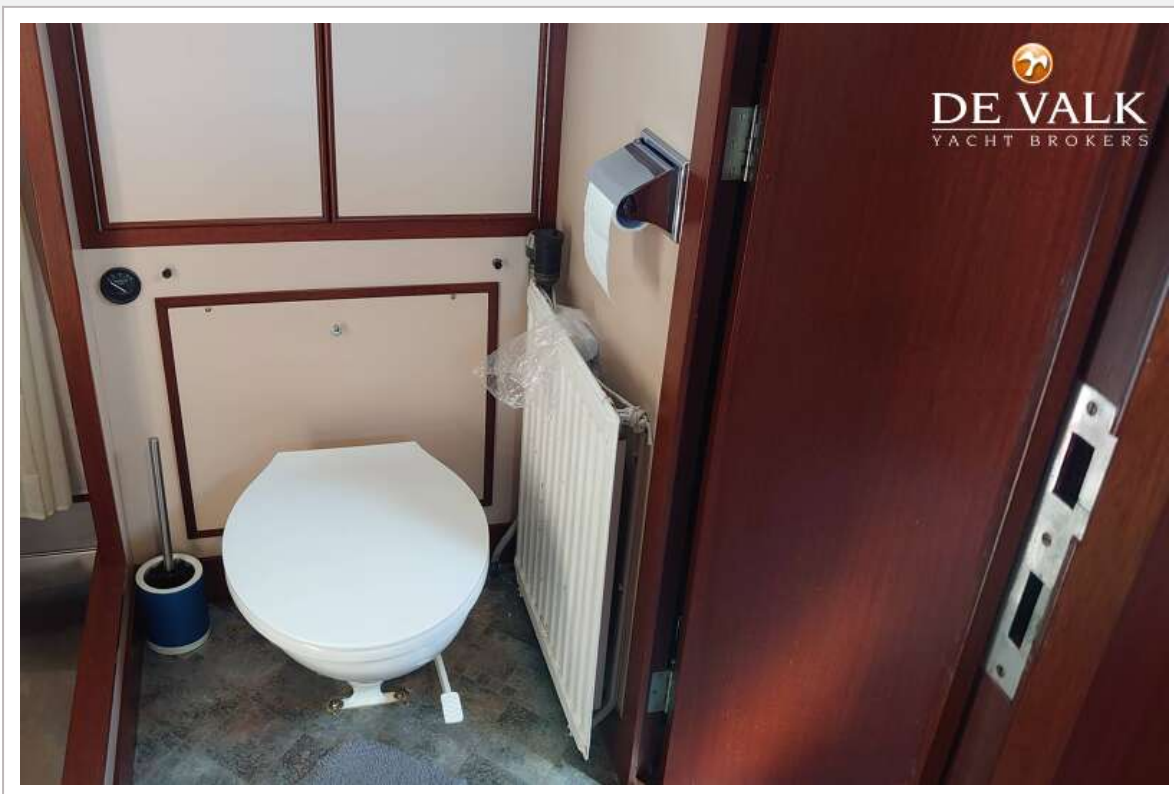


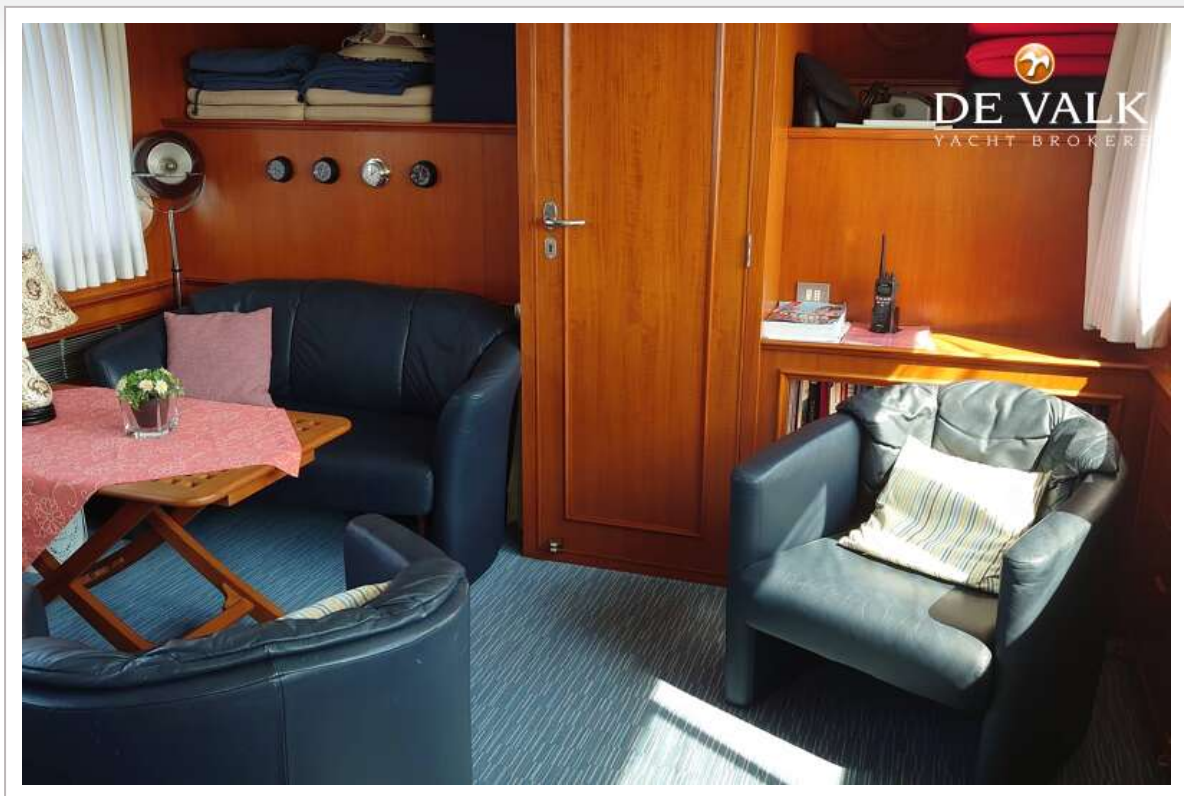


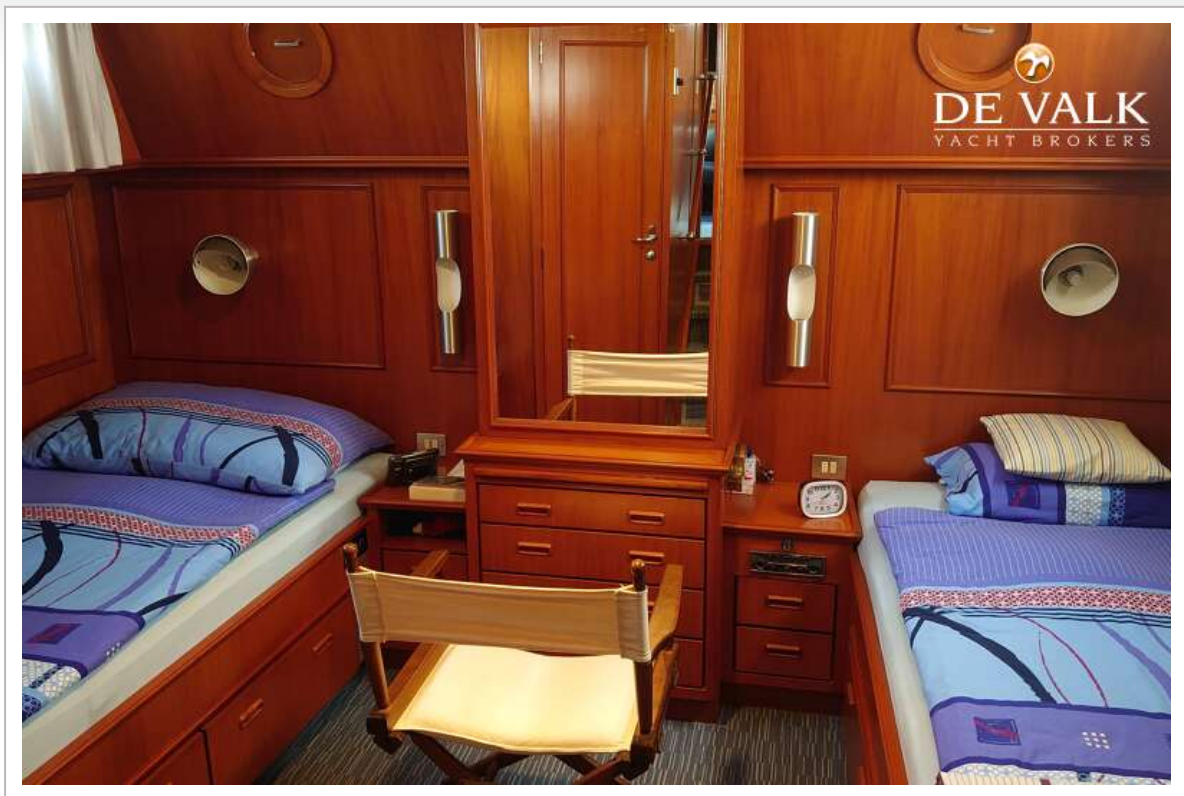


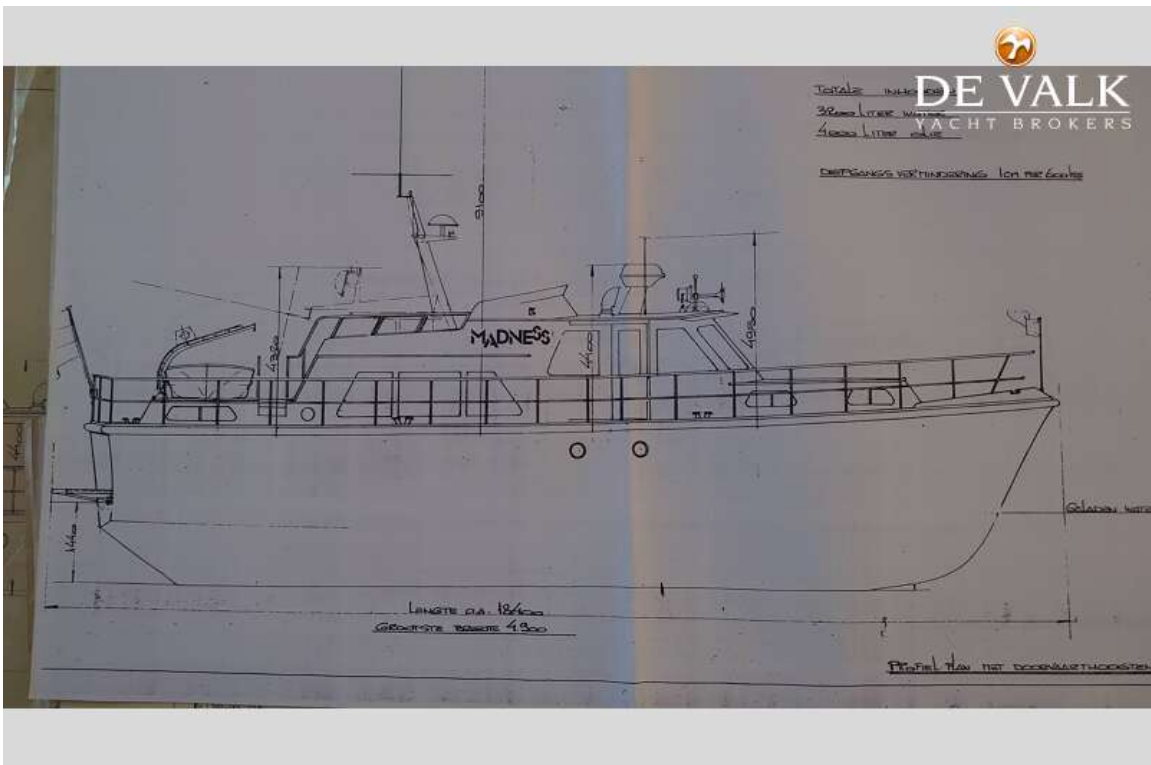


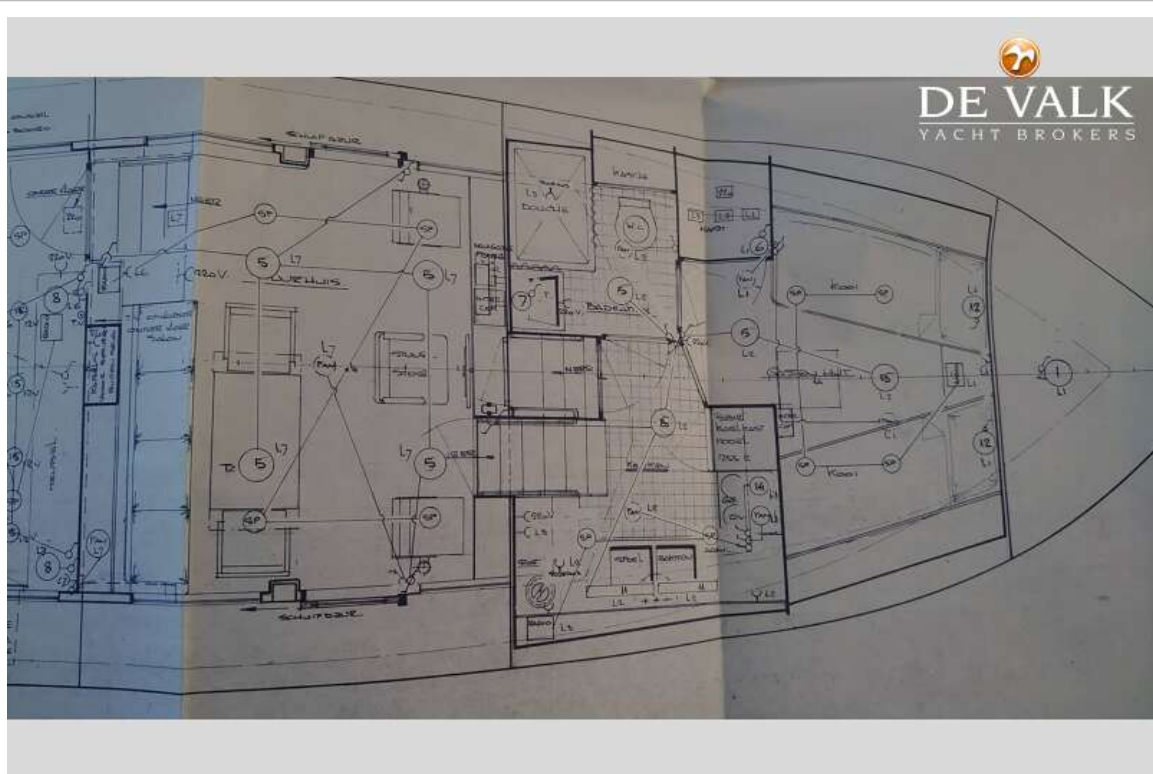
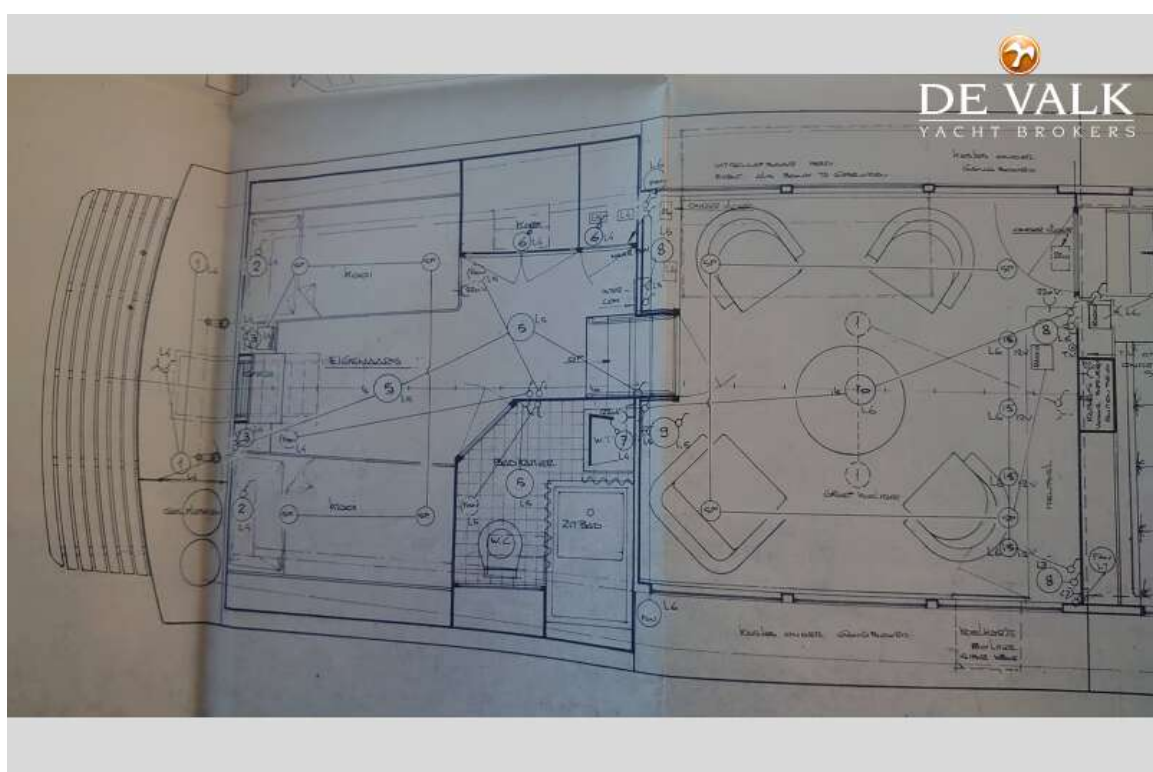












FEADSHIP CHEOPS

