



## LONG RANGE EXPEDITION ICEBREAKER



**DE VALK**  
YACHT BROKERS

# LONG RANGE EXPEDITION ICEBREAKER

## BROKER'S COMMENTS

Icebreaker "Thorbjorn", build at the Svendborg Shipyard in 1980 with the goal: build an Icebreaker with the best of equipment of the time. Ice Class 1A, world wide trading area A2. Large aftdeck of around 250 sqm. Accomodation for 32 persons in 26 single and three double cabins, cabins with private bathrooms. 2 B&W Alpha diesel engines, bowthruster, three generators. "Thorbjorn" is constandly maintained by a full time crew, ready to go. Also very interesting ship for Icebreaker cruises, conversion to a mega yacht, hotel ship, etc

*Pieter Bosma*

## SPECIFICATIONS

<b>Dimensions</b>	67.55 x 15.30 x 4.70 (m)	<b>Builder</b>	Svendborg Shipyard AS
<b>Built</b>	1980	<b>Cabins</b>	29
<b>Material</b>	Steel	<b>Berths</b>	32
<b>Engine(s)</b>	2 x B&W Alpha 12U28LU diesel	<b>Hp/Kw</b>	2 x 3,180.00 (hp), 2,337.30 (kw)
<b>Asking price</b>	€ 7.950.000 (VAT Not paid)	<b>Lying</b>	contact Sneek

## CONTACT

<b>Sales office</b>	De Valk Sneek	<b>Telephone</b>	+31 (0)515 42 80 30
<b>Address</b>	Zwolsmanweg 7 8606 KC Sneek NL	<b>E-mail</b>	sneek@devalk.nl

## DISCLAIMER

These particulars are given in good faith as supplied but cannot be guaranteed.



# LONG RANGE EXPEDITION ICEBREAKER

## GENERAL

Model	LONG RANGE EXPEDITION ICEBREAKER
Type	motor yacht
LOA (m)	67,55
Beam (m)	15,30
Draft (m)	4,70
Year built	1980
Builder	Svendborg Shipyard AS
Country	Denmark
Displacement (t)	649
CE norm	NA
Hull material	steel
Hull colour	black
Hull thickness (mm)	10mm - 25mm All bow plates are 25mm
Hull shape	round-bilged
Superstructure material	steel
Rubbing strake	steel
Deck material	steel
Deck finish	non-skid paint
Window material	tempered glass
Portholes	yes
Fuel tank (litre)	887,65 m3
Level indicator (fuel tank)	yes
Freshwater tank (litre)	100,60 m3
Level indicator (freshwater)	yes
Blackwater tank (litre)	No holding tank, There is a sewage treatment arrangement
Wheel steering	hydraulic Acta power steering
Inside helm position	yes
More info on hull	Ballast water capacity 798,00 M3
Extra info	Aftdeck rebuild for helideck
Extra info	Air bobbeling system



# LONG RANGE EXPEDITION ICEBREAKER

## Extra info

Ice Class 1A

## ACCOMMODATION

Cabins	29
Berths	32
Floor	vinyl Carpet in the cabins
Saloon	2 x crew mess/living room
Heating	yes
Air-conditioning	yes
Galley	2 galley's
Countertop	stainless steel
Sink	stainless steel
Cooker	electric 6 burneer
Oven	yes
Extractor	yes
Microwave/oven combi	yes
Fridge	Storage room fridge, Fridge in the galley
Freezer	Storage room freezer
Hot water system	yes
Water pressure system	electrical
Dishwasher	KEV
Guest cabin 1	3 x double cabins with private bathroom
Wardrobe	yes
Bathroom	en suite
Toilet	yes
Wash basin	yes
Shower	yes
Guest cabin 2	26 x single rooms with bathroom
Wardrobe	yes
Bathroom	en suite
Toilet	yes



# LONG RANGE EXPEDITION ICEBREAKER

Wash basin	yes
Shower	yes
Washing machine/dryer combi	Laundry room with washingmachine and dryer
Sauna	yes
Extra info	Hospital

## MACHINERY

No of engines	2
Make	B&W Alpha
Type	12U28LU
HP	3180
kW	2337.30
Fuel	diesel
Year installed	1980
Maximum speed (kn)	16,4
Range (nm)	9000
Engine hours	10000
Engine cooling system	freshwater heat exchanger
Drive	shaft
Engine controls	pneumatic
Gearbox	hydraulic
Bowthruster	electric Berg Propulsion 500HP
Exhaust	watercooled
Propeller type	fixed
Propeller blades	4 bladed
Propeller shaft material	steel
Shaft lubrication	yes
Electric bilge pump	yes
Generator	Three Cummings KTA 1150G generators
Running hours generator	The hours of the three generator are around 10.500 hrs (09-2021)



# LONG RANGE EXPEDITION ICEBREAKER

Generator 2	Backup generator room
Shorepower	with cable
Extra info	Towing equipment on the aftdeck

## NAVIGATION

Compass	Anschutz compass
Electric compass	Anschutz
Depth sounder	Elac LAZ 5000
VHF	Sailor VHF and SSB
Rudder angle indicator	Decca
Radar	Furuno
GPS	Furuno GPS Navigator GP-150
Plotter/GPS	Hanten, Shipmate RS5900 GPS color chartplotter
Navtex	Shipmate RS6100
AIS transponder	Sailor 6400
Navigation lights	yes
Searchlight	2x

## EQUIPMENT

Anchor	yes
Anchor chain	yes
Anchor 2	yes
Anchor chain	yes
Windlass	electrical
Windlass aft	electrical
Dinghy	Sloop for 32 persons and rigid inflatable
Davits	For launching the sloop
Deck crane	electric
Sea railing	yes
Life raft	yes
Clearview window	2 x



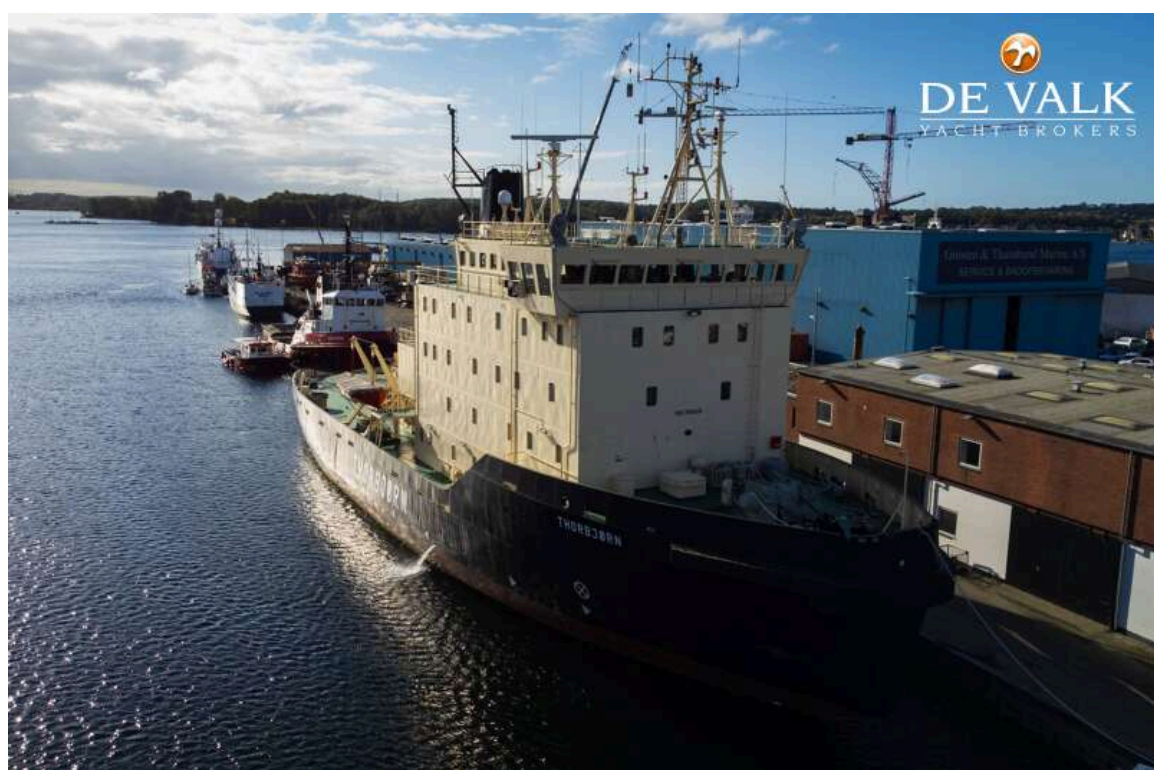
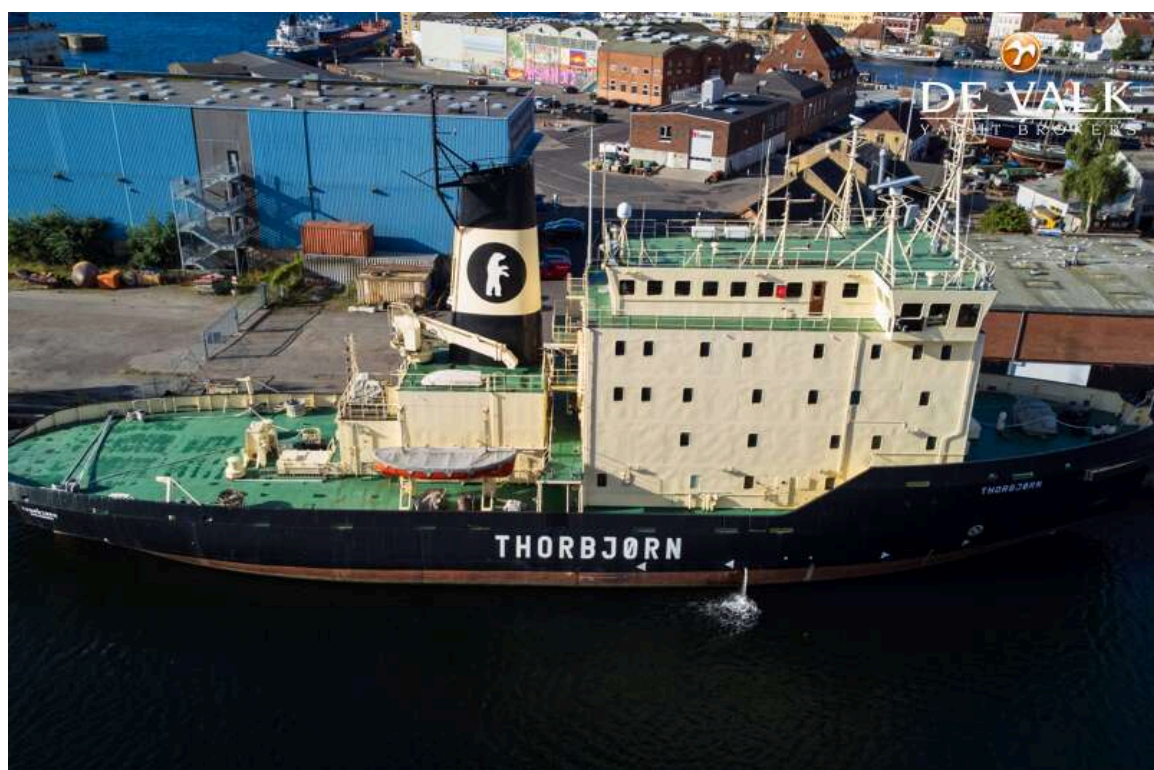
# LONG RANGE EXPEDITION ICEBREAKER

Horn	yes
Spare parts	yes
Tools	yes
TV	Samsung
TV receiver	yes
Radio	JVC receiver
Radio-cd player	Blaupunkt
Clock - barometer	Viking Clock and barometer
Fire extinguisher	yes
Extinguisher in engine room	yes





# LONG RANGE EXPEDITION ICEBREAKER

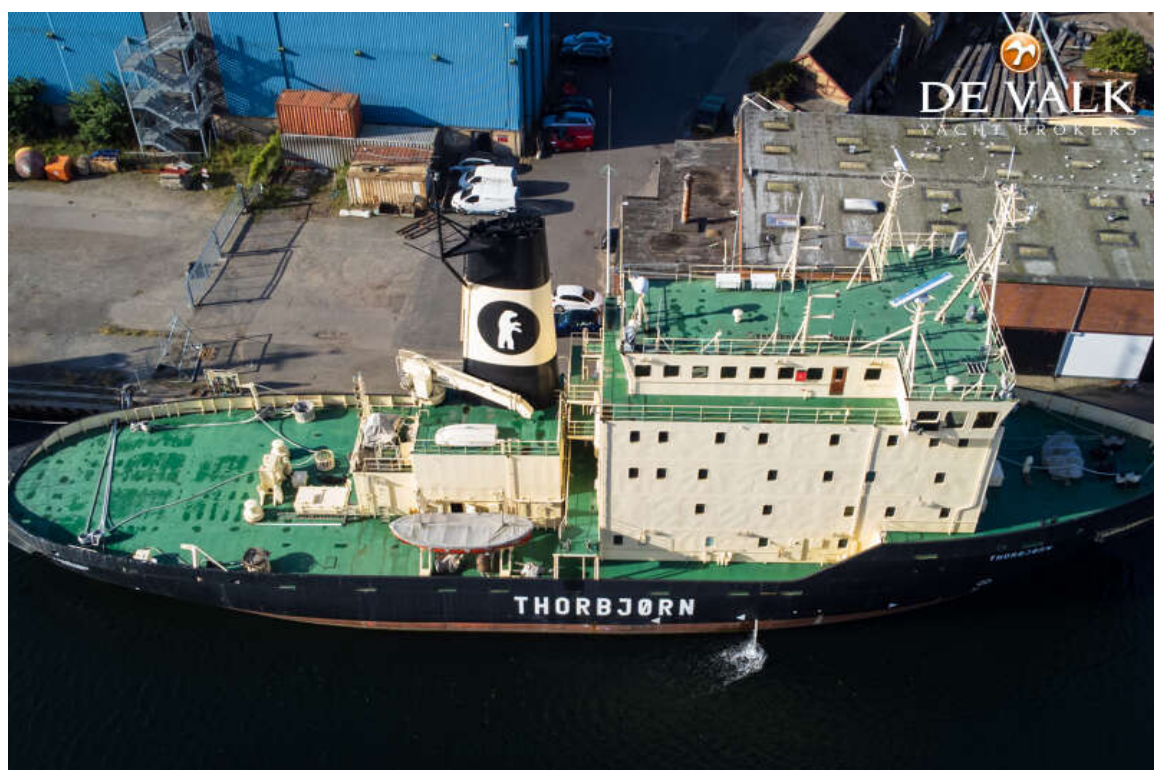




# LONG RANGE EXPEDITION ICEBREAKER

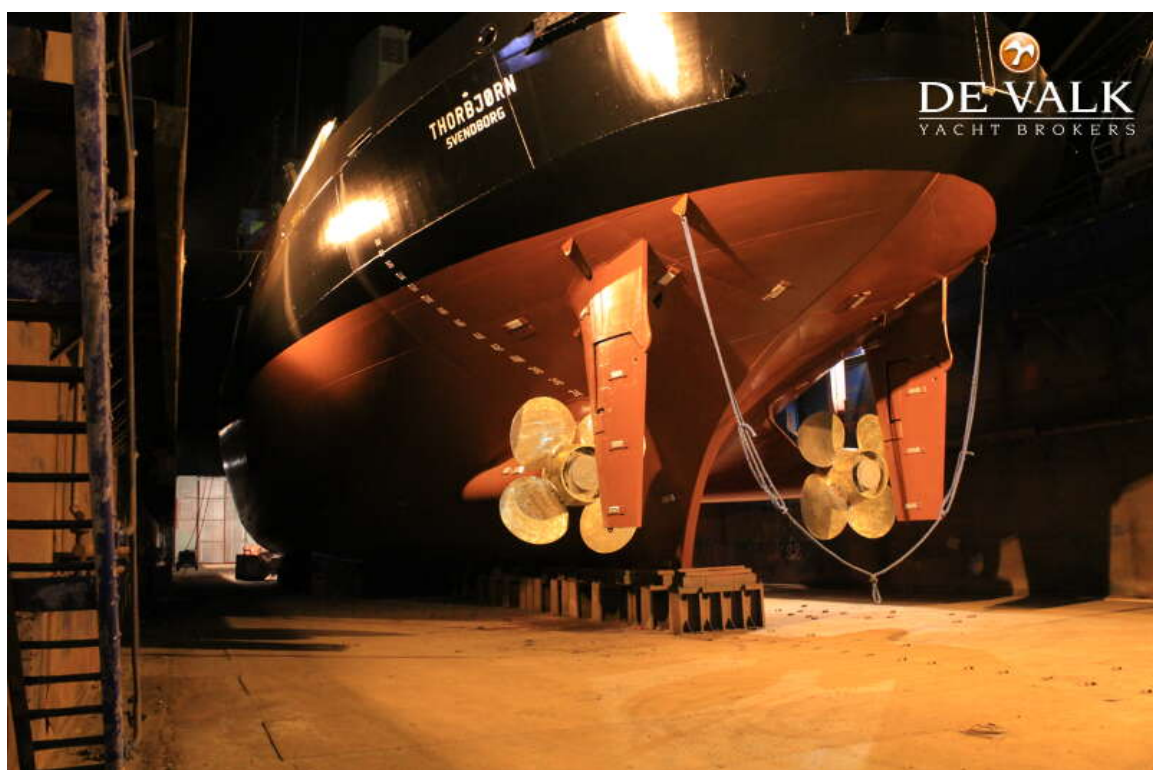


# LONG RANGE EXPEDITION ICEBREAKER





# LONG RANGE EXPEDITION ICEBREAKER



# LONG RANGE EXPEDITION ICEBREAKER

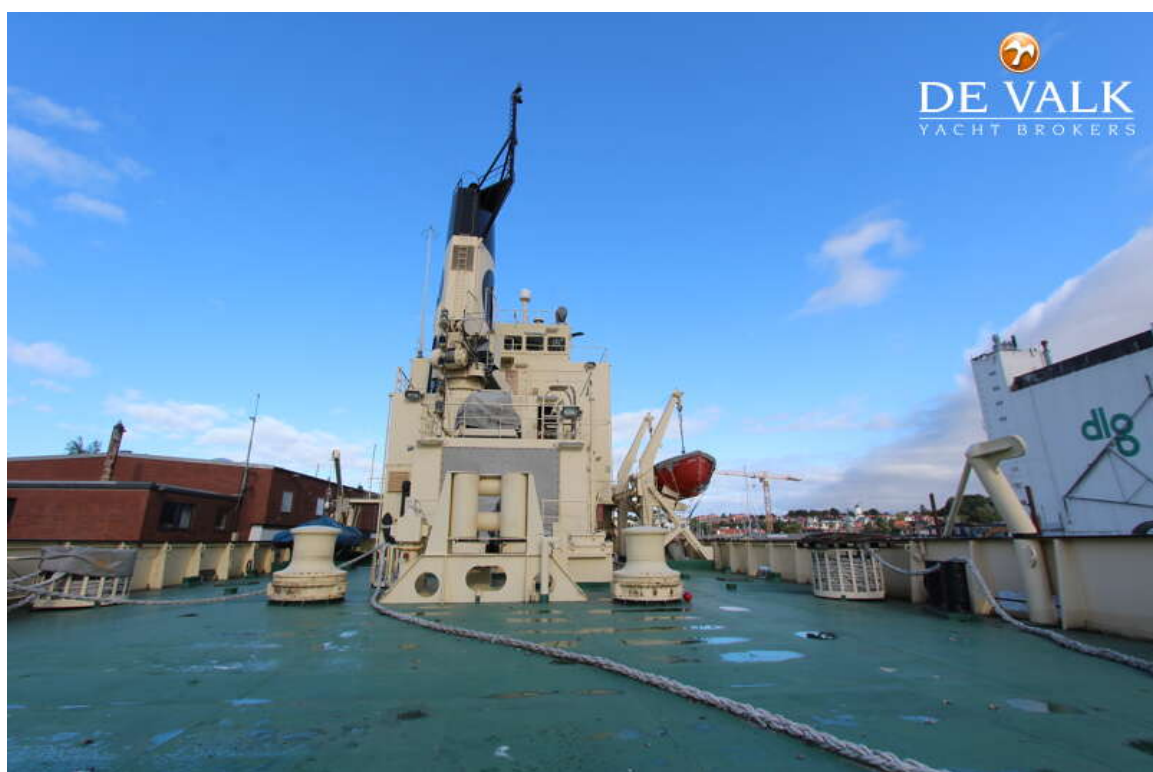




# LONG RANGE EXPEDITION ICEBREAKER

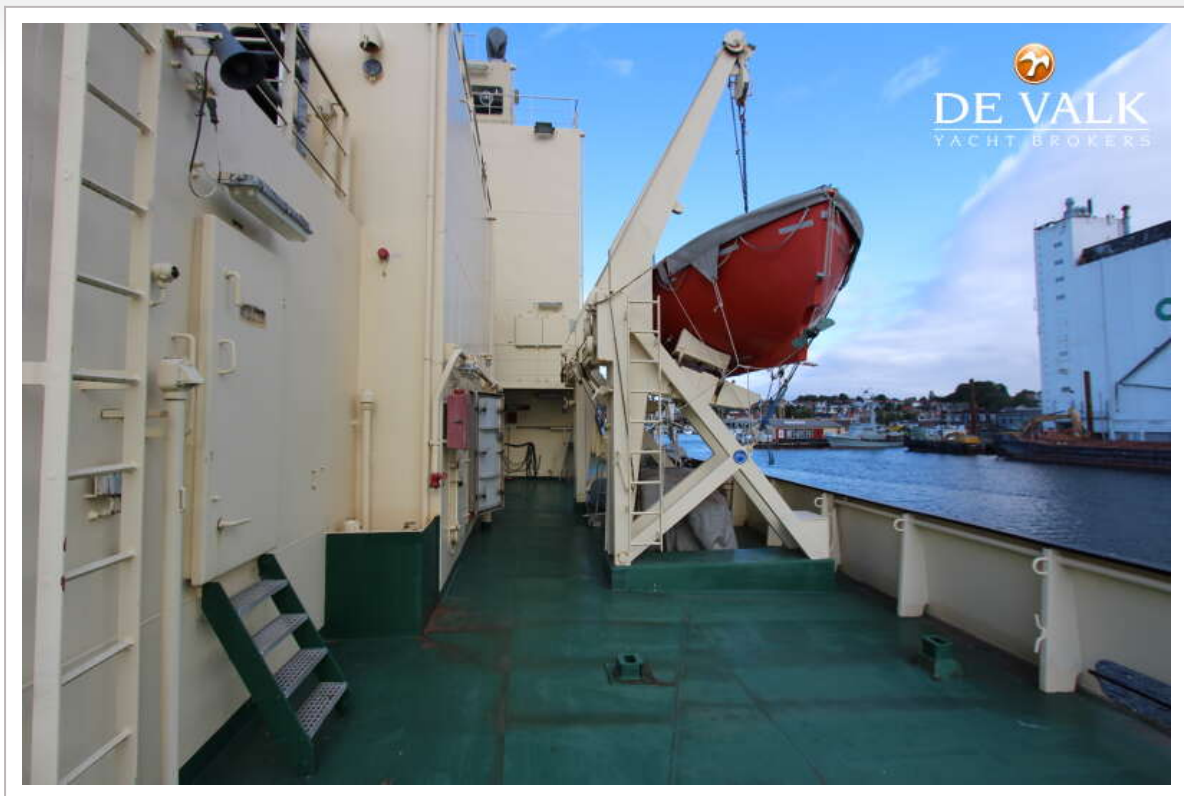


# LONG RANGE EXPEDITION ICEBREAKER

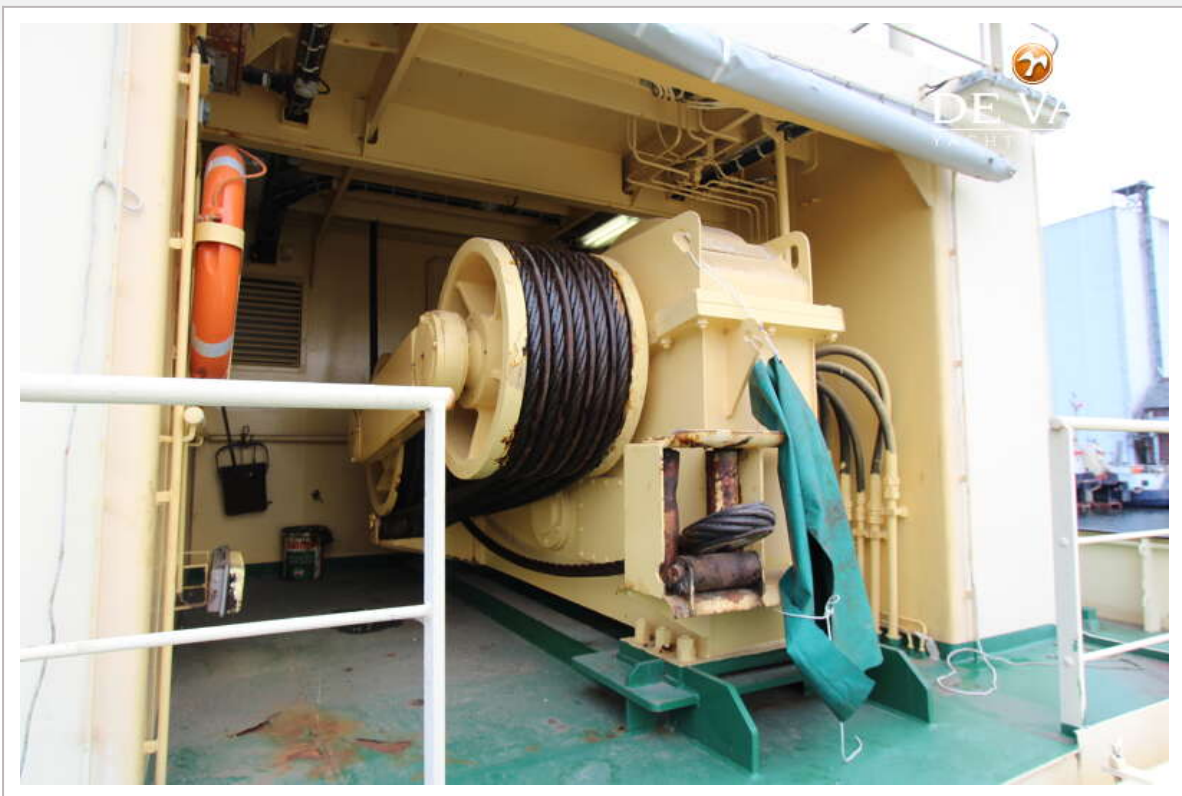




# LONG RANGE EXPEDITION ICEBREAKER



# LONG RANGE EXPEDITION ICEBREAKER

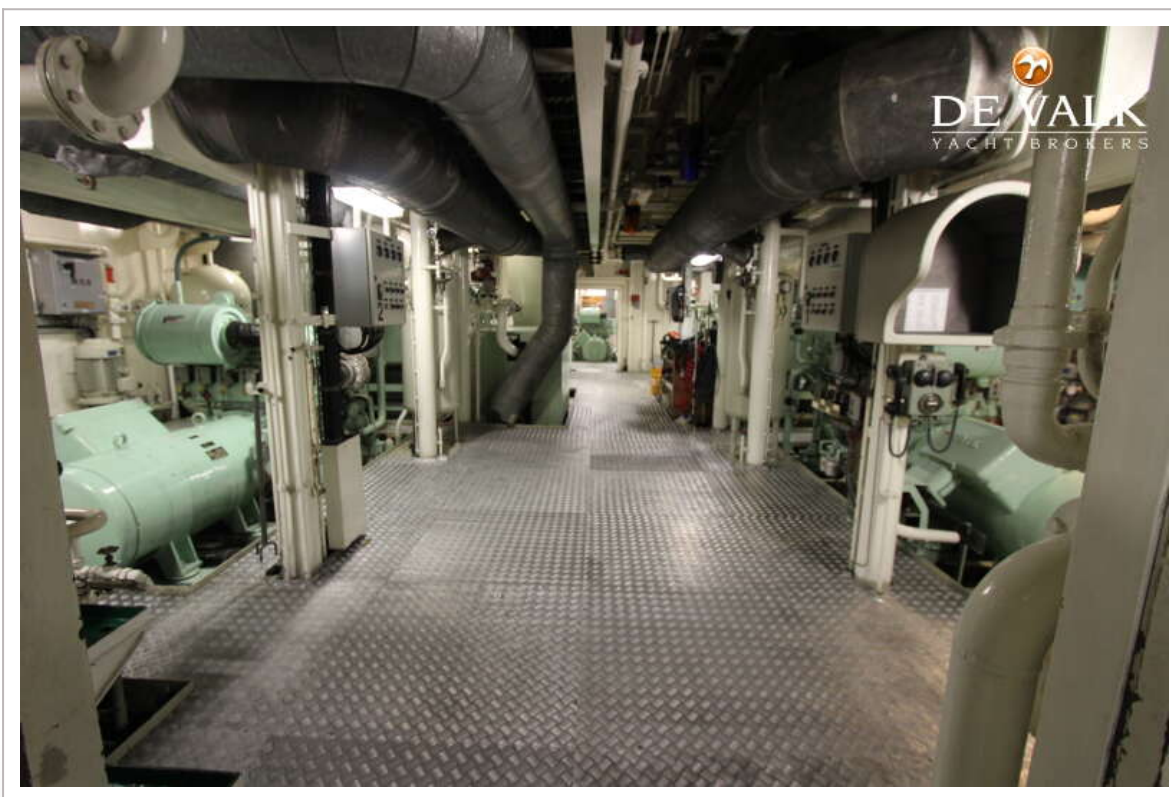




# LONG RANGE EXPEDITION ICEBREAKER

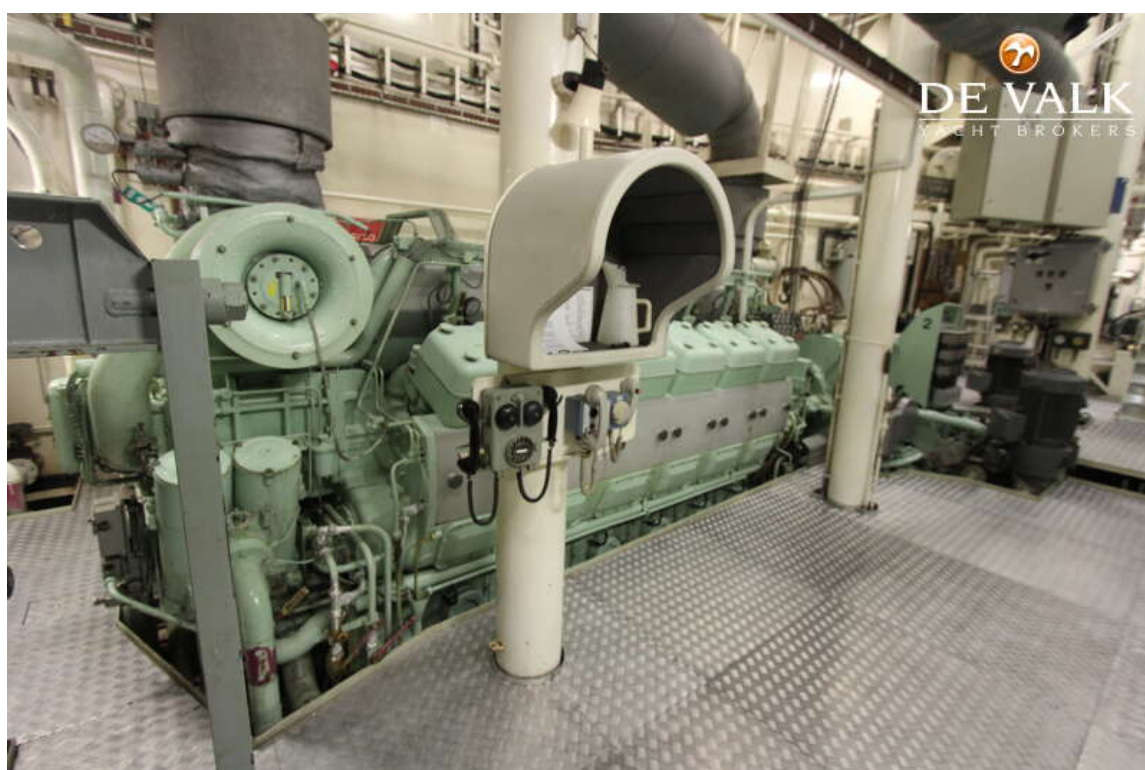


# LONG RANGE EXPEDITION ICEBREAKER





# LONG RANGE EXPEDITION ICEBREAKER



# LONG RANGE EXPEDITION ICEBREAKER

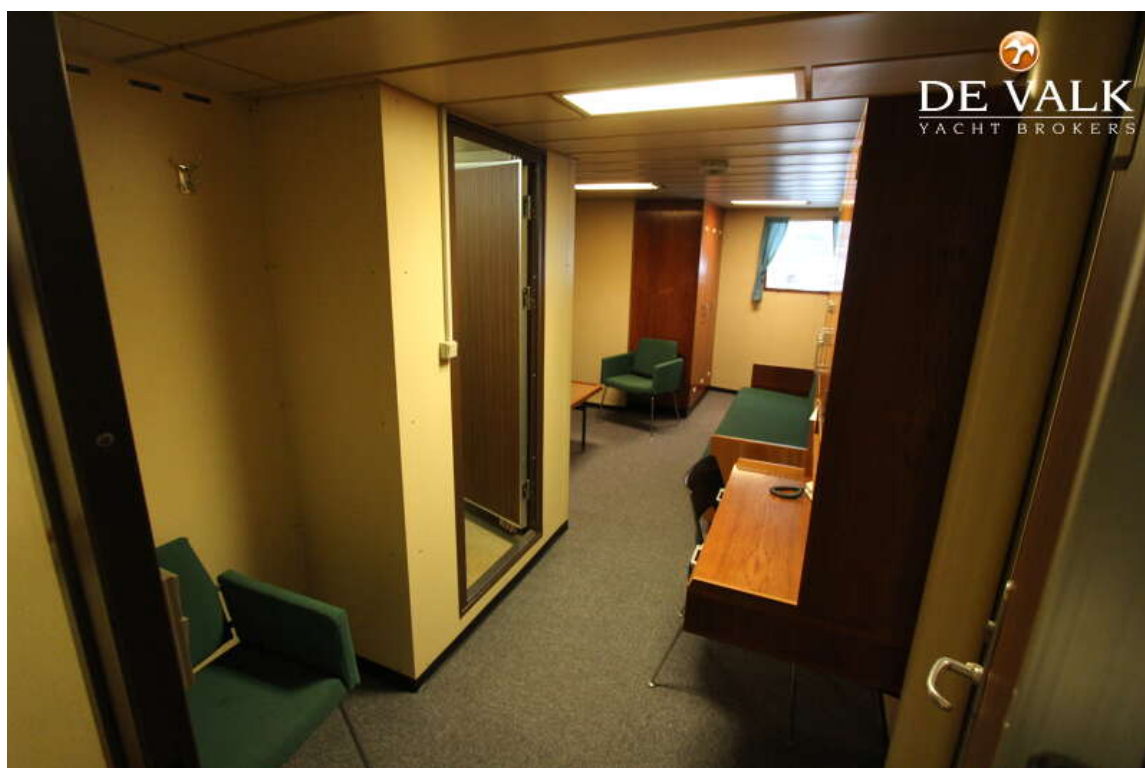




# LONG RANGE EXPEDITION ICEBREAKER

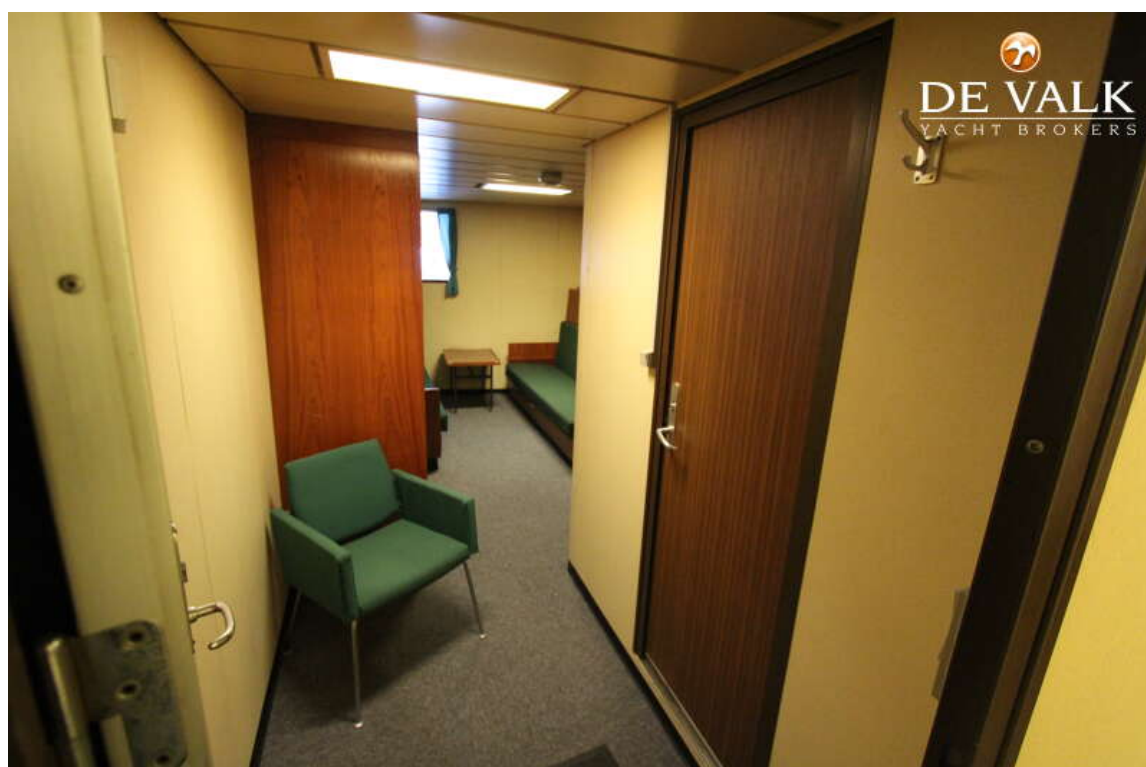


# LONG RANGE EXPEDITION ICEBREAKER





# LONG RANGE EXPEDITION ICEBREAKER

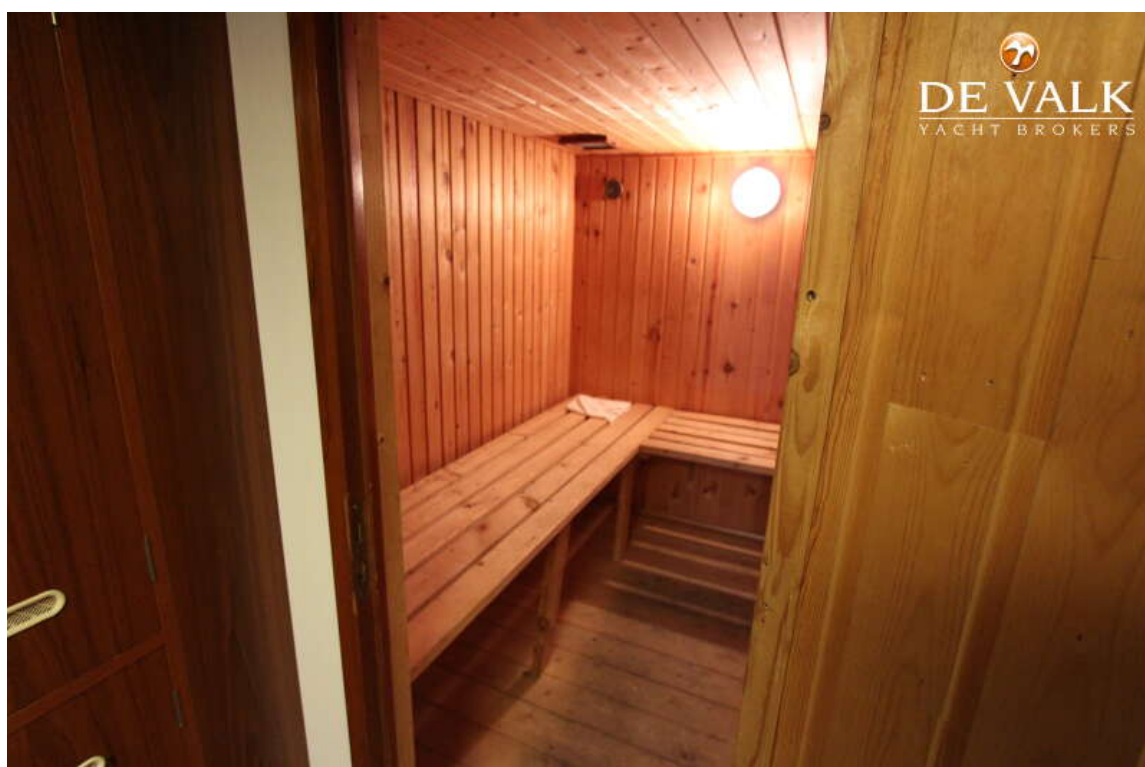


# LONG RANGE EXPEDITION ICEBREAKER

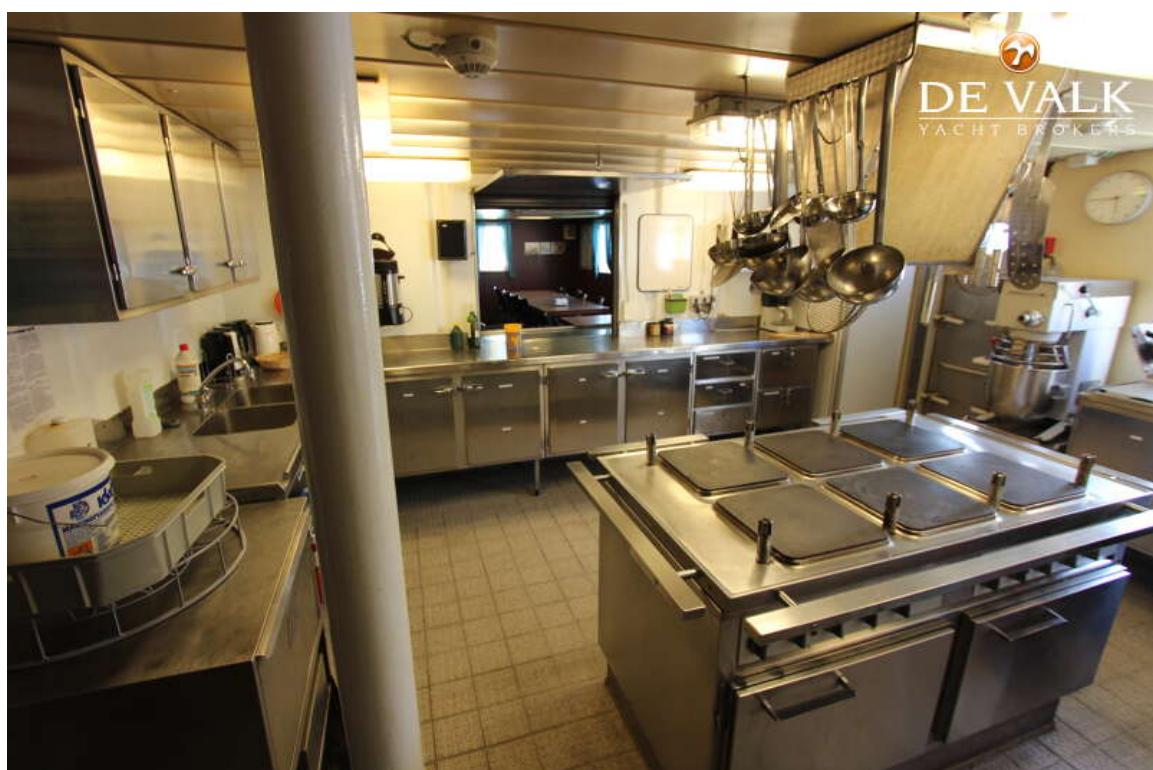




# LONG RANGE EXPEDITION ICEBREAKER

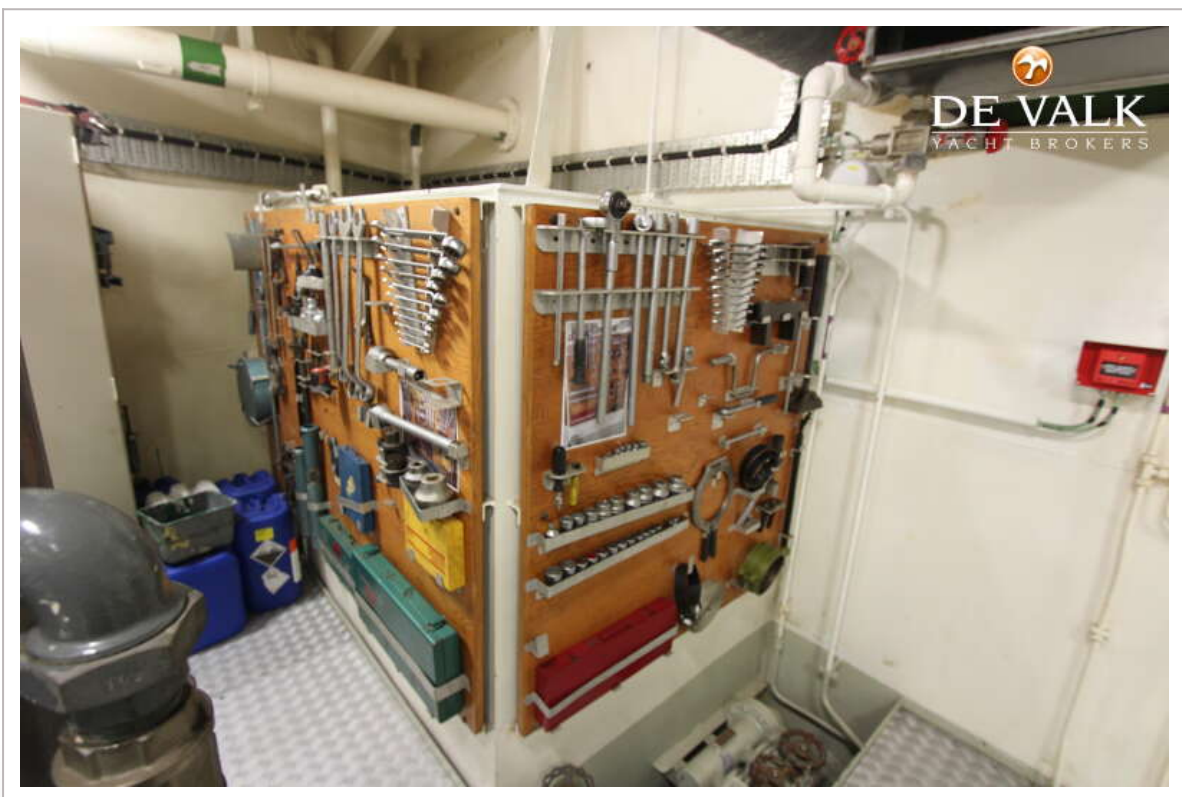
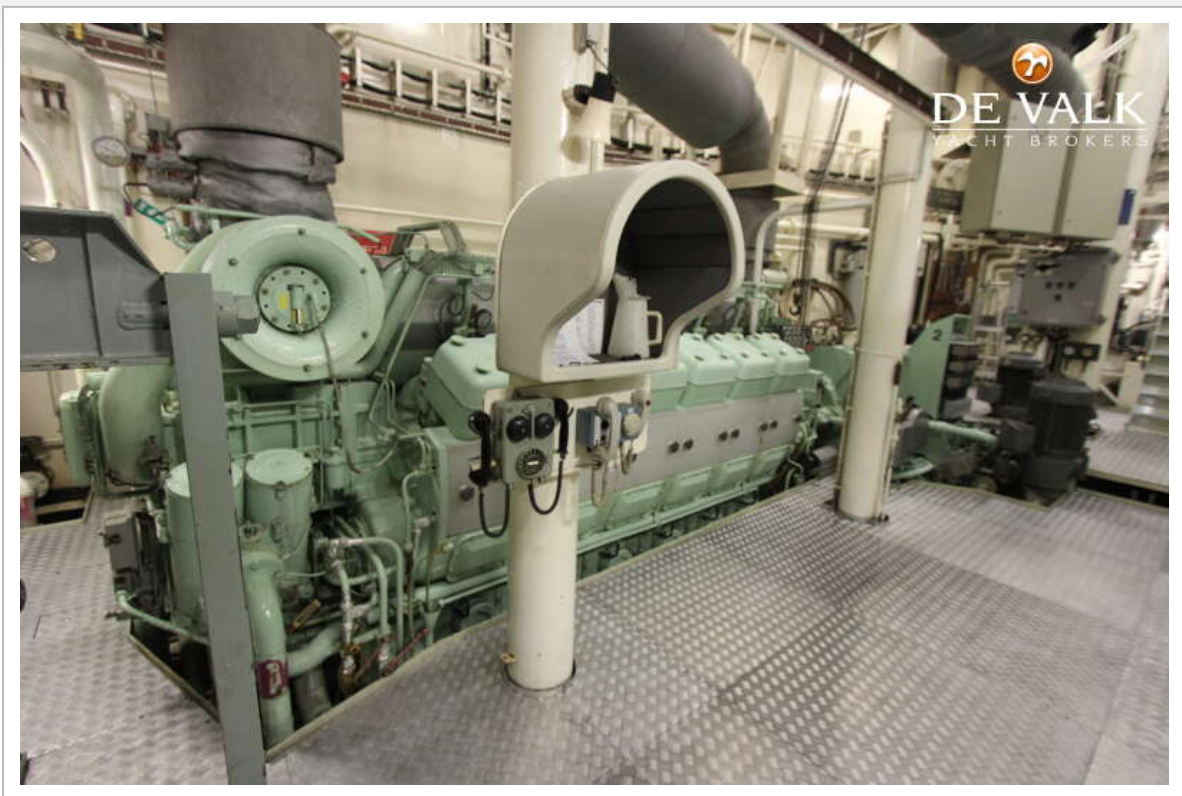


# LONG RANGE EXPEDITION ICEBREAKER





# LONG RANGE EXPEDITION ICEBREAKER



# LONG RANGE EXPEDITION ICEBREAKER

