



DE VALK
YACHT BROKERS



KOOPMANS 40



DE VALK
YACHT BROKERS

BROKER'S COMMENTS

"The Koopmans 40 "Alcyone" is a sturdy classic design by Koopmans Sr, characterized by seaworthiness, comfort, performance & safety. The experienced sailor can sail this boat short-handed quite easily & the cutter rigging makes it easy to reef in steps. A lot has been invested since 2017, including new boom, standing rig, genoa & cutterjib furling systems, equipment, salon upholstery, watermaker & bow thruster. Mast, boom, deck, superstructure & hull sprayed & new anti-slip paint. Due to circumstances now available with a significantly price reduction! Please contact us for more information."

Jan-Ward van Dantzig

SPECIFICATIONS

Dimensions	12,60 x 3,60 x 1,95 (m)	Builder	Wiet Spoor & Heesch Jachtbouw
Built	1998	Cabins	3
Material	GRP	Berths	5
Engine(s)	1 x Perkins Prima M50 diesel	Hp/Kw	50 (hp), 36,75 (kw)
Asking price	EUR 99.000 (vat: paid)	Lying	at sales office

CONTACT

Sales office	De Valk Sint Annaland	Telephone	+31 166 601 000
Address	Koelhuisweg 4 4697 RM Sint Annaland The Netherlands	Fax	+31 (0)166 654 267
		E-mail	sintannaland@devalk.nl

DISCLAIMER

These particulars are given in good faith as supplied but cannot be guaranteed and cannot be used for contracts.



GENERAL

Model	KOOPMANS 40
Type	sailing yacht
LOA (m)	12,60
LWL (m)	11,00
Beam (m)	3,60
Draft (m)	1,95
Air draft (m)	18,50
Headroom (m)	2,00
Year built	1998
Launched	Before June 1998 and therefore not subject to CE standards
Builder	Wiet Spoor & Heesch Jachtbouw
Country	The Netherlands
Designer	Dick Koopmans Sr
Displacement (t)	9,5
Ballast (tonnes)	lead 3,5
CE norm	NA
Hull material	GRP
Hull colour	blue (Spray painted in 2018)
Hull shape	round-bilged Foamcore glass-epoxy
Keel type	fin keel (Lead keel covered with epoxy-glass laminate)
Superstructure material	GRP Foamcore glass-epoxy
Rubbing strake	stainless steel
Deck material	GRP Foamcore glass-epoxy
Deck finish	non-skid paint Grey painted in 2018
Superstructure deck finish	paint White spray painted in 2018
Cockpit deck finish	teak
Antifouling (year)	2025
Dorades	3 x
Window frame	aluminium Nemo
Window material	polycarbonate



Deckhatch	Gebo
Portholes	aluminium Nemo & 2 x round (with stainless steel frame)
Insulation	foam (foam core sandwich hull)
Fuel tank (litre)	stainless steel 200
Freshwater tank (litre)	stainless steel 300
Blackwater tank (litre)	stainless steel Approx. 60 (in boat, but not connected)
Wheel steering	Leather covered stainless steel steering wheel
Outside helm position	rack & pinion Solimar pedestal (stainless steel bearings renewed in 2023)
Emergency tiller	(Stainless steel)
More info on hull	Osmosis prevention treatment applied in 2002
Extra info	Design drawings are present
Extra info	Extra spare set of stainless steel bearings for pedestal (2023)
Extra info	Extra spare set of drive shaft bearings (2021)

ACCOMMODATION

Cabins	3
Berths	5
Interior	teak & mahogany
Floor	wood
Saloon	With blue "Alcantara" upholstery covers (new in 2021)
Headroom saloon (m)	1,90 - 2,10
Heating	central heating Eberspacher Hydronic D5 W S (new in 2003)
Heating 2	electric 220V Eurom (2021) in the saloon
Chart table	On starboard side. USB-socket at chart table (2021)
Aft Cabin	2 x
Dinette	1 x Small & 1 x Large saloon table
Galley	On port side - Headroom : 2,10 m
Countertop	Duropol (white)
Sink	stainless steel 1 x
Cooker	calor gas 3 x Burner (with electric gas-valve)



Oven	yes
Fridge	Front loader CRX 65 Dometic with compressor (new in 2020)
Hot water system	220V or central heating 30 liter boiler (heating element 2.000w - configured to 700watt)
Water pressure system	electrical
Crockery	yes
Owners cabin	v-bed In front cabin - Headroom : 1,80 m
Bed length (m)	2,00 x 1,50
Wardrobe	hanging and shelves
Bathroom	shared Headroom : 2,00 m
Toilet	shared
Toilet system	electric Sea Flow (new in 2021)
Wash basin	in the bathroom Stainless steel
Shower	en suite (With an electric Gulper drain water pump)
Extra info	Seminautic Excellent Pantera 2130 mattresses (new in 2018)
Guest cabin 1	double bed Port side aft cabin - Headroom 1,80 m
Bed length (m)	2,15 x 1,00
Wardrobe	hanging and shelves
Guest cabin 2	single bed Starboard side aft cabin - Headroom in front of cabin : 2,00 m
Bed length (m)	2,10 x 0,80
Wardrobe	shelves
Extra info	Dimmable saloon LED lights and 1x extra dimmer
Extra info	Philippi STV200 Power Distribution Panel-chart table (new 2020)

MACHINERY

No of engines	1
Make	Perkins
Type	Prima M50
HP	50
kW	36.75
Fuel	diesel



Year installed	1998
Maximum speed (kn)	6,8
Cruising speed (kn)	6
Consumption (l/hr)	3
Engine hours	2560
Engine cooling system	freshwater heat exchanger
Drive	shaft
Shaft seal	yes
Engine controls	bowden cable The control lever - Morse control - is new in 2020
Gearbox	mechanical
Engine controls	Mebay engine panel (new in 2021)
Bowthruster	electric Vetus 4,4 kW (new in 2017 - installed in 2018)
Exhaust	watercooled
Thrust bearing	(new in 2021 + spare bearing) & CV joint (new in 2023)
Propeller type	feathering Maxprop (new in 2006 - overhauled in 2014)
Propeller blades	3
Propeller shaft material	stainless steel & new outer shaft bearing (new in 2021)
Shaft lubrication	grease
Manual bilge pump	1 x (new in 2023, but not connected yet)
Electric bilge pump	2 x (automatic)
Electrical installation	12 & 220 Volt (with a Masterbus Network)
Start battery	1 x 74 AH Exide (new in 2018)
Service battery	2 x 120 AH Exide Gel (new in 2018)
Battery monitor	Mastervolt EasyView 5 Touchscreen (new in 2023)
Battery charger	Mastervolt Chargemaster 12/50-3 (new in 2020)
Inverter	Mastervolt IVO Sine 12V/500 Watt
Diode battery combiners	Mastervolt (new in 2020)
Shorepower	with cable & Intelligent shorepower security & extra circuit breaker (2020)
Watermaker	ENWA 30 L/H with automatic water quality sensor
Extra info	Info watermaker: ROS-2210 controller (2021) & 2x 12V pump (2021)
Extra info	Mastervolt MasterShunt 500 (new in 2020)



Extra info

HTRONIC MPC1000 Main/Inverter Priority Circuit Switch (new 2020)

NAVIGATION

Compass

Plastimo Olympic 135 on pedestal (new in 2012)

Multi control display

2 x Raymarine i70s (new in 2018)

Depth sounder/log

Raymarine (new in 2018)

Windset

Raymarine (new in 2018)

VHF

Sailor 6222 DSC (new in 2021)

Autopilot

Raymarine P70s & S100 wireless remote & ACU200 (all new in 2021), only original Simrad driver

Rudder angle indicator

via autopilot display (new in 2021)

Plotter/GPS

Raymarine Hybrid Touch 7' (new in 2023)

PC connection

yes

Wifi antenna

Sani Wallheat 2000 Wifi with a 4G TP-Link MR600 Wifi router

Electronic chart(s)

yes

AIS transceiver

em-trak B350 Class B AIS (new in 2021)

EPIRB

ACR 6 Pro Fix (battery needs to be replaced in 2025)

Navigation lights

yes

Extra info

Sailor Inmarsat phone (new antenna in box - to be installed)

Extra info

Sailor Iridium Thrane&Thrane (antenna installed, no cables yet)

EQUIPMENT

Sprayhood with grab rail

blue

Cockpit cushions

2 x

Cockpit table

folding varnished teak table (hanging on front side of pedestal)

Bathing platform

covered with teak

Boarding ladder

stainless steel

Deck shower

yes

Anchor

Delta (stainless steel) with a lead weighted rope

Other ground tackle

New stainless steel anchor plate mounted on the bow (2020)



Windlass	electrical Quick Aries (vertical) 1.000W (new in box, not installed yet)
Sea railing	wire double stainless steel wires
Grab rail (superstructure)	stainless steel
Pushpit	stainless steel
Pulpit	stainless steel
Life raft	container RDF SeaSava 6+X (new in 2018)
Life raft (pers)	6
Last life raft survey	needs to be surveyed
Lifebuoy	yes
Danbuoy	yes
Safety lines on deck	yes
Fenders	yes
Mooring lines	yes
Spare parts	yes
Alarm system	with camera in interior
TV	Salora 24"HD LED TV (new in 2021)
TV receiver	Google TV (new in 2021)
Fire extinguisher	3 x & 3 x smoke detector (new in 2020)
Latest extinguisher survey	need to be checked/renewed
Extra info	New (laminated) anchor chain box & drain above waterline (2022)
Extra info	The cables for the electric windlass are present
Extra info	The deck needs to be reinforced before windlass can be installed

RIGGING

Rigging	cutter With removable backstays
Standing rigging	wire (new in 2021)
Material mast	aluminium coated (White spray painted in 2018)
Spreaders	2 x Set of custom made open stainless steel spreaders
Mainsail	(new in 2017)
Mainsail cover	Dark blue with Lazy-Jacks
Jib	Furling Cutter Jib (new in 2017)



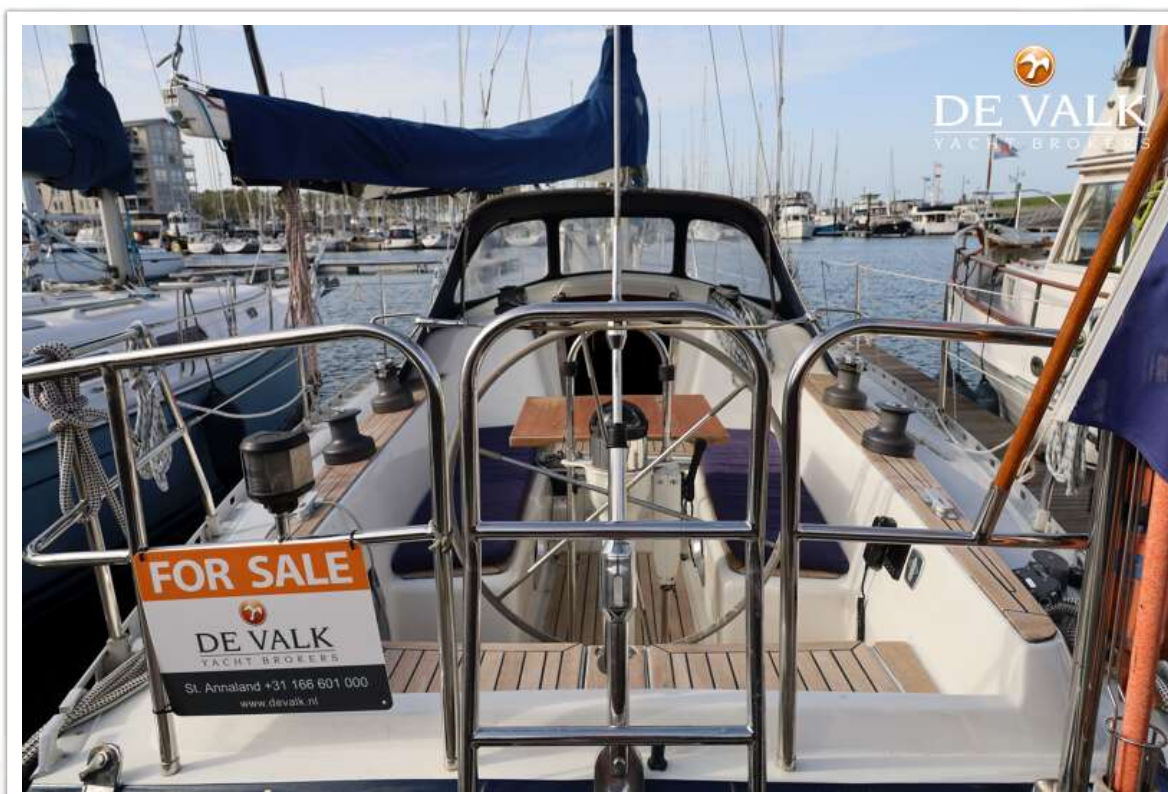
Genoa	Furling Genoa (new in 2017)
Genoa furler	Nemo (new in 2018)
Genoa cover	1 x Blue genoa & 1 x Blue cutter jib cover
Cutter furler	Nemo (new in 2018)
Spinnaker	Momentum Sails 140m2 (new in 2007)
Reefing System	quick-one-line-reefing & hook on the front of the boom
Backstay adjuster	mechanical Nemo
Boomvang	tackle
Secondary sheet winch	2 x Meissner 27
Genoa sheetwinches	2 x Meissner 28 STA
Halyard winches	2 x Meissner 21
Spi-pole	aluminium White spray painted (in 2018) - hanging on front side of mast
Isolated backstay	(new in 2021)
Extra info	Stainless steel Granny Bars around the mast
Extra info	White spray painted Selden boom (new in 2021)



KOOPMANS 40



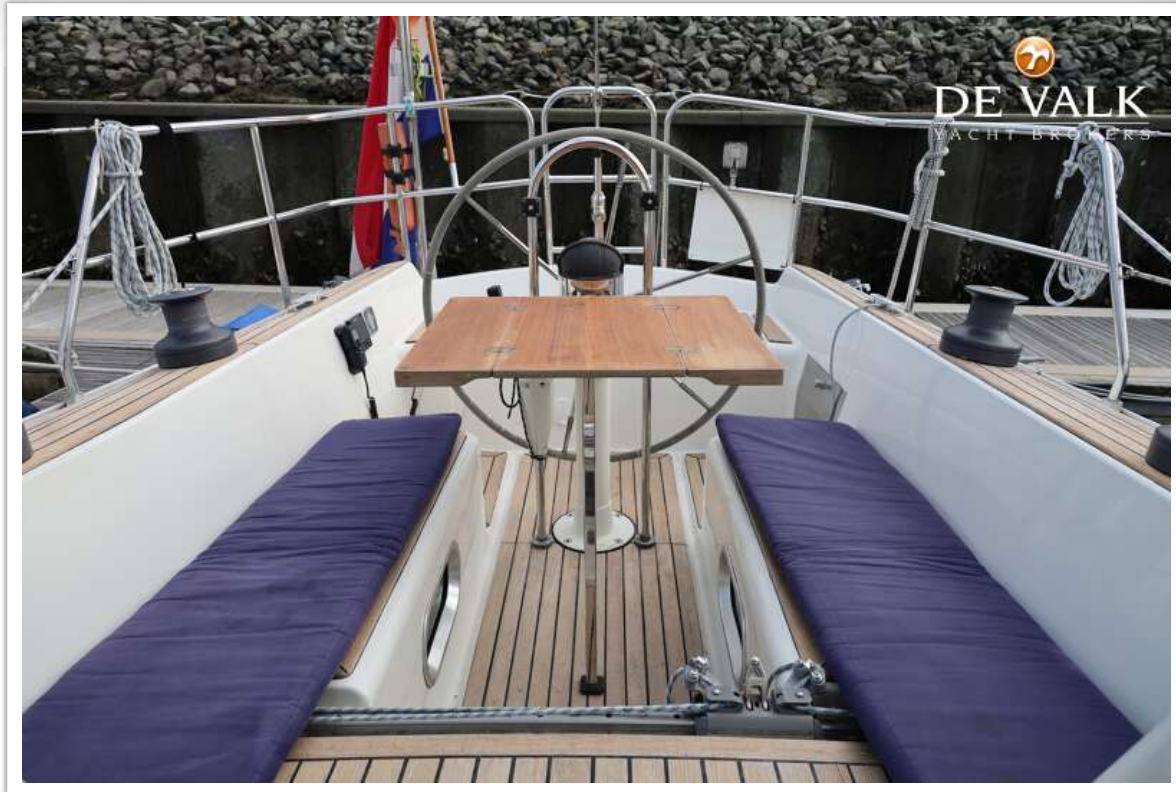
KOOPMANS 40



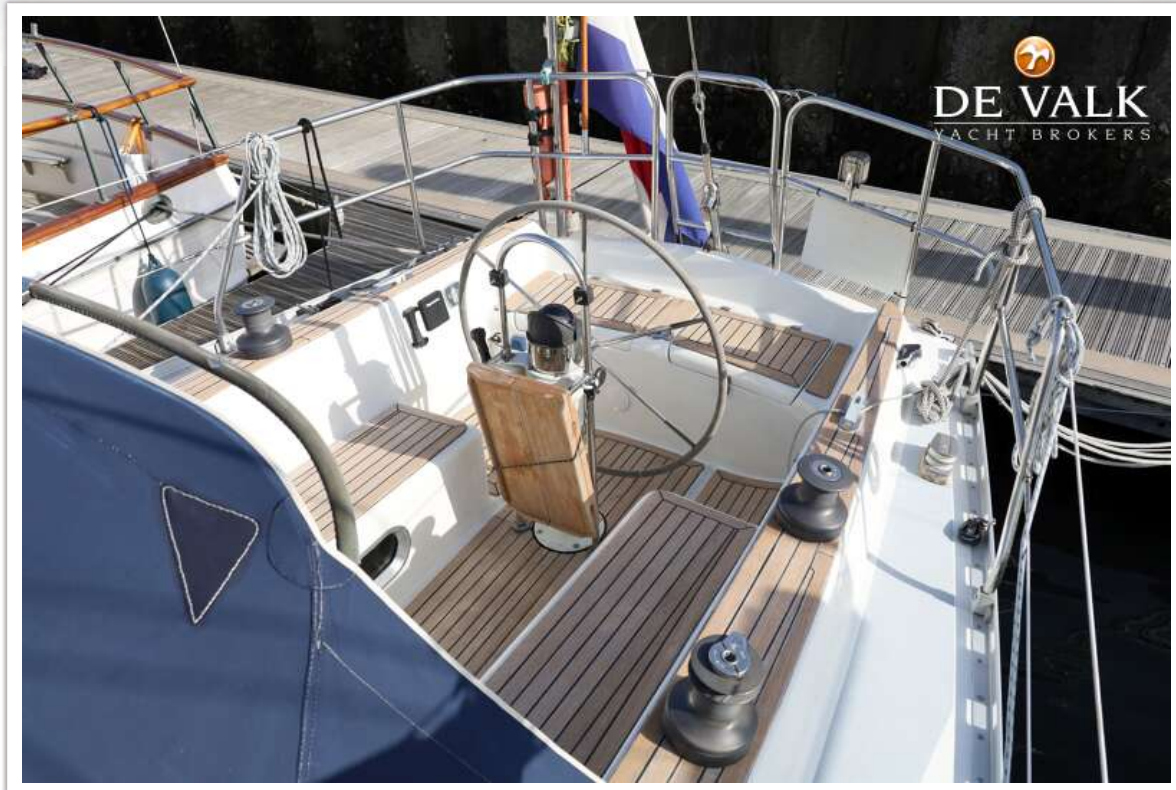
KOOPMANS 40



KOOPMANS 40



KOOPMANS 40



KOOPMANS 40



KOOPMANS 40



KOOPMANS 40



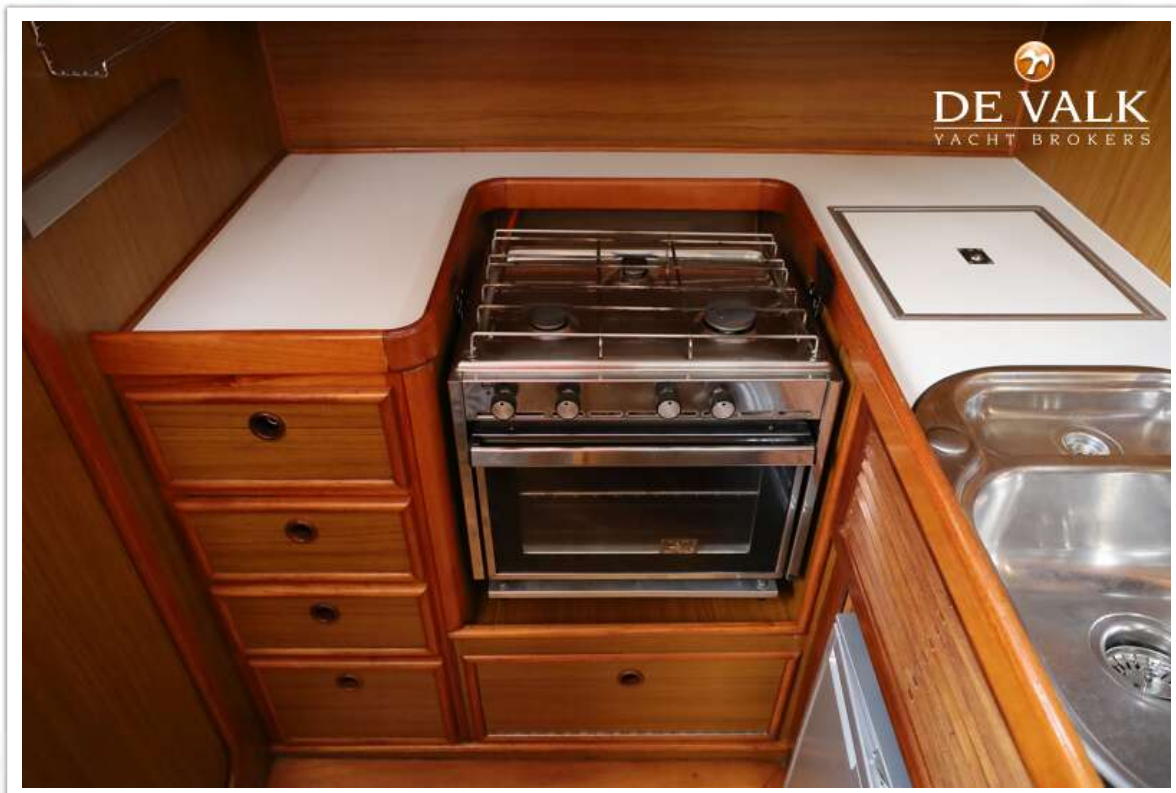
KOOPMANS 40



KOOPMANS 40



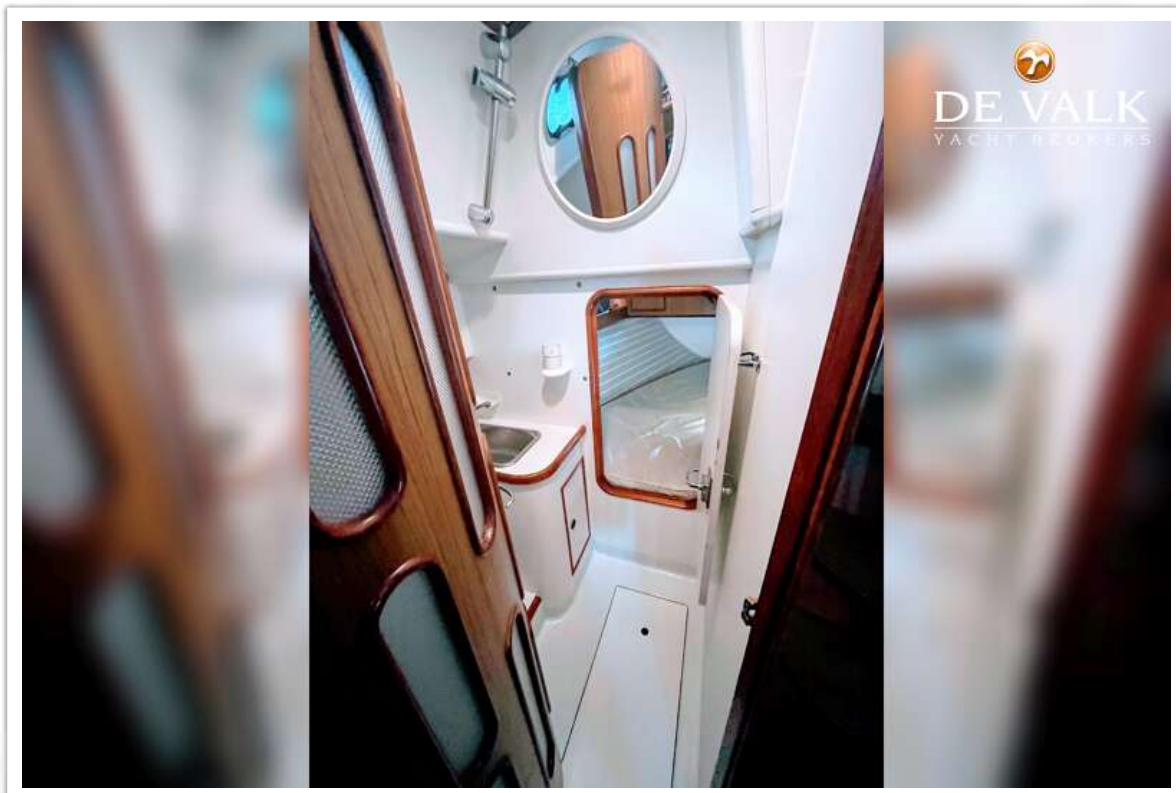
KOOPMANS 40

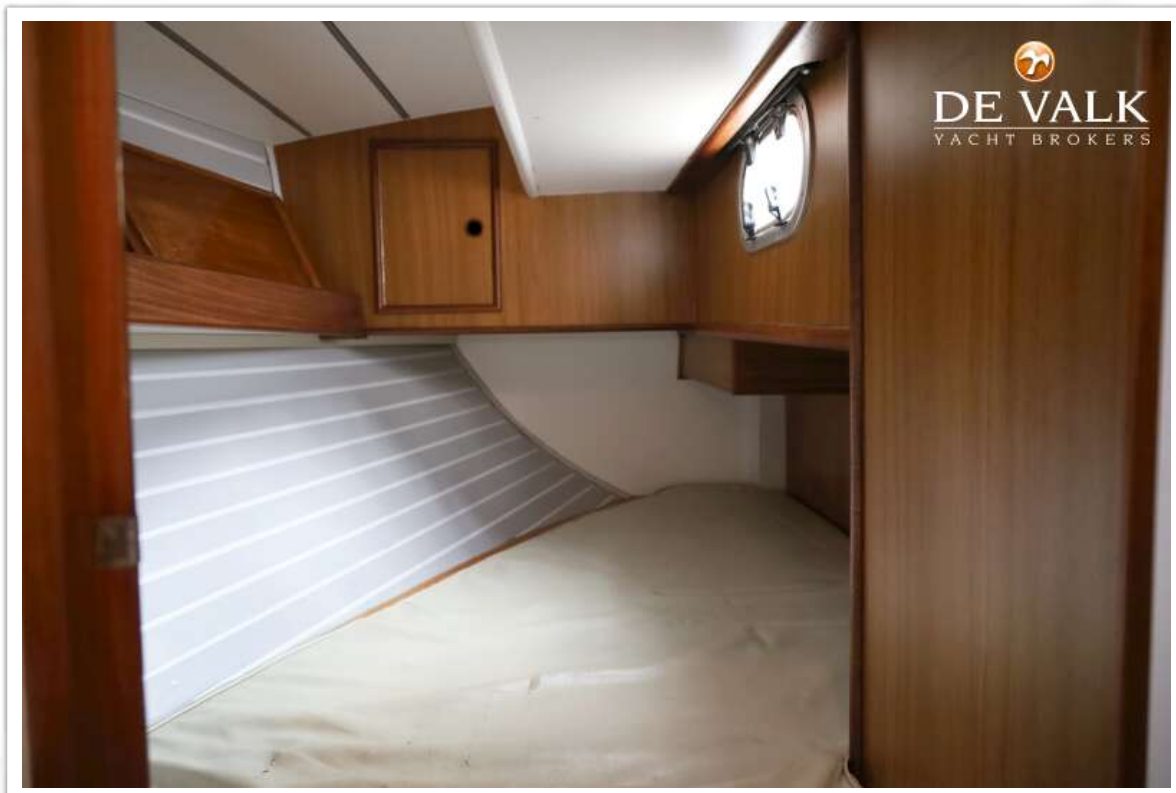
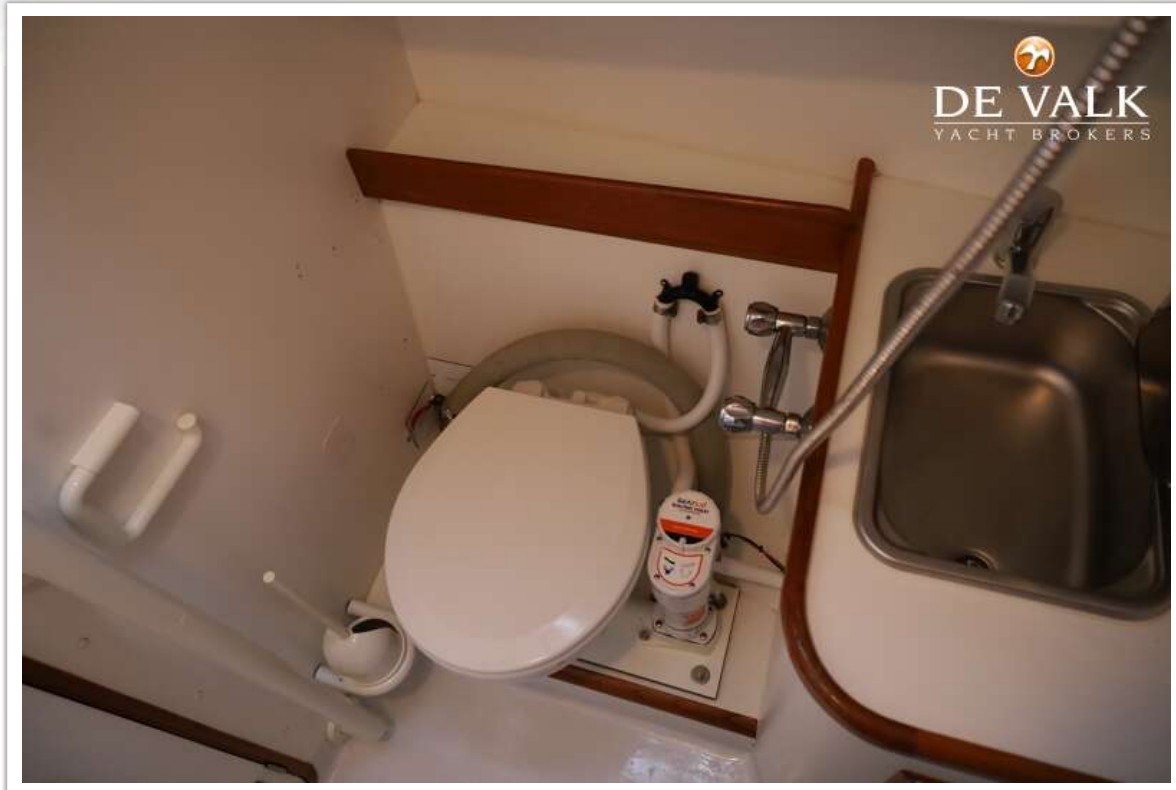


KOOPMANS 40

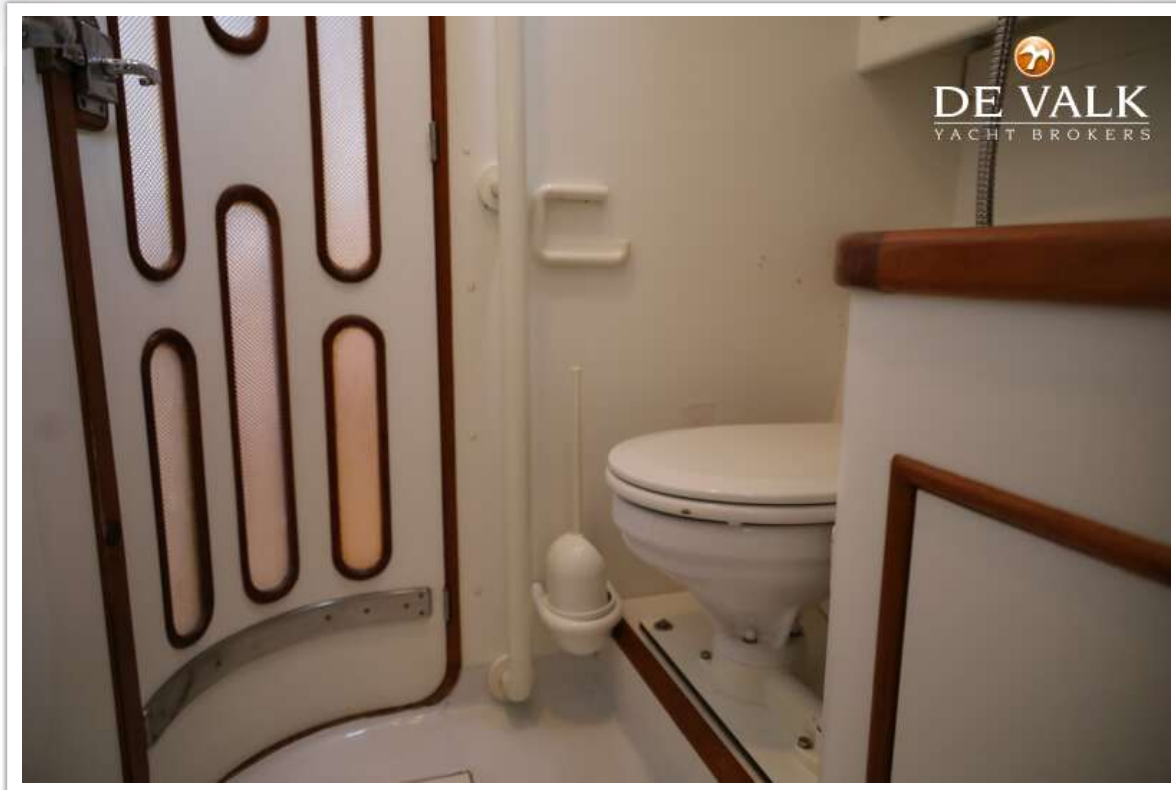


KOOPMANS 40

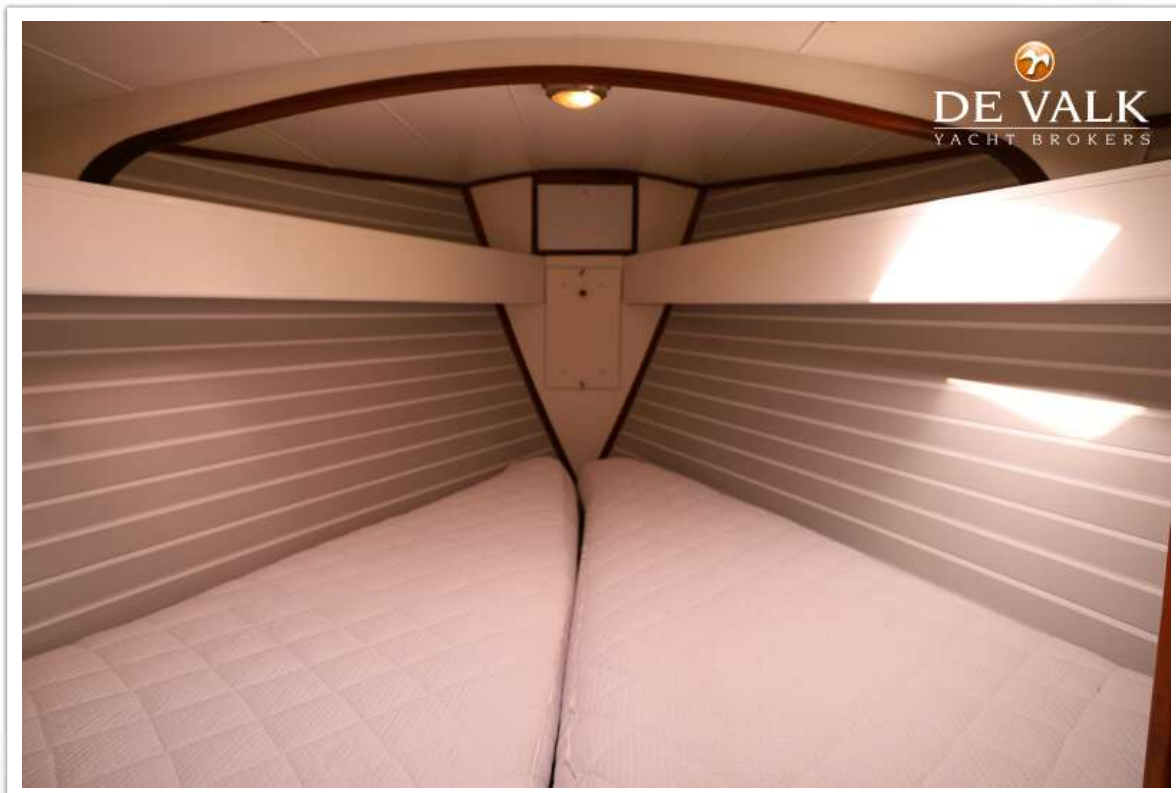




KOOPMANS 40



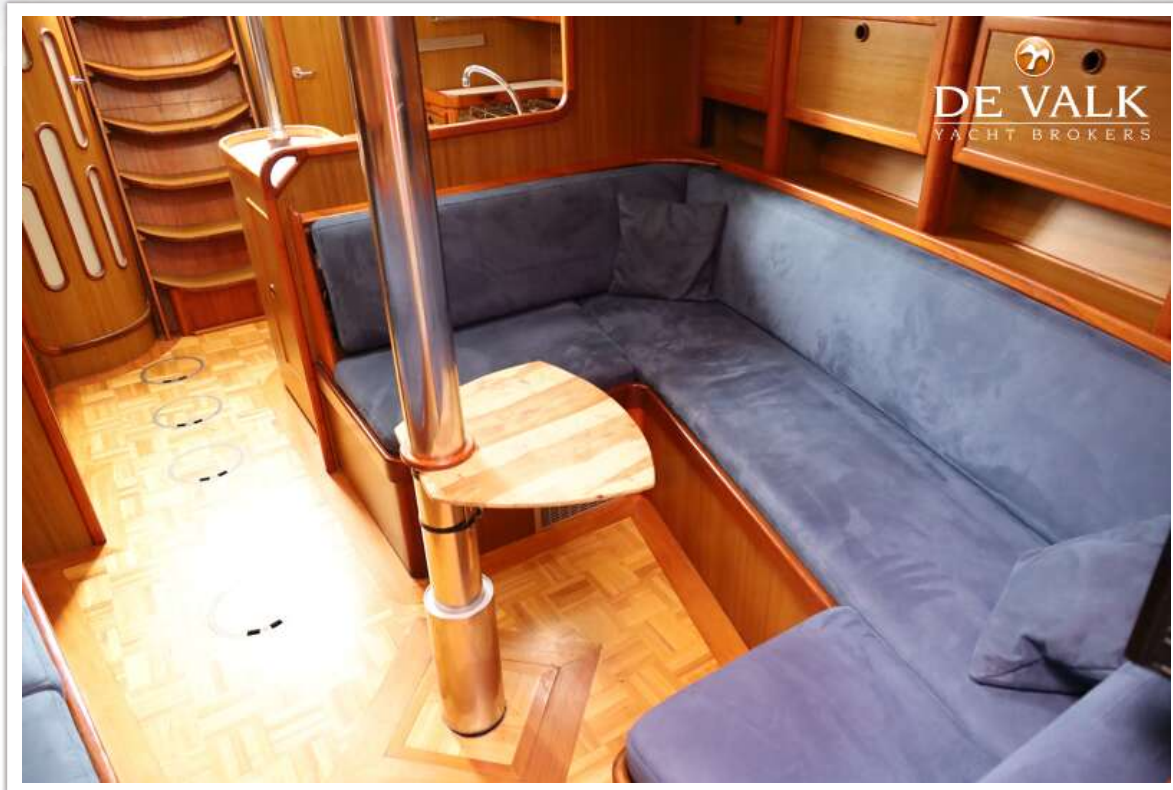
KOOPMANS 40



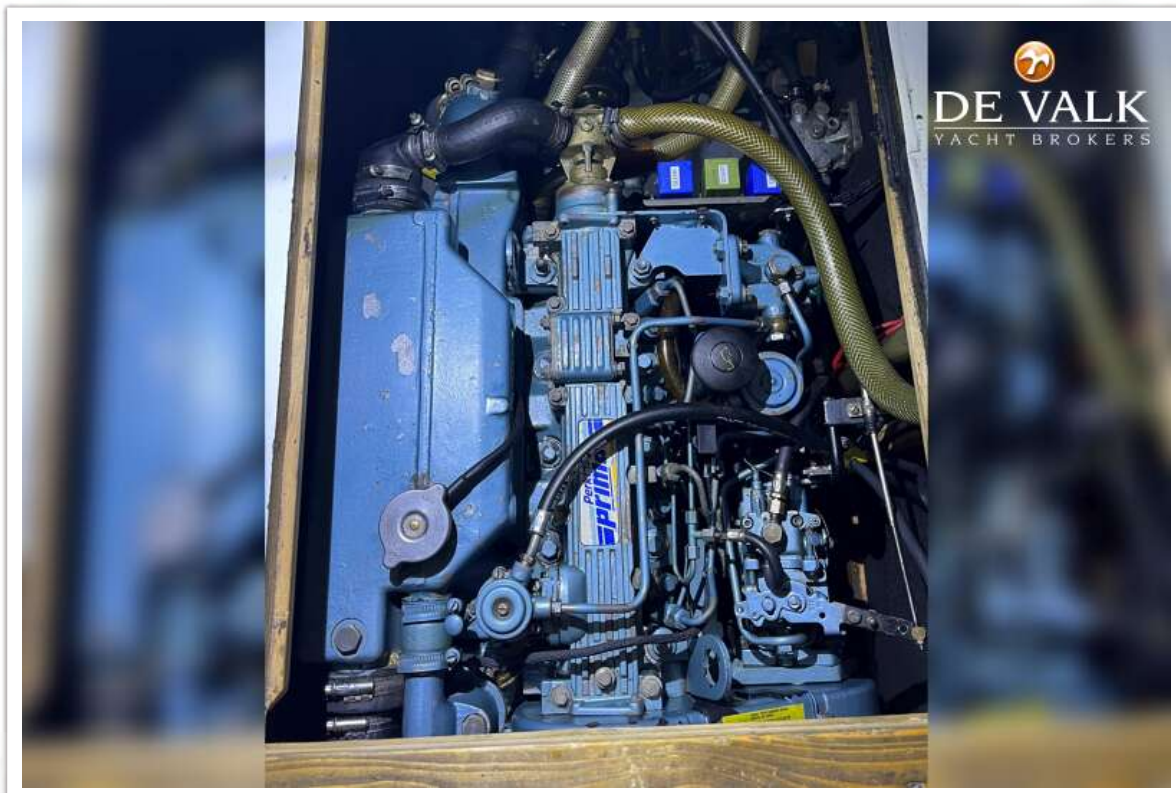
KOOPMANS 40



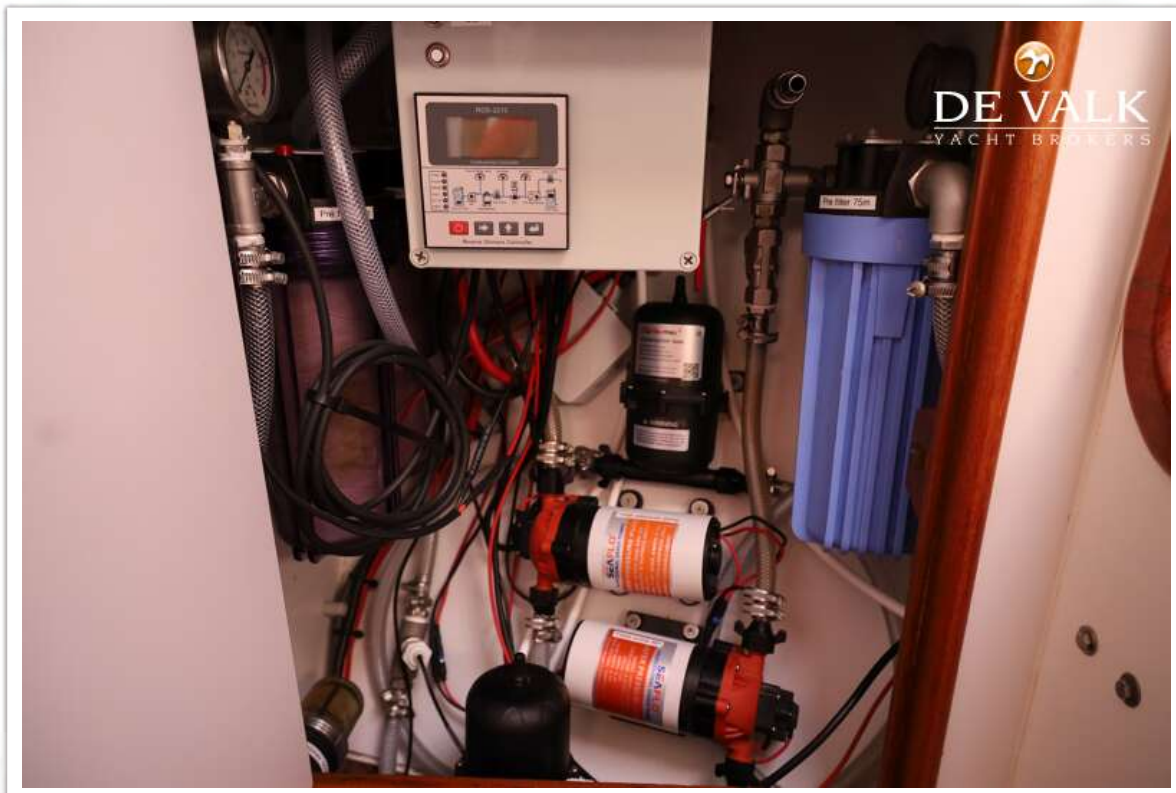
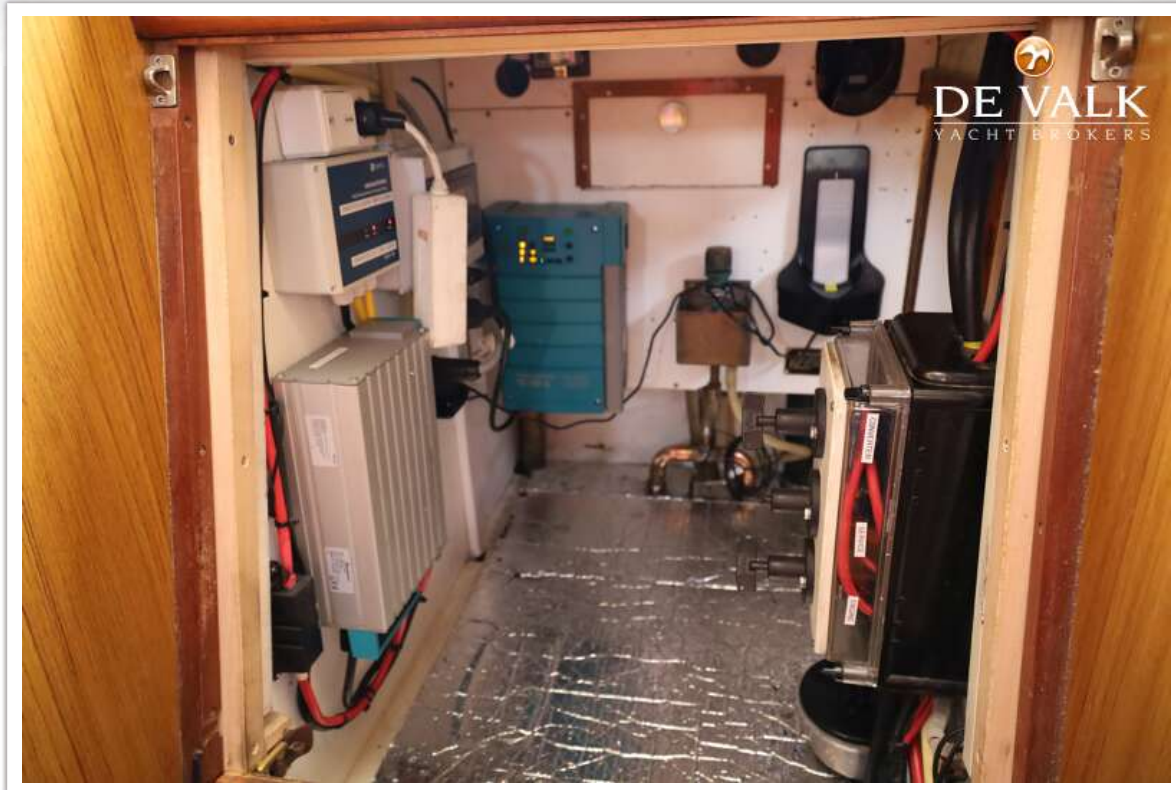
KOOPMANS 40



KOOPMANS 40



KOOPMANS 40



KOOPMANS 40

