



DE VALK
YACHT BROKERS



BAVARIA 42 CRUISER



DE VALK
YACHT BROKERS

BAVARIA 42 CRUISER

BROKER'S COMMENTS

Want to sail tomorrow with your family, carefree in all the comfort ? This perfectly maintained (new sails) and fully equipped (elec. winches) Bavaria 42 cruiser "Fayerie" has it all. The owner is well known for having spared no expense to transfer this boat to her current immaculate condition. Ready for a new enthusiast sailor to sail the seven seas. Now available to view and admire in our sales marina in Hindeloopen.

Johan Nooitgedagt

SPECIFICATIONS

Dimensions	12.99 x 3.99 x 1.80 (m)	Builder	Bavaria Giebelstadt
Built	2005	Cabins	3
Material	GRP	Berths	7
Engine(s)	1 x Volvo Penta D2-55-C diesel	Hp/Kw	55.00 (hp), 40.42 (kw)
Asking price	sold (VAT)	Lying	contact Hindeloopen

CONTACT

Sales office	De Valk Hindeloopen B.V.	Telephone	+31 514 52 40 00
Address	Oosterstrand 1 8713 JS Hindeloopen NL	E-mail	hindeloopen@devalk.nl

DISCLAIMER

These particulars are given in good faith as supplied but cannot be guaranteed.



BAVARIA 42 CRUISER

GENERAL

Model	BAVARIA 42 CRUISER
Type	sailing yacht
LOA (m)	12,99
LWL (m)	11,40
Beam (m)	3,99
Draft (m)	1,80
Air draft (m)	18,50
Headroom (m)	2,00
Year built	2005
Launched	2006
Builder	Bavaria Giebelstadt
Country	Germany
Designer	J & J Design
Displacement (t)	9,2
Ballast (tonnes)	cast iron 3
CE norm	A
Hull material	GRP
Hull colour	blue
Hull shape	round-bilged
Keel type	fin keel
Superstructure material	GRP
Rubbing strake	stainless steel
Deck material	GRP
Deck finish	teak
Superstructure deck finish	non-skid moulded in
Cockpit deck finish	teak
Antifouling (year)	2021 5 layer Hempel
Dorades	yes
Window frame	aluminium
Window material	perspex



BAVARIA 42 CRUISER

Deckhatch	6x
Fuel tank (litre)	polyethylene 200 cleaned 2021
Level indicator (fuel tank)	yes
Freshwater tank (litre)	polyethylene 360
Blackwater tank (litre)	30
Blackwater tank extraction	deck extraction + uw line
Wheel steering	cable steering Wheel cover 2x
Emergency tiller	yes

ACCOMMODATION

Cabins	3
Berths	7
Interior	mahogany
Floor	teak and holly
Open cockpit	yes
Saloon	2021 new upholstrey
Headroom saloon (m)	2,04
Heating	diesel ducted hot air Webasto
Chart table	yes
Aft Cabin	yes
Galley	yes
Countertop	corian
Sink	stainless steel
Cooker	calor gas 2 Burner
Oven	In cooker
Microwave	Daewoo
Fridge	2x one with freezing compartment
Hot water system	220V + engine Boiler 25l
Water pressure system	electrical
Owners cabin	v-bed Front
Bed length (m)	2,10



BAVARIA 42 CRUISER

Wardrobe	hanging and shelves
Bathroom	en suite
Toilet	en suite 2021
Toilet system	manual Jabsco
Wash basin	at the toilet
Shower	en suite
Guest cabin 1	double bed Rear
Bed length (m)	2,00 Matrass 2021
Wardrobe	hanging and shelves
Bathroom	shared
Toilet	shared
Toilet system	manual
Wash basin	at the toilet
Shower	shared
Guest cabin 2	double bed
Bed length (m)	2,0
Wardrobe	hanging and shelves
Extra info	Gas insp until 2023

MACHINERY

No of engines	1
Make	Volvo Penta
Type	D2-55-C
HP	55
kW	40,42
Fuel	diesel
Year installed	2005
Maximum speed (kn)	7
Cruising speed (kn)	6
Consumption (l/hr)	3
Engine cooling system	freshwater heat exchanger



BAVARIA 42 CRUISER

Drive	sail-drive
Saildrive seal	2021
Engine controls	bowden cable
Gearbox	mechanical
Bowthruster	electric Side power
Exhaust	watercooled
Propeller type	folding
Propeller blades	3
Manual bilge pump	yes
Electric bilge pump	yes
Electrical installation	12/220 V
Start battery	1x Exide 50 Ah
Service battery	3x Victron AGM 165 Ah
Bowthruster battery	2x Exide 50 Ah
Battery charger	2019 Victron 50 Amp
Shorepower	with cable

NAVIGATION

Compass	2x Plastimo Olympic 135
Depth sounder	Raymarine ST60 Depth
Log	Raymarine ST60 Speed
Windset	Raymarine ST60 Wind
Repeater	Raymarine ST 60
VHF	2x Raymarine inside & outside
Autopilot	Raymarine ST6001
Rudder angle indicator	Raymarine ST6001
Radar	Raymarine
Plotter/GPS	Raymarine E80 inside
Radar/GPS/plotter	2021 Raymarine Axiom pro 9 Out side
AIS transceiver	2021 AIS 700
Navigation lights	yes



BAVARIA 42 CRUISER

EQUIPMENT

Sprayhood	yes
Cockpit cover	yes
Winter cover	2017 Skips maritiem Hindeloopen
Cockpit table	yes
Bathing platform	yes
Boarding ladder	stainless steel
Deck shower	yes
Anchor	CQR Plough Stainless steel
Anchor chain	yes
Windlass	electrical Quick
Dinghy	inflatable
Outboard	Yamaha
Sea railing	stainless steel 2021 wire
Grab rail (superstructure)	stainless steel
Pushpit	yes
Pulpit	yes
Life raft	yes
Fenders	yes
Mooring lines	yes
TV	Solarna
TV receiver	DVB - Clark
Radio-cd player	Blaupunkt
DVD player	Skytronic
Speakers in salon	yes
Fire extinguisher	3x 2021

RIGGING

Rigging	sloop
Standing rigging	wire
Brand mast	Seldén



BAVARIA 42 CRUISER

Material mast	aluminium
Spreaders	2 Pair
Mainsail	2016 De Vries Makkum
Stoway mast	yes
Genoa	2016 De Vries Makkum
Genoa furler	yes
Reefing System	main in-mast furling
Backstay adjuster	mechanical
Boomvang	gasspring
Secondary sheet winch	2x Lewmar St40
Genoa sheetwinches	2x Lewmar St48 electric
Multifunctional winches	2x Lewmar St 40
Spi-pole	aluminium



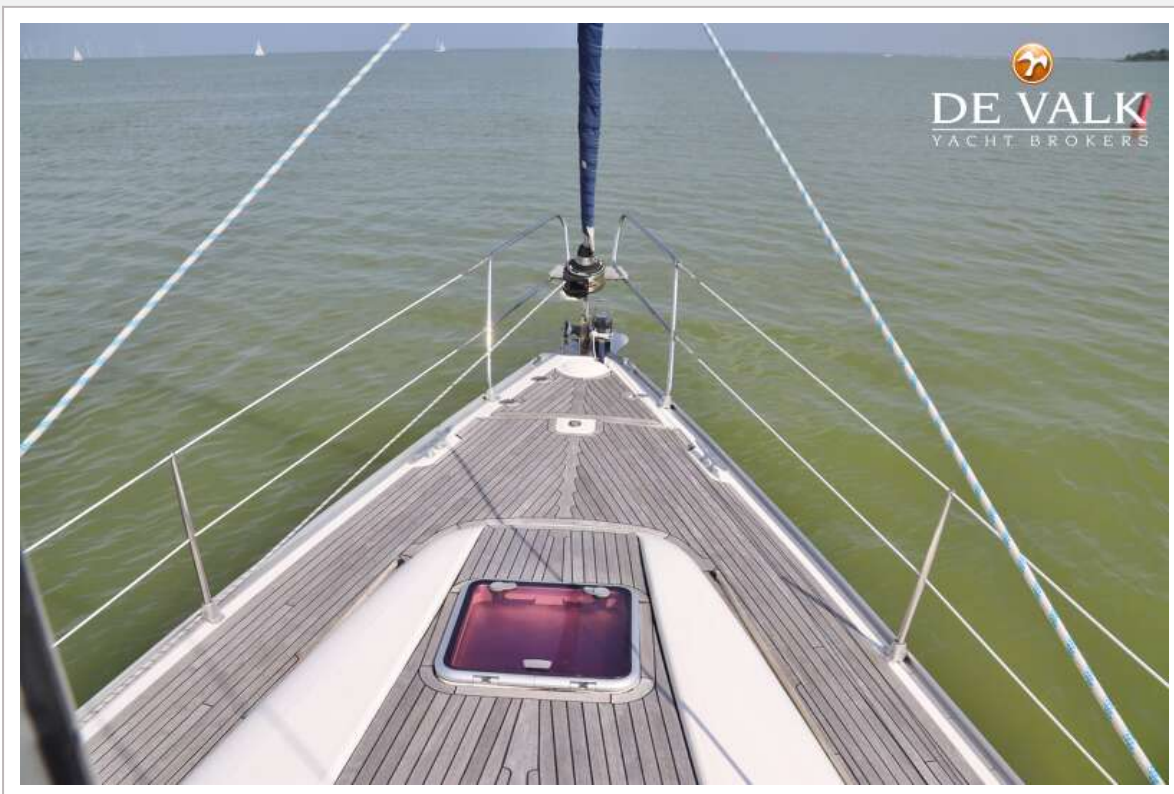
BAVARIA 42 CRUISER



BAVARIA 42 CRUISER



BAVARIA 42 CRUISER



BAVARIA 42 CRUISER



BAVARIA 42 CRUISER



BAVARIA 42 CRUISER



BAVARIA 42 CRUISER



BAVARIA 42 CRUISER



BAVARIA 42 CRUISER



BAVARIA 42 CRUISER



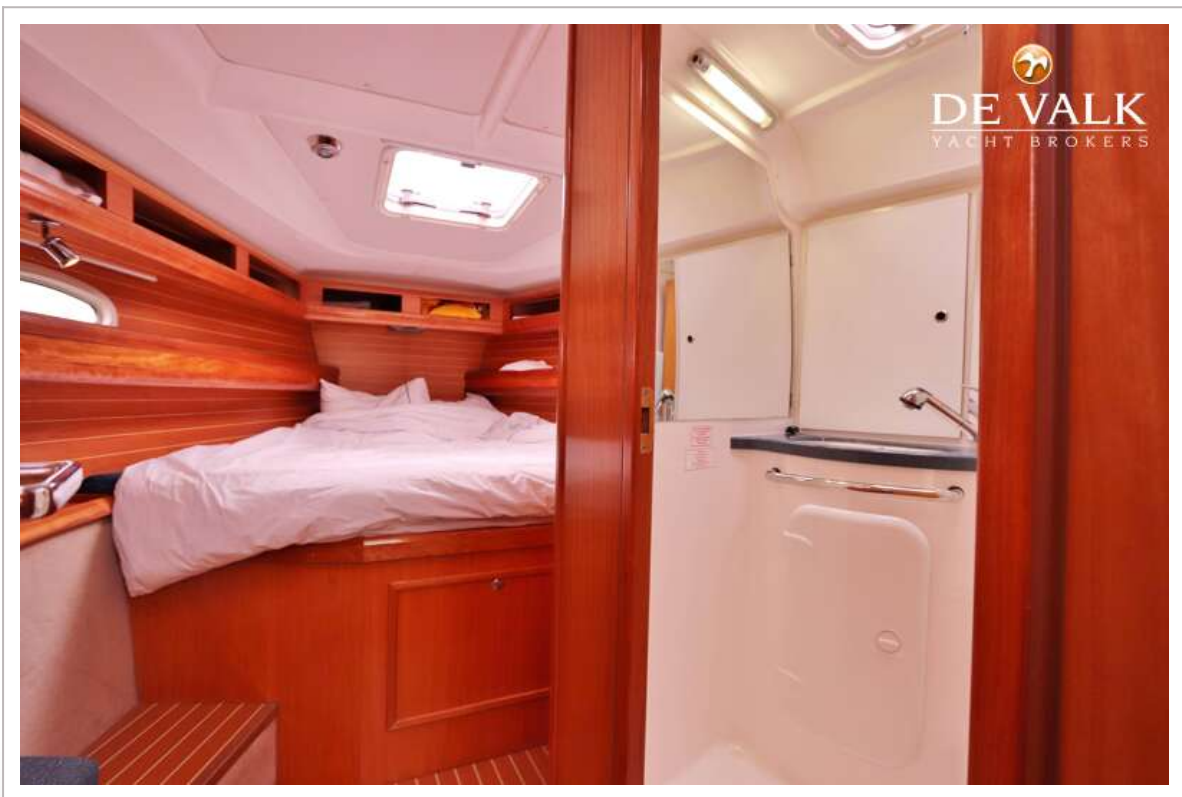
BAVARIA 42 CRUISER



BAVARIA 42 CRUISER



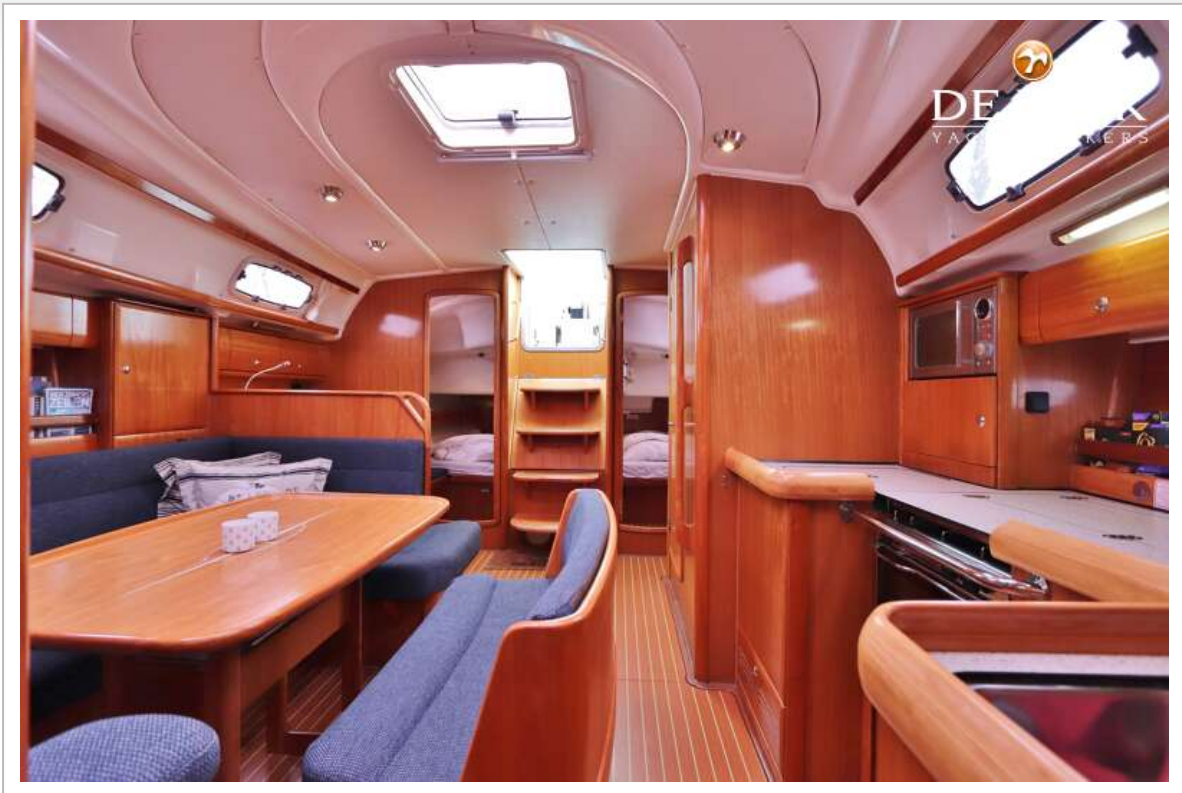
BAVARIA 42 CRUISER



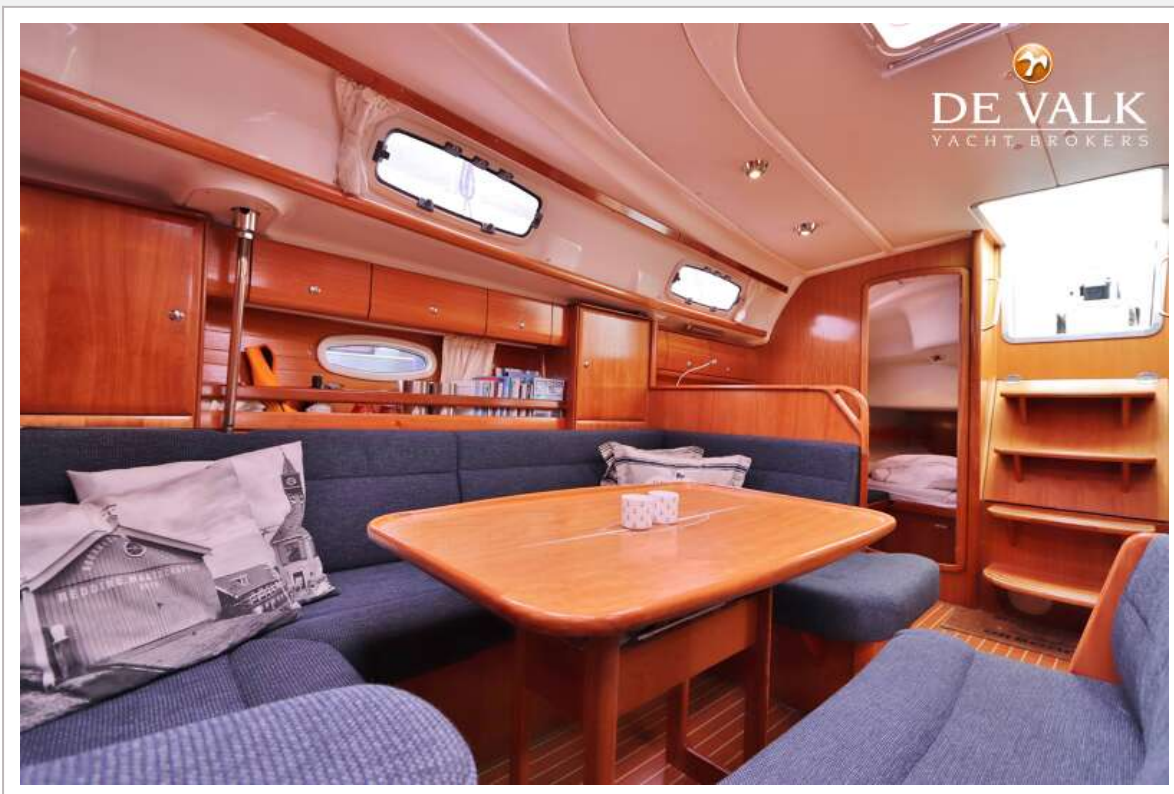
BAVARIA 42 CRUISER



BAVARIA 42 CRUISER



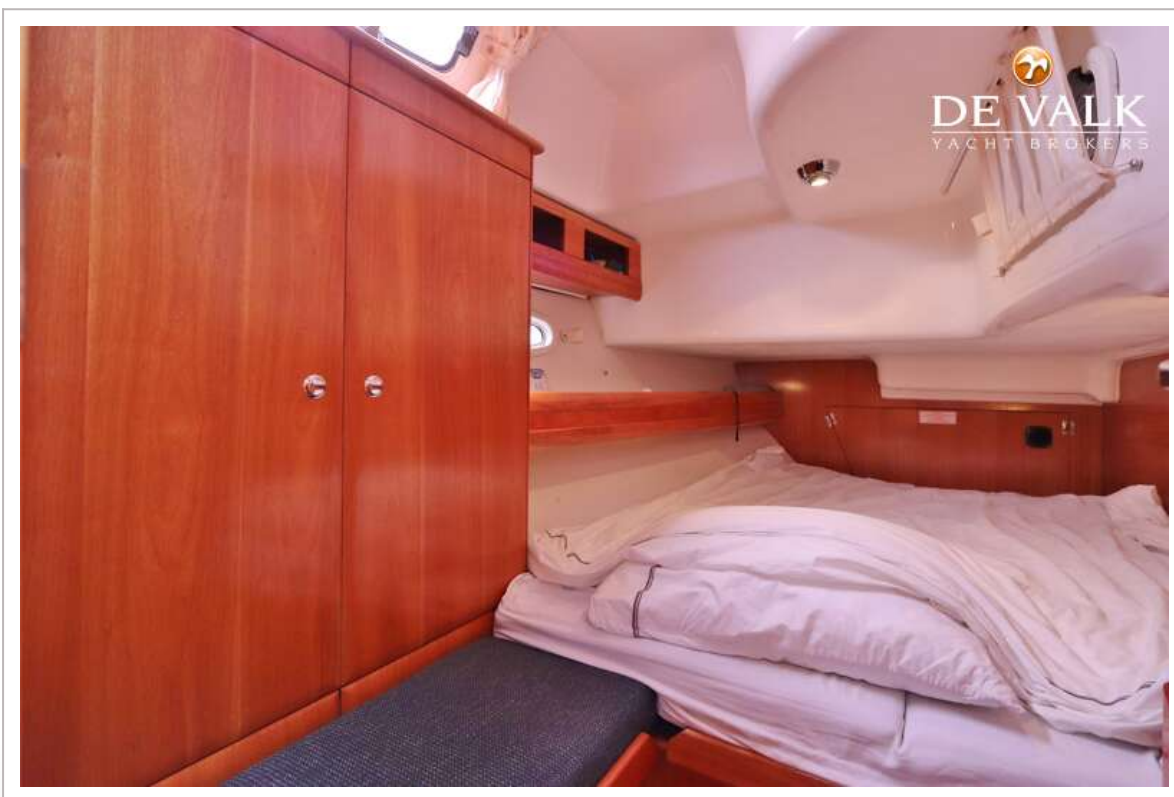
BAVARIA 42 CRUISER



BAVARIA 42 CRUISER



BAVARIA 42 CRUISER



BAVARIA 42 CRUISER

