



ISLAND PACKET SP CRUISER 41



ISLAND PACKET SP CRUISER 41

BROKER'S COMMENTS

Best of both worlds, maximum flexibility. Island Packet Cruiser is a luxury motor sailor, capable as long distance blue water cruiser and as motor yacht in f.i. French channels after removing the mast. The pilot house gives max. protection at any weather condition while sailing, and offers great views. The galley is a dream, what a working space! The outside relax area is, very clever, in front of the cabin. Excellent build quality, this IP is surprisingly designed with spacious living room on board for long periods. Note: pictures taken just after Sahara sand storm, yacht is cleaned now.

Willem Koopmans

SPECIFICATIONS

Dimensions	12.65 x 3.89 x 1.12 (m)	Builder	Island Packet Yachts
Built	2007	Cabins	2
Material	GRP	Berths	6
Engine(s)	1 x Yanmar 4JH4-HTE diesel	Hp/Kw	110.00 (hp), 80.85 (kw)
Asking price	sold (VAT)	Lying	contact sales office

CONTACT

Sales office	De Valk Costa Blanca	Telephone	+34 96 50 21 569
Address	Costa Blanca Region 03730 Javea Alicante ES	E-mail	costablanca@devalk.nl

DISCLAIMER

These particulars are given in good faith as supplied but cannot be guaranteed.



ISLAND PACKET SP CRUISER 41

GENERAL

Model	ISLAND PACKET SP CRUISER 41
Type	sailing yacht
LOA (m)	12,65
LWL (m)	10,60
Beam (m)	3,89
Draft (m)	1,12
Air draft (m)	17,00
Headroom (m)	2,10
Year built	2007
Builder	Island Packet Yachts
Country	U.S.A.
Displacement (t)	10
CE norm	A
Hull material	GRP
Hull colour	white
Hull shape	S-bilged
Keel type	long keel
Bilge keels	yes
Superstructure material	GRP
Deck material	GRP
Deck finish	non-skid moulded in
Cockpit deck finish	non-skid moulded in
Antifouling (year)	2019
Window frame	aluminium
Window material	tempered glass
Fuel tank (litre)	GRP 835
Level indicator (fuel tank)	yes
Freshwater tank (litre)	GRP 492
Level indicator (freshwater)	yes
Blackwater tank (litre)	GRP 189



ISLAND PACKET SP CRUISER 41

Wheel steering	mechanical
Inside helm position	yes
Emergency tiller	yes
Extra info	We apologize for the dirty vessel, night before pictures taken
Extra info	A sand Sahara storm passed by.

ACCOMMODATION

Cabins	2
Berths	6
Interior	teak White finish and teak
Floor	teak and holly Carpets
Open cockpit	yes
Pilot house/deck saloon	yes
Headroom saloon (m)	2,1
Heating	diesel ducted hot air Webasto
Navigation center	yes
Chart table	yes
Aft Cabin	Guest cabin
Dinette	Foldable
Opening door to cockpit	yes
Galley	yes
Countertop	Duropol White topping
Sink	stainless steel Double
Cooker	Force Ten
Oven	Force Ten
Microwave	yes
Fridge	yes
Freezer	yes
Hot water system	220V + engine Boiler, 40 ltr
Water pressure system	electrical
Manual and/or foot pump	yes



ISLAND PACKET SP CRUISER 41

Hot water tap	yes
Owners cabin	double bed In front
Bed length (m)	2,05
Wardrobe	hanging/drawers/shelves
Bathroom	yes
Toilet	shared
Toilet system	Modern Blake
Wash basin	in the bathroom
Shower	shared
Guest cabin 1	twin single Converting into one double bed
Bed length (m)	2,05
Wardrobe	hanging and shelves
Bathroom	shared
Toilet	shared
Toilet system	yes
Wash basin	in the bathroom
Shower	shared

MACHINERY

No of engines	1
Make	Yanmar
Type	4JH4-HTE
HP	110
kW	80.85
Fuel	diesel
Year installed	2007
Maximum speed (kn)	8,5
Cruising speed (kn)	7
Consumption (l/hr)	4
Engine hours	2350
Engine cooling system	freshwater heat exchanger



ISLAND PACKET SP CRUISER 41

Engine controls	yes
Bowthruster	6 hp Sidepower
Propeller type	folding Max Prop, bronze
Propeller blades	3
Manual bilge pump	yes
Electric bilge pump	yes
Generator	Not yet present, but installation is completely prepared
Batteries	5x AGM
Inverter	Mastervolt, 2kW
Solar panel	3x 140Watt
Extra info	Extra propellor, bronze, fixed
Extra info	Engine serviced 2020 (due to Corona)

NAVIGATION

Compass	yes
Electric compass	On pilot
Depth sounder/log	Raymarine ST60
Log	Raymarine ST60
Windset	Raymarine ST60 (needs sensor check)
VHF	Raymarine 240E
Autopilot	Raymarine ST 6001
Rudder angle indicator	On pilot
Radar/GPS/plotter	Raymarine E 120
AIS transponder	yes
EPIRB	Mc Murdo
Navigation lights	yes

EQUIPMENT

Cockpit cushions	Partly
Cockpit table	yes
Bathing platform	yes



ISLAND PACKET SP CRUISER 41

Boarding ladder	stainless steel
Transom door	yes
Anchor	Rocna 25 kg
Anchor chain	60 mtr
Windlass	electrical Muir
Dinghy	yes
Outboard	Mariner 4pk, 4 stroke
Life raft	Off-shore, needs service
Life raft (pers)	4
Wiper	yes
Radio-cd player	Fusion
iPod connection	yes
Sub-woofer	yes
Speakers in salon	yes
Clock - barometer	yes
Fire extinguisher	yes
Latest extinguisher survey	Expired

RIGGING

Rigging	sloop
Standing rigging	wire
Material mast	aluminium
Spreaders	yes
Keel stepped mast	yes
Mainsail	New 2014
Stoway mast	yes
Jib	New 2013, on furler
Genoa	New 2014
Genoa furler	yes
Self tacking jib installation	yes
Primary sheet winch	Electric, out- and inside



ISLAND PACKET SP CRUISER 41

Genoa sheetwinches

Electric, out- and inside

Multifunctional winches

Control from cockpit and inside steering position

Extra info

Rigging report 2019 available



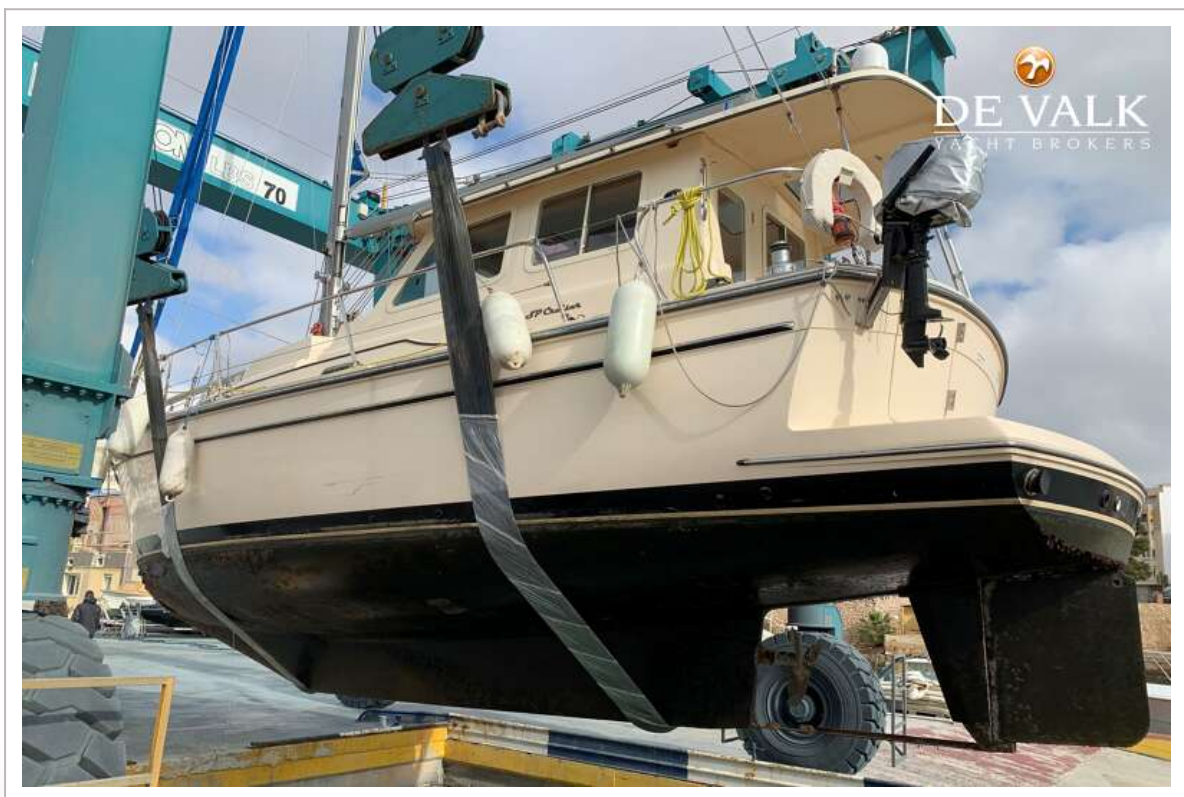
ISLAND PACKET SP CRUISER 41



ISLAND PACKET SP CRUISER 41



ISLAND PACKET SP CRUISER 41



ISLAND PACKET SP CRUISER 41



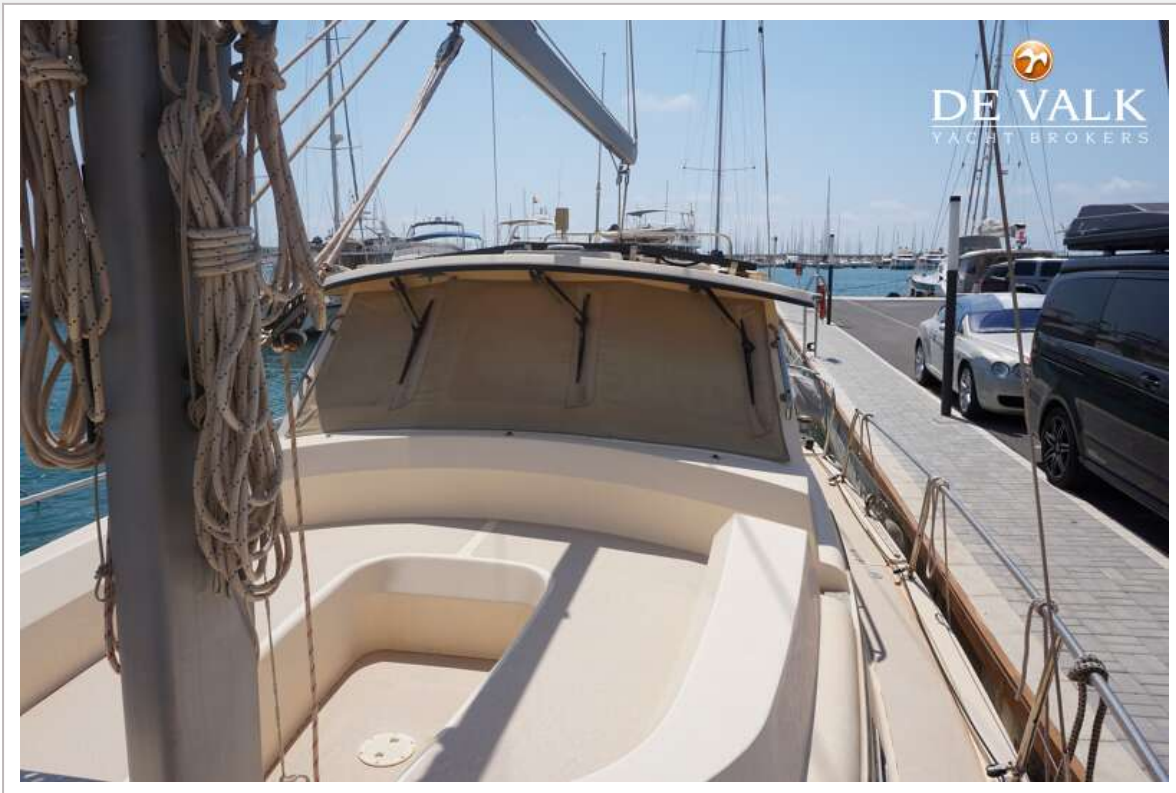
ISLAND PACKET SP CRUISER 41



ISLAND PACKET SP CRUISER 41



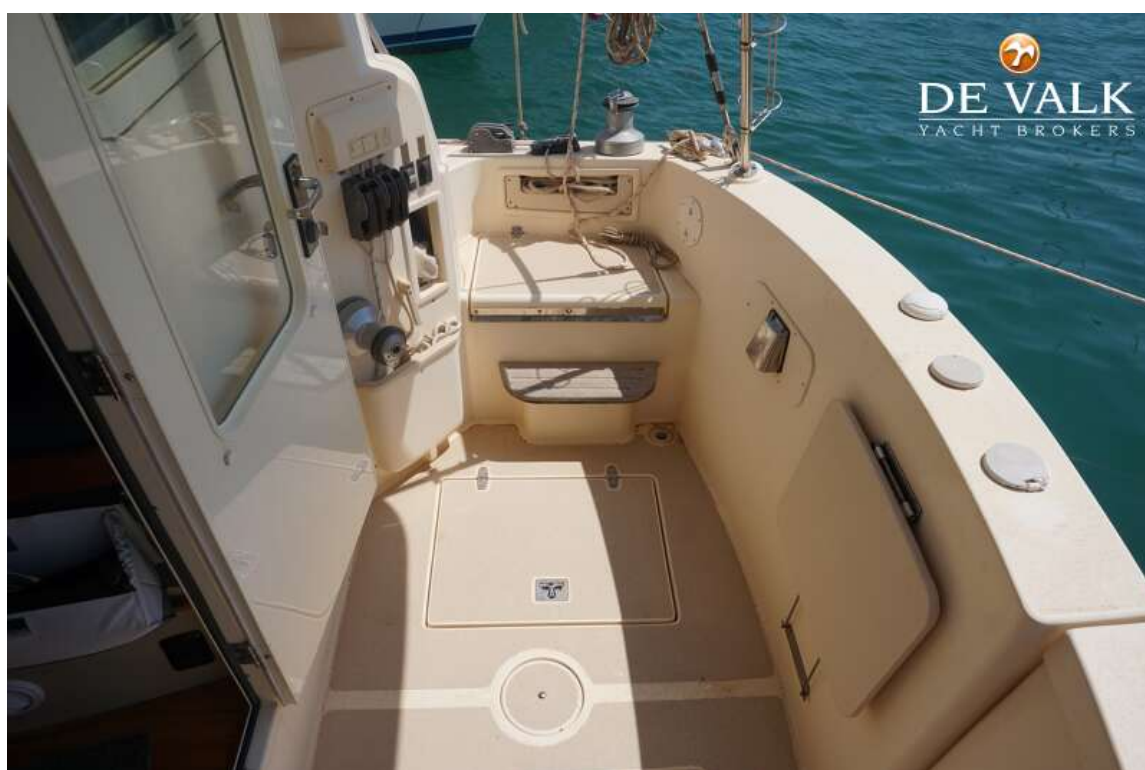
ISLAND PACKET SP CRUISER 41



ISLAND PACKET SP CRUISER 41



ISLAND PACKET SP CRUISER 41



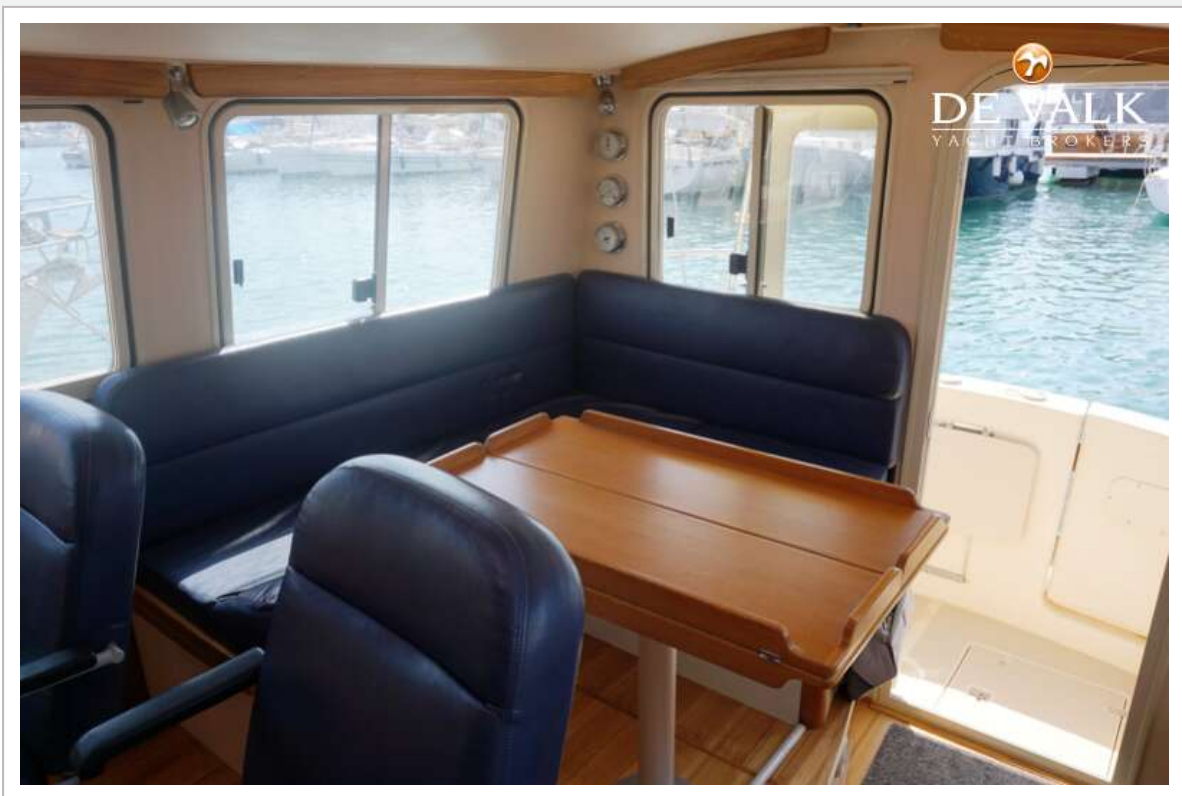
ISLAND PACKET SP CRUISER 41



ISLAND PACKET SP CRUISER 41



ISLAND PACKET SP CRUISER 41



ISLAND PACKET SP CRUISER 41



ISLAND PACKET SP CRUISER 41



ISLAND PACKET SP CRUISER 41



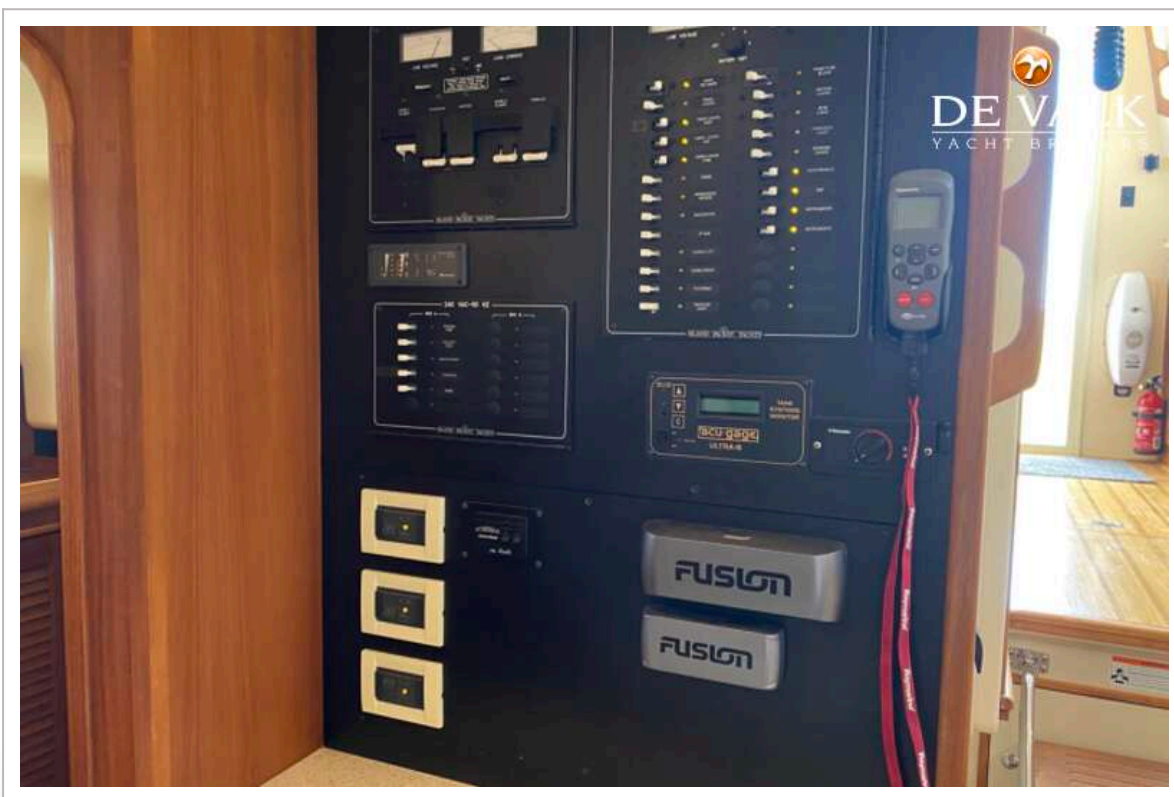
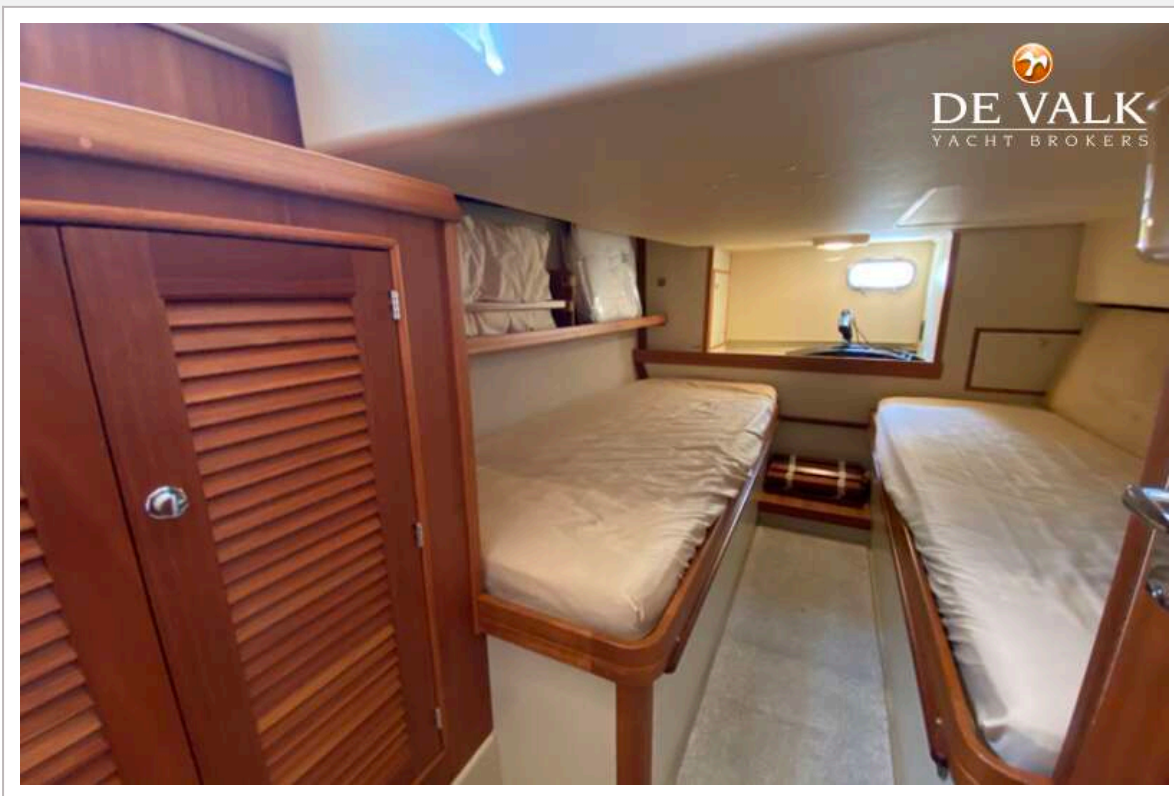
ISLAND PACKET SP CRUISER 41



ISLAND PACKET SP CRUISER 41



ISLAND PACKET SP CRUISER 41



ISLAND PACKET SP CRUISER 41



