



DE VALK
YACHT BROKERS



ATLANTIC 36 ZK



DE VALK
YACHT BROKERS

BROKERAGE | CHARTER | BERTHS | FINANCE | INSURANCE | YACHT MANAGEMENT

ATLANTIC 36 ZK

BROKER'S COMMENTS

This Atlantic 36 "blue watercruiser" was built by one of the best aluminium shipyards in the Netherlands, renowned for its quality and craftsmanship. This design by Dick Zaal excels in performance, seaworthiness and comfort. With her swingkeel, she has unlimited sailing possibilities and the fixed doghouse ensures comfortable sailing. She is complete and very well maintained. This season she was launched with professional painting of the superstructure, hull and underwatership. This beautiful Atlantic 36 is located in Hindeloopen and can be visited 7 days a week!

Henri van Eelen

SPECIFICATIONS

Dimensions	11.00 x 3.75 x 0,90 / 2.30 (m)	Builder	Jachtwerf Atlantic
Built	1993	Cabins	2
Material	Aluminium	Berths	5
Engine(s)	1 x Yanmar 3JH2 E diesel	Hp/Kw	35.00 (hp), 25.73 (kw)
Asking price	sold (VAT)	Lying	at sales office

CONTACT

Sales office	De Valk Hindeloopen B.V.	Telephone	+31 514 52 40 00
Address	Oosterstrand 1 8713 JS Hindeloopen NL	E-mail	hindeloopen@devalk.nl

DISCLAIMER

These particulars are given in good faith as supplied but cannot be guaranteed.



ATLANTIC 36 ZK

GENERAL

Model	ATLANTIC 36 ZK
Type	sailing yacht
LOA (m)	11,00
LWL (m)	10,48
Beam (m)	3,75
Draft (m)	2,30
Draft min (m)	0,90
Air draft (m)	18,50
Headroom (m)	1,90
Year built	1993
Builder	Jachtwerf Atlantic
Country	The Netherlands
Designer	Dick Zaal
Displacement (t)	9
Ballast (tonnes)	3.4
Hull material	aluminium
Hull colour	Stars and Stripes Blue - new 2021
Hull shape	round-bilged
Keel type	centreboard
Superstructure material	aluminium
Rubbing strake	Rope
Deck material	aluminium
Deck finish	teak
Superstructure deck finish	non-skid paint
Cockpit deck finish	non-skid paint
Antifouling (year)	New 2021
Window frame	aluminium
Window material	polycarbonate
Deckhatch	yes
Insulation	foam



Fuel tank (litre)	aluminium - 135 ltr - double fuel filter
Level indicator (fuel tank)	rough measuring
Freshwater tank (litre)	stainless steel 2x 220 ltr
Level indicator (freshwater)	rough measuring
Blackwater tank (litre)	stainless steel Approx. 60 ltr
Blackwater tank extraction	deck extraction + uw line
Wheel steering	mechanical Inklapbaar stuurwiel
More info on paintwork	Painted 03-2021 Hull; Alw Grip stars stripes blue Superstructure; Awl Grip off white Superstructure; Awl Grip pearl grey Antifouling; International

ACCOMMODATION

Cabins	2
Berths	5
Interior	beech
Floor	wood - painted 2019
Open cockpit	yes
Doghouse	yes
Saloon	yes
Headroom saloon (m)	1,90 mtr.
Heating	diesel ducted hot air Webasto
Navigation center	yes
Chart table	yes
Aft Cabin	yes
Sliding door to cockpit	slides down
Galley	yes
Countertop	plastic
Sink	stainless steel - Double
Cooker	calor gas - 3 burner
Oven	In cooker
Fridge	Isotherm
Hot water system	220V + engine



ATLANTIC 36 ZK

Water pressure system	electrical
Manual and/or foot pump	seawater
Kettle	18 plates, 12 mugs/cups, 16 glasses, cutlery 6 persons
Owners cabin	v-bed - slatted frames + pocket spring mattress 15cm
Bed length (m)	2.10 mtr.
Wardrobe	hanging and shelves
Guest cabin 1	single bed
Bed length (m)	2.00 mtr.
Wardrobe	shelves
Bathroom	shared
Toilet	Yes
Toilet system	manual RM 69
Wash basin	Yes
Shower	Yes

MACHINERY

No of engines	1
Make	Yanmar
Type	3JH2 E
HP	35
kW	25,73
Fuel	diesel
Maximum speed (kn)	7
Cruising speed (kn)	6
Engine hours	2800
Engine cooling system	freshwater heat exchanger
Drive	shaft
Engine controls	bowden cable
Gearbox	mechanical
Bowthruster	electric
Exhaust	watercooled



Propeller type	folding
Propeller blades	2
Propeller shaft material	stainless steel
Shaft lubrication	water
Manual bilge pump	yes
Electric bilge pump	yes
Start battery	yes
Service battery	yes
Battery monitor	yes
Battery charger	Mastervolt
Battery charger/inverter	Victron
Solar panel	yes
Shorepower	with cable

NAVIGATION

Compass	Plastimo
Electric compass	Autohelm ST50
Depth sounder	Raymarine ST60+
Log	Autohelm ST50
Windset	Raymarine I60
Repeater	Inside: Autohelm ST50
VHF	Shipmate
Autopilot	Autohelm ST6000
Radar	yes
GPS	Outside: Raymarine RN 300 Inside: Raymarine RN 300
Radar/GPS/plotter	Outside: Raymarine E120
Navtex	must be updated, never used Inside: 4ICS
PC connection	Inside navigation table
Personal MOB transmitter	On GPS mob button, hold position
Navigation lights	yes
Extra info	Inside navigation table 12V



EQUIPMENT

Fixed windscreen	yes
Fixed hardtop	yes
Window cover	2x
Cockpit table	yes
Bathing platform	yes
Boarding ladder	stainless steel - with teak steps
Bow ladder	yes
Deck shower	yes
Anchor	CQR Plough
Anchor chain	yes
Windlass	electrical
Sea railing	wire
Grab rail (superstructure)	aluminium
Pushpit	yes
Pulpit	yes
Lifebuoy	yes
Danbuoy	broken light
Safety lines on deck	yes
Radar reflector	Tri-Lens
Fenders	Yes
Mooring lines	Yes
Spare parts	yes
Tools	for engine
Radio-cd player	yes
Speakers in salon	yes
Fire extinguisher	3x
Latest extinguisher survey	03-2021

RIGGING

Rigging	sloop-cutter
---------	--------------



Standing rigging	wire - 2015
Material mast	aluminium coated
Spreaders	2 pair
Mainsail	2x approx. Quantum 43m² 2014
Mainsail cover	2x
Battcars	yes
Fully battened mainsail	yes
Cutterstay	yes
Jib	2x Cutter Jib Quantum ca. 13m² 2014
Genoa	2x Genoa Quantum ca. 43m² 2014
Genoa furler	Reckmann
Cutter furler	Reckmann
A-symetric spi	Approx. 116m²
Removable innerforestay	Innerforestay not removable
Stormjib	Yes
Reefing System	quick-one-line-reefing - 2 reefs
Backstay adjuster	hydraulic
Boomvang	gasspring
Primary sheet winch	yes
Genoa sheetwinches	yes
Halyard winches	yes
Winchcovers	5x
Spi-pole	aluminium - painted
Extra info	Lazy Jacks



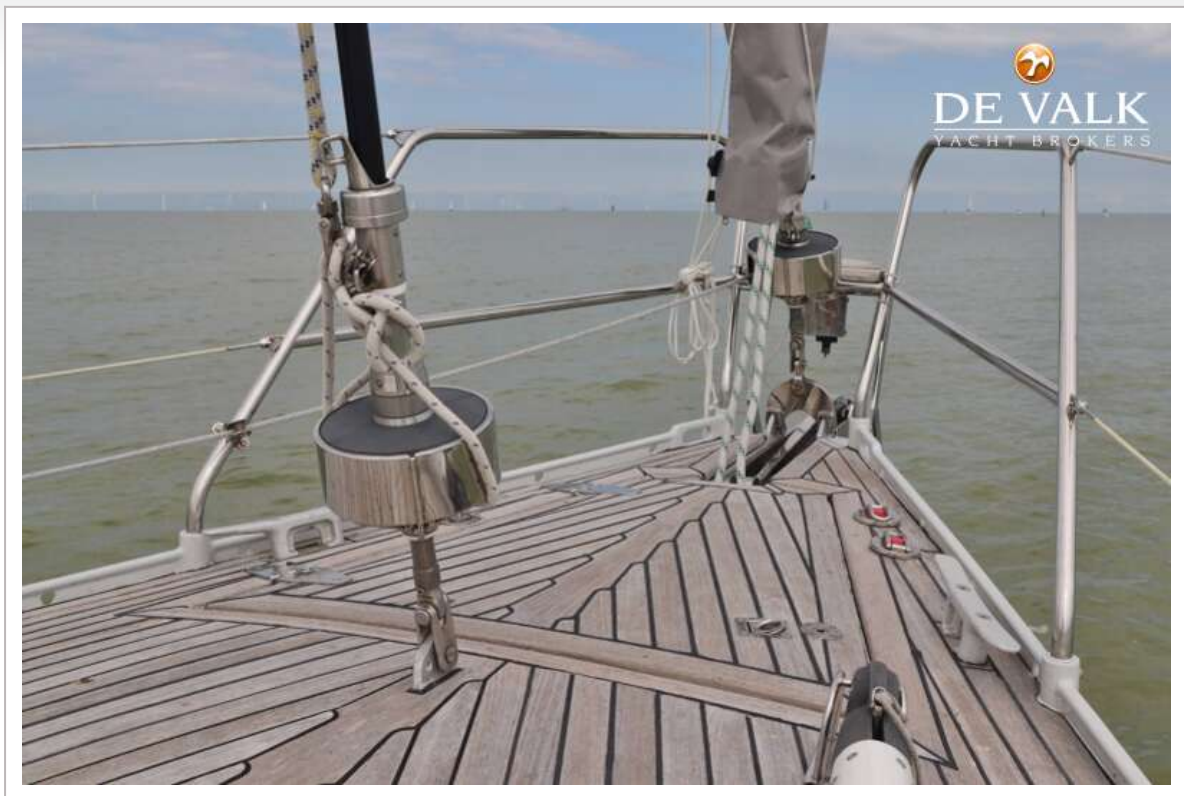
ATLANTIC 36 ZK



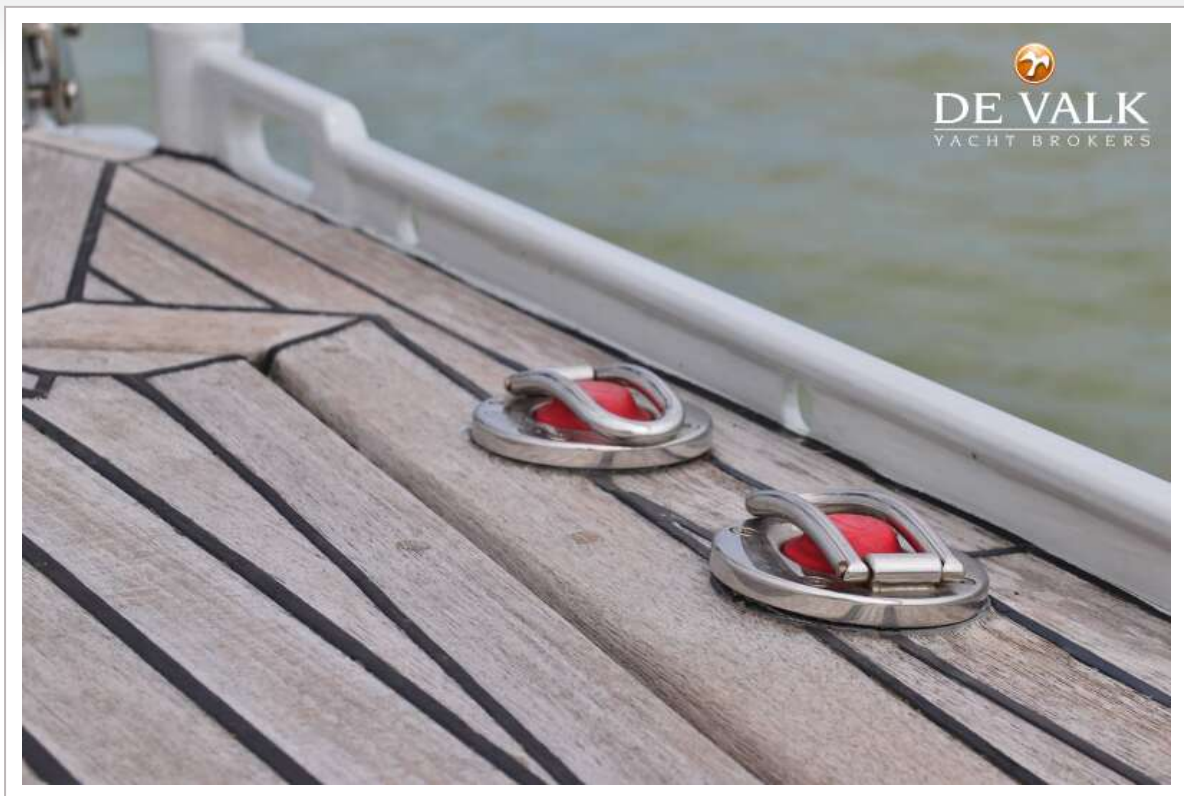
ATLANTIC 36 ZK



ATLANTIC 36 ZK



ATLANTIC 36 ZK



ATLANTIC 36 ZK



ATLANTIC 36 ZK



ATLANTIC 36 ZK



ATLANTIC 36 ZK



ATLANTIC 36 ZK



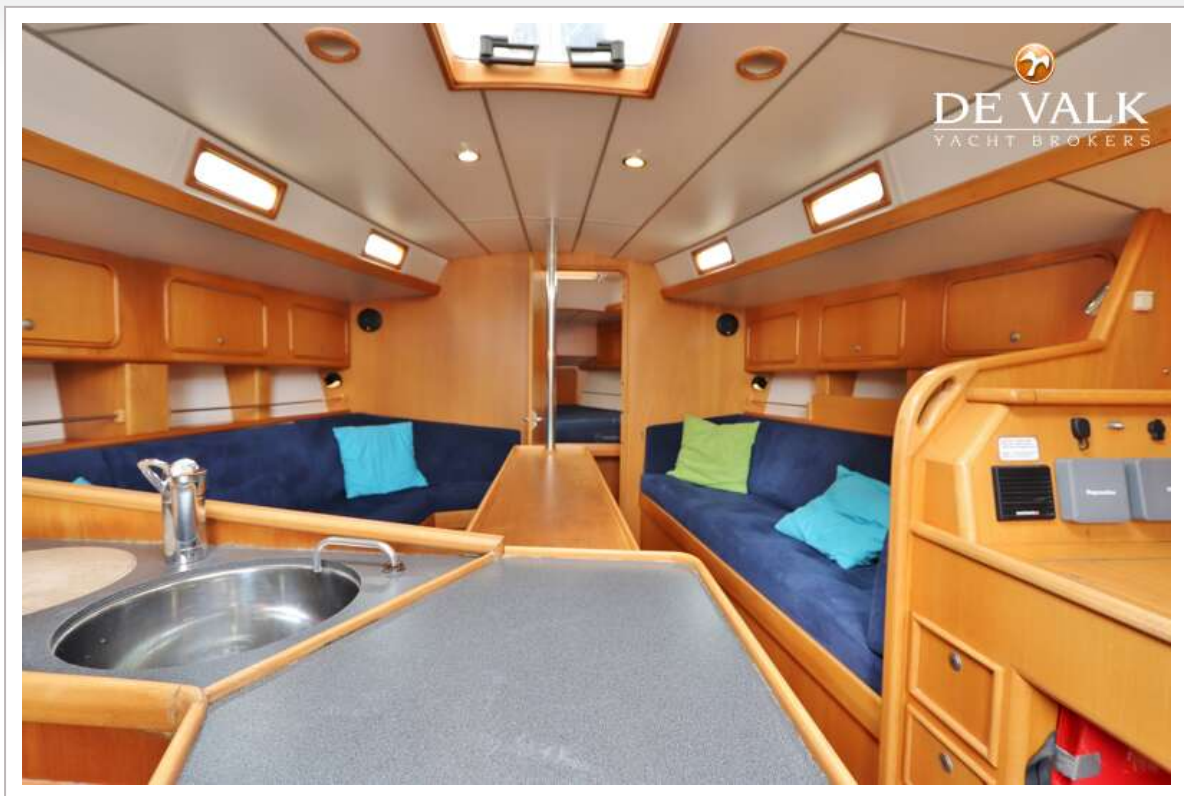
ATLANTIC 36 ZK



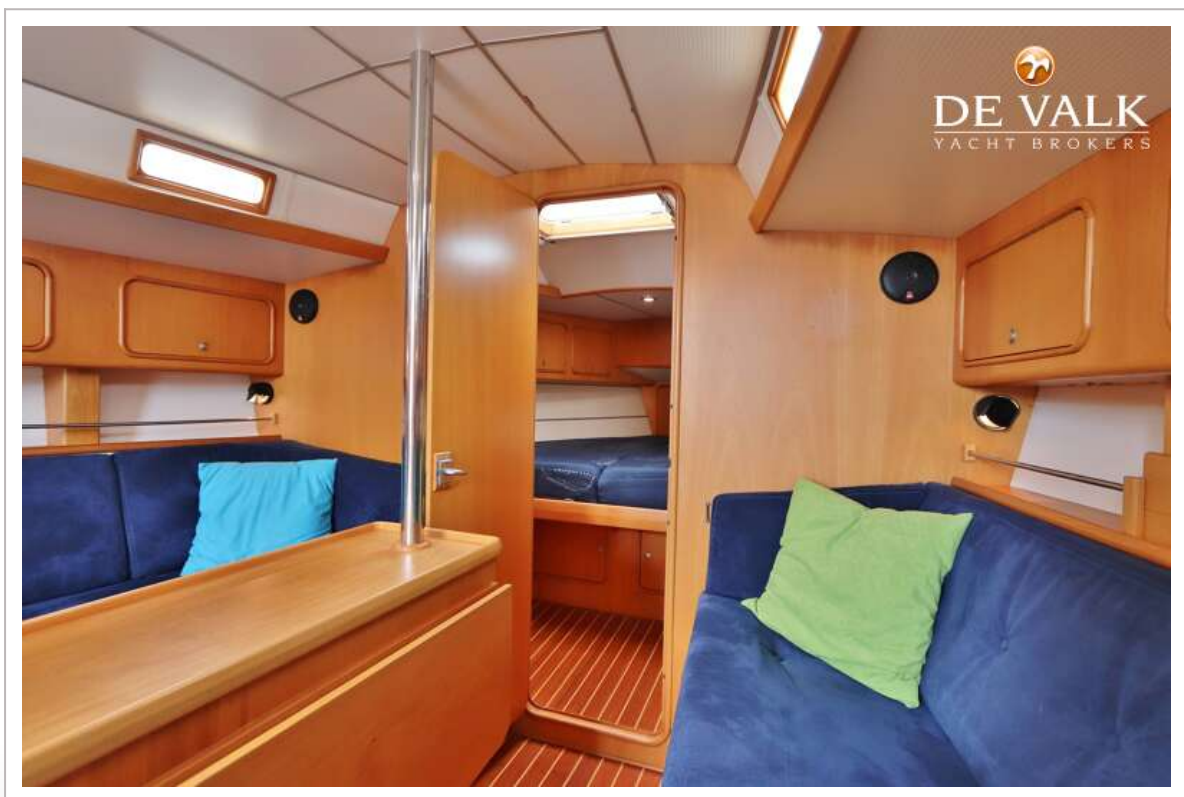
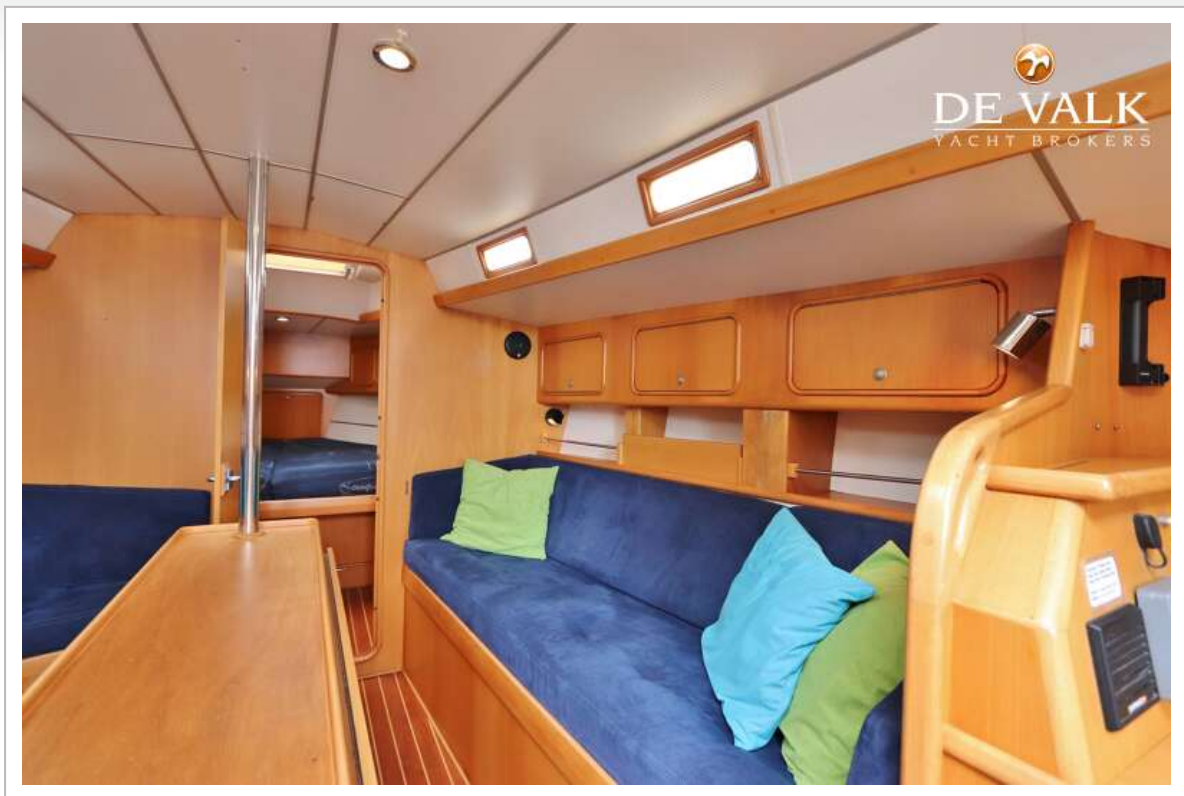
ATLANTIC 36 ZK



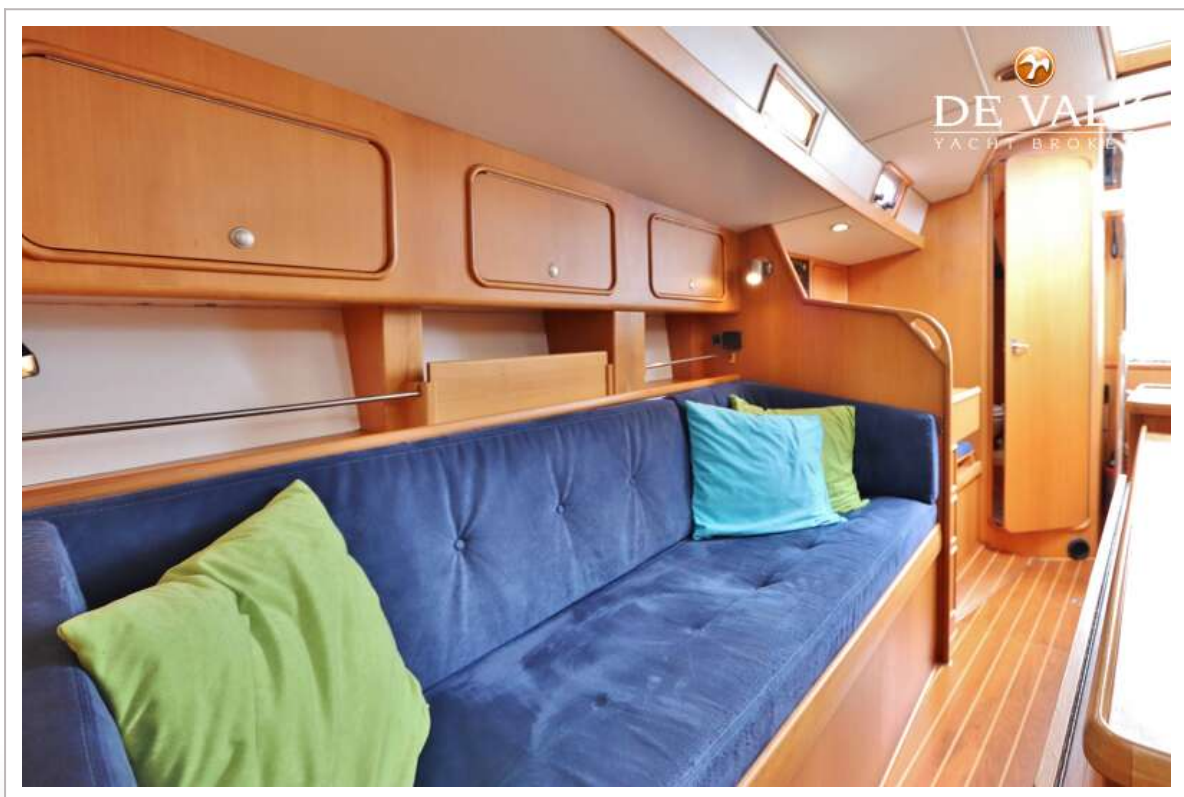
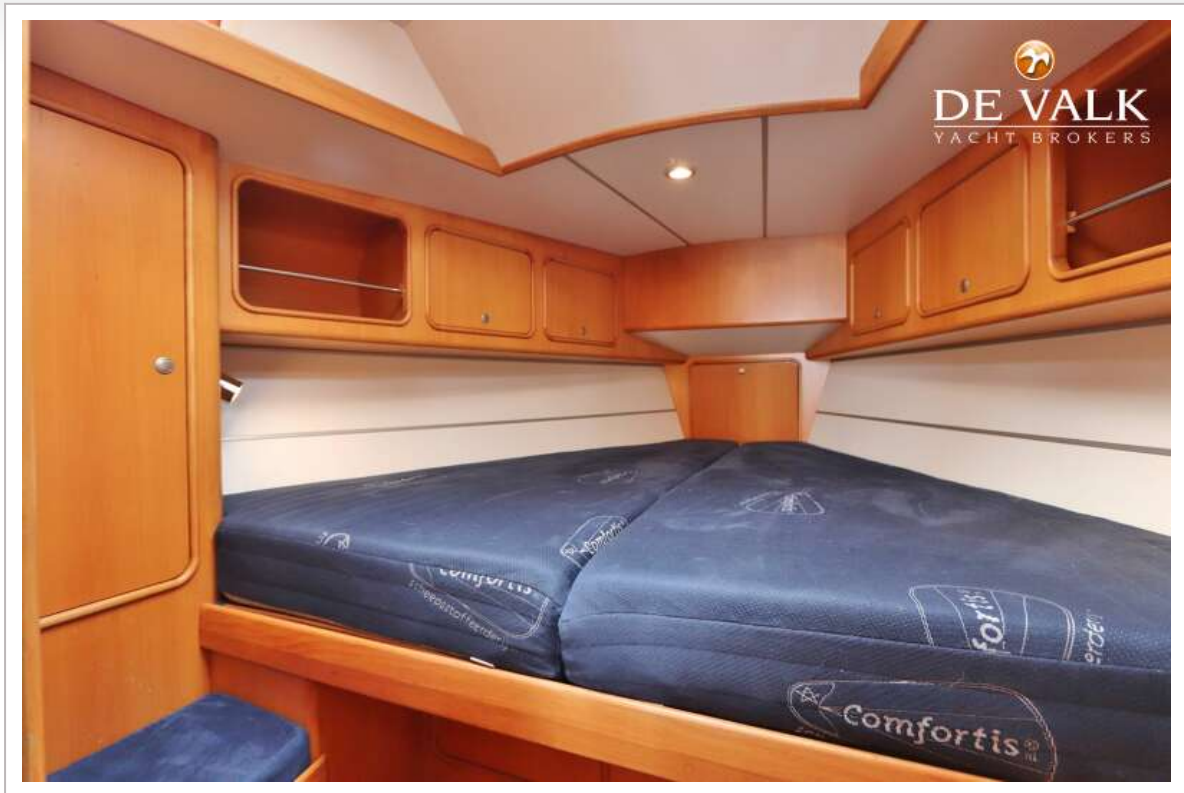
ATLANTIC 36 ZK



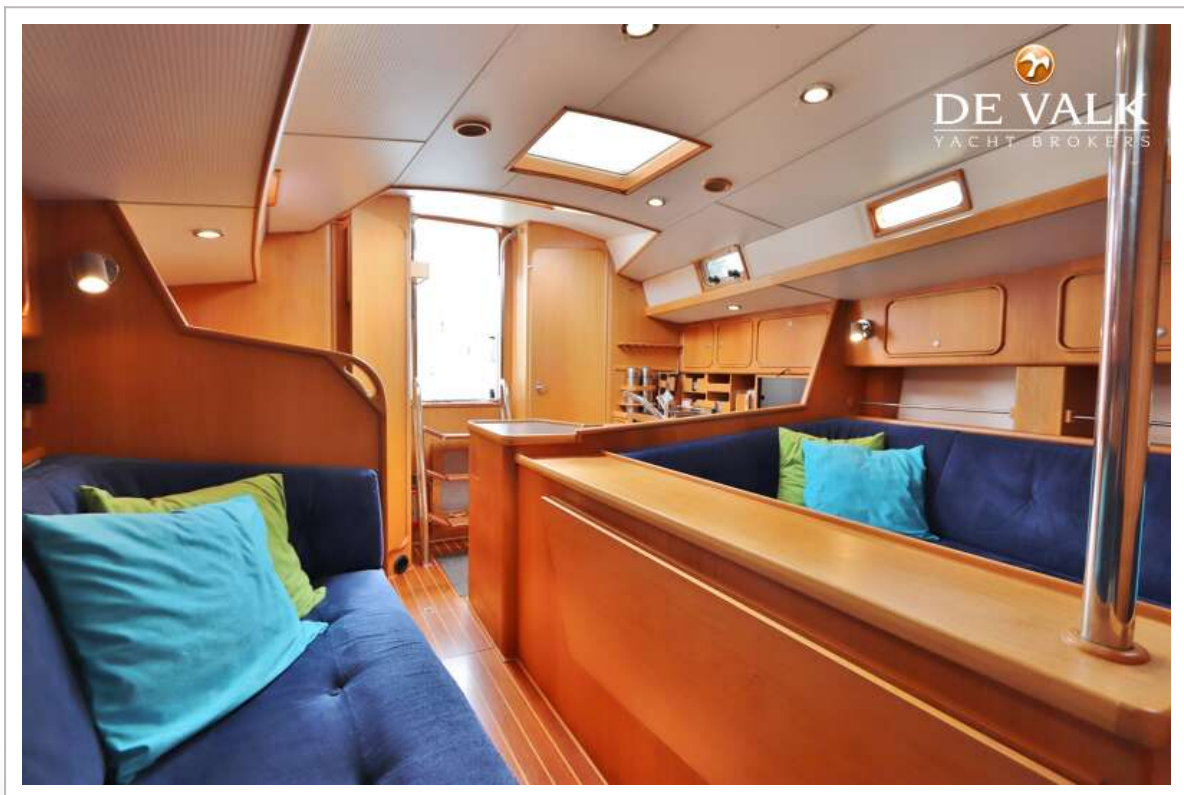
ATLANTIC 36 ZK



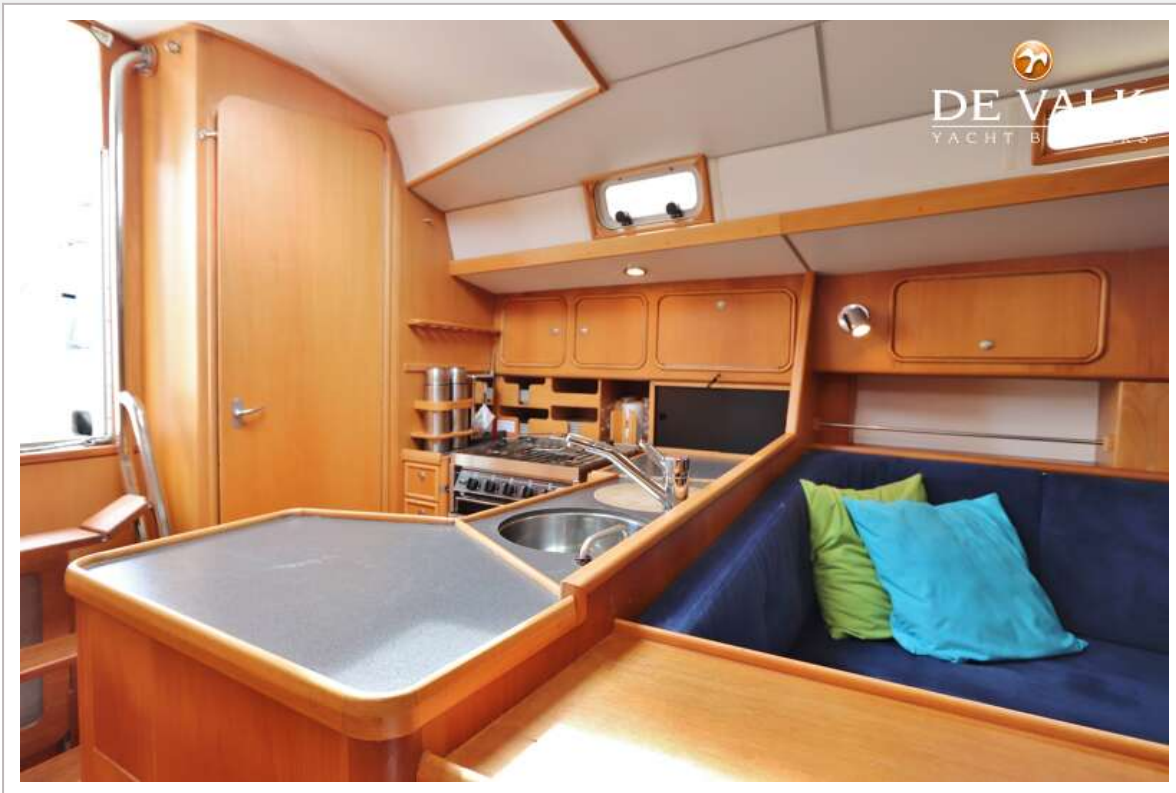
ATLANTIC 36 ZK



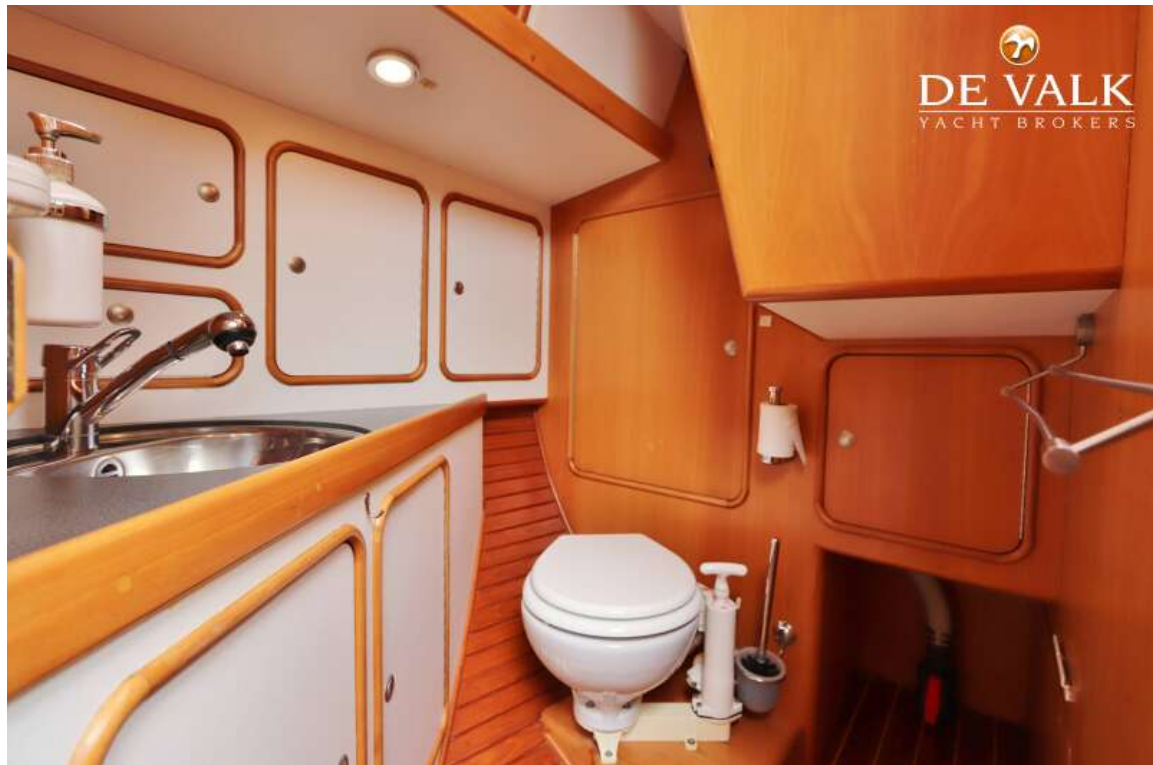
ATLANTIC 36 ZK



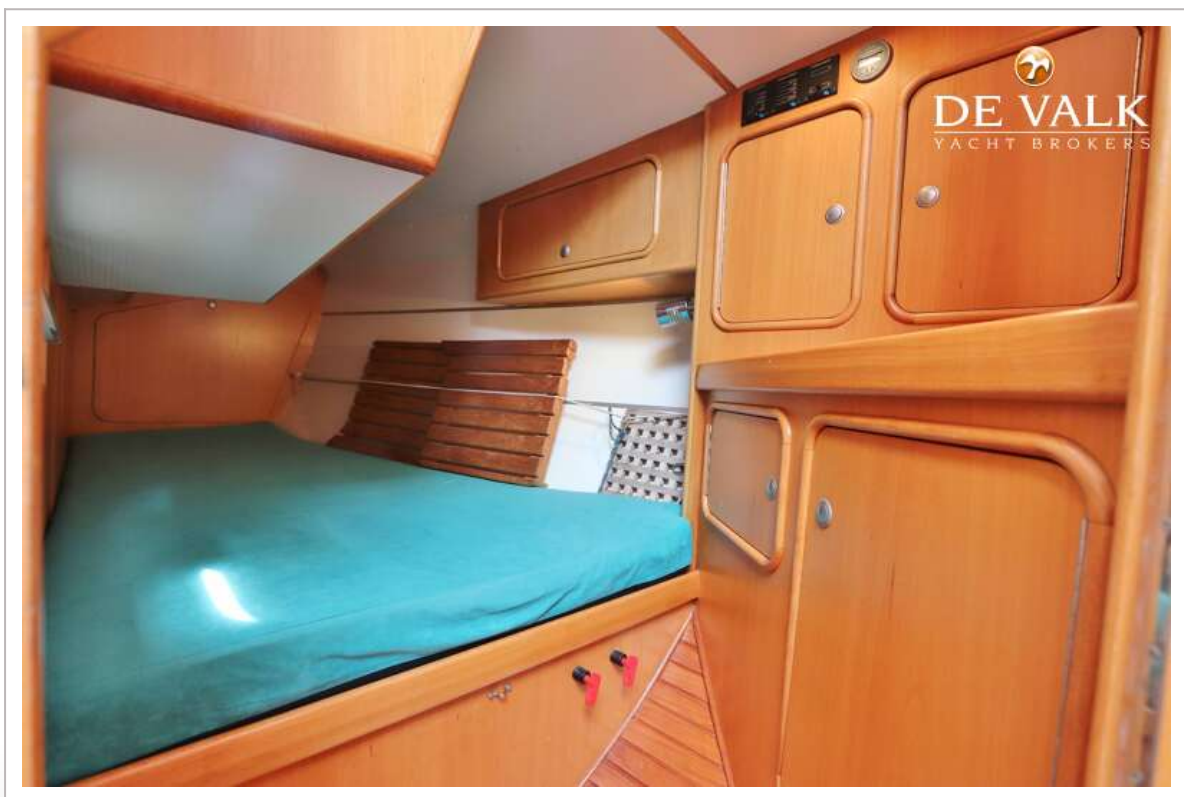
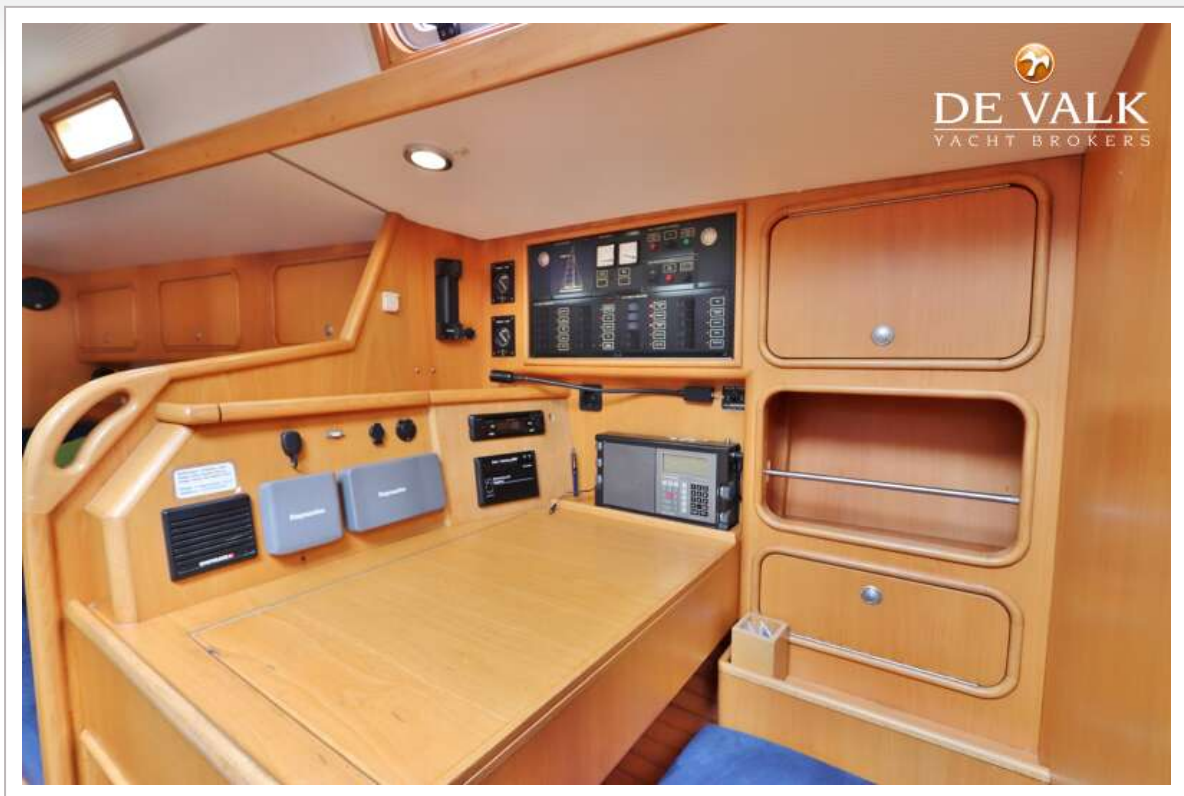
ATLANTIC 36 ZK



ATLANTIC 36 ZK



ATLANTIC 36 ZK



ATLANTIC 36 ZK

