



BOTTER JACHT

## BROKER'S COMMENTS

Botter Jacht Groote Beer represents an important part of the national dutch seagoing and shipbuilding history. Botter Jacht Groote beer is fully restored and ready to go. Her meticulous and careful restoration combined traditional woodworking craftsmanship incorporating modern technology to ensure safe and comfortable sailing both on extended long distance family cruises as well as short handed day-trips.

*Stein Dubbeldam*

## SPECIFICATIONS

<b>Dimensions</b>	16.40 x 5.54 x 2,30 / 1.20 (m)	<b>Builder</b>	Janus Kok, Huizen the Netherlands
<b>Built</b>	1940	<b>Cabins</b>	3
<b>Material</b>	Wood	<b>Berths</b>	6
<b>Engine(s)</b>	1 x Vetus DT64495E diesel	<b>Hp/Kw</b>	159.00 (hp), 117.02 (kw)
<b>Asking price</b>	sold (VAT )	<b>Lying</b>	at sales office

## CONTACT

<b>Sales office</b>	De Valk Hindeloopen B.V.	<b>Telephone</b>	+31 514 52 40 00
<b>Address</b>	Oosterstrand 1 8713 JS Hindeloopen NL	<b>E-mail</b>	hindeloopen@devalk.nl

## DISCLAIMER

These particulars are given in good faith as supplied but cannot be guaranteed.



## GENERAL

<b>Model</b>	BOTTER JACHT
<b>Type</b>	sailing yacht
<b>LOA (m)</b>	16,40
<b>LWL (m)</b>	13,61
<b>Beam (m)</b>	5,54
<b>Draft (m)</b>	1,20
<b>Draft min (m)</b>	2,30
<b>Air draft (m)</b>	20,00
<b>Air draft min (m)</b>	2,50
<b>Headroom (m)</b>	2,00
<b>Year built</b>	1940
<b>Launched</b>	1946
<b>Builder</b>	Janus Kok, Huizen the Netherlands
<b>Country</b>	The Netherlands
<b>Designer</b>	Janus Kok
<b>Displacement (t)</b>	38
<b>CE norm</b>	NA
<b>Hull material</b>	wood
<b>Hull colour</b>	brown Varnished oak
<b>Hull shape</b>	flat bottom
<b>Superstructure material</b>	wood Teak and oak
<b>Deck material</b>	wood
<b>Deck finish</b>	teak
<b>Superstructure deck finish</b>	teak
<b>Cockpit deck finish</b>	teak
<b>Antifouling (year)</b>	2021
<b>Deckhatch</b>	Teak
<b>Portholes</b>	brass
<b>Fuel tank (litre)</b>	stainless steel   Aprox 700 ltr.
<b>Level indicator (fuel tank)</b>	VDO



Freshwater tank (litre)	steel
Level indicator (freshwater)	VDO
Outside helm position	yes
Tiller	yes
More info on hull	Fully rebuilt at Botterwerft Bunschoten Spakenburg
Extra info	Immaculate condition after extensive rebuilt
Extra info	Extensive publications history is available on request
Extra info	Extensive picture history is available in my account

## ACCOMMODATION

Cabins	3
Berths	6
Interior	Oak
Layout	Private
Floor	Teak
Open cockpit	yes
Saloon	yes
Headroom saloon (m)	2,00
Heating	central heating
Navigation center	yes
Chart table	yes
Opening door to cockpit	yes
Galley	Alongside to starboard
Countertop	granite
Sink	stainless steel
Cooker	electric   Eno Force   4 burner
Oven	yes
Extractor	yes
Microwave	yes
Fridge	Coolamtic
Freezer	Coolmatic



Hot water system	yes
Water pressure system	yes
Owners cabin	yes
Bed length (m)	2,00
Wardrobe	hanging and shelves
Bathroom	shared
Toilet	shared
Toilet system	electric
Wash basin	in the cabin
Shower	shared
Guest cabin 1	double bed + single bed
Bed length (m)	2,00
Wardrobe	hanging and shelves
Wash basin	in the cabin
Guest cabin 2	twin single
Bed length (m)	2,00
Wardrobe	hanging and shelves
Wash basin	in the cabin

## MACHINERY

No of engines	1
Make	Vetus
Type	DT64495E
HP	159
kW	117.02
Fuel	diesel
Year installed	2005
Maximum speed (kn)	8
Cruising speed (kn)	6
Consumption (l/hr)	6
Engine hours	665.8



Engine cooling system	freshwater heat exchanger
Drive	shaft
Shaft seal	yes
Engine controls	bowden cable
Gearbox	mechanical
Propeller type	fixed
Propeller blades	4
Propeller shaft material	stainless steel
Shaft lubrication	water
Manual bilge pump	yes
Electric bilge pump	yes
Bilge alarm	yes
Electrical installation	12 V DC and 220 V AC
Generator	Mastervolt Whispergen 5 KVA
Running hours generator	243
Batteries	yes
Start battery	2x Bosch 12V 140 Ah
Service battery	5x Bosch 12V 240 Ah
Battery monitor	yes
Battery charger	Mastervolt mas 24/75
Inverter	Mastervolt mass 24/2500
Shorepower	with cable

## NAVIGATION

Compass	yes
Depth sounder	Raymarine   Needs Service
Log	Raymarine   Needs Service
Windset	Raymarine
VHF	Raymarine   Needs Service
Radar/GPS/plotter	Raymarine   Needs Service
Navigation lights	yes



## EQUIPMENT

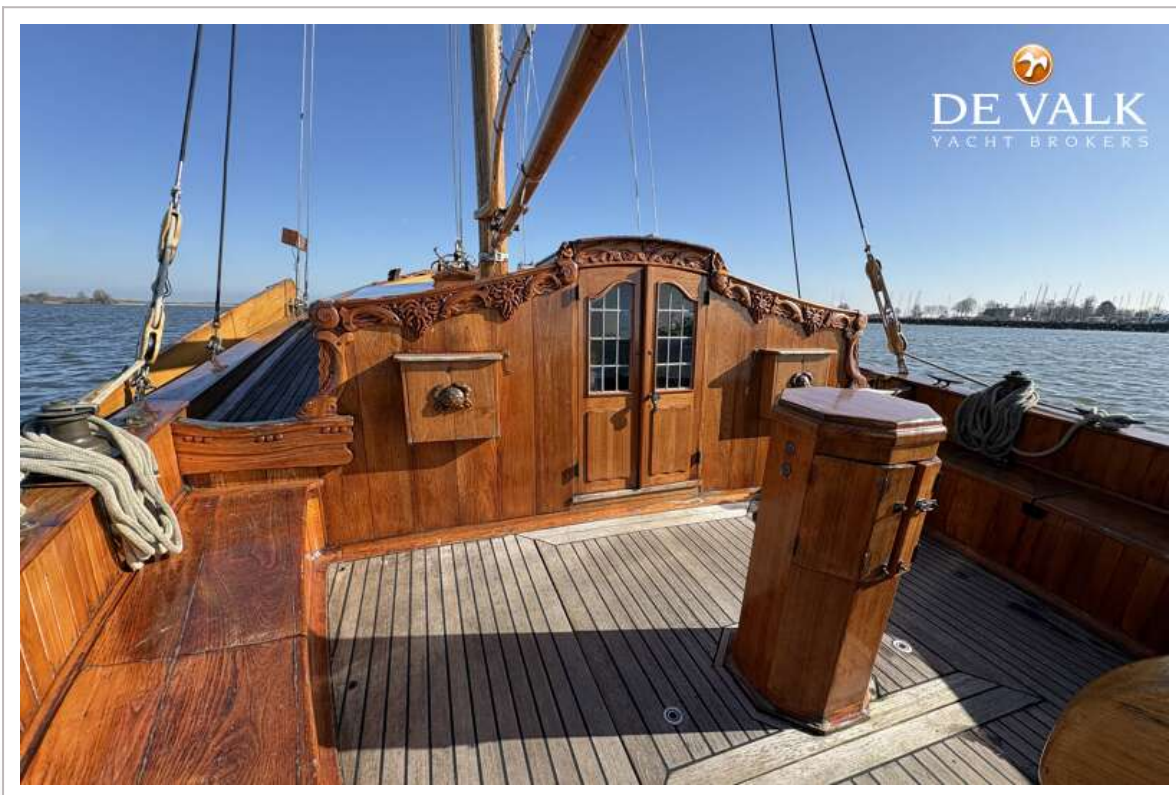
Cockpit cover	yes
Cockpit cushions	yes
Cockpit table	yes
Anchor	yes
Anchor chain	yes
Windlass	hydraulic
Fenders	yes
Mooring lines	yes
Radio	yes
Speakers in salon	yes
Fire extinguisher	yes

## RIGGING

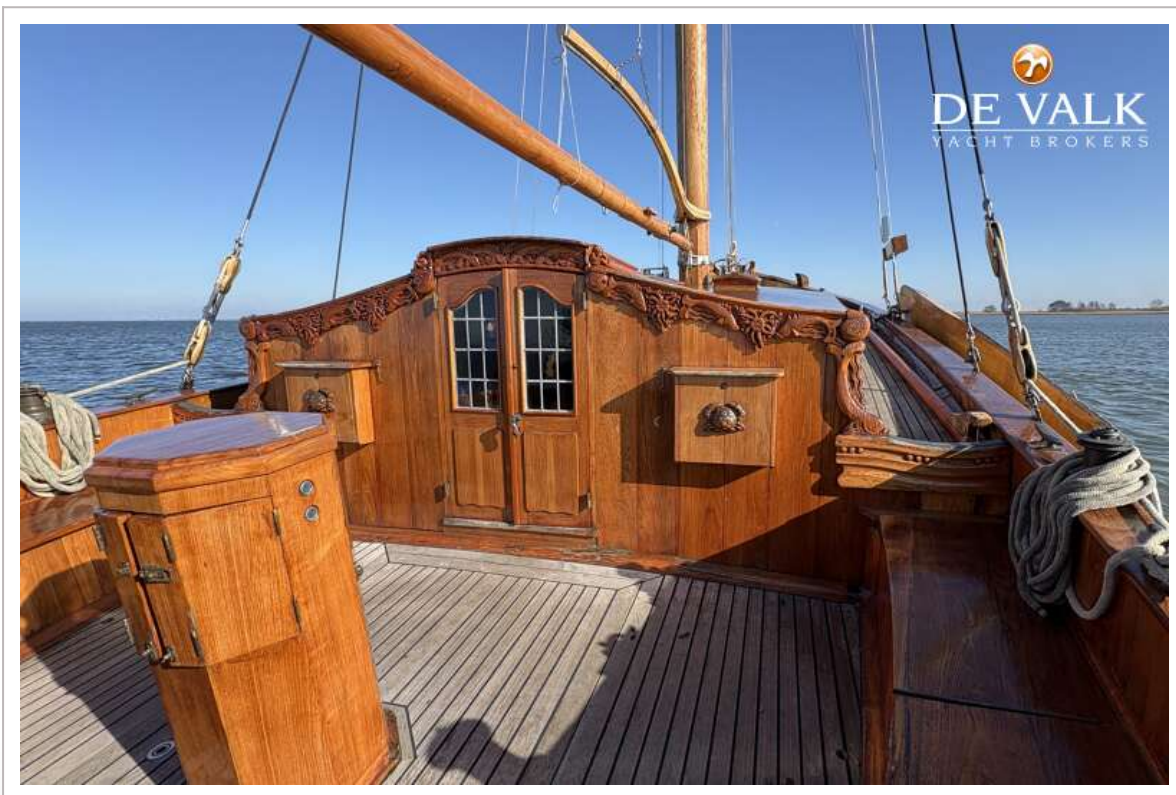
Rigging	gaff-rig
Standing rigging	wire
Material mast	wood
Mainsail	yes
Mainsail cover	yes
Cutterstay	yes
Jib	yes
Reefing System	slabreefing
Primary sheet winch	yes
Halyard winches	Manual hydraulic
Multifunctional winches	Electric for daggerboards



# BOTTER JACHT



# BOTTER JACHT



# BOTTER JACHT

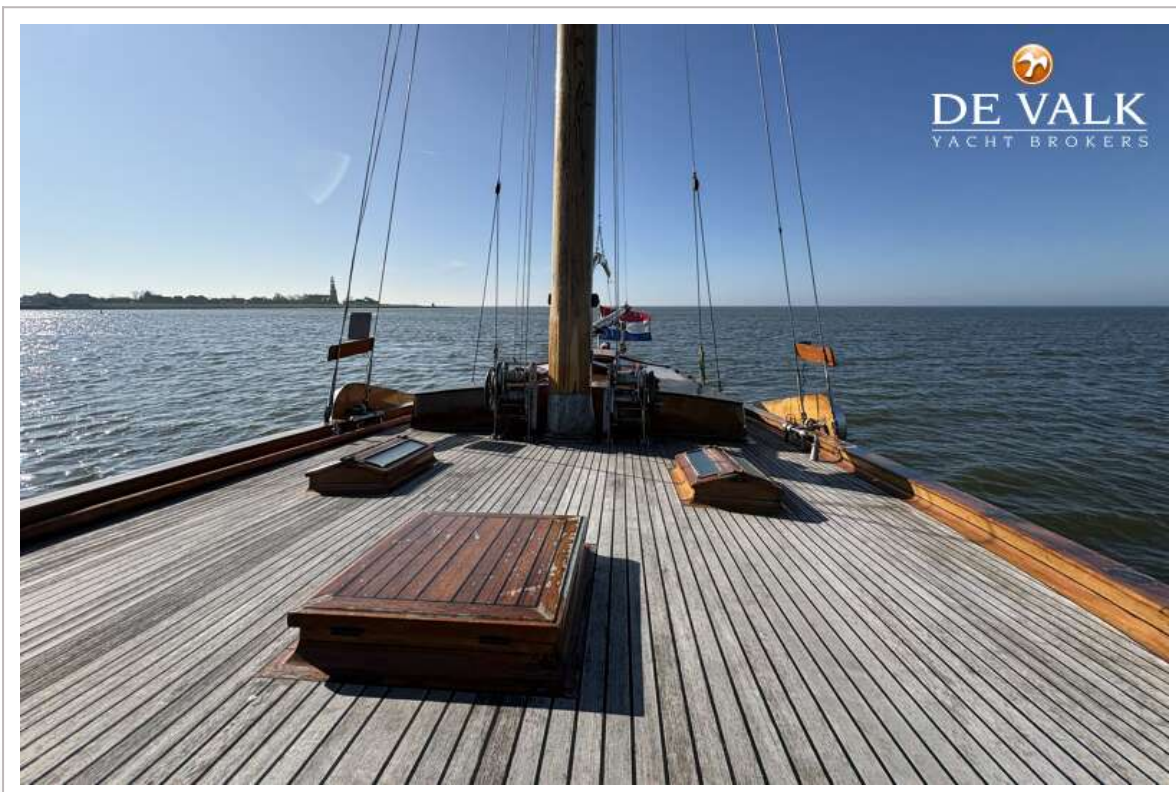


# BOTTER JACHT

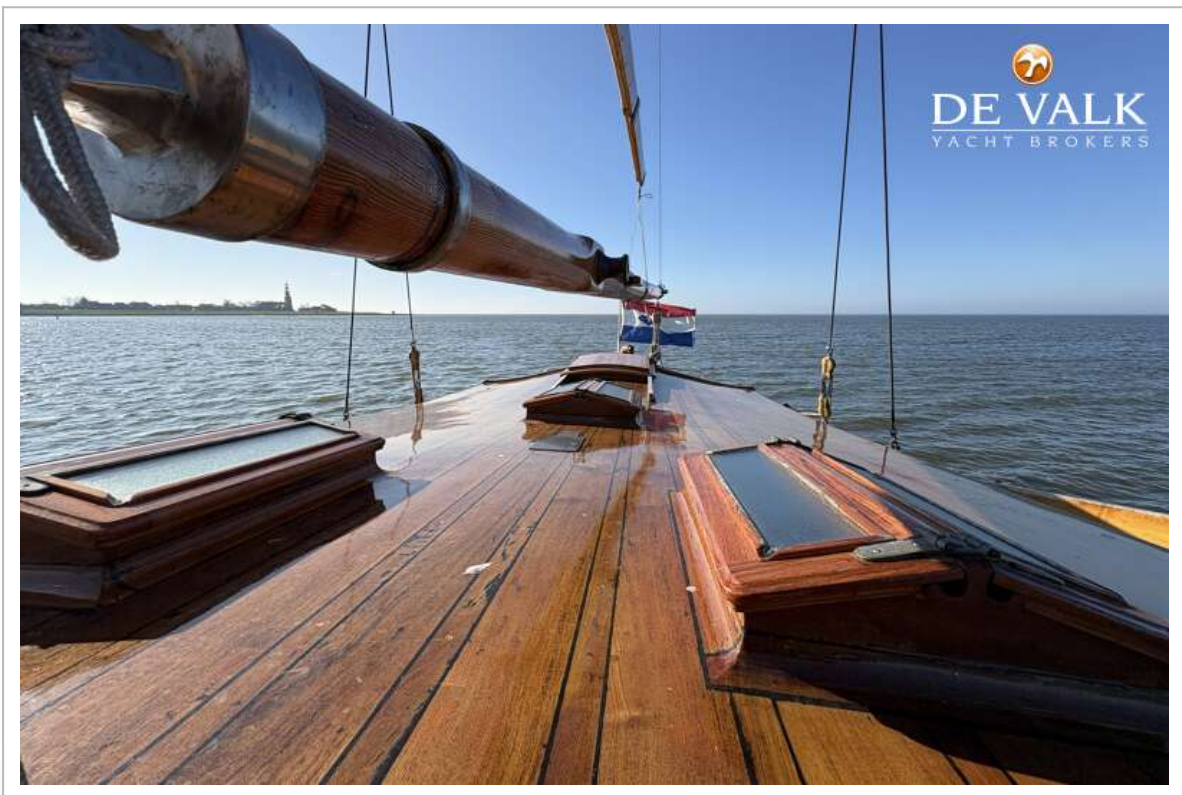


# BOTTER JACHT

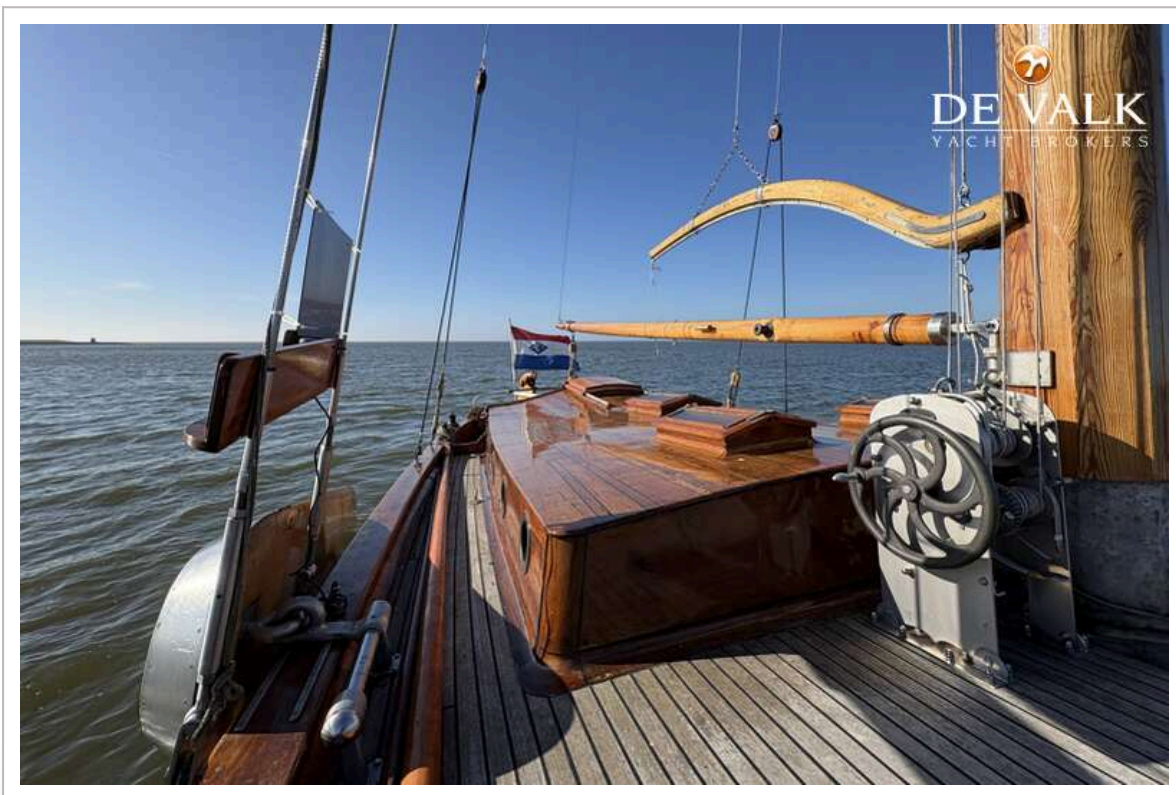




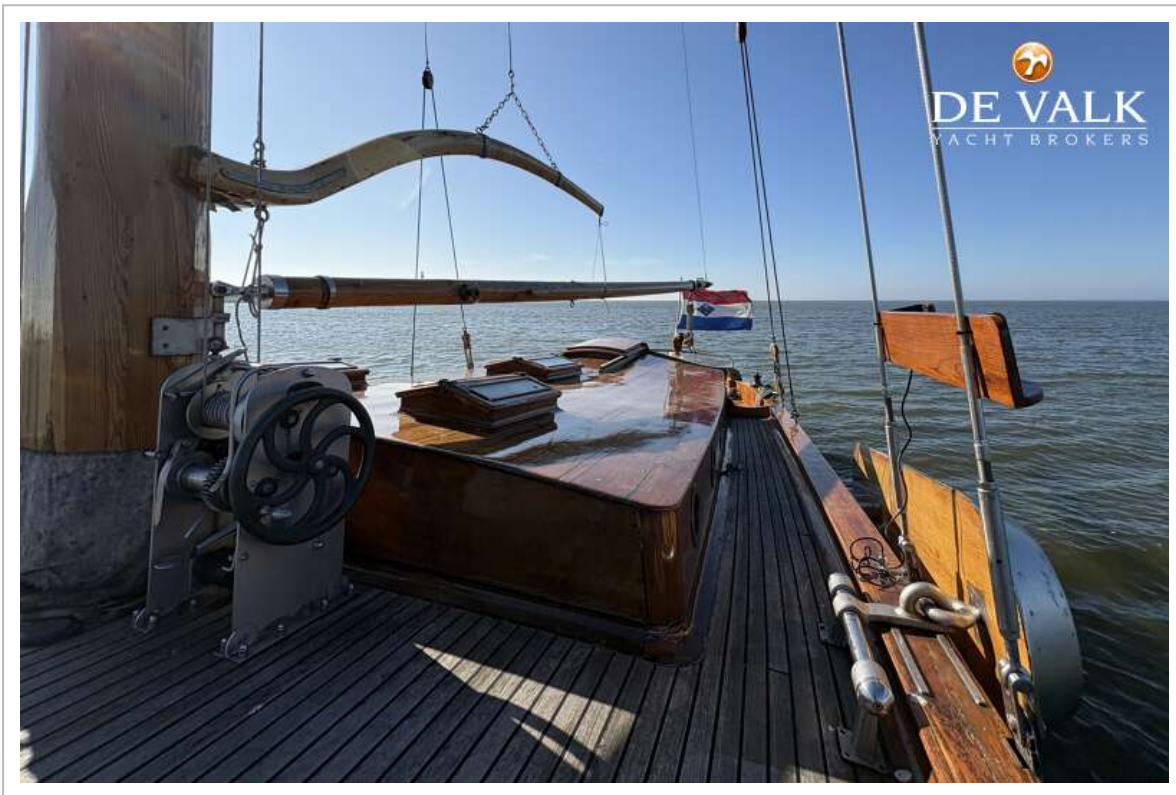
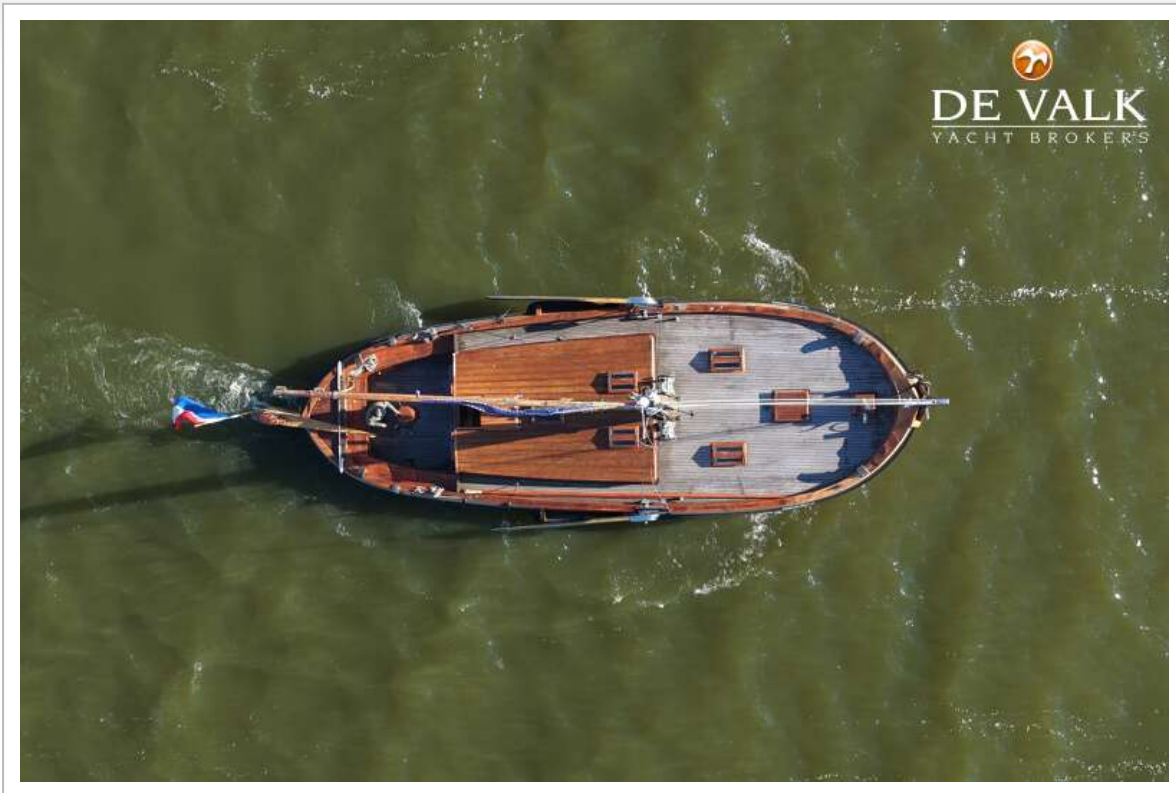
# BOTTER JACHT



# BOTTER JACHT



# BOTTER JACHT



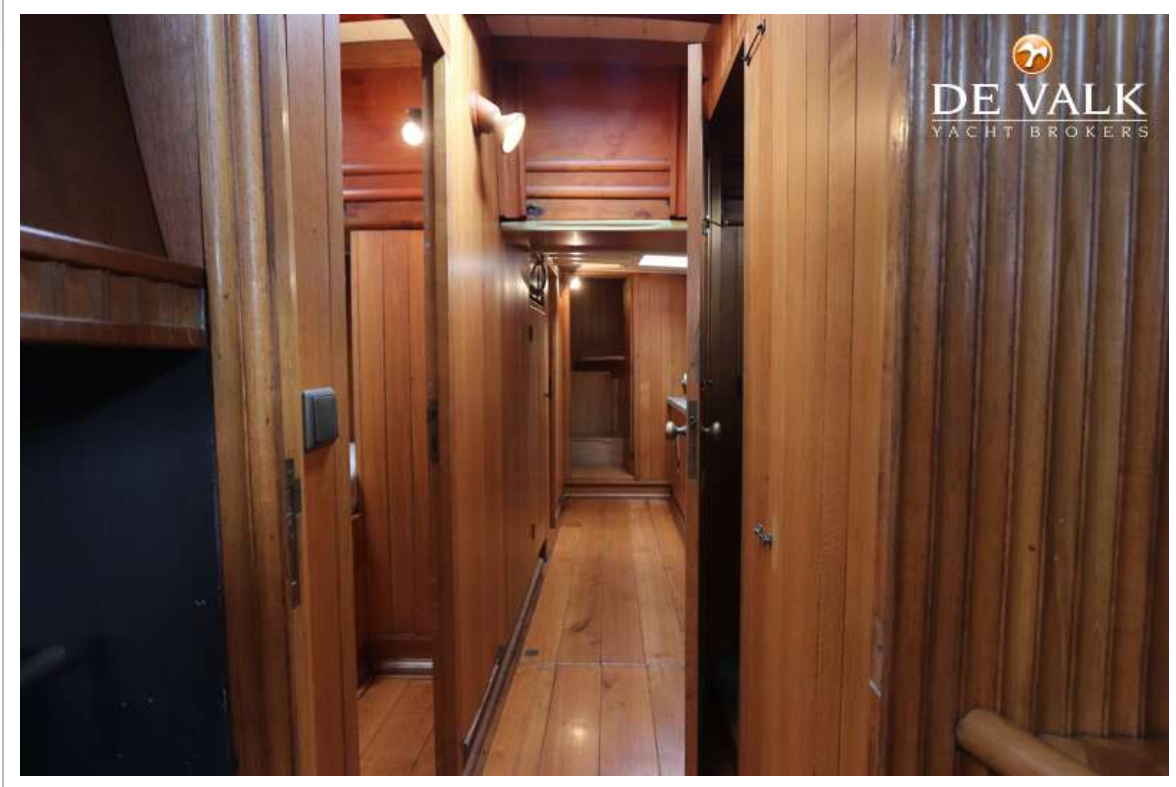
# BOTTER JACHT



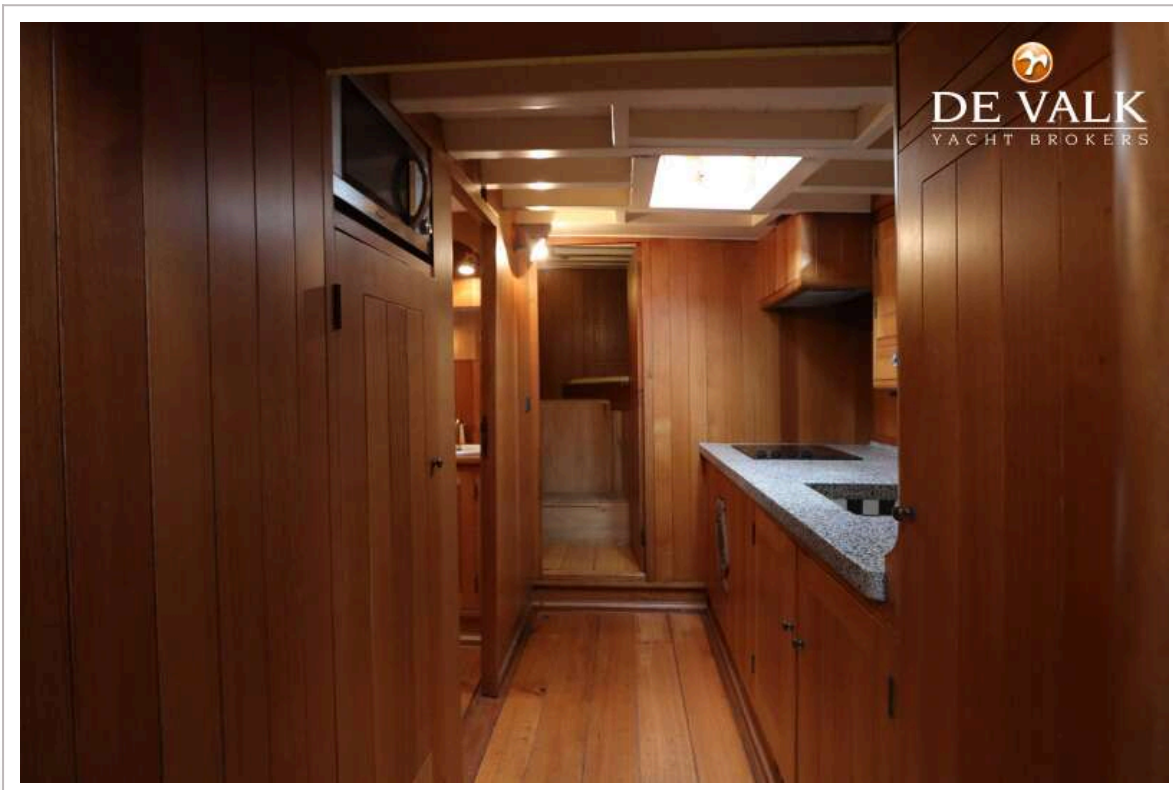
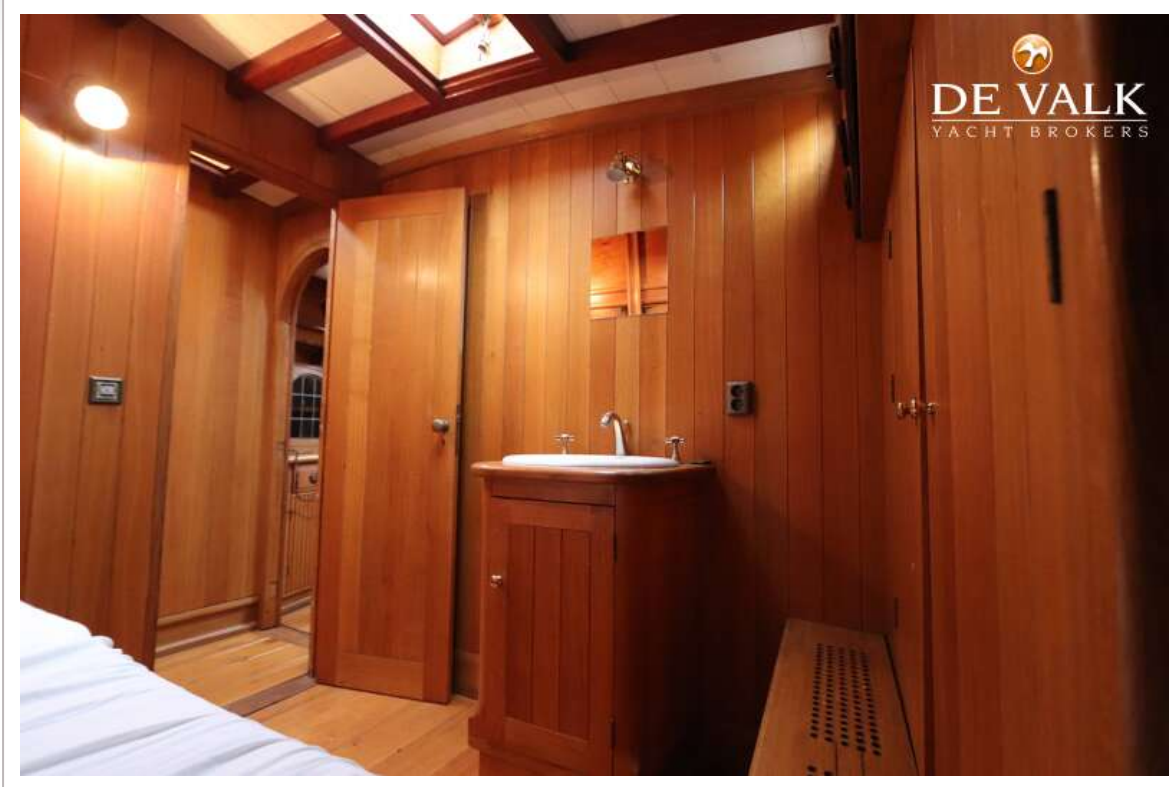
# BOTTER JACHT



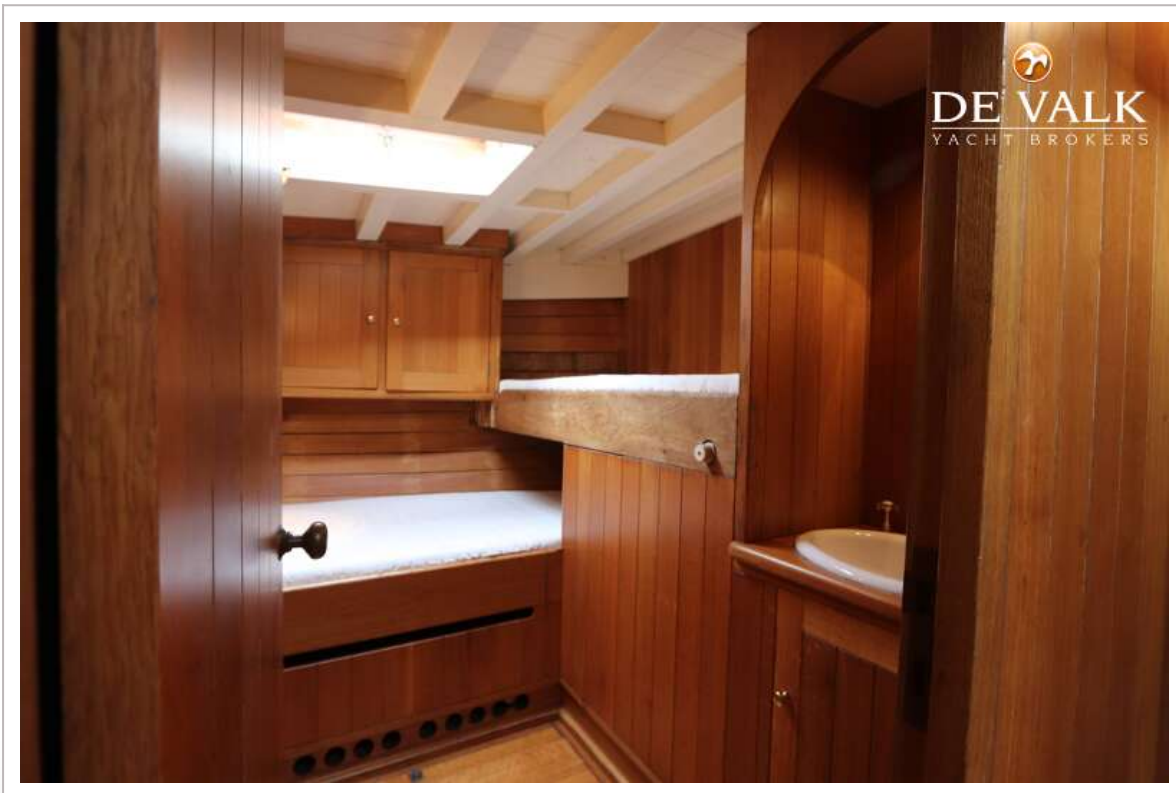
# BOTTER JACHT



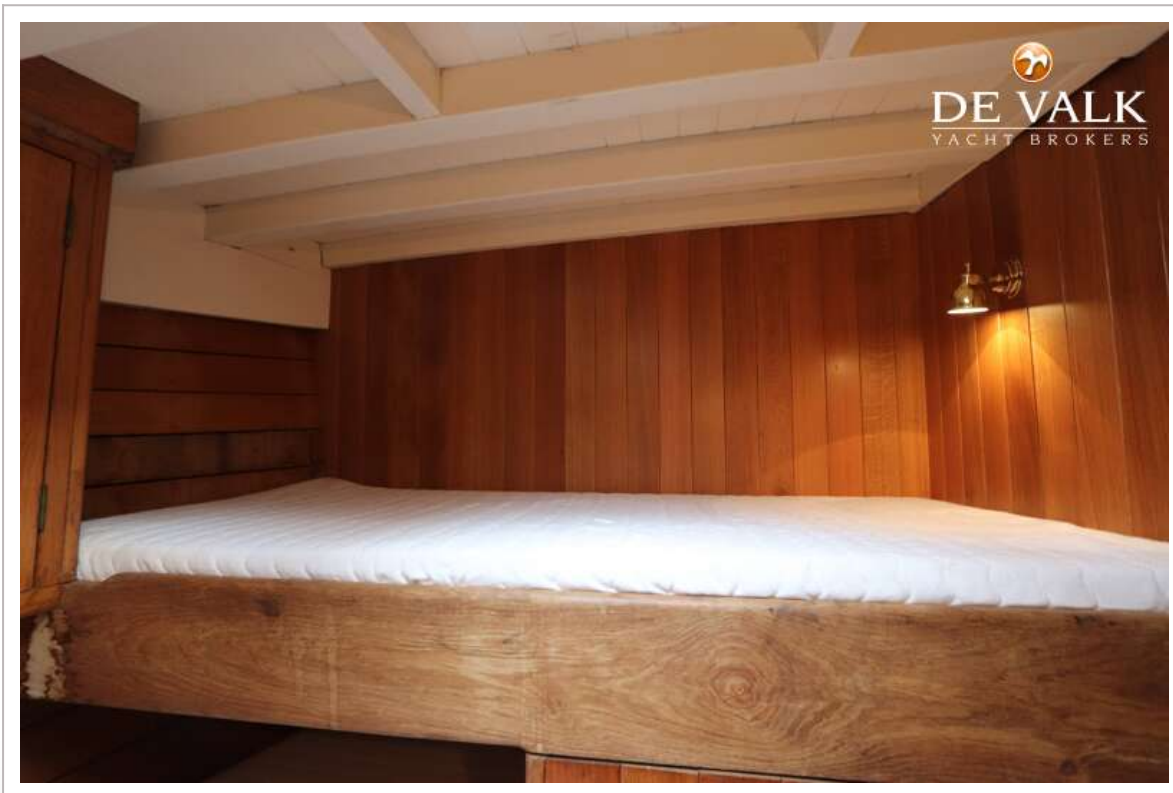
# BOTTER JACHT



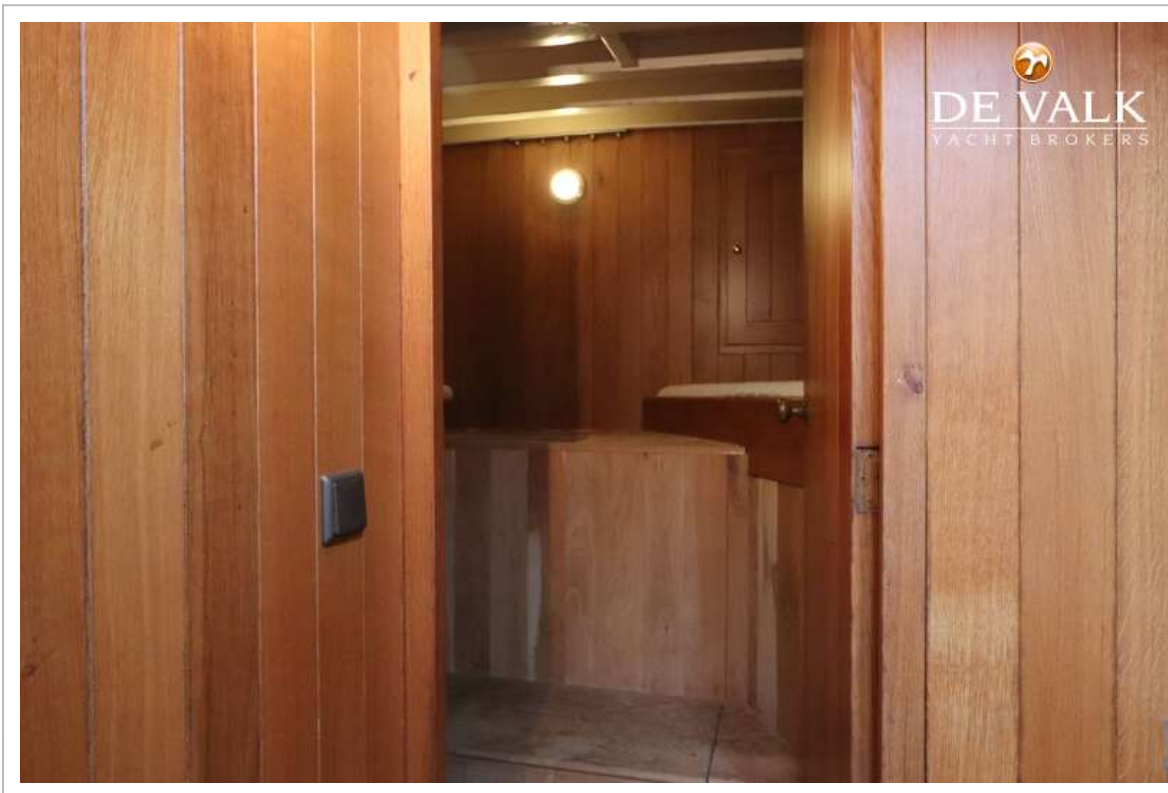
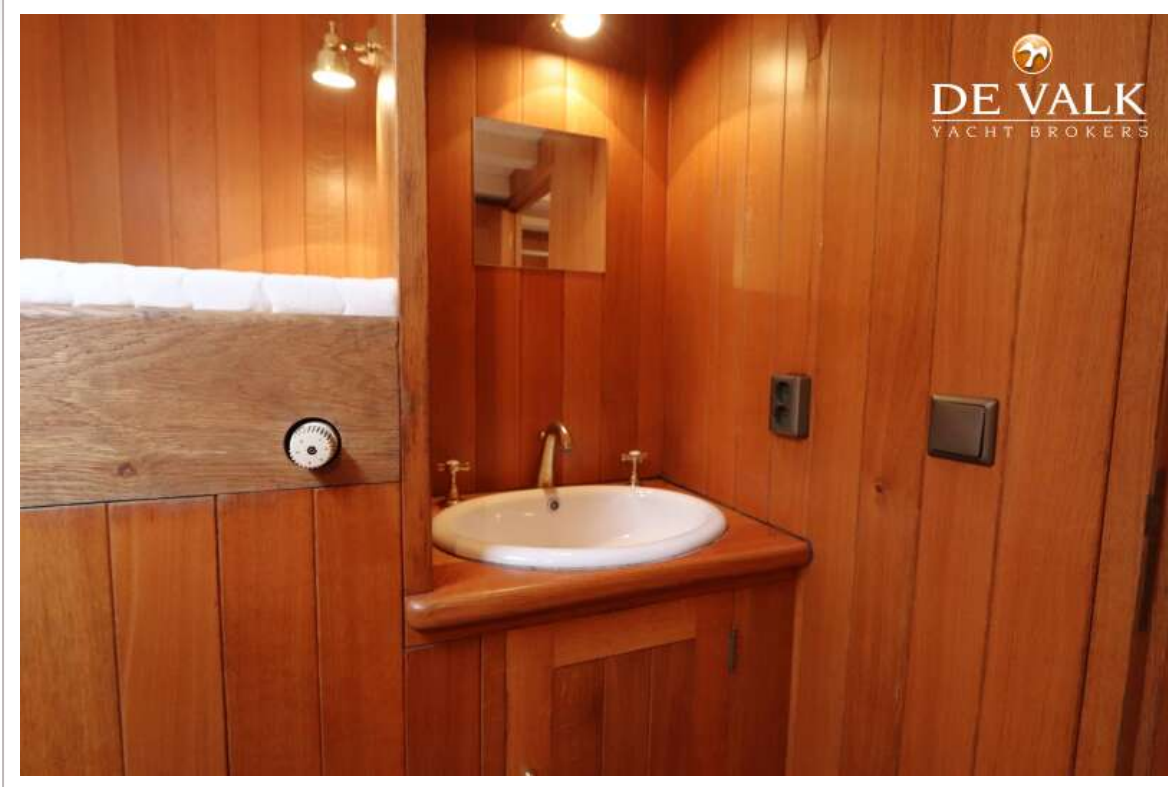
# BOTTER JACHT



# BOTTER JACHT



# BOTTER JACHT



# BOTTER JACHT



# BOTTER JACHT



# BOTTER JACHT

