



DE VALK
YACHT BROKERS



BAVARIA 38 OCEAN



DE VALK
YACHT BROKERS

BAVARIA 38 OCEAN

BROKER'S COMMENTS

The Bavaria 38 Ocean probably will appeal to families looking for a comfortable and strong cruising boat with far better than average accommodations. It has a superb layout with a large master cabin aft and the heads compartment accessible from the salon. Structurally this Bavaria complies with Germanischer Lloyds requirements. There is even a Kevlar layer in the bow area to add to the impact resistance of the hull shell forward. All lines led aft to the dry, comfortable, center cockpit as well as having in-mast furling on the main sail and a furling genoa.

Reinier van der Wolf

SPECIFICATIONS

Dimensions	11.75 x 3.95 x 1.90 (m)	Builder	Bavaria Yachtbau GbmH, Giebelstadt
Built	1998	Cabins	2
Material	GRP	Berths	5
Engine(s)	1 x Volvo Penta MD22L diesel	Hp/Kw	50.00 (hp), 36.75 (kw)
Asking price	sold (VAT)	Lying	at sales office

CONTACT

Sales office	De Valk Monnickendam	Telephone	+31 299 65 63 50
Address	Hoogedijk 6 1145 PM Katwoude The Netherlands	E-mail	monnickendam@devalk.nl

DISCLAIMER

These particulars are given in good faith as supplied but cannot be guaranteed.



BAVARIA 38 OCEAN

GENERAL

Model	BAVARIA 38 OCEAN
Type	sailing yacht
LOA (m)	11,75
LWL (m)	9,85
Beam (m)	3,95
Draft (m)	1,90
Air draft (m)	17,50
Headroom (m)	1,95
Year built	1998
Builder	Bavaria Yachtbau GbmH, Giebelstadt
Country	Germany
Designer	J&J Design
Displacement (t)	7,5
Ballast (tonnes)	2,9
CE norm	A
Hull material	GRP
Hull colour	white
Hull shape	round-bilged
Keel type	fin keel
Superstructure material	GRP
Rubbing strake	wood
Deck material	GRP
Deck finish	non-skid moulded in
Superstructure deck finish	non-skid moulded in
Cockpit deck finish	teak
Antifouling (year)	2021
Dorades	2x
Window frame	aluminium Gebo
Window material	polycarbonate
Deckhatch	4x Gebo



Fuel tank (litre)	polyethylene 160
Level indicator (fuel tank)	Bavaria Yachts display
Freshwater tank (litre)	polyethylene 2 x 210
Blackwater tank (litre)	Yes
Blackwater tank extraction	deck extraction + pump
Wheel steering	cable steering
Emergency tiller	yes
More info on hull	complete osmoses treatment hull below the waterline + rudder blade by Peter Wrede Yacht Refits Hamburg (2021)

ACCOMMODATION

Cabins	2
Berths	5
Interior	mahogany
Floor	teak and holly
Open cockpit	yes
Saloon	yes
Headroom saloon (m)	1,95
Heating	diesel ducted hot air Webasto
Chart table	yes
Aft Cabin	yes
Galley	yes
Countertop	plastic
Sink	2 x
Cooker	calor gas
Oven	yes
Gas alarm	yes
Fridge	yes
Hot water system	220V + engine 20l. boiler
Water pressure system	electrical
Owners cabin	French bed



Bed length (m)	2.00 x 1.60
Wardrobe	hanging and shelves
Bathroom	shared
Toilet	shared Jabsco
Toilet system	manual
Wash basin	in the bathroom
Shower	shared
Guest cabin 1	double bed
Bed length (m)	1.95
Extra info	LED interior lights

MACHINERY

No of engines	1
Make	Volvo Penta
Type	MD22L
HP	50
kW	36,75
Fuel	diesel
Year installed	1998
Engine cooling system	freshwater heat exchanger
Drive	sail-drive
Saildrive seal	2016
Engine controls	bowden cable
Gearbox	mechanical
Bowthruster	electric MaxPower
Exhaust	watercooled
Propeller type	folding MaxProp
Propeller blades	3
Electric bilge pump	yes
Electrical installation	12v / 220v
Start battery	1 x 50Ah



Service battery	2 x 140Ah
Shorepower	with cable

NAVIGATION

Compass	Suunto
Depth sounder	Autohelm ST50
Log	Autohelm ST50
Windset	Autohelm ST50
VHF	CX-800 + GPS (2021)
Autopilot	Autohelm ST50
Plotter	Simrad G07 XSE touchscreen (2018)
Navigation lights	yes

EQUIPMENT

Fixed windscreen	yes
Sprayhood	yes
Cockpit cover	yes
Bimini	yes
Bathing platform	yes
Boarding ladder	stainless steel
Deck shower	yes
Anchor	yes
Anchor chain	yes
Anchor 2	yes
Windlass	electrical Simpson lawrence
Sea railing	wire
Railing side opening gates	yes
Pushpit	yes
Pulpit	yes
Life raft	Offshore
Life raft (pers)	4



Safety lines on deck	with patent hook 2 x (2021)
Fenders	yes
Mooring lines	yes
Radio	yes

RIGGING

Rigging	sloop
Standing rigging	wire
Brand mast	Seldén
Material mast	aluminium
Spreaders	2 x
Mainsail	Dacron
Stoway mast	yes
Genoa	yes
Genoa furler	Furlex 300S
Booster	yes
Reefing System	main in-mast furling
Backstay adjuster	mechanical
Boomvang	gasspring Selden
Primary sheet winch	2 x Harken 40 two speed
Secondary sheet winch	2 x Harken 44 two speed
Halyard winches	1 x Antal 40
Spi-pole	aluminium
Extra info	Dyneema + GRP sheets (2021)

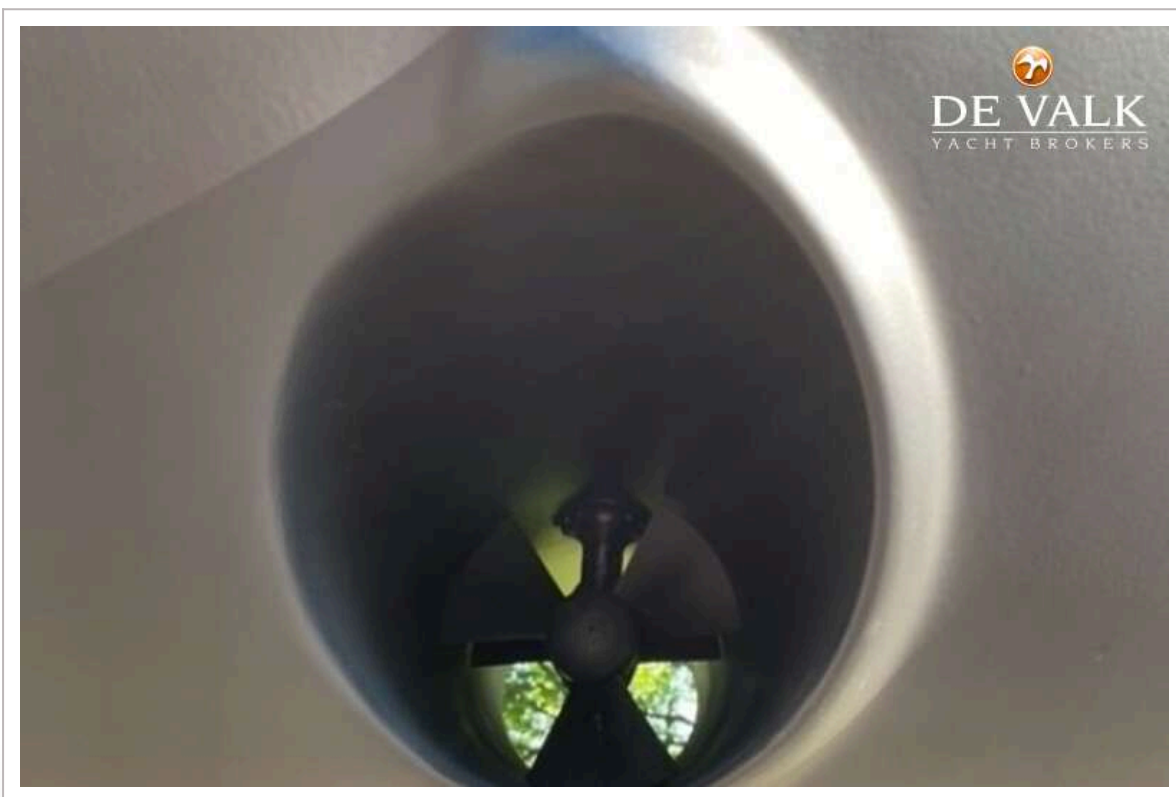
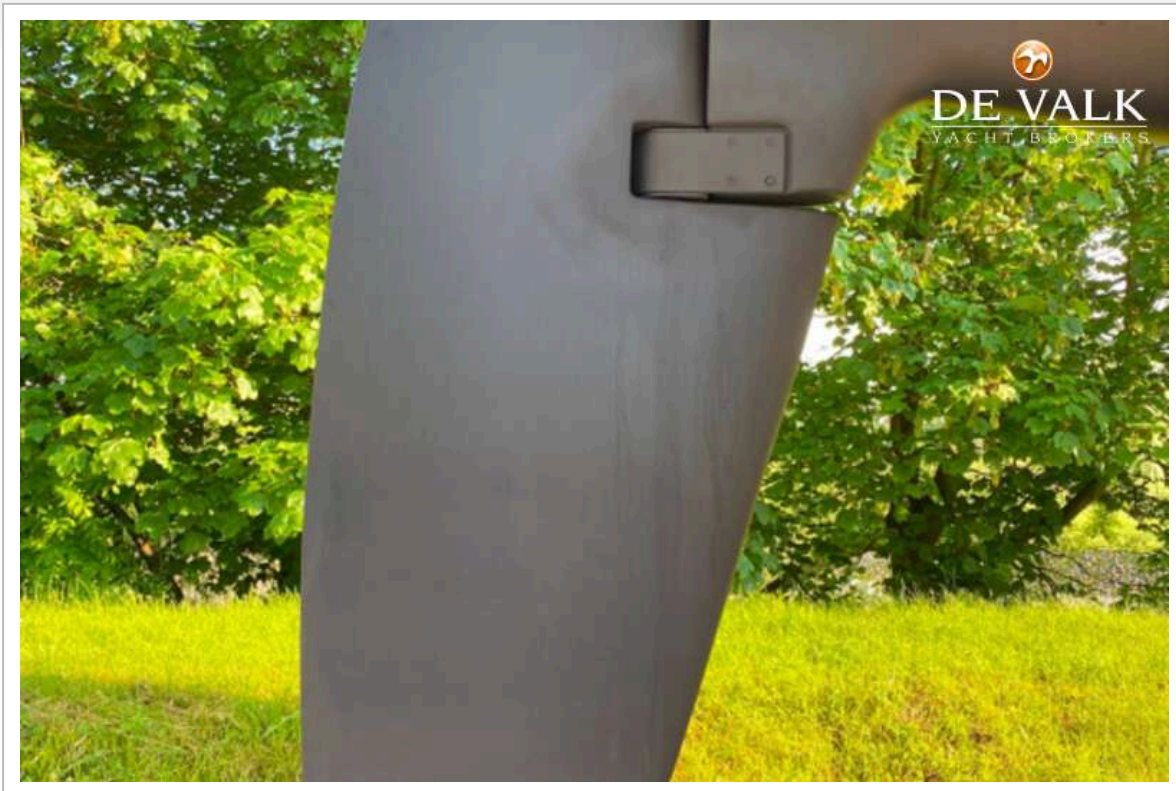


BAVARIA 38 OCEAN

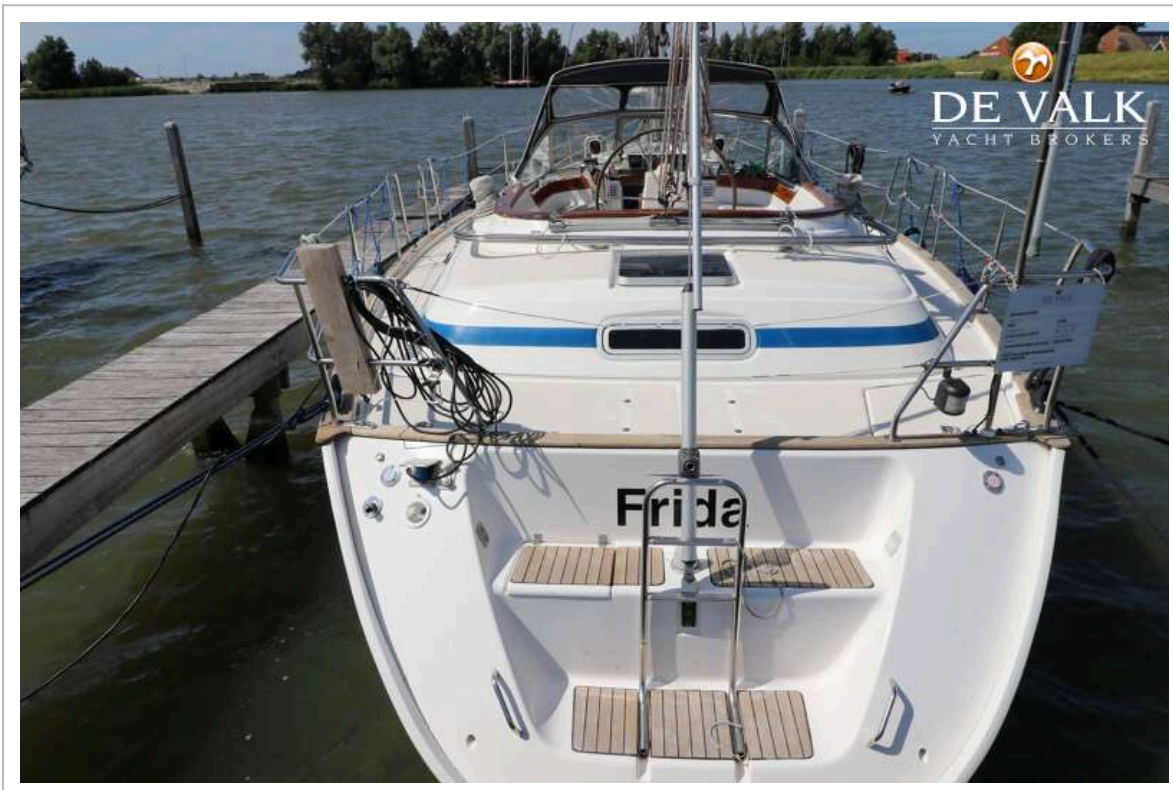


BAVARIA 38 OCEAN

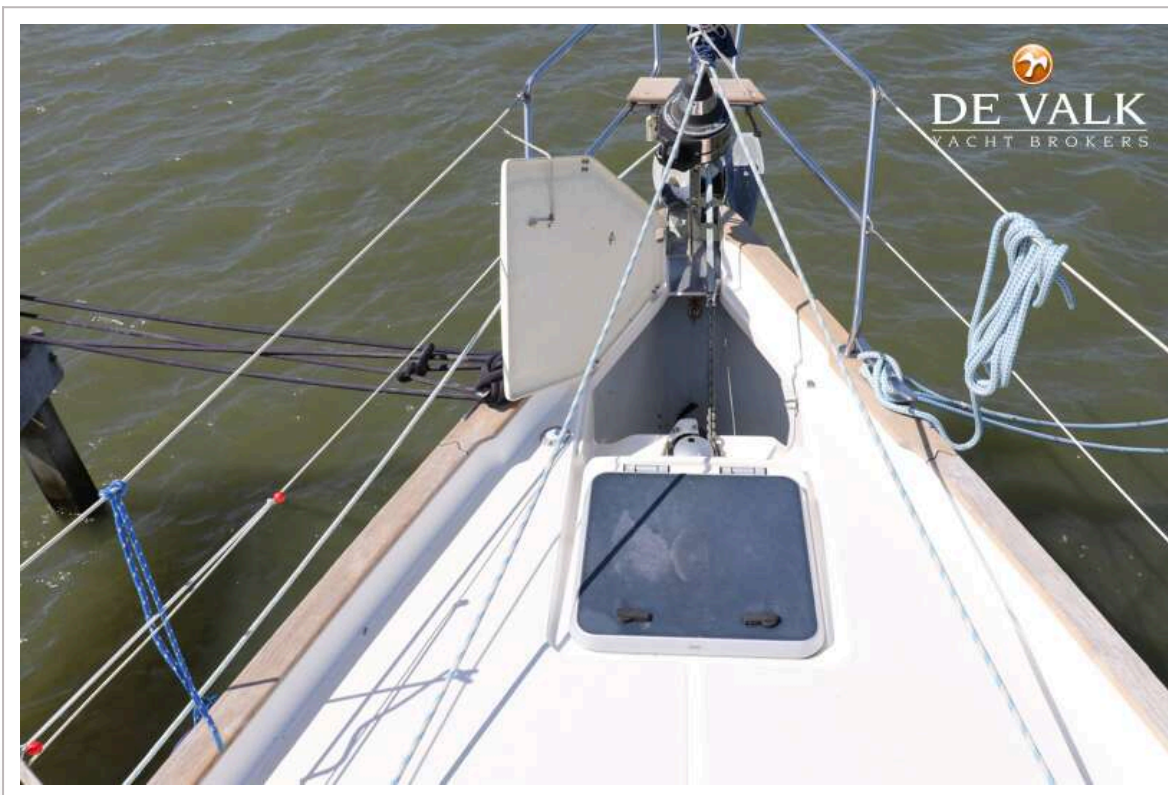




BAVARIA 38 OCEAN



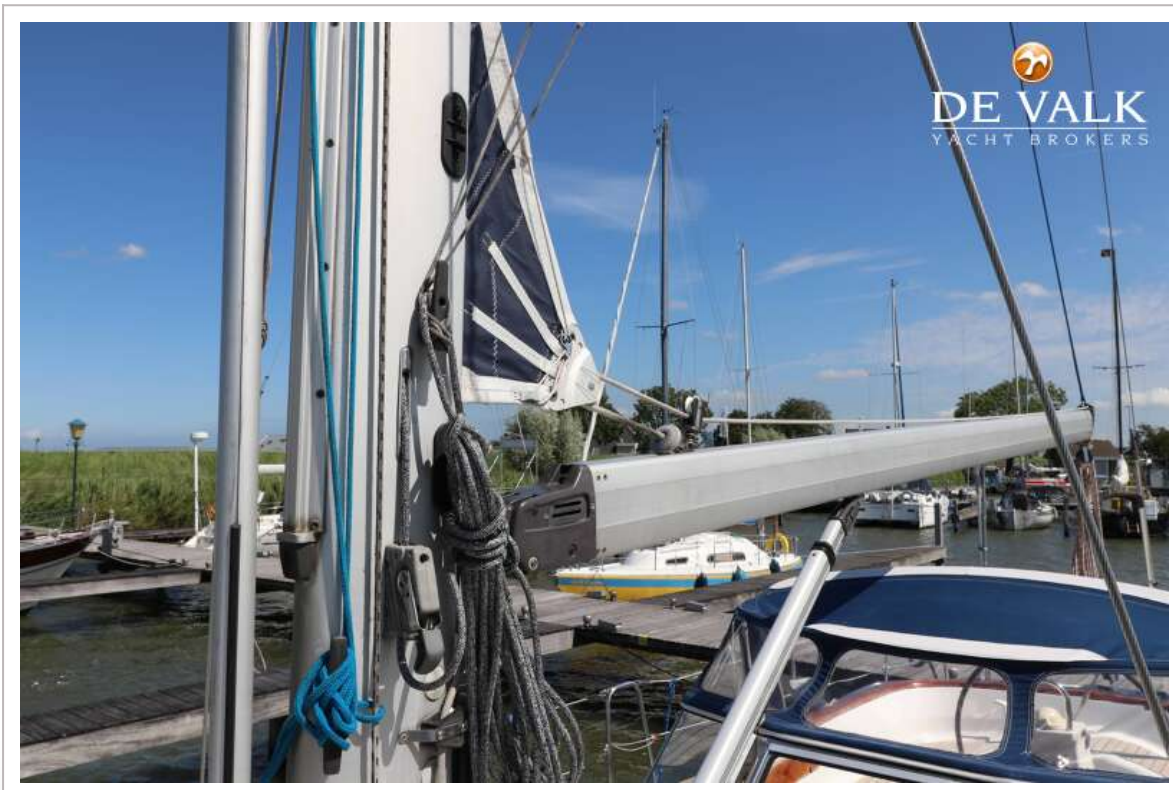
BAVARIA 38 OCEAN



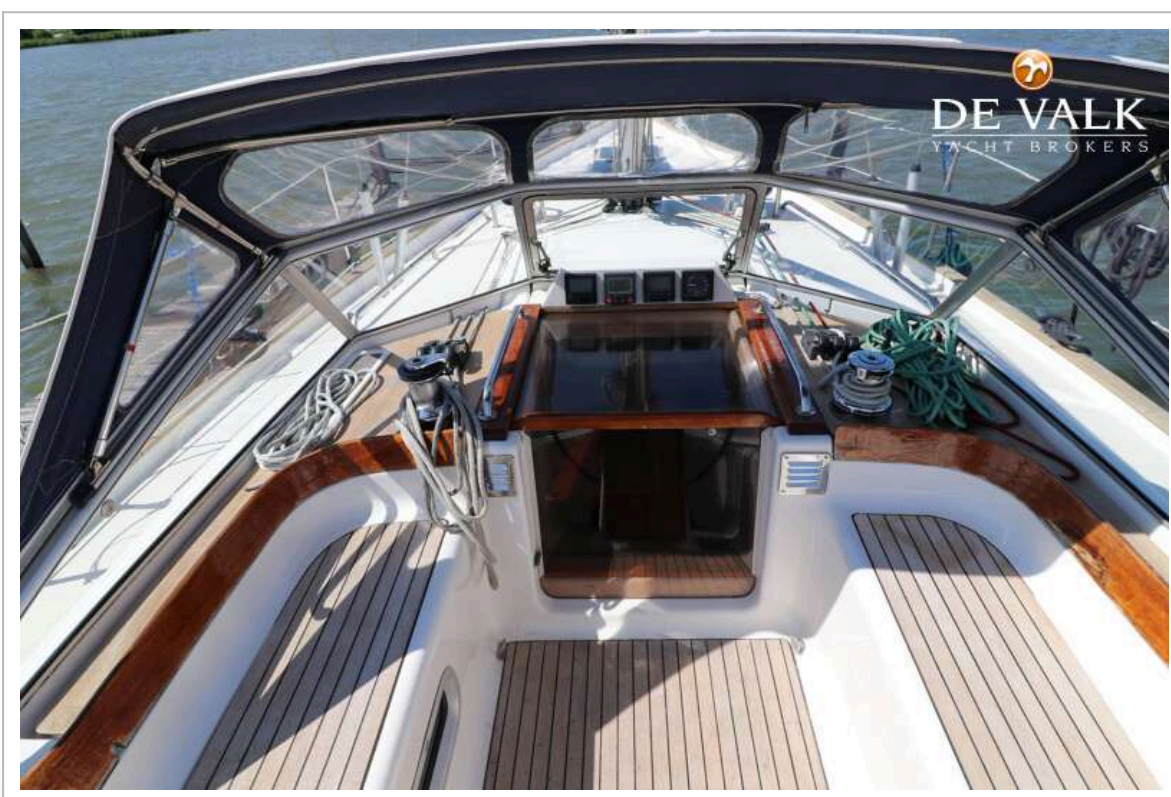
BAVARIA 38 OCEAN



BAVARIA 38 OCEAN



BAVARIA 38 OCEAN



BAVARIA 38 OCEAN



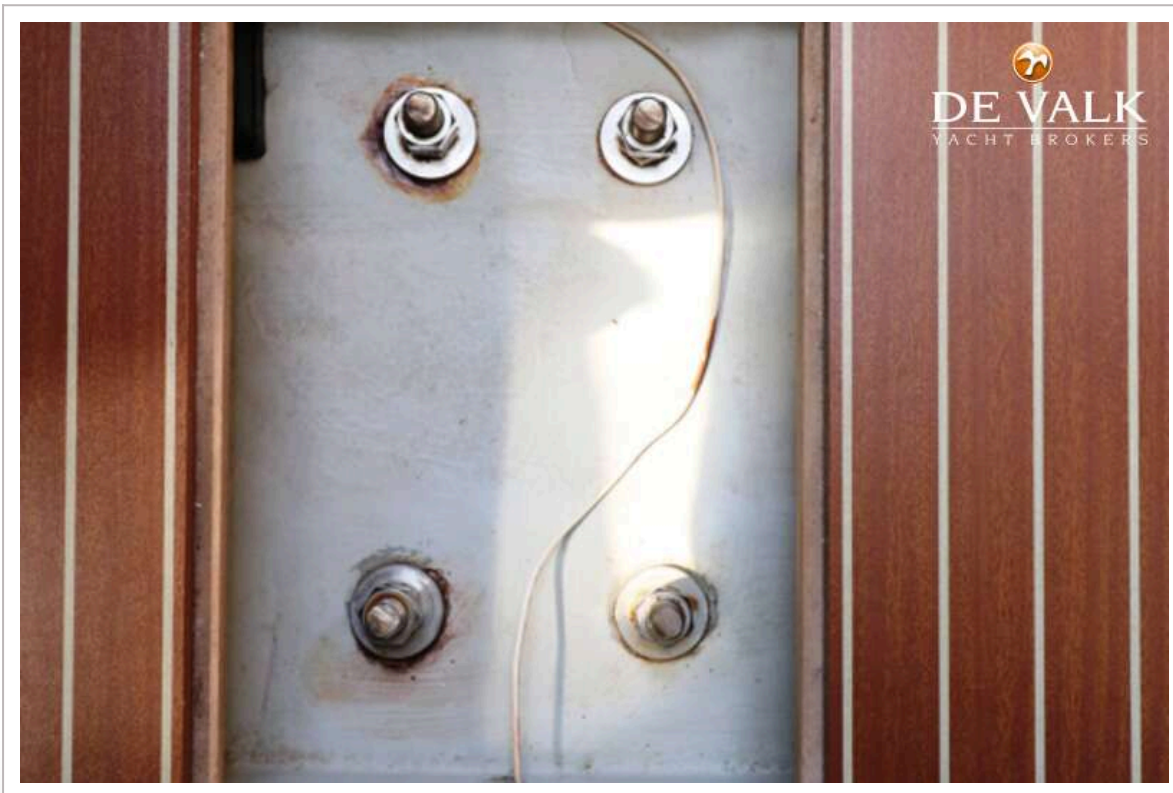
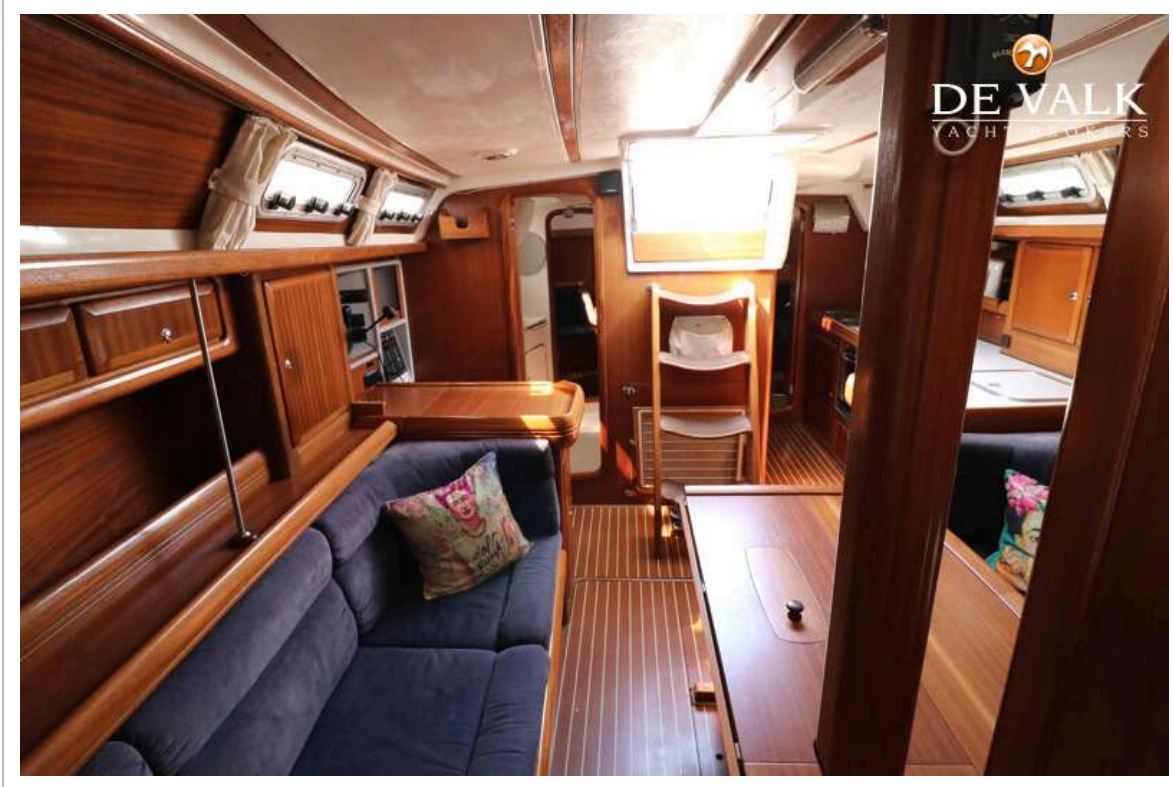
BAVARIA 38 OCEAN



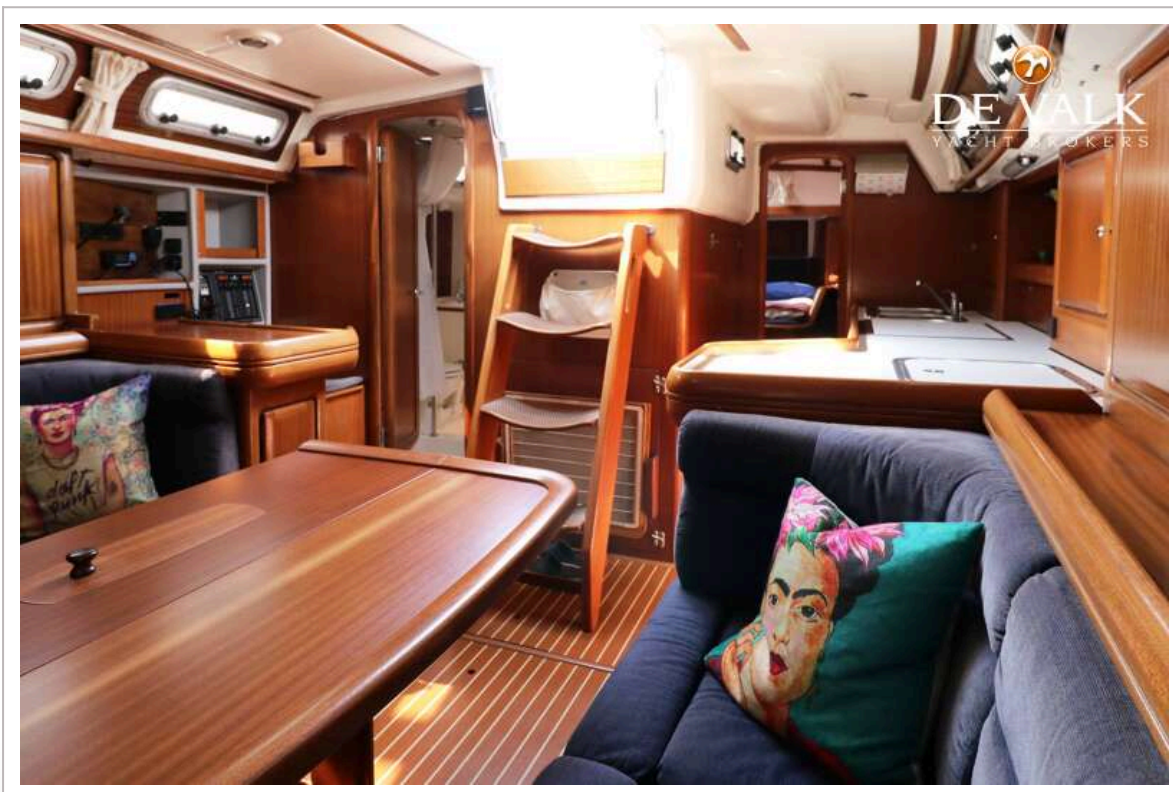
BAVARIA 38 OCEAN



BAVARIA 38 OCEAN



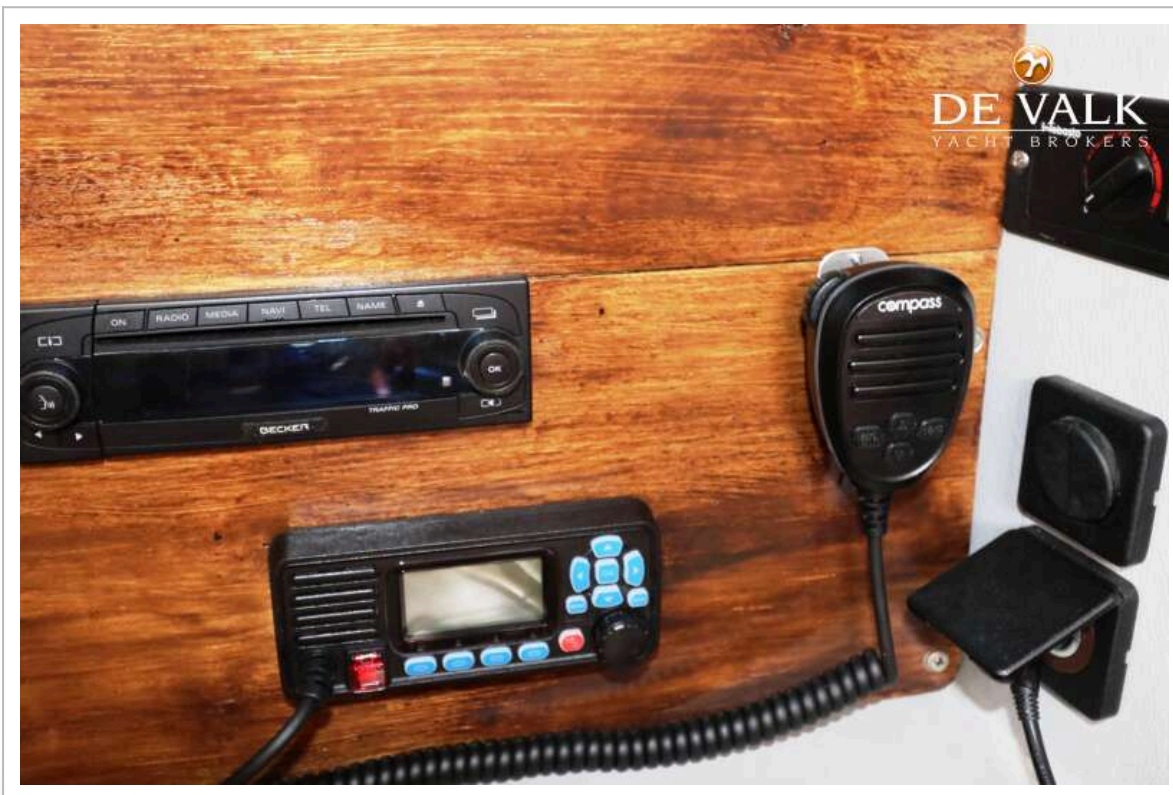
BAVARIA 38 OCEAN



BAVARIA 38 OCEAN



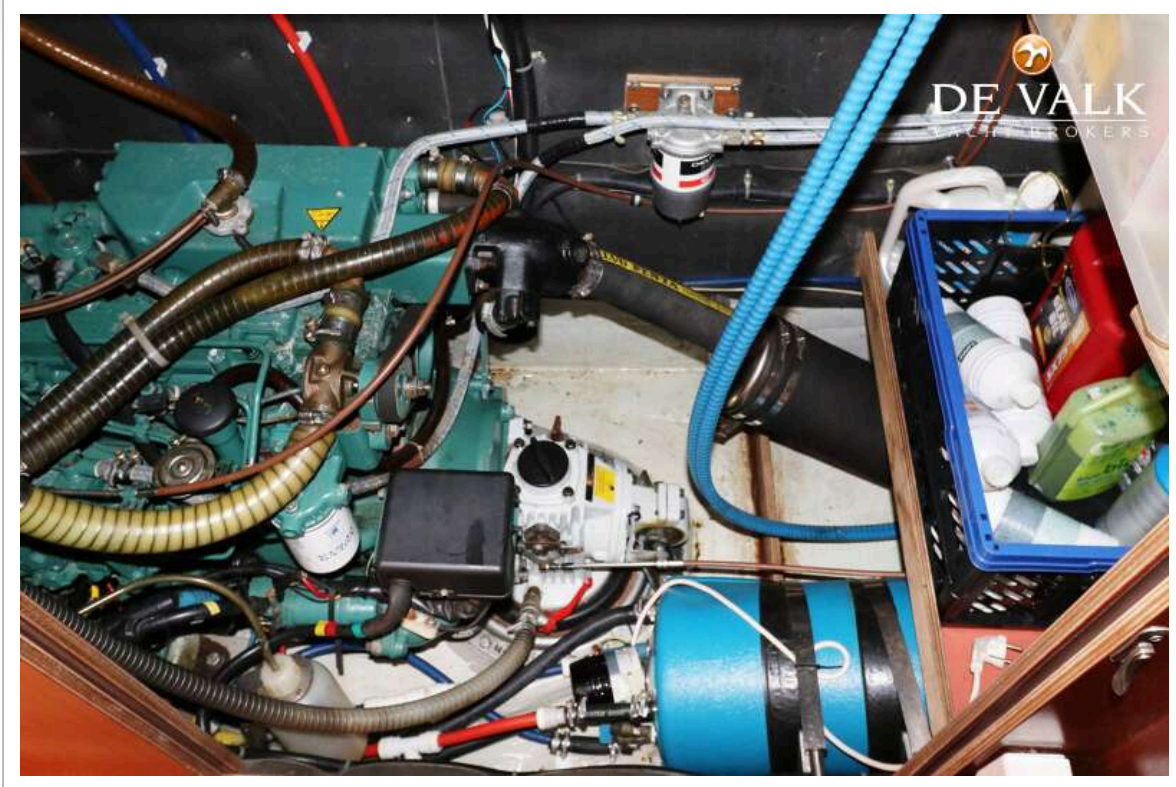
BAVARIA 38 OCEAN



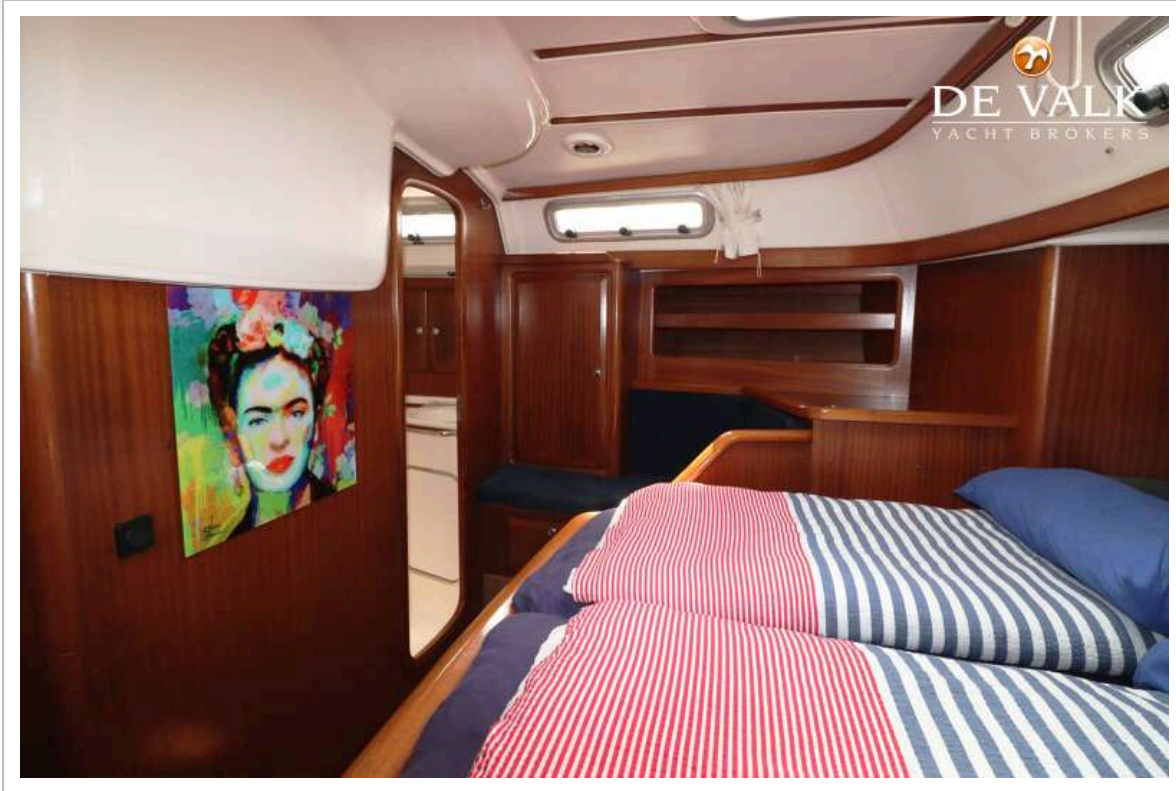
BAVARIA 38 OCEAN



BAVARIA 38 OCEAN



BAVARIA 38 OCEAN



BAVARIA 38 OCEAN

