



DE VALK
YACHT BROKERS



PALMER JOHNSON 70



DE VALK
YACHT BROKERS

BROKERAGE | CHARTER | BERTHS | FINANCE | INSURANCE | YACHT MANAGEMENT

BROKER'S COMMENTS

This special Palmer Johnson aluminum hull sailing yacht designed by Sparkman & Stephens combines classical design with modern accommodation. The yacht's classical and pure lines, incorporated in a very solid and strong construction represent tradition and innovation. You will find a well maintained yacht above and below deck. A large a very spacious salon below deck, leading to 3 cabins aft, and 1 cabin forward. The galley is incorporated in the salon. Sails and rigging have been maintained, the engines have been revised, and the topsides have been painted in 2021. A true jewel - a must see!

Tue Simon Fasting

SPECIFICATIONS

Dimensions	21.21 x 5.45 x 3,10 / 3.15 (m)	Builder	Sparkman Stephens
Built	1984	Cabins	4
Material	Aluminium	Berths	8
Engine(s)	1 x Volvo Penta TAMD70E diesel	Hp/Kw	325.00 (hp), 238.88 (kw)
Asking price	sold (VAT)	Lying	at sales office

CONTACT

Sales office	De Valk Barcelona	Telephone	+34 932 202 825
Address	Barcelona region 08392 Barcelona ES	E-mail	barcelona@devalk.nl

DISCLAIMER

These particulars are given in good faith as supplied but cannot be guaranteed.



GENERAL

Model	PALMER JOHNSON 70
Type	sailing yacht
LOA (m)	21,21
LWL (m)	16,46
Beam (m)	5,45
Draft (m)	3,15
Draft min (m)	3,10
Year built	1984
Builder	Sparkman Stephens
Displacement (t)	42
Net tonnage	42
CE norm	NA
Hull material	aluminium
Hull thickness (mm)	8,5mm
Hull shape	Fast Displacement Hull Fin spade with rudder
Superstructure material	Aluminium covered with teak
Deck material	teak 2009
Superstructure deck finish	teak Varnished
Cockpit deck finish	Teak
Window frame	aluminium
Window material	polycarbonate
Insulation	foam
Radar arch	non collapsible
Fuel tank (litre)	1 tank - 2880 liters
Freshwater tank (litre)	3 tanks - 2842 liters
Blackwater tank (litre)	2 tanks - 379 liters
Blackwater tank extraction	pump
Greywater tank (litre)	2 tanks - 568 liters
Wheel steering	cable steering
Emergency tiller	Yes



More info on hull

Top side painted 2021

ACCOMMODATION

Cabins	4
Berths	8
Crew berths	2
Floor	Mahogany
Open cockpit	Yes
Aft deck	Yes
Saloon	Large
Headroom saloon (m)	2,10
Air-conditioning	reverse cycle airco 2 X Cruise Air 230V 24000 BTU
Chart table	Yes
Aft Cabin	Master
Dinette	Yes
Galley	Yes
Sink	stainless steel 2 sinks
Cooker	4 plates power 2 plates gas burner
Oven	Yes
Extractor	Yes
Gas alarm	Solenoid
Fridge	2 units
Freezer	2 units
Hot water system	220V + engine
Water pressure system	electrical
Dishwasher	Fisher Paykel
Hot water tap	Yes
Owners cabin	double bed Bed 2,1 x 2,5 meter (not square)
Wardrobe	hanging/drawers/shelves
Bathroom	en suite
Toilet	en suite



Toilet system	electric
Shower	en suite
Guest cabin 1	double bed Bed 2,1
Wardrobe	hanging/drawers/shelves
Bathroom	shared
Toilet	shared
Guest cabin 2	twin single Bed 2,1
Bathroom	shared
Toilet	shared
Guest cabin 3	double bed
Wardrobe	hanging/drawers/shelves
Bathroom	en suite
Toilet	en suite
Washing machine	Yes

MACHINERY

No of engines	1
Make	Volvo Penta
Type	TAMD70E
HP	325
kW	238,88
Fuel	diesel
Year installed	1984
Consumption (l/hr)	13
Range (nm)	1900
Engine cooling system	seawater
Drive	shaft
Engine controls	bowden cable
Gearbox	Twin Disc MG5074 3:1
Propeller type	Hundested VP 36``, variable pitch
Electrical installation	New installation 2010



Generator	Nothern Lights M844L 1800 RPM 4 cylinder
Start battery	100 amp hours 12 volt
Service battery	700 amp hours 24 volt
Generator battery	100 amp hours 12 volt
Battery monitor	Victron
Battery charger	Victron
Inverter	Victron
Battery charger/inverter	Victron
Watermaker	Spectra 2010, brand new membrane

NAVIGATION

Compass	Simrad
Compass on flybridge	Magnetic in cockpit
Electric compass	Yes
Depth sounder	Simrad
VHF	Yes
VHF handheld	Yes
Autopilot	Simrad
Radar	Simrad
GPS	Simrad
Plotter	Simrad
AIS receiver	Yes
Radio receiver	Yes
Transmitter	Yes
EPIRB	Yes
Camera	Underwater

EQUIPMENT

Storm blinds	Aluminium
Sprayhood with grab rail	Yes
Cockpit cushions	Yes



Cockpit table	Yes
Cockpit chairs	Yes
Boarding ladder	stainless steel Teak steps
Gangway	Teak
Deck shower	Yes
Anchor	CQR 105 LB
Anchor chain	100 meters
Anchor 2	2 spare anchors, One aluminium app 80 LB and one steel app. 100
Anchor chain	50 meters
Windlass	electrical Anchor winch
Dinghy	rigid inflatable 3,2
Outboard	30hp Evinrude
Davits	Yes
Sea railing	stainless steel
Grab rail (superstructure)	teak
Railing side opening gates	2 gates
Life raft	Yes
Life raft (pers)	8
Last life raft survey	Need service
Lifejackets	10
Safety harness	1
Danbuoy	1
Fenders	10
Mooring lines	Yes
Spare parts	Plenty
Tools	Some
TV	3 televisions, largest is 50 inches in saloon, 2020. Possible to
DVD player	Playstation
Cockpit speakers	Yes
Clock - barometer	Yes
Extinguisher in engine room	Yes

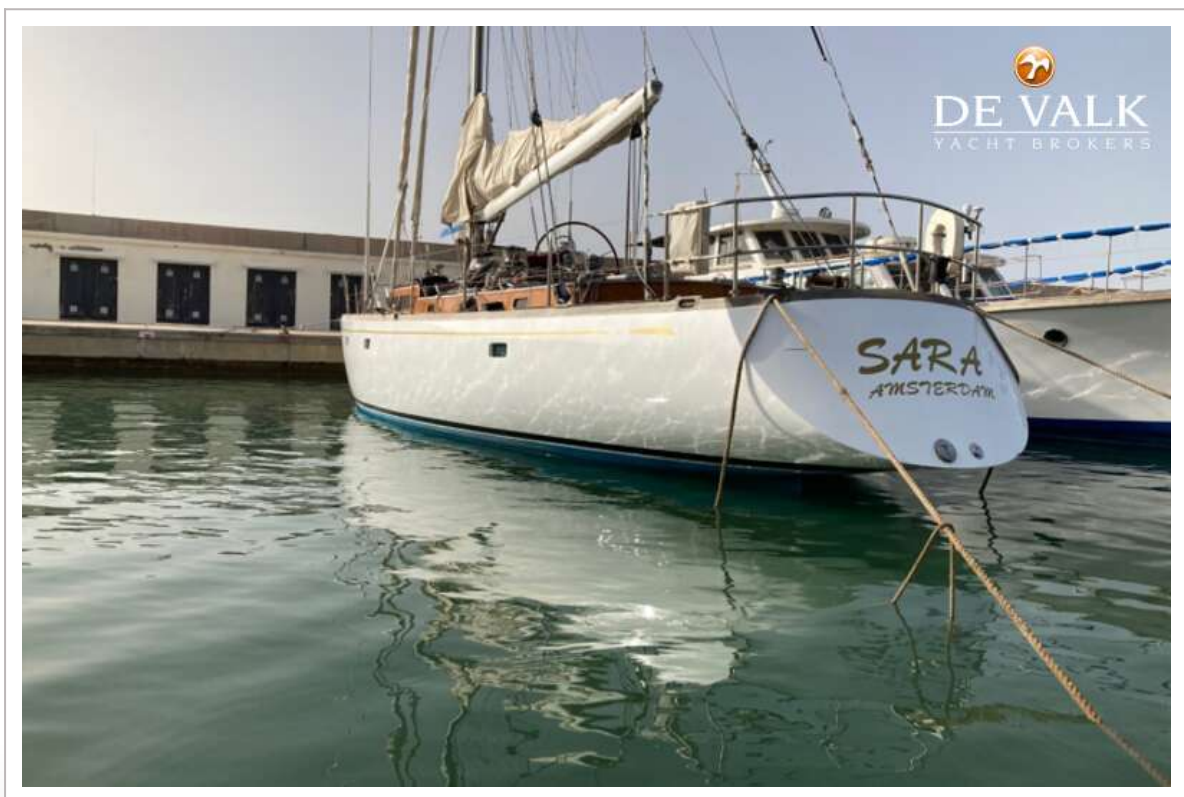


RIGGING

Standing rigging	Rod Need refuishment
Material mast	aluminium coated
Mainsail	Yes
Mainsail cover	Yes
Battcars	Harken back cars
Fully battened mainsail	Yes
Main staysail	Rolly Tasker 2011
Jib	Yes
Genoa	Rolly Tasker 2011
Genoa furler	Harken
A-symetric spi	Yes
Staysail furler	Harken
Reefing System	
Backstay adjuster	hydraulic Navtec
Boomvang	hydraulic Navtec
Primary sheet winch	Electric
Genoa sheetwinches	Electric
Halyard winches	Electric
Spinnaker winch	A total of 11 winches - 5 electric
Isolated backstay	Yes



PALMER JOHNSON 70



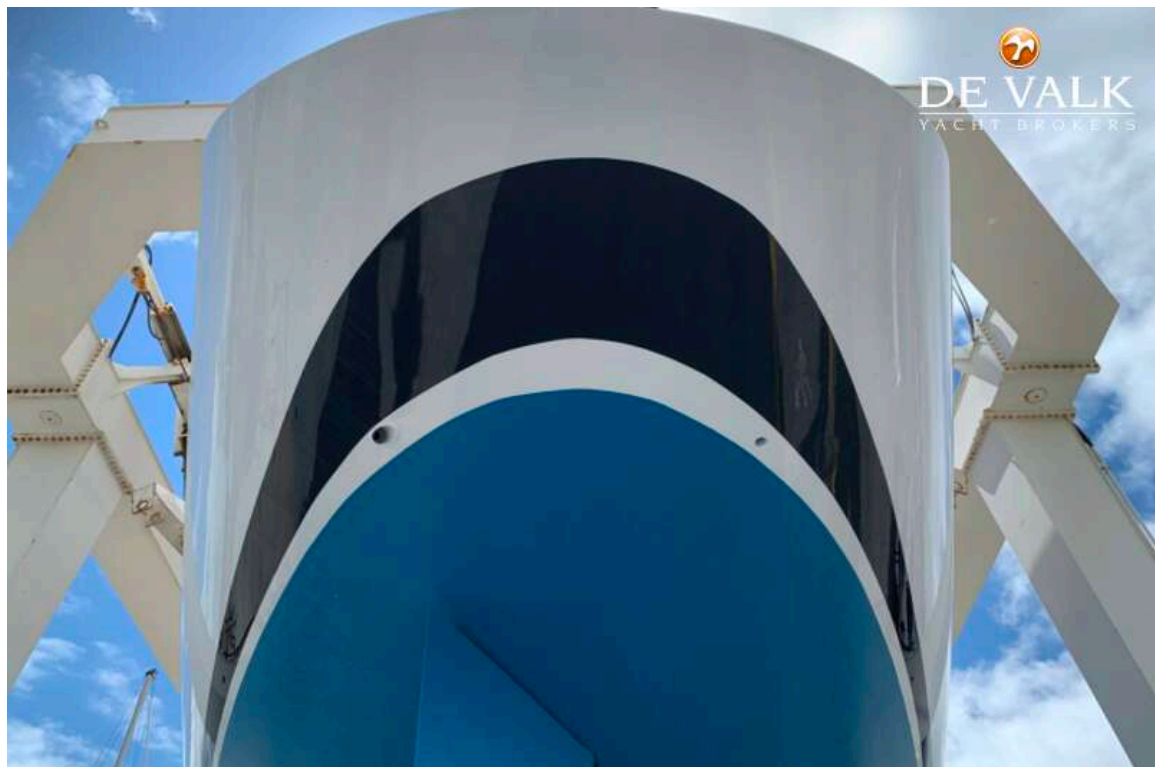
PALMER JOHNSON 70



PALMER JOHNSON 70



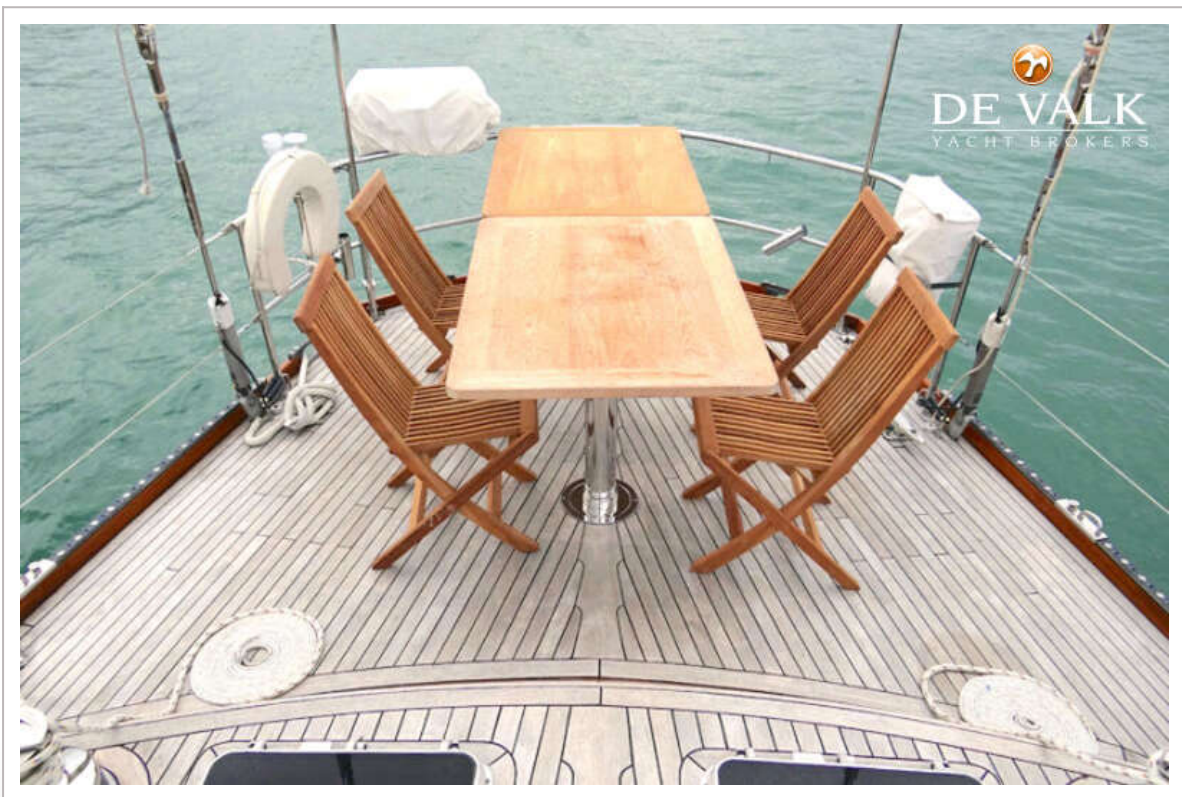
PALMER JOHNSON 70



PALMER JOHNSON 70



PALMER JOHNSON 70



PALMER JOHNSON 70



PALMER JOHNSON 70



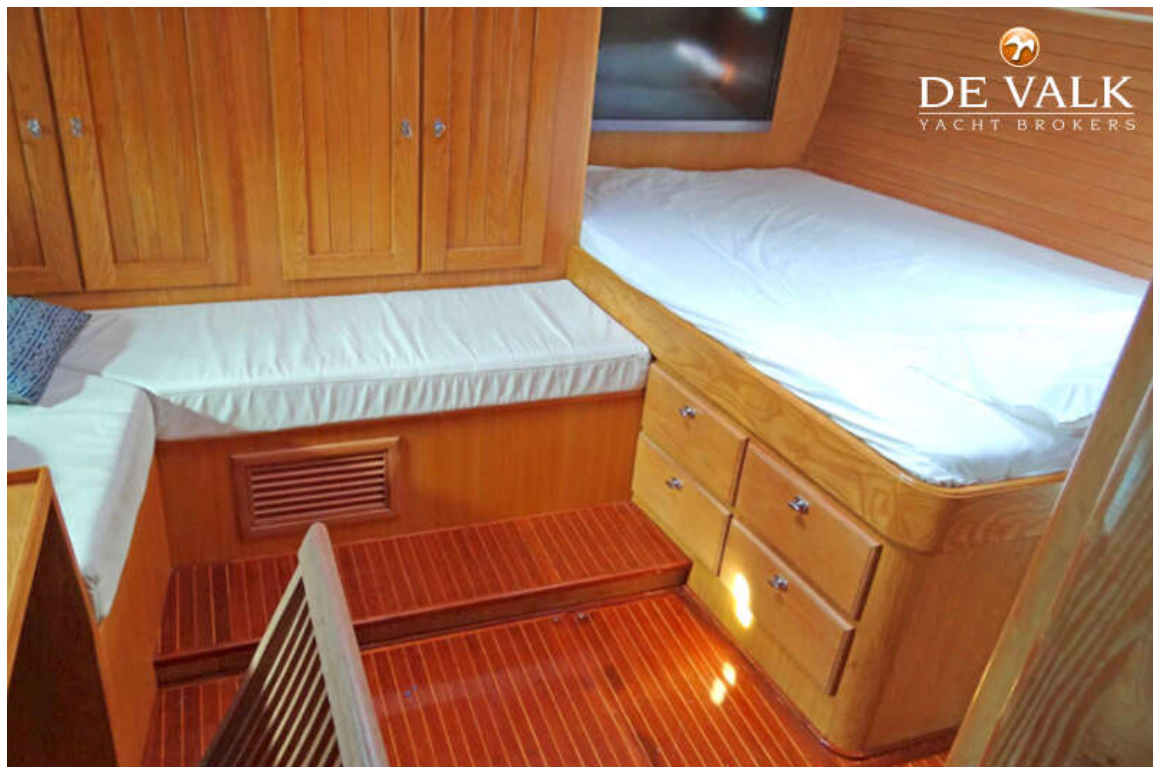
PALMER JOHNSON 70



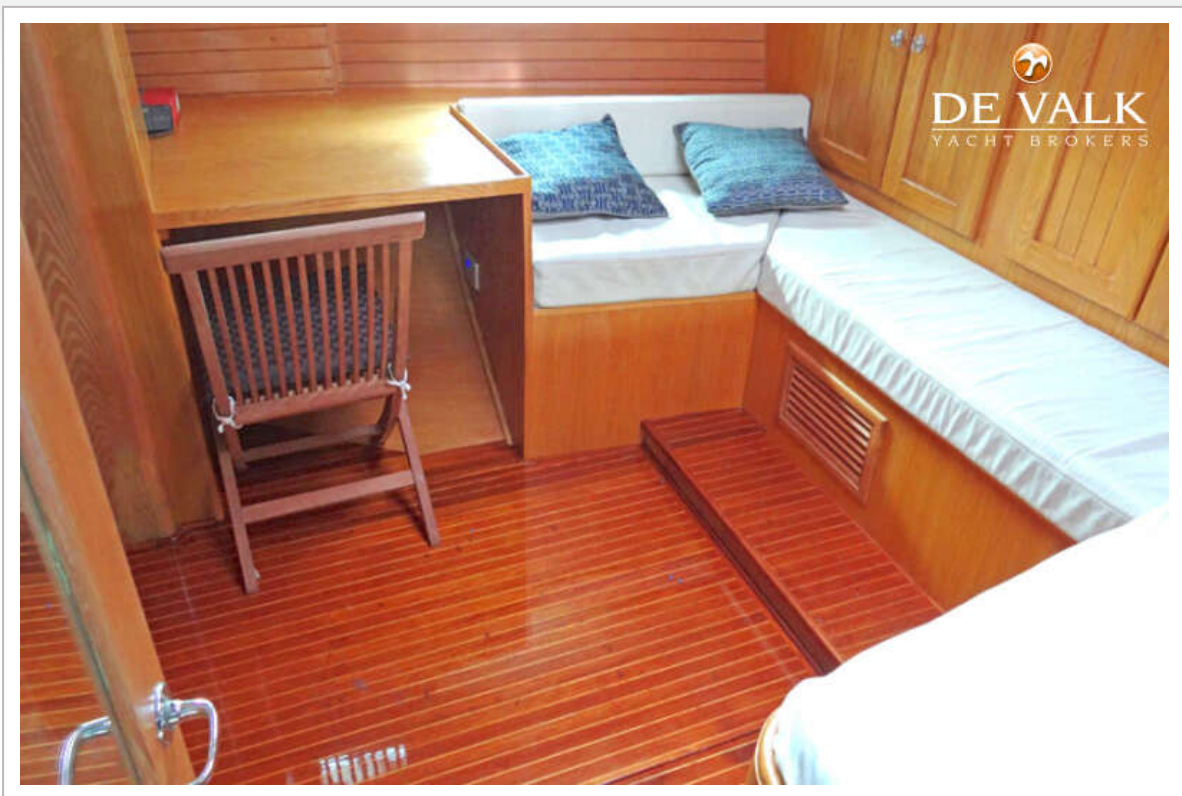
PALMER JOHNSON 70



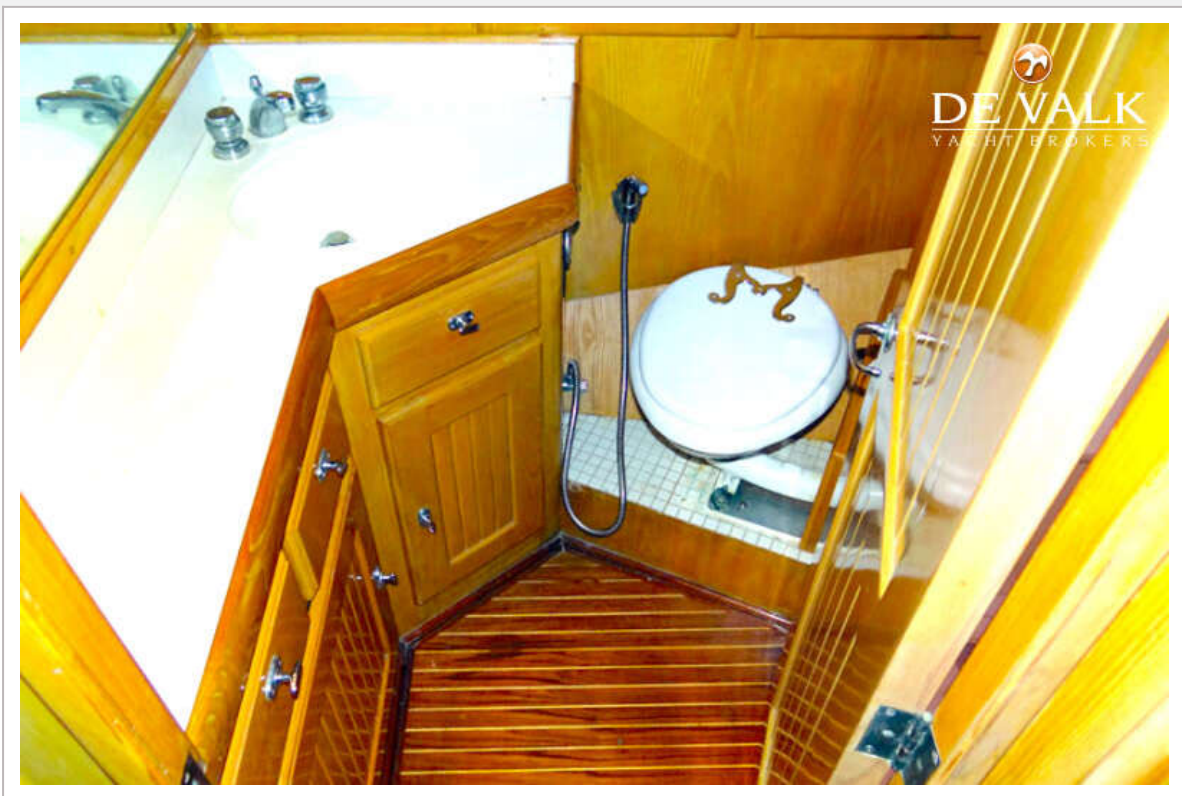
PALMER JOHNSON 70



PALMER JOHNSON 70



PALMER JOHNSON 70



PALMER JOHNSON 70

