



DE VALK
YACHT BROKERS



CATALINA 42 MKII



DE VALK
YACHT BROKERS

CATALINA 42 MKII

BROKER'S COMMENTS

Conceived as the ultimate Catalina, the Catalina 42 MK II interprets the needs and desires expressed by many sailors considering a yacht in the over-forty-foot class. First among these requirements are speed under sail and the easy predictable handling characteristics. An important consideration for many cruising sailors is the ability to realize the Catalina 42 MK II performance potential under sail with a short-handed crew. This beautiful and well maintained sailing yacht is ready for new adventures with its new owner!

Henri van Eelen

SPECIFICATIONS

| | | | |
|---------------------|---------------------------|----------------|------------------------|
| Dimensions | 13.16 x 4.22 x 2.03 (m) | Builder | Catalina Yachts |
| Built | 2008 | Cabins | 3 |
| Material | GRP | Berths | 6 |
| Engine(s) | 1 x Yanmar 4JH4 AE diesel | Hp/Kw | 56.00 (hp), 41.16 (kw) |
| Asking price | sold (VAT) | Lying | at sales office |

CONTACT

| | | | |
|---------------------|--|------------------|-----------------------|
| Sales office | De Valk Hindeloopen | Telephone | +31 514 52 40 00 |
| Address | Oosterstrand 1 8713 JS Hindeloopen The Netherlands | E-mail | hindeloopen@devalk.nl |

DISCLAIMER

These particulars are given in good faith as supplied but cannot be guaranteed.



CATALINA 42 MKII

GENERAL

| | |
|-----------------------------------|---------------------|
| Model | CATALINA 42 MKII |
| Type | sailing yacht |
| LOA (m) | 13,16 |
| LWL (m) | 10,97 |
| Beam (m) | 4,22 |
| Draft (m) | 2,03 |
| Air draft (m) | 17,86 |
| Headroom (m) | 2,03 |
| Year built | 2008 |
| Builder | Catalina Yachts |
| Country | U.S.A. |
| Designer | Gerry Douglas |
| Displacement (t) | 9,3 |
| Ballast (tonnes) | lead 3,8 |
| CE norm | A |
| Hull material | GRP |
| Hull colour | white |
| Hull shape | round-bilged |
| Keel type | fin keel |
| Superstructure material | GRP |
| Superstructure (mm) | yes |
| Rubbing strake | aluminum |
| Deck material | GRP |
| Deck finish | non-skid moulded in |
| Superstructure deck finish | non-skid moulded in |
| Cockpit deck finish | non-skid moulded in |
| Window frame | stainless steel |
| Window material | perspex |
| Deckhatch | 5x |
| Fuel tank (litre) | 174 ltr. |



CATALINA 42 MKII

| | |
|-----------------------------|---------------------------------------|
| Level indicator (fuel tank) | yes |
| Freshwater tank (litre) | 496 ltr. |
| Blackwater tank (litre) | Forward tank 114 ltr. Aft tank 83 ltr |
| Wheel steering | mechanical Edson |
| Emergency tiller | yes |

ACCOMMODATION

| | |
|-----------------------|--|
| Cabins | 3 |
| Berths | 6 |
| Interior | teak |
| Floor | teak and holly |
| Saloon | yes |
| Headroom saloon (m) | 2,03 mtr. |
| Heating | diesel ducted hot air Webasto AirTop Evo |
| Navigation center | yes |
| Chart table | yes |
| Aft Cabin | 2x |
| Galley | yes |
| Countertop | corian |
| Sink | stainless steel Double |
| Cooker | calor gas 3 burner |
| Oven | In cooker |
| Microwave | Exquisit |
| Fridge | Isotherm Asu |
| Hot water system | 220V + engine |
| Water pressure system | electrical |
| Owners cabin | double bed Pullman owners berth |
| Bed length (m) | > 2.00 mtr. |
| Wardrobe | hanging/drawers/shelves |
| Bathroom | en suite |
| Toilet | Jabsco |



CATALINA 42 MKII

| | |
|----------------|--------------|
| Toilet system | manual |
| Wash basin | Yes |
| Shower | Shower cabin |
| Guest cabin 1 | double bed |
| Bed length (m) | > 2.00 mtr. |
| Wardrobe | shelves |
| Guest cabin 2 | double bed |
| Bed length (m) | > 2.00 mtr. |
| Wardrobe | shelves |
| Bathroom | shared |
| Toilet | Jabsco |
| Toilet system | manual |

MACHINERY

| | |
|--------------------------|---------------------------|
| No of engines | 1 |
| Make | Yanmar |
| Type | 4JH4 AE |
| HP | 56 |
| kW | 41,16 |
| Fuel | diesel |
| Year of overhaul | Rev. counter doesnt work |
| Cruising speed (kn) | 7 |
| Engine hours | 800 |
| Engine cooling system | freshwater heat exchanger |
| Drive | shaft |
| Engine controls | bowden cable |
| Gearbox | mechanical |
| Bowthruster | electric |
| Exhaust | watercooled |
| Propeller blades | 3 |
| Propeller shaft material | stainless steel |



CATALINA 42 MKII

| | |
|-------------------------|--------------------------------------|
| Shaft lubrication | water |
| Manual bilge pump | yes |
| Electric bilge pump | yes |
| Electrical installation | 12V / 22V |
| Start battery | yes |
| Service battery | yes |
| Battery charger | Mastervolt Charger IVO Smart 12/25-3 |
| Shorepower | with cable |

NAVIGATION

| | |
|-------------------|-------------------------------|
| Compass | yes |
| Depth sounder | Raymarine ST60 DEPTH |
| Log | Raymarine ST60 SPEED |
| Windset | Raymarine ST60 WIND |
| VHF | Raymarine Ray240E |
| VHF handheld | Raymarine Ray101E |
| Autopilot | Raymarine ST6002 - Smartpilot |
| Radar | Raymarine |
| Plotter/GPS | Hand held Raymarine RC400 |
| Radar/GPS/plotter | Raymarine E80 |
| Navtex | McMurdo ics Nav6 |
| EPIRB | Simrad EG50 |
| Navigation lights | yes |

EQUIPMENT

| | |
|--------------------------|-----|
| Sprayhood with grab rail | yes |
| Cockpit cover | yes |
| Bimini | yes |
| Cockpit cushions | yes |
| Cockpit table | yes |
| Bathing platform | yes |



| | |
|----------------------------|--------------------|
| Boarding ladder | stainless steel |
| Deck shower | yes |
| Anchor | CQR Plough |
| Anchor chain | yes |
| Windlass | electrical Maxwell |
| Capstan | yes |
| Sea railing | stainless steel |
| Grab rail (superstructure) | stainless steel |
| Railing side opening gates | yes |
| Pushpit | With seats |
| Pulpit | yes |
| Lifebuoy | yes |
| Danbuoy | yes |
| Fenders | yes |
| Mooring lines | yes |
| TV | liyama |
| Radio-cd player | Jensen Power |
| Speakers in salon | Bose |
| Fire extinguisher | yes |

RIGGING

| | |
|-------------------|-----------------|
| Rigging | sloop-cutter |
| Standing rigging | wire |
| Brand mast | Charleston spar |
| Material mast | aluminium |
| Spreaders | 2 pair |
| Keel stepped mast | yes |
| Mainsail | 2015 |
| Stoway mast | yes |
| Cutterstay | yes |
| Jib | yes |



CATALINA 42 MKII

| | |
|----------------------------|----------------------|
| Genoa | 2015 |
| Genoa furler | Schaefer System 3100 |
| Cutter furler | Schaefer System 2100 |
| Gennaker | yes |
| Reefing System | main in-mast furling |
| Boomvang | gasspring |
| Primary sheet winch | 2x Lewmar 48 |
| Genoa sheetwinches | 2x Lewmar 54 |
| Halyard winches | 2x Lewmar 40 |
| Jockey-pole | aluminium Seldén |



CATALINA 42 MKII



CATALINA 42 MKII



CATALINA 42 MKII



CATALINA 42 MKII



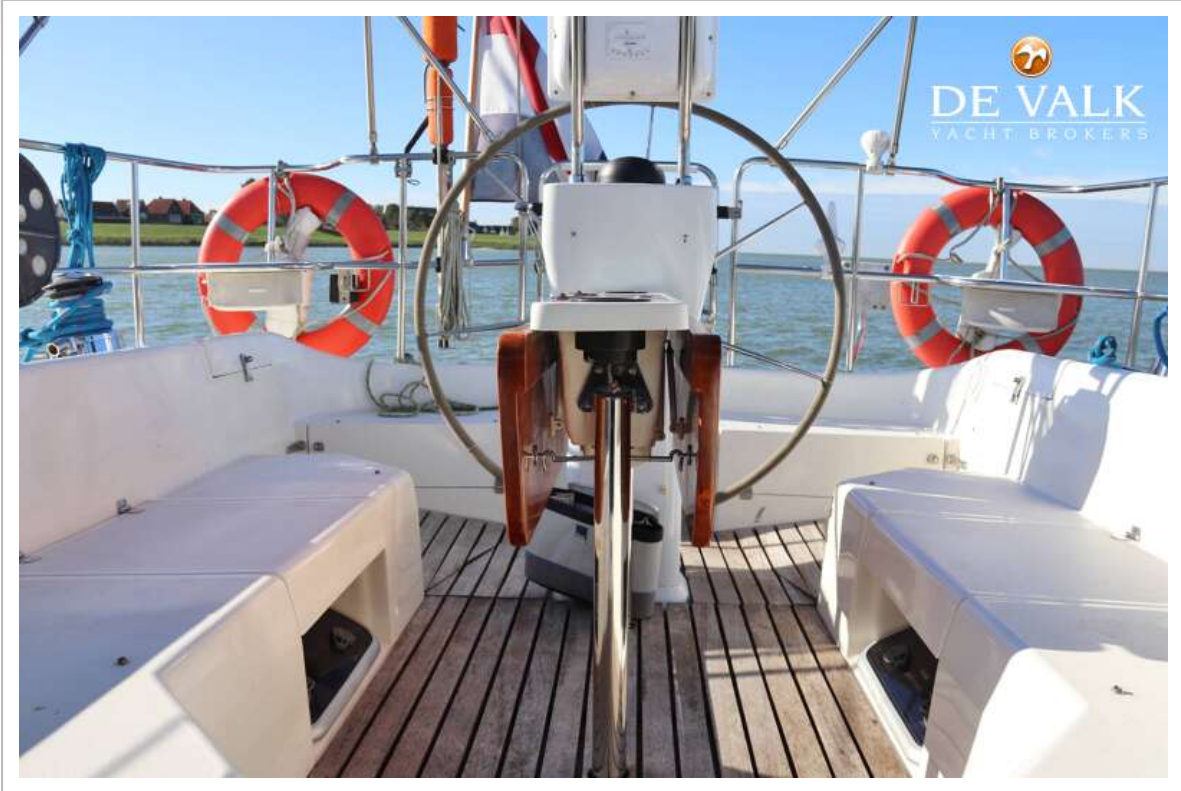
CATALINA 42 MKII



CATALINA 42 MKII



CATALINA 42 MKII



CATALINA 42 MKII



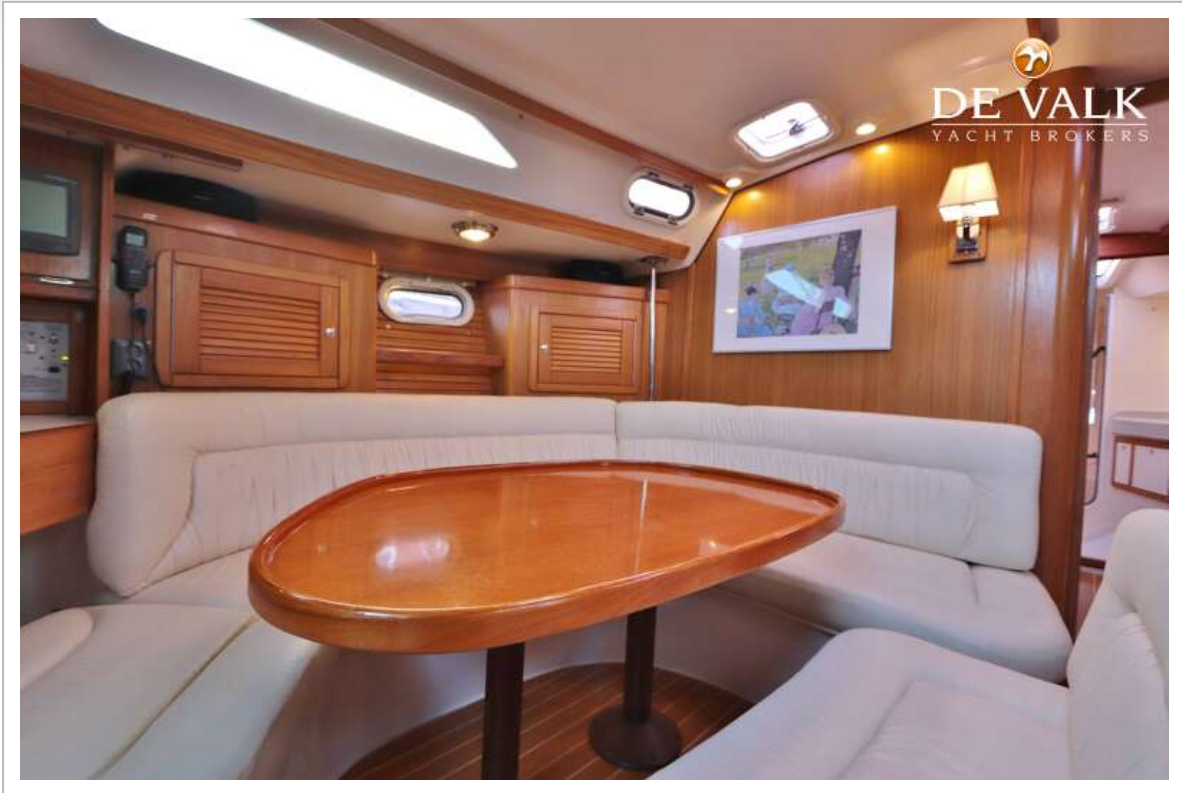
CATALINA 42 MKII



CATALINA 42 MKII



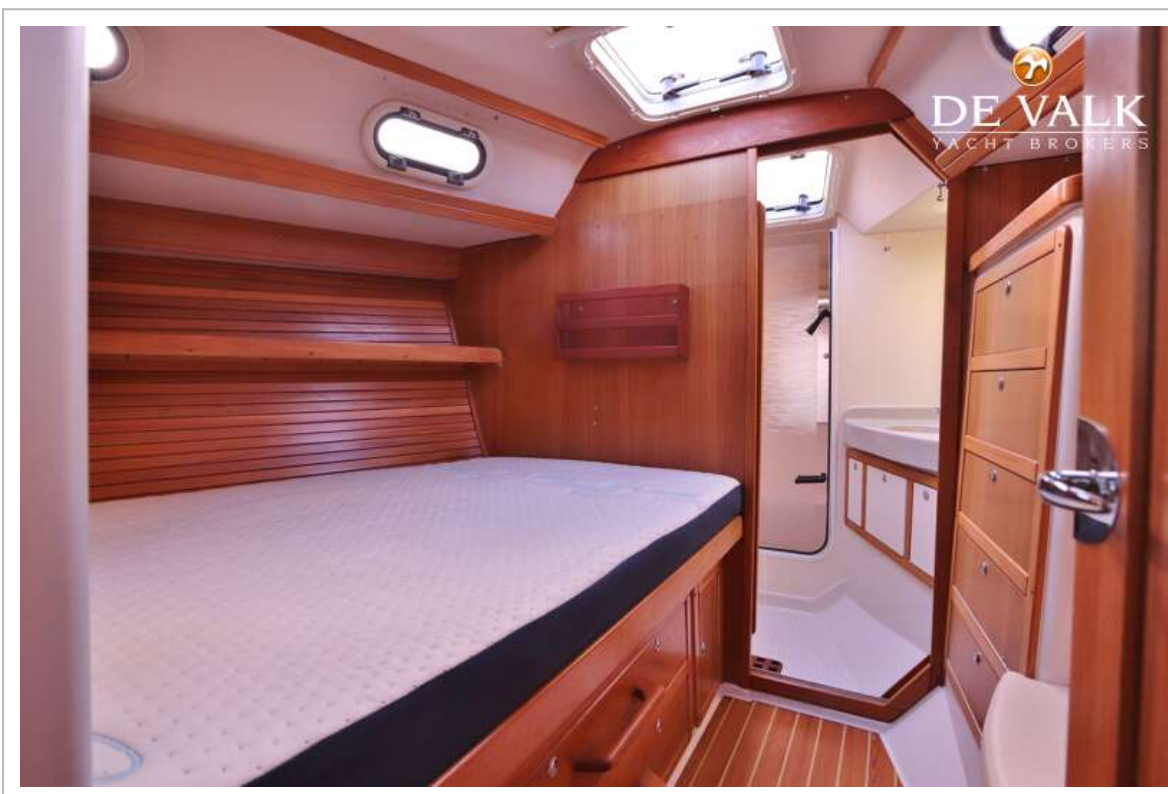
CATALINA 42 MKII



CATALINA 42 MKII



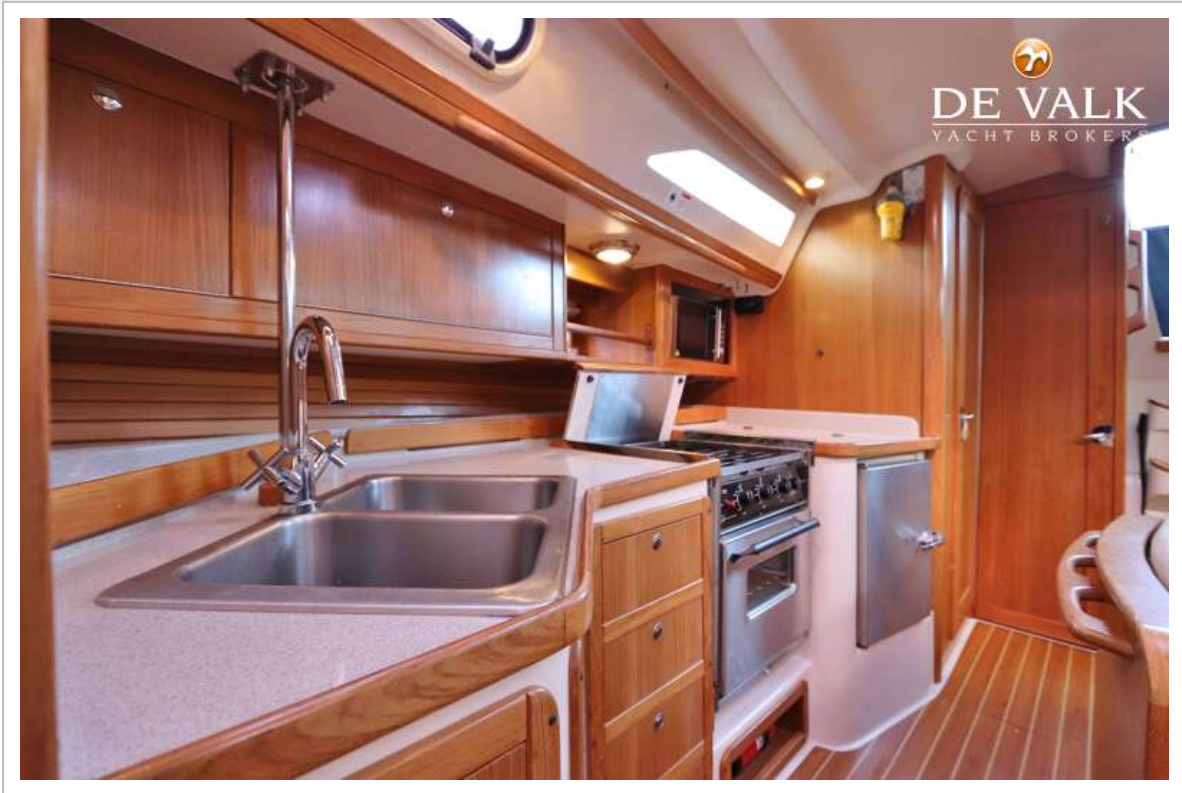
CATALINA 42 MKII



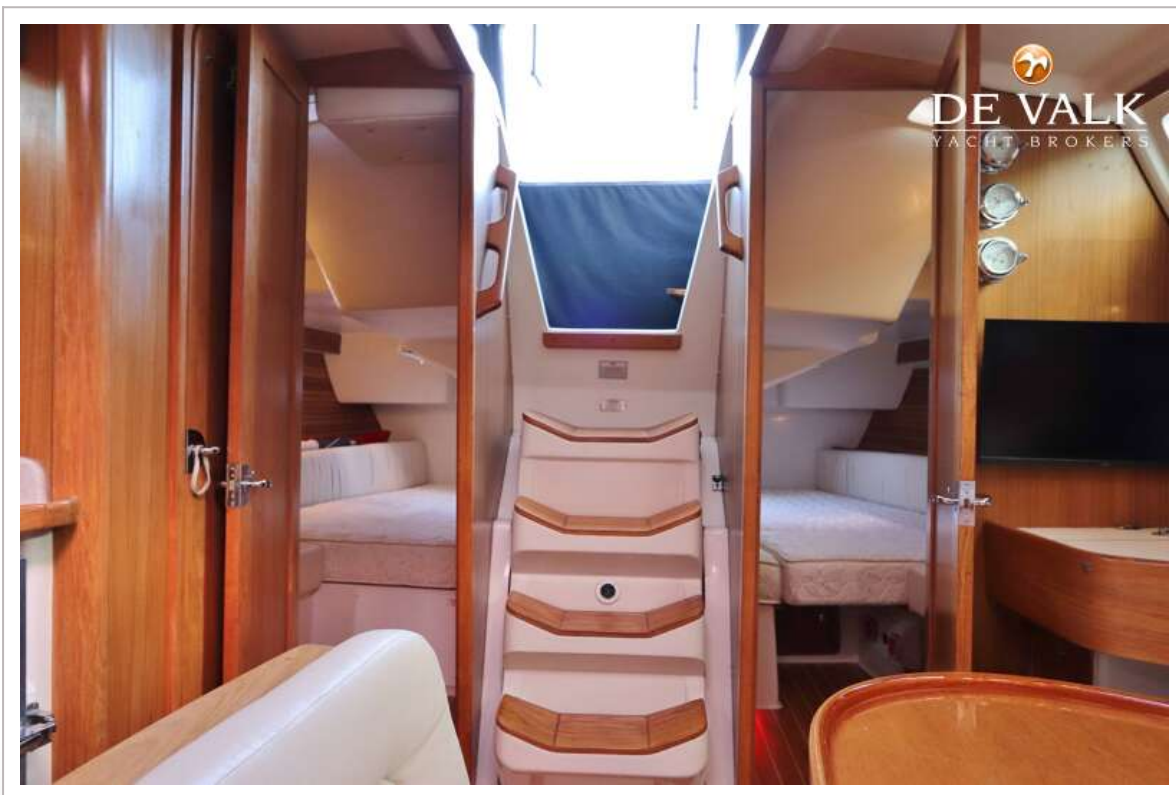
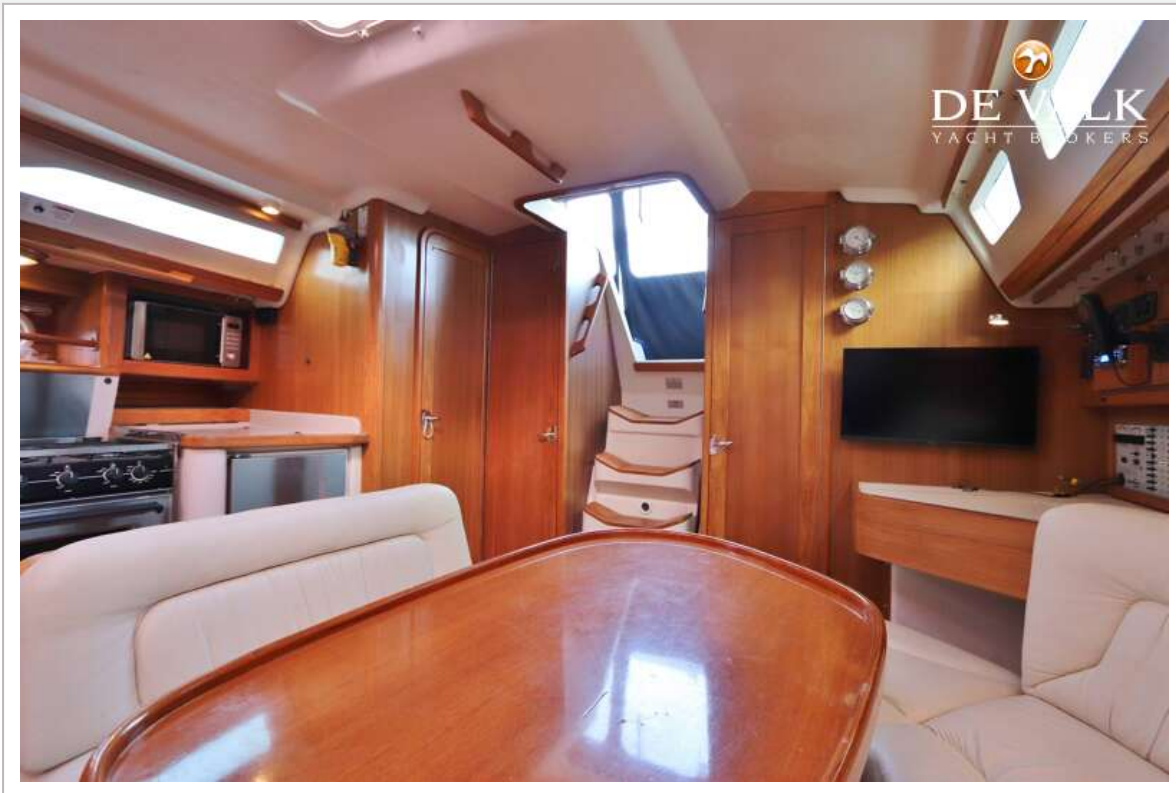
CATALINA 42 MKII



CATALINA 42 MKII



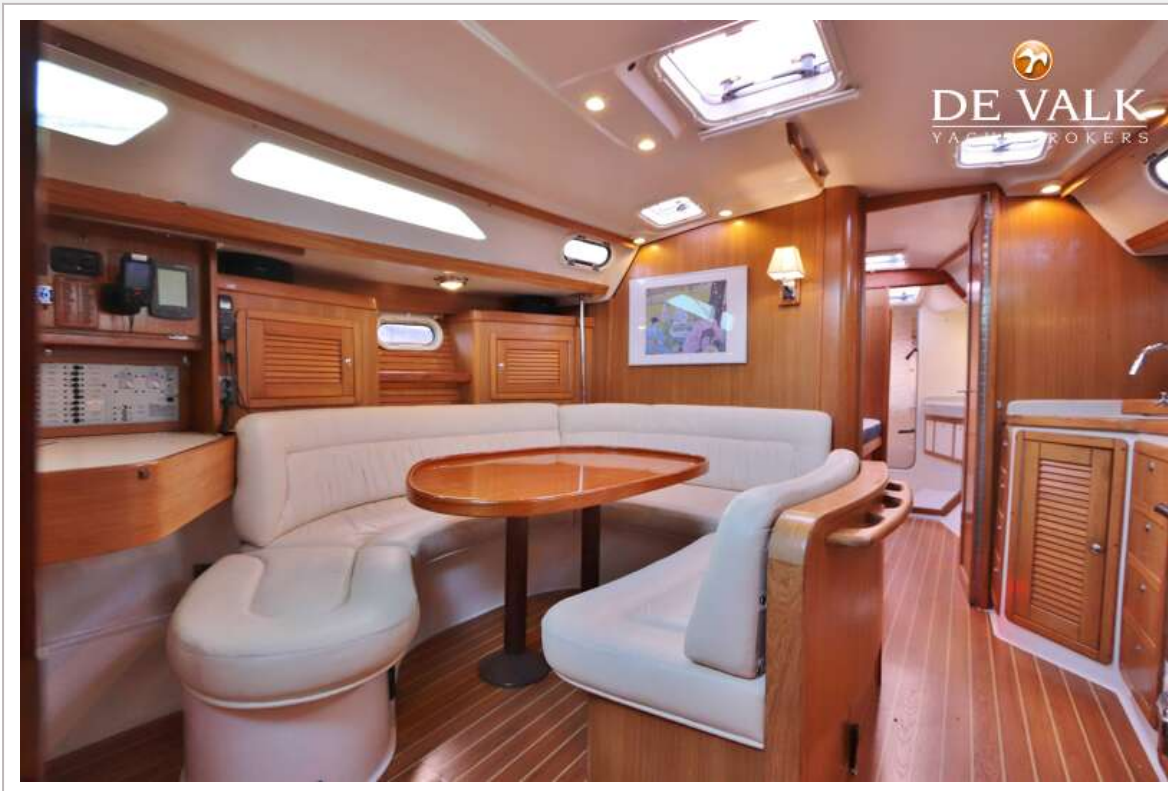
CATALINA 42 MKII



CATALINA 42 MKII



CATALINA 42 MKII



CATALINA 42 MKII

