



DE VALK
YACHT BROKERS



BARKAS 1350 C AK



DE VALK
YACHT BROKERS

BROKERAGE | CHARTER | BERTHS | FINANCE | INSURANCE | YACHT MANAGEMENT

BARKAS 1350 C AK

BROKER'S COMMENTS

This Barkas 1350 C AK is a unique and sturdy Dutch-built ship designed by L.M. Huitema and largely built by the first and only owner. This unique ship, equipped with a big after deck and outside/inside steering is robustly built and has a tough appearance. The Barkas 1350 C AK is richly equipped and spaciouly laid out. In addition to a spacious saloon and kitchen, this Barkas has four cabins and seven fixed berths. Due to the central heating system, washing machine and lots of storage space there is plenty of comfort which makes her ideal for longer stays on board.

Joris van de Rijt

SPECIFICATIONS

Dimensions	13.50 x 4.25 x 1.25 (m)	Builder	self-build
Built	1997	Cabins	4
Material	Steel	Berths	7
Engine(s)	1 x MAN D0826G diesel	Hp/Kw	145.00 (hp), 106.72 (kw)
Asking price	€ 130.000 (VAT Paid)	Lying	elsewhere / Not at sales office

CONTACT

Sales office	De Valk Sint Annaland B.V.	Telephone	+31 (0)166 601 000
Address	Koelhuisweg 4 4697 RM Sint Annaland NL	E-mail	sintannaland@devalk.nl

DISCLAIMER

These particulars are given in good faith as supplied but cannot be guaranteed.



BARKAS 1350 C AK

GENERAL

Model	BARKAS 1350 C AK
Type	motor yacht
LOA (m)	13,50
LWL (m)	12,24
Beam (m)	4,25
Draft (m)	1,25
Air draft min (m)	3,40
Headroom (m)	2,09
Year built	1997
Launched	2002
Builder	Self-build
Country	The Netherlands
Designer	L. Huitema
Displacement (t)	20
CE norm	NA
Hull material	steel
Hull colour	blue
Hull shape	hard chine
Superstructure material	steel
Rubbing strake	rubber
Deck material	steel
Deck finish	non-skid paint
Superstructure deck finish	non-skid paint
Cockpit deck finish	non-skid paint
Window frame	aluminium Rhigo
Window material	tempered glass
Deckhatch	1 x
Portholes	12 x
Insulation	glasswool
Mast can be lowered	manual



BARKAS 1350 C AK

Fuel tank (litre)	steel 2 x 500
Fuel tank 2 (litre)	stainless steel For generator only
Level indicator (fuel tank)	Gauge glass on tank
Freshwater tank (litre)	stainless steel 1000
Level indicator (freshwater)	Gauge glass on tank
Blackwater tank (litre)	stainless steel 300
Blackwater tank extraction	deck extraction + pump
Wheel steering	hydraulic
Outside helm position	hydraulic

ACCOMMODATION

Cabins	4
Berths	7
Interior	teak
Floor	wood
Aft deck	yes
Deck saloon	yes
Saloon	yes
Headroom saloon (m)	2,09
Heating	central heating Kabola
Aft Cabin	yes
Dinette	yes
Opening door to cockpit	yes
Galley	yes
Countertop	stainless steel
Sink	stainless steel
Cooker	calor gas 4 burner
Oven	Smev
Microwave	Proline
Fridge	2 x Electrolux with freezer compartment
Freezer	Everglades



BARKAS 1350 C AK

Hot water system	geyser on Calor Gas
Water pressure system	electrical
Owners cabin	double bed Front
Bed length (m)	2,00 x 1,40
Wardrobe	hanging and shelves
Bathroom	shared
Toilet	shared
Toilet system	manual
Wash basin	at the toilet + in the shower
Shower	shared
Guest cabin 1	double bed Under saloon
Bed length (m)	2,00 x 1,15
Wardrobe	hanging
Guest cabin 2	double bed Aft starboard side
Bed length (m)	1,98 x 1,15
Wardrobe	shelves
Guest cabin 3	single bed Aft port side
Bed length (m)	1,98 x 0,75
Wardrobe	shelves
Washing machine	Candy

MACHINERY

No of engines	1
Make	MAN
Type	D0826G
HP	145
kW	106.72
Fuel	diesel
Year installed	1999
Year of overhaul	Approx 1998
Engine hours	1443



BARKAS 1350 C AK

Engine cooling system	freshwater heat exchanger
Drive	shaft
Engine controls	bowden cable
Gearbox	hydraulic
Bowthruster	electric Vetus
Propeller type	fixed
Propeller blades	5
Propeller shaft material	stainless steel
Manual bilge pump	yes
Electric bilge pump	yes
Electrical installation	24V / 220V
Generator	Siemens
Start battery	2 x (new 2020)
Service battery	4 x (new 2020)
Battery charger/inverter	Victron Phoenix combi 24/1800/50
Solar panel	On roof
Shorepower	with cable

NAVIGATION

Depth sounder	Koden
VHF	Shipmate RS8300
Plotter	Simrad CP 31
Navigation lights	yes
Searchlight	yes

EQUIPMENT

Fixed windscreen	On flybridge
Bathing platform	yes
Boarding ladder	stainless steel
Anchor	CQR Plough Stainless steel
Anchor chain	yes

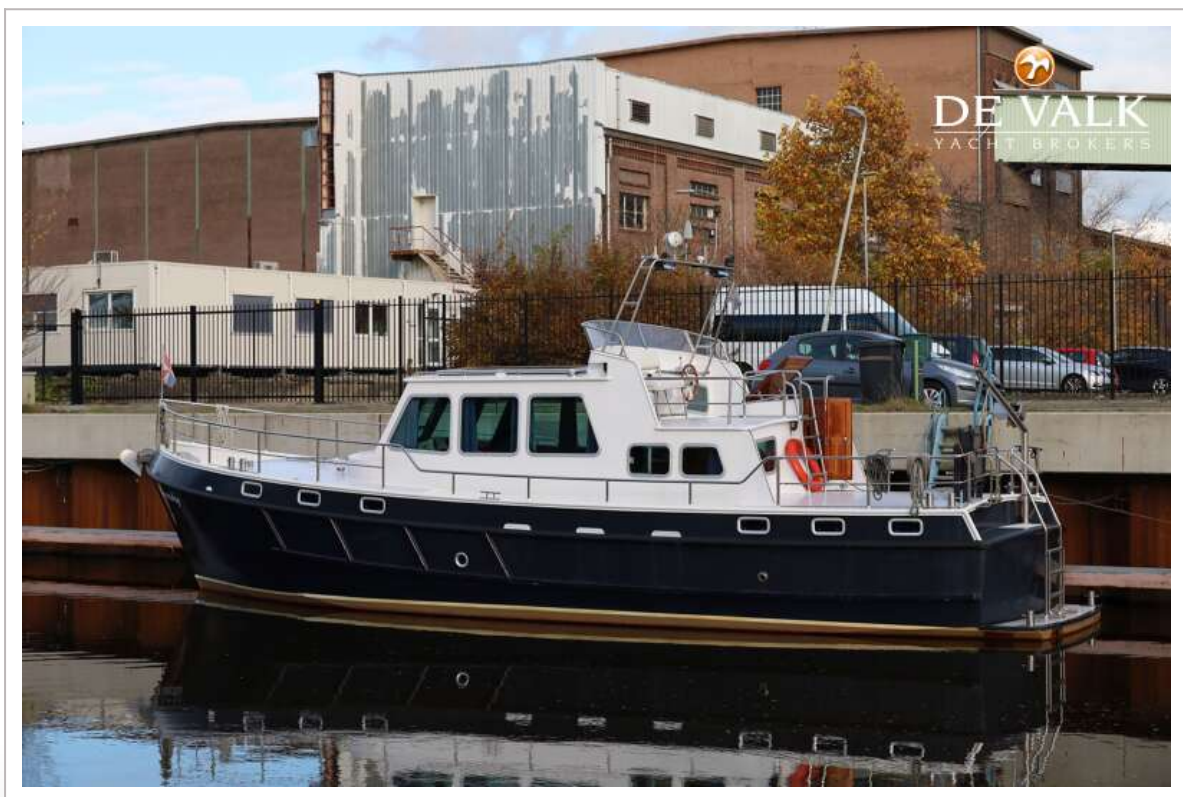


BARKAS 1350 C AK

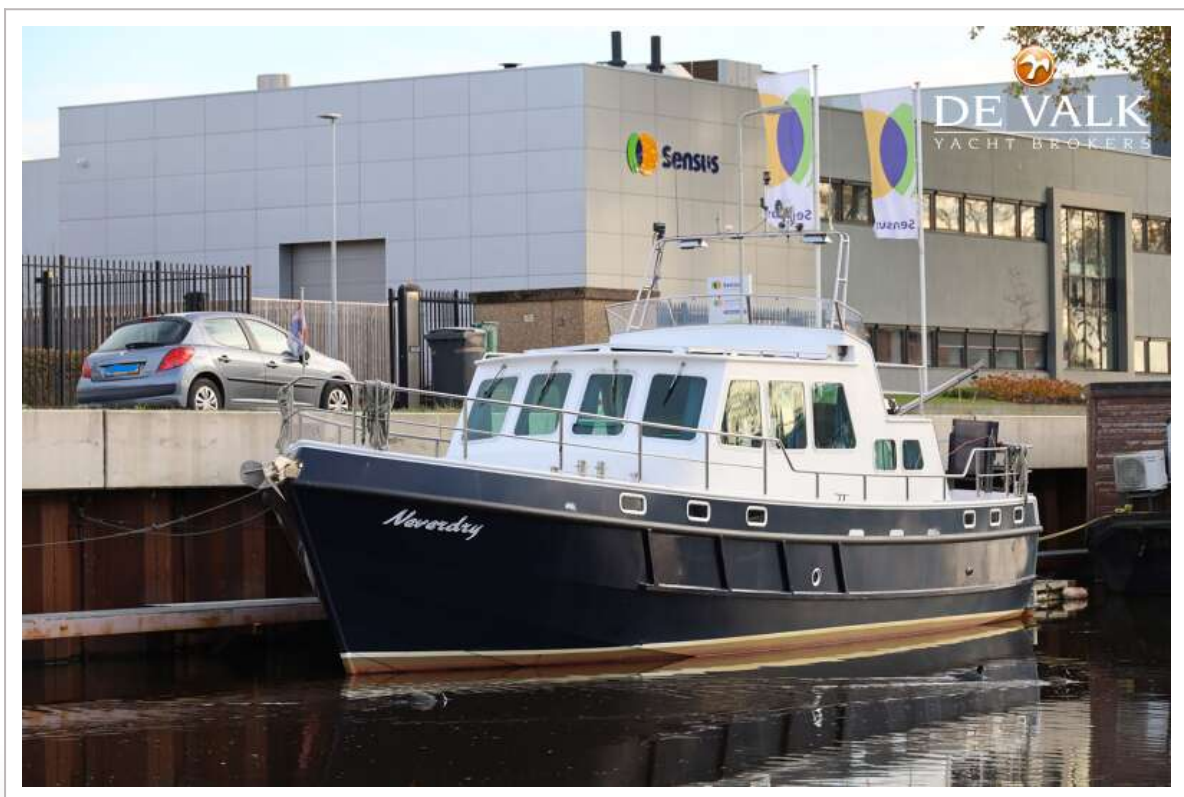
Windlass	electrical Vetus
Capstan	On windlass
Deck crane	electric 220V
Sea railing	stainless steel
Grab rail (superstructure)	stainless steel
Railing side opening gates	2 x
Pushpit	yes
Pulpit	yes
Lifebuoy	yes
Fenders	yes
Mooring lines	yes
Radio-cd player	Sony
Cockpit speakers	yes
Speakers in salon	yes
Fire extinguisher	3 x (needs survey)



BARKAS 1350 C AK



BARKAS 1350 C AK



BARKAS 1350 C AK



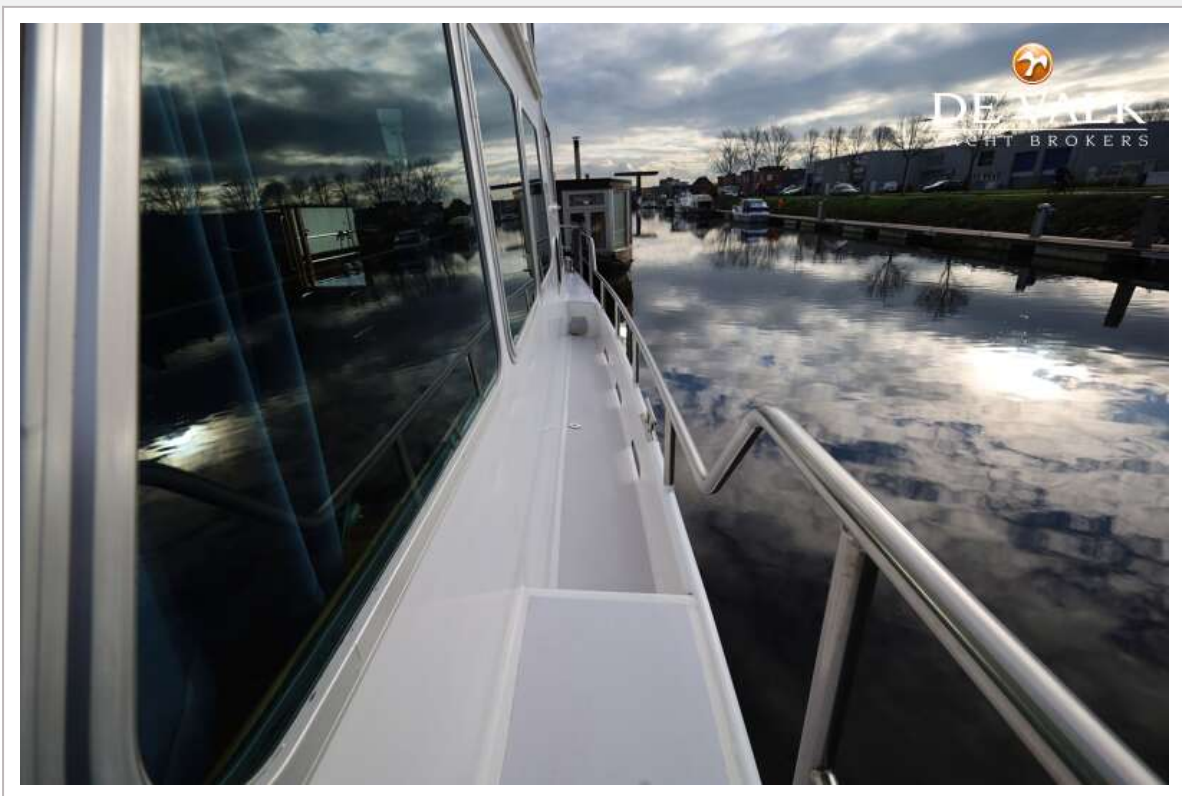
BARKAS 1350 C AK



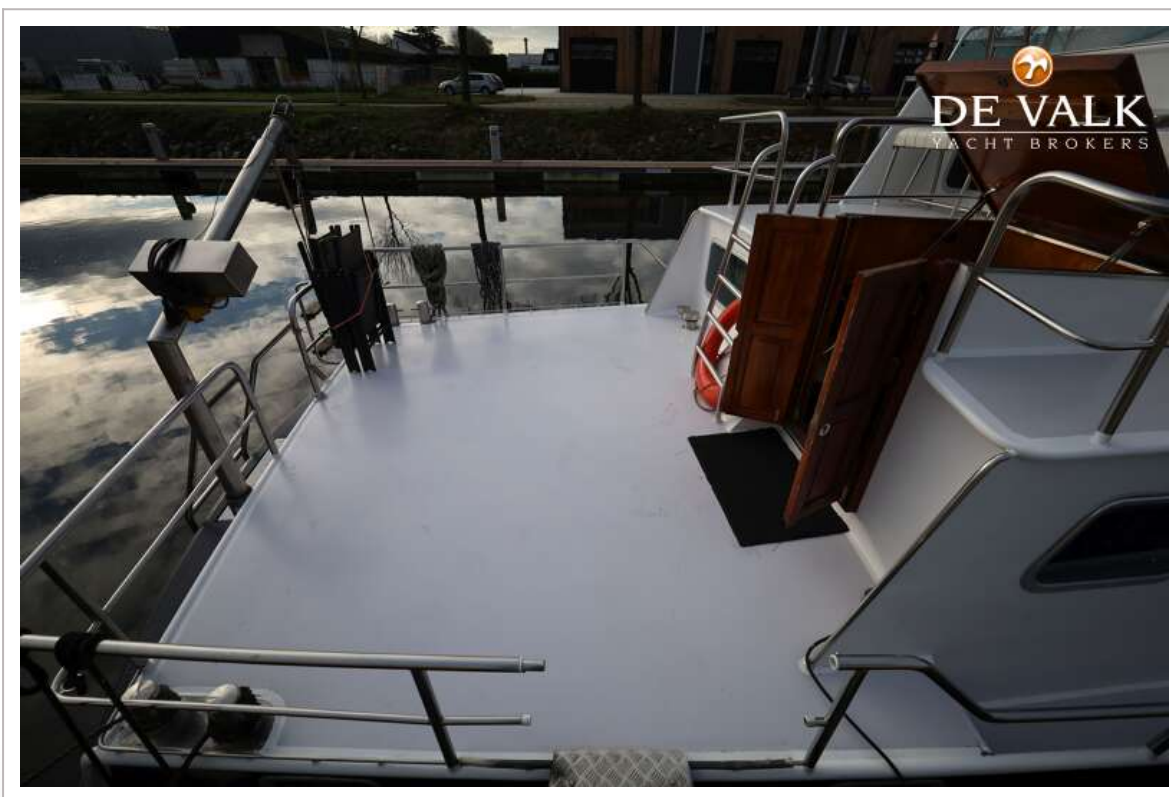
BARKAS 1350 C AK



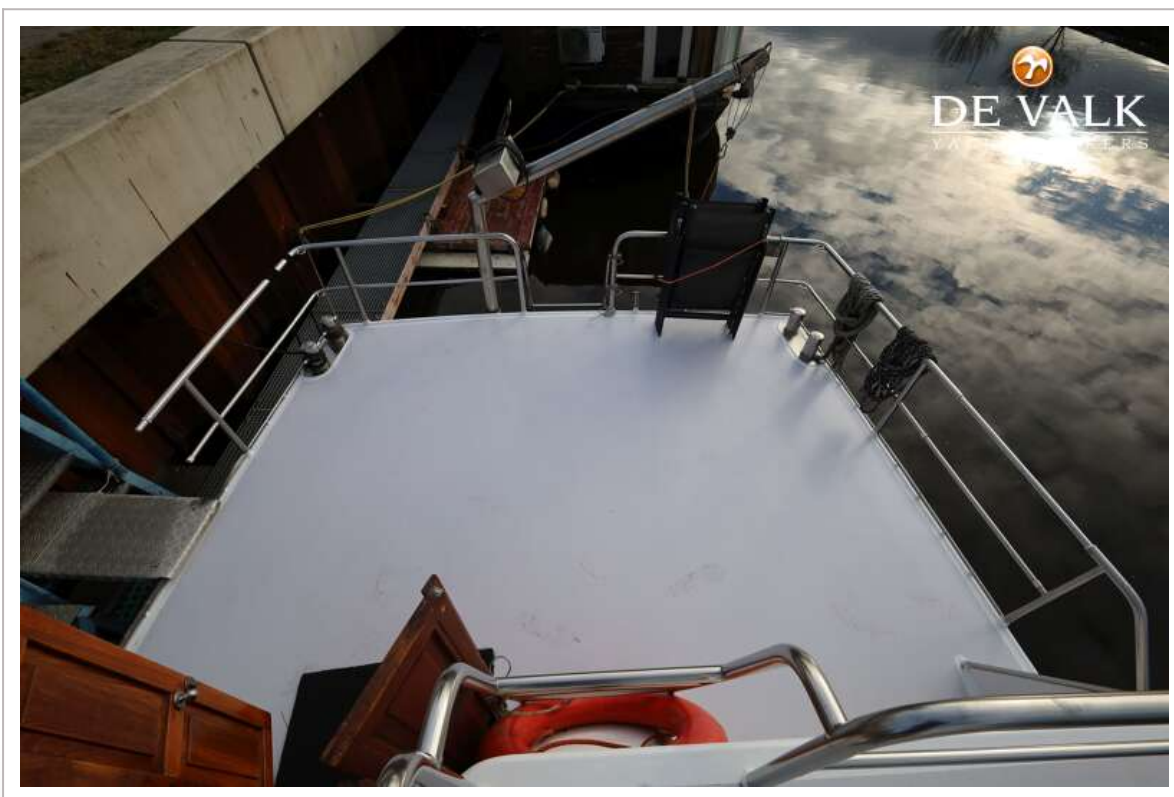
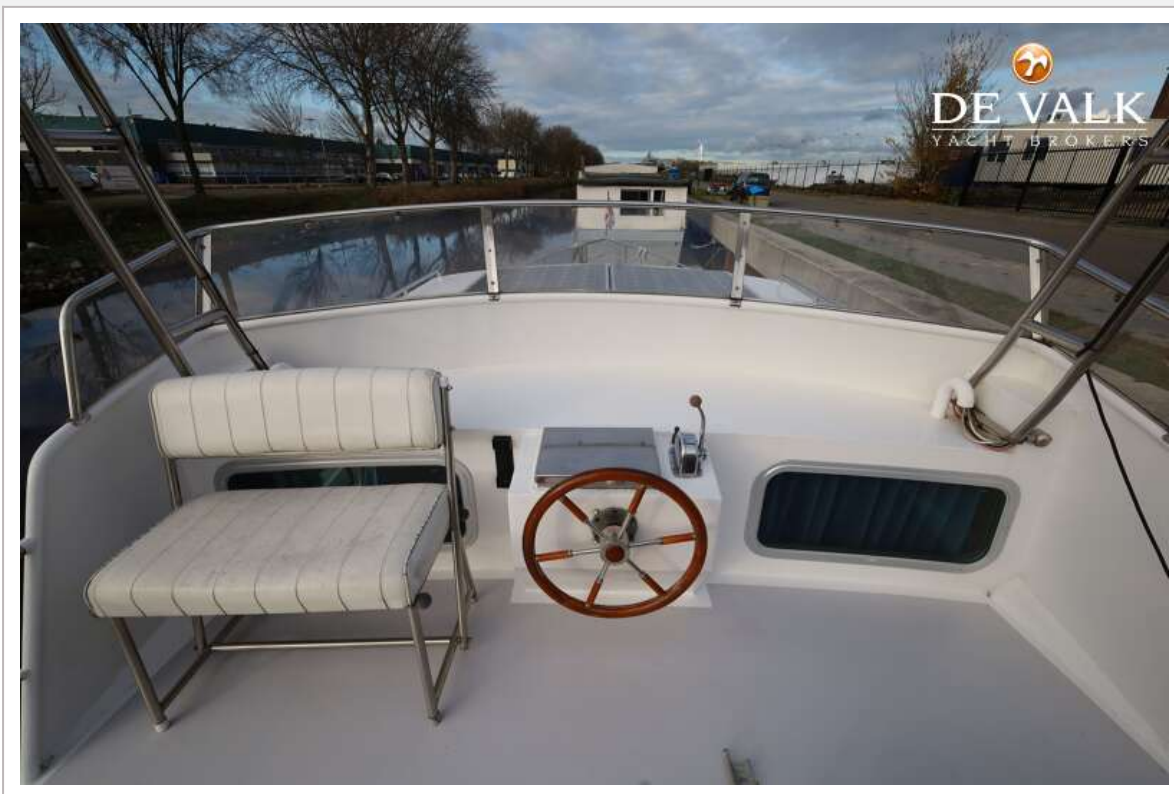
BARKAS 1350 C AK



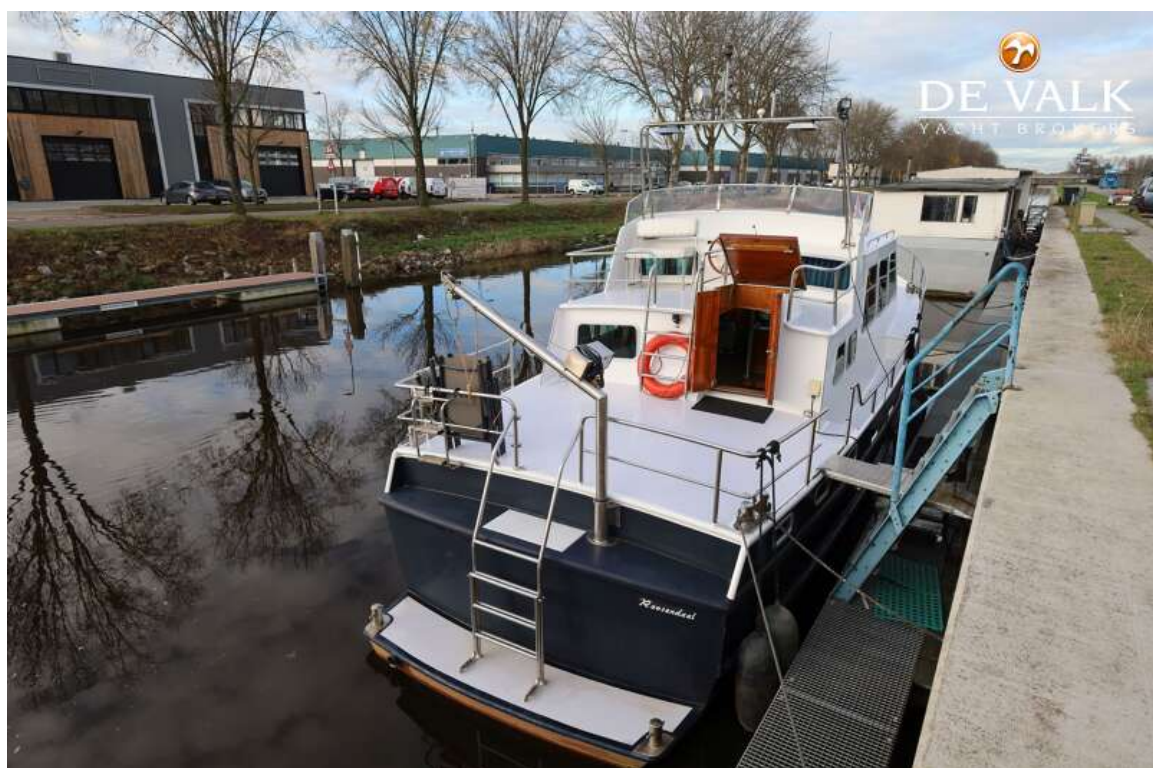
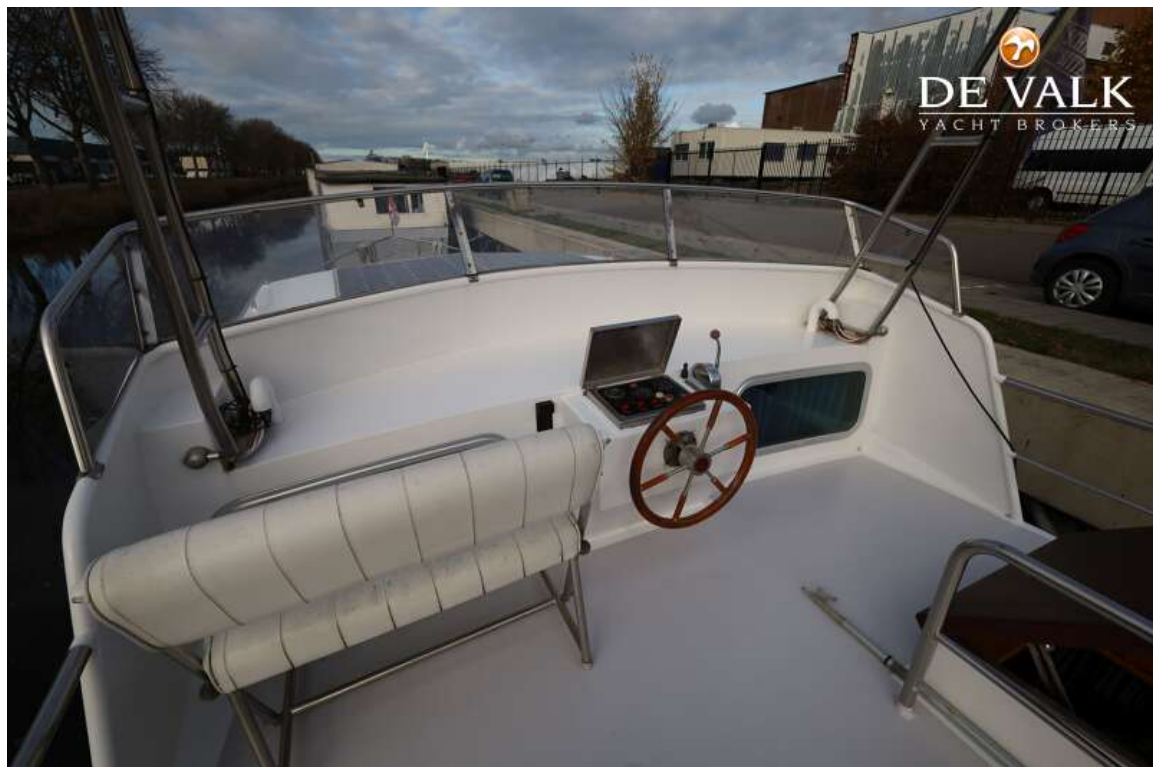
BARKAS 1350 C AK



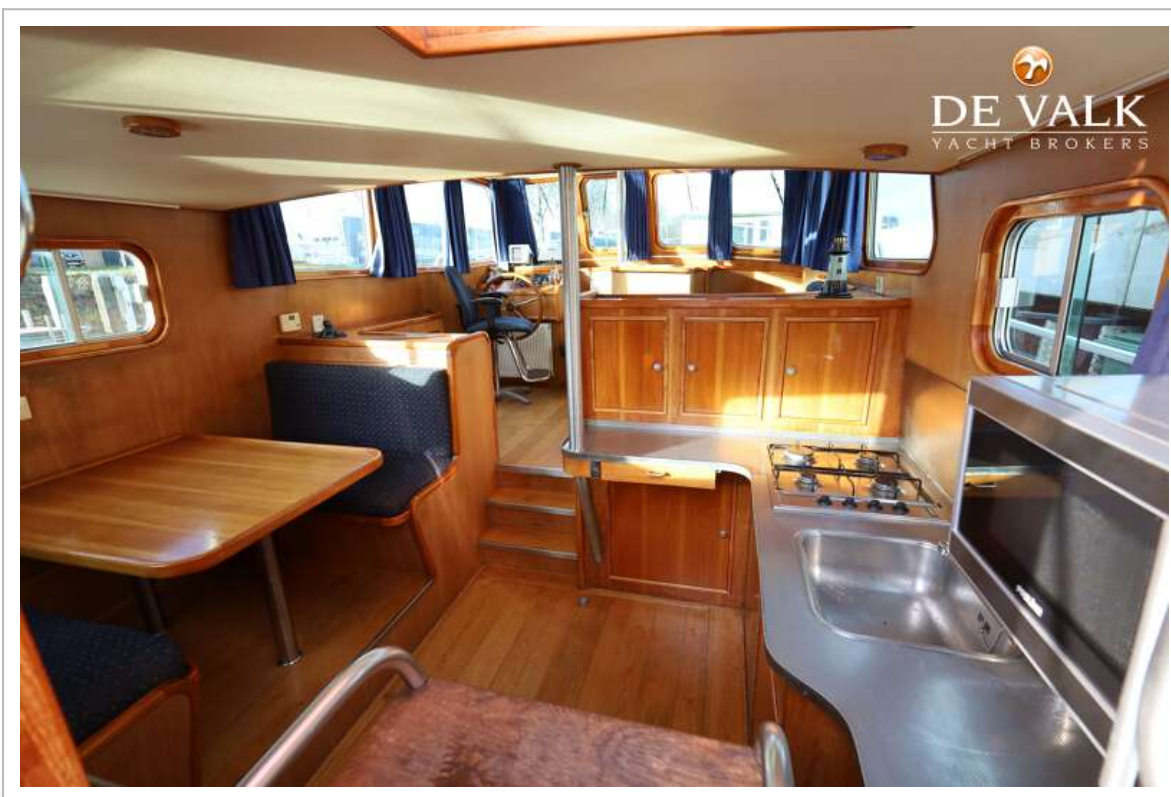
BARKAS 1350 C AK



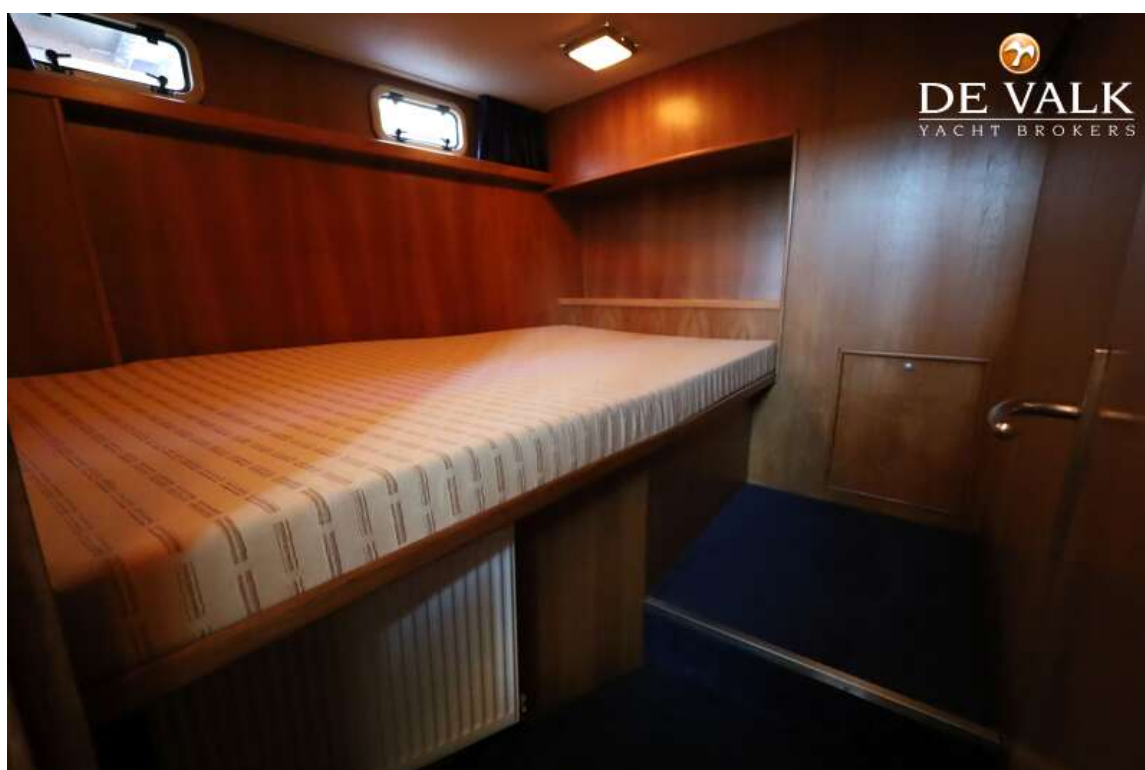
BARKAS 1350 C AK



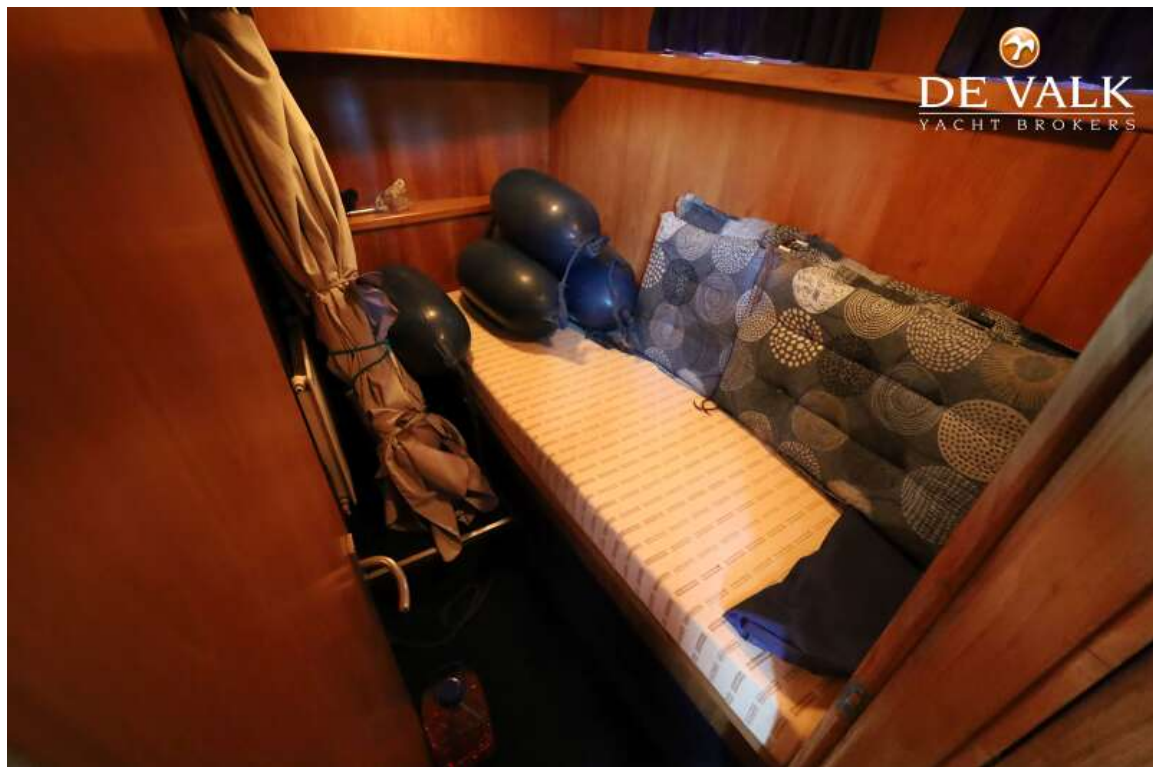
BARKAS 1350 C AK



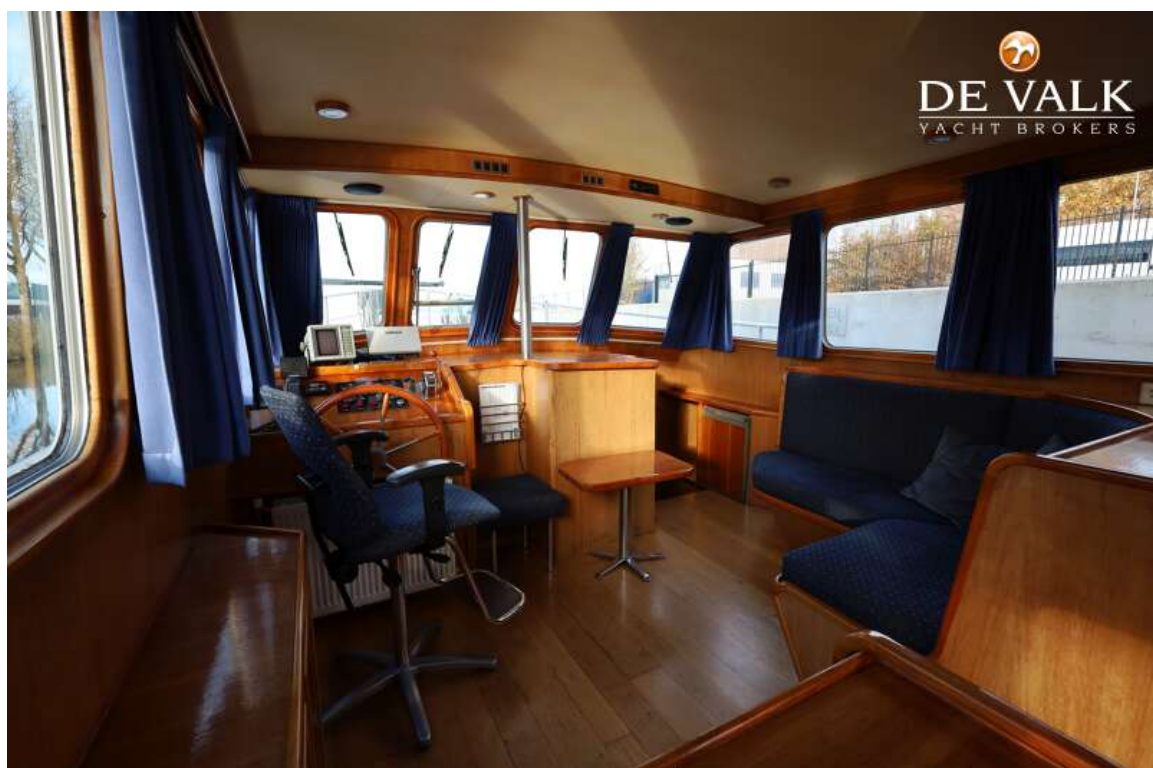
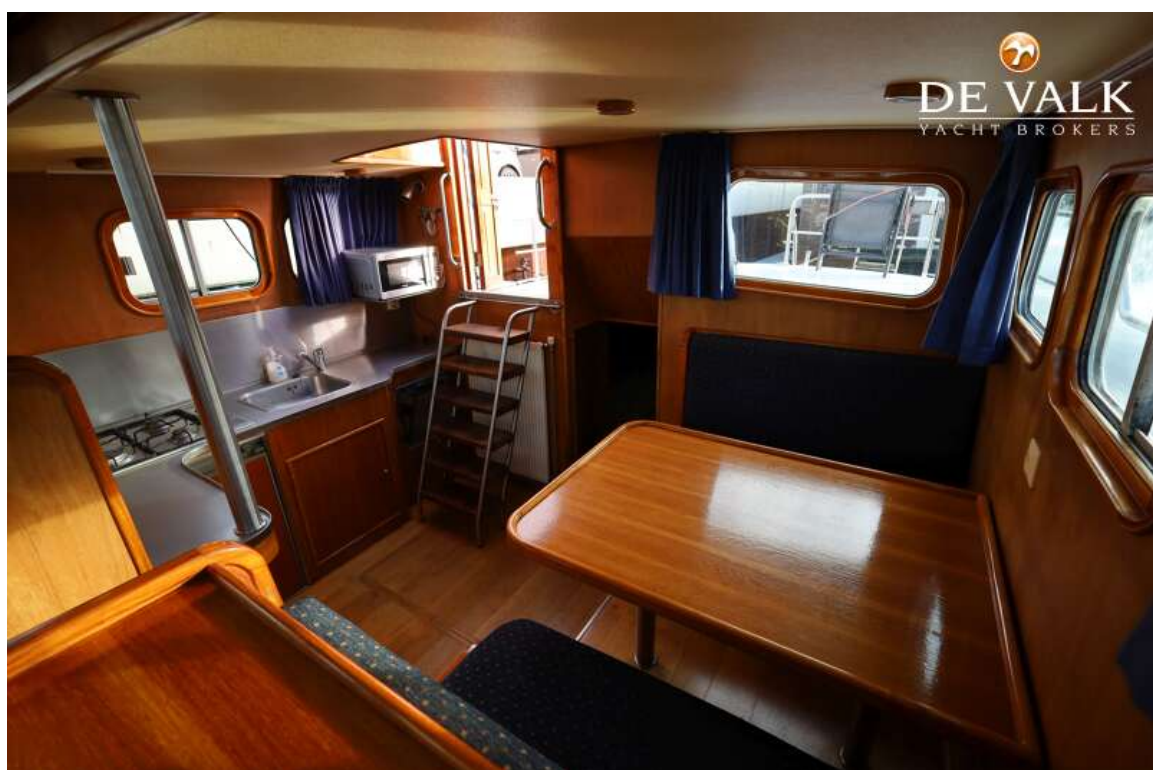
BARKAS 1350 C AK



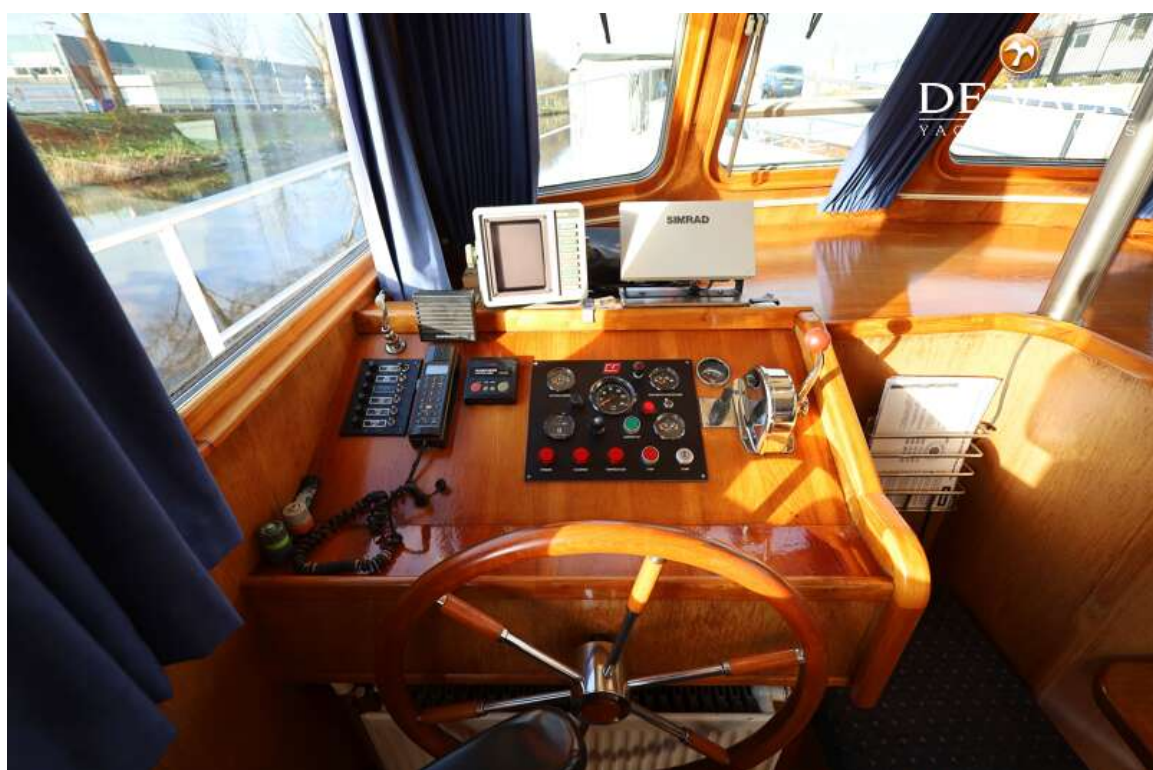
BARKAS 1350 C AK



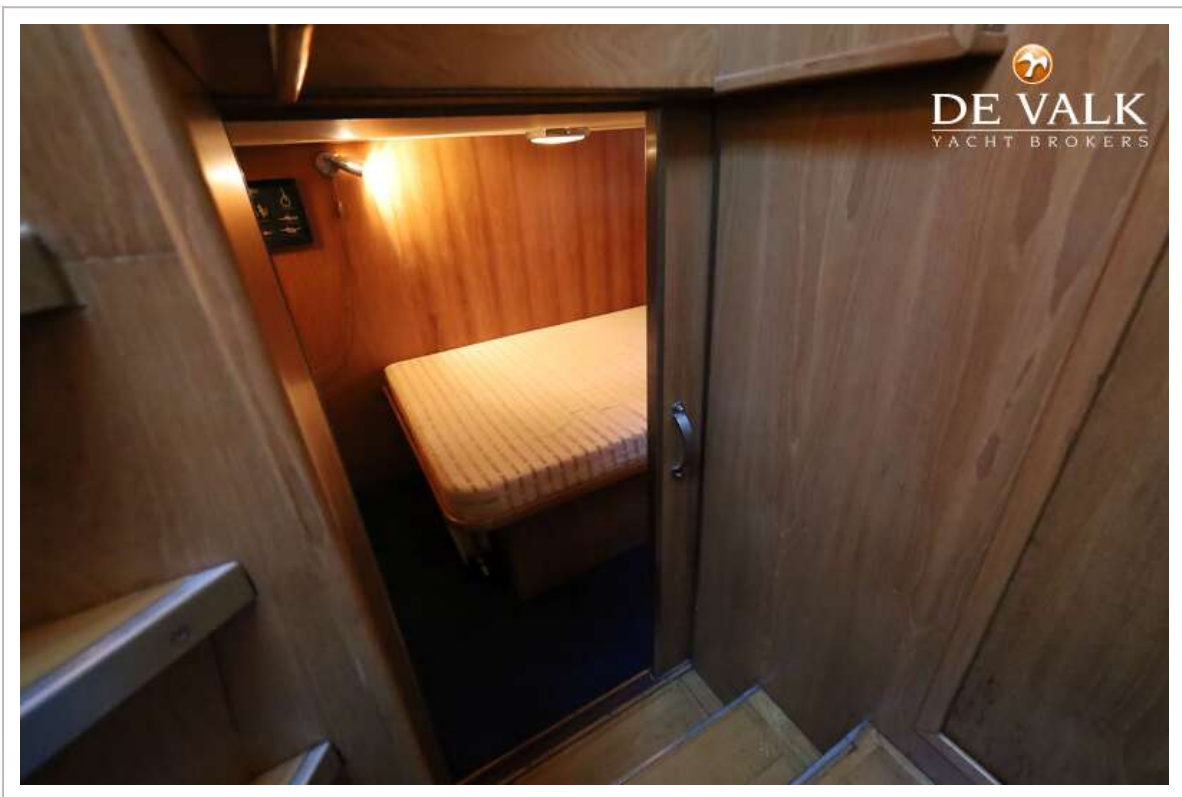
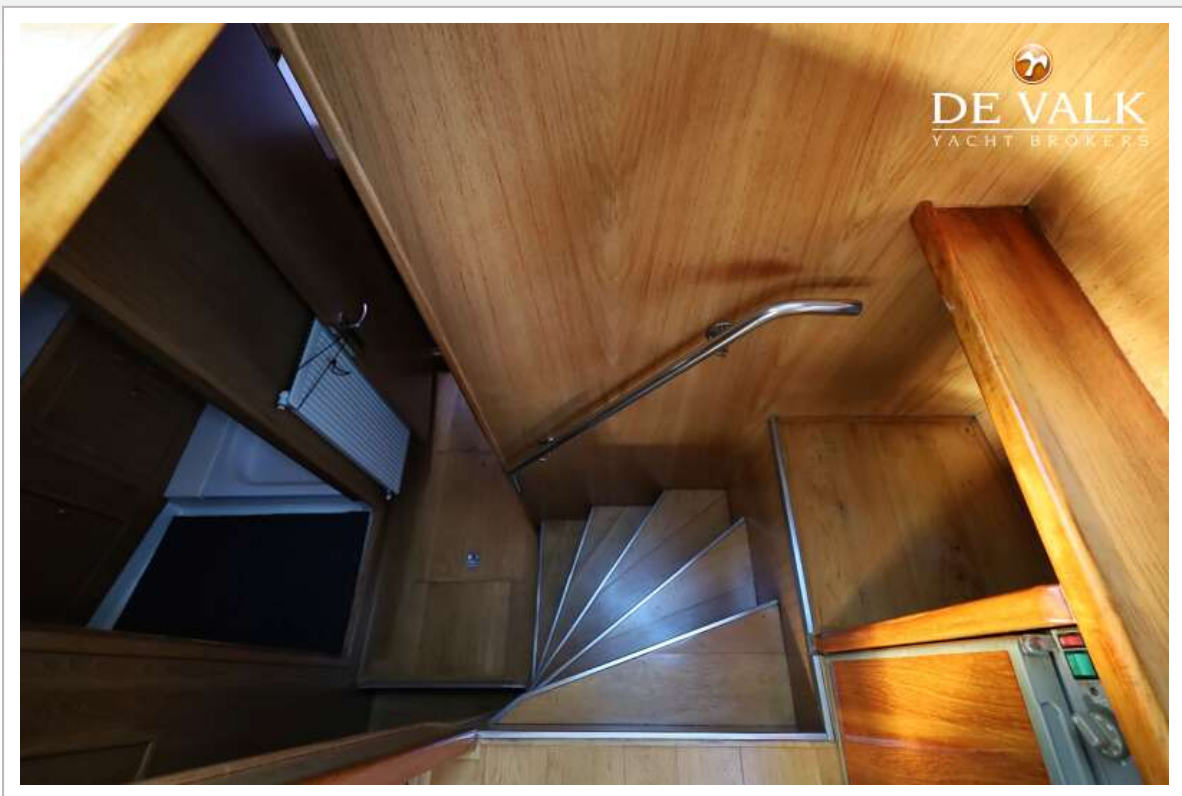
BARKAS 1350 C AK



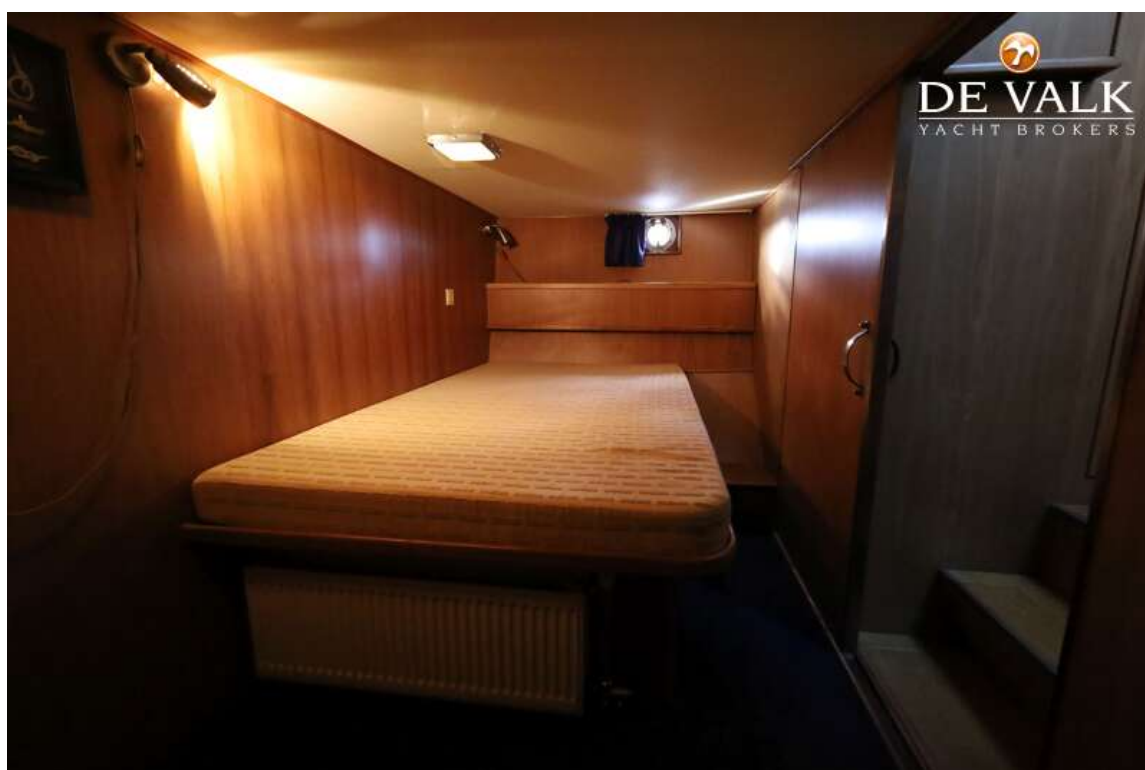
BARKAS 1350 C AK



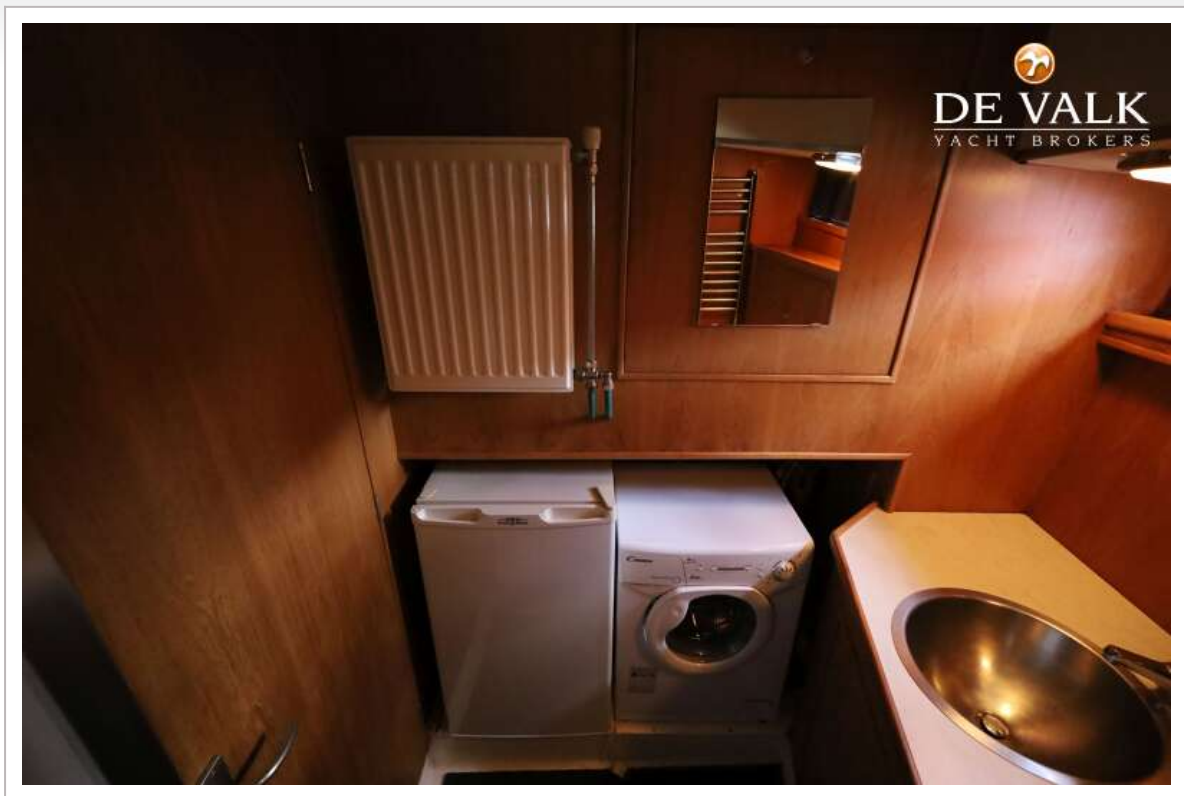
BARKAS 1350 C AK



BARKAS 1350 C AK



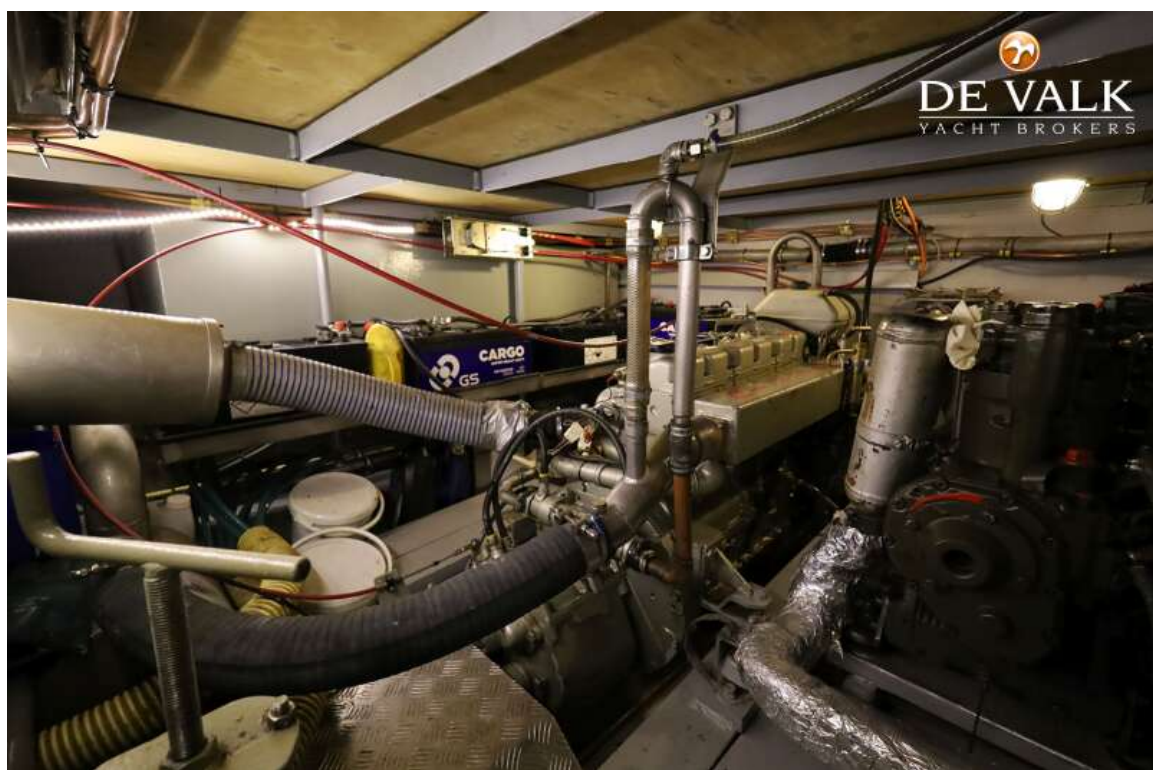
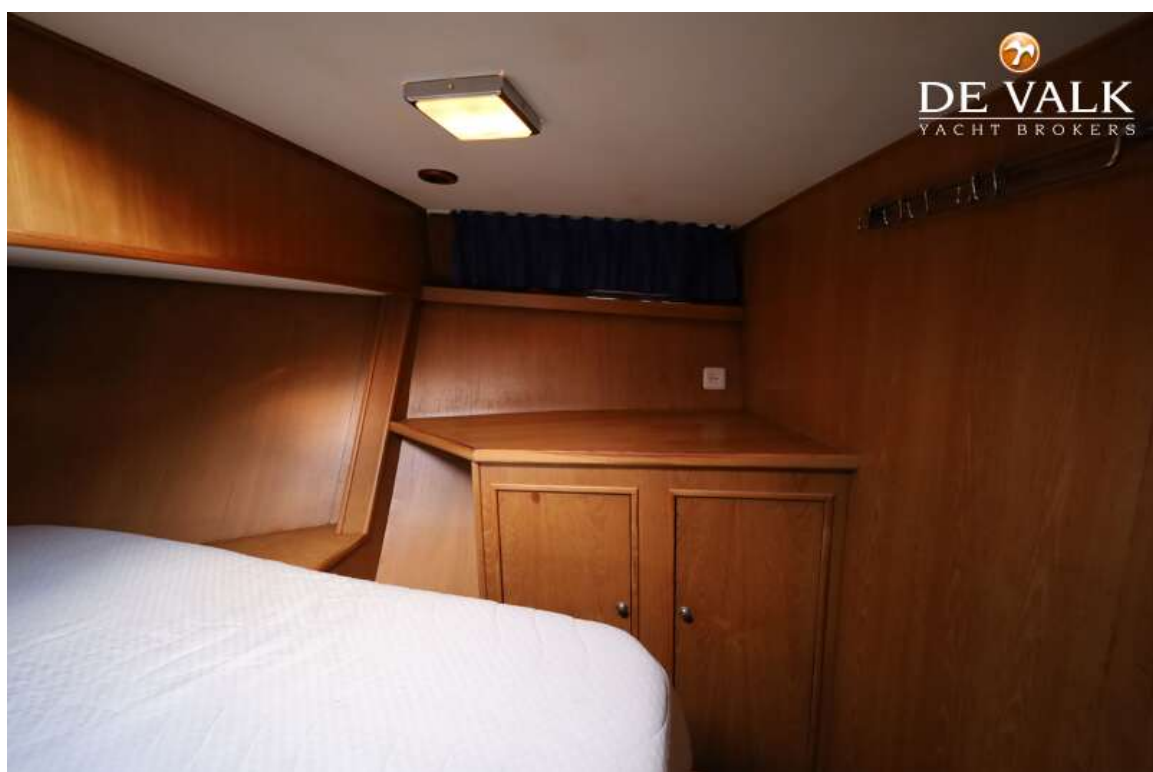
BARKAS 1350 C AK



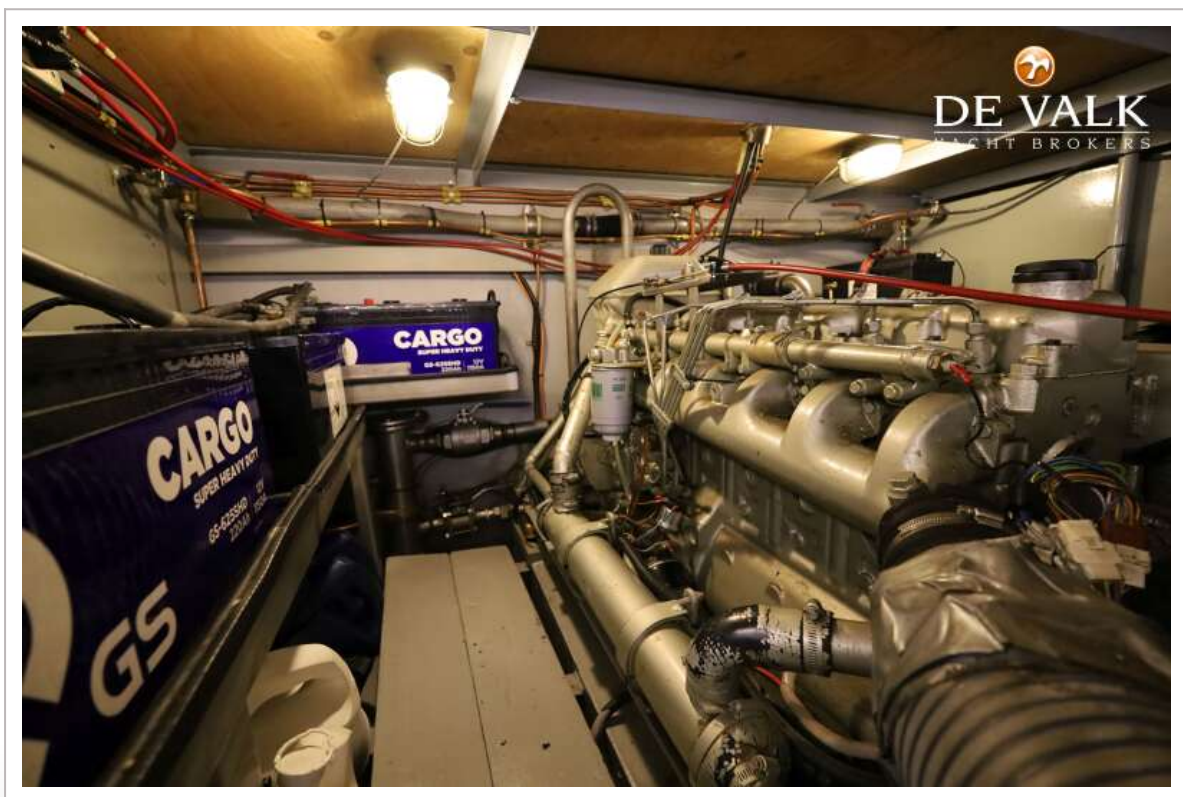
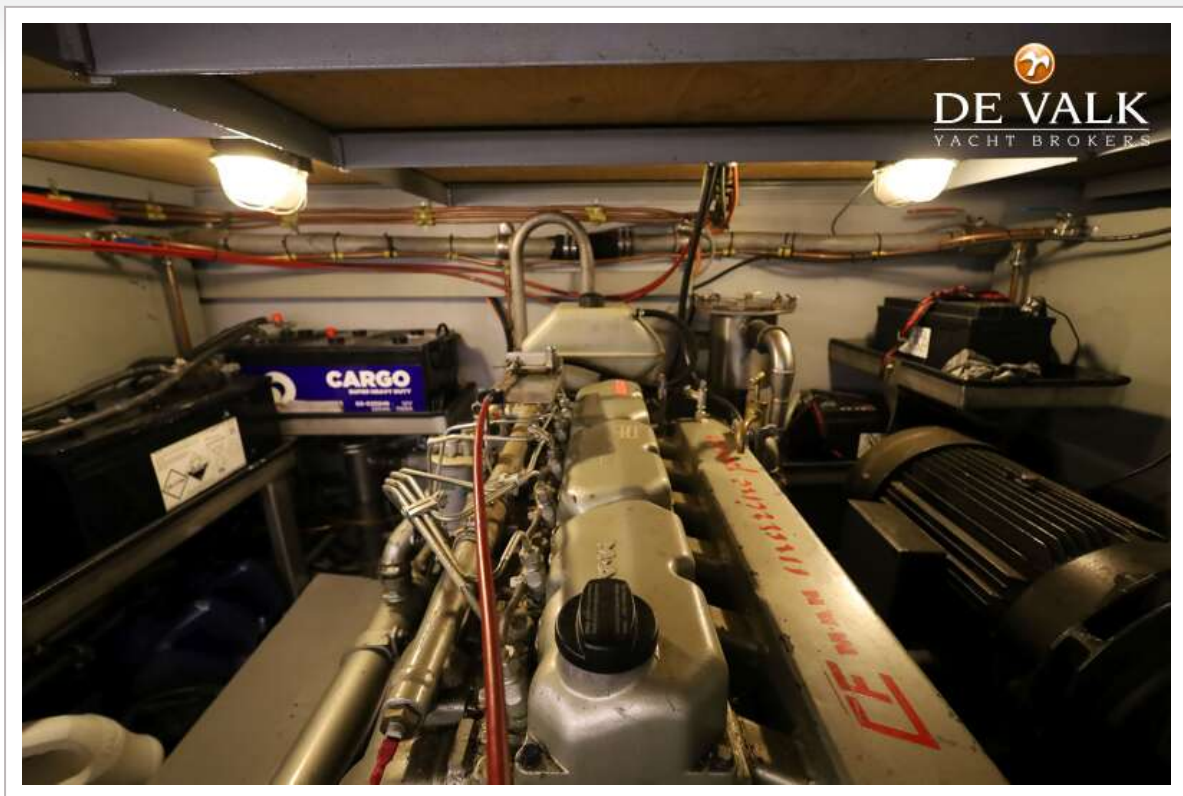
BARKAS 1350 C AK



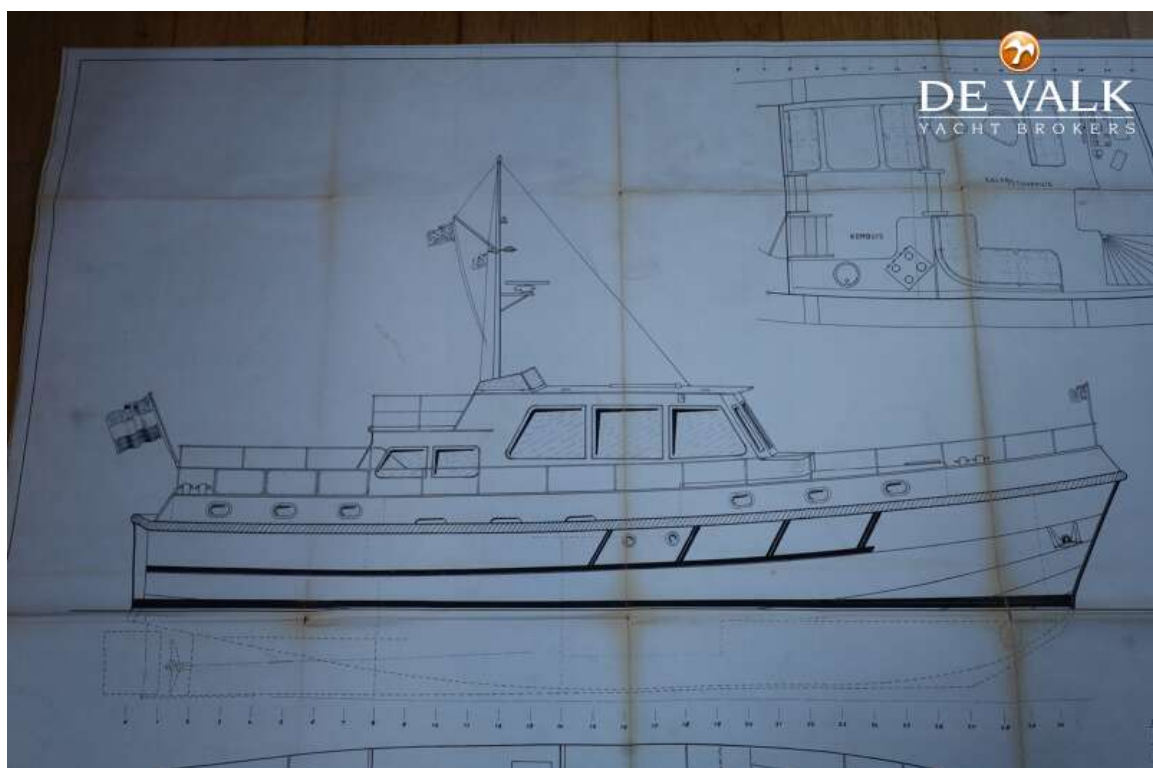
BARKAS 1350 C AK



BARKAS 1350 C AK



BARKAS 1350 C AK



BARKAS 1350 C AK

