



DE VALK
YACHT BROKERS



BARKAS 1350 C AK



DE VALK
YACHT BROKERS

BARKAS 1350 C AK

BROKER'S COMMENTS

"This Barkas 1350 C AK is a unique and sturdy Dutch-built ship designed by L.M. Huitema and largely built by the first and only owner. This unique ship, equipped with a big after deck and outside/inside steering is robustly built and has a tough appearance. The Barkas 1350 C AK is richly equipped and spaciouly laid out. In addition to a spacious saloon and kitchen, this Barkas has four cabins and seven fixed berths. Due to the central heating system, washing machine and lots of storage space there is plenty of comfort which makes her ideal for longer stays on board."

Joris van de Rijt

SPECIFICATIONS

| | | | |
|---------------------|-------------------------|----------------|-----------------------|
| Dimensions | 13,50 x 4,25 x 1,25 (m) | Builder | self-build |
| Built | 1997 | Cabins | 4 |
| Material | Steel | Berths | 7 |
| Engine(s) | 1 x MAN D0826G diesel | Hp/Kw | 145 (hp), 106,72 (kw) |
| Asking price | EUR 130.000 (vat: paid) | Lying | not at sales office |

CONTACT

| | | | |
|---------------------|---|------------------|------------------------|
| Sales office | De Valk Sint Annaland | Telephone | +31 166 601 000 |
| Address | Koelhuisweg 4 4697 RM Sint Annaland The Netherlands | Fax | +31 (0)166 654 267 |
| | | E-mail | sintannaland@devalk.nl |

DISCLAIMER

These particulars are given in good faith as supplied but cannot be guaranteed and cannot be used for contracts.



BARKAS 1350 C AK

GENERAL

| | |
|-----------------------------------|------------------|
| Model | BARKAS 1350 C AK |
| Type | motor yacht |
| LOA (m) | 13,50 |
| LWL (m) | 12,24 |
| Beam (m) | 4,25 |
| Draft (m) | 1,25 |
| Air draft min (m) | 3,40 |
| Headroom (m) | 2,09 |
| Year built | 1997 |
| Launched | 2002 |
| Builder | self-build |
| Country | The Netherlands |
| Designer | L. Huitema |
| Displacement (t) | 20 |
| CE norm | NA |
| Hull material | steel |
| Hull colour | blue |
| Hull shape | hard chine |
| Superstructure material | steel |
| Rubbing strake | rubber |
| Deck material | steel |
| Deck finish | non-skid paint |
| Superstructure deck finish | non-skid paint |
| Cockpit deck finish | non-skid paint |
| Window frame | aluminium Rhigo |
| Window material | tempered glass |
| Deckhatch | 1 x |
| Portholes | 12 x |
| Insulation | glasswool |
| Mast can be lowered | manual |



BARKAS 1350 C AK

| | |
|-------------------------------------|------------------------------------|
| Fuel tank (litre) | steel 2 x 500 |
| Fuel tank 2 (litre) | stainless steel for generator only |
| Level indicator (fuel tank) | gauge glass on tank |
| Freshwater tank (litre) | stainless steel 1000 |
| Level indicator (freshwater) | gauge glass on tank |
| Blackwater tank (litre) | stainless steel 300 |
| Blackwater tank extraction | deck extraction + pump |
| Wheel steering | hydraulic |
| Outside helm position | hydraulic |

ACCOMMODATION

| | |
|--------------------------------|---|
| Cabins | 4 |
| Berths | 7 |
| Interior | teak |
| Floor | wood |
| Aft deck | yes |
| Deck saloon | yes |
| Saloon | yes |
| Headroom saloon (m) | 2,09 |
| Heating | central heating Kabola |
| Aft Cabin | yes |
| Dinette | yes |
| Opening door to cockpit | yes |
| Galley | yes |
| Countertop | stainless steel |
| Sink | stainless steel |
| Cooker | calor gas 4 burner |
| Oven | Smev |
| Microwave | Proline |
| Fridge | 2 x Electrolux with freezer compartment |



BARKAS 1350 C AK

| | |
|------------------------------|-------------------------------|
| Freezer | Everglades |
| Hot water system | geyser on Calor Gas |
| Water pressure system | electrical |
| Owners cabin | double bed Front |
| Bed length (m) | 2,00 x 1,40 |
| Wardrobe | hanging and shelves |
| Bathroom | shared |
| Toilet | shared |
| Toilet system | manual |
| Wash basin | at the toilet + in the shower |
| Shower | shared |
| Guest cabin 1 | double bed Under saloon |
| Bed length (m) | 2,00 x 1,15 |
| Wardrobe | hanging |
| Guest cabin 2 | double bed Aft starboard side |
| Bed length (m) | 1,98 x 1,15 |
| Wardrobe | shelves |
| Guest cabin 3 | single bed Aft port side |
| Bed length (m) | 1,98 x 0,75 |
| Wardrobe | shelves |
| Washing machine | Candy |

MACHINERY

| | |
|-------------------------|-------------|
| No of engines | 1 |
| Make | MAN |
| Type | D0826G |
| HP | 145 |
| kW | 106.72 |
| Fuel | diesel |
| Year installed | 1999 |
| Year of overhaul | approx 1998 |



BARKAS 1350 C AK

| | |
|---------------------------------|----------------------------------|
| Engine hours | 1443 |
| Engine cooling system | freshwater heat exchanger |
| Drive | shaft |
| Engine controls | bowden cable |
| Gearbox | hydraulic |
| Bowthruster | electric Vetus |
| Propeller type | fixed |
| Propeller blades | 5 |
| Propeller shaft material | stainless steel |
| Manual bilge pump | yes |
| Electric bilge pump | yes |
| Electrical installation | 24V / 220V |
| Generator | Siemens |
| Start battery | 2 x (new 2020) |
| Service battery | 4 x (new 2020) |
| Battery charger/inverter | Victron Phoenix combi 24/1800/50 |
| Solar panel | on roof |
| Shorepower | with cable |

NAVIGATION

| | |
|--------------------------|-----------------|
| Depth sounder | Koden |
| VHF | Shipmate RS8300 |
| Plotter | Simrad CP 31 |
| Navigation lights | yes |
| Searchlight | yes |

EQUIPMENT

| | |
|-------------------------|--------------|
| Fixed windscreen | on flybridge |
| Bathing platform | yes |



BARKAS 1350 C AK

| | |
|-----------------------------------|----------------------------|
| Boarding ladder | stainless steel |
| Anchor | CQR Plough stainless steel |
| Anchor chain | yes |
| Windlass | electrical Vetus |
| Capstan | on windlass |
| Deck crane | electric 220V |
| Sea railing | stainless steel |
| Grab rail (superstructure) | stainless steel |
| Railing side opening gates | 2 x |
| Pushpit | yes |
| Pulpit | yes |
| Lifebuoy | yes |
| Fenders | yes |
| Mooring lines | yes |
| Radio-cd player | Sony |
| Cockpit speakers | yes |
| Speakers in salon | yes |
| Fire extinguisher | 3 x (needs survey) |



BARKAS 1350 C AK



BARKAS 1350 C AK



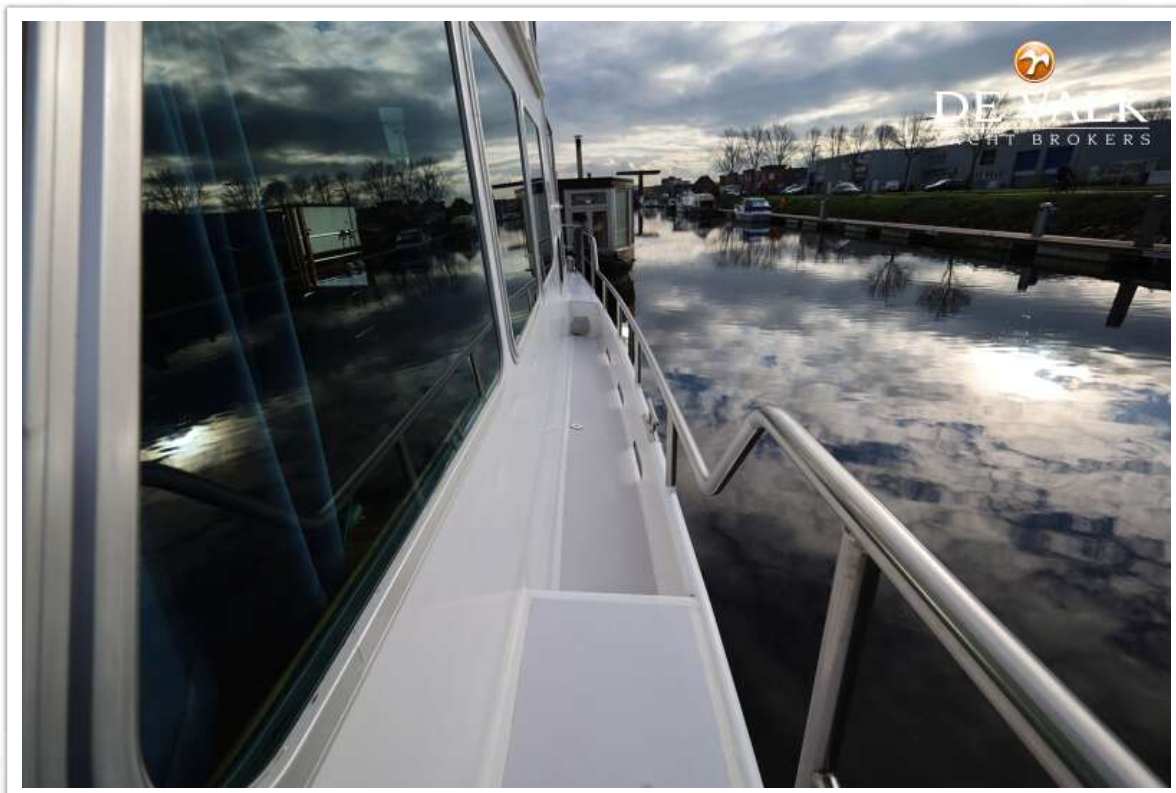
BARKAS 1350 C AK



BARKAS 1350 C AK



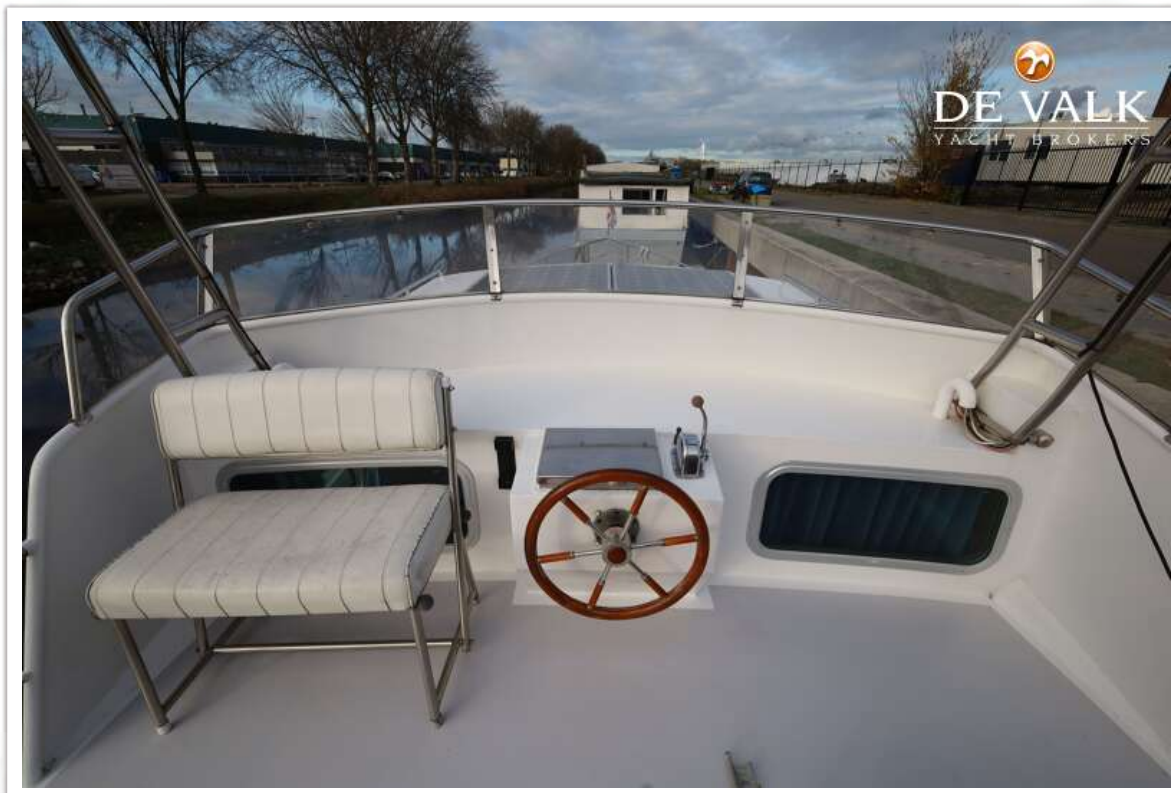
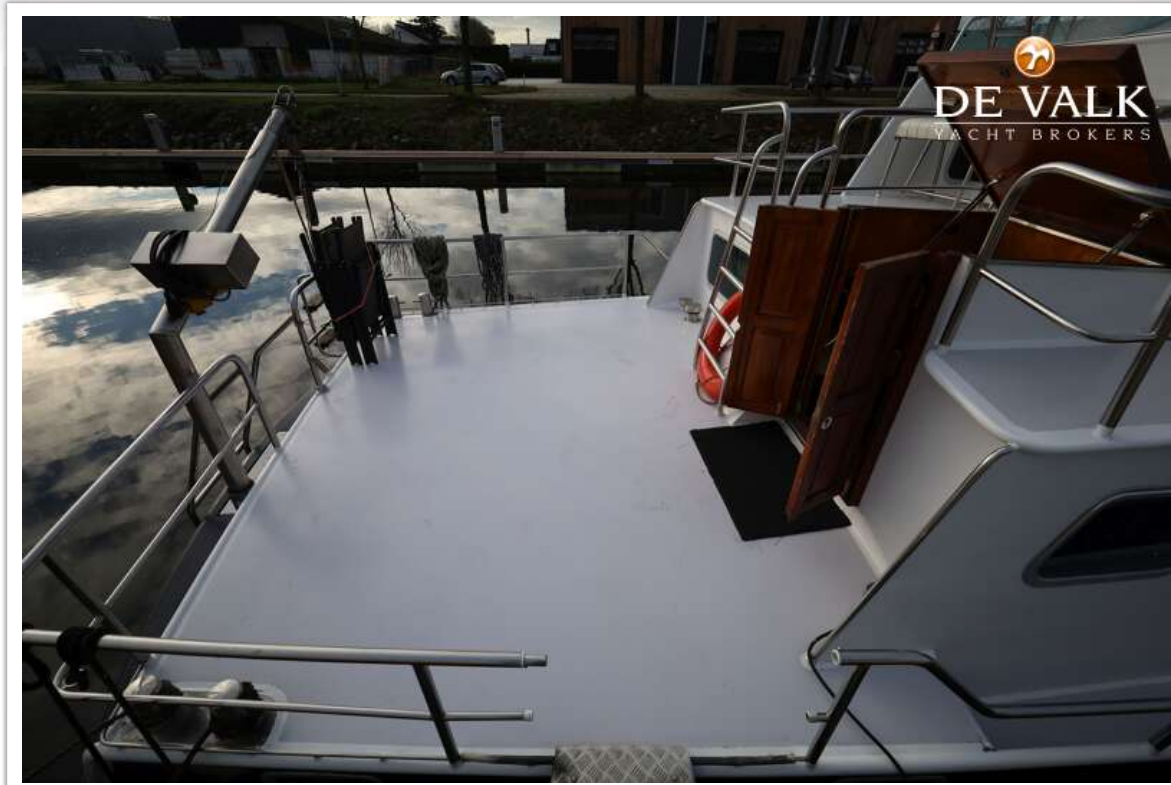
BARKAS 1350 C AK



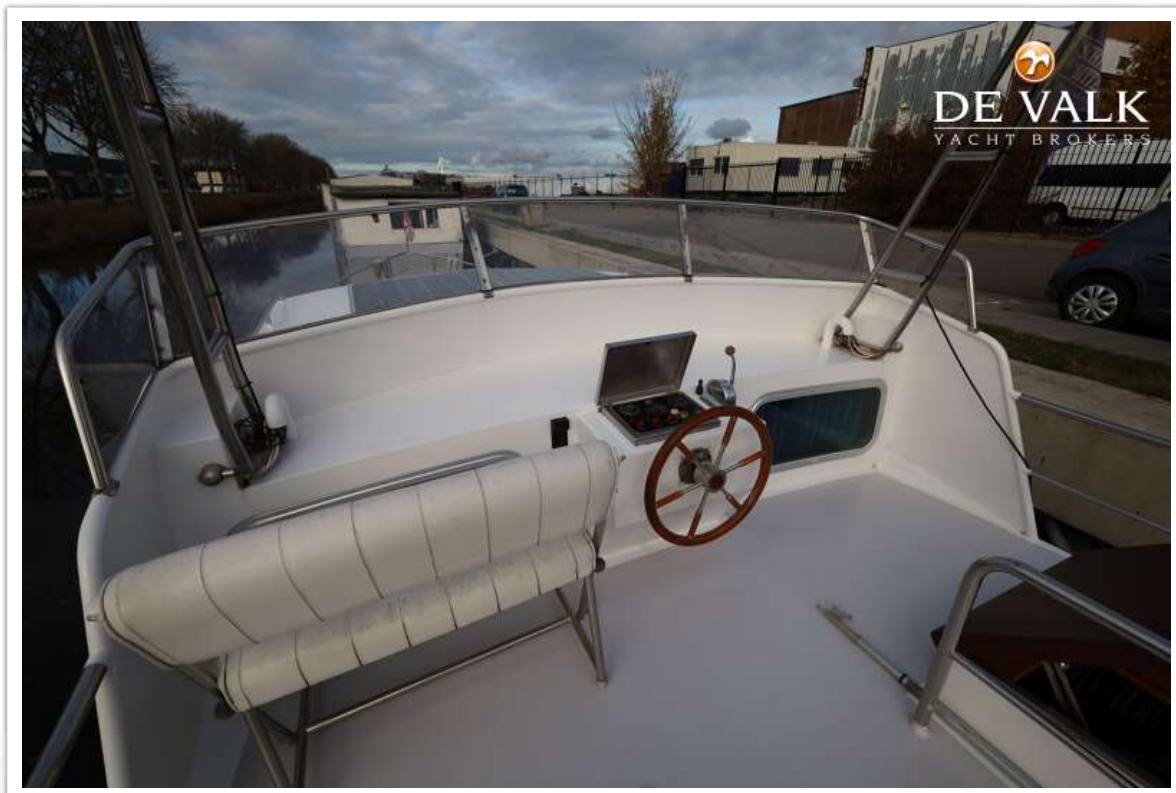
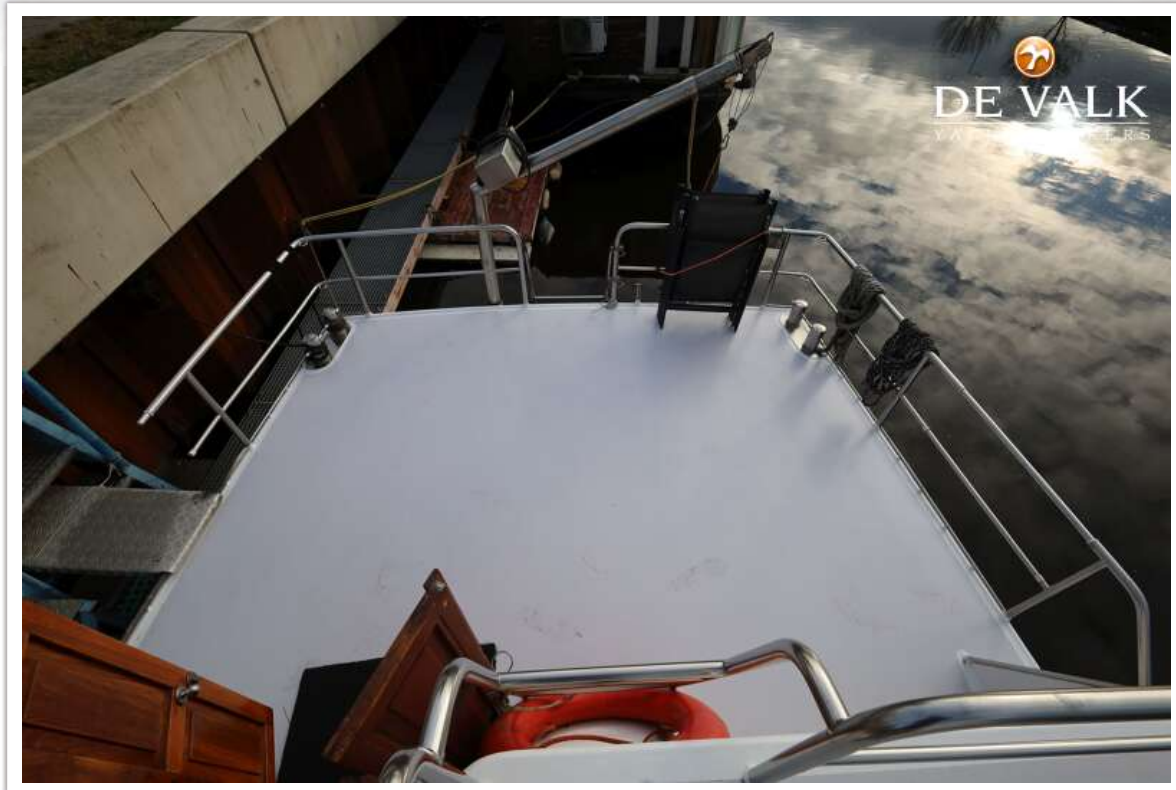
BARKAS 1350 C AK



BARKAS 1350 C AK



BARKAS 1350 C AK



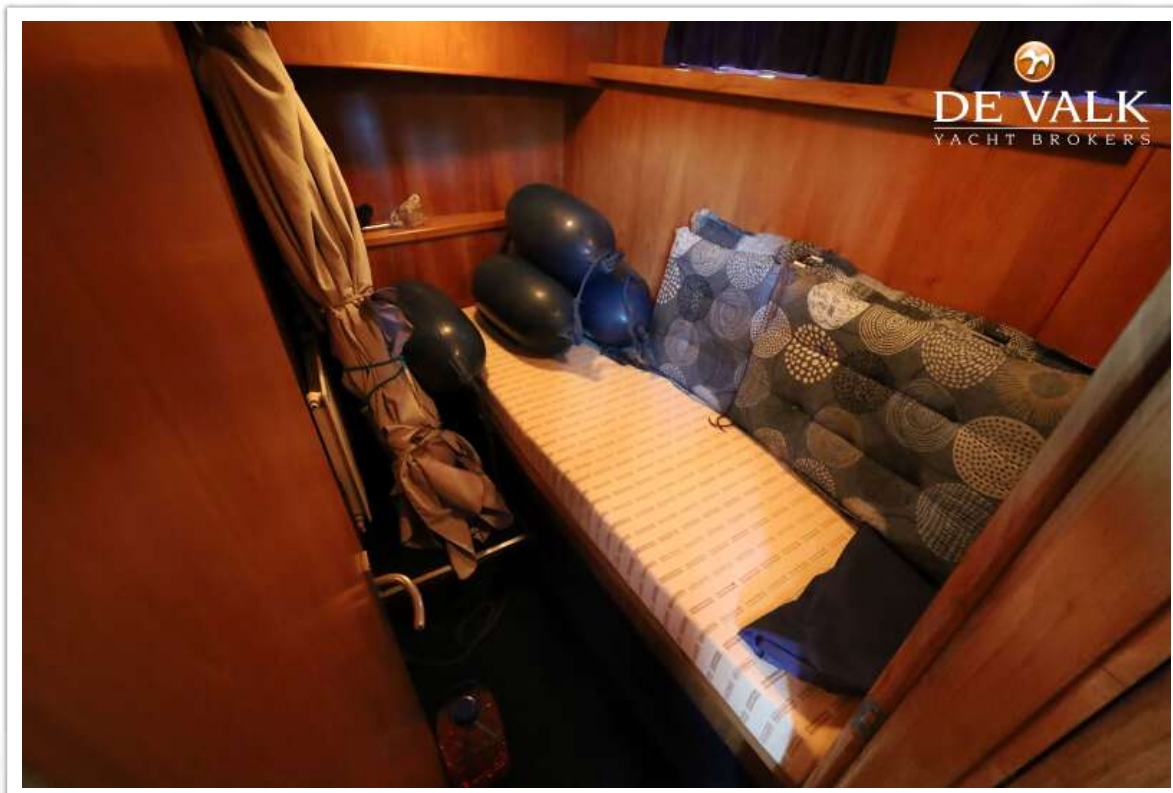
BARKAS 1350 C AK



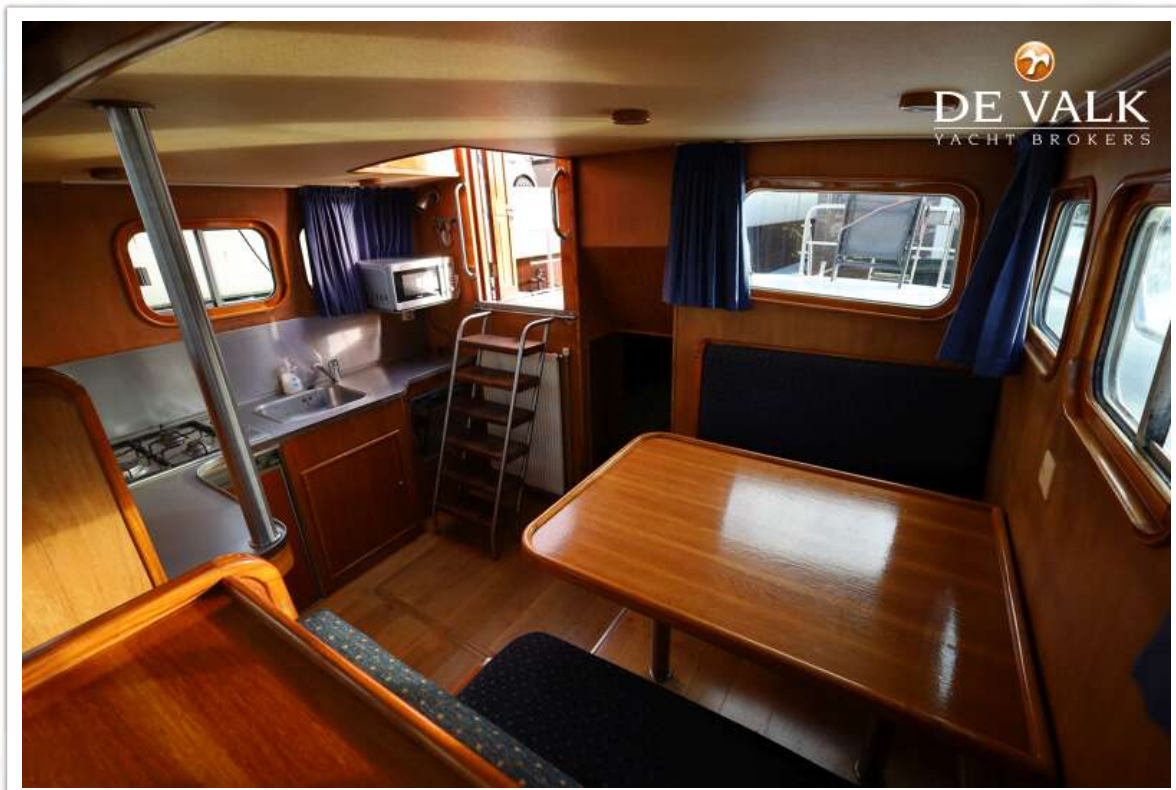
BARKAS 1350 C AK



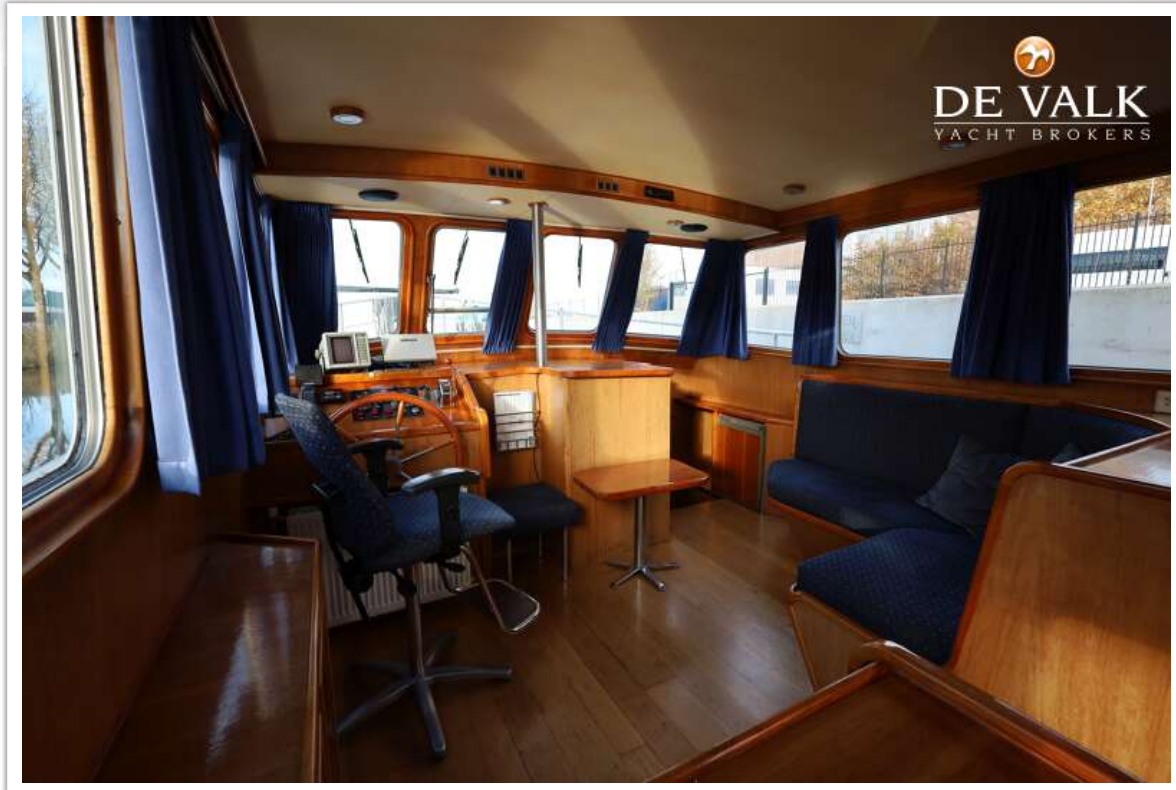
BARKAS 1350 C AK



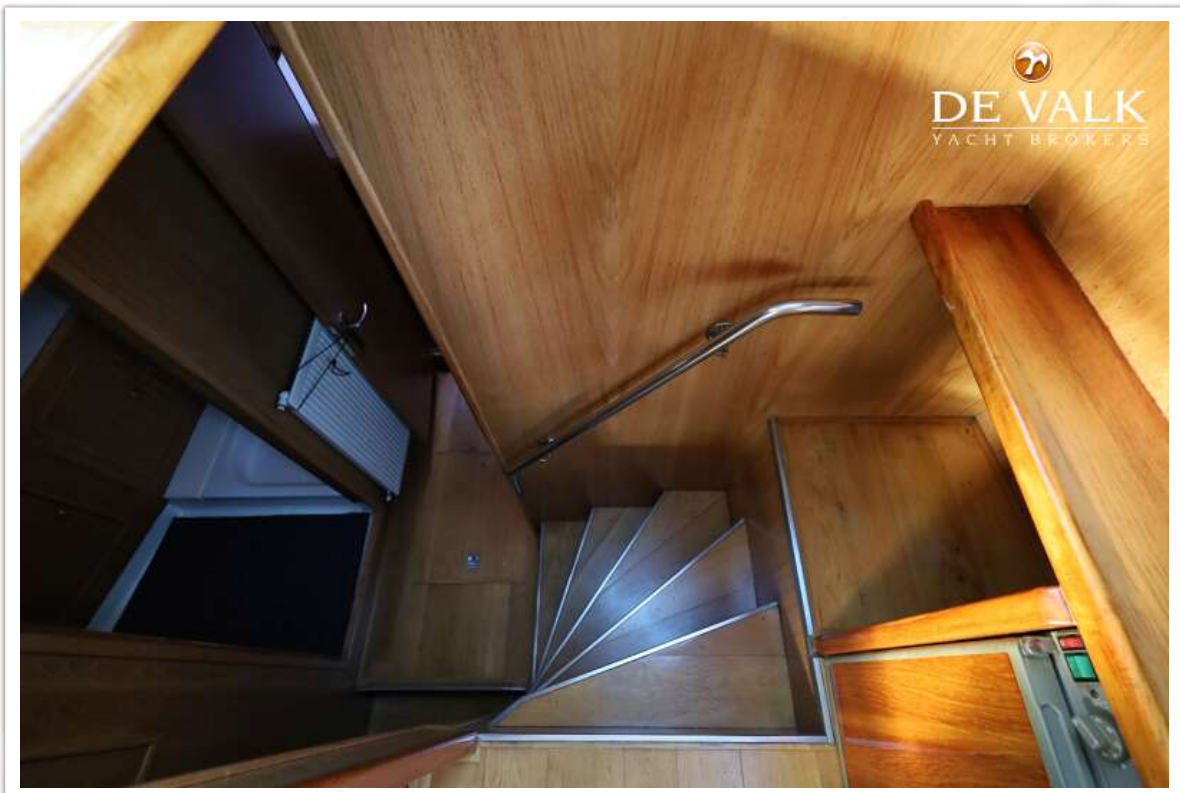
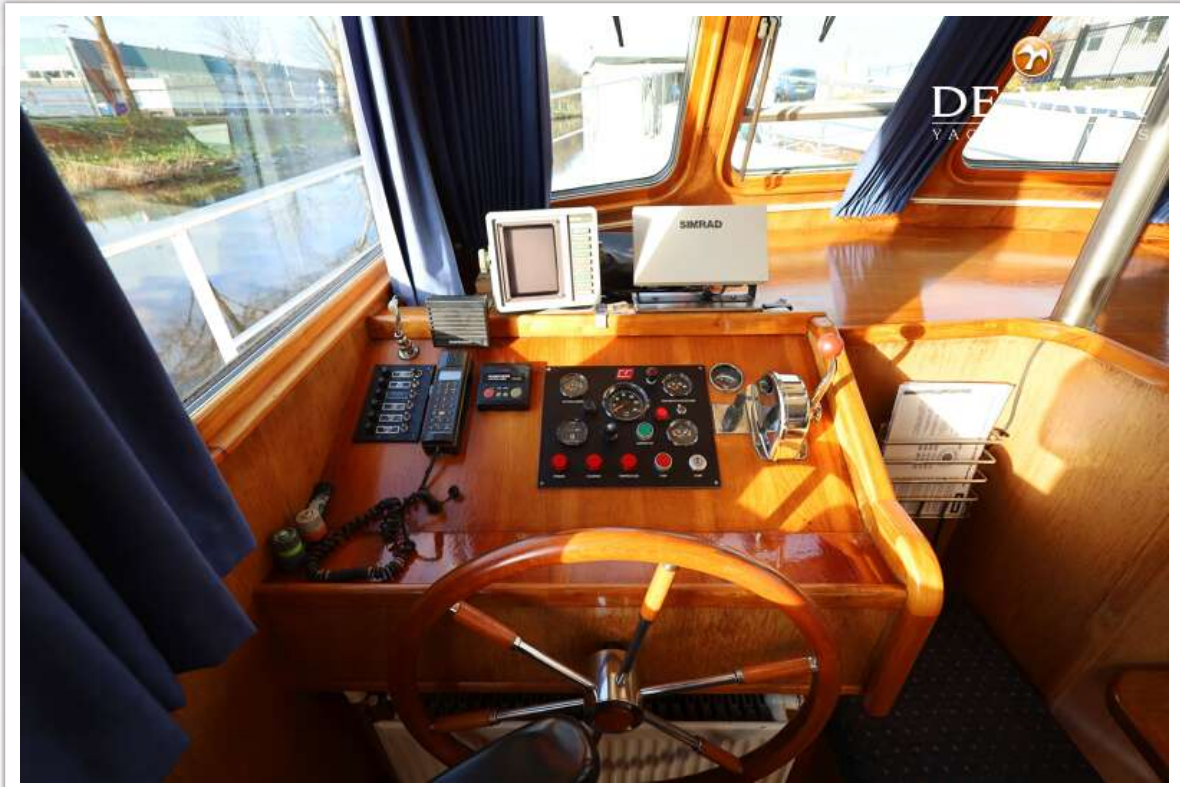
BARKAS 1350 C AK



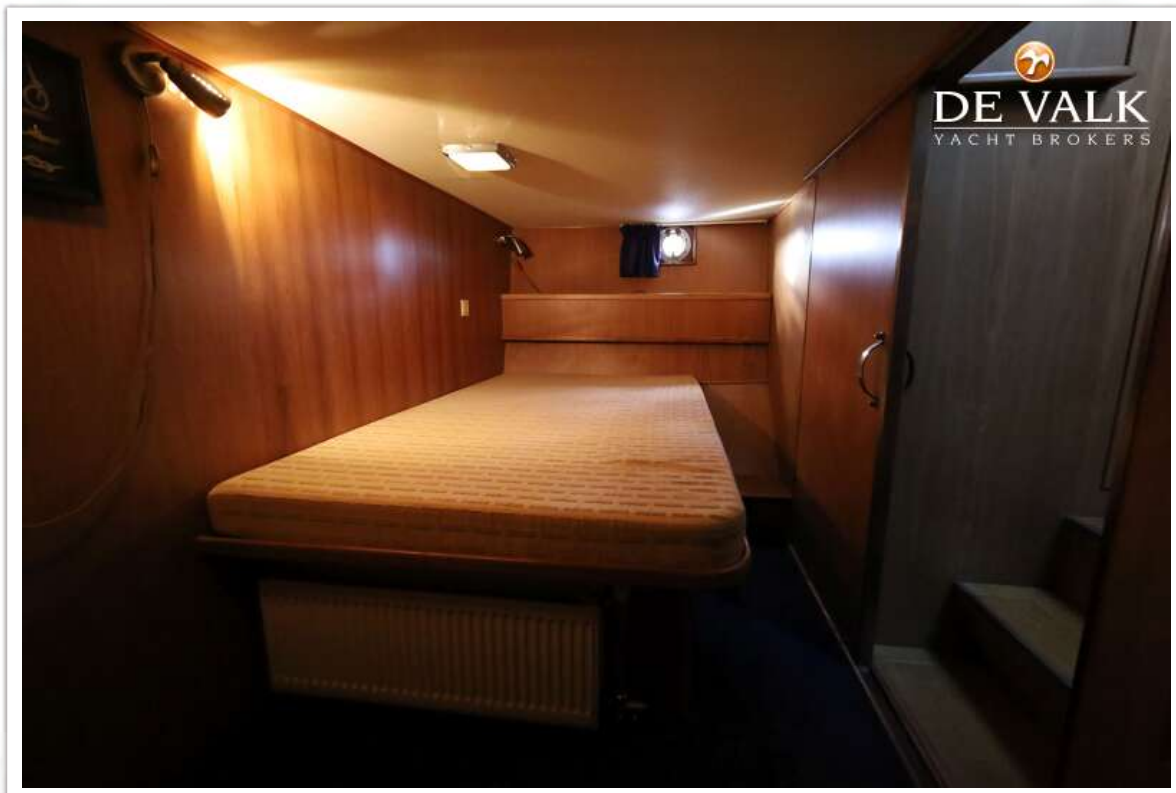
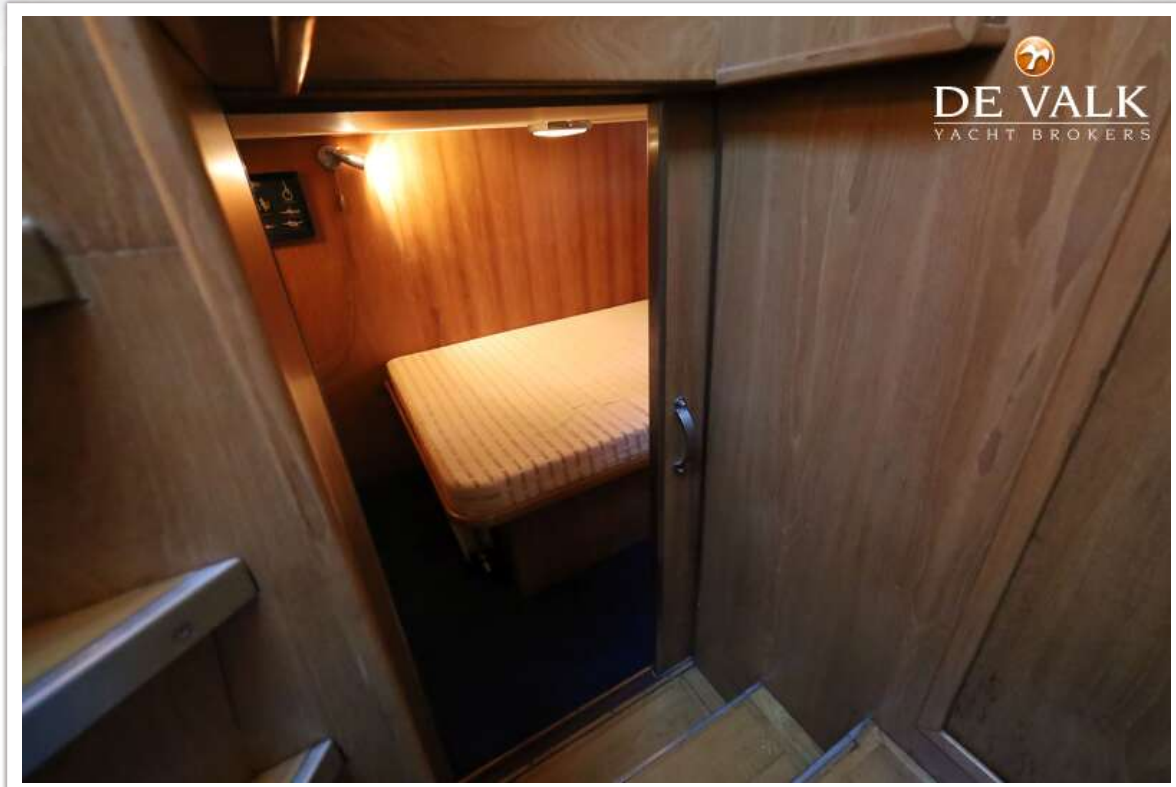
BARKAS 1350 C AK



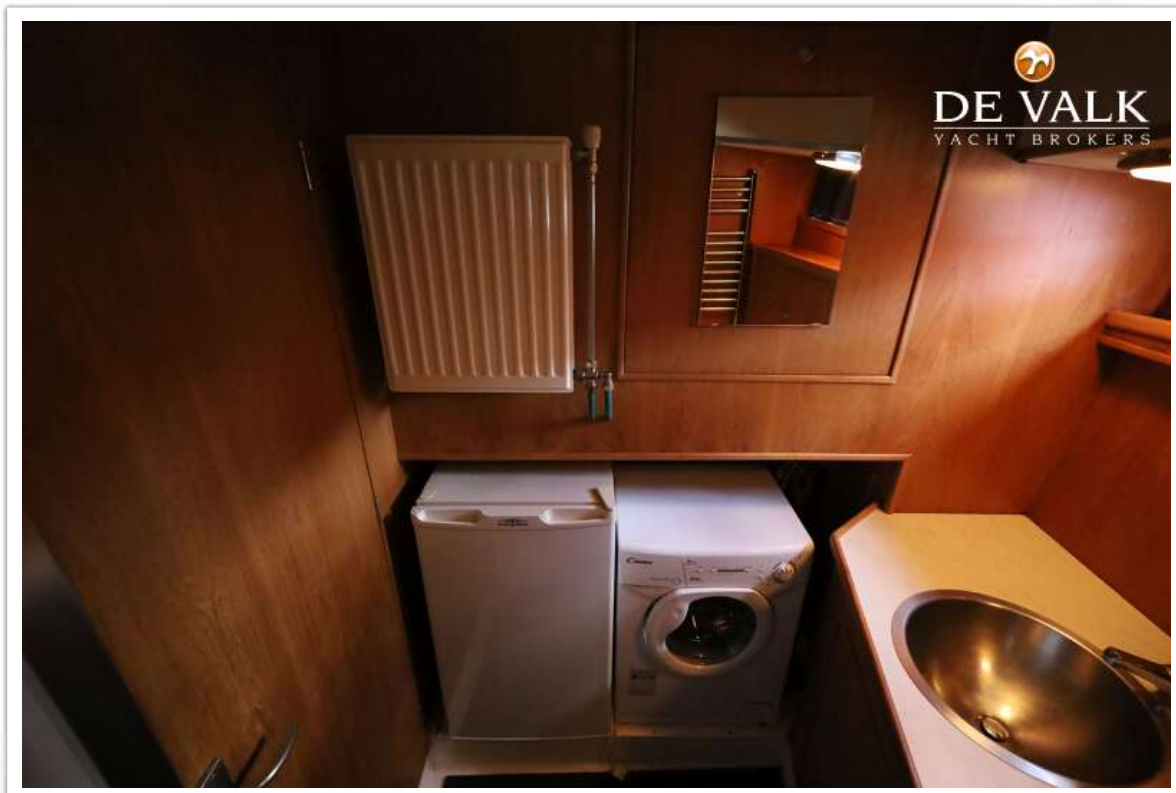
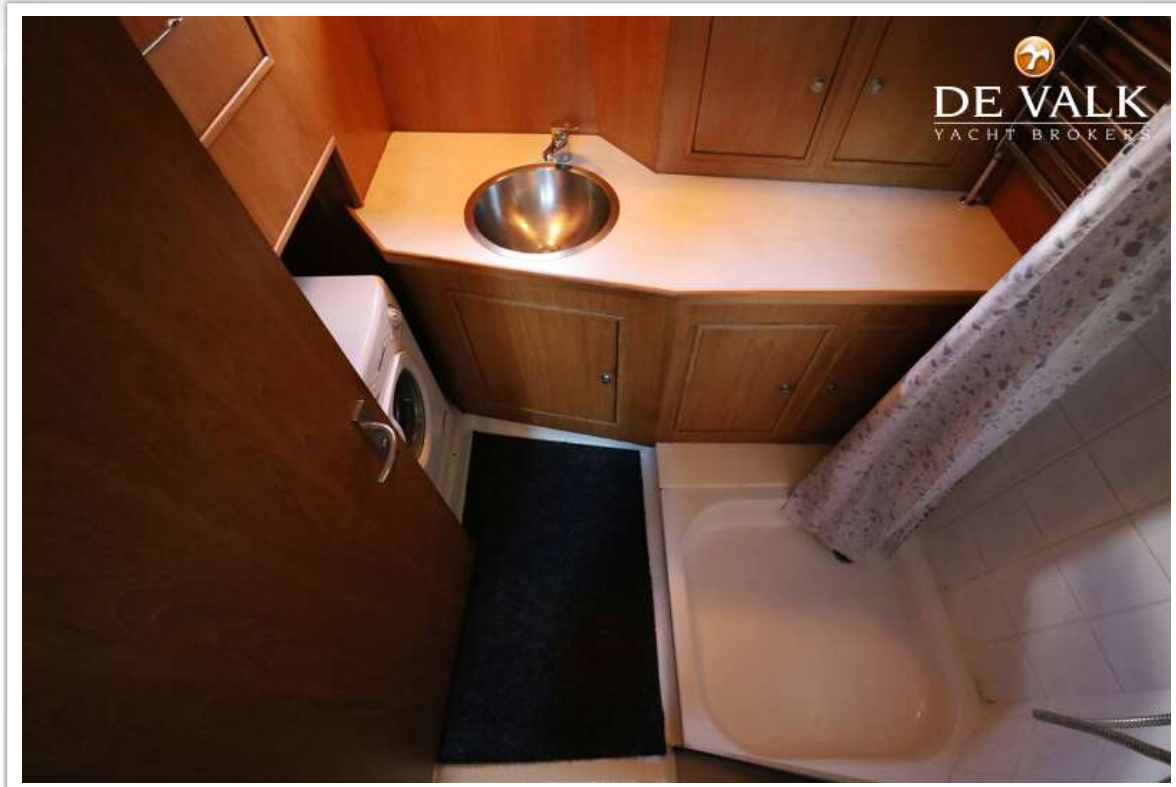
BARKAS 1350 C AK



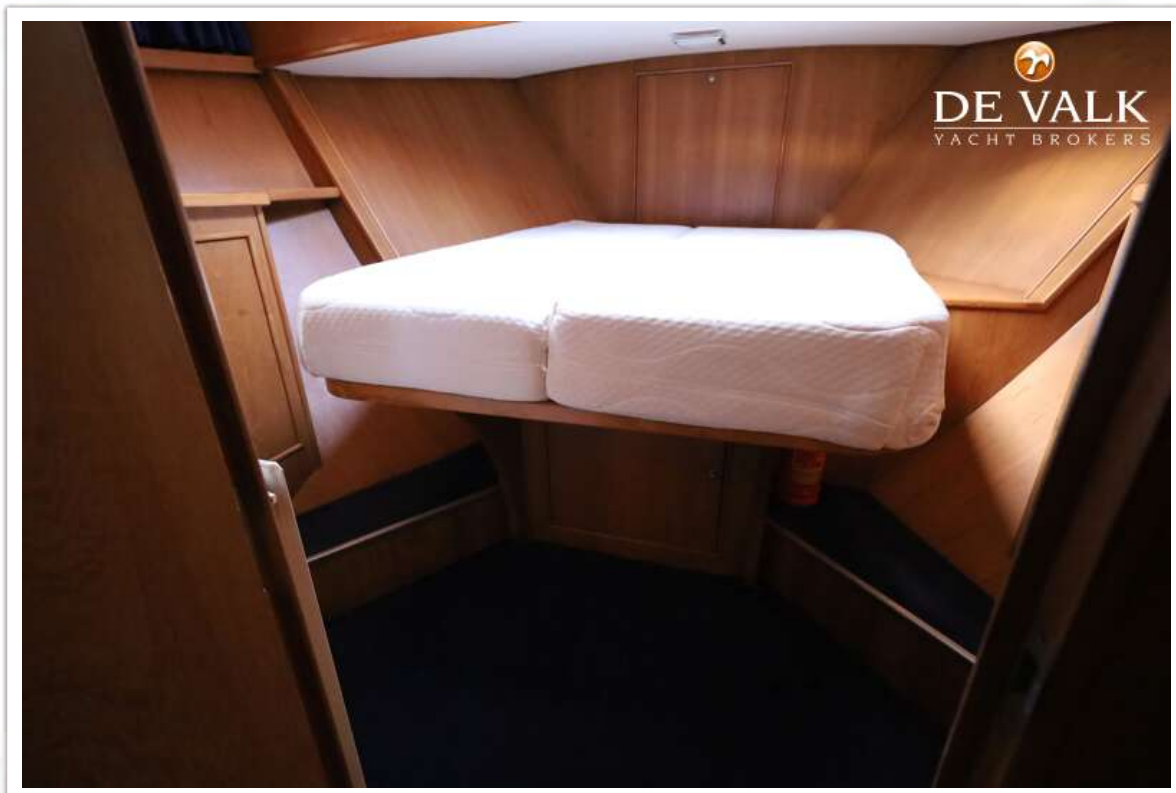
BARKAS 1350 C AK



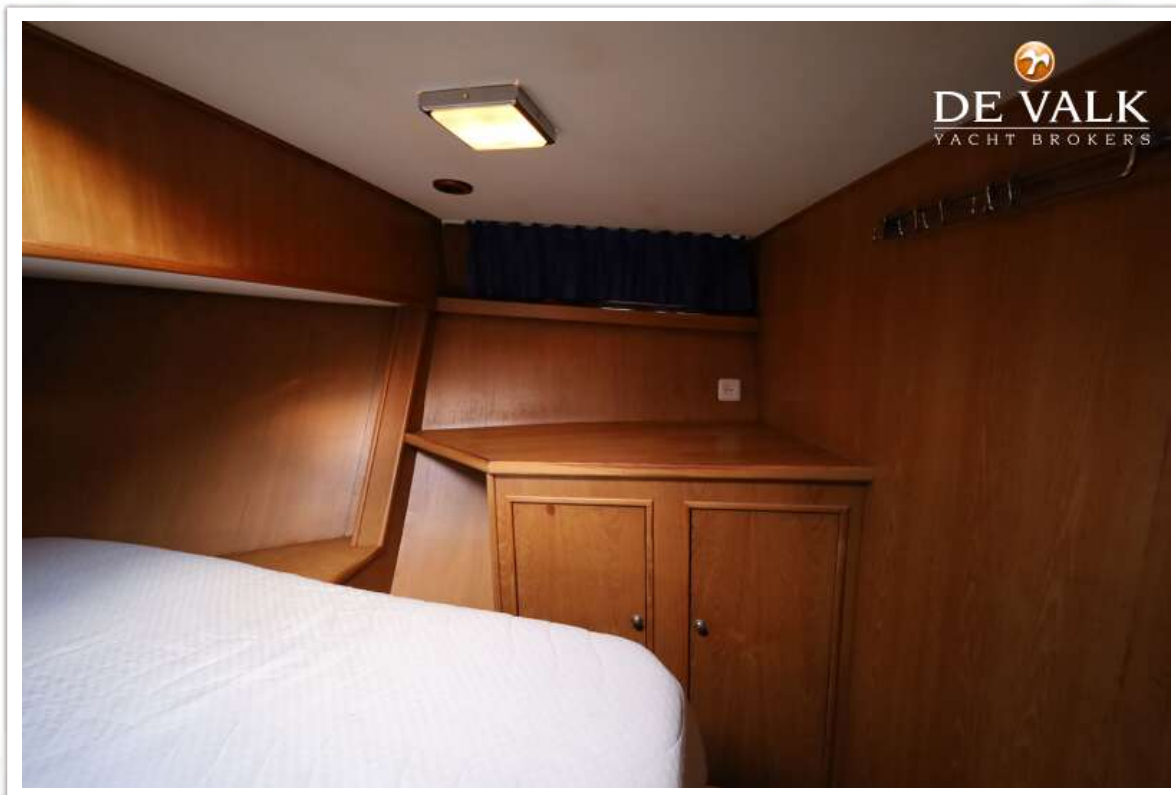
BARKAS 1350 C AK



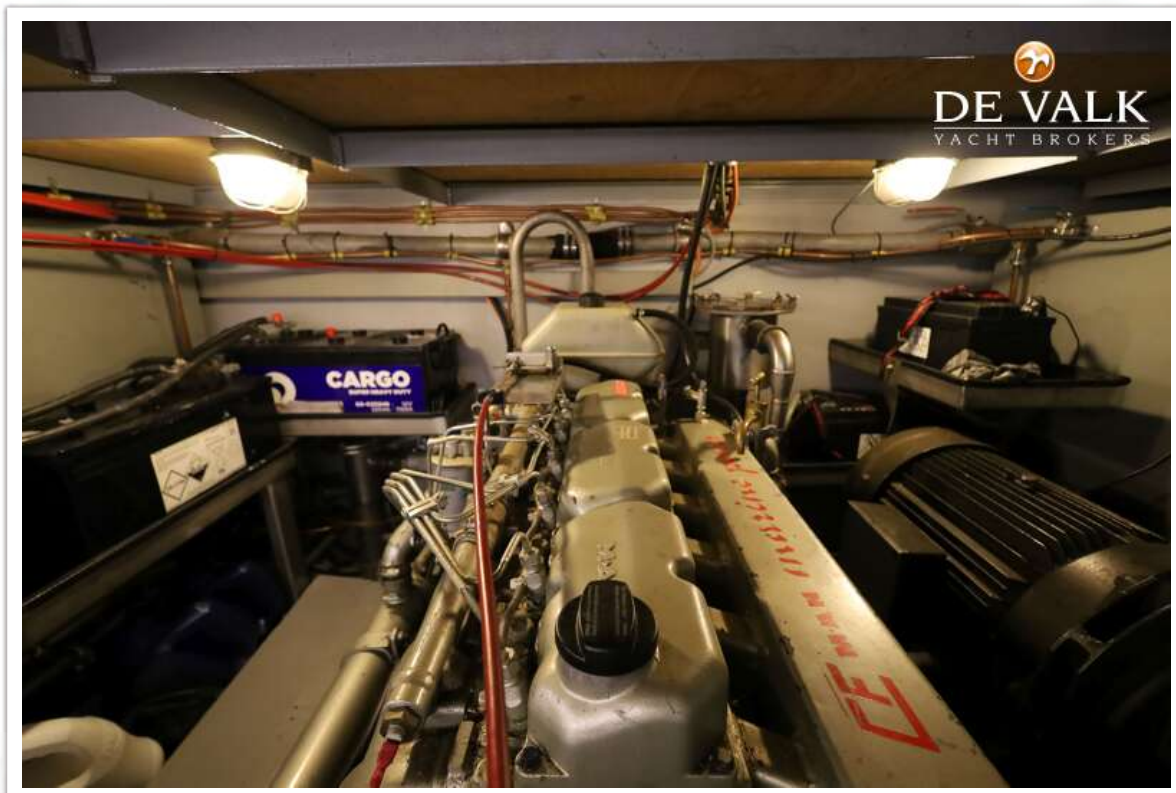
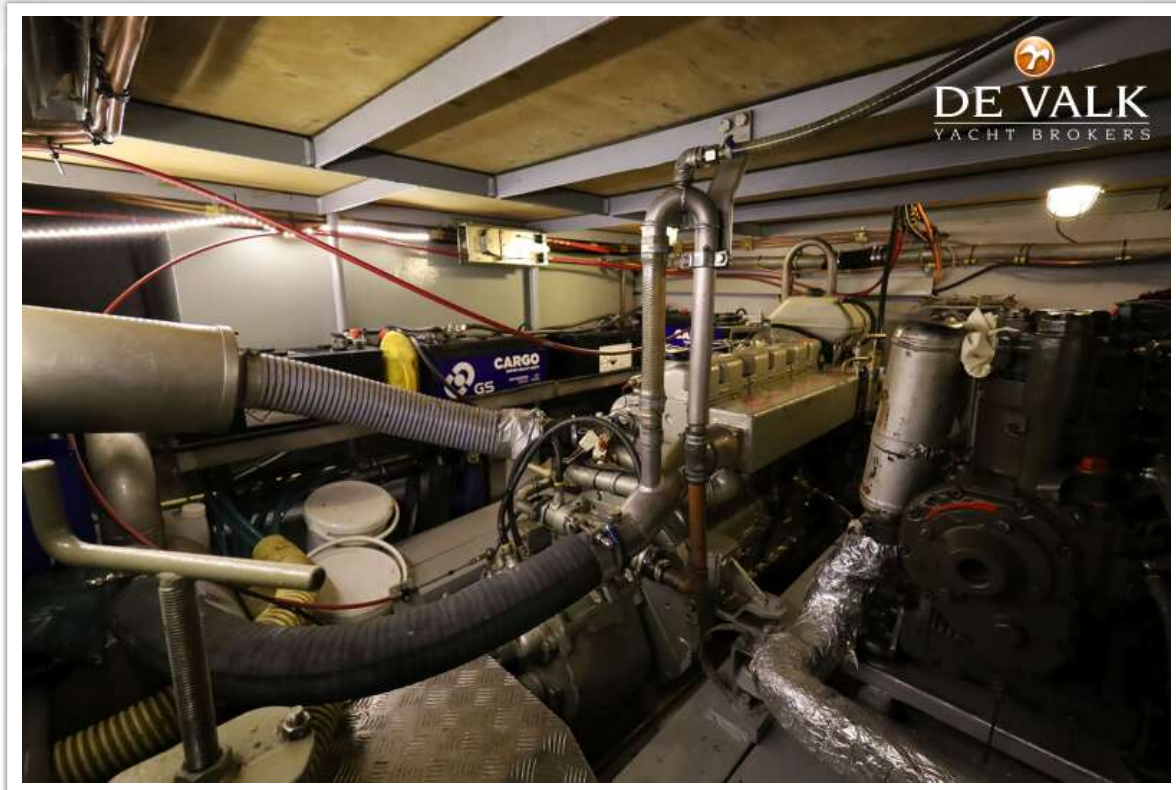
BARKAS 1350 C AK



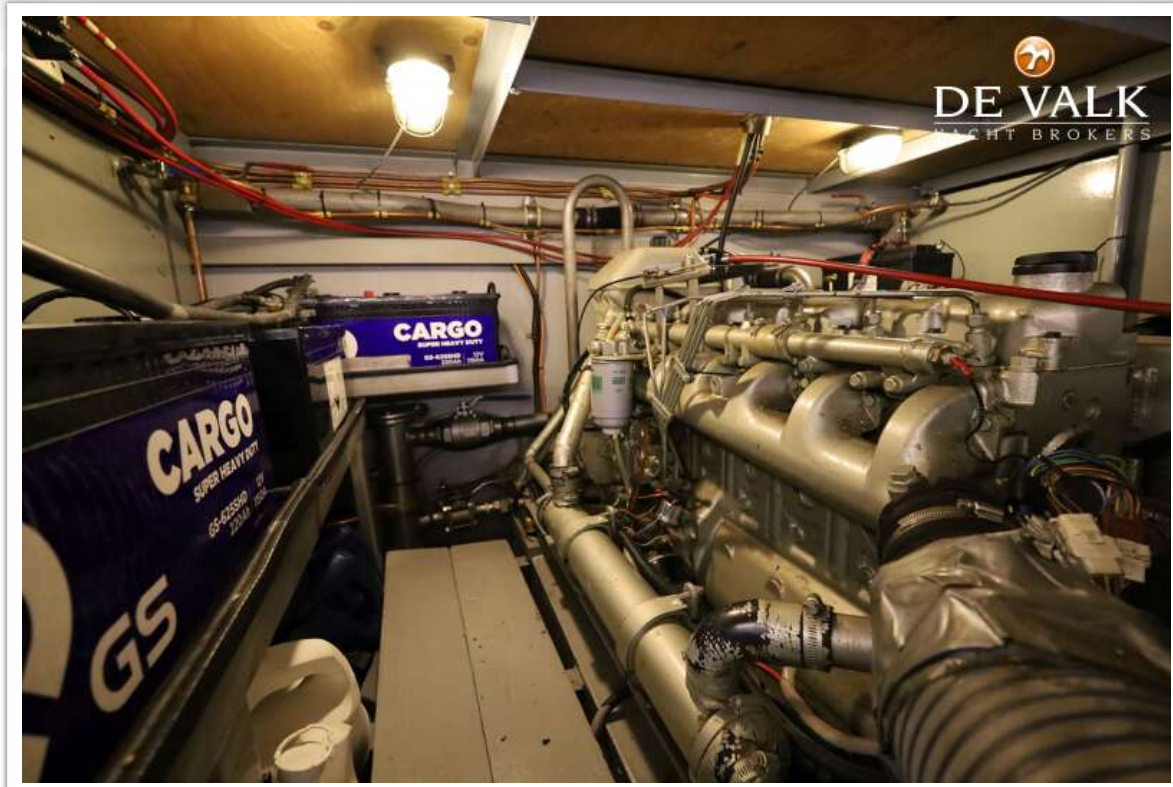
BARKAS 1350 C AK



BARKAS 1350 C AK



BARKAS 1350 C AK



BARKAS 1350 C AK

