



DE VALK
YACHT BROKERS



COAST 34 DOUBLE ENDER



DE VALK
YACHT BROKERS

COAST 34 DOUBLE ENDER

BROKER'S COMMENTS

This Coast 34 is a nice double ender design with a sloop-cutter rig. In line with other models such as the Hans Christian, Pacific Seacraft, Tayana and alike, the Coast 34 should be included in your search. Certainly seaworthy and safe with plenty of interior space. Everything in a nice design with many uses and well equipped for longer trips. The underwater body is more efficient than other comparable classic designs in this range. Not your usual "run of the mill yacht" that you will certainly appreciate. Now on display in Sint Annaland.

Joris van de Rijt

SPECIFICATIONS

Dimensions	10.70 x 3.70 x 1.70 (m)	Builder	Marquis Marine
Built	1986	Cabins	1
Material	GRP	Berths	5
Engine(s)	1 x Volvo Penta D2-40B diesel	Hp/Kw	39.00 (hp), 28.67 (kw)
Asking price	sold (VAT)	Lying	at sales office

CONTACT

Sales office	De Valk Sint Annaland B.V.	Telephone	+31 (0)166 601 000
Address	Koelhuisweg 4 4697 RM Sint Annaland NL	E-mail	sintannaland@devalk.nl

DISCLAIMER

These particulars are given in good faith as supplied but cannot be guaranteed.



COAST 34 DOUBLE ENDER

GENERAL

Model	COAST 34 DOUBLE ENDER
Type	sailing yacht
LOA (m)	10,70
LWL (m)	8,74
Beam (m)	3,70
Draft (m)	1,70
Air draft (m)	16,40
Headroom (m)	1,93
Year built	1986
Builder	Marquis Marine
Country	Canada
Designer	Graham Shannon / Bruce Roberts
Displacement (t)	8
Ballast (tonnes)	lead in GRP Approx. 2,9
Hull material	GRP
Hull colour	white
Hull shape	round-bilged Semi S
Keel type	fin keel
Superstructure material	GRP
Rubbing strake	wood
Deck material	GRP
Deck finish	non-skid moulded in
Cockpit deck finish	teak
Dorades	plus 2 prepared 2 x
Portholes	aluminium
Fuel tank (litre)	stainless steel 2 x 120
Freshwater tank (litre)	stainless steel 1 x 350
Blackwater tank (litre)	polyethylene 1 x 60
Blackwater tank extraction	deck extraction + uw line
Wheel steering	mechanical Cinkel



Emergency tiller yes

ACCOMMODATION

Cabins	1
Berths	5
Interior	teak
Floor	teak
Saloon	yes
Headroom saloon (m)	1,93 - 1,85
Heating	diesel ducted hot air Eberspächer (2007)
Heating 2	stove diesel (small defect)
Chart table	yes
Dinette	with foldable table
Galley	yes
Countertop	plastic
Sink	stainless steel
Cooker	calor gas Force 10 3-burner
Oven	Force 10
Microwave	(2020)
Fridge	(150 ltr) Weaco 12v
Hot water system	220V + engine Quick 25 ltr (2012)
Water pressure system	electrical
Owners cabin	v-bed
Bed length (m)	2,05 x 2,00
Wardrobe	hanging/drawers/shelves
Bathroom	shared I
Toilet	shared
Toilet system	manual
Wash basin	in the bathroom
Shower	shared
Guest cabin 1	double bed



COAST 34 DOUBLE ENDER

Bed length (m) 2,05 x 1,25

MACHINERY

No of engines	1
Make	Volvo Penta
Type	D2-40B
HP	39
kW	28,67
Fuel	diesel
Year installed	2006
Maximum speed (kn)	7
Cruising speed (kn)	5,5
Consumption (l/hr)	3,5
Engine hours	1820
Engine cooling system	freshwater heat exchanger
Drive	shaft
Engine controls	bowden cable
Gearbox	mechanical Volvo Penta (2006)
Exhaust	watercooled
Propeller type	fixed
Propeller blades	3
Propeller shaft material	stainless steel (new shaft-tube 2020)
Shaft lubrication	water
Manual bilge pump	yes
Electrical installation	(partially new 2016) 12/220v
Start battery	1 x 55ah (2011)
Service battery	3 x 110ah (2018)
Battery monitor	Mastervolt
Battery charger	Mastervolt
Inverter	Mastervold 12v-1200 watt (2020)
Solar panel	Victron charge-controller 3 x 130 watt (2015)



Shorepower	with cable
Extra info	watercooling pump and startermotor new 2019-2020)

NAVIGATION

Compass	Ritchie
Electric compass	via autopilot
Depth sounder/log	Furuno Fi-50
Windset	Furuno Fi-50
Fish finder	Navman Fish450
VHF	(extra handset defect) Standard Horizon GX2100
Autopilot	(hydraulic drive new 2015) Simrad AP22
Radar	Raymarine RD 418HD (2017)
GPS	Furuno GP-32
Radar/GPS/plotter	Raymarine (2017)
Navtex	Furuno NX-300
AIS receiver	Raymarine
Navigation lights	yes

EQUIPMENT

Sprayhood	(2014)
Bimini	(2014)
Cockpit table	yes
Boarding ladder	stainless steel
Anchor	Rocna 25kg (2017)
Anchor chain	100 mtr (2017)
Windlass	electrical Vetus 1000 watt (new motor 2017)
Sea railing	aluminum (new wires 2020)
Grab rail (superstructure)	teak
Railing side opening gates	2 x
Pushpit	solid stainless steel
Pulpit	solid stainless steel



COAST 34 DOUBLE ENDER

Life raft	container RFD
Life raft (pers)	4 pers
Last life raft survey	expired 2017 (2014)
Lifebuoy	yes
Rope cutter	on prop-shaft
Radar reflector	Echomax
Fenders	(2021)
Mooring lines	yes
Radio-cd player	(defect)
Surround Sound System	Bose
Cockpit speakers	(defect)
Speakers in salon	yes
Clock - barometer	yes

RIGGING

Rigging	sloop-cutter
Standing rigging	wire (new 2014)
Brand mast	C&C
Material mast	aluminium coated
Spreaders	2 x set
Mainsail cover	+ Lazy Bag (2014)
Battcars	Selden RCB
Fully battened mainsail	3 x reef UB Sails (2014)
Genoa	with foamstrips UB Sails (2014)
Genoa furler	Goiot P40
Cutter furler	Furlex 200S
Staysail	+ UV strip 2021 Van Vliet Sails (2004)
Reefing System	quick-one-line-reefing (Selden boom)
Boomvang	Selden Rodkicker
Genoa sheetwinches	2 x Maxell 44ST
Reefing winch	1 x Harken 16



COAST 34 DOUBLE ENDER

Multifunctional winches

Spi-pole

halyard/sheet winches 2 x Maxwell 22ST

aluminium (stowed on mast)



COAST 34 DOUBLE ENDER



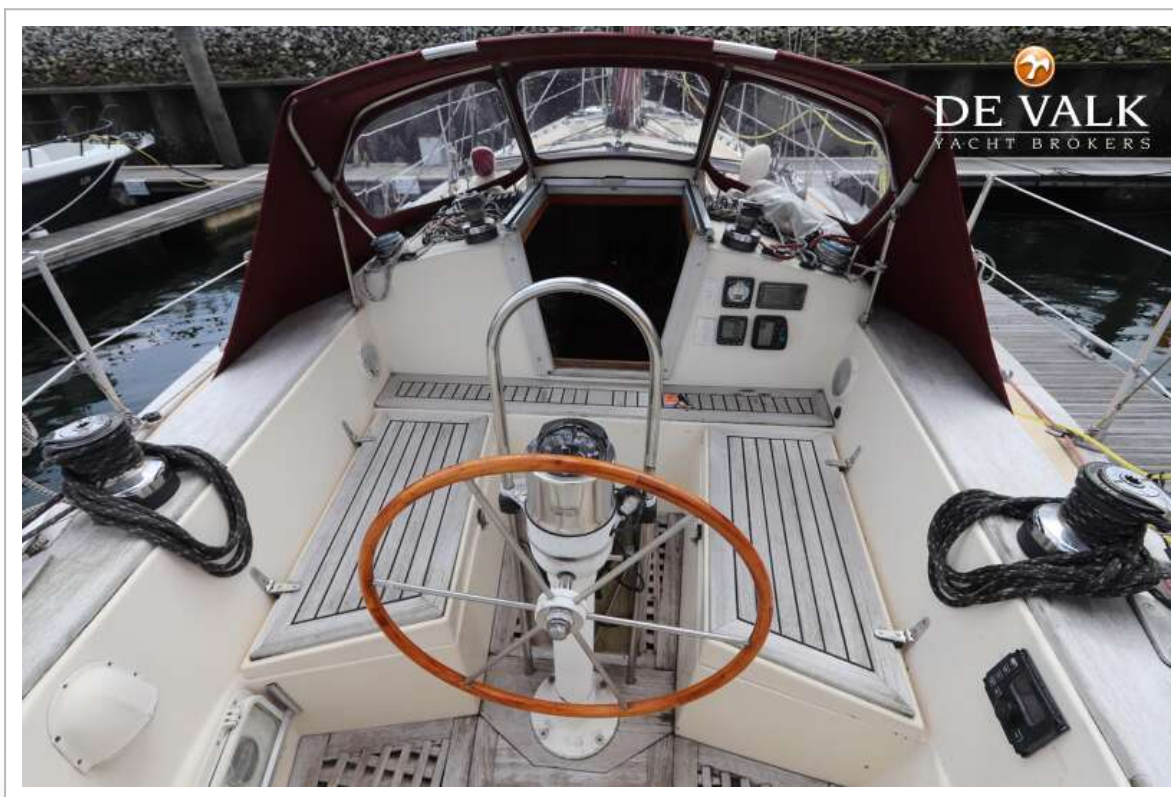
COAST 34 DOUBLE ENDER



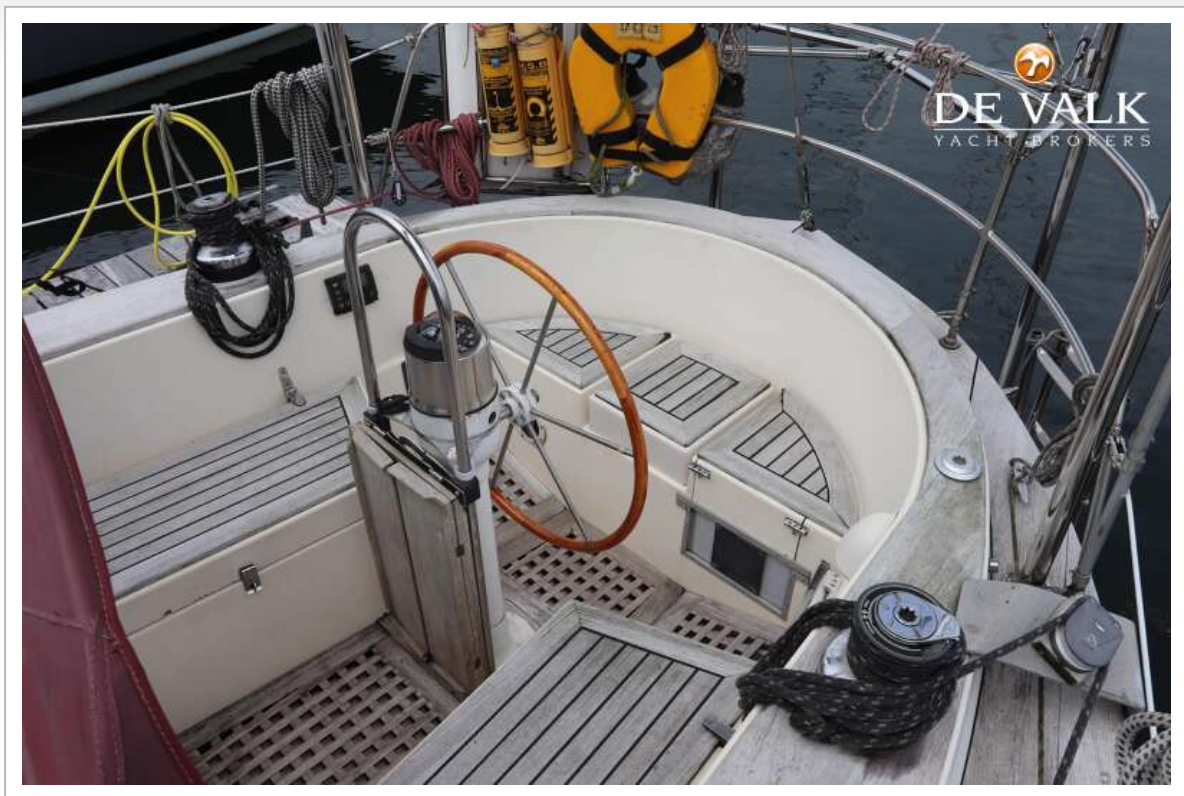
COAST 34 DOUBLE ENDER



COAST 34 DOUBLE ENDER



COAST 34 DOUBLE ENDER



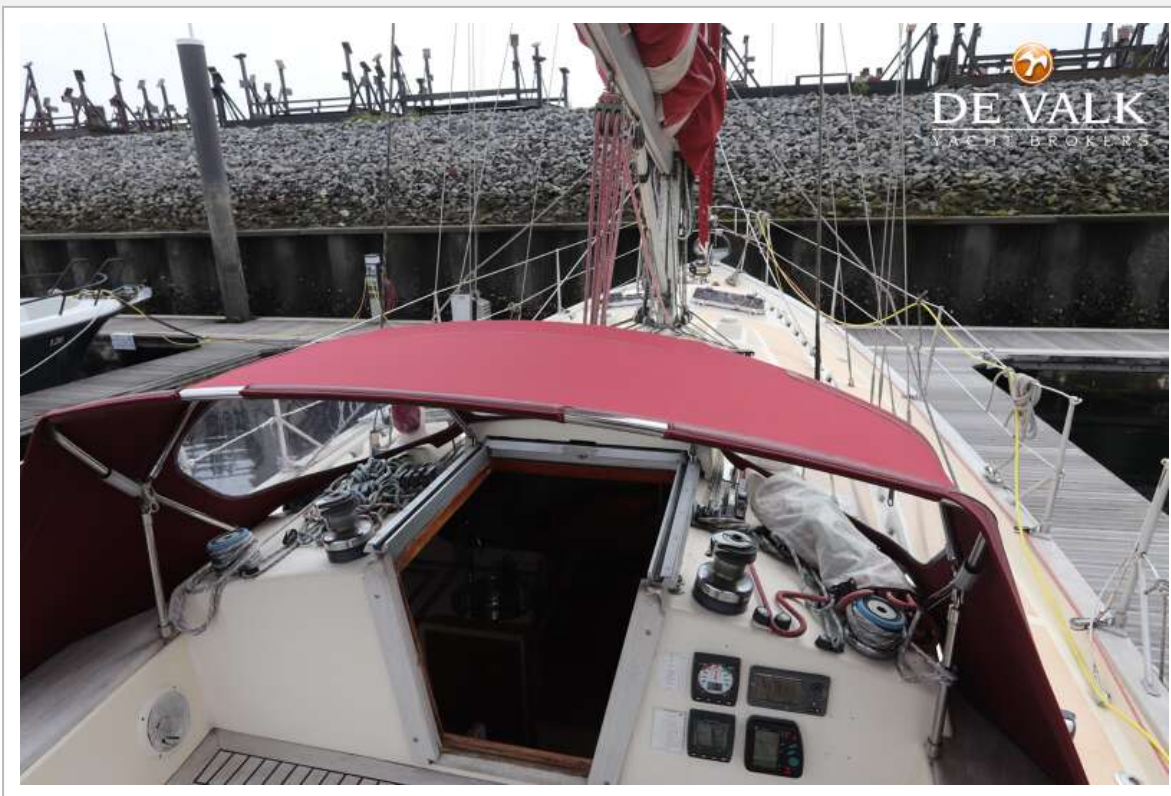
COAST 34 DOUBLE ENDER



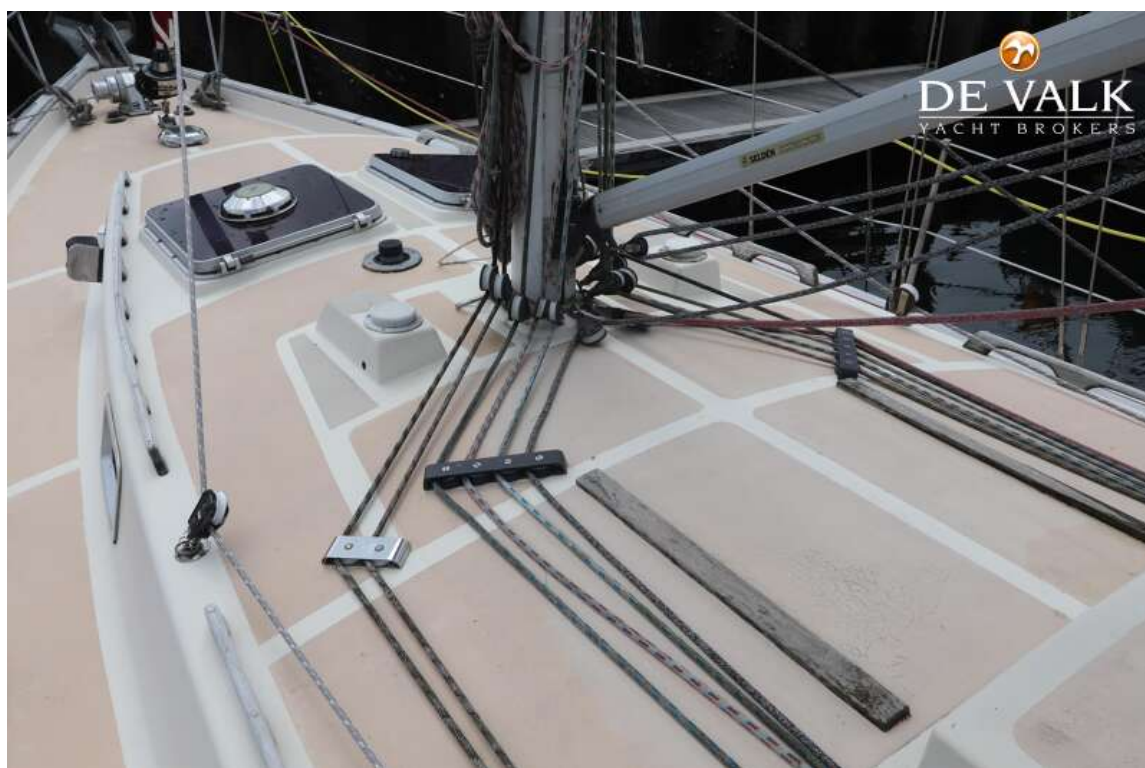
COAST 34 DOUBLE ENDER



COAST 34 DOUBLE ENDER



COAST 34 DOUBLE ENDER



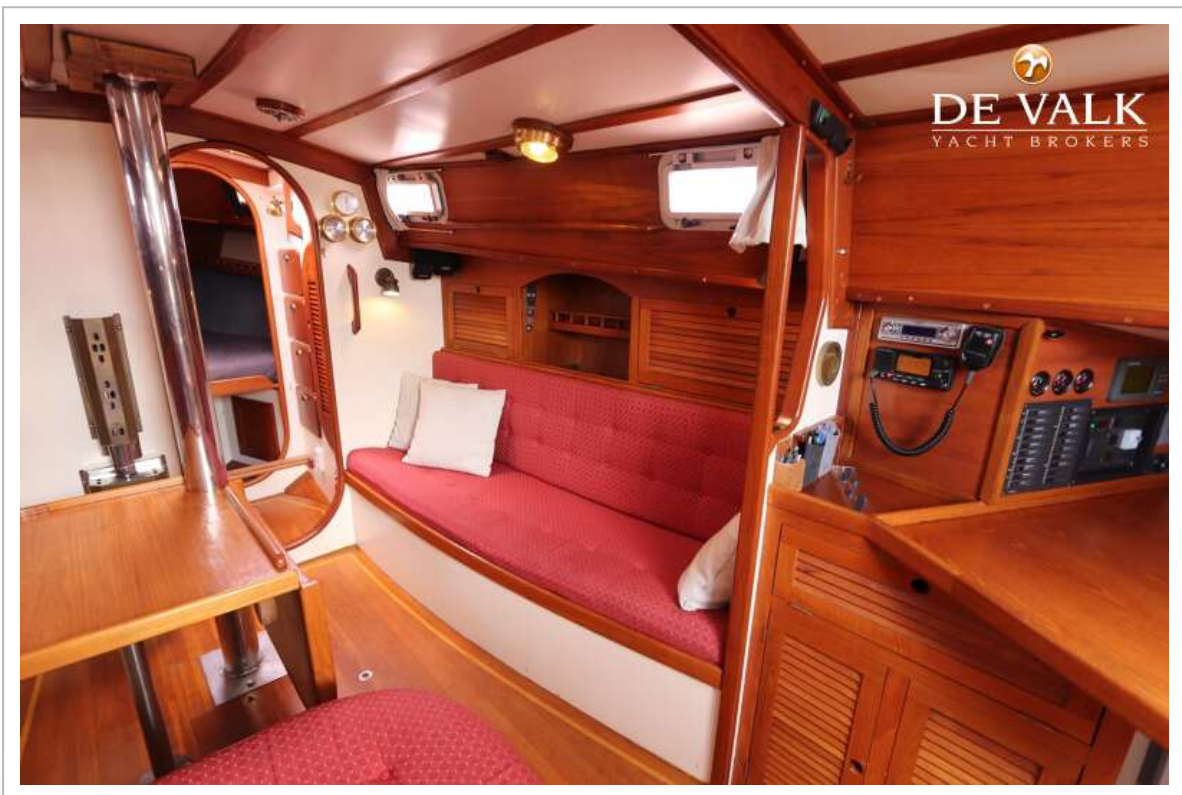
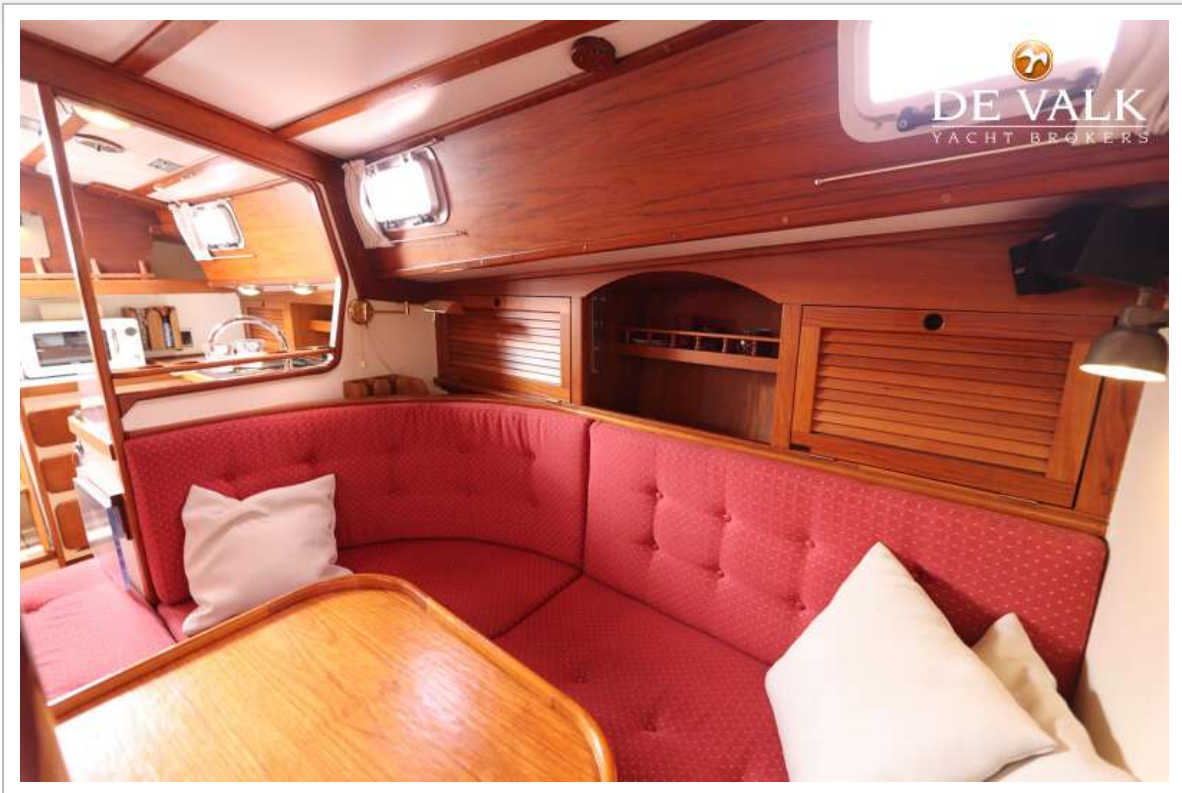
COAST 34 DOUBLE ENDER



COAST 34 DOUBLE ENDER



COAST 34 DOUBLE ENDER



COAST 34 DOUBLE ENDER



COAST 34 DOUBLE ENDER



COAST 34 DOUBLE ENDER



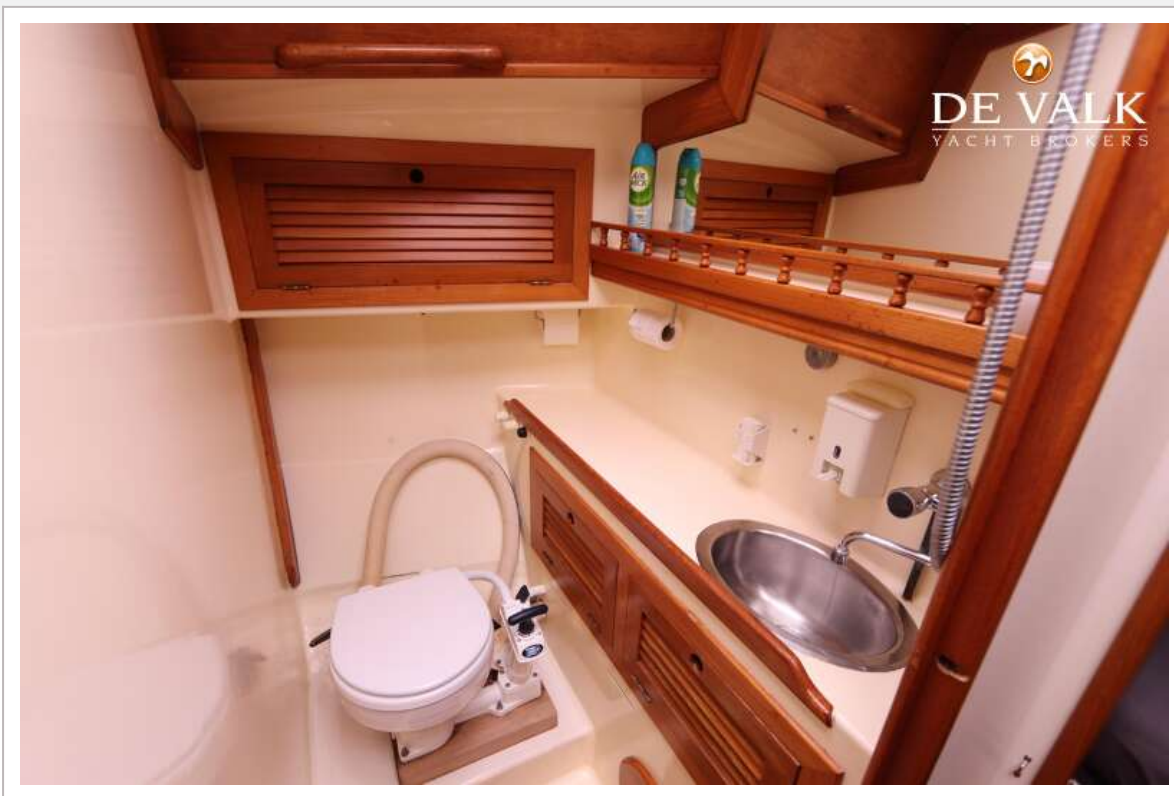
COAST 34 DOUBLE ENDER



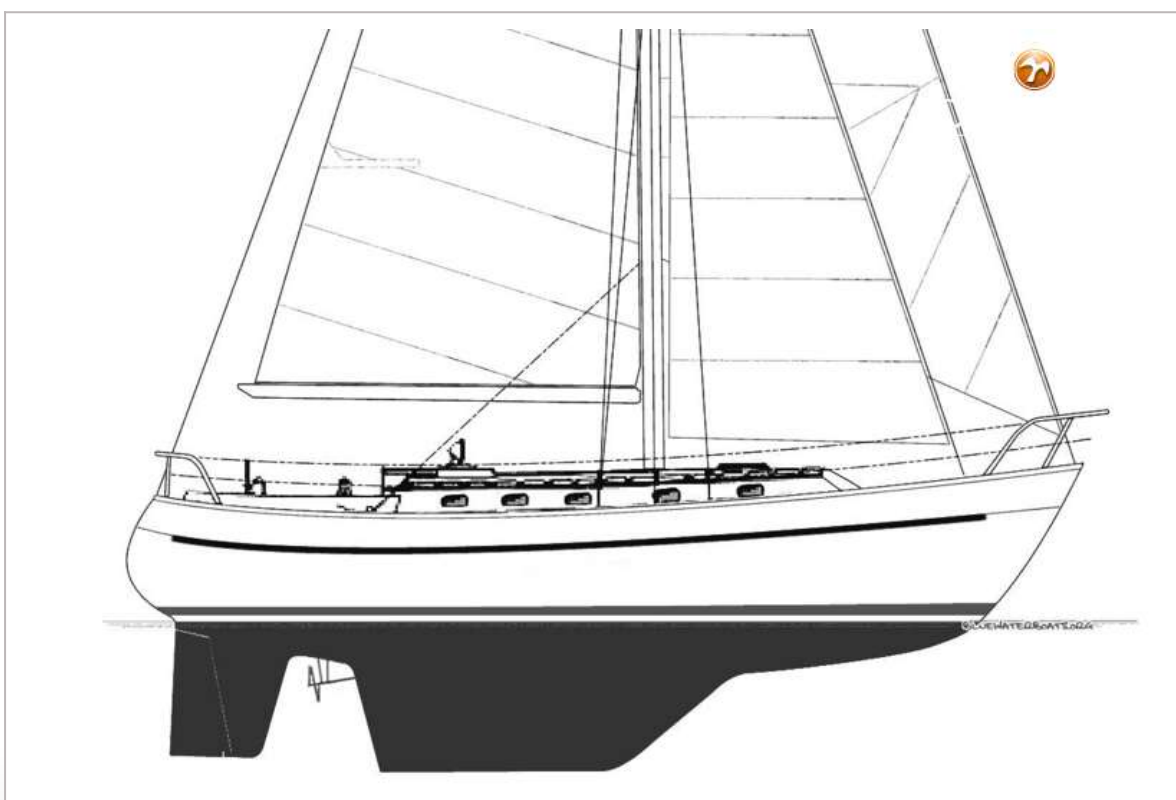
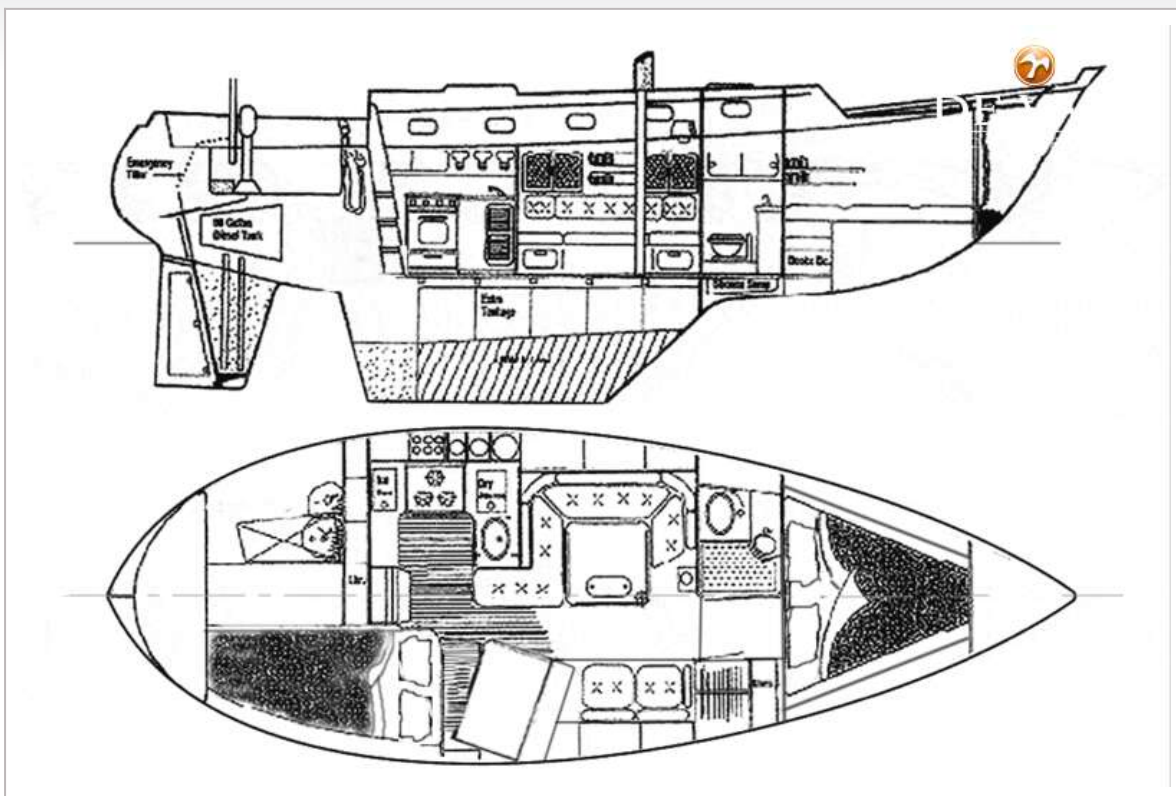
COAST 34 DOUBLE ENDER



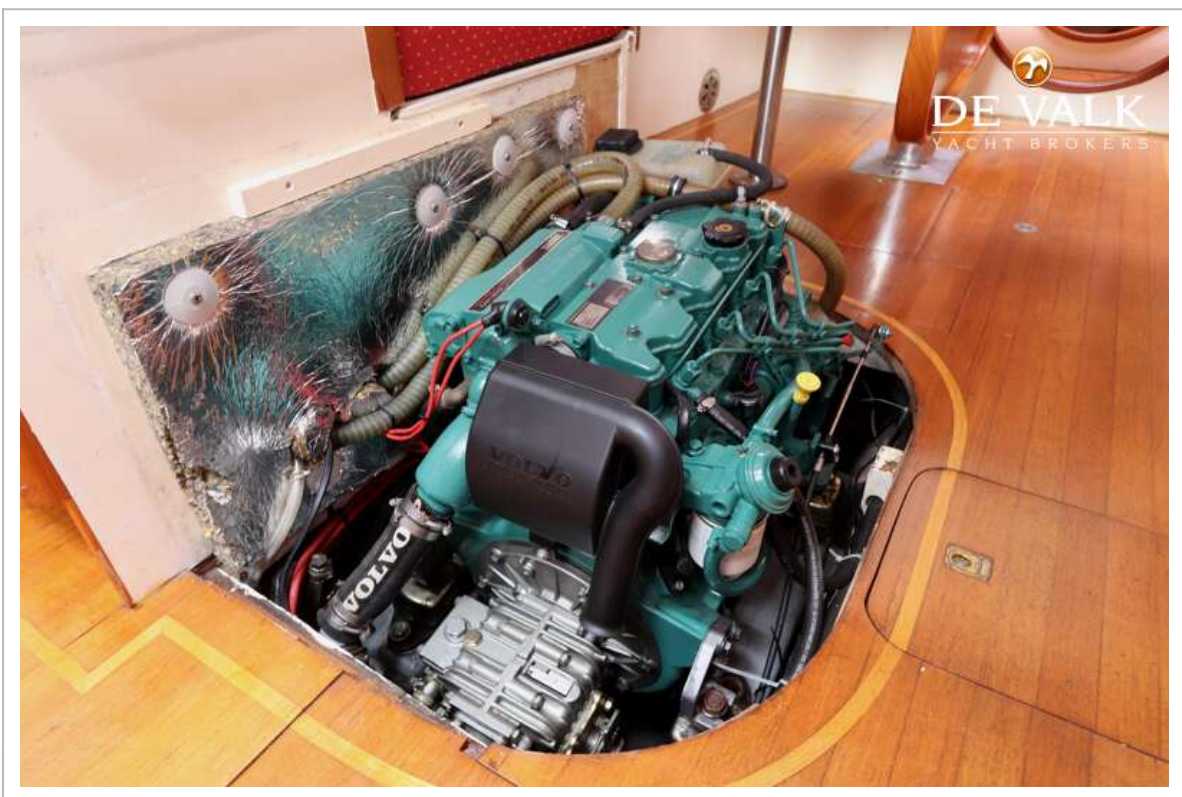
COAST 34 DOUBLE ENDER



COAST 34 DOUBLE ENDER



COAST 34 DOUBLE ENDER



COAST 34 DOUBLE ENDER

