



CONTEST 40S



CONTEST 40S

BROKER'S COMMENTS

This beautiful Contest 40S is designed by Dick Zaal and built by Conyplex werf. With this boat you are guaranteed ideal sailing characteristics, a well thought out and spacious interior and a high build quality. The owners have maintained the Contest perfectly and no cuts have been made. You are welcome in our sales harbour of de Valk Monnickendam to experience yourself why this is called the "Mercedes" among boats.

Harald Padberg

SPECIFICATIONS

Dimensions	12.00 x 3.85 x 1.70 (m)	Builder	Conyplex, Nederland
Built	1994	Cabins	2
Material	GRP	Berths	4
Engine(s)	1 x Volvo Penta MD22A diesel	Hp/Kw	59.00 (hp), 43.37 (kw)
Asking price	sold (VAT)	Lying	at sales office

CONTACT

Sales office	De Valk Monnickendam B.V.	Telephone	+31 (0)299 65 63 50
Address	Hoogedijk 6 1145 PM Katwoude NL	E-mail	monnickendam@devalk.nl

DISCLAIMER

These particulars are given in good faith as supplied but cannot be guaranteed.



GENERAL

Model	CONTEST 40S
Type	sailing yacht
LOA (m)	12,00
LWL (m)	10,00
Beam (m)	3,85
Draft (m)	1,70
Air draft (m)	19,00
Headroom (m)	1,98
Year built	1994
Builder	Conyplex, Nederland
Country	The Netherlands
Designer	Dick Zaal
Displacement (t)	11
Ballast (tonnes)	4,8
CE norm	NA
Hull material	GRP
Hull colour	off-white
Hull shape	round-bilged
Keel type	wing keel
Superstructure material	GRP
Rubbing strake	wood
Deck material	GRP
Deck finish	teak
Superstructure deck finish	teak
Cockpit deck finish	teak
Antifouling (year)	2021
Window frame	Gebo
Window material	perspex
Deckhatch	3 x Gebo
Portholes	12 x Gebo



Fuel tank (litre)	stainless steel 250
Level indicator (fuel tank)	yes
Freshwater tank (litre)	stainless steel 500
Level indicator (freshwater)	yes
Blackwater tank (litre)	polyethylene 55
Blackwater tank extraction	deck extraction + uw line
Wheel steering	rack & pinion Whitlock
Emergency tiller	yes

ACCOMMODATION

Cabins	2
Berths	4
Interior	teak
Floor	teak and holly
Open cockpit	yes
Aft deck	yes
Saloon	yes
Headroom saloon (m)	1,98
Heating	central hot water Webasto
Navigation center	yes
Chart table	yes
Aft Cabin	yes
Sliding door to cockpit	sliding hatch
Galley	ca 1,96 m headroom
Countertop	plastic
Sink	stainless steel 2 x
Cooker	calor gas
Oven	yes
Fridge	Frigomatic 12v
Freezer	in Fridge
Hot water system	220V Webasto



Water pressure system	electrical
Owners cabin	double bed
Bed length (m)	mattresses 2021 1,97 x 1,35
Wardrobe	drawers and shelves
Bathroom	separate
Toilet	en suite (2021)
Toilet system	manual Jabsco Regular
Wash basin	in the bathroom
Shower	en suite
Guest cabin 1	v-bed
Bed length (m)	2,00 x 0,70
Wardrobe	drawers and shelves
Bathroom	separate
Toilet	en suite (2021)
Toilet system	manual Jabsco Regular
Wash basin	in the bathroom
Shower	en suite

MACHINERY

No of engines	1
Make	Volvo Penta
Type	MD22A
HP	59
kW	43,37
Fuel	diesel
Year installed	1994
Maximum speed (kn)	8
Cruising speed (kn)	7
Consumption (l/hr)	3,5
Engine hours	6350
Engine cooling system	freshwater heat exchanger



Drive	shaft
Shaft seal	yes
Gearbox	mechanical Volvo Penta MS2AE (06-2021)
Engine controls	bowden cable
Bowthruster	electric Sitepower 6 HP (2010) Sleipner SE80/185T
Exhaust	watercooled
Propeller type	fixed
Propeller blades	3
Propeller shaft material	stainless steel
Shaft lubrication	water
Manual bilge pump	yes
Electric bilge pump	yes
Electrical installation	12V / 230V
Batteries	4 x 105 Ah
Bowthruster battery	yes
Battery monitor	Mobitronic
Battery charger	Victron 12V-50A
Shorepower	with cable
Extra info	Engine timing belt renewed (07-2019)

NAVIGATION

Compass	Whitlock Polaris
Electric compass	Raymarine via autopilot
Depth sounder	Raymarine I70 (2019)
Depth sounder/log	yes
Log	Raymarine I70 (2019)
Windset	Raymarine I60+ I70 (2019)
VHF	Navman VHF 7110
Autopilot	Raymarine P70S (2019)
Radar	needs service Raytheon
Plotter	Via Laptop & GPS



Navtex	Via Laptop Wibe
Personal computer	yes
PC connection	yes
AIS transponder	Watcheye + Splitter (05-2018)
Personal MOB transmitter	on GPS Furino
Navigation lights	yes

EQUIPMENT

Fixed windscreen	yes
Sprayhood	yes
Cockpit cushions	yes
Cockpit table	yes
Boarding ladder	stainless steel
Anchor	RVS 27 KG
Anchor chain	50 m.
Anchor 2	
Windlass	electrical
Deck wash	yes
Dinghy	inflatable YAM230T
Outboard	4 HP Evinrude
Sea railing	
Grab rail (superstructure)	teak
Railing side opening gates	yes
Pushpit	yes
Pulpit	yes
Life raft	
Life raft (pers)	6
Last life raft survey	05-2017
Radar reflector	Blipper Firdell 210-7
Fenders	yes
Mooring lines	yes



Fire extinguisher

2x

Extra info

Detachable parts at hood + cockpit cove

RIGGING

Rigging

sloop

Standing rigging

wire (2019)

Brand mast

Seldén

Material mast

aluminium

Spreaders

2 x 2

Mainsail

De vries UK, Dracon 32m2 (2018)

Stoway mast

yes

Genoa

De vries UK, dracon 58,8 m2 (ca 2012)

Booster

130 m2 (2006)

Reefing System

main in-mast furling

Backstay adjuster

mechanical

Boomvang

tackle

Genoa sheetwinches

2 x lewmar 54ST

Halyard winches

2 x Lewmar 44ST

Multifunctional winches

1 x Lewmar electric

Extra info

1x electrial hand winches with handle



CONTEST 40S



CONTEST 40S



CONTEST 40S



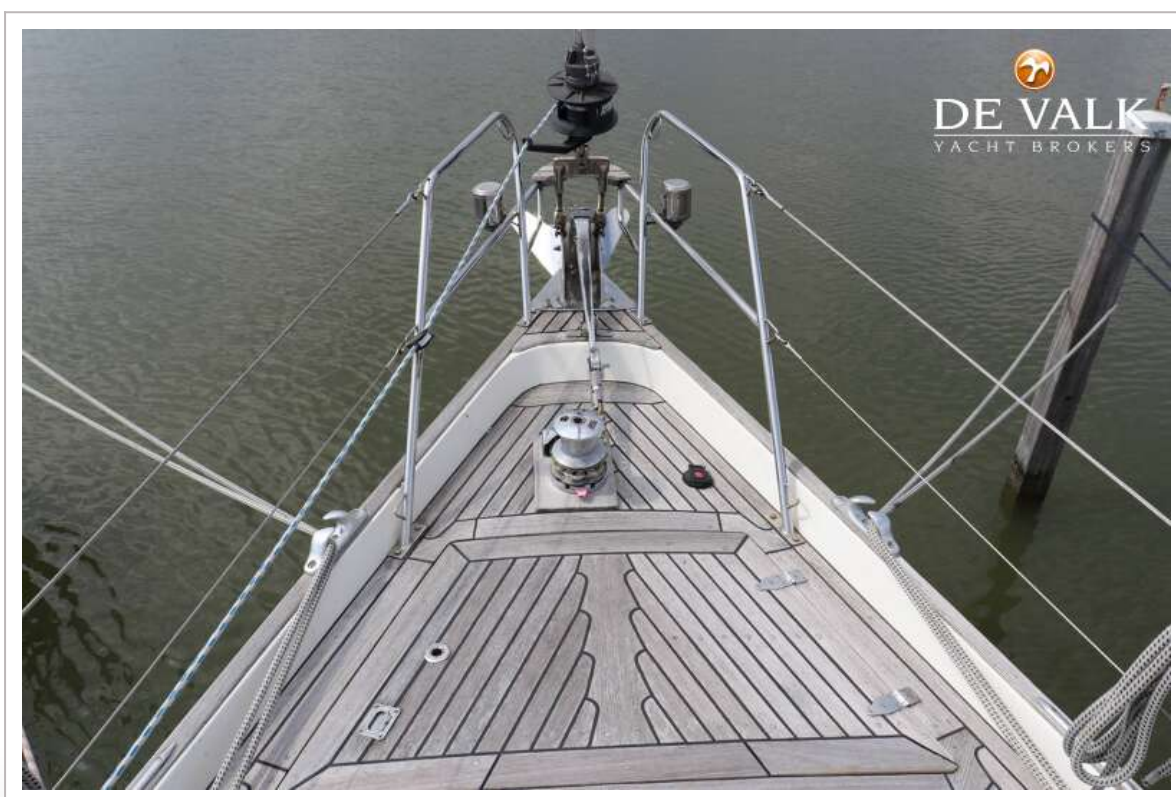
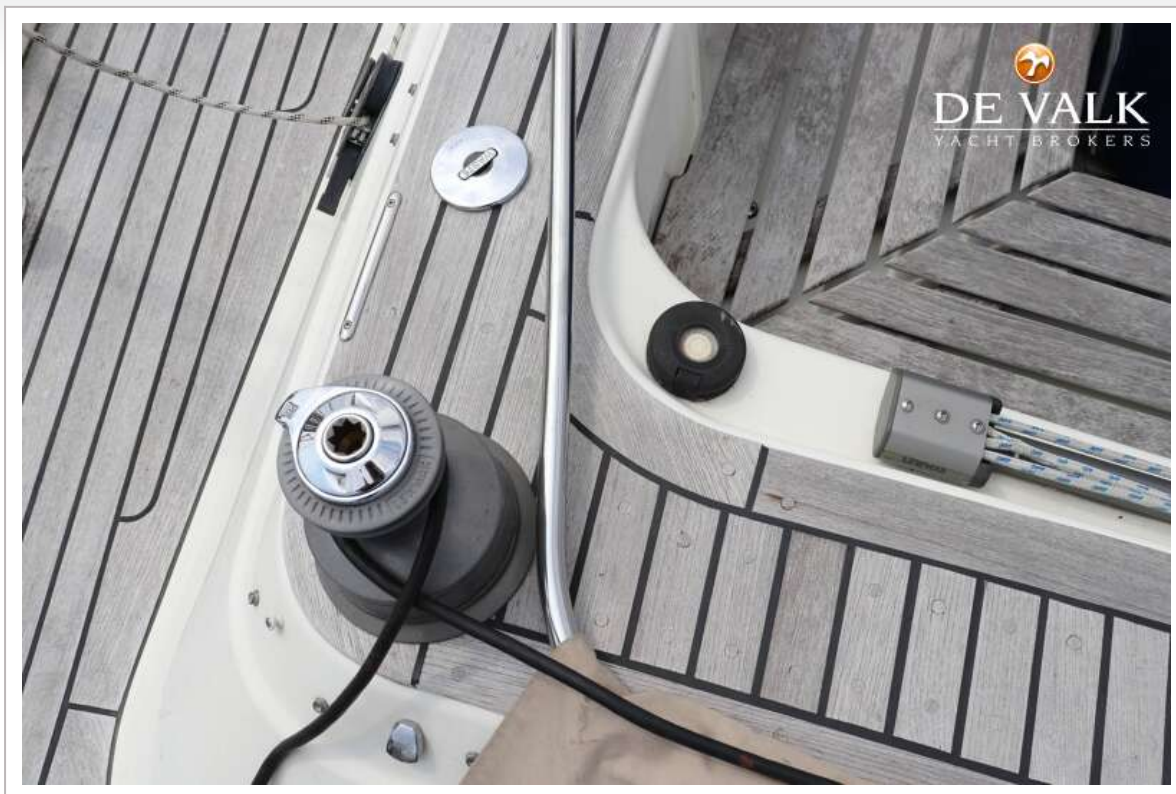
CONTEST 40S



CONTEST 40S

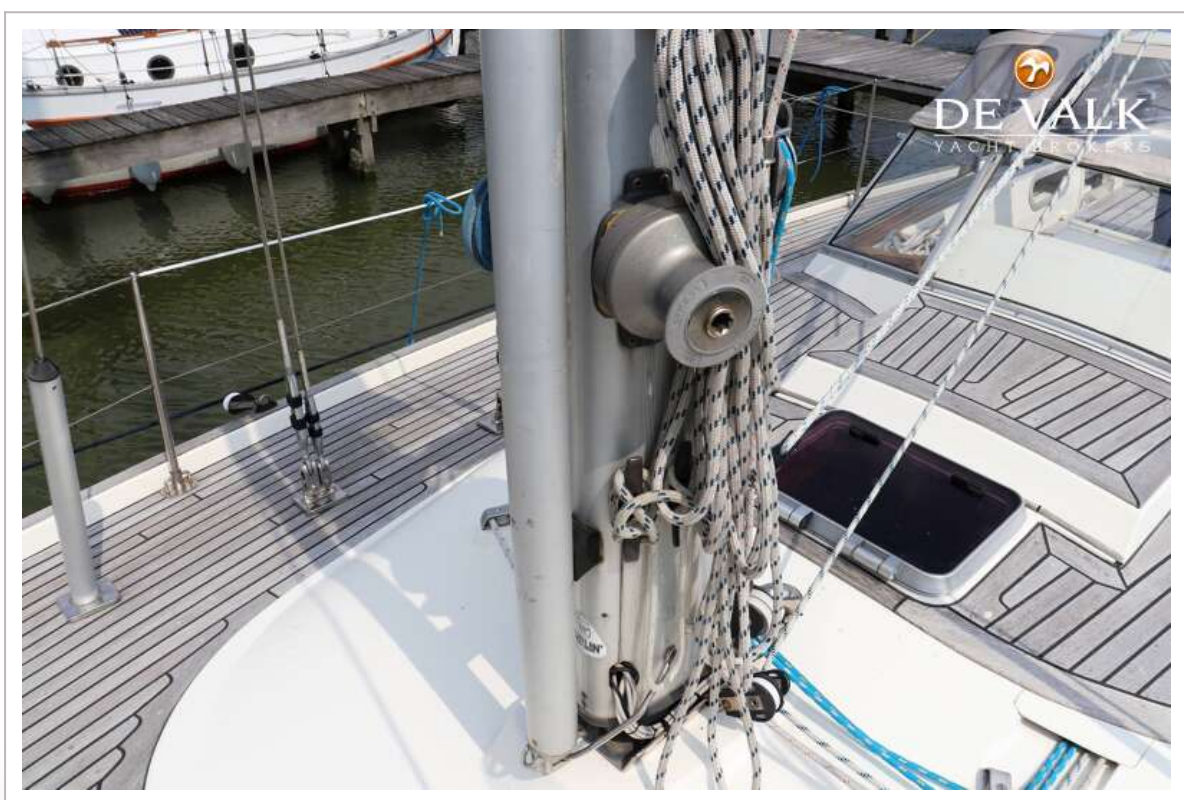


CONTEST 40S





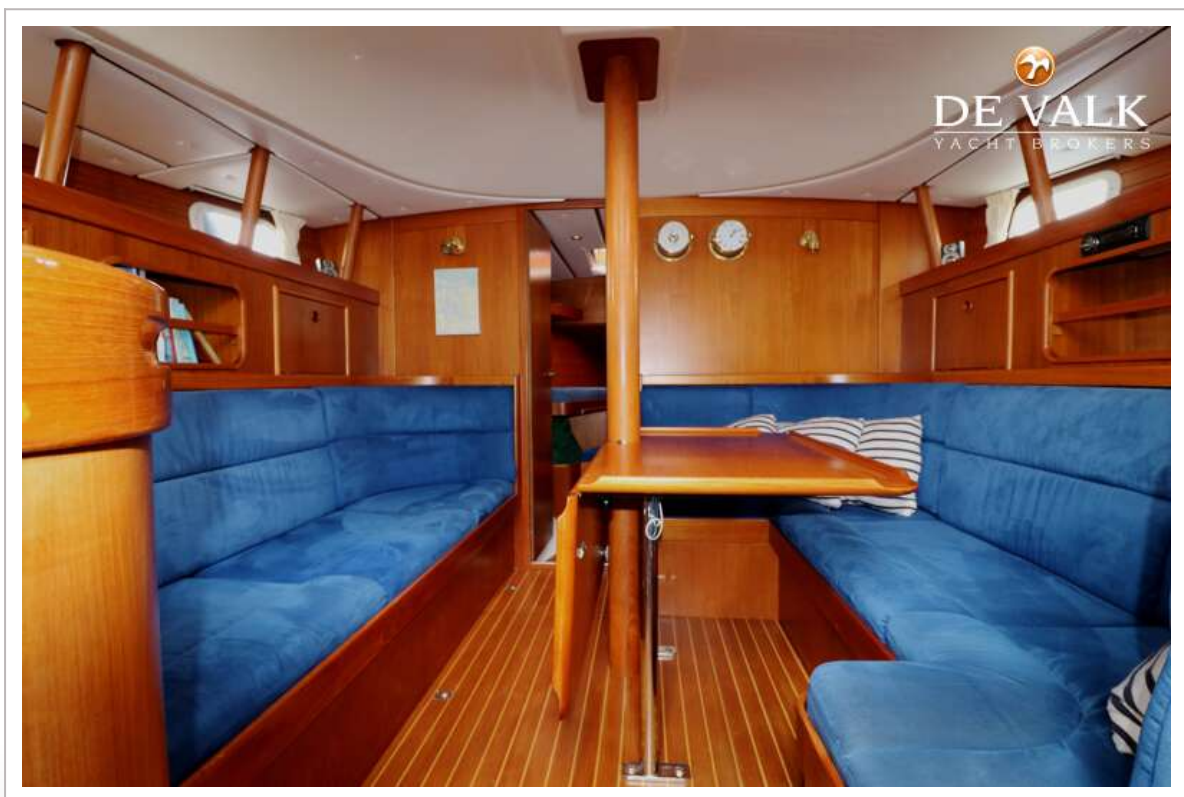
CONTEST 40S



CONTEST 40S



CONTEST 40S



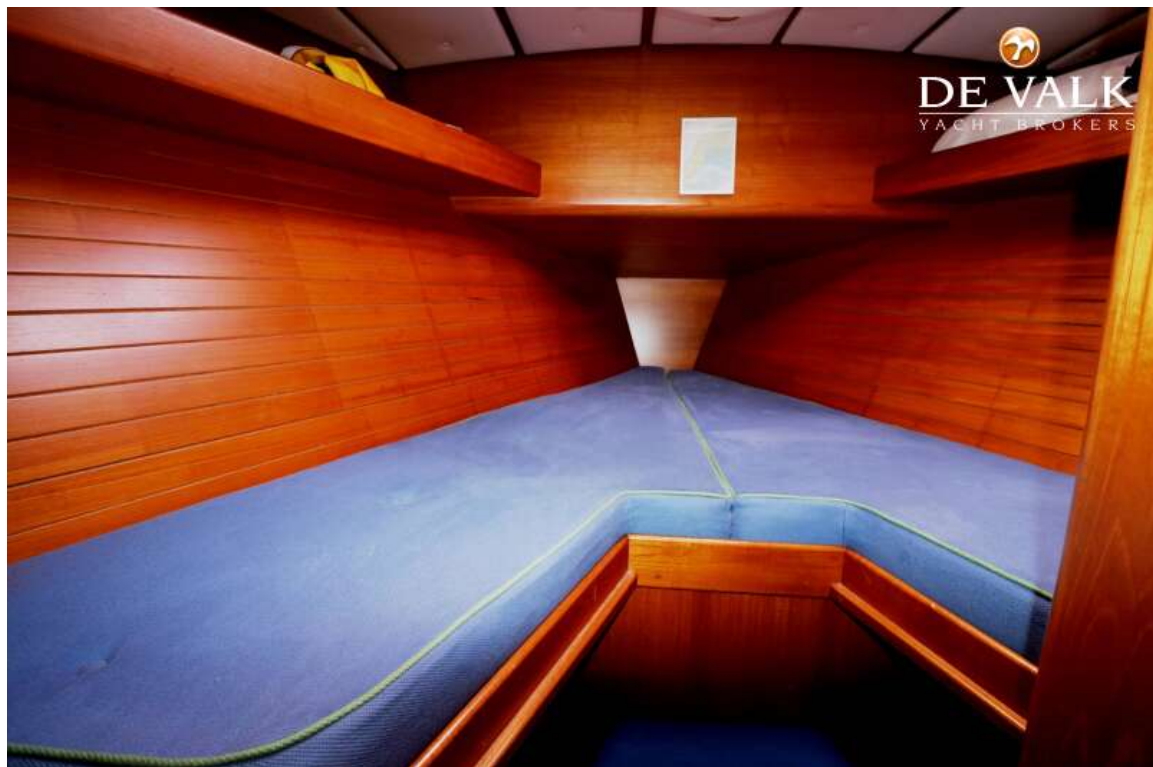
CONTEST 40S



CONTEST 40S



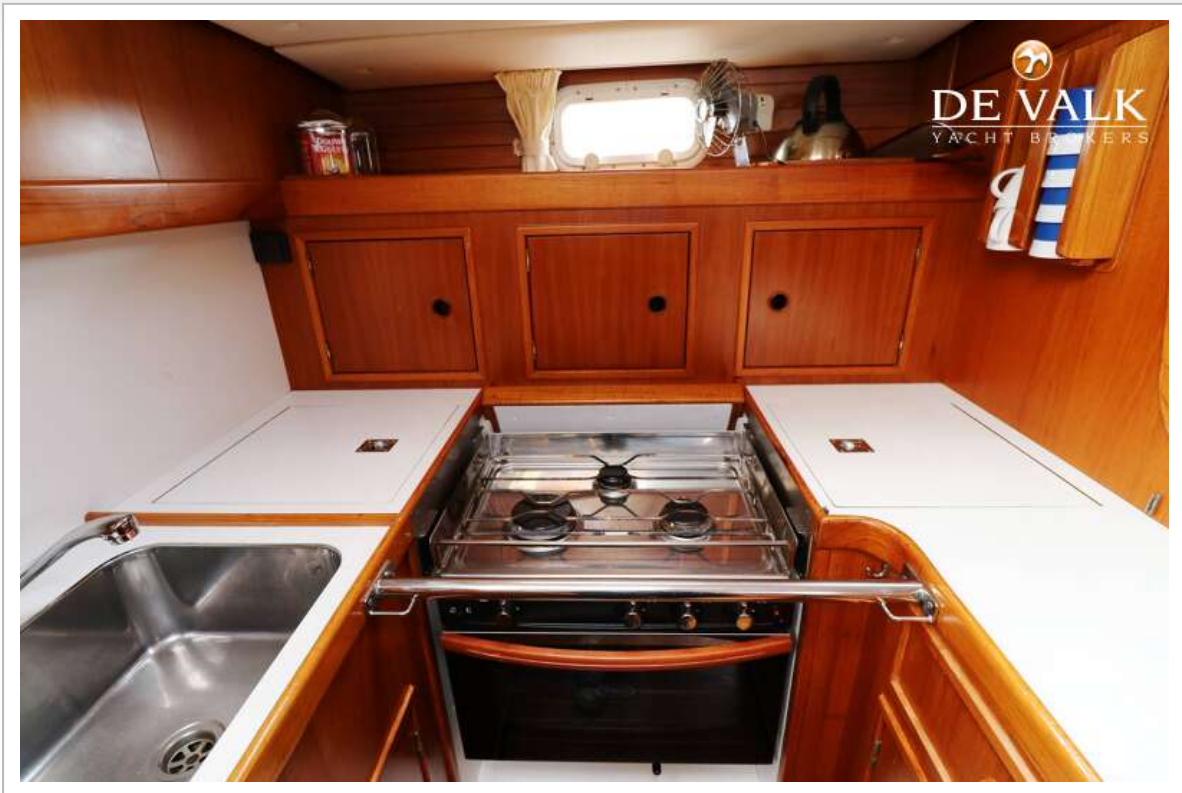
CONTEST 40S



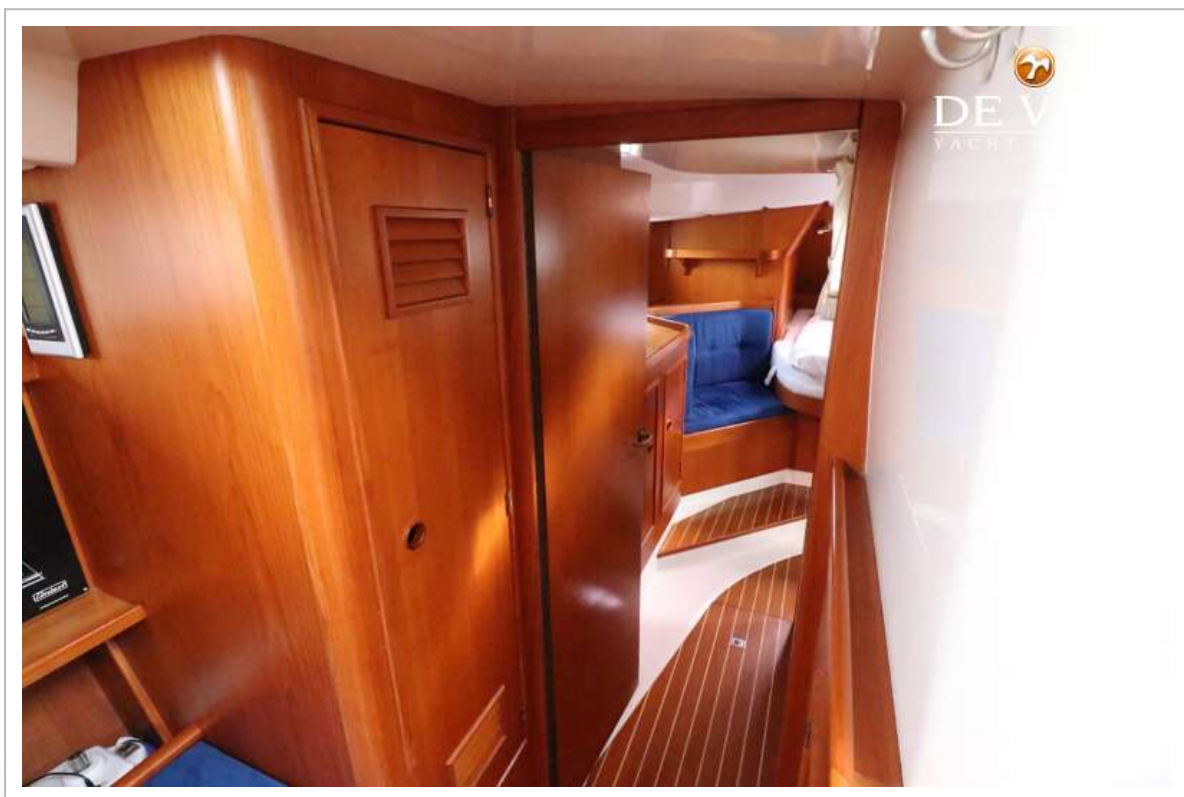
CONTEST 40S



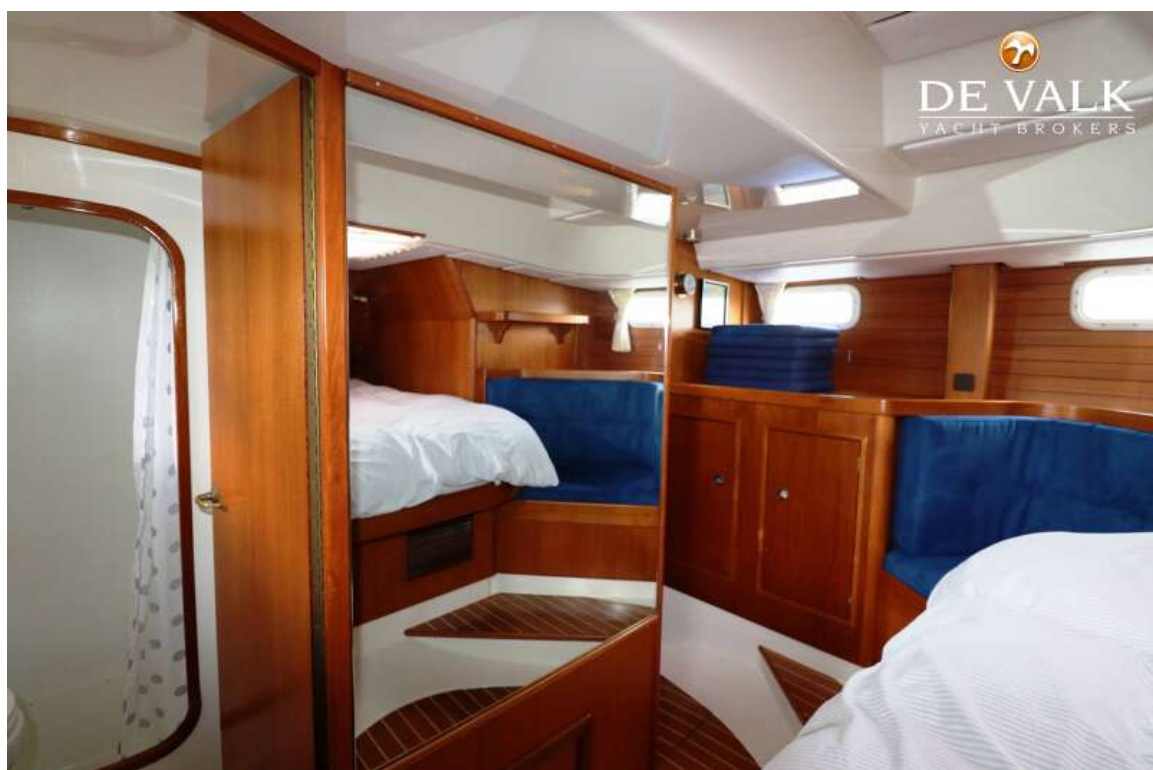
CONTEST 40S



CONTEST 40S



CONTEST 40S



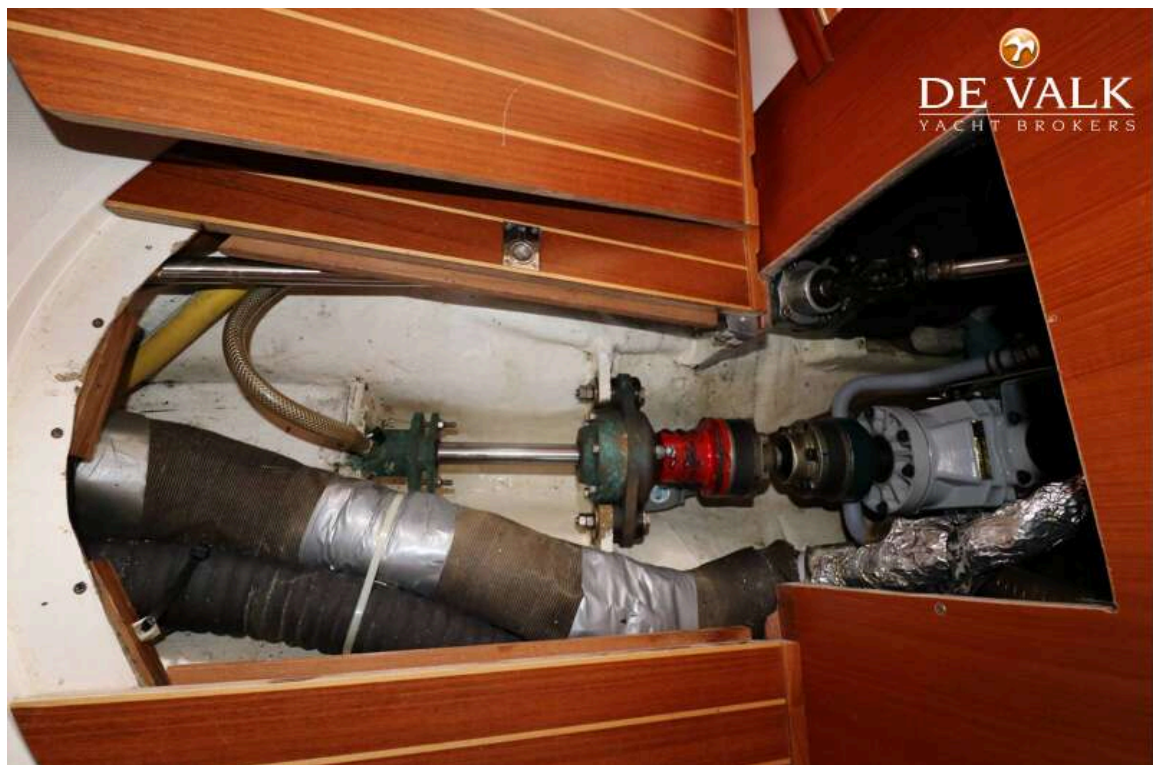
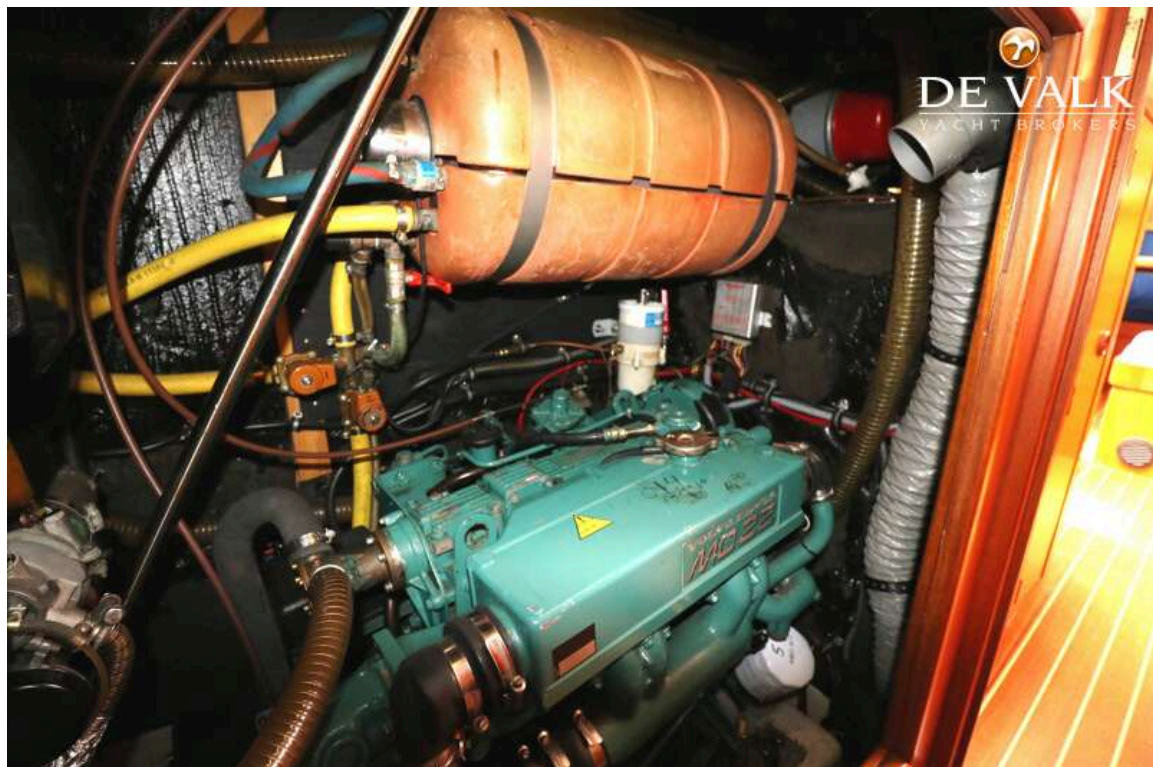
CONTEST 40S



CONTEST 40S



CONTEST 40S



CONTEST 40S

